

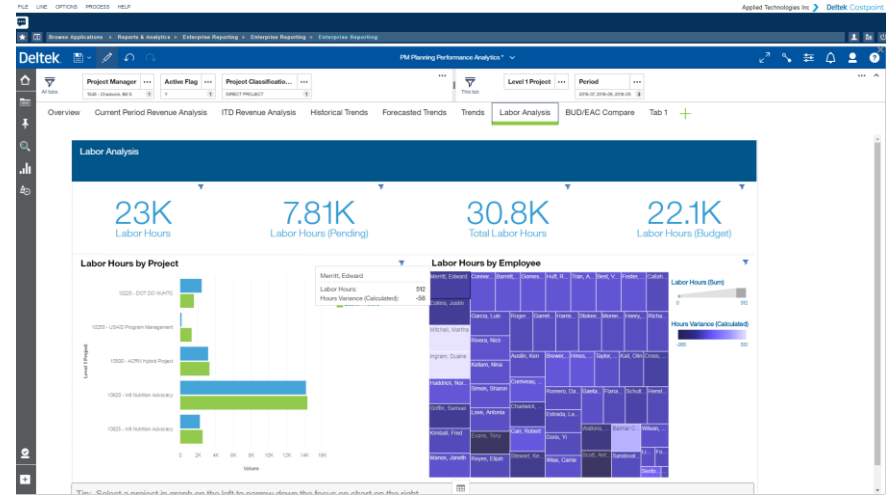


What to Know about Upgrading to Costpoint Enterprise Reporting 7.2.1

Cloud Customer Information
February 2019

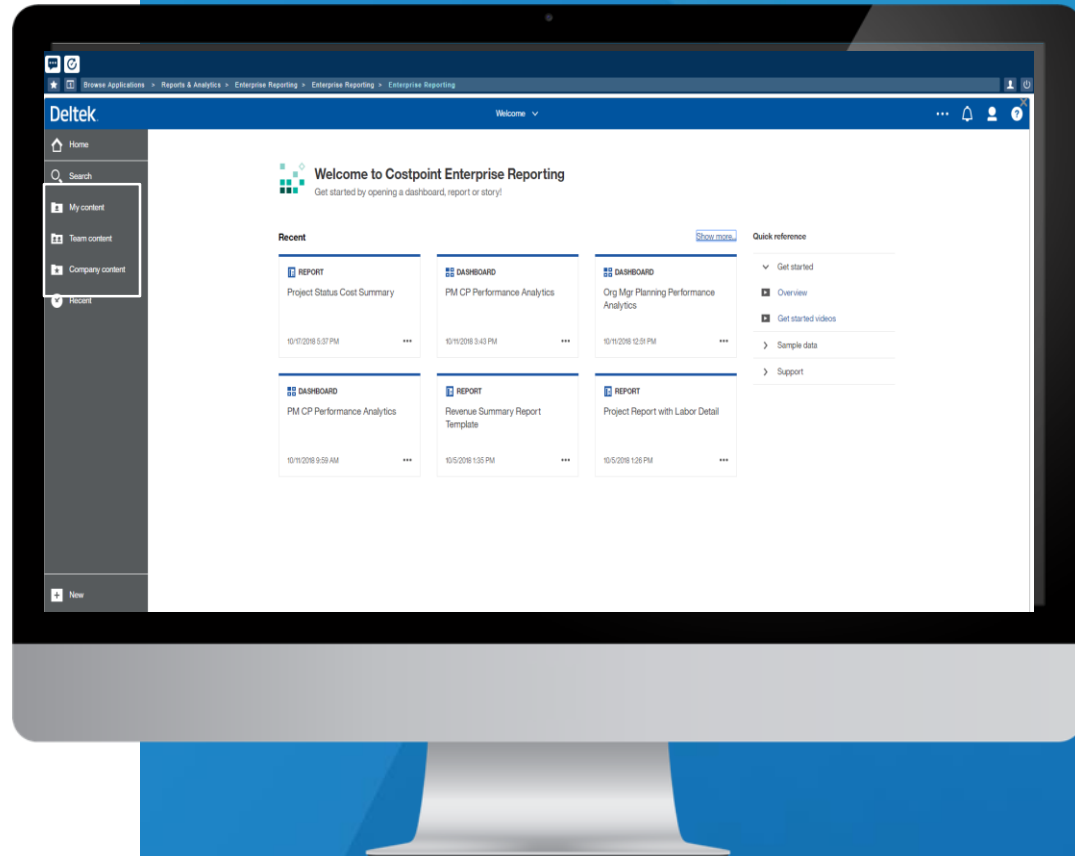


- » Self-Service BI for Everyone!
- » New, Intuitive User Interface
 - » Easy to access content
 - » One authoring environment
- » Dashboard Analytics
- » New BI Content and Models
- » Data Module
- » Integrated Security Model



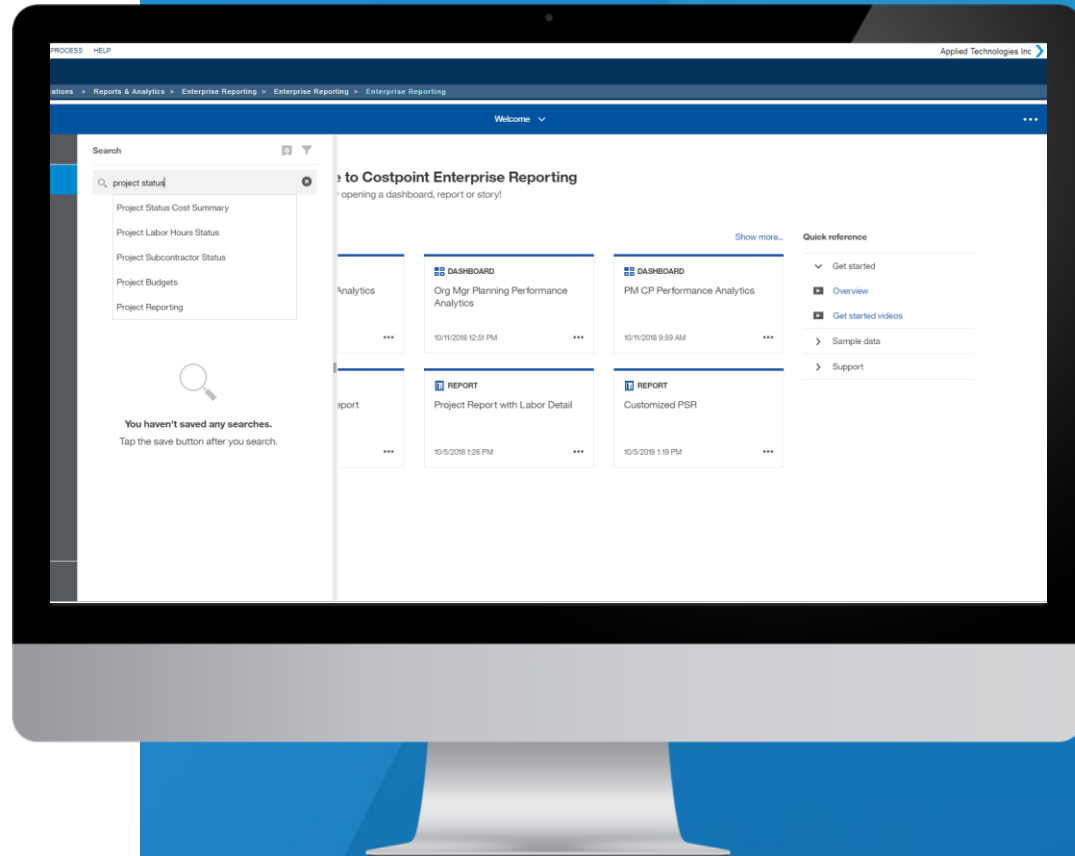
New User Interface

- » My Content-Personal Saved Content
- » Team Content-Deltek Provided Content-Access Determined with Security
- » Company Content-Create your own folder structure giving access to only the content you want others to see



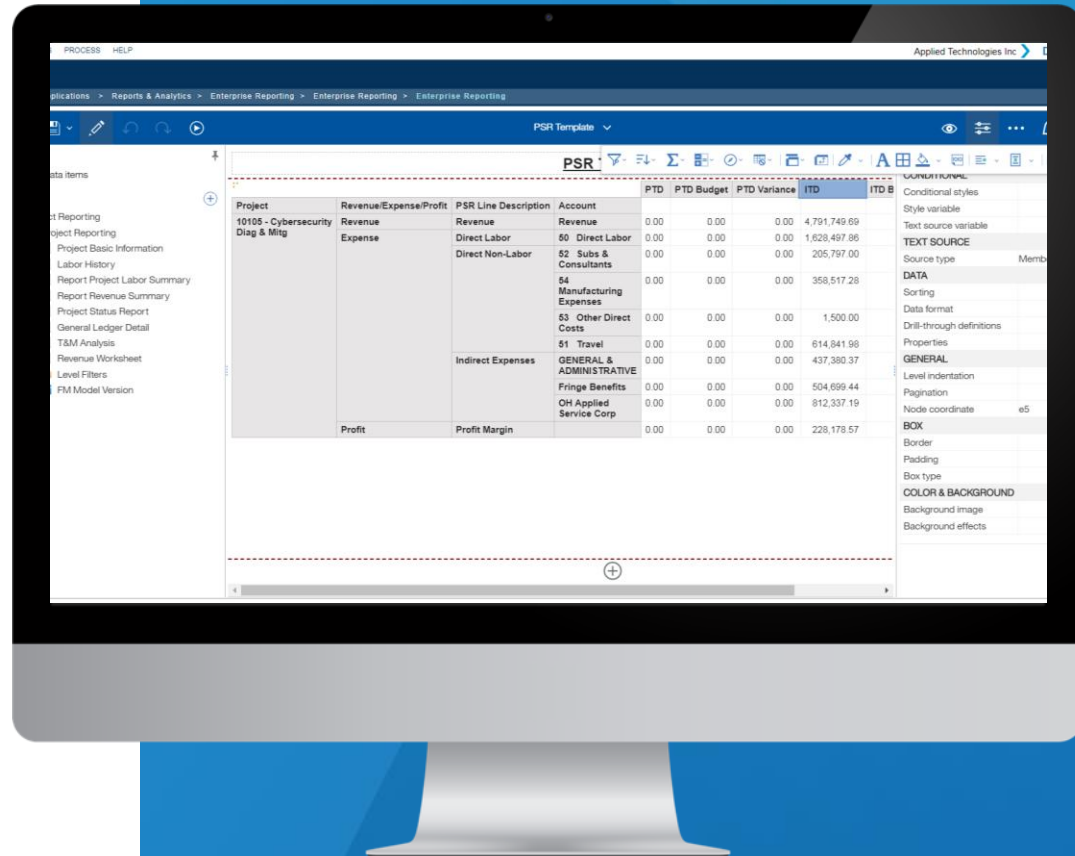
Navigating Content

- » Search across all the content, filtering only what you want to find
- » Toggle between open reports



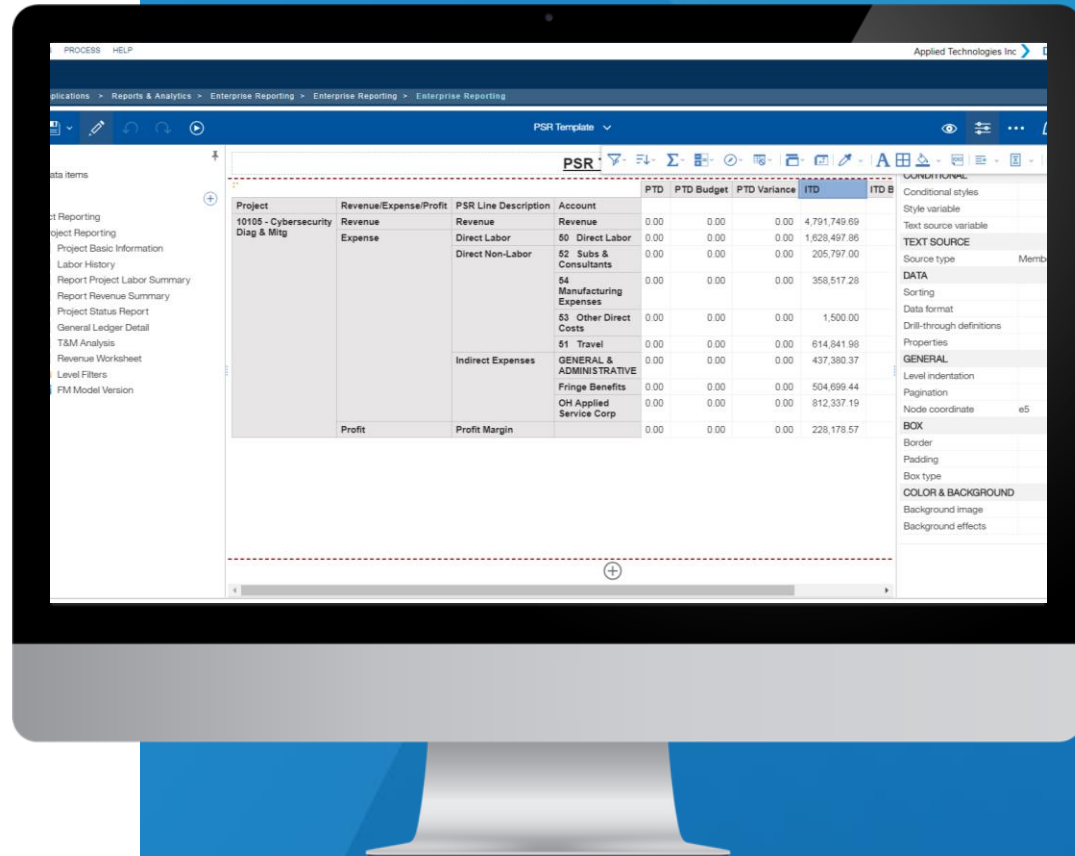
Single Authoring Environment

- » Combines functionality of Report Studio, Workspace Advanced and Query Studio into a single environment



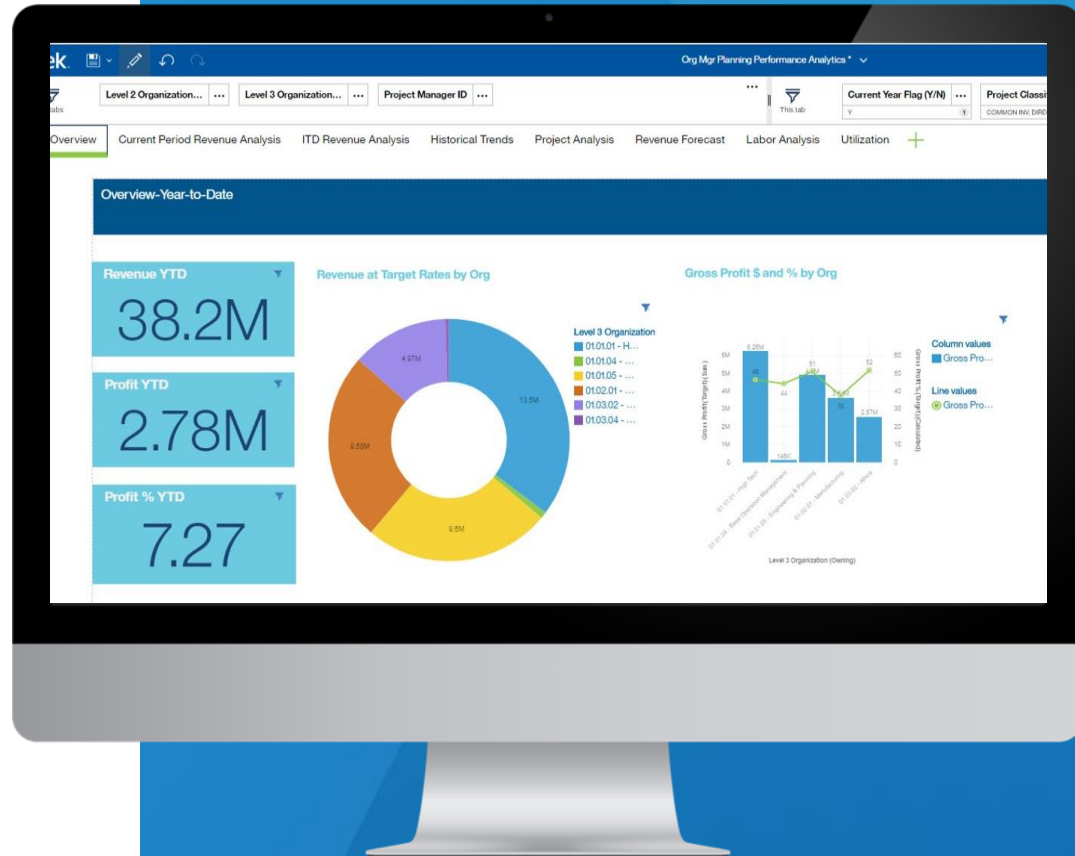
Single Authoring Environment

- » Preview reports as you are authoring them



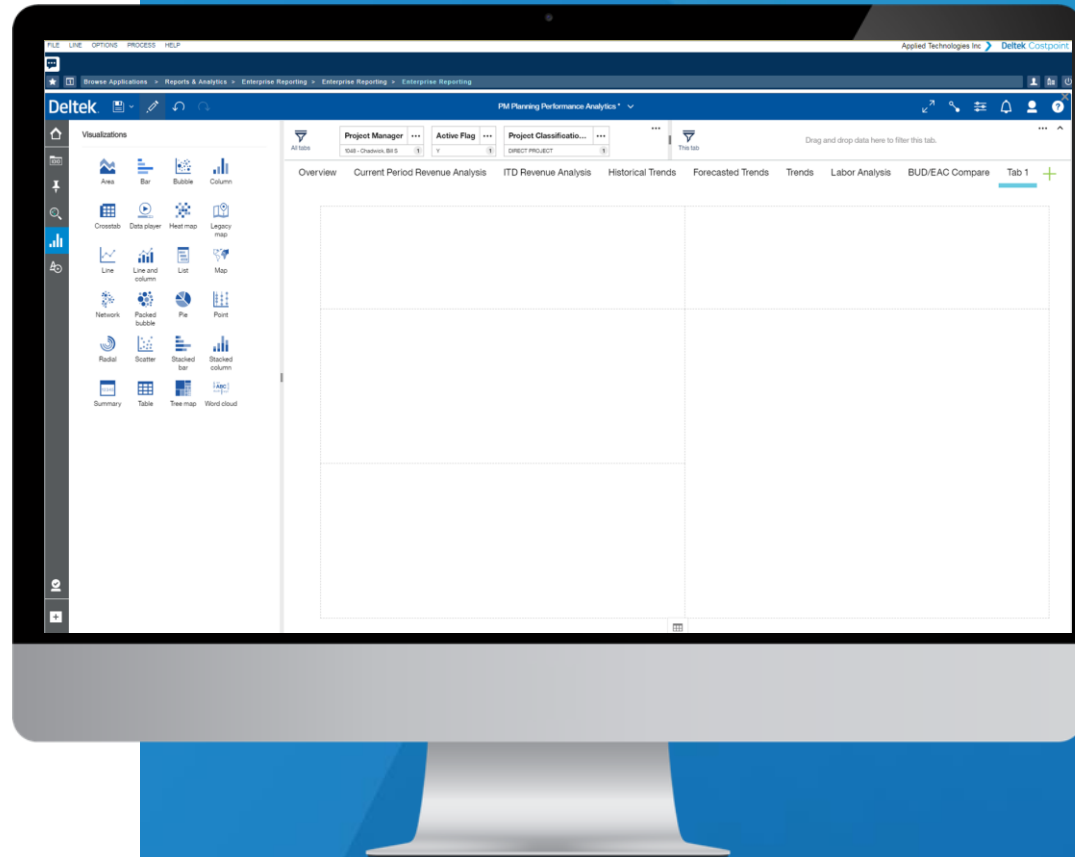
Dashboards

- » Pre-built Interactive Dashboards are provided
- » Easy to create your own Dashboards



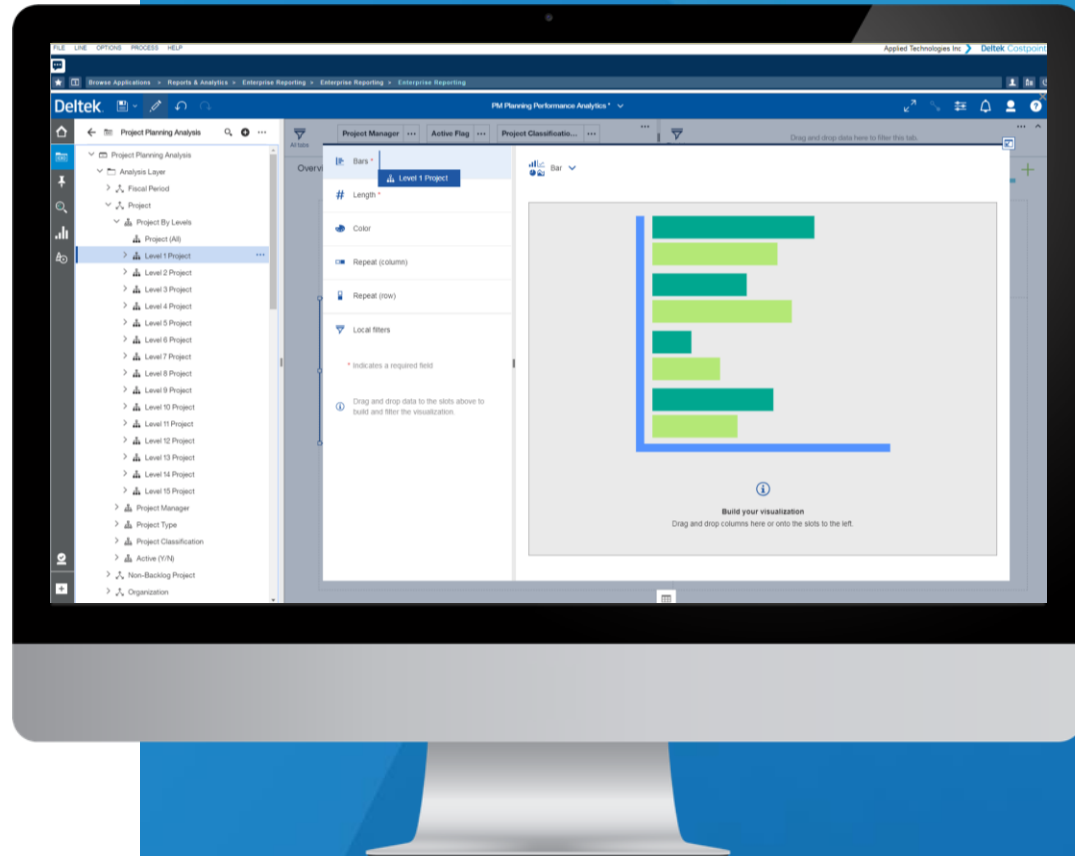
Dashboard Authoring

- » Will suggest visualizations to use for specific data or you can select from the list of visualizations



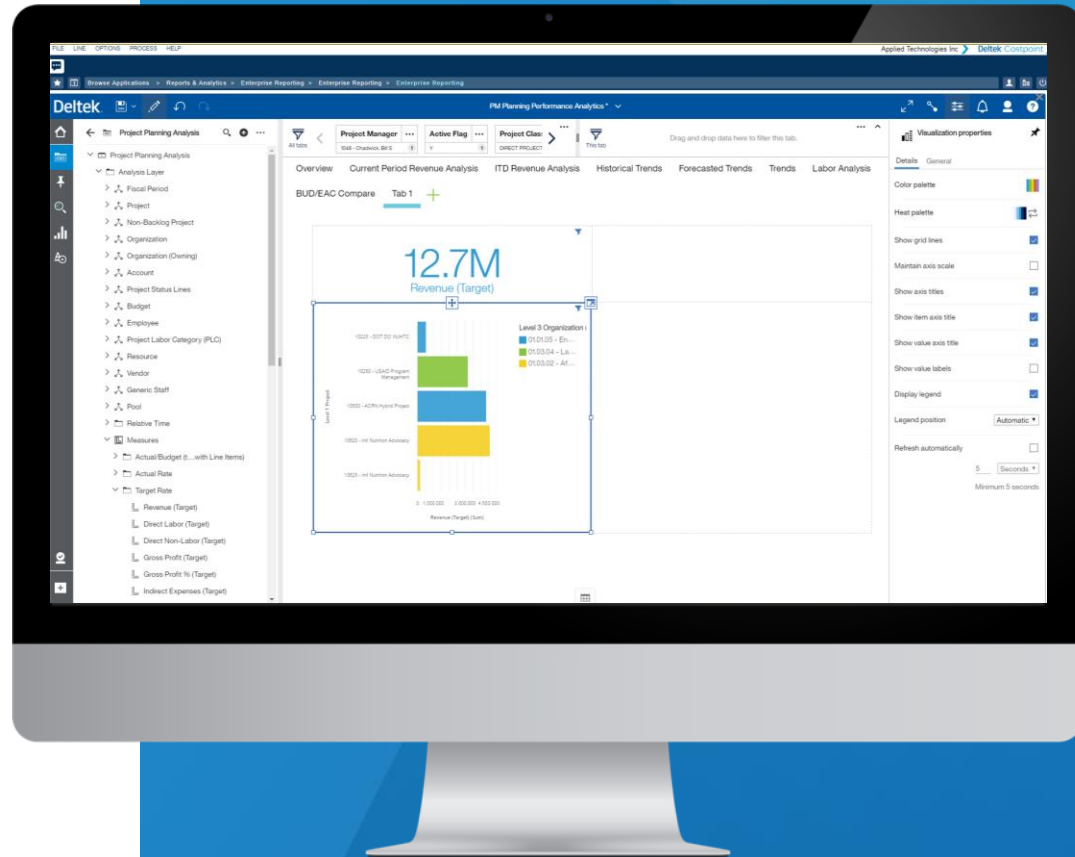
Dashboard Authoring

- » Drag and drop data fields into the visualization



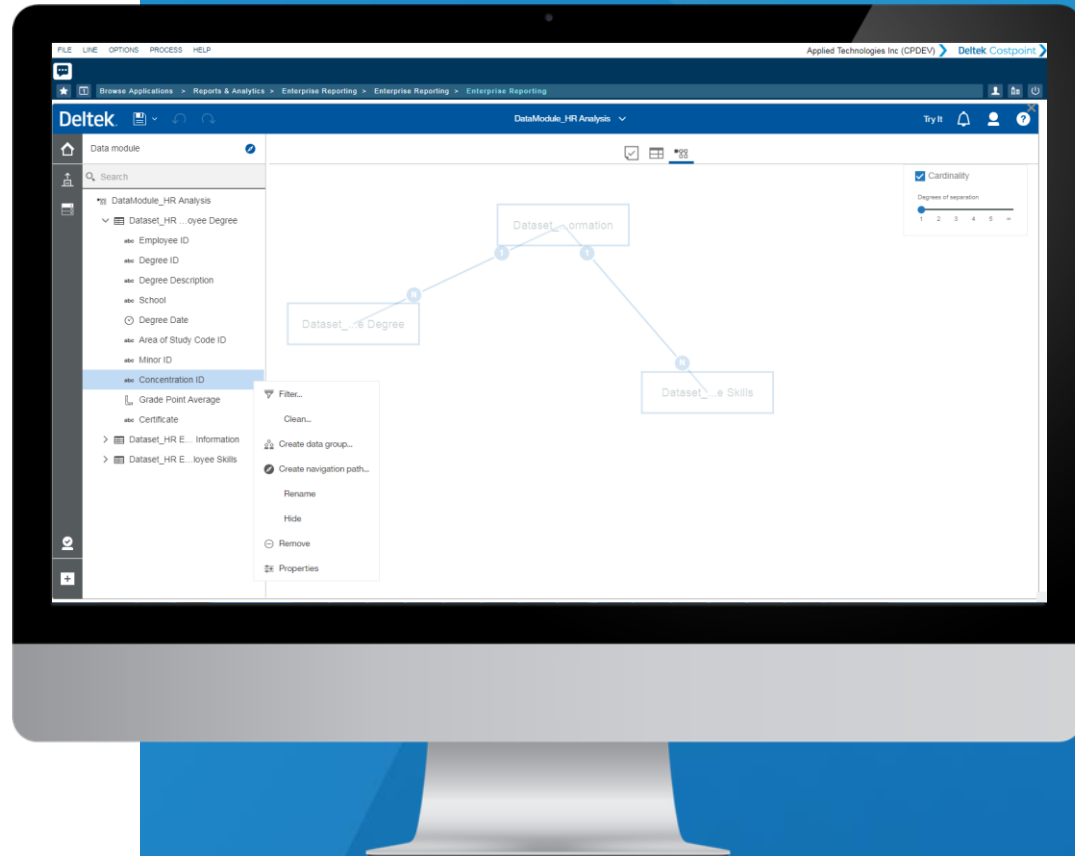
Report Authoring

- » On screen rendering of dashboards as you create them



Data Module

- » Browser based data design tool
- » Great for creating quick model to use with dashboards



CER Security Groups

- » Costpoint now includes standard user groups that are utilized to secure CER capabilities, objects and data.

★ 1 Browse Applications > Admin > Security > System Security > Manage User Groups			
User Groups			
<input checked="" type="checkbox"/>	User Group ID *	Name *	
	CER__ACCTG	CER Accounting	
	CER__ADMIN	CER Cloud Administrator	
	CER__ADV	CER Advanced User	
	CER__CONSUMER	CER Consumer	
	CER__CP_ADMIN	CER CP Administrator	
	CER__DEV	CER Developer	

Types of Security

- » **Object Security:** Determines who can access the what Deltek content (folders, packages, reports, and dashboards). Applies to all content.
- » **Product Capabilities Security:** Determines who can access which features or capabilities of the Cognos product based on our licensing structure. Applies to all.
- » **Data Security:** Security derived from Costpoint, includes Organization, Labor Suppression and Project Manager

Note: Steps are outlined in the “CER Cloud Set-up Guide”

Easier to Manage User Licenses!

- » CER groups are used to manage software **capabilities** based on the types of software licenses purchased.

Component	Consumer*	CER User**	Advanced CER User	CER Developer	Web Admin	CER/BI Admin
Interactive Viewer	X	X	X	X		X
Dashboards (View and Author)		X	X	X		X
Interactive Report Authoring			X	X		X
Data Module			X	X		X
Framework Manager				X		X
Administration Console					X	X

* Consumers are a type of CER user that you can assign with limited capabilities to only run reports

Overview of Cloud Setup

CER Configuration

- Enable/Disable Data Level Security
- Set Current Period

User Setup

- Capabilities
- Object
- Data Level (Org, Project, Labor Suppression)

Company Content Folder

- Organize your own content, control access to report consumers, add custom reports