

Deltek Budgeting and Planning[®]

Technical Overview and System Requirements

March 2010



13880 Dulles Corner Lane
Herndon VA 20171
TEL: 703.734.8606
FAX: 703.734.1146

While Deltek has attempted to verify that the information in this document is accurate and complete, some typographical or technical errors may exist. The recipient of this document is solely responsible for all decisions relating to or use of the information provided herein.

The information contained in this publication is effective as of the publication date below and is subject to change without notice.

This publication contains proprietary information that is protected by copyright. All rights are reserved. No part of this document may be reproduced or transmitted in any form or by any means, electronic or mechanical, or translated into another language, without the prior written consent of Deltek, Inc.

This edition published March 2010.

© 2010 Deltek, Inc.

Deltek's software is also protected by copyright law and constitutes valuable confidential and proprietary information of Deltek, Inc. and its licensors. The Deltek software, and all related documentation, is provided for use only in accordance with the terms of the license agreement. Unauthorized reproduction or distribution of the program or any portion thereof could result in severe civil or criminal penalties.

All trademarks are the property of their respective owners.

Contents

Introduction	5
The Examples	5
Consulting	5
Contact Information	5
If You Need Assistance	6
Customer Services	6
Customer Care Connect Site	6
Budgeting and Planning Tier Model and Technologies.....	8
Presentation (Client) Tier	8
Web/Application Tier	8
Database Tier.....	9
n-tier architecture	10
Installation Profile: 1- 25 Concurrent Users	11
Installation Profile: 25+ Concurrent Users	12
Workstation	13

Introduction

Deltek Budgeting and Planning installations can be unique based on customer needs, number of users, budget and desired performance level.

Budgeting and Planning uses a multiple tier architecture typically consisting of:

- A database server
- An IIS/Application Server
- A workstation

This document is meant to serve as a guideline for hardware requirements and provides your firm's IT department with information about the technical deployment of Budgeting and Planning.

The Examples

The examples are based on the number of concurrent Budgeting and Planning users:

- A small/medium installation for 1-25 concurrent users
- A medium/large installation for 25 or more concurrent users

Deltek has designed multiple Budgeting and Planning deployment models to ensure the best fit with your firm's environment.

It is important to note that the choices of hardware, database, and operating system in these examples represent *guidelines*, are subject to change, and do not replace a needs analysis and site survey with a Deltek Technical Consultant. *Contact a Deltek Technical Systems Engineer for suitability of legacy equipment.*

Consulting

Deltek, Inc. can provide onsite consulting and training services as well as phone support on a contract or time-and-materials basis.

Contact Information

Please contact a Deltek Technical Systems Engineer techse@deltek.com for more information.

If You Need Assistance

If you need assistance installing, implementing, or using Budgeting and Planning, Deltek makes a wealth of information and expertise readily available to you.

Customer Services

For over 20 years, Deltek has maintained close relationships with client firms, helping with their problems, listening to their needs, and getting to know their individual business environments. A full range of customer services has grown out of this close contact, including the following:

- Extensive self-support options through the Customer Care Connect Web portal.
- Phone and email support from Customer Care analysts
- Technical services
- Consulting services
- Custom programming
- Classroom, on-site, and Web-based training



Find out more about these and other services from the Customer Care Connect site.

Customer Care Connect Site

The Deltek Customer Care Connect site is a support Web portal for Deltek customers who purchase an Ongoing Support Plan (OSP).

The following are some of the many options you have at the Customer Care Connect site:

- Download the latest versions of your Deltek products
- Search Deltek's knowledge base
- Ask questions, exchange ideas, and share knowledge with other Deltek customers through the Deltek Connect Customer Forums
- Display or download product information, such as release notes, user guides, technical information, and white papers
- Submit a support case and check on its progress
- Transfer requested files to a Customer Care analyst
- Use Quick Chat to submit a question to a Customer Care analyst online
- Subscribe to Deltek communications about your Deltek products and services
- Receive alerts of new Deltek releases and hot fixes



If you need assistance using the Customer Care Connect site, the online help available on the site provides answers for most questions

Access Customer Care Connect

To access the Customer Care Connect site, complete the following steps:

1. Go to <https://support.delttek.com>.
2. Enter your Customer Care Connect **Username** and **Password**.
3. Click **Log In**.



If you do not have a username and password for the Customer Care Connect site, contact your firm's Deltek Administrator.

If you forget your username or password, you can click the **Account Assistance** button on the login screen for help.

Budgeting and Planning Tier Model and Technologies

Presentation (Client) Tier

Presentation (Client) Tier Technologies	
Operating System	<ul style="list-style-type: none"> Windows XP Professional, Windows Vista x32-bit or x64-bit, or Windows 7
Browser	<ul style="list-style-type: none"> Internet Explorer 8.0 Internet Explorer 6.0 or 7.0 Microsoft.NET Framework v.3.5SP1, the infrastructure of the .NET platform, including the Common Language Runtime and the .NET class library.

Web/Application Tier

The Web/Application Tiers are always installed to the same physical server. Operating system, browser, and system requirements for the Web/Application Tier are described in the following table.

Web/Application Tier Technologies	
Operating System	<ul style="list-style-type: none"> Windows 2003 Server x32-bit or x64-bit Windows 2008 Server x32-bit or x64-bit
Browser	<ul style="list-style-type: none"> Internet Explorer 6.0 or higher
System	<ul style="list-style-type: none"> IIS 6.0/7.0; depends on your OS version Microsoft.NET Framework v.3.5SP1, the infrastructure of the .NET platform, including the Common Language Runtime and the .NET class library. Run in .NET 2.0 compatibility mode Native SQL client/OLE DB for database connectivity SMTP services for alerts (optional)

Database Tier

The Database Tier is the repository of all your firm's data and business information.

Operating system, browser, and system requirements for the Database Tier are described in the following table.

For more information regarding the x64 architecture, go to the Microsoft Web site:

<http://www.microsoft.com/windowsserver2003/64bit/x64/editions.mspx>.

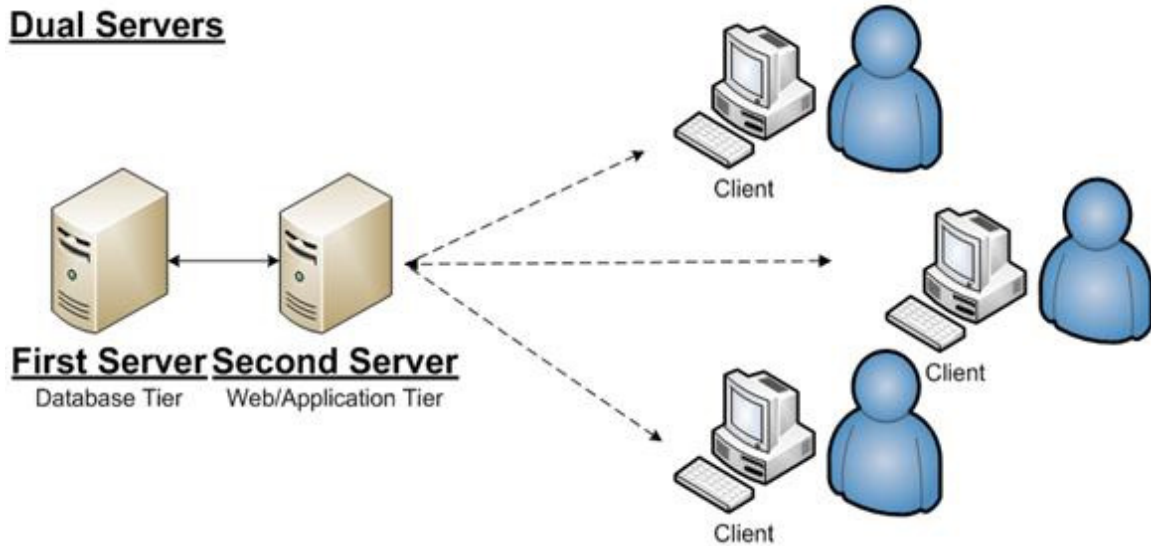
Please contact the Deltek Technical Systems Engineers at techse@deltek.com with any questions.

Database Tier Technologies	
Operating System	<ul style="list-style-type: none">Windows 2003 Server x32-bit or x64-bitWindows 2008 Server x32-bit or x64-bit
System	<ul style="list-style-type: none">Microsoft SQL Server 2005 x32-bit or x64-bit, Express/Workgroup/Standard or Enterprise editionsMicrosoft SQL Server 2008 Sp1, x32-bit or x64-bit, Express/Workgroup/Standard or Enterprise editionsMicrosoft.NET Framework v.3.5SP1, the infrastructure of the .NET platform, including the Common Language Runtime and the .NET class library. Run in .NET 2.0 compatibility mode

n-tier architecture

In an n-tier installation, the processing is occurring on both the web/application and database server. It is recommended that the database tier reside on a different computer than the web/application server. The connection between the web/application server and the database server should limit the number of routers and firewalls that can adversely affect data traffic. Additional users can be supported with the addition of multiple application servers.

Dual Servers



Installation Profile: 1- 25 Concurrent Users

Tier	Hardware/Software Required	Determining Factors
MS SQL Server Database Tier	Server Class Machine: <ul style="list-style-type: none"> ▪ Dual or quad-core 2.8 GHz or faster CPU ▪ 4+ GB Physical memory ▪ 200 GB Hard drive ▪ RAID 5 Disk array ▪ Windows Server 2003 or Windows Server 2008 Standard Edition 32/64-bit ▪ Microsoft SQL Server 2005/2008 Standard/Enterprise ▪ 100 MB Network card 	Database Size Database Growth
IIS/Application Tier	Server Class Machine: <ul style="list-style-type: none"> ▪ Dual/Quad-core 2.33+ GHz or faster CPU ▪ 4 GB Physical memory ▪ Windows Server 2003 or Windows Server 2008 Standard Edition 32/64-bit ▪ 40GB Hard drive space ▪ 100 MB Network card ▪ .Net Framework 3.5 SP1 in .NET 2 compatibility mode ▪ For SQL: SQL Server ole db or native client driver 	Total Users

Installation Profile: 25+ Concurrent Users

Tier	Hardware/Software Required	Determining Factors
MS SQL Server Database Tier	Server Class Machine: <ul style="list-style-type: none"> 2 x Dual or quad-core 2.8 GHz or faster CPU 4+ GB Physical memory 200GB Hard drive RAID 5 Disk array Windows Server 2003 or Windows Server 2008 Standard Edition 32/64-bit Microsoft SQL Server 2005/2008 Standard/Enterprise 100 MB Network card 	Database Size Database Growth
IIS/Application Tier	Server Class Machine: <ul style="list-style-type: none"> 2 x Dual/Quad-core 2.33+ GHz or faster CPU 4 GB Physical memory Windows Server 2003 or Windows Server 2008 Standard Edition 32/64-bit 40GB Hard drive space 100 MB Network card .Net Framework 3.5 SP1 in .NET 2 compatibility mode For SQL: SQL Server ole db or native client driver 	Total Users

Workstation

The following table lists the recommended minimum hardware and software requirements for the Client Tier.

Tier	Hardware/Software Required	Determining Factors
Minimum	<ul style="list-style-type: none"> Intel 1.8 GHz or higher 1 GB RAM 40 GB Hard Drive 1024x768 SVGA Video Display 100 MB Network card Windows XP Professional, Vista x32 bit or x64 bit, or Windows 7 Microsoft Internet Explorer (IE) 6.0 or higher Microsoft.NET Framework v.3.5 SP1 	Usage

Workstation

The following table lists the recommended hardware and software requirements for the Client Tier.

Tier	Hardware/Software Required	Determining Factors
Minimum	<ul style="list-style-type: none"> Intel 2.0 GHz or higher 2 GB RAM 40 GB Hard Drive 100 Mb Network Card Windows XP Professional, Vista x32 bit or x64 bit, or Windows 7 Microsoft Internet Explorer (IE) 6.0 or higher Microsoft.NET Framework v.3.5 SP1 	Usage