

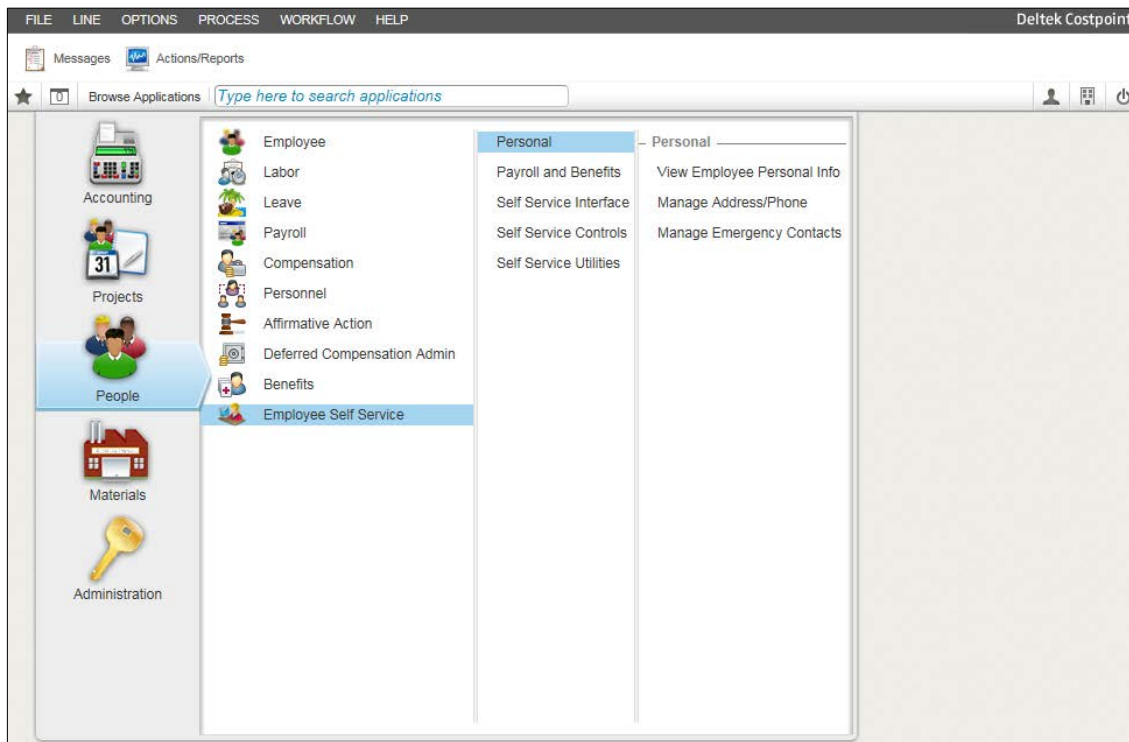
# Deltek Costpoint HotFix Readme

**Released: June 27, 2016**

## Enhancements

### Employee Self Service is now in Costpoint

Employee Self Service applications are now available in a new module on Costpoint version 7.1.1. This functionality is available through the following menu location: **People » Employee Self Service**.



Employee Self Service provides smart and easy-to-use solutions for your Human Resources (HR) and Payroll needs. These applications have the power and flexibility to support companies using Deltek Costpoint. A brief listing of some of the new capabilities in this module are:

- Maintenance of emergency contacts
- Handling life events
- Benefits enrollment
- Management of payroll-related data, such as withholdings, direct deposits, W-2s, and retirement benefits

### Benefits of Costpoint Employee Self Service

When you deploy the Employee Self Service module in Costpoint 7.1.1, you gain the following advantages:

- **Web services/extensibility** — Provides ability to customize and extend product functionality. It also provides ability to create custom integrations.
- **Enhanced authentication methods** — Provides enhanced Lightweight Direct Access Protocol (LDAP), single sign on (SSO), two-factor authentication (2FA), and mixed authentication capabilities.
- **Infrastructure enhancements such as WebLogic clustering support** — Provides benefits such as true failover support where user does not lose session when WebLogic node goes down.

- **Screen personalization** — Allow you to modify screens and save layout for a user or group of users
- **Tablet/phone support** — Provides automatic screen layout optimization when used with a tablet or phone
- **Content management integration** — Provides content management integration with SharePoint and other CMIS compliant systems (same as Costpoint).
- **Lower Cost of Operation** — Provides deployment option to combine/share application and web servers for CP and ESS as single deployment
- **Common user interface** — Provides consistent user interface for all users
- **Streamlined deployment** — Provides common process for product installation and ongoing deploying of hot fixes across Costpoint, Delttek Time & Expense, and Budgeting & Planning.
- **Standard Management and Monitoring** — Uses the same set of system management and monitoring capabilities across three products.
- **Standard Customer Care** — Uses the same process and artifacts when working with Customer Care.

### Costpoint Employee Self Service Applications

Employee Self Service applications can be classified into the following types:

- **View/Maintenance Applications**
  - Configure Self Service Settings
  - Manage Address/Phone
  - Manage Emergency Contacts
  - Manage Direct Deposit
  - Manage Federal Withholding
  - Manage State Withholding
  - Manage Retirement Benefits
  - Manage Dependents and Beneficiaries
  - Manage Custom Text
  - Self Service Status
- **Process Application**
  - Synchronize Life Events
- **Inquiry Applications**
  - View Employee Personal Info
  - Charge Activity
  - View Payroll Checks
  - View Expense Checks
  - View Leave Status
  - View Electronic W2
  - View Total Comp\Benefits Statement
- **Transaction Applications**
  - Perform Life Event
  - Perform Benefits Enrollment

## Costpoint Employee Self Service Licensing

**A new license key is required to use the new Employee Self Service module in Costpoint 7.1.1.** As a module within Costpoint, Employee Self Service licensing is based on the number of employees rather than the named user. Therefore, before issuing the required Costpoint Employee Self Service license key, you will be required to sign an **“Acknowledgement of Conversion”** for your Employee Self Service licenses.

For a small subset of Employee Self Service clients, Deltak identified a disparity between the number of Costpoint licenses and the number of Employee Self Service licenses. If your license counts do not match, please contact your Account Manager.



For Employee Self Service customers planning to deploy the new Costpoint Employee Self Service module in Costpoint 7.1.1, please see Knowledge Base Article [87536](#) for information on requesting new Employee Self Service license keys.

## System JAR Requirement

These enhancements require Costpoint 7.1.1 SYSTEM JAR 018.

## Application JAR Requirements

The following table shows the required application JAR version for each screen affected by this update:

Domain	Module	Application ID	Application Name	Application JAR
PE	EM	AOPESSDB	Update Benefit Option/Election Tables	cp711_aopessdb_005.jar
PE	ESS	ESMADDRESSPHONE	Manage Address/Phone	cp711_esmaddressphone_002.jar
PE	ESS	ESMBENENROLL	Perform Benefits Enrollment	cp711_esmbenenroll_002.jar
PE	ESS	ESMCUSTTXT	Manage Custom Text	cp711_esmcusttxt_001.jar
PE	ESS	ESMDEPBEN	Manage Dependents and Beneficiaries	cp711_esmdepben_002.jar
PE	ESS	ESMDES BEN	Designate Beneficiaries	cp711_esmdesben_001.jar
PE	ESS	ESMDIRDEP	Manage Direct Deposit	cp711_esmdirdep_002.jar
PE	ESS	ESMELECW2	View Electronic W2	cp711_esmelecw2_002.jar
PE	ESS	ESMEMERCON	Manage Emergency Contacts	cp711_esmemercon_002.jar
PE	ESS	ESMESS	Configure Self Service Settings	cp711_esmess_002.jar
PE	ESS	ESMEXPCHECKS	View Expense Checks	cp711_esmexpchecks_002.jar
PE	ESS	ESMFEDWH	Manage Federal Withholding	cp711_esmfedwh_002.jar
PE	ESS	ESMLIFEEVENT	Perform Life Event	cp711_esmlifeevent_002.jar
PE	ESS	ESMPAYCHECKS	View Payroll Checks	cp711_esmpaychecks_003.jar

PE	ESS	ESMRETBEN	Manage Retirement Benefits	cp711_esmretben_002.jar
PE	ESS	ESMSTATEWH	Manage State Withholding	cp711_esmstatewh_002.jar
PE	ESS	ESPSELFSESVUTIL	Synchronize Life Events	cp711_espselselfservutil_002.jar
PE	ESS	ESQCOMP BEN	View Total Comp/Benefits Statement	cp711_esqcompben_002.jar
PE	ESS	ESQEMPLPERINFO	View Employee Personal Info	cp711_esqemplperinfo_002.jar cp711_esqeducskltn_001.jar
PE	ESS	ESQLVSTAT	View Leave Status	cp711_esqlvstat_002.jar
PE	ESS	ESRSELFSESVSTAT	Self Service Status	cp711_esrselselfservstat_001.jar

More information about this release is on the following page.

## Custom Programs Affected:

Sometimes an update can cause custom programs and reports to stop working as expected. Before applying this update, consider whether you have any custom programs or reports in the application area affected by the update. If so, contact Deltek Customer Care at <http://support.deltek.com> before you install the update.

## To Download the HotFix Update:

1. From Internet Explorer, go to <https://dsm.deltek.com>.
2. Click **Run Deltek Software Manager**.
3. Log in using your Deltek Customer Care Connect credentials.
4. In the left pane of the Deltek Software Manager, expand your Deltek product.
5. Expand the Hot Fixes folder for your product, and select the update to download.
6. Click **Download** at the bottom of the screen.

## To Install the HotFix Update:

Refer to the installation instructions posted on Deltek's Customer Care Connect site, <https://deltek.custhelp.com>.

- For Costpoint 7.1.1 updates, refer to Knowledge Base article 79232.
- For Costpoint 7.0.1 updates, refer to Knowledge Base article 73769.
- For Costpoint 7.0 updates, refer to Knowledge Base article 67722.

Before you install this update, please review all previous updates in the Knowledge Base article. You may need to install prerequisite programs or database patches (described in the Knowledge Base article) prior to installing this update. Note that when you download an update using Deltek Software Manager (DSM), all dependent files are automatically downloaded.

## To Check to See if the HotFix is Installed:

1. Open the application that was updated.
2. Click **Help > About Costpoint** from the Costpoint toolbar. This will display a screen that shows you the latest update JAR for the application that is open, as well as the latest system JAR and all patches applied to the system.

## More Information:

If you have any questions, please contact Deltek Customer Care at <https://support.deltek.com>.