

# Deltek Cobra®8.7

Release Notes

December 8, 2025  
Revised: December 18, 2025



While Deltek has attempted to verify that the information in this document is accurate and complete, some typographical or technical errors may exist. The recipient of this document is solely responsible for all decisions relating to or use of the information provided herein.

The information contained in this publication is effective as of the publication date below and is subject to change without notice.

This publication contains proprietary information that is protected by copyright. All rights are reserved. No part of this document may be reproduced or transmitted in any form or by any means, electronic or mechanical, or translated into another language, without the prior written consent of Deltek, Inc.

This edition published December 8, 2025.

© 2025 Deltek, Inc.

Deltek's software is also protected by copyright law and constitutes valuable confidential and proprietary information of Deltek, Inc. and its licensors. The Deltek software, and all related documentation, is provided for use only in accordance with the terms of the license agreement. Unauthorized reproduction or distribution of the program or any portion thereof could result in severe civil or criminal penalties.

All trademarks are the property of their respective owners.

# Contents

- OVERVIEW.....1
- PRE-INSTALLATION INFORMATION.....2
- NEW FEATURES AND ENHANCEMENTS.....3
  - SUPPORT FOR PPM ADMINISTRATOR..... 3
  - SUPPORT FOR AUTHORIZED CONTROL COUNTRIES.....9
  - SUPPORT FOR PROGRESS TECHNIQUE AS A PROCESS CRITERION..... 11
  - SUPPORT FOR PROGRESS TECHNIQUE AS A REPORT CRITERION..... 12
  - CALCULATE PROGRESS FOR APPORTIONED RESOURCES USING THE ASSIGNMENT % COMPLETE TECHNIQUE ..... 14
  - OPEN PLAN STEPS INTEGRATION..... 16
  - AUTOMATIC POPULATION OF MISSING KEY FIELD DATA DURING ACTUAL COST INTEGRATION..... 17
  - ENHANCEMENTS TO THE REPLACE RESOURCES PROCESS..... 18
  - CUSTOM SUMMARY PERFORMANCE IN IPMDAR EXPORT..... 21
  - API SUPPORT FOR THE ZERO-OUT DATA PROCESS..... 22
  - API AND WEB SERVICE SUPPORT FOR THE FREEZE FORECAST PROCESS..... 22
  - ENHANCED ERROR AND WARNING DOCUMENTATION FOR INTEGRATION..... 22
  - SUPPORT FOR MOD REPORTING..... 23
  - SECURING CUSTOM HOOKS..... 23
- SOFTWARE ISSUES RESOLVED..... 24
  - SECURITY ENHANCEMENTS..... 24
- DATABASE CHANGES..... 25
  - TABLES..... 25
  - COLUMNS..... 25
  - INDEXES..... 26
  - OBJECTS..... 26
- DATA CHANGES..... 27
- APPENDIX A: FOR ADDITIONAL INFORMATION..... 31



# Overview

Welcome to Deltek Cobra 8.7 Release Notes.

These release notes contain a summary of the following:

- New Features and Enhancements
- Software Issues Resolved
- Database and Data Changes

## Viewing the Help System

The Deltek Cobra Help System provides help for all areas of the Cobra application. To access all documents available for Cobra 8.7, click <https://help.deltek.com/Product/Cobra/8.7/GA>.

**Note:** You can access the Help system using Microsoft Edge, Chrome, or Firefox.

## Pre-Installation Information

Before you begin the installation and setup of Cobra, it is important to understand the following information.

### Pre- and Post-Installation Checklists

The *Deltek Cobra 8.7 Installation Guide* provides pre- and post-installation checklists that include all of the necessary steps for a successful implementation. Deltek recommends reviewing these topics for both new and upgrade installations to ensure that you have the correct configuration.

### Software Requirements (Compatibility Matrix)

To see the list of the supported and compatible technologies, see the "System Requirements" section in the *Deltek Cobra 8.7 Installation Guide*.

For a complete list of the recommended minimum software requirements, see the *Deltek Product Support Compatibility Matrix* document that you can download from the [Deltek Support Center](#) site.

### Integration with PM Compass

If you are upgrading from one version of Cobra to another and are using PM Compass, ensure that you install the version of the Cobra Integration for PM Compass file that supports the Cobra and PM Compass versions you plan to use. The Cobra Integration for PM Compass file is usually released prior to or at the same time as the PM Compass Cumulative Update that you are using on your PM Compass server.

**Attention:** For more information on the PM Compass Cumulative Update and Integration Release Notes, download the related document from the [Deltek Support Center](#) site. If you have any questions, contact a Deltek Support Services analyst.

## New Features and Enhancements

This section includes summaries of the new features and enhancements in this release.

### Support for PPM Administrator

Cobra now supports Deltek PPM Administrator, the next-generation replacement for Deltek EPM Security Administrator.

PPM Administrator consolidates the legacy desktop and smart client versions into a modern, web-based tool that streamlines security management across the Deltek PPM suite. It offers enhanced usability, centralized access control, and improved integration with products like Cobra, Open Plan, and PM Compass.

#### Attention:

- For a complete list of PPM Administrator features and updates, refer to the [Deltek PPM Administrator 1.0 Release Notes](#).
- For details on how to install and configure PPM Administrator, refer to the [Deltek PPM Administrator 1.0 Installation Guide](#).
- For more information on how to use PPM Administrator, refer to the [Deltek PPM Administrator Help System](#).

**Important:** Whether you plan to use EPM Security Administrator or PPM Administrator, you must download the selected application from Deltek Software Manager and install it separately.

### Transitioning to PPM Administrator Starting with Cobra 8.7

Starting with Cobra 8.7, the EPM Security Administrator desktop version is no longer included in the Cobra installer. If you upgrade from an earlier version of Cobra, the EPM Security Administrator tool will be removed.

**To ensure a smooth transition to the latest security management tool, consider the following steps:**

#### Step 1: Review Your Environment

Identify which PPM products are installed in your database and confirm their compatibility with PPM Administrator.

**Attention:** For more information, refer to the "Supported PPM Product Versions" section in the [Deltek PPM Administrator Release Notes](#).

#### Step 2: Identify the Right Administration Approach for Your Current Setup

- **A. If All Your PPM Products Are Already Compatible with PPM Administrator**  
If all your installed PPM products are already compatible with PPM Administrator, Deltek recommends installing PPM Administrator to enable a unified, web-based administration experience with the latest features and security enhancements.
- **B. If Your Environment Has Mixed Compatibility**  
If your environment includes PPM products that are not yet fully compatible with PPM Administrator, you can still install PPM Administrator to take advantage of its enhanced security

features where supported. Note that some administrative functions may not be available. In such cases, use the EPM Security Administrator tool included with the non-compatible product version to perform tasks not yet available in PPM Administrator.

**Attention:** For more details on the supported features and limitations, refer to the [Deltek PPM Administrator Release Notes](#) and Help System.

- **C. If Your Cobra Installation is Stand-Alone**

If you use Cobra as a stand-alone product, you may install either the updated EPM Security Administrator desktop version 8.6 or PPM Administrator, whichever best suits your setup, to manage your security administration needs.

**Attention:** For more information, refer to the [Deltek EPM Security Administrator 8.6 Release Notes](#), [Deltek EPM Security Administrator 8.6 Installation Guide](#), and Help System.

If you have multiple PPM products installed, some may support EPM Security Administrator while others use PPM Administrator. In such cases, certain settings, like the list of users and groups, are reflected in both tools. However, some settings have been updated specifically in PPM Administrator.

- For users on Basic Authentication, tasks such as setting passwords (including assigning temporary passwords and using Forgot Password) and adding new user records must be done in EPM Security Administrator.
- Changing system-level settings in PPM Administrator, such as Polling, Authentication, and Password Policies, will update the corresponding product-level settings in EPM Security Administrator.

**Important:**

- For environments with mixed compatibility, review the "Potential Compatibility Issues" section found in the PPM Administrator documents for feature limitations and guidance on when to use PPM Administrator versus EPM Security Administrator.
- Ensure your installed PPM products meet the minimum compatible version requirements for PPM Administrator.

**To ensure full compatibility with PPM Administrator, several enhancements have been implemented in Cobra.**

### Updates to the Authentication Modes

Authentication modes are now centralized across all PPM products. When you perform a new installation or upgrade from an earlier version of Cobra, the authentication mode will default to Basic Authentication. If your setup requires Windows Authentication, your system administrator can configure this mode using PPM Administrator or EPM Security Administrator.

**Attention:** For more information, see the "Login and Authentication" topic in the Cobra Help System.

## Defining Password Policies in Basic Authentication Mode

You can now set specific criteria for user passwords, configured through PPM Administrator or EPM Security Administrator. This feature is fully enabled when all installed PPM products are compatible with PPM Administrator.

## Sending Temporary Passwords to Email in Basic Authentication Mode

Passwords can now be changed at the user level. If your environment is fully compatible with PPM Administrator and the user uses Basic Authentication, click the **Forgot your password or user ID?** link in the Login dialog box. In the Forgot Password dialog box, select **I forgot my password** and then enter your **User ID**. Click **Send** to receive a temporary password by email.

System administrators can also trigger this feature using PPM Administrator or EPM Security Administrator (**Users » Authentication tab » Basic Authentication » Set Password.**)

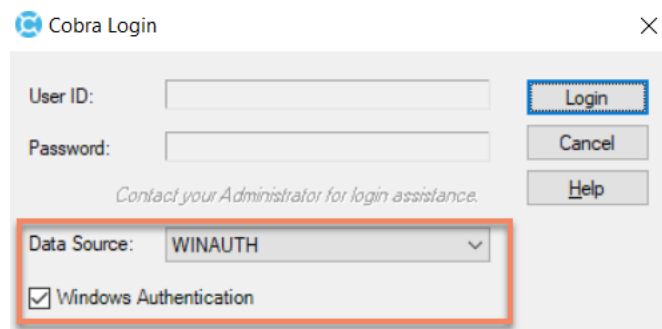
**Note:** Communication settings must be configured correctly for this feature to work.

## Login Dialog Box Enhancements

To strengthen usability and security and ensure better alignment with the authentication workflow, the following updates have been made to the Cobra Login dialog box:

- The **Windows Authentication** checkbox is now available in the Login dialog box when you select a data source that uses Mixed Authentication or Windows Authentication.

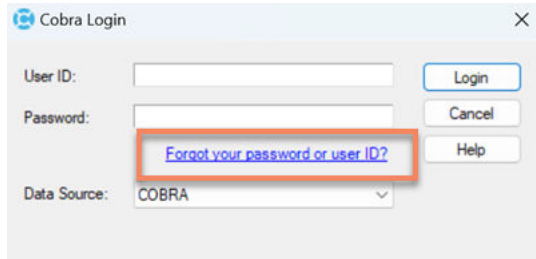
When you select the checkbox, Cobra will no longer prompt for a username or password and instead log you into the application using your Windows login credentials.



**Figure 1: Windows Authentication Checkbox**

**Attention:** For more information, see the "Cobra Login Dialog Box" and "Login and Authentication" topics in the Cobra Help System.

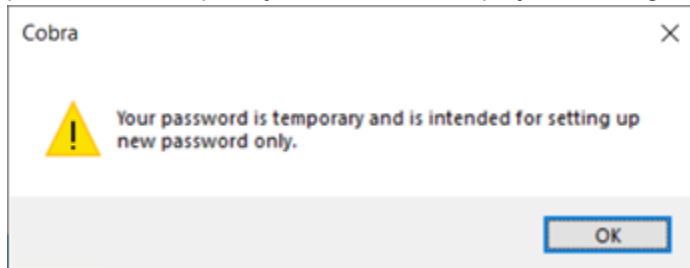
- The Forgot your password or user ID link is now available in the Login dialog box. Clicking the link displays the Forgot Password dialog box.



**Figure 2: Forgot Your Password or User ID Link**

**Attention:** For more information, see the "Forgot Password Dialog Box Implementation" section below.

- When you enter your password in the Login dialog box, Cobra now checks whether the password is temporary. If it is, Cobra displays a message box.



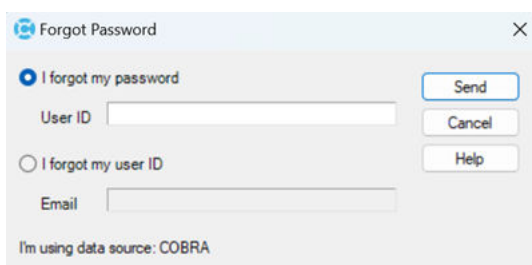
**Figure 3: Temporary Password Message**

Clicking **OK** displays the Set New Password dialog box.

**Attention:** For more information, see the "Set New Password Dialog Box Implementation" section below.

## Forgot Password Dialog Box Implementation

You can now use the Forgot Password dialog box to recover either your password using your user ID or your user ID using your email.



**Figure 4: Forgot Password Dialog Box**

**Attention:** For more information, see the "Forgot Password Dialog Box" topic in the Cobra Help System.

## Set New Password Dialog Box Implementation

You can now use the Set New Password dialog box to replace your temporary password with a new one and proceed with logging into Cobra.

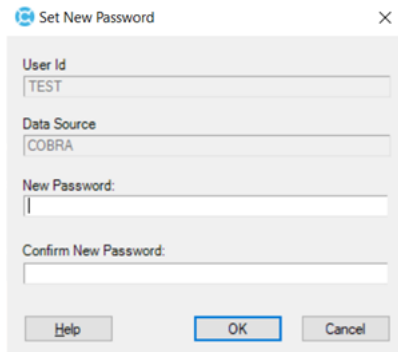


Figure 5: Set New Password Dialog Box

**Attention:** For more information, see the "Set New Password Dialog Box" topic in the Cobra Help System.

## Change Password Dialog Box Enhancement

The Change Password dialog box has been updated to align with the PPM Administrator Change Password page for a more consistent user experience. For example, the label **Re-enter New Password** has been renamed to **Confirm New Password**.

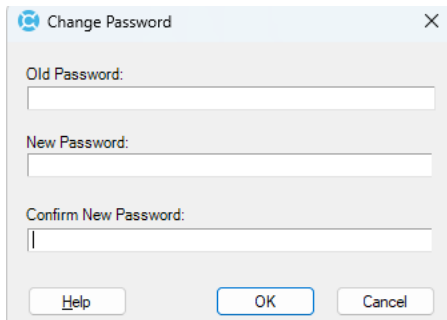


Figure 6: Change Password Dialog Box

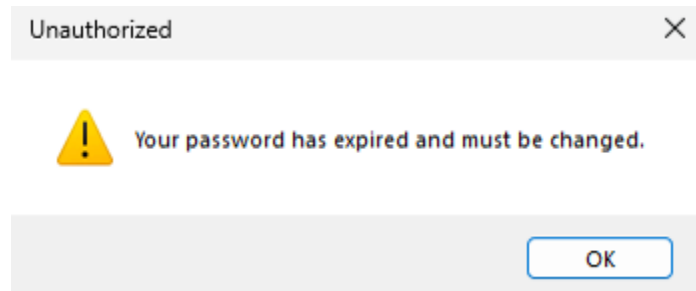
In addition, Cobra now adheres to the established password policies configured through the Password Policies form in PPM Administrator.

**Note:** Beginning with Cobra 8.7, blank passwords are no longer allowed. If you are upgrading from an earlier version of Cobra, GUEST accounts will be required to update their passwords during login. If not all installed PPM products are compatible with PPM Administrator, system administrators should use EPM Security Administrator to update user passwords.

**Attention:** For more information, see the "Change Password Dialog Box" topic in the Cobra Help System.

## Support for Password Expiration

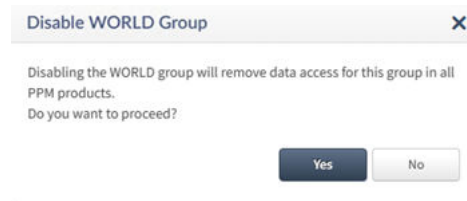
When you log into Cobra using an expired password, Cobra now displays a message box informing you that your password has expired. Clicking **OK** displays the Change Password dialog box, where you can update your password.



**Figure 7: Expired Password Message Box**

## WORLD Group Access Control Updates

Cobra now respects the **Disable WORLD Group** option on the System Settings tab of the System form in PPM Administrator. When you select this option in PPM Administrator, all data access for the WORLD group will be removed from **all PPM products**.



**Figure 8: Disable WORLD Group Message Box**

In Cobra, the WORLD group is removed from any areas that include it in the access control list, such as:

- Access Control page of the wizard
- Access Control tab of the Properties dialog box (for example, Project Properties)
- Change Access Rights dialog box
  - Groups Lookup dialog box in the Delete From Access Lists section
  - Selected Objects Access Control grid
- Configuration Security dialog box
- Manage Views dialog box

**Note:** Cobra does not automatically clear the WORLD group access rights for sorts and filters. While the WORLD group may still display in applicable fields, Cobra ignores the reference. Once another group is selected, the WORLD group cannot be reselected.

**Attention:** For more information, see the "Access Control" topic in the Cobra Help System.

## Enhanced Authentication Support for Cobra API and Web Service

When Cobra is configured to use Windows Authentication, SYSADMIN users can now log in using Basic Authentication through both the API and the Cobra Web Service. This enhancement enables SYSADMIN users to authenticate with their username and password credentials when interacting with Cobra through the API or Web Service.

**Attention:** For more information, see "API," "Connecting to the Cobra Web Service Host," and "Login and Authentication" topics in the Cobra Help System.

## Database and Data Updates

Cobra includes database and data structure changes to support integration with PPM Administrator. These updates ensure compatibility with PPM Administrator and EPM Security Administrator installations and may affect system tables, password handling, and version validation processes.

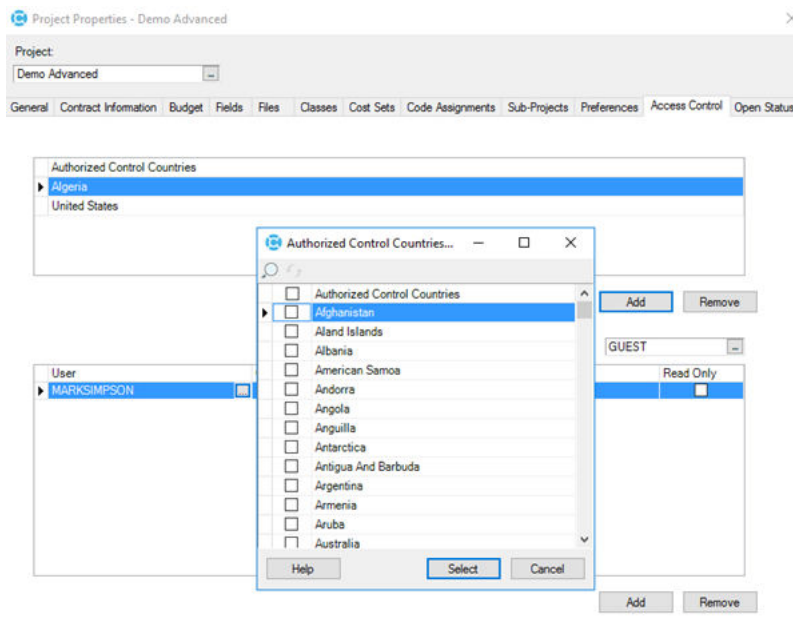
**Attention:** For full details, refer to the Database and Data Changes sections of the *Deltek Cobra 8.7 Release Notes* and the *Deltek Cobra 8.7 Data Structure Guide*.

## Support for Authorized Control Countries

Cobra now supports region-based access control through the Authorized Control Countries (ACC) feature.

This functionality becomes available in Cobra when the **Enable Authorized Control Countries Validation** option is selected on the Settings tab of the Systems form in PPM Administrator.

Once the ACC feature is enabled in PPM Administrator, Cobra enforces access control by displaying the Authorized Control Countries grid on the Access Control tab of the Project Properties dialog box and on the Access Control page of the New Project Wizard. This grid enables you to assign country-specific access permissions to users and groups for the selected project.



**Figure 9: Access Control Tab of the Project Properties Dialog Box**

**Figure 10: Access Control Page of the New Project Wizard**

You can configure ACC assignments at multiple levels:

- At the user level, you can assign individuals one or more control countries using PPM Administrator. They can access projects that match at least one of their assigned countries.
- At the group level, you can assign each group a single control country using PPM Administrator. Users whose ACC assignments include the group's control country can join that group.
- At the project level, you can assign one or more control countries to a project. You can then assign users or groups with matching ACC assignments to the project's access control list (ACL).

**Attention:** For more information on the ACC feature, see the following topics in the PPM Administrator Help System:

- "System Settings Tab"
- "Groups General Tab"
- "Users General Tab"

Cobra enforces ACC guidelines by permitting only users and groups with at least one ACC assignment matching the project's ACC to be added to the project's ACL or assigned as project owner.

**Note:** The complete guidelines on assigning users and groups to project ACLs or changing project ownership based on ACC assignments is documented in the Cobra Help System.

ACC information is included in the following:

- Exported files when running either the Cost Data-Deltek Common Data Export or wInsight-XML Export

- Projects created using the Save As or Copy Project functionality
- Project backup files
- Restored projects, regardless of whether the **Enable Authorized Control Countries Validation** option is enabled in PPM Administrator

**Note:** As part of this release, the Restore process does not include validation of the user's Authorized Control Countries assignments against those in the backup file or the existing project in Cobra. These validations are planned for a future enhancement.

**Attention:** For more information on the ACC feature, see the "Authorized Control Countries" topic in the Cobra Help System.

## Support for Progress Technique as a Process Criterion

You can now select a progress technique as a criterion when running Cobra processes, offering greater flexibility in processing.

The **Progress Technique** option has been added to the **Criteria** field in the following wizards:

- Criteria Selection page of the Recalc Wizard
- Criteria page of the Reclass Wizard
- Criteria page of the Replan Wizard
- Criteria Selection page of the Replace Resources Wizard
- Criteria Selection page of the Respread Wizard
- Criteria Selection page of the Top-Down Planning Wizard
- Criteria Selection page of the Update Codes Wizard
- Criteria Selection page of the Zero-Out Data Wizard

When you select the **Progress Technique** option, you can choose only one progress technique in the **Selection** field, and the **Include all children** option will be disabled.

Recalc

**Criteria Selection**  
Please select the criteria for the recalc process.

Criteria:  
Progress Technique

Selection:  
Milestones

Include all children

Help <Back Next> Finish Cancel

**Figure 11: Criteria Selection Page of the Recalc Wizard**

**Note:** This enhancement has also been applied to processes that can be executed through the API or Cobra Web Service.

In addition, Cobra automatically sets or displays options based on your input in the **Selection** field.

## Support for Progress Technique as a Report Criterion

You can now use a progress technique as a criterion when running the following report types:

- CPR
- Graph
- CrossTab
- CrossTabCriteria
- Pivot

On the Sub-Totals page of the Report Wizard, select **Progress Technique**.

### Sub-Totals

Please select the sub-totals to show on the report.

Available Sub-Totals

Criteria
Work Package.Charge Number
Work Package.WP
Work Package.WP F3
Work Package.WP F4
Work Package.WP F5
Work Package.WP F6
Work Package.WP F7
Work Package.WP F8
Work Package.WP F9
WP F5.IPT Lead
WP F5.eCAM Drill Down
Resource Assignment.RA CF1
CAM
Work Package Manager
Progress Technique

Selected Sub-Totals (Maximum of 4)

Criteria	Level	Show Total	New f
Progress Technique	0	<input checked="" type="checkbox"/>	<input type="checkbox"/>

Include empty code assignments  
 Include Control Accounts/Work Packages with no data

Help <Back Next> Finish Cancel

**Figure 12: Sub-Totals Page of the Report Wizard**

The report displays the descriptive name of the progress technique instead of its ID.

Progress Technique	START	JUN07	JUL07	AUG07
Apportioned				
Budget	0.00	0.00	0.00	0.00
Est. At Compl	0.00	0.00	0.00	0.00
Calculated Apportionment				
Budget	0.00	0.00	0.00	0.00
Est. At Compl	0.00	0.00	0.00	0.00
Earned As Spent				
Budget	0.00	0.00	0.00	0.00
Est. At Compl	0.00	0.00	0.00	0.00
50-50				
Budget	0.00	14,759.77	14,089.01	0.00
Actual Costs	0.00	13,609.72	21,428.20	0.00
Earned Value	0.00	7,746.30	12,904.27	0.00
Est. At Compl	0.00	13,609.72	21,428.20	0.00
100-0				
Budget	0.00	0.00	0.00	0.00
Est. At Compl	0.00	0.00	0.00	0.00
Level of Effort				
Budget	0.00	0.00	0.00	0.00
Est. At Compl	0.00	0.00	0.00	0.00

Figure 13: Generated Report with Progress Technique Column

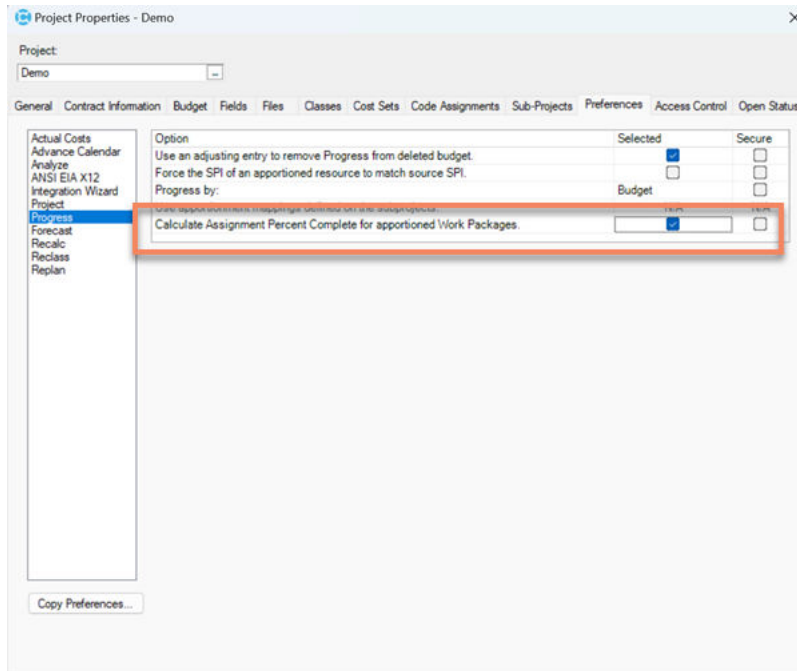
**Attention:** For more information, see the "Sub-Totals Page of the Report Wizard" topic in the Cobra Help System.

### Calculate Progress for Apportioned Resources Using the Assignment % Complete Technique

You can now run the Calculate Progress process against work packages that include apportioned resources using the Assignment % Complete progress technique.

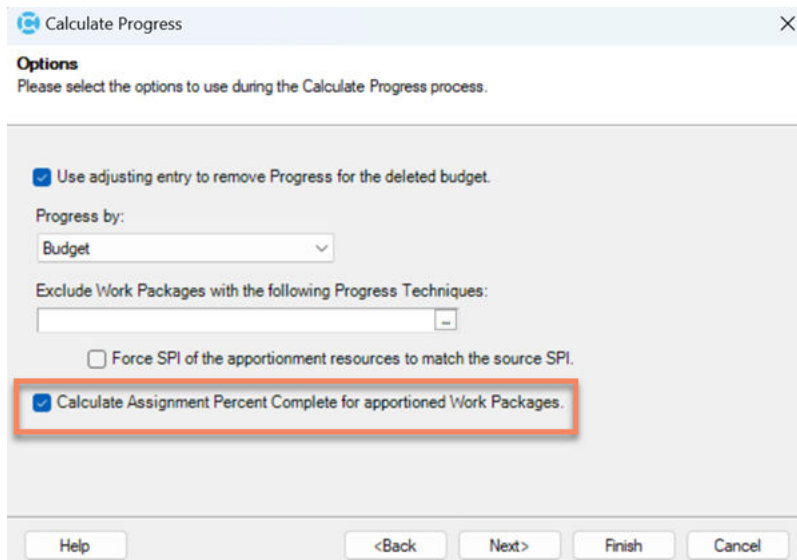
This enhancement ensures accurate progress calculations for apportioned resources, streamlining project tracking and improving alignment with earned value management practices.

To utilize this feature, select the **Calculate Assignment Percent Complete for apportioned Work Packages** option on the Progress Preferences tab of the Project Properties dialog box.



**Figure 14: Progress Preferences Tab of the Project Properties Dialog Box**

When you run the Calculate Progress Wizard, select the **Calculate Assignment Percent Complete for apportioned Work Packages** option on the Options page.



**Figure 15: Options Page of the Calculate Forecast Wizard**

This option evaluates all budget classes with the Include in Budget option selected. When you select it, Cobra will apply percent complete values from source resources to their corresponding apportioned resources based on the apportionment definitions in the assigned resource file.

**Attention:** For more information on this option, see the "Options Page of the Calculate Progress Wizard" and "Progress Preferences" topics in the Cobra Help System.

When you run the Calculate Progress process through the API, use the **CalcAsgPercentComplete** setting.

**Attention:** For more information on this setting, see the "Calculate Progress Process" topic in the Cobra Help System.

This feature is also supported in the Cobra Web Service.

**Attention:** For more information, see the following topics in the Cobra Web Service Client API Help System:

- "CalculateProgressServiceArguments Class"
- "CalculateProgressServiceArguments Properties"

## Open Plan Steps Integration

You can now import steps and step status from Open Plan into Cobra through the integration process, improving progress accuracy and reducing manual effort.

Steps will be imported only if the progress technique in Open Plan is set to **Steps**. If it is not set to **Steps**, Cobra will still load steps for a work package if the **Allow entering milestones/steps regardless of Progress Technique** option is selected on the Project Preferences tab of the Project Properties dialog box.

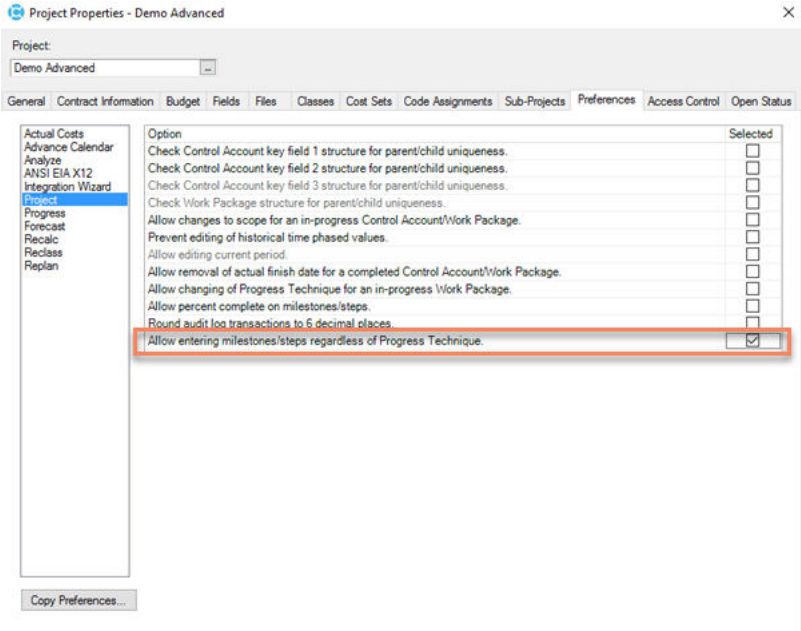


Figure 16: Project Preferences Tab of the Project Properties Dialog Box

However, if that option is not selected and the work package is either planned or in-progress, and you have permission to change the progress technique, Cobra will automatically update the progress technique to **Steps** to support step-level progress tracking.

**Attention:** For more information on how Cobra determines whether to load steps or milestones based on the selected progress technique, the **Allow entering milestones/steps regardless of Progress Technique** option, and the presence of milestone codes or steps in the Open Plan table, see the "How Cobra Loads Milestones or Steps Based on Progress Technique and Option Settings" topic in the Cobra Help System.

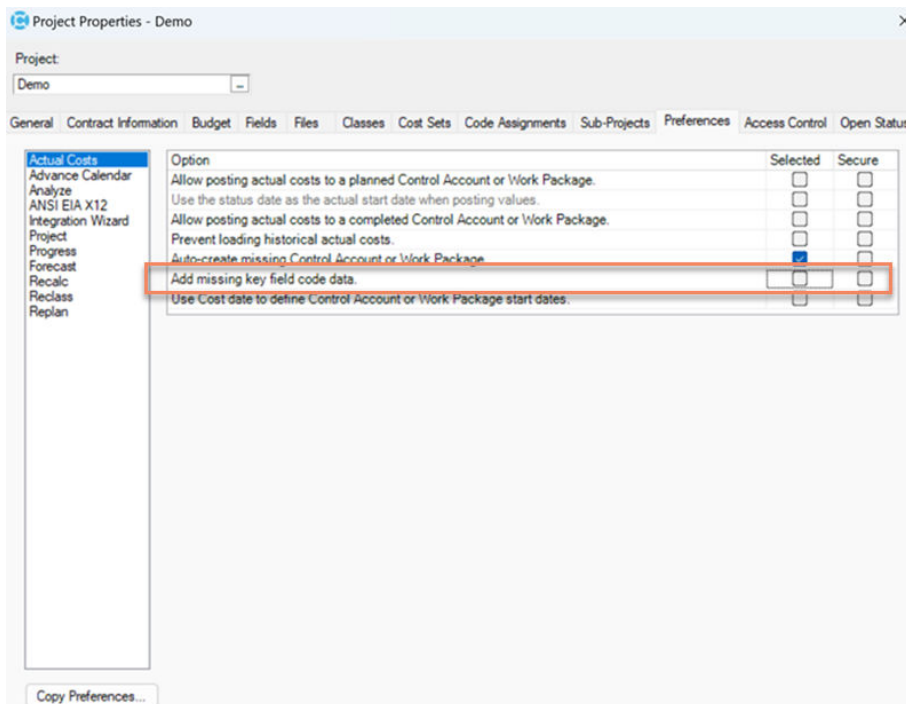
## Automatic Population of Missing Key Field Data During Actual Cost Integration

You can now choose to automatically populate missing key field data in associated code files when creating control accounts and work packages during the Actual Cost Integration process.

This enhancement eliminates the need to manually update code files before reloading the import file, streamlining the integration workflow.

To utilize this feature, select the **Add missing key field code data** option on the Actual Costs Preferences tab of the Project Properties dialog box.

**Note:** This option is enabled only if you select the Auto-create missing Control Account or Work Package option.



**Figure 17: Actual Costs Preferences Tab of the Project Properties Dialog Box**

When you run the Actual Cost-Integration Wizard, select the **Add missing key field code data** option on the File Selection page.

Integration Wizard

**File Selection**  
Select your project and define the file or database connection that contains the actual cost records.

Project:  
Demo

Actual cost file:  
[Browse]

Connection name:  
[Browse] [New] [Edit] [Test]

Actual cost file contains records at the following level:  
Work Package

Auto-create missing Control Account or Work Package  
 Add missing key field code data  
 Use Cost date to define Control Account or Work Package start dates

[Help] [ <Back ] [ Next > ] [ Finish ] [ Cancel ]

**Figure 18: File Selection Page of the Actual Cost-Integration Wizard**

**Attention:** For more information, see the "File Selection Page of the Integration Wizard" and "Actual Costs Preferences" topics in the Cobra Help System.

## Enhancements to the Replace Resources Process

The Replace Resources process now includes improved usability features in both the Cobra application and API, aligning it more closely with other Cobra processes.

You can now:

- Save and secure specific settings
- Apply changes to a portion of data based on selected criteria
- Specify which work packages should be affected
- Limit replacements to future periods

These enhancements eliminate the previous all-or-nothing approach, offering greater control and flexibility in resource management.

To support these improvements, the following new pages have been added to the Replace Resources Wizard:

The screenshot shows a dialog box titled "Replace Resources" with a close button (X) in the top right corner. Below the title bar, the section is labeled "Options" and contains the instruction "Please select the options to use during the Replace Resources process." The main area of the dialog contains three unchecked checkboxes: "Include completed Control Accounts and Work Packages", "Include in-progress Control Accounts and Work Packages", and "Recalculate after processing". At the bottom of the dialog, there are five buttons: "Help", "<Back", "Next>", "Finish", and "Cancel".

**Figure 19: Options Page**

The screenshot shows a dialog box titled "Replace Resources" with a close button (X) in the top right corner. Below the title bar, the section is labeled "Criteria Selection" and contains the instruction "Please select the criteria for the Replace Resources process." The main area of the dialog contains a "Criteria:" label followed by a dropdown menu showing "Total Project". Below this is a "Selection:" label followed by an empty text input field with a small square icon on the right. Underneath is an unchecked checkbox labeled "Include all children". At the bottom of the dialog, there are five buttons: "Help", "<Back", "Next>", "Finish", and "Cancel".

**Figure 20: Criteria Selection Page**

**Classes**  
Please select the classes to Replace Resources.

<input type="checkbox"/>	Name	Description	Class Type
<input checked="" type="checkbox"/>	Actual	Actuals (ACWP)	Actual
<input type="checkbox"/>	Budget	Current Budget (BCWS)	Budget
<input type="checkbox"/>	Earned	Performed (BCWP)	Progress
<input type="checkbox"/>	Forecast	Performance Factor = 1	Forecast
<input type="checkbox"/>	OTB	Over target baseline	Budget
<input type="checkbox"/>	Replanned	Replanned Budget	Budget
<input type="checkbox"/>	ReprogCVA	Reprogramming Cost Varianc	Budget
<input type="checkbox"/>	ReprogSVA	Reprogramming Schedule Va	Budget
<input type="checkbox"/>	Stat Frct	1/CPI Cum to date	Forecast

Buttons: Help, <Back, Next>, Finish, Cancel

**Figure 21: Classes Page**

**Date Range**  
Please select the date range where you want to Replace Resources.

Replace Resources of all periods in your project.

Replace Resources in a specific date range.

From: 12/31/2015

To: 02/28/2020

Buttons: Help, <Back, Next>, Finish, Cancel

**Figure 22: Date Range Page**

**Attention:** For more information on these pages, see the following topics in the Cobra Help System:

- "Options Page of the Replace Resources Wizard"
- "Criteria Selection Page of the Replace Resources Wizard"
- "Classes Page of the Replace Resources Wizard"
- "Date Range Page of the Replace Resources Wizard"

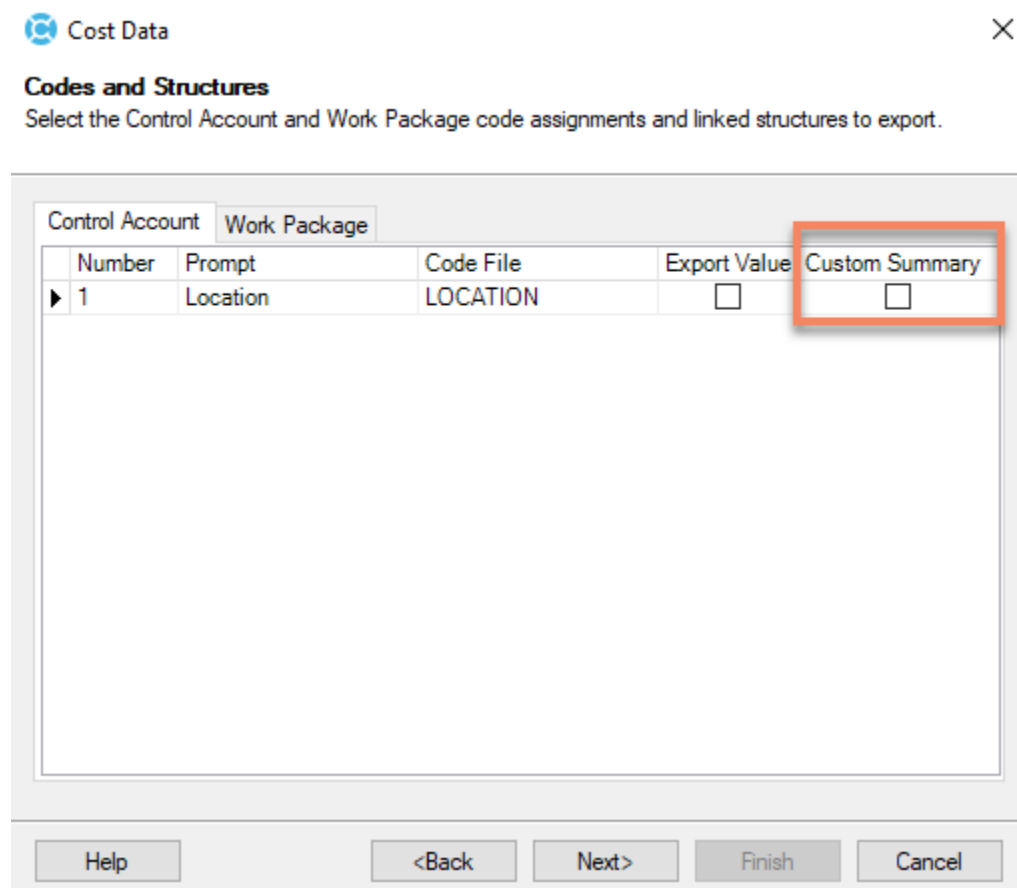
In addition, new settings have been added to extend API support for the Replace Resources process, enhancing its automation capabilities.

**Attention:** For more information on the new settings, see the "Replace Resources Process" topic in the Cobra Help System.

## Custom Summary Performance in IPMDAR Export

The Cost Data Export now lets you specify whether to populate the Custom Summary Performance part of the IPMDAR Cost Performance Dataset (CPD) export, offering greater flexibility and customization.

On the Codes and Structure page of the Cost Data Wizard, a new **Custom Summary** checkbox lets you select which code file to include in the **CustomSummaryPerformance.json** file when generating the IPMDAR format.



**Figure 23: Codes and Structures Page of the Cost Data Wizard**

**Attention:** For more information, see the "Codes and Structures Page of the Cost Data Wizard" topic in the Cobra Help System.

## API Support for the Zero-Out Data Process

The Cobra API now supports the Zero-Out Data process, enabling you to automate the monthly clearing of specific data subsets. This reduces manual effort and streamlines recurring workflows.

**Attention:** For more information about the settings that you can use to run the process through the API, see the "Zero-Out Data Process" topic in the Cobra Help System.

## API and Web Service Support for the Freeze Forecast Process

The Cobra API and Web Service now support the Freeze Forecast process, enabling you to configure project selection, criteria selection, forecast cost set selection, and copy-to-forecast options.

This ensures consistency with existing API and Web Service processes, reduces manual effort, and streamlines month-end reporting workflows.

**Attention:**

- For more information about the settings that you can use to run the process through the API, see the "Freeze Forecast Process" topic in the Cobra Help System.
- The Freeze Forecast method is listed in the "Supported Operations" table of the "Supported Processes, Operations, and Data" topic in the Cobra Help System. To display the Web Service Client API Help, click the following link: [Web Services Client API](#). You can also navigate to the `\Help\API` subfolder of your Cobra installation folder.

## Enhanced Error and Warning Documentation for Integration

The Cobra Help System now includes help topics that provide clearer insights into process logs during the execution of all Integration processes, which include:

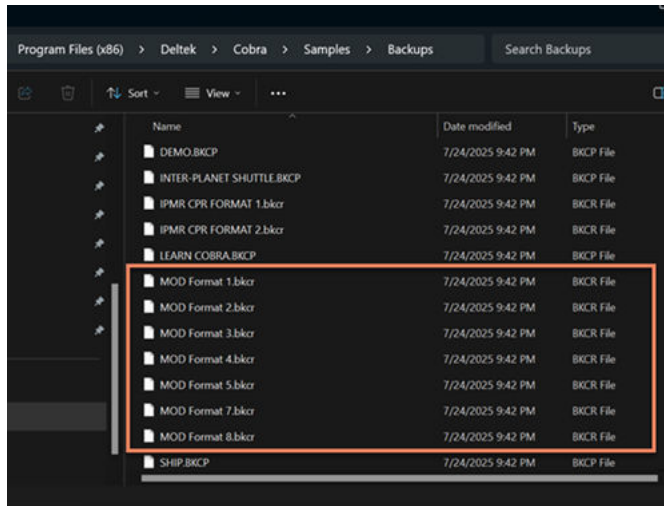
- Actual Cost Integration
- Ancillary Data Integration
- Import File Integration
- Microsoft Project Server Schedule Integration
- Microsoft Project XML Schedule Integration
- Open Plan Schedule Integration
- Primavera Schedule Integration
- Primavera Web Service Schedule Integration

These help topics provide detailed descriptions of errors and warnings, along with their corresponding resolutions.

**Attention:** For more information, see the topics in the "Integration Error Codes and Messages" area under the "Error Codes and Messages" section of the Cobra Help System.

## Support for MOD Reporting

Cobra now installs the UK Ministry of Defense (MOD) report backups in the **Samples\Backups** folder of the installation directory during both new and upgrade installations.



**Figure 24: MOD Reports in Samples\Backups Folder**

In addition, when you uninstall Cobra, the MOD report templates in the **ReportTemplates** folder are automatically removed to support clean system management and ensure compliance with MOD reporting requirements.

## Securing Custom Hooks

You can now secure custom hooks for a specific role in EPM Security Administrator or PPM Administrator (**File » Application Preferences » Custom Hooks**).

You can add, edit, delete, and run a custom hook if you have the necessary rights enabled. Otherwise, you will not be able to execute any of these processes—even if a custom hook was previously defined.

**Attention:** For more information, see the "Custom Hooks" topic in the Cobra Help System.

## Software Issues Resolved

This section includes software issues resolved in this release.

### File » Integration Wizard-Actual Costs

#### Defect 2429905

**Description:** When you ran the Actual Cost-Integration Wizard and the **Auto-create missing Control Account or Work Package** option was selected on the File Selection page, some validation messages were displayed incorrectly on the Field Mapper page.

**Customers Impacted:** This defect affects customers using the Actual Cost-Integration Wizard.

**Workaround Before Fix:** None.

#### Files Updated:

- Cobra.WinUI.\*.dll
- Cobra.WinUI.exe
- Cobra.Model.dll
- Cobra.Model.LoginManager.dll

### Projects » Project View

#### Defect 1102182

**Description:** When you double-clicked a project in the Project view with a project-level code selected in the **View** drop-down list, the project did not display.

**Customers Impacted:** This defect affects all customers.

**Workaround Before Fix:** Right-click the project and select **Open**.

#### Files Updated:

- Cobra.WinUI.\*.dll
- Cobra.WinUI.exe

## Security Enhancements

This release includes security enhancements to address findings from ongoing security monitoring.

# Database Changes

This section includes database changes in this release.

## Tables

This section includes changes to tables.

### New Tables

Table Name
WST_URL_CMD_PARAM
WST_WEBAPI_CMD
WST_DIR_CTRL_COUNTRY

### Modified Tables

Table Name
WST_USR

## Columns

This section includes changes to table columns.

### New Columns

Table Name	Column Name	Data Type
WST_URL_CMD_PARAM	CMD_PARAM_UID	VARCHAR2 (22)
WST_URL_CMD_PARAM	WEBAPI_CMD_UID	VARCHAR2 (22)
WST_URL_CMD_PARAM	PROMPT_TEXT	NVARCHAR2 (50)
WST_URL_CMD_PARAM	REQUIRED	NUMBER (10, 0)
WST_URL_CMD_PARAM	NAME	NVARCHAR2 (60)
WST_URL_CMD_PARAM	DATA_TYPE	VARCHAR2 (4)
WST_URL_CMD_PARAM	PARAM_TYPE	NUMBER (10, 0)
WST_USR	LASTUPDATE_USR_ID	NVARCHAR2 (20)
WST_USR	LASTUPDATE	DATE
WST_WEBAPI_CMD	CMD_UID	VARCHAR2 (22)
WST_WEBAPI_CMD	CUSTOM_MENU_UID	VARCHAR2 (22)
WST_WEBAPI_CMD	DESCRIPTION	NVARCHAR2 (1000)
WST_WEBAPI_CMD	ACCESS_TOKEN_URL	NVARCHAR2 (1000)

Table Name	Column Name	Data Type
WST_WEBAPI_CMD	AUTH_SCOPES	NVARCHAR2 (1000)
WST_WEBAPI_CMD	AUTH_TYPE	NUMBER (10, 0)
WST_WEBAPI_CMD	AUTH_URL	NVARCHAR2 (1000)
WST_WEBAPI_CMD	CALLBACK_URL	NVARCHAR2 (1000)
WST_WEBAPI_CMD	CLIENT_ID	NVARCHAR2 (1000)
WST_WEBAPI_CMD	CLIENT_SECRET	NVARCHAR2 (1000)
WST_WEBAPI_CMD	CMD_URL	NVARCHAR2 (1000)
WST_WEBAPI_CMD	CMD_HTTP_VERB	VARCHAR2(6)
WST_WEBAPI_CMD	BODY_CONTENT_TYPE	NUMBER (10, 0)
WST_WEBAPI_CMD	BODY_TEMPLATE	NVARCHAR2(2000)
WST_DIR_CTRL_COUNTRY	DIR_UID	VARCHAR2(22)
WST_DIR_CTRL_COUNTRY	CTRL_COUNTRY	NVARCHAR2(40)
WST_ULI	LASTPOLL	DATE

#### Changes to Existing Columns

Table Name	Column Name	Data Type
WST_USR	PWD_LASTUPDATE	DATE

#### Indexes

This section includes changes to indexes.

#### New Indexes

Table Name	Index Name	Index Fields
WST_URL_CMD_PARAM	PK_WST_URL_CMD_PARAM	CMD_PARAM_UID
WST_WEBAPI_CMD	PK_WST_WEBAPI_CMD	CMD_UID

#### Objects

There are no changes to functions, stored procedures, views, and objects in this release.

## Data Changes

This section includes changes to the data applied by scripts.

- Added records in WST\_TAB for the following tables:
  - FW\_CFGProcessQueue
  - FW\_CFGProcessQueueSetup
  - WST\_AUDIT\_LOG
  - WST\_CUSTOM\_MENU
  - WST\_FILE
  - WST\_LIC
  - WST\_LICN
  - WST\_LTYP
  - WST\_MSG
  - WST\_PFA
  - WST\_PFD
  - WST\_PFG
  - WST\_PRD
  - WST\_PROCESSLOG
  - WST\_PSO
  - WST\_UPD
  - WST\_UPF
  - WST\_URL\_CMD\_PARAM
  - WST\_WEBAPI\_CMD
- Added records in WST\_DCT for the following tables:
  - FW\_CFGProcessQueue
  - FW\_CFGProcessQueueSetup
  - WST\_AUDIT\_LOG
  - WST\_CDR
  - WST\_CUSTOM\_MENU
  - WST\_FILE
  - WST\_LCK
  - WST\_LIC
  - WST\_LICN

- WST\_LTYP
- WST\_MESSAGE\_QUEUE
- WST\_MSG
- WST\_NTX
- WST\_PFA
- WST\_PFD
- WST\_PFG
- WST\_PRD
- WST\_PROCESSLOG
- WST\_PSO
- WST\_UDT
- WST\_UPD
- WST\_UPF
- WST\_URL\_CMD\_PARAM
- WST\_USR
- WST\_UTX
- WST\_WEBAPI\_CMD
- Updated records in WST\_DCT for the following columns:
  - WST\_ACL.GRP\_ID
  - WST\_ACL.ROL\_ID
  - WST\_ACL.USR\_ID
  - WST\_CDR.LASTUPDATE
  - WST\_CFG.LASTUPDATE
  - WST\_CFG.OWNER\_ID
  - WST\_DIR.LASTUPDATE
  - WST\_DIR.OWNER\_ID
  - WST\_GRP.MANAGER
  - WST\_GRP.ROL\_ID
  - WST\_LCK.LASTUPDATE
  - WST\_LCK.USR\_ID
  - WST\_ROL.MANAGER
  - WST\_ULI.LOGINTIME
  - WST\_ULI.USR\_ID

- WST\_UPA.USR\_ID
- WST\_USG.GRP\_ID
- WST\_USG.USR\_ID
- WST\_USR.ALTMANAGER
- WST\_USR.DELEGATE
- WST\_USR.MANAGER
- WST\_USR.PWD\_LASTUPDATE
- WST\_USR.ROL\_ID
- WST\_USR\_CTRL\_COUNTRY.USR\_ID
- WST\_UDT.FIELD\_VALUE
- Removed WST\_DCT records from the following tables:
  - WST\_AUDIT\_LOG
  - WST\_CDR
  - WST\_CUSTOM\_MENU
  - WST\_FILE
  - WST\_LIC
  - WST\_LICN
  - WST\_LTYP
  - WST\_MESSAGE\_QUEUE
  - WST\_MSG
  - WST\_PFA
  - WST\_PFD
  - WST\_PFG
  - WST\_PRD
  - WST\_PROCESSLOG
  - WST\_PSO
  - WST\_ULI
  - WST\_UPF
  - WST\_URL\_CMD\_PARAM
  - WST\_USG
  - WST\_USR
  - WST\_UDT
  - WST\_UDU

- WST\_UNM
- WST\_NTX
- WST\_UPD
- Updated the PPM\_ADMIN\_COMPAT\_VER value for the WST\_PRD record for Cobra.
- Added records in the WST\_LICN table.
- Updated records in the WST\_UPA table.

## Appendix A: For Additional Information

This section contains information on the Deltek Support Center and the available documentation for this release.

### Deltek Support Center

The Deltek Support Center is a support website for Deltek customers who purchase an Ongoing Support Plan (OSP).

The following are some of the many options that the Deltek Support Center provides:

- Search for product documentation, such as release notes, install guides, technical information, online help topics, and white papers
- Ask questions, exchange ideas, and share knowledge with other Deltek customers through the Deltek Support Center Community
- Access Cloud-specific documents and forums
- Download the latest versions of your Deltek products
- Search Deltek's knowledge base
- Submit a support case and check on its progress
- Transfer requested files to a Deltek Support Services analyst
- Subscribe to Deltek communications about your products and services
- Receive alerts of new Deltek releases and hot fixes
- Initiate a Chat to submit a question to a Deltek Support Services analyst online

**Attention:** For more information regarding Deltek Support Center, refer to the online help available from the website.

### Access Deltek Support Center

To access the Deltek Support Center:

1. Go to <https://deltek.custhelp.com>.
2. Enter your Deltek Support Center **Username** and **Password**.
3. Click **Login**.

**Note:** If you forget your username or password, you can click the **Need Help?** button on the login screen for help.

### Available Documentation for this Release

The following table lists the Deltek documentation available for this release. Except where noted, all the user guides and quick reference guides listed in this table are available for download from the Deltek Support Center.

Document Name	Description
<i>Deltek Cobra 8.7 Installation Guide</i>	The Installation Guide provides step-by-step procedures on how to install the application. It also provides information about the software and hardware requirements of the product.
Deltek Cobra 8.7 Help System	The Deltek Cobra Help system provides administrators and users with screen/field-level documentation for all applications and functions in the current release.  You can access the Help system from the Cobra application.
Deltek EPM Security Administrator Help System	The Help system for the EPM Security Administrator provides administrators with screen/field-level documentation for all of the security features of Cobra.  You can access the Help system from the EPM Security Administrator application.
<i>Deltek Cobra 8.7 Technical Overview and System Requirements</i>	The Technical Overview and System Requirements document serves as a guideline for hardware and software requirements and provides your firm's IT department with information about the technical deployment architecture of Cobra.
Deltek Cobra 8.7 Data Tool Help System	The Cobra Data Tool Help system provides help for all areas of the Cobra Data Tool application.
<i>Deltek Cobra 8.7 Data Structure</i>	This document provides you with the updated version of all Cobra tables as well as the WST tables used by several applications, such as Open Plan and Cobra.
<i>Deltek Cobra 8.7 Essentials</i>	The intent of this guide is to help you become familiar with Cobra's basic capabilities.
<i>Deltek Cobra Database Size Estimators</i>	This spreadsheet can be used to estimate the database size required to support your use of Cobra.