

# Deltek Touch for Maconomy

## Touch 2.1 Multitenancy Setup Guide

**March 2017**

While Deltek has attempted to verify that the information in this document is accurate and complete, some typographical or technical errors may exist. The recipient of this document is solely responsible for all decisions relating to or use of the information provided herein.

The information contained in this publication is effective as of the publication date below and is subject to change without notice.

This publication contains proprietary information that is protected by copyright. All rights are reserved. No part of this document may be reproduced or transmitted in any form or by any means, electronic or mechanical, or translated into another language, without the prior written consent of Deltek, Inc.

This edition published March 2017.

© Deltek, Inc.

Deltek's software is also protected by copyright law and constitutes valuable confidential and proprietary information of Deltek, Inc. and its licensors. The Deltek software, and all related documentation, is provided for use only in accordance with the terms of the license agreement. Unauthorized reproduction or distribution of the program or any portion thereof could result in severe civil or criminal penalties.

All trademarks are the property of their respective owners.

# Contents

Overview ..... 1

Enable Multitenancy Setup ..... 2

    Set Up the Proxy Server ..... 2

    Set Up the configuration.ini File ..... 5

    Creating File Name for the configuration.ini..... 8

Appendix A: Supported Deployment Scenario ..... 10

Appendix B: If You Need Assistance ..... 11

    Customer Services ..... 11

    Customer Care Connect Site ..... 11

    Additional Documentation ..... 12

## Overview

This document provides instructions on how to set up multitenancy in Deltek Touch for Maconomy. This release, however, only supports Internet Information Services (IIS) for multitenancy.



The official name of the application is *Deltek Touch for Maconomy*. This document only uses it at first mention. The succeeding instances of the application name display *Deltek Touch*.

In addition, the application name in *Apple App Store*, *Google Play*, and *Windows Store* displays *Deltek Touch for Maconomy*.

Before you install Deltek Touch, install the following prerequisite software:

Software Name	Suggested Installation Link
Microsoft IIS URL Rewrite 2.0	<a href="http://www.iis.net/downloads/microsoft/url-rewrite">http://www.iis.net/downloads/microsoft/url-rewrite</a>
Microsoft IIS Application Request Routing	<a href="http://www.iis.net/downloads/microsoft/application-request-routing">http://www.iis.net/downloads/microsoft/application-request-routing</a>



Make sure you understand the role of new parameters introduced in the *configuration.ini* file of Deltek Touch. For more information, see the *configuration.ini* of the Deltek Touch for Maconomy Technical Installation Guide.

# Enable Multitenancy Setup

This section describes the instructions in enabling multitenancy using the IIS manager. The major steps are as follows:

1. Install Deltek Touch for Maconomy.
2. Web services are all available and accessible by Deltek Touch.
3. Make sure that you have all the required connection details to the Web services (for example, database name of the REST, and IP Address of the REST API for containers and filedrop).
4. Set up the proxy server.
5. Set up the configuration.ini file.
6. Set up the core configuration.ini file.
7. Set up the tenant configuration.ini file.
8. Perform the file naming for the configuration.ini file.

## Set Up the Proxy Server

**To set up the proxy server, complete the following steps:**

Before you set up the proxy server in IIS, you need to install the Microsoft IIS URL Rewrite 2.0.

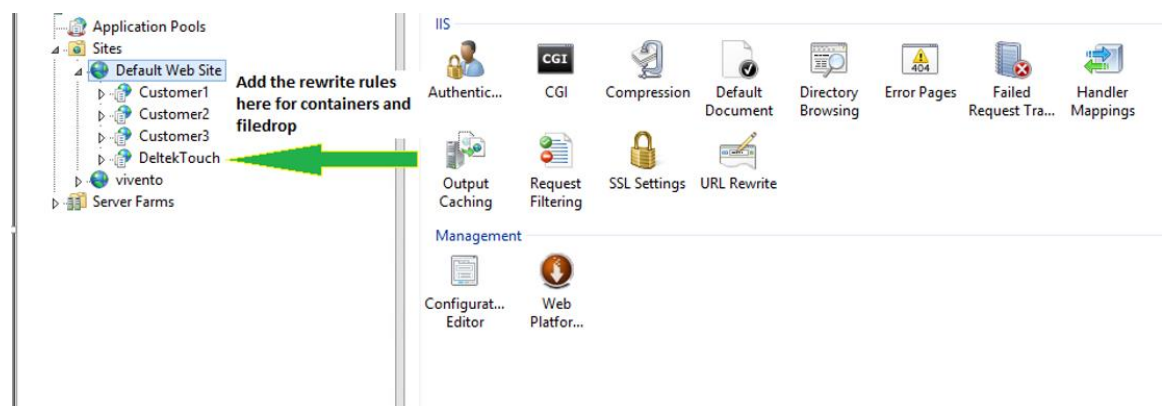


For more information, see <http://www.iis.net/downloads/microsoft/url-rewrite>.

**To perform the proxy server setup, complete the following steps:**

1. Add the rewrite rules for the proxy in the IIS manager. First click the website where you want to define the rewrite rules.

Deltek recommends that rules must be added to the local site (for example, DeltekTouch) not to the root site (for example, Default Web Site).



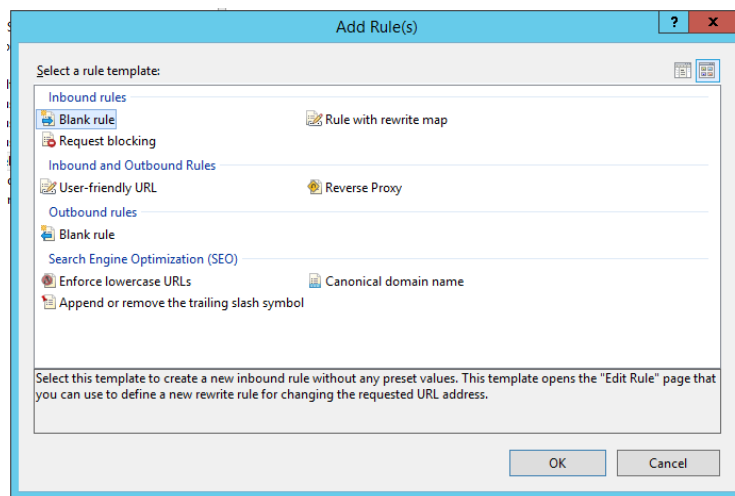
2. Click the **URL Rewrite** applet.

3. Add the rules for “containers” REST API for a specific client. For more information, see the Add Rules to “containers” REST API section.
4. Add the rules for “filedrop” REST API for a specific client. For more information, see the Add Rules to Filedrop API section.
5. Restart the IIS Manager.


## Add Rules to the “containers” REST API

To add the rules to container API, complete the following steps:

1. Open the **URL Rewrite** applet.
2. In the Actions pane, click **Add Rule(s)**.
3. On the Add Rule(s) dialog box, select the **Blank Rule** option in the **Inbound rules** section.



4. Click **OK**.
5. On the Edit Inbound Rules window, enter or select the appropriate values:

 Edit Inbound Rule

---

Match URL

Requested URL:  
Matches the Pattern

Using:  
Wildcards

Pattern:  
customer1/containers/\*

☒ Ignore case

Test pattern...

Conditions

Server Variables

Action

Action type:  
Rewrite

Action Properties

Rewrite URL:  
http://10.1.1.111:1111/containers/{R:1}

☒ Append query string

☐ Log rewritten URL

☐ Stop processing of subsequent rules

- **Name** – Set the rule name (for example, Customer1Containers).
  - **Requested URL** – Select the **Matches the Pattern** option.
  - **Using** – Select the **Wildcards** option.
  - **Pattern** – Enter the pattern, **tenant}/containers/\*** (e.g. /customer1/containers/\*)
  - **Ignore case** – Select this option.
  - **Conditions** – *Do not change anything.*
  - **Server Variables** – *Do not change anything.*
  - **Action**
    - **Action type** – Select the **Rewrite** option.
    - **Action Properties**
      - **Rewrite URL** – Enter the URL for the RESTful API, for example, <http://10.1.1.111:1111/containers/{R:1}>.
      - **Append query string** – Select this option.
      - **Log rewritten URL** – Do not select this option.
    - **Stop processing of subsequent rules** – Do not select this option.
6. On the right pane, click **Apply**.

## Add Rules to the Filedrop API

To add the rules to the filedrop API, complete the following steps:

1. Open the **URL Rewrite** applet.
2. In the Actions pane, click **Add Rule(s)**.
3. On the Add Rule(s) dialog box, select the **Blank Rule** option in the **Inbound rules** section.
4. Click **OK**.
5. On the Edit Inbound Rules window, enter or select the appropriate values:
  - **Name** – Set the rule name (for example, Customer1Filedrop).
  - **Requested URL** – Select the **Matches the Pattern** option.
  - **Using** – Select the **Wildcards** option.
  - **Pattern** – Enter the pattern, **{tenant}/filedrop/\*** (for example, /customer1/filedrop/\*).
  - **Ignore case** – Select this option.
  - **Conditions** – *Do not change anything.*
  - **Server Variables** – *Do not change anything.*
  - **Action**
    - **Action type** – Select the **Rewrite** option.
    - **Action Properties**
      - **Rewrite URL** – Enter the URL for the RESTful API, for example, <http://10.1.1.111:1111/filedrop/{R:1}>.
      - **Append query string** – Select this option.
      - **Log rewritten URL** – Do not select this option.
    - **Stop processing of subsequent rules** – Do not select this option.
6. On the right pane, click **Apply**.

## Set Up the configuration.ini File

There are two types of configuration.ini file needed when setting up the multitenancy for Deltek Touch: one “core” configuration.ini and individual tenant’s configuration.ini (which resides in the configuration folder of the Touch Server).

### Core configuration.ini

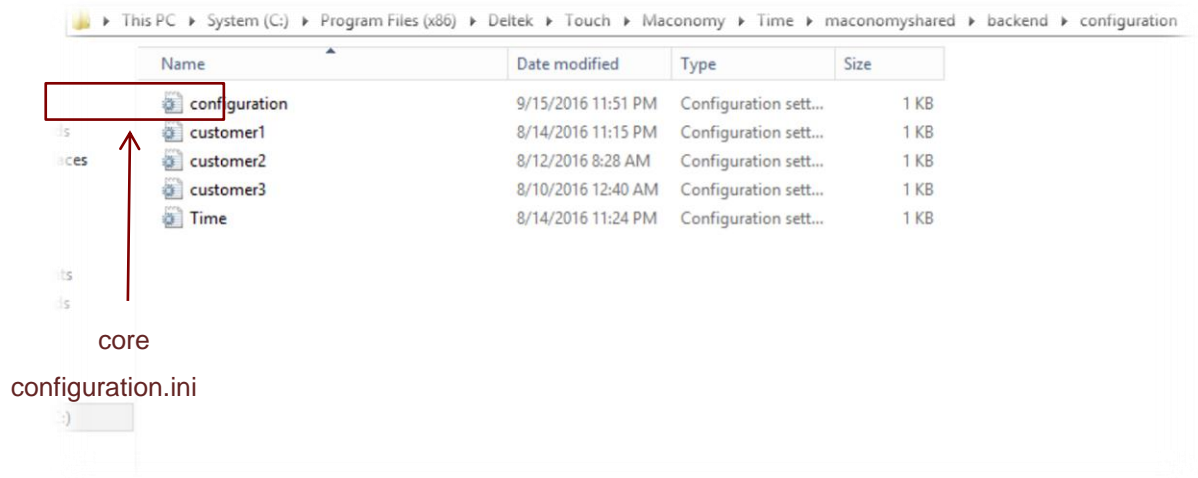
The core configuration.ini file does not contain the connection details of the Web services users need. It only contains the information whether this is a multitenant environment. For more information, see the Appendix section of this document.

In the Touch client-side application, setting the value of the **Server URL** field and tapping **Connect** instructs Deltek Touch to connect to the Touch Server. When the Touch Server receives the request from Deltek Touch, it performs the following actions:

- Retrieves the configuration.ini file by calling certain methods in the “RemoteCall.php.”
- Checks the parameter “DYNAMICSCRIPT.” If it is set to true, multitenancy is enabled.



- If the parameter “DYNAMICSCRIPT” is true, the “RemoteCall.php” analyzes the value entered in the **Server URL** field whether the user is connecting via native application or the “URL” or connecting via browser. The tenant code extracted by the “RemoteCall.php” is dependent on the URL. For example, in the URL <http://clientsite.com/customer1>, the Touch Server looks for customer1.ini (which contains the connection details for the Web service) in the Touch Server.



### Sample Content of the Core configuration.ini File

```
. *****
;
; Maconomy Touch Configuration File
. *****
;

[SERVER_DATA]
DYNAMICSCRIPT="TRUE"
TOUCHSERVER="2.0.0.0"
HELPODOCURL="http://clientsite.com/deltektouchdownloads/docs/DeltekMaconomyTouchTimeUserGuide.pdf"

[REST_PROXY_DATA]
REST_HTTP_PROTOCOL=""
REST_DOMAIN_NAME=""
REST_HTTP_PORT=""
REST_PROXYPASS_CLIENT_CODE=""
REST_CONTAINER_NAME=""
REST_FILEDROP_NAME=""
REST_VERSION=""
REST_DATABASE=""
REST_LANGUAGE=""
REST_IIS_TOUCH_FOLDER_NAME=""
```

**REST\_AUTHENTICATION\_TYPE=""**

**[REST\_MODULE\_SETUP]**

**USERESTFORTIME="false"**

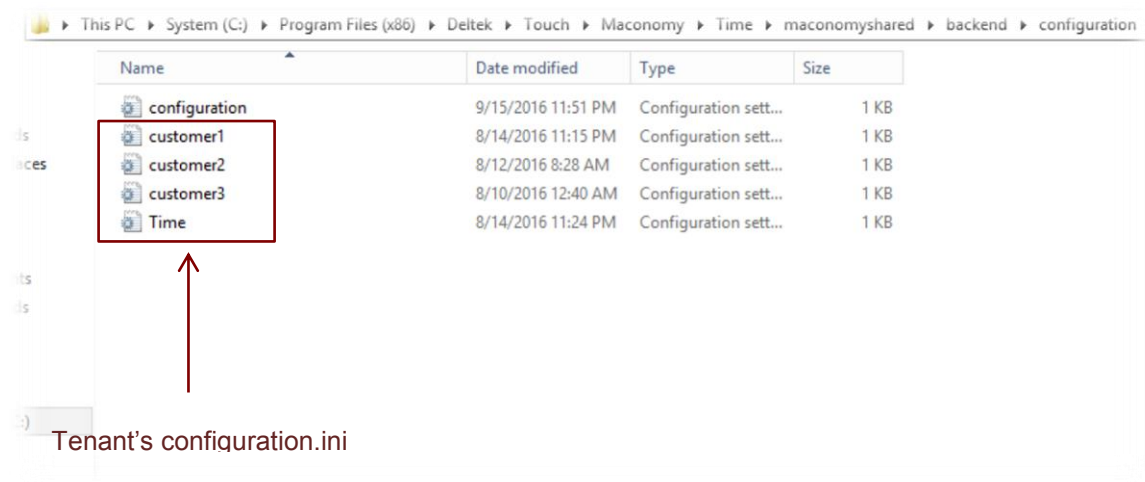
**USERESTFOREXPENSE="false"**

**USERESTFORAPPROVALS="false"**

## Tenant configuration.ini

After setting up the core configuration.ini file, create each specific tenants configuration.ini. The tenant configuration.ini contains the connection details about the Web service that Touch client-side application needs.

The tenant configuration.ini resides in the configuration folder of the Touch server along with the core configuration.ini.



## Sample Content of the Tenant configuration.ini File

```
. *****
;
; Maconomy Touch Configuration File
. *****
;

[SERVER_DATA]

URL="http://10.1.1.1:1111/cgi-
bin/Maconomy/MaconomyTouch.x1demo.en_US_CPA.exe/Standard/DelteKTouchWS.ms"

CHARSET='UTF-8'

DYNAMICSCRIPT='false'

DEBUGGERFL="false"

TOUCHSERVER="2.0.0.0"

HELPOURL =
'http://clientsite.com/deltektouchdownloads/docs/DelteKMaconomyTouchTimeUserGuide.pdf'
```

**CLIENTURL**='https://clientsite.com/224SSO'

[REST\_PROXY\_DATA]

**REST\_HTTP\_PROTOCOL**="https"

**REST\_DOMAIN\_NAME**="clientdomain.com "

**REST\_HTTP\_PORT**=""

**REST\_PROXYPASS\_CLIENT\_CODE**="224SSO"

**REST\_CONTAINER\_NAME**="containers"

**REST\_FILEDROP\_NAME**="filedrop"

**REST\_VERSION**="v1"

**REST\_DATABASE**="x1db"

**REST\_LANGUAGE**="en-US-CPA"

**REST\_IIS\_TOUCH\_FOLDER\_NAME**="MacTouchMulti"

**REST\_AUTHENTICATION\_TYPE**="BASICAUTH"

[REST\_MODULE\_SETUP]

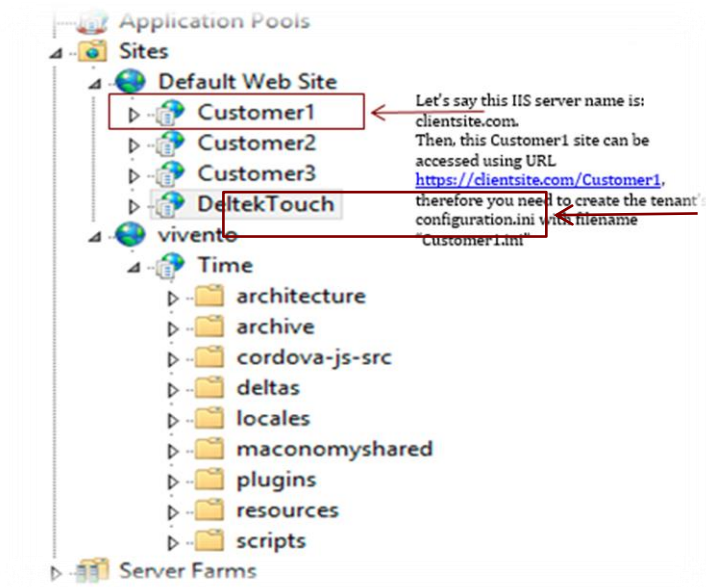
**USERESTFORTIME**="true"

**USERESTFOREXPENSE**="true"

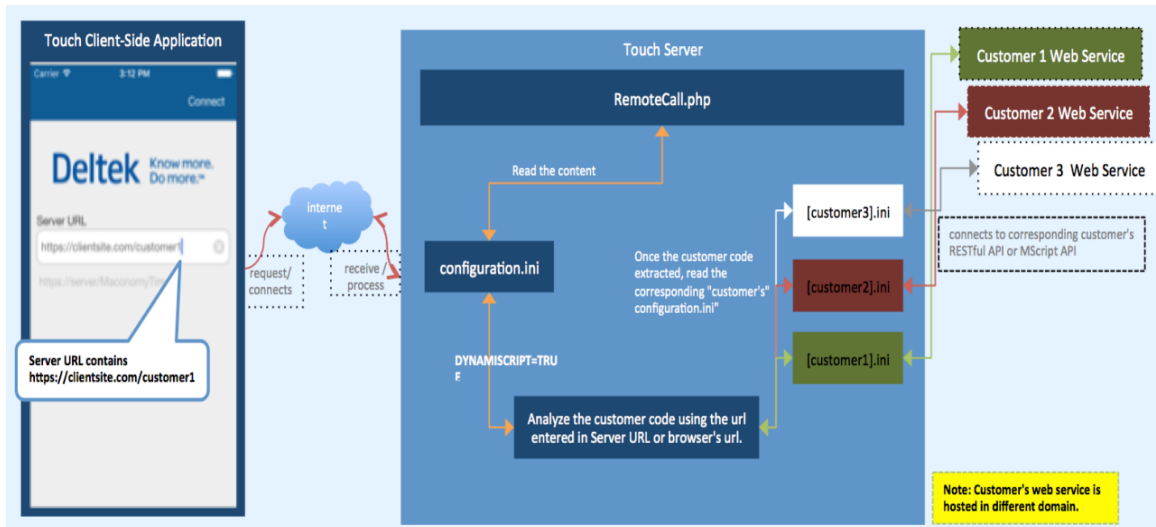
**USERESTFORAPPROVALS**="false"

## Creating File Name for the configuration.ini

- The file name for the core configuration.ini is always “configuration.ini” and resides in the configuration folder (for example, /time/maconomyshared/backend/configuration).
- The file name for the tenant configuration.ini is always dependent on the Web site name. For example, the “customer 1” Web site name is “Customer1” and the Web site setup for this customer1 can be accessed using the URL <http://samplesite.com/Customer1>. This means you need to create the tenant’s configuration.ini with file name of “Customer1.ini”



## Appendix A: Supported Deployment Scenario



## Appendix B: If You Need Assistance

If you need assistance installing, implementing, or using Deltek Touch for Maconomy, Deltek makes a wealth of information and expertise readily available to you.

### Customer Services

For over 30 years, Deltek has maintained close relationships with client firms, helping with their problems, listening to their needs, and getting to know their individual business environments. A full range of customer services has grown out of this close contact, including the following:

- Extensive self-support options through the Customer Care Connect Web portal.
- Phone and email support from Customer Care analysts
- Technical services
- Consulting services
- Custom programming
- Classroom, on-site, and Web-based training



Find out more about these and other services from the Customer Care Connect site.

### Customer Care Connect Site

The Deltek Customer Care Connect site is a support Web site for Deltek customers who purchase an Ongoing Support Plan (OSP).

The following are some of the many options that the Customer Care Connect site provides:

- Search for product documentation, such as release notes, install guides, technical information, online help topics, and white papers
- Ask questions, exchange ideas, and share knowledge with other Deltek customers through the Deltek Connect Customer Forums
- Access Cloud specific documents and forums
- Download the latest versions of your Deltek products
- Search Deltek's knowledge base
- Submit a support case and check on its progress
- Transfer requested files to a Customer Care analyst
- Subscribe to Deltek communications about your products and services
- Receive alerts of new Deltek releases and hot fixes
- Use Quick Chat to submit a question to a Customer Care analyst online



For more information regarding Deltek Customer Care Connect, refer to the online help available from the Web site.

## Access Customer Care Connect

To access the Customer Care Connect site, complete the following steps:

1. Go to <http://support.deltek.com>.
2. Enter your Customer Care Connect **Username** and **Password**.
3. Click **Log In**.



If you do not have a username and password for the Customer Care Connect site, contact your firm's Deltek Touch for Maconomy technical consultant.

If you forget your username or password, you can click the **Account Assistance** button on the login screen for help.

## Additional Documentation

The following table lists the additional Deltek documentation available for this release. Except where noted, all the user guides and quick reference guides listed in this table are available for download from the Deltek Customer Care Connect site.

Document Name	Description
Deltek Touch for Maconomy User Guide	This document contains detailed information and instructions on how to use various features of the application.
Deltek Touch for Maconomy Release Notes	This document contains a summary of the technical considerations, major features, and known issues of the application.
Deltek Touch for Maconomy Upgrade Guide	<i>This document is only intended for Technical Consultants.</i> It describes necessary steps to upgrade to the latest Touch system.
Deltek FPU Release Notes for Maconomy Touch	<i>These documents are only intended for Technical Consultants.</i>  The document names vary depending on the supported Maconomy version. Each document contains a summary of the pre-installation information, enhancements, and API changes to Touch for each supported Maconomy version. It is part of the Deltek Touch for Maconomy 1.4 product information suite and should only distributed internally within the Maconomy organization and to partners.
Deltek Touch for Maconomy Layout Customization Guide	<i>This document is only intended for Technical Consultants.</i> It describes tasks necessary for the customization of layouts of the Deltek Touch for Maconomy application.

Document Name	Description
Deltek Touch for Maconomy MScript and REST Web Services Comparison Guide	This document describes the differences between MScript and Representational State Transfer (REST) Web services to help technical consultants prepare for implementing Deltek Touch for new users or migrate their current Touch installation to REST.





Deltek is the leading global provider of enterprise software and information solutions for government contractors, professional services firms and other project- and people-based businesses. For decades, we have delivered actionable insight that empowers our customers to unlock their business potential. 20,000 organizations and millions of users in over 80 countries around the world rely on Deltek to research and identify opportunities, win new business, recruit and develop talent, optimize resources, streamline operations and deliver more profitable projects. Deltek – Know more. Do more.®

[deltek.com](http://deltek.com)