




Deltek

Deltek Costpoint® 7.1

Maintenance Release Installation Guide

September 28, 2021



While Deltek has attempted to verify that the information in this document is accurate and complete, some typographical or technical errors may exist. The recipient of this document is solely responsible for all decisions relating to or use of the information provided herein.

The information contained in this publication is effective as of the publication date below and is subject to change without notice.

This publication contains proprietary information that is protected by copyright. All rights are reserved. No part of this document may be reproduced or transmitted in any form or by any means, electronic or mechanical, or translated into another language, without the prior written consent of Deltek, Inc.

This edition published September 2021.

© Deltek, Inc.

Deltek's software is also protected by copyright law and constitutes valuable confidential and proprietary information of Deltek, Inc. and its licensors. The Deltek software, and all related documentation, is provided for use only in accordance with the terms of the license agreement. Unauthorized reproduction or distribution of the program or any portion thereof could result in severe civil or criminal penalties.

All trademarks are the property of their respective owners.

Contents

Installation Overview	1
Installation Package Contents	1
Installation Prerequisites	1
Internet Information	2
Deltek Software Manager Requirements	2
Pre-Installation Instructions	3
Notify All Users	3
Back Up Database Schemas	3
Maintenance Release Installation	4
Stop Costpoint 7.1.x WebLogic Server	4
Install Maintenance Release Software	4
Re-Configure Costpoint 7.1 InstallCPWeb Service CMDs	8
Re-Install Costpoint 7.1 Windows Service	9
Re-Configure and Start Costpoint 7.1 Windows Service	9
Update Costpoint Web Services (PMFG SFT/MES Clients)	10
Post-Installation	13
MR Installer Log Files	13
MR Installer Silent Install Parameters	17
Troubleshooting Instructions	20
Costpoint 7.1 Windows Service Will Not Start	20
CPWeb DEWebApp Copy FAILED: Cannot Create a File When that File Already Exists	20
Latest Installer Files Download Instructions	20

Installation Overview

This document provides instructions for installing the Deltek Costpoint 7.1 Maintenance Release software. During this install, you will perform the following:

- Backup all schemas.
 - Costpoint Admin
 - Costpoint System
 - Costpoint Transaction
 - Time & Expense (if applicable)
 - Budgeting & Planning (if applicable)
- Stop Costpoint 7.1.x Windows Service.
- Run the MR Installer on your Primary application server
 - Apply latest JDK.
 - Apply latest WebLogic Security Patches.
 - Apply Costpoint Application Classes.
 - Apply Costpoint Web Tier files.
 - Apply Costpoint Help Files.
 - Apply Patches, Dynamic Data, and Stored Procedures.
 - Apply System Metadata.
 - Run Link Views and Rebuild User Menus.
- Run the MR Installer on any additional WebLogic nodes
 - Apply latest JDK.
 - Apply latest WebLogic Security Patches.
- Reconfigure any non-standard InstallCPWeb Service CMDs.
- Reconfigure and Start Costpoint 7.1 Windows Service(s).
- Update Costpoint Web Services (PMFG SFT/MES clients only).

Note: If you need help with this installation, please contact Costpoint Technical Support at 877.HLP.PROJ (877-457-7765).

Installation Package Contents

The Costpoint 7.1.x installation package contains the following:

- Costpoint 7.1.x Maintenance Release installer
- Deltek Costpoint 7.1 Maintenance Release Installation Guide

Installation Prerequisites

The following prerequisites must be met before installing Costpoint 7.1.x:

- Your Costpoint databases must be at version 7.1.1 (GA) or later.
- Your Time & Expense databases must be at version 10.0 (GA) or later (if applicable).
- Your Budgeting & Planning databases must be at version 7.0 (GA) or later (if applicable).
- You must have Administrative access to your Costpoint 7.1.x Transaction, System, and Admin databases.
- You must have Administrative access to your Time & Expense 10.0 and Budgeting & Planning 7.0 Transaction databases (if applicable).

Internet Information

Software installations, installation instructions, technical guides, and release notes are available for download from the Deltek Software Manager (DSM). All future releases of Costpoint 7.1 are also downloaded from DSM.

DSM is the sole download source for hotfix files.

Deltek Software Manager Requirements

You can run DSM from any desktop. It does not need run from Deltek application servers.

In order to run DSM, you must meet the following requirements:

- Windows XP or later
- Microsoft .NET Framework 3.5 SP1 (3.5.1)

The following Deltek Knowledge Base article contains a download link to the framework. It also has examples of what you may see if you do not have the framework installed:

https://deltek.custhelp.com/app/answers/detail/a_id/52469

Tip: Refer to the [DeltekSoftwareManager.pdf](#) to learn more about DSM and how it works.

DSM Documentation and Troubleshooting

- To view the online help for Deltek Software Manager, click [here](#).
- To view a tutorial on how to use Deltek Software Manager, click [here](#).
- To view more information on troubleshooting Deltek Software Manager, click [here](#).

Note: The above troubleshooting link will only work if you are logged into Deltek Customer Care Connect.

Pre-Installation Instructions

This section provides instructions to prepare your Costpoint 7.1.x system for installation of the Costpoint 7.1 Maintenance Release.

Warning: Please ensure that you perform the steps in this section before performing any test upgrade and again before you upgrade your production environment. Changes made to your production environment after you have upgraded your test copy could provide different results.

Notify All Users

It is important that you coordinate the timing for the installation with all users. Users must not access Costpoint, Time & Expense, or Budgeting & Planning during the Maintenance Release installation.

Back Up Database Schemas

Deltek strongly recommends that you make a backup of your existing Costpoint 7.1.x database before you install the latest Costpoint 7.1 Maintenance Release. You need to make a backup of the Transaction, Admin, and System schemas as well as your Time & Expense 10.0 and/or Budgeting & Planning 7.0 Transaction schemas if applicable.

You can use your own preferred way to create a backup of these databases or employ the Oracle datapump export utility.

Note: Deltek strongly recommends that you regularly test and verify your database backups.

Maintenance Release Installation

This section provides instructions and recommendations for installing the Deltek Costpoint 7.1 Maintenance Release.

Note: If you use a clustered environment, you must **repeat** all the steps in this section for **each** of your Costpoint 7.1.1 Weblogic Application node services.

Stop Costpoint 7.1.x WebLogic Server

This step provides instructions for stopping your Costpoint 7.1.x WebLogic Server.

You must perform this step on your Costpoint 7.1.x WebLogic **application** server and **any WebLogic server nodes**.

To stop your Costpoint 7.1 (or 7.1.1) WebLogic Server(s):

1. Click **Start » Administrative Tools » Services**.
2. On the Services window, scroll down the **Services** list and **Stop** the **Costpoint 7.1 (or 7.1.1)** service.
3. Close the Services window.

Install Maintenance Release Software

The steps to install the Costpoint 7.1.x Maintenance Release software are detailed in this section.

You must perform this step on your application server.

You must have Internet access on the machine where the Costpoint 7.1 MR installer is invoked in order to download the latest DeltekCostpointRequirementsINI.exe file automatically.

The DeltekCostpointRequirementsINI.exe contains the latest OS platforms and database versions supported. This file is automatically downloaded when you launch the MR installation, assuming that your application server has Internet access.

Note: The Deltek MR installer contains functionality that enables it to dynamically download a configuration file from the Deltek Software Manager server when the MR installer executes. This connection requires communication over HTTPS.

If your application server does not have Internet access, you must perform the steps in the [Latest Installer Files Download Instructions](#) section of this document before you run the DeltekCostpointMaintenanceRelease_7.1.x.nnnn.exe.

To install the software:

1. Run the **DeltekCostpointMaintenanceRelease_7.1.x.nnnn.exe** file to launch the Costpoint 7.1 Maintenance Release installation program. The Welcome to the InstallShield Wizard for Costpoint Maintenance Release screen displays.

Note: Due to enhanced security in Microsoft Windows Server, it is advised that you use the **Run as Administrator** option when launching installation files, even if you are logged in as a user with local administrative rights. To **Run as Administrator**, right-click the `DeltekCostpointMaintenanceRelease_7.1.x.nnnn.exe` file in Windows Explorer and select **Run as Administrator**.

2. Click **Next >**.
3. On the Costpoint 7.1.1 Installation Directory screen, accept the default location (the installer reads `toolconnection.properties`) of your Costpoint 7.1.x installation location, or click **Change...** to navigate to the proper location, and click **Next >**.
4. On the Costpoint Tier Type screen, complete the following fields, and click **Next >**.

Field Name	Action
Primary (Updates Costpoint and WebLogic)	<p>Select this setup type to install both the Oracle WebLogic and Deltek Costpoint software.</p> <p>This option must be selected if installing Costpoint in a non-clustered environment or if this is your Primary Application Server Tier in a clustered environment.</p> <p>Additional changes are required to configure a clustered environment.</p>
Secondary (Updates WebLogic only)	<p>Select this setup type to install only the Oracle WebLogic software. The Deltek Costpoint software will not be installed.</p> <p>This option must only be selected for each of your additional WebLogic nodes in a clustered environment after your Primary Application Server Tier has already been updated.</p>

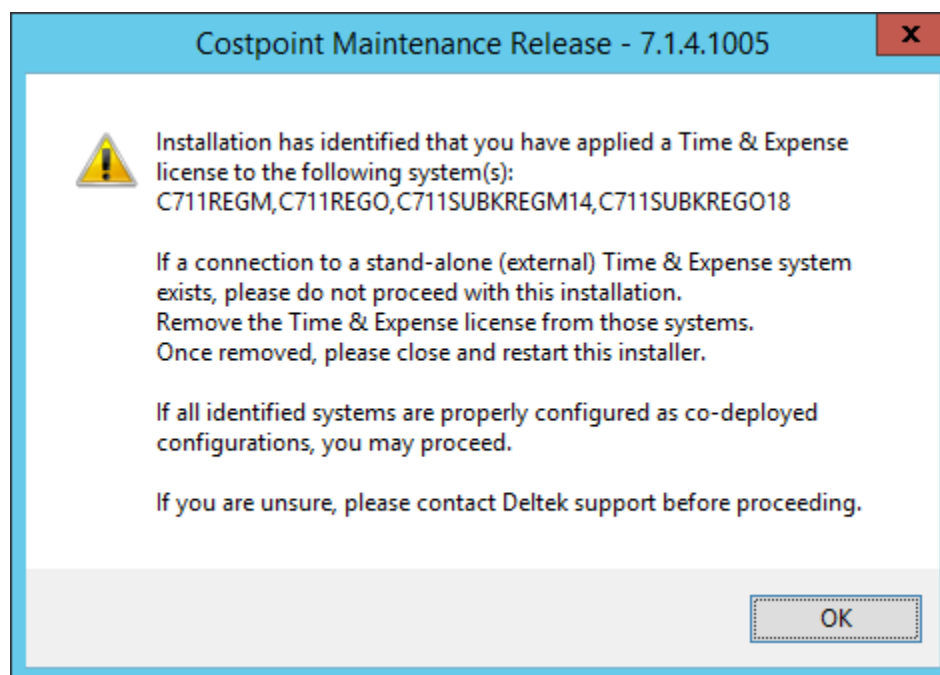
5. On the Features screen, complete the following fields, and click **Next >**.

Deltek recommends that all of these are selected when installing the maintenance release.

Field Name	Action
JDK	Select this feature to install the latest JDK patch.
WebLogic Stack Patch Bundle	Select this feature to install the latest WebLogic security patches and updates.
Costpoint Application Classes	Select this feature to install the Costpoint application classes.
Costpoint Web Tier	Select this feature to install Costpoint Web Tier files.
Help Files	Select this feature to install the help files.

Field Name	Action
Patches, Dynamic Data, Stored Procedures	Select this feature to install the database patches, dynamic data, and stored procedures.
System Metadata	Select this feature to install the system metadata.
Link Views (Rebuild User Menus included)	Select this feature to run link views and rebuild user menus.

- If **Help Files** was a selected Feature and you are currently using local help files, you will be prompted with an option to switch to using Online Help Files. Click **Yes** to update Costpoint to use Online Help Files; click **No** to continue using Local Help Files.
- On the Costpoint System Name(s) screen, select all of the Costpoint Systems you want to update and click **Next >**. By default, all Systems will be selected.
- The following message may display:



The MR installer reads through all Costpoint systems selected. If a Time & Expense segment is found, it will search for the presence of a Time & Expense license in that Costpoint system. It will provide a listing of all such systems found, prompting you to review the list and remove (using DBWizard, Remove License) any TE license from the Costpoint system where the connected TE segment is for a stand-alone, external connection that should not have had a Time & Expense license applied to it.

Any external Time & Expense segments where a Time & Expense license was not present, or where the Time & Expense segment is for a Time & Expense 901 system, will not have the MR Time & Expense patches, SPs, or Data Dictionary files applied to it.

If all systems listed are properly licensed for Time & Expense and you want the MR applied to them, please proceed. If you are unsure, please contact Deltek Technical support.

9. On the Logon screen, for each unique database server instance/host, complete the following fields and click **Next >**.

Field Name	Action
User Name	Enter the Oracle SYSTEM/Microsoft SQL Server SA user, or any user with "sysadmin" privileges.
Password	Enter the password for the SYSTEM/SA user entered.

10. On the Pre-Installation Summary screen, review the installation parameters you have selected:

- If you want to change any settings, click **< Back** to go back and make the necessary changes.
- If you are satisfied with these settings, click **Install >** to begin the installation.

Once initiated, the installation process for Costpoint 7.1.x will commence. Please do not interrupt the process.

The installation will stop if any errors are encountered. If any errors occur during the installation, please contact Deltek Technical Support. There is a brief [Troubleshooting Instructions](#) section at the end of this document.

11. Upon completion, the Install Summary screen will show the results of the installation process.

For each Feature you selected to install, you should see either a SUCCESS message or an indication that there were No Errors or Execution Not Needed.

Any Errors indicated should be further researched in the applicable detailed log file(s) and reported to Deltek Technical Support.

12. Click **Next >**.

13. If the "Please reinstall the Costpoint Windows Service on each WebLogic node in order to use the updated JDK version." message displays, click **OK**.

If you receive this message, you may need to reinstall your Costpoint Windows Service in a subsequent step below.

14. If the "Cluster Configuration detected. The Costpoint service has been renamed from version 7.1.1 to version 7.1. Please review the Costpoint service configuration(s) in the Service Control Manager and configure as necessary." message displays, click **OK**.

If you receive this message, you will need to manually uninstall all existing Costpoint Windows Services before reinstalling your Costpoint Windows Services in a subsequent step below.

15. On the Installation Summary Results screen, select the check box to launch the HTML page containing the installer log files and click **Finish** to exit the installation.

16. The MR_Setup_SummaryResults.log file opens, showing you the same SUCCESS, No Errors, and Execution Not Needed messages from the Install Summary screen.

Please review all log files for any Errors or reported issues, although to help identify any issues, all Errors will be in the MR_Setup_ErrorSummaryResults.log.

Please refer to the Post Installation [MR Installer Log Files](#) section for more information on the logs folder structure and contents.

Note: If you are running a WebLogic cluster, you must repeat this step for all of your WebLogic servers.

Run the step once on your Cluster master and choose **Primary (Updates Costpoint and WebLogic)** for the **Costpoint Tier Type**. Then, on each of your cluster nodes, choose **Secondary (Updates WebLogic only)** for the **Costpoint Tier Type**.

Please refer to the [DeltekCostpoint711ConfigurationUtility.pdf](#) technical guide for more information on WebLogic clustering.

Re-Configure Costpoint 7.1 InstallCPWeb Service CMDs

This step provides instructions for reconfiguring the Costpoint 7.1 InstallCPWeb Service CMD files for any that the MR installer has not updated.

Note: This step only needs to be done after your initial 7.1.x MR installation, and only if you have InstallCPWebService CMD files different from those listed below.

This step must be performed on your Costpoint 7.1 WebLogic application server as well as any WebLogic server nodes.

The following are the Costpoint 7.1 InstallCPWeb Service CMD files that the MR installer updates:

```
SET SERVICE_NAME="Costpoint 7.1.1"
```

becomes

```
SET SERVICE_NAME="Costpoint 7.1"
```

- **InstallCPWebasService.cmd**
- **InstallCPWebNodeAsService.cmd**
- **InstallCPWebNodeAsServiceDEServer1.cmd**
- **InstallCPWebNodeAsServiceDEServer2.cmd**
- **InstallCPWebNodeAsServiceDEServer3.cmd**
- **InstallCPWebNodeAsServiceDEServer4.cmd**
- **InstallCPWebNodeAsServiceDEServer5.cmd**

If you have any other **InstallCPWebService CMD** files, you will need to manually update them to the new SERVICE_NAME.

This is a one-time update, just the first time you install an MR. For all future MR installations the SERVICE_NAME will already be at Costpoint 7.1 and not require any further changes.

To reconfigure any Costpoint 7.1 Windows service CMD files:

1. Edit **InstallCPWebxxxService.cmd**.
2. Change SET SERVICE_NAME="Costpoint 7.1.1" to **SET SERVICE_NAME="Costpoint 7.1"**
3. Save **InstallCPWebxxxService.cmd**.

Re-Install Costpoint 7.1 Windows Service

This step provides instructions for re-installing the Costpoint 7.1 Windows service on any WebLogic nodes. Successful completion of the MR installer should have automatically uninstalled your Costpoint 7.1.1 Windows service and installed the Costpoint 7.1 Windows service.

Note: If you are running a WebLogic cluster, you must repeat this step for all of your Costpoint Windows Services.

This step must be performed on your Costpoint 7.1 WebLogic application server for any WebLogic server nodes.

To re-install Costpoint 7.1 nodes to run as a Windows service:

1. Use Windows Explorer to navigate to the directory where the Costpoint 7.1 software was installed (C:\Deltek\Costpoint\71\bin).
2. Right click on **InstallCPWebAsService.cmd/InstallCPWebNodeAsService.cmd**, and select **Run as administrator**.

Re-Configure and Start Costpoint 7.1 Windows Service

The steps for configuring the Costpoint 7.1 Windows service are detailed in this section. Successful completion of the MR installer should have automatically uninstalled your Costpoint 7.1.1 Windows service and installed the Costpoint 7.1 Windows service.

This step must be performed on your Costpoint 7.1 WebLogic application server as well as any WebLogic server nodes.

To configure Costpoint 7.1 Windows service:

1. Click **Start » Administrative Tools » Services**.
2. On the Services window, scroll down the **Services** drop-down list, right-click the **Costpoint 7.1** service, and click **Properties** on the shortcut menu.
3. On the Costpoint 7.1 Properties screen, click the Recovery tab, and complete the following fields.

Field Name	Action
First failure	Change the drop-down selection from Take No Action to Restart the Service .
Second failure	Accept the default value, Take No Action .
Subsequent failures	Accept the default value, Take No Action .
Reset fail count after	Change the value from 0 to 1 days.
Restart service after	Accept the default value, 1 minute.

4. Click **Apply**.
5. On the Costpoint 7.1 Properties screen, click the Log On tab, and complete the following fields.

Field Name	Action
Account	Enter the domain Account. For example, domain\useraccountname. If you are using a domain service login account instead of the "Local System Account," select This Account .
Password	Enter the password for the domain Account.
Confirm Password	Re-enter your password for the domain Account.

- Click **Apply**.

Make sure that the login account for the Costpoint Service is in the local Administrators group on the Application Tier server and is part of the local security group created by the original Costpoint 7.1.1 Application Tier installer, CostpointToolsGroup.

Also, keep in mind that this login account must be given full access permissions for any Alternate File locations set up (network shared directories). Alternate File locations are used for Costpoint users for uploading and downloading files from within Costpoint.

- On the Costpoint 7.1 Properties screen, click the General tab, and click **Start** to start the Costpoint 7.1 service.

The service will indicate that it started immediately. However, please note that it takes several minutes for the Costpoint 7.1 service to fully initialize.

After starting the service, wait several minutes before attempting to connect to the software.

If you encounter problems with the Costpoint 7.1 service, check the C:\Deltek\Costpoint\71\logs\DEServer.log file and report any errors to Deltek Costpoint 7.1 Technical Support.

- Click **OK** to close the Costpoint 7.1 Properties screen, and close the Services window.

Update Costpoint Web Services (PMFG SFT/MES Clients)

Follow these steps to update the PMFG Web Services in Costpoint so that data can flow to and from Costpoint and SFT and MES.

You must perform these steps on your Costpoint WebLogic application server.

To update Costpoint Web Services:

- Click **Start » All Programs » Administrative Tools » Services**.
- In the Services window, scroll down the Services list and **Stop** the **Costpoint 7.1** service.
- Close the Services window.
- Click **Start » All Programs » Costpoint 7.1.1 » Start Costpoint 7.1.1 Integration Console**.

Note: Due to enhanced security in Windows Server, you should use the **Run as Administrator** option when launching this command, even if you have local administrative rights.

- On the Costpoint Integration Login screen, configure the following options, then click **Next**:

Option	Action
User	Enter CPSUPERUSER .
Password	Enter the password for your CPSUPERUSER user.
System	Select your Costpoint system from the drop-down list, i.e. DELTEKCP.

6. Under Available Options, select **Modify Integration Console Properties**, and click **Next**.
7. On the Build Properties tab, select **Username Token** for Web Service Auth, Type.
8. On the Advanced Properties tab, select **All** for Show Web Services.
9. On the “System web services are intended to be used internally by Costpoint. Modifying or invoking them directly can break the integration with Costpoint.” message, click **OK**.
10. Click **Save**.
11. Click **Close**.
12. Under Available Options, select **Build/Deploy Integration Modules (Web Services/EJBs)**, and click **Next**.
13. Click **Import....**
14. On the Please select Web Service jar files you want to import screen, configure the following options, then click **Next**.
15. For Mode, select **Multiple**.
16. For Hotfix Folder, click ..., and navigate to your **C:\Deltek\Costpoint\71\cpupdates\wspmf** folder. This folder was created and populated with the Costpoint MR installer.
17. Click **Import**. The following Web Services will get deployed.
 - LDMTIME (Manage Timesheets)
 - PCMCOMP (MO Operation Completions)
 - PCMINSP (MO QC Inspection Results)
 - PCMINSPOBJBASE (MO QC Inspection Results)
 - PCMMOMNTOBJBASE (Manage Manufacturing Orders)
 - RCMINSPOBJBASE (QC Inspection)
 - RUMROUTOBJBASE (Routings)
 - CPWWSPCMMOISSOBJBASE (MO Issues Module)

Warning: You may need to reapply these Web Service files each time you install a new Costpoint MR.

18. When the “Hot fixes have been applied without errors.” message appears, click **OK**.
19. Click **Close**.
20. Under Available Options, select **Modify Integration Console Properties**, and click **Next**.
21. On the Advanced Properties tab, select **Regular** for Show Web Services.

22. Click **Save**.
23. Click **Close**.
24. Click **Exit**.
25. Click **Start » All Programs » Administrative Tools » Services**.
26. In the Services window, scroll down the Services list and **Start** the **Costpoint 7.1** service.
27. Close the Services window.

Post-Installation

MR Installer Log Files

MR Installation logs are written to the following folder:

C:\Program Files\Deltek\Costpoint\7.1.1\Logs\MR_Installer

Each of these log files are detailed in the table below, but here is a look at the log folder/file structure:

C:\Program Files\Deltek\Costpoint\7.1.1\Logs\MR_Installer

DeltekCostpointMaintenanceReleaseSetup.log

MR_Installer_Logs.html

MR_Setup_ErrorSummaryResults.log

MR_Setup_SummaryResults.log

C:\Program Files\Deltek\Costpoint\7.1.1\Logs\MR_Installer\APIs

CreateAESKeys.log

RemoveSessionActuateApiEjb.log

Update2NewSecurityProvider.log

UpdateDedicatedEjbsUrls.log

UpdateTestTableForBpTePoolsApi.log

MRLinkViews_<System>.log

<Database Server>_<Instance>_<System>_MSSQLInstallMetadata.log

<Database Server>_<System>_OracleInstallMetadata.log

C:\Program Files\Deltek\Costpoint\7.1.1\Logs\MR_Installer\APIs\ApplyMREngine_DB

apply_db_<System>_<Date>_<Time>.log

apply_db_summary_<Date>_<Time>.log

ApplyMREngineDB_result_xml.log

C:\Program Files\Deltek\Costpoint\7.1.1\Logs\MR_Installer\APIs\ApplyMREngine_RMENU

ApplyMREngineRMENU_<System>_result_xml.log

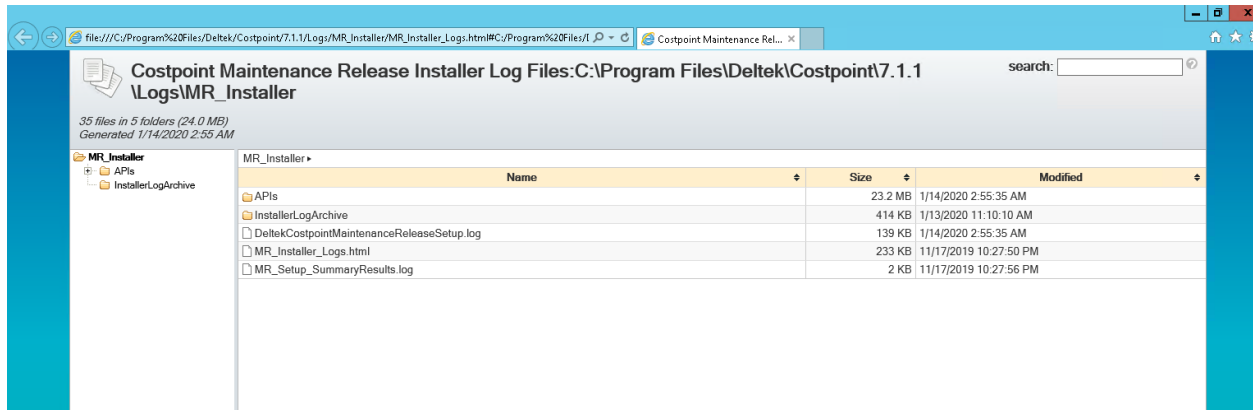
menu_n_ext_<System>_<Date>_<Time>.log

menu_n_ext_summary_<Date>_<Time>.log

C:\Program Files\Deltek\Costpoint\7.1.1\Logs\MR_Installer\InstallerLogArchive

Selecting the **Launch the HTML page containing the installer log files** from the Installer Summary Results screen launches the following page:

Post-Installation



The following table provides the list of log files generated during the MR Installation, The folder they are under, along with a description of each, as well as what to look for when reviewing them:

Log Name	Description	What to Look For
C:\Program Files\Deltek\Costpoint\7.1.1\Logs\MR_Installer		
MR_Installer_Logs.html	HTML Page showing all MR installer log files and locations (Chrome or Firefox Recommended).	List of log files.
DeltekCostpointMaintenanceReleaseSetup.log	Main MR installation Log File. Shows detailed results of all processes executed in the installer. (Multiple log files for this, older ones from previous MR installer runs stored under InstallerLogArchive folder.)	Date and Build number at the top, Installation Success or failed at the bottom. Installation details, including metadata results, Error or Failed messages in between.
MR_Setup_SummaryResults.log	Installer Summary description Panel output written to a log file. Contains the results of the installation process. (Multiple log files for this, older ones from previous MR installer runs stored under InstallerLogArchive folder.)	SUCCESS items, FAILED items with error messages, and/or Warning messages.
MR_Setup_ErrorSummaryResults.log	MR installer error output written to a log file. Contains any ERROR results of the installation process. (Multiple log files for this, older ones from previous MR installer runs stored under InstallerLogArchive folder.)	Any errors during the installation will be written to this file. This will then lead you to the other logs for more detailed description of the errors.
C:\Program Files\Deltek\Costpoint\7.1.1\Logs\MR_Installer\APIs		
MRLinkViews_(SystemName).log	Log file containing details of Link Views process.	Will show error details if any at bottom.

Log Name	Description	What to Look For
(Database Server)_(Instance)_(System DB Name)_MSSQLInstallMetadata.log (Database Server)_(System DB Name)_OracleInstallMetadata.log	MR installer only, shows results of MetaData process.	Will show errors if any.
CreateAESKeys.log	Results of CreateAESKeys API execution when converting 3DES to AES encryption in toolconnection.properties file if needed.	Will show success or fail or nothing to do.
RemoveSessionActuateApiEjb.log	Results of RemoveSessionActuateApiEjb API execution. This will remove references of unused sessionactuateapiejb.jar file and references from xml files.	Will show results of process, or nothing to do, and will show error messages at bottom if any.
Update2NewSecurityProvider.log	Results of Update2NewSecurityProvider API execution. This API adds/removes security authenticator's support within our config.xml.	Will show results of authenticators that were added or removed, nothing to do, or error messages at bottom if any.
UpdateDedicatedEjbsUrls.log	Results of UpdateDedicatedEjbsUrls API. This API reads/updates the enterprise.properties for dedicated server URLs and updates as needed.	Will show results of process, nothing to do, or error messages at bottom if any.
UpdateTestTableForBpTePoolsApi.log	Results of UpdateTestTableForBpTePoolsApi. This API updates test table for B&P and TE JDBC pools process.	Will show results of process, nothing to do, or error messages at bottom if any.
C:\Program Files\Deltek\Costpoint\7.1.1\Logs\MR_Installer\APIs\ApplyMREngine_DB		
apply_db_(SystemName)_YYYY_MM_DD_TT_TT.log	<p>Results of ApplyMREngine Database API. These logs will show the results of the execution of Patches, Stored Procedures, and Dynamic Data.</p> <p>(Multiple log files for this, older ones from previous MR installer runs stored under InstallerLogArchive folder.)</p>	Will show patches already applied and results of patches, SPs and DD that were applied during the MR install process. Will show success results along with any error messages if any. Any Error messages about DROP procedure not existing can be ignored.

Log Name	Description	What to Look For
apply_db_summary_YYYY_MM_DD_TT_TT.log	A quick summary of the results of Patches, SPs and DD applied on the date of the log file. (Multiple log files for this, older ones from previous MR installer runs stored under InstallerLogArchive folder.)	Contains summary of system name and time references for DB application process, DB Wizard version number and whether or not Parallel mode was used.
ApplyMREngineDB_result_xml.log	An XML summary used by the installer to determine success or failure of the different processes executed.	Will show a 1 for success or 0 for failure or nothing needed in the case of LinkViews.
C:\Program Files\Deltek\Costpoint\7.1.1\Logs\MR_Installer\APIs\ApplyMREngine_RMENU		
ApplyMREngineRMENU_(SystemName)_result_xml.log	An XML summary used by the installer to determine success or failure of the different processes executed.	Will show a 1 for success or 0 for failure.
menu_n_ext_(SystemName)_YYYY_MM_DD_TT_TT.log	Summary of rebuilding User Menus and Reviewing/Refreshing Extensibility. (Multiple log files for this, older ones from previous MR installer runs stored under InstallerLogArchive folder.)	Will shows start and end of process and error messages if any.
menu_n_ext_summary_YYYY_MM_DD_TT_TT.log	A quick summary of the results of Rebuild User Menus API applied on the date of the log file.	Will shows start and end of process and error messages if any.
C:\Program Files\Deltek\Costpoint\7.1.1\Logs\MR_Installer\InstallerLogArchive		
C:\Program Files\Deltek\Costpoint\7.1.1\Logs\MR_Installer\InstallerLogArchive\APIs\ApplyMREngine_DB		
C:\Program Files\Deltek\Costpoint\7.1.1\Logs\MR_Installer\InstallerLogArchive\APIs\ApplyMREngine_RMENU		
C:\Program Files\Deltek\Costpoint\7.1.1\Logs\MR_Installer\InstallerLogArchive\APIs\Metadata		
C:\Program Files\Deltek\Costpoint\7.1.1\Logs\MR_Installer\InstallerLogArchive\APIs\MRLinkViews		
	Copies of current log files will get moved to these folders when you run future MRs.	

MR Installer Silent Install Parameters

For those looking to integrate into automation or orchestration platforms there are command line parameters that can be enabled to run the MR Installer without going through the GUI interface.

Note: If you have both Oracle and SQL Server RDBMS versions on the same Database Server (meaning they have same Database Server name), silent install will only work if you run each set of systems separately. Different RDBMS platforms cannot be run silently in the same run.

There are no issues running with the GUI interface, this is a silent install restriction only.

Setup.iss must be in the same folder as the MR Installer executable. This file was downloaded from DSM when you downloaded the DeltekCostpointMaintenanceRelease_7.1.x.nnnn.exe installer. You can find it in the Documentation folder.

Example for silent install with a SINGLE SYSTEM:

```
start /wait DeltekCostpointMaintenanceRelease_7.1.7.1007.exe /s /z"systemnames=DELTEKCP"
/z"instancestring=[[serverName=CPSQLPC1][port=1433][instanceName=CPSYSTEM][saUserId=sa][saPass=Password1]]" /z"primary=true" /f1"C:\Users\Administrator\Desktop\setup.iss"
```

Example for silent install with MULTIPLE SYSTEMS:

```
Start /wait DeltekCostpointMaintenanceRelease_7.1.7.1007.exe /s /z"systemnames=DELTEKCP,DELTEKCP2"
/z"instancestring=[[serverName=CPSQLPC1][port=1433][instanceName=CPSYSTEM][saUserId=sa][saPass=Password1]][[serverName=CPSQLPC2\SQL2014][port=1433][instanceName=CPSYSTEM_2014][saUserId=sa][saPass=Password1]]" /z"primary=true" /f1"C:\Users\Administrator\Desktop\setup.iss"
```

Example for silent install on SECONDARY Node:

```
start /wait DeltekCostpointMaintenanceRelease_7.1.7.1007.exe /s /z"secondary=true"
/f1"C:\Users\Administrator\Desktop\setup.iss"
```

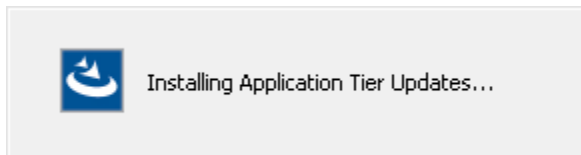
The following table provides the list of parameters along with a description for the use of each:

Parameter Name	Description	Required?
/s	Use this parameter to indicate Silent Mode.	Y
/f1"<Path to>\setup.iss"	Use this parameter to indicate where the required setup.iss file is located.	
/z"systemnames="	<p>Use this parameter to indicate the System(s) to be updated with the MR. Single system name or delimited system names, separated by a comma.</p> <ul style="list-style-type: none"> Single System example: DeltekCostpointMaintenanceRelease_7.1.7.1007.exe /z"systemnames=DELTEKCP1" Multiple Systems example: DeltekCostpointMaintenanceRelease_7.1.7.1007.exe /z"systemnames=DELTEKCP1,DELTEKCP2,DELTEKCP3" 	Y

Parameter Name	Description	Required?
/z"instancestring="	<p>Use this parameter to indicate the Database Instances used in your configuration. This is used to execute Patches, Dynamic Data, Stored Procedures and LinkViews, using the SA username and Password on the specified database instance/host(s).</p> <p>Format is the same for SQL Server and Oracle. See examples below:</p> <p>[[serverName=(servername\non-default SQL Instance)][port=(portnumber)][instanceName=(Meta DB Name or SERVICE NAME)][saUserId=(SA or SYSTEM username)][saPass=(SA or SYSTEM password)]]</p> <ul style="list-style-type: none"> SQL Server Example (1 instance) <p>/z"instancestring=[[serverName=CPSQLPC1][port=1433][instanceName=CPSYSTEM][saUserId=sa][saPass=Password1]]"</p> <ul style="list-style-type: none"> SQL Server Example (2 or more instances, there are no delimiters or spaces between multiple instance strings.) <p>/z"instancestring=[[serverName=CPSQLPC1\SQL2014][port=1433][instanceName=CPSYSTEM2][saUserId=sa][saPass=Password1]][[serverName=CPSQLPC2][port=1433][instanceName=CPSYSTEM3][saUserId=sa][saPass=Password1]]"</p> <ul style="list-style-type: none"> Oracle Server Example (1 instance) <p>/z"instancestring=[[serverName=ORADB][port=1521][instanceName=PDBORCL][saUserId=SYSTEM][saPass=Password1]]"</p> <ul style="list-style-type: none"> Oracle Server Example (2 or more instances, there are no delimiters or spaces between multiple instance strings.) <p>/z"instancestring=[[serverName=ORADB][port=1521][instanceName=PDBORCL][saUserId=SYSTEM][saPass=Password1]][[serverName=ORADB][port=1521][instanceName=PDBORCL2][saUserId=SYSTEM][saPass=Password2]]"</p>	Y
/z"skipapp=true"	Use this parameter to not extract files to the file system. This would include class files, EJBs, static html, JavaScript, and properties files. It does not apply to WL CPUs, or JDKs.	
/z"skipdb=true"	Use this parameter to not apply patches, dynamic data, or stored procedures.	
/z"skipweb=true"	Use this parameter to not apply Costpoint DEWebApp OR Costpoint Web Tier DEWebApp files (same as /skipdewebapp=true).	
/z"skipmeta=true"	Use this parameter to not import metadata into CPSYSTEM(s).	
/z"skiplinkviews=true"	Use this parameter to not execute LinkViews, generate menu data, or validate extensibility.	
/z"skiptelicensecheck=true"	Use this parameter to indicate all of the TE schemas are properly licensed in your Costpoint systems. Without this parameter the silent installer will provide a list of all Costpoint Systems with TE licenses for you to review.	

Parameter Name	Description	Required?
/z"startversion="	Use this parameter to not re-apply previous MR database archives that have already been installed. If valid MR version number, MR will extract and apply this version + all forward versions. Example: /z "startversion=7.1.4" In this case, if we were installing the 7.1.5 MR, extract patches from the 7.1.4 archive, but skip the already applied 7.1.2 and 7.1.3 archives, reducing installation time.	
/z"primary=true"	Use this parameter on primary Nodes. If set to true, force the installer to set the installer tier type to primary.	Y
/z"secondary=true"	Use this parameter on Secondary Nodes. If set to true, force the installer to set the installer tier type to secondary. (This will only install WL patches and JDK.)	
/z"showcmdwindow=true"	Use this parameter to display a command prompt window with progress during application of Patches, SPs, Dynamic Data, and Metadata.	
/z"showstatus=false"	Use this parameter to not display the status window shown below, during silent install.	
/z"filedynamicdownload=true"	Use this parameter to download the required parameter file (DeltekCostpointRequirementsINI.exe) when your application server does not have Internet access.	
/z"skiponline=true"	Use this parameter when your application server does not have Internet access to prevent the MR installer from trying to access DSM to download the required parameter files. You will need to have already downloaded them and copied them to your application server in the same folder as the MR installer EXE.	

Silent install will show this type of status box as it proceeds through each Feature:



Troubleshooting Instructions

Troubleshooting instructions for problems with the Maintenance Release installation are detailed in this section.

Costpoint 7.1 Windows Service Will Not Start

Try reinstalling and reconfiguring the Costpoint 7.1 Windows service by running `C:\Deltek\Costpoint\71\bin\InstallCPWebasService.cmd` (remember to Run as Administrator).

CPWeb DEWebApp Copy FAILED: Cannot Create a File When that File Already Exists

A lock might exist on a Costpoint DEWebApp IIS file. You may need to Restart or even Stop IIS.

Make sure there are no file locks through **Computer Management » Shared Folders » Open Files**.

If you have done all the above suggestions and still see locked files, you can select and close Open Files from there.

Once there are no locked files, re-run the **DeltekCostpointMaintenanceRelease_7.1.x.nnnn.exe**, selecting the Web Tier Feature only.

Latest Installer Files Download Instructions

The instructions to download the latest **DeltekCostpointRequirementsINI.exe** file is detailed in this section. Each installer will automatically download the applicable file if your servers have Internet access. If your servers do not, you will need to run this step.

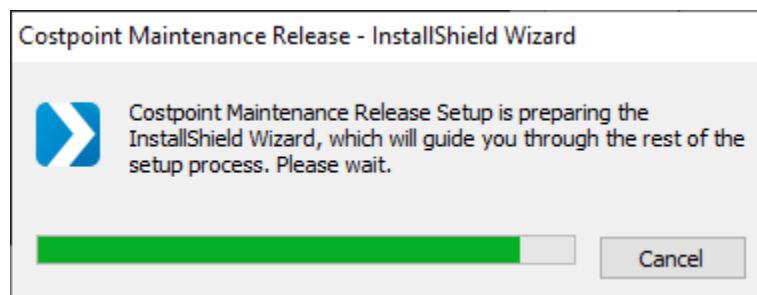
You must perform this step on any machine that has Internet access.

To download the required MR Installer file:

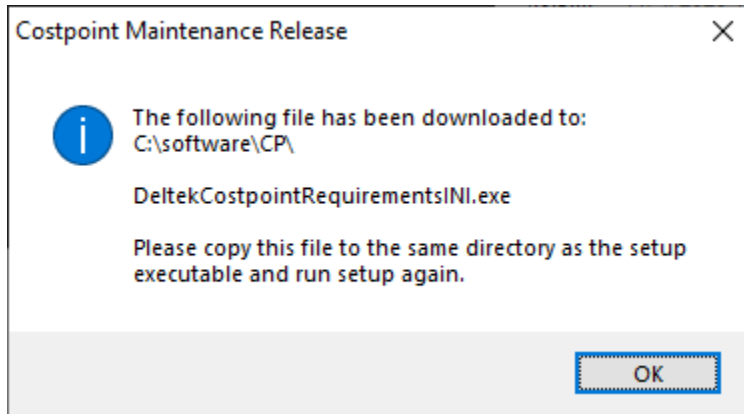
1. Run the applicable command to retrieve the file from DSM:

`DeltekCostpointMaintenanceRelease_7.1.11.1002.exe /z"filedynamicdownload=true"`

You will see a screen similar to the following.



2. After the file downloads, a message similar to the following displays. Click **OK**.



3. Copy the downloaded **DeltekCostpointRequirementsINI.exe** file to your server, in the same folder as your MR '.exe' installer file.
4. When running the MR Installer on your application servers/nodes, invoke this applicable command:

DeltekCostpointMaintenanceRelease_7.1.11.1002.exe /z"skiponline=true"



About Deltek

Better software means better projects. Deltek delivers software and information solutions that enable superior levels of project intelligence, management and collaboration. Our industry-focused expertise makes your projects successful and helps you achieve performance that maximizes productivity and revenue. www.deltek.com