

Deltek.

Deltek PPM Administrator 1.0

Installation Guide

May 16, 2025



While Deltek has attempted to verify that the information in this document is accurate and complete, some typographical or technical errors may exist. The recipient of this document is solely responsible for all decisions relating to or use of the information provided herein.

The information contained in this publication is effective as of the publication date below and is subject to change without notice.

This publication contains proprietary information that is protected by copyright. All rights are reserved. No part of this document may be reproduced or transmitted in any form or by any means, electronic or mechanical, or translated into another language, without the prior written consent of Deltek, Inc.

This edition published May 2025.

© Deltek, Inc.

Deltek's software is also protected by copyright law and constitutes valuable confidential and proprietary information of Deltek, Inc. and its licensors. The Deltek software, and all related documentation, is provided for use only in accordance with the terms of the license agreement. Unauthorized reproduction or distribution of the program or any portion thereof could result in severe civil or criminal penalties.

All trademarks are the property of their respective owners.

Contents

Overview	1
Adding Custom Notes to This Guide.....	1
Downloading Deltek Products using Deltek Software Manager.....	2
Accessing DSM from within the Deltek Support Center	2
Accessing DSM Lite	3
DSM Documentation and Troubleshooting	3
Pre-Installation Checklist.....	4
Before You Begin Deployment.....	5
System Requirements.....	6
Hardware Sizing Considerations	6
Hardware Requirements	6
Standalone Deployment.....	6
Software Requirements.....	7
Supported Deployment Technology.....	7
Supported PPM Product Versions.....	8
Compatible Deployment Technology.....	9
Install PPM Administrator	10
Post-Installation Checklist.....	17
Troubleshooting PPM Administrator	24
Contact Technical Services.....	24
Send Files to Deltek	24
Error Encountered When Using the SQL.NET Framework Database Provider	24
Appendix A: Set the HTTPS Site Binding in IIS	25
Appendix B: Microsoft Internet Information Service (IIS) Installation on Windows Server.....	26
Check If Microsoft (IIS) Is Already Installed	26
Install Microsoft IIS For the First Time	26
Enable the IIS Feature from a PowerShell Console	28
Appendix C: Create a Data Source.....	29
Appendix D: Import a Data Source.....	31
Appendix E: Run Scripts Using the Deltek PPM Database Configuration Wizard.....	32
Appendix F: Workaround for Installing PPM Administrator on Oracle Data Sources with Windows Authentication	35

- Appendix G: Enable PPM Administrator to Use Data Sources with Basic Authentication..... 36
- Appendix H: Unlock a Section in IIS 37
- Appendix I: If You Need Assistance..... 40
 - Customer Services 40
 - Deltek Support Center..... 40
 - Access Deltek Support Center.....41
 - Additional Documentation.....41

Overview

The Deltek PPM Administrator1.0 is the next generation of the Deltek EPM Security Administrator, replacing both the Windows desktop and Smart Client product versions by consolidating them into a single Web-based tool.

Using the PPM Administrator, you can manage access control, configure AI settings, manage licensing, and more for all Deltek PPM products including Acumen, Cobra, Open Plan, PM Compass, and wlnsight Analytics. Now that PPM Administrator is web-based, you can install it on a local Web server and access the application from a URL.


To access PPM Administrator, click **Start > All Programs > Deltek PPM Administrator**.

Note: Two or more users who are logged on to a shared server at the same time can each run PPM Administrator. Each individual logged-on user can only run one instance of the application.

Adding Custom Notes to This Guide

If you would like to add custom notes to this guide that are specific to your company, Adobe® Reader® X provides this ability. If you do not already use Adobe Reader X, you can download it [here](#) free from Adobe.

To add a custom note using Adobe Reader X:

1. On the Reader toolbar, click **Comment** at the far right.
2. In the **Annotations** pane that displays, click  **Sticky Note**.
The cursor changes to match the button.
3. Position the cursor at the location in the guide where you want the note to appear and click.
A note icon is inserted at the location and a text box pops up.
4. Enter your information in the text box.
5. Continue adding notes as needed.
6. Save the document.

Note: Deltek recommends that you save the document to a slightly different filename so as to keep the original from being overwritten.

When reading the document, cursor over a note icon to see the information. Double-click a note icon to edit the information.

Downloading Deltek Products using Deltek Software Manager

You can use Deltek Software Manager (DSM) to download complete Deltek products, hot fixes, cumulative updates, and sub-releases. You can access DSM through the Deltek Support Center or use Deltek Software Manager Lite to download Deltek products.

Accessing DSM from within the Deltek Support Center

To access DSM from within the Deltek Support Center:

1. In your Web browser, go to <https://deltek.custhelp.com>.
2. Enter your Deltek Support Center **Username** and **Password** and click **Login**.
3. When the Deltek Support Center page displays, click **Product Downloads**.
4. On the Deltek Software Manager screen, click **Launch Deltek Software Manager**.
5. Click **Settings** at the top right of the dialog box to use the Settings dialog box to specify the folder where you want to download Deltek products and click **OK**.

Note: When you log on for the first time, DSM asks you to select a default folder where Deltek products are to be downloaded.

You can change this folder anytime in the Settings dialog box.

6. In the left pane, expand the Deltek product that you want to download, if it is not already expanded.
7. Select the product type that you want to download.

Options include:

- **Complete**
- **Cumulative Updates**
- **HotFixes**
- **Sub-Release**

8. In the table, select the check box that corresponds to the Deltek product that you want to download.

The right pane displays a message stating that the product has been added to the download queue.

Note: To view the items in the download queue, click **View Download Queue** at the bottom of the left pane.

9. Click **Download** at the bottom of the left pane to download the product to the folder that you selected.

Accessing DSM Lite

To access Deltek Software Manager Lite:

1. In your Web browser, go to <https://dsm.deltek.com/DeltekSoftwareManagerLite>.
2. Enter your Deltek Support Center **Username** and **Password** and click **Logon**.
3. When the Deltek Software Manager Lite page displays, select a product from the drop-down list.
4. Click the product type that you want to download.

Note: The download behavior and download folder may differ depending on the browser and browser settings that you are using.

DSM Documentation and Troubleshooting

- To view the online help for Deltek Software Manager, click here.
- To view a tutorial on how to use Deltek Software Manager, click here.
- To view more information on troubleshooting Deltek Software Manager, click here.

Note: When you click a link, you will be asked to log into DSM if you aren't already logged in.

Pre-Installation Checklist

This chapter covers the pre-installation checklist for PPM Administrator.

Steps	Related Topics
1. <i>Check product versions and make sure you are updating the correct machine.</i>	

Before You Begin Deployment

Before you begin deployment, it is important to understand the following:

- Logical Tiers
- Installation / Deployment Models
- Hardware and Software Requirements

System Requirements

Your organization has made a substantial commitment to ensure it has a fully integrated earned value management (EVM) solution. To support that commitment, Deltek recommends that you carefully consider the hardware requirements necessary to run PPM Administrator properly.

Hardware Sizing Considerations

There are several factors that go into sizing an appropriate server infrastructure. The number of concurrent users accessing the system at any given time, the amount of data being analyzed, the number of code and other user-defined fields loaded from schedules, customizations, and growth expectations all have an impact on the initial sizing plans. The hardware profiles are intended as a starting point for deployment. Further in-depth discussions of the business needs of the solution during implementation of application will provide final guidance on hardware requirements.

Hardware Requirements

The number of people using PPM Administrator, the PM Compass processes they are using, and the size of your database all have an effect on the hardware and software requirements for your servers.

Note: Specific server hardware configurations may have an impact on your overall Deltek product licensing requirements. Deltek recommends that you confirm with a Deltek Technical Sales Engineer that the server hardware you plan to deploy is in line with your Deltek license agreement and that you learn how overall server infrastructure expansion in the future may affect your Deltek licensing.

Standalone Deployment

The following table lists the recommended minimum hardware and software requirements for a deployment of Deltek PPM Administrator in standalone, workstation environment.

Tier	Hardware/Software Required	Determining Factors
Client Database Tier	Intel 2.0 GHz or higher 2 GB RAM 10-20GB of available disk space for application, plus additional space for each project	Usage Integration Requirements Database Size Database Growth

Software Requirements

The supported minimum software requirements for the complete installation of Deltek PPM Administrator are listed below.

Attention: For a complete list of the recommended minimum software requirements, see the *Deltek Product Support Compatibility Matrix* document that you can download from the [Deltek Customer Care Connect site](#).

Supported Deployment Technology

Note: Supported versions are the current actively tested versions of technologies used to deploy Open Plan. Except for the Deltek Integrated Products, these technologies are not directly supported by Deltek. Changes to these technologies occur at the discretion of the individual technology vendors.

Supported Deployment Technology	
Web Server	<ul style="list-style-type: none"> ▪ Internet Information Services 10 <div style="border: 1px solid #0056b3; padding: 5px; margin-top: 10px;"> <p>Attention: For the list of Windows features required or checked by the installer, see the Appendix B: Microsoft Internet Information Service (IIS) Installation on Windows Server chapter of this document.</p> </div>
Operating System	<ul style="list-style-type: none"> ▪ Microsoft Windows Server 2019 ▪ Microsoft Windows Server 2022 ▪ Microsoft Windows Server 2022 Azure Edition
Database Platform	<p>Microsoft SQL Server</p> <ul style="list-style-type: none"> ▪ SQL Server 2019 ▪ SQL Server 2022 <p>Oracle</p> <ul style="list-style-type: none"> ▪ Oracle 19.3 <p>Azure SQL</p> <ul style="list-style-type: none"> ▪

Database Driver	<p>PPM Datasource Management Tool supports Oracle, and SQL Server databases through an OLEDB 2.1 compliant provider. The data source providers to use for each database type are listed below.</p> <ul style="list-style-type: none"> ▪ Oracle Provider for OLE DB ▪ MS SQL Server 2012 Native Client, version 11.4.7001.0 or higher ▪ MS OLE DB Driver for SQL Server, version 18.2.2.0 or higher
AI Model Provider	<p>Azure OpenAI GPT-35-Turbo Azure OpenAI GPT-4-Turbo Azure Government Cloud GPT-35-Turbo Azure Government Cloud GPT4-Turbo</p>
Microsoft Office	<p>Microsoft Excel 2019 Microsoft Excel 2021 Microsoft Excel 365</p>
Browsers	<p>Chrome© Firefox© Microsoft Edge Safari®</p>
Microsoft .NET	<p>- ASP.NET Core Runtime 8.0 (Hosting Bundle) - .NET Desktop Runtime 8.0</p>

Supported PPM Product Versions

The table below lists the PPM product versions that fully support PPM Administrator:

Application	Version
Acumen	<ul style="list-style-type: none"> ▪ 8.11
Cobra	<ul style="list-style-type: none"> ▪ 8.7

The table below lists the minimum PPM product versions compatible with PPM Administrator:

Application	Version
Acumen Touchstone	<ul style="list-style-type: none"> 8.10
Cobra	<ul style="list-style-type: none"> 8.5 CU 16 8.6 GA
Open Plan	<ul style="list-style-type: none"> 8.6 CU 13 8.7 CU 08
PM Compass	<ul style="list-style-type: none"> 8.4 CU 16
wInsight Analytics	<ul style="list-style-type: none"> 8.3.2 CU 05 8.3.3 CU 01

To successfully install PPM Administrator 1.0, ensure that all your PPM products are at least at the minimum compatible version. Once installed, you can access PPM Administrator via a URL from any machine, as it is a web-based application.

Important: When Aumen Touchstone and PPM Administrator are installed on the same server and share the same data source, users must run them in separate browsers.

Attention: For features still supported by products shipped with EPM SA 8.5.1, see the Appendix A: Functionality Limitations When Not All Products Support PPM Administrator section in the *Deltek PPM Administrator 1.0 Release Notes*.

Compatible Deployment Technology

Compatible versions are the recent previously supported and tested technologies that can be used to deploy PPM Administrator. These are not actively being tested but are believed to be compatible with PPM Administrator. Deltek does not recommend these technologies for new deployments but will make its best effort to answer questions concerning these technologies. These technologies may not be available for troubleshooting at Deltek.

Compatible Deployment Technology	
Operating System	Microsoft Windows Server 2016
Database Platform	Microsoft SQL Server <ul style="list-style-type: none"> SQL Server 2016 SQL Server 2017 (also supported on Linux and Unix)
Microsoft Office	Microsoft Excel 2016/

Install PPM Administrator

This chapter describes how to install a PPM Administrator on either a stand-alone PC or on a network drive.

Important: Make sure that **Site Binding** is set to **https** in the Internet Information Services (IIS) Manager. For instructions on how to set the site binding, see [Appendix A: Set the HTTPS Site Binding in IIS](#).

To install PPM Administrator:

1. Download the PPM Administrator software using the instructions in the [Downloading Deltek Products using Deltek Software Manager](#) section.
2. Locate the downloaded installer file (**DeltekPPMAdministrator1.0.0.1036.msi**) and note its saved location.
3. Run the installer:
 - a. Search for and right-click on the Command Prompt then select **Run as administrator**.
 - b. Type the full path to the .msi file, including its name.
 - c. Press **Enter** to start the installation.

Note: Make sure to run this with **elevated Administrator privileges** to ensure proper installation.

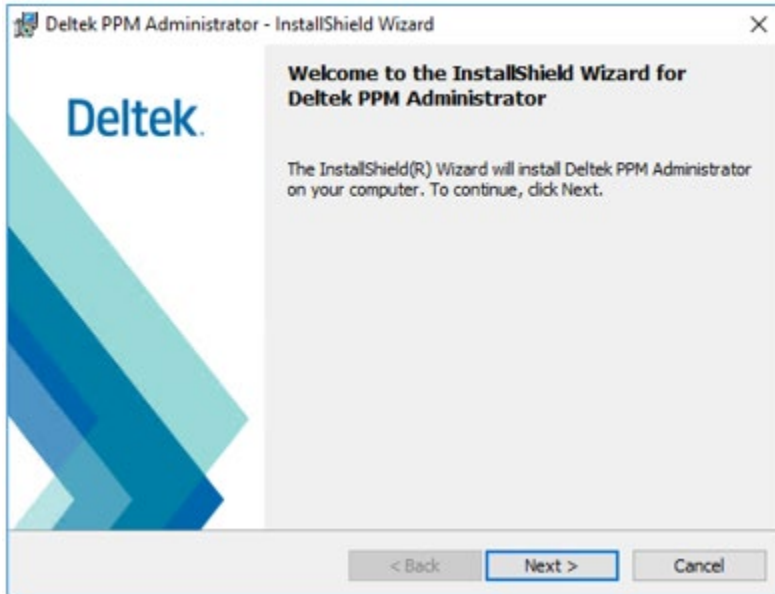
The system validates admin rights. Clicking **Yes** proceeds to the installation welcome screen, while clicking **No** exits the installation.

4. In the User Account Control dialog box, click **Yes**.

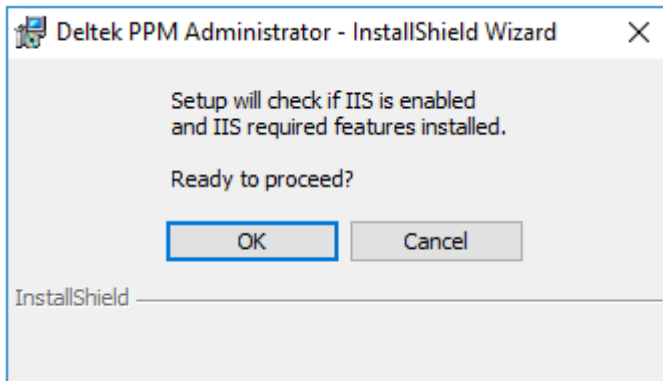
As a requirement, the PPM Administrator installer automatically checks for and installs the following .NET core requirements:

- Microsoft Windows Desktop Runtime 8.0.x x64
- Microsoft .NET 8.0.x - Windows Server Hosting Bundle

5. On the Welcome page, click **INext**.

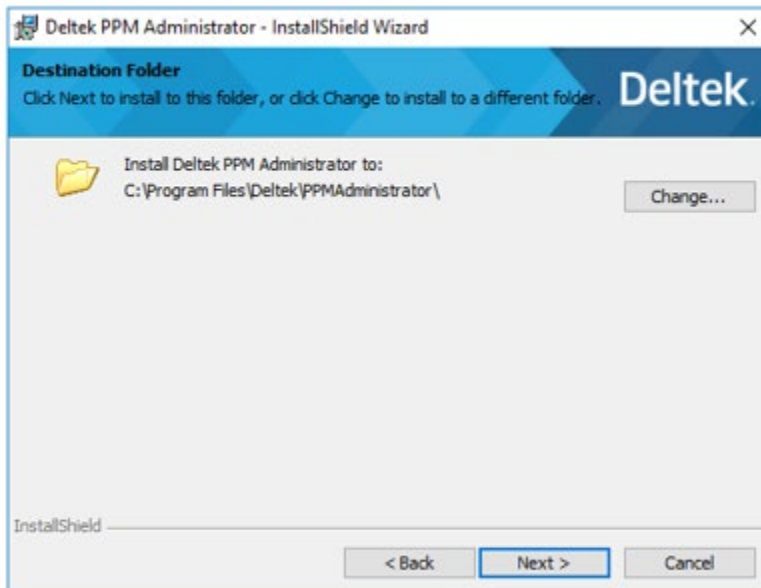


6. In the InstallShield Wizard dialog box checking IIS setup, click **OK**.



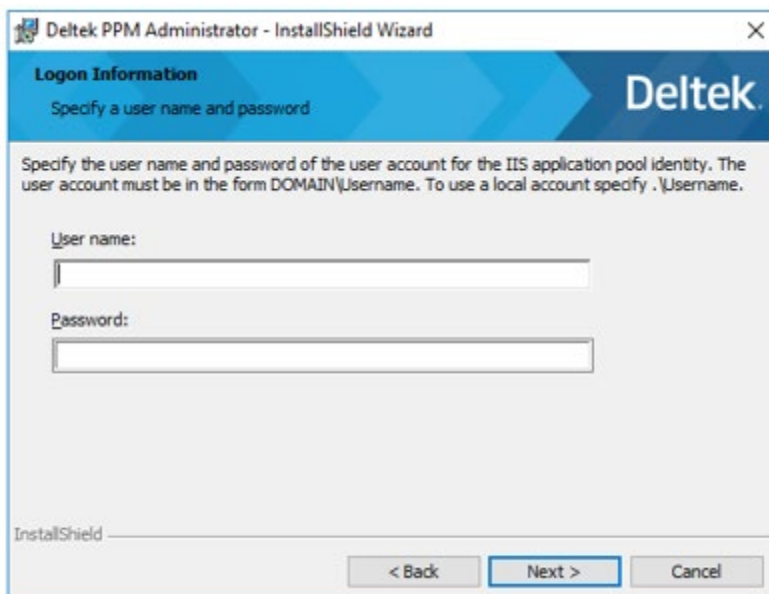
Attention: If IIS is disabled, the installation stops, and the user must download and install the required IIS features. A dialog box displays prompting you to enable it. For instructions on how to enable IIS features, see the [Appendix B: Microsoft Internet Information Service \(IIS\) Installation on Windows Server](#) chapter in this document.

7. On the **Destination Folder** page, click **Next** to install it in the default installation folder. You also have the option to install to a different location by clicking **Change**.



Note: The default installation folder is C:\Program Files\Deltek\PPMAdministrator.

8. On the **Logon Information** page, enter valid user account credentials for the IIS application pool identity, and click **Next**.

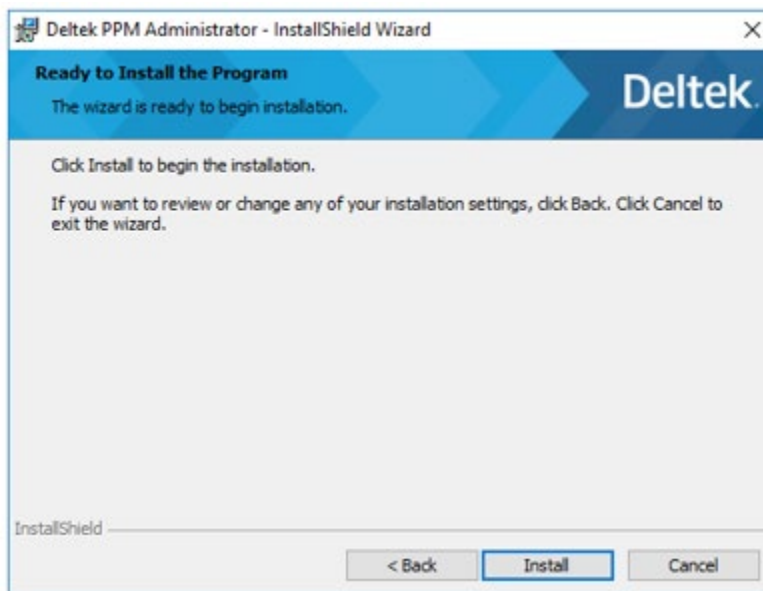


Note: Deltek strongly recommends that you use your domain account.

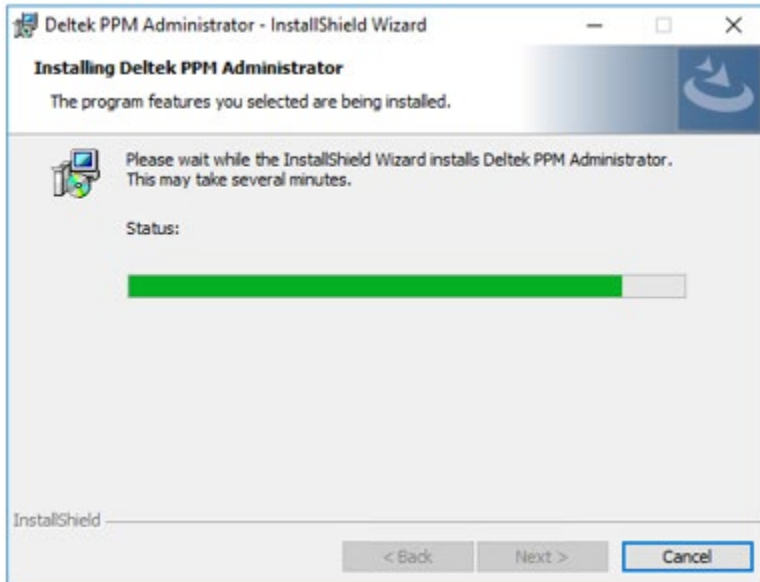
- The **Password** field is masked for security (shown as asterisks or dots).
- Whitespaces are not allowed in either field.
- The **Username** field follows the format <DOMAIN\Username>.

If any of the details (Domain, Username, or Password) are incorrect, an error message displays to help you resolve the issue.

9. On the **Ready to Install the Program** page, click **Install** to start the installation process.



The **Installing Deltek PPM Administrator** page displays the installation progress.



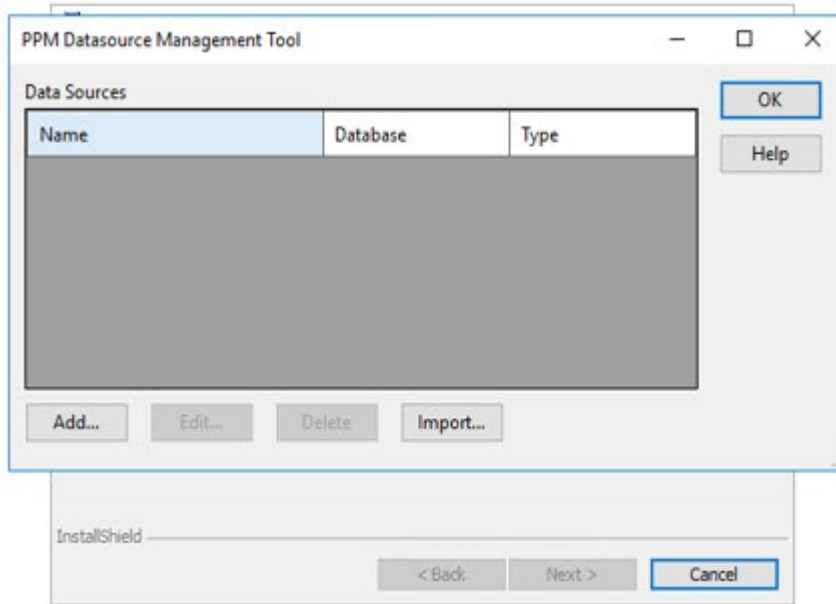
Before the installation completes, the PPM Datasource Management Tool displays automatically. The next step is optional.

Note: There are cases where the `datasource.dat` file already exists in the default location (`C:\ProgramData\PPM`). When this happens, the installer uses the existing file. If it already contains the required data sources, you do not need to make any changes—simply close the PPM Datasource Management Tool dialog box.

Moreover, in those instances where the `datasource.dat` file is missing from the default location or exists but contains no data sources—and you do not add or import any data sources—the Deltek PPM Database Configuration Wizard does not display any items in the list.

The installer then continues automatically. Proceed to step 12.

10. In the PPM Datasource Management Tool, you can add or import a data source.



Attention: For instructions on how to add or import a data source, see the [Appendix C: Create a Data Source](#) or [Appendix D: Import a Data Source](#) chapter in this document.

Make sure that the data source you are adding has at least one PPM product installed.

Attention: To be able to run PPM Administrator successfully, all products installed in the data source must meet the minimum required versions. For more information, see the *Deltek PPM Administrator Release Notes*.

Attention: PPM Administrator is compatible with Oracle data sources configured for Windows Authentication. However, these data sources cannot be used directly to install PPM Administrator. To ensure proper installation, see the [Appendix F: Workaround for Installing PPM Administrator on Oracle Data Sources with Windows Authentication](#) chapter in this document.

Acumen Touchstone customers may be affected with this issue.

11. Once the data sources are defined, click **OK**.

The Deltek PPM Database Configuration Wizard displays. This tool allows users to run PPM Administrator scripts and install PPM Administrator into the selected data sources.

Attention: For the steps on how to run the PPM Administrator scripts, see [Appendix E: Run Scripts Using the Deltek PPM Database Configuration Wizard](#).

When the setup is completed and you click **Finish**, the Deltek PPM Database Configuration Wizard closes.

12. On the **InstallShield Wizard Completed** page, click **Finish**.

Note: To create and display the installation log files, select the **Show the Windows Installer log** option. The log file is saved in the default installation folder (C:\Program Files\Deltek\PPMAdministrator).

13. If there are data sources configured to use **Basic Authentication**, enable PPM Administrator to include them in the selection of data sources on the Login page.

Attention: For more information, see the [Appendix G: Enable PPM Administrator to Use Data Sources with Basic Authentication](#) chapter in this document.

Important: Ensure all sections in IIS are unlocked to avoid errors related to invalid configuration data. If you do encounter such an error, unlock the specific section causing the issue. For detailed steps, see the [Appendix H: Unlock a Section in IIS](#) chapter in this document.

Post-Installation Checklist

This chapter covers the post-installation checklist for PPM Administrator.

Component	Description	
Database	<p>PPM Administrator exists in the WST_PRD table.</p> <p>PRD_UID: 200 DESCRIPTION: PPM Administrator INSTALLDATE: <Date installed> INSTALLEDVER_MAJ: 1 INSTALLEDVER_MIN: 0 INSTALLEDVER_SP: 0 INSTALLEDVER_REVISION: 0 FLAG: 0 ENCRYPTPROTOCOL: 1 HASHPROTOCOL: 4 LICENSE: NULL MSGEXPIRE: NULL MESSAGETEXT: NULL PPM_ADMIN_COMPAT_VER: 1</p> <p>The PPM Administrator license is present in the WST_LICN table.</p> <p>LICN_UID: <License UID> PRD_UID: 200 LICN_KEY: <License Key> LICN_ORG: Deltek LICN_CLIENT_ID: 0000000000</p> <p>If no other PPM products are installed, WST and other required tables should exist.</p>	
Internet Information Services (IIS) Manager	<p>The DeltekPPMAdministratorAppPool in the Application Pools exists.</p> <p>Status: Started .NET: Managed Pipeline: Integrated Identity: <domain>\<username> (the value set in the User Name during installation) Applications: 3 Internet Information Services (IIS) Manager</p> <p>PPM Administrator is listed in the Sites > Default Web Site.</p> <p>Site » Default Web Site » PPM Administrator App PPMAPI</p>	
Task Scheduler	<p>The PPMAdmin Clear Expired Sessions is listed in the Task Scheduler Library</p> <p>Name: PPMAdmin Clear Expired Sessions</p>	

	<p>Status: Ready</p> <p>Triggers: At <Time> on <Date> - After triggered, repeat every 15 minutes indefinitely.</p> <p>Next Run Time: <Datetime></p> <p>Last Run Time: <Datetime></p> <p>Last Run Result: The operation completed successfully. (0x0)</p> <p>Author: <User logged into the machine></p> <p>Created: <Date installed></p>
<p>PPM Administrator is listed in the Programs and Features</p>	<p>Name: PPM Administrator</p> <p>Publisher: Deltek</p> <p>Installed On: <Date installed></p> <p>Size: 306 MB</p> <p>Version: 1.00.0000</p>
<p>Created folders for PPM Administrator</p>	<p>C:\ProgramData\Deltek</p> <p>PPM (which contains config.dat and Datasources.dat)</p> <p>PPMDatasources\Logs (which contains PPMDatasources.log)</p> <p>C:\Program Files\Deltek</p> <p>PPMAdministrator</p> <ul style="list-style-type: none"> ▪ Database ▪ PPMDbConfigWizard ▪ Support ▪ Web <ul style="list-style-type: none"> ▪ app ▪ PPMAPI <p>PPMDatasources</p>
<p>The datasources.dat file in C:\ProgramData\Deltek\PPM contains the data sources that were added, imported, or configured during the installation.</p>	<p>The file should contain the following settings:</p> <pre>[EncryptionProtocol] EncryptionProtocol=1 [Data Sources] <database configuration></pre> <p>The user ID and password must be encrypted.</p>

Check for config.dat in C:\Program Files\Deltek\PPMAdministrator\Web\PPMAPI.

All configurations must have the default values.

For **RequireWinAuthForDatabase**, it is set to **1** by default. Set the value to **0** to allow PPM Administrator to connect to a data source using **Basic Authentication**.

```
[PPM.WebService]
LOGDIR=[INSTALLDIR]\logs
DefaultContentType=application/json
WindowsAuthentication=1
DEVELOPERMODE=0
DEBUGMODE=0
SubmittalProcessingTimeout=15
RequireWinAuthForDatabase=1
AllowGetAuthenticateRequests=1

[PPM.WebService.Engines]
PPMSecurityEngine=PPM.WebService.Engine.PPMSecurity,
PPM.WebService.Engine.PPMSecurity.PPMSecurityService

[PPM.WebService.Session]
AllowSessionCookies=1
OnlySendSessionCookiesSecurely=1
SessionTimeout=15
;RedisHost=127.0.0.1:6379

[PPM.WebService.MQ]
;RedisHost=127.0.0.1:6379

[PPM.WebService.CacheConfig]
AllowCache=false
EnableHttpCache=false

[PPM.WebService.CORS]
EnableCORSFeature=0
;AllowCredentials=1
;AllowedCORSHeader=requestverificationtoken,
accept, content-type, origin, x-timezone-
offset, content-disposition, dvp-export, x-
keep-alive, token, dvp-applicationid
```

	<pre>;AllowOriginWhitelist=http://localhost</pre>
<p>Check for web.config in C:\Program Files\Deltek\PPMAdministrator\Web\PPMAPI.</p>	<p>The CONFIG key in the App Settings must be mapped to config.dat. The DATASOURCES key in the App Settings must be blank.</p> <p>web.config</p> <pre><appSettings> <add key="CONFIG" value="C:\Program Files\Deltek\PPMAdministrator\Web\PPMAPI\config.dat" /> <add key="DATASOURCES" value="C:\ProgramData\Deltek\datasources.dat" /> </appSettings></pre> <p>The CONFIG and DATASOURCES keys are optional, which is why they are commented out by default. When left commented, PPM Administrator uses the default file locations, as shown in the sample values.</p> <p>If you do not comment out these keys and specify a value or location, PPM Administrator will use the specified config.dat and datasources.dat files from the paths defined in the appsettings.</p> <p>All configurations must have the default values.</p> <pre><?xml version="1.0" encoding="utf-8" ?> <configuration> <system.webServer> <validation validateIntegratedModeConfiguration="false" /> <urlCompression doStaticCompression="true" doDynamicCompression="true" /> <handlers> <add name="aspNetCore" path="*" verb="*" modules="AspNetCoreModuleV2" resourceType="Unspecified" /> <add path="*" name="ServiceStack.Factory" preCondition="integratedMode" type="ServiceStack.HttpHandlerFactory, ServiceStack" verb="*" resourceType="Unspecified" allowPathInfo="true" /> </handlers></pre>

	<pre> <aspNetCore processPath="dotnet" arguments=".\\PPMSecurity.WebService.ASPNETHost.dll" stdoutLogEnabled="false" stdoutLogFile=".\\logs\\stdout" hostingModel="inprocess" /> <security> <requestFiltering> <!-- maxAllowedContentLength is specified in Bytes maxAllowedContentLength controls the maximum allowed content length in IIS. Set this value equal to or larger than maxRequestLength to allow content length errors to be handled in the ASP.NET code Otherwise an error will be returned directly from IIS. 750Mb in Bytes = 786432000 (256 * 1024 * 1024) --> <requestLimits maxAllowedContentLength="786432000" /> </requestFiltering> </security> </system.webServer> <!-- The following locations control how authentication behaves between IIS and the browser when Windows Authentication is enabled. It is recommended that these sections remain unchanged to prevent the browser from prompting for credentials when an authentication fails. --> <location path="auth"> <system.webServer> <security> <authentication> <windowsAuthentication enabled="false" /> <anonymousAuthentication enabled="true" /> </authentication> </security> </system.webServer> </pre>
--	--

	<pre> </location> <location path="auth/windows-credentials"> <system.webServer> <security> <authentication> <windowsAuthentication enabled="true" /> <anonymousAuthentication enabled="false" /> </authentication> </security> </system.webServer> </location> <location path="security"> <system.webServer> <security> <authentication> <windowsAuthentication enabled="false" /> <anonymousAuthentication enabled="true" /> </authentication> </security> </system.webServer> </location> <appSettings> <add key="CONFIG" value="C:\Program Files\Deltek\PPMAdministrator\Web\PPMAPI\conf ig.dat" /> <add key="DATASOURCES" value="" /> </appSettings> </configuration> </pre>
<p>PPM Administrator shortcuts are created in the Windows Start Menu.</p>	<p>Deltek PPM Administrator Database Configuration Wizard Datasource Management Tool PPM Administrator (<i>localhost/PPMAdministrator/app/</i>) – This shortcut opens the PPM Administrator in the Microsoft Edge web browser by default.</p>

Important: Restart IIS after making changes to config.dat, data sources, or any PPM Administrator files.

Troubleshooting PPM Administrator

This section provides information on how to contact Deltek if problems occur during installation. It also includes a list of errors that may occur during installation as well as viable solutions.

Contact Technical Services

While Deltek has worked hard to ensure an easy installation, in certain situations installation can be complex, and may require special consideration. The complexity can increase, for example, with multiple server installation, database replication, or other complex deployments. In such cases, we recommend contacting Deltek Technical Services to schedule your PPM Administrator installation.

Deltek's team of technical consultants can assist you with your installation in a timely manner. When you contact the Technical Services department, technical specialists schedule a phone and Microsoft Live Meeting appointment to walk your IT staff through your PPM Administrator installation. Deltek's involvement ensures that all applications are installed properly, regardless of the complexity of the deployment scenario.

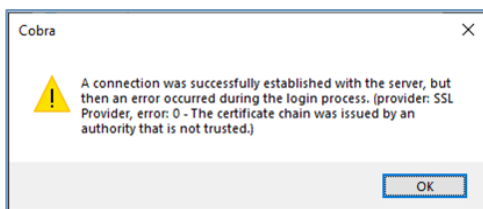
The Technical Services department's assistance is billed on a time and materials basis. While installation assistance is not required, it is recommended that you optimize your investment in PPM Administrator from the time of installation. Many Deltek clients have benefited from the Deltek Technical Services department's experience and knowledge of the PPM Administrator installation process.

Send Files to Deltek

If you encounter any problems while installing PPM Administrator, contact [Deltek Support Center](#) for assistance. To help us resolve your installation issues as quickly as possible, send the installation logs to Deltek when requesting assistance with troubleshooting an installation.

Error Encountered When Using the SQL.NET Framework Database Provider

When using the SQL.NET Framework as your database provider, you may encounter an SSL certificate validation error during login, similar to the following.



If you encounter this error, Deltek recommends that you consult your database administrator and ensure that your server instances are configured with the certificates required by Microsoft.

Attention: For more information, refer to the following Microsoft article: "[Encryption and Certificate Validation in Microsoft.Data.SqlClient.](#)"

Appendix A: Set the HTTPS Site Binding in IIS

Use this procedure to set the HTTPS site binding in IIS.

To set the HTTPS site binding in IIS:

1. Open the **Internet Information Services (IIS) Manager**.
2. Expand **Sites** and select **Default Web Site**.
3. Click **Actions Menu » Edit Site**, select **Bindings...**
4. In the Site Bindings dialog, box add a new site binding (in case HTTPS is not yet added)
5. Set the **Type** to **HTTPS**.
6. Select the SSL Certificate, click **OK** and close the dialog box.
7. Restart IIS.

Appendix B: Microsoft Internet Information Service (IIS) Installation on Windows Server

This chapter covers topics on IIS installation.

Note: To proceed with the PPM Administrator installation, IIS must be enabled. If IIS is currently disabled, refer to the following file for details on the required features:

C:\Users\

Check If Microsoft (IIS) Is Already Installed

If you have already enabled the Web Server role on your Web server, you need to check the features and role services.

To check the features and role services on Windows Server 2016 or 2019:

1. Launch Server Manager.
2. In the left menu, click **IIS**.
If the IIS option is not listed, perform the steps for installing Microsoft IIS for the first time.
3. In the **Roles and Features** group, verify that all the required role services are installed.

Attention: For more information, see Step 11 in [“Install Microsoft IIS For the First Time”](#) below.

Install Microsoft IIS For the First Time

Follow this procedure to install Microsoft IIS for the first time. These steps are necessary for proper detection of ASP.NET.

To install Microsoft IIS on Windows Server 2016 or 2019:

1. Log onto Microsoft Windows Server as a domain or local administrator.
2. Launch Server Manager.
3. Click **Manage » Add Roles and features**.
4. On the Before you begin screen of the Add Roles and Features Wizard, click **Next**.
5. On the Select installation type screen, select **Role-based or feature-based installation** and click **Next**.
6. On the Select destination server screen, select your server and click **Next**.
7. On the Select server roles screen, select **Web Server (IIS)**.
 - a. In the Add Roles and Features Wizard dialog box, click **Add Features**.
8. On the Select server roles screen, click **Next**.

9. On the Select Features screen, expand **.NET Framework 4.x Features**, select **.NET Framework 4.x and ASP.NET 4.x**, and click **Next**.
10. On the Web Server Role (IIS) screen, click **Next**.
11. On the Select role services screen, enable the following sub-options:

- Web Server
- **Common HTTP Features**
 - Default Document
 - Directory Browsing
 - HTTP Errors
 - Static Content
 - HTTP Redirection
- **Health and Diagnostics**
 - HTTP Logging
 - Request Monitor
- **Performance**
 - Static Content Compression
- **Security**
 - Windows Authentication
 - Request Filtering
- **Application Development**
 - .NET Extensibility 4.x
 - ASP.NET 4.x

Note: The Add Roles and Features Wizard dialog box displays when you select this option. Click the **Add Features** button.)

- ISAPI Extensions
- ISAPI Filters
- Management Tools
 - IIS Management Console
 - IIS Management Scripts and Tools

12. Click **Next**.
13. In the Confirm Installation Instructions dialog box, click **Install** to begin the process.

Note: On the Confirm installation selections screen, if a message displays about specifying an alternate source path, see the [Microsoft KB article # 2734782 \(Method 2\)](#).

14. In the Installation Results dialog box, click **Close**.

Note: If you have not applied the supported version of Microsoft.NET on your server, make sure you install it before beginning the PM Compass installation.

Enable the IIS Feature from a PowerShell Console

As an alternative to the graphical user interface, you can enable IIS components from a PowerShell console.

To enable IIS from a PowerShell console:

1. Right-click on the Windows Start Menu and select one of the following options (whichever appears):
 - Windows PowerShell (Admin)
 - Command Prompt (Admin)
 - Enter **PowerShell** and click **Enter**.
2. In the PowerShell console, run the following command:

```
Install-WindowsFeature -Name Web-Server,Web-Http-Redirect,Web-Request-Monitor,Web-Windows-Auth,Web-Net-Ext45,Web-Asp-Net45,Web-ISAPI-Ext,Web-ISAPI-Filter,Web-Scripting-Tools -IncludeManagementTools
```

Appendix C: Create a Data Source

Use the PPM Datasource Management Tool to create a data source that you will use to connect to the PPM Administrator API.

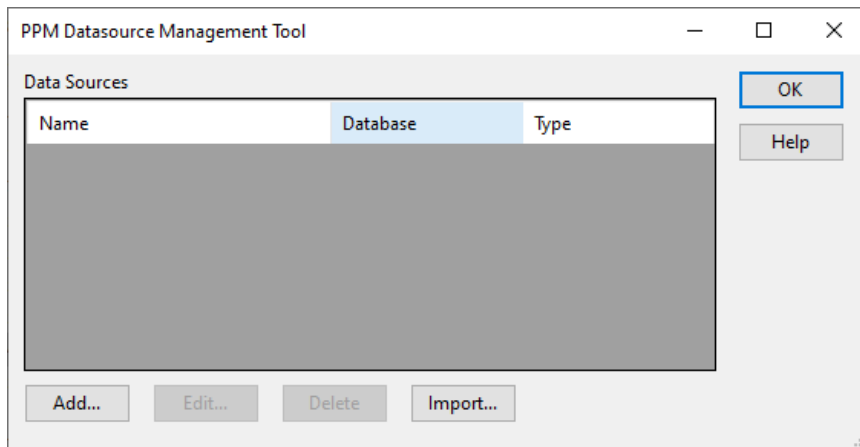
The following providers are currently supported:

- Oracle Provider for OLE DB
- Microsoft SQL Server 2012 Native Client (version 11.4.7001.0 or higher)
- Microsoft OLE DB Driver for SQL Server (version 18.2.2.0 or higher)

Follow this procedure to create a data source.

To create a data source:

1. Launch the PPM Datasource Management Tool.



2. Click **Add**.
3. In the Add Data Source dialog box, click the General tab and enter or select the values in the **Name**, **Schema**, and **Provider** fields.
4. Click the **Configure** button.
5. In the Data Link Properties dialog box, enter or select values in the appropriate fields on each tab.
6. Click the **Test Connection** button to verify if the connection information is correct.

Note:

- If you are using Oracle ODP.NET as your provider, you must specify the Oracle connection details in the format **ServerName/Instance**. For example, if your Oracle server is named **ServerA** and the Oracle instance is **ORCL**, then your Data Source value would be **ServerA/ORCL**.
- Microsoft made their SQL Server providers to connect only to database servers that are configured with SSL/TLS by default, as using database servers without SSL/TLS poses security risks.

To make SQL Server providers connect to unsecured database servers, the encryption of the data must be disabled when configuring the providers:

- For Microsoft OLE DB Driver 19 for SQL Server, on the Advanced tab, set the **Connection encryption** field to **Optional**.
- For Microsoft OLE DB Driver for SQL Server, on the Connection tab, remove the checkmark in **Use strong encryption for data** option.
- For Microsoft OLE DB Provider for SQL Server or SQL Server Native Client, on the All tab, set the **Use Encryption for Data** field to **False**.
- For SQL Server .NET Framework, on the Advanced tab, set the **Encrypt** field to **False**.

Appendix D: Import a Data Source

Use this procedure to create data source or database connection by importing it.

To import a data source:

1. In the PPM Datasource Management Tool dialog box, click **Import**.
2. In the Import Data Source dialog box, enter the full path and file name of the DATASOURCES.DAT file.

Alternatively, you can click **Browse** to locate the file.

3. Click **OK** to close the Import Data Source dialog box and complete the process.

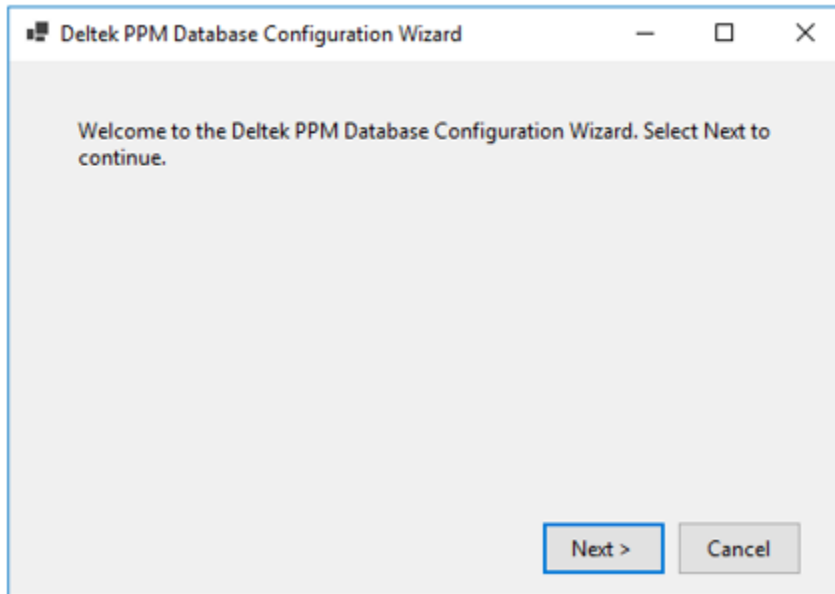
During import, if the data source includes any special characters or spaces, the tool automatically replaces them with an underscore (_).

Example: The data source **PMCompas85Cob85OP87SQL(MAKDBT07)** will be renamed to **PMCompas85Cob85OP87SQL_MAKDBT07_**.

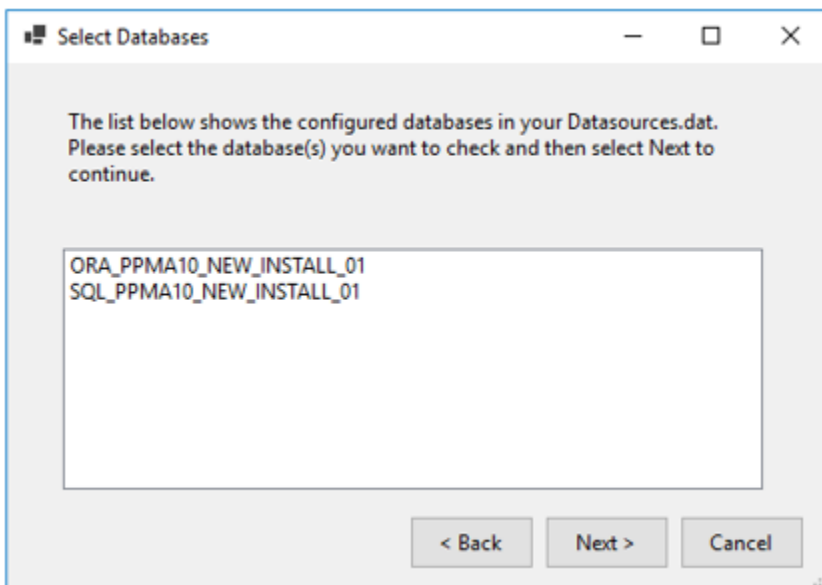
Appendix E: Run Scripts Using the Deltek PPM Database Configuration Wizard

Use the Deltek PPM Database Configuration Wizard to allow users to run PPM Administrator scripts and install PPM Administrator into the selected data sources.

1. On the **Welcome** page of the Deltek PPM Database Configuration Wizard, click **Next**.



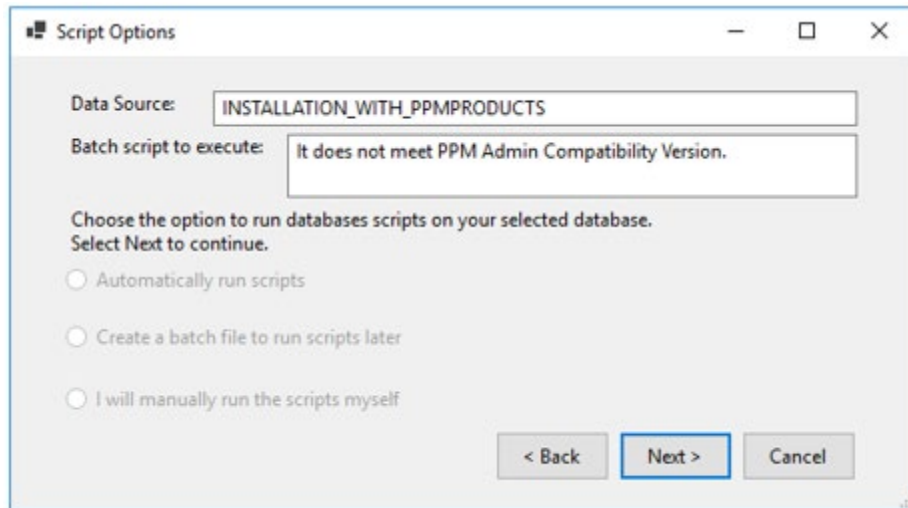
2. On the **Select Database** page, select the database(s) you want to check and click **Next**.



Note: The screenshot above contains example databases only. The page displays the configured databases in **Datasources.dat**. These are the same ones listed in the Deltek PPM Datasource Management Tool.

You need to select at least one database to proceed.

3. On the **Script Options** page, take one of the following actions:
 - If the selected database has no supported PPM products installed, the **Batch script to execute** field displays: "It does not meet PPM Admin Compatibility Version."



Clicking **Next** displays the **Finish** page of the Deltek PPM Database Configuration Wizard.

- If the selected database fully supports PPM Administrator, the **Batch script to execute** field displays: "No Scripts to run. Database is already at the current version."

Clicking **Next** displays the **Preparing Setup** page.

- If the selected database does not yet have PPM Administrator installed, the **Batch script to execute** field displays: "Create batch file script."

You need to select an option to run database scripts on your selected database for the **Next** button to be enabled.

- **Automatically run scripts:** Select this option to automatically create the PPM Administrator database tables during the installation process.
- **Create a batch file to run scripts later:** Select this option to run a batch file named **CreateUpgradeScript_DataSourceName.bat** to create the PPM Administrator database tables. The batch file will contain the database connection information.

The batch file is saved in the same folder as the scripts to be run. For example, it can be found in Database\Scripts\SQLServer\Create or Database\Scripts\Oracle\Create.

- **I will manually run the scripts myself.** Select this option to manually create the PPM Administrator database tables using the scripts.

Proceed to step 4.

Clicking **Next** displays the **Preparing Setup** page of the PPM Administrator InstallShield wizard.

Note: The **Script Options** and **Preparing Setup** pages display depending on how many data sources you select for validation when you click **Next**.

When the setup is completed in the Deltek PPM Database Configuration Wizard, click **Finish**.

Appendix F: Workaround for Installing PPM Administrator on Oracle Data Sources with Windows Authentication

This chapter provides a workaround for installing PPM Administrator when using Oracle data sources configured with Windows Authentication. The process involves creating a temporary Oracle data source with Basic Authentication using the PPM Data Source Management Tool, installing PPM Administrator via the PPM Database Configuration Wizard with this new data source, and then removing the temporary data source after installation.

To install PPM Administrator on an Oracle data source with Windows Authentication

1. In the PPM Data Source Management Tool, select the Oracle data source configured for Windows Authentication and click **Edit**.
2. In the Edit Data Source dialog box, take note of the value of the **Schema** field. This will serve as the **username** for the Oracle data source you will create.
3. Click **Configure** to proceed.
 - Take note of the values of the **Server/host name**, **Port** (if applicable), and **SID** fields. You will use these values when setting up the new Oracle data source.
You will use these values in step 5.
4. Click **Cancel** until you reach the PPM Data Source Management Tool main window.
5. Create a new Oracle data source configured for Basic Authentication.

Attention: Use the schema noted above as the Oracle username and provide the password for that user. Use the server/host name, port and SID that identifies the Oracle database instance. For more information on how to create a data source, see the [Appendix C: Create a Data Source](#) chapter in this document.

6. In the PPM Database Configuration Wizard, select the new Oracle data source and install PPM Administrator.

Attention: For more information, see the [Appendix E: Run Scripts Using the Deltek PPM Database Configuration Wizard](#) chapter in this document.

7. After installing PPM Administrator, open the PPM Data Source Management Tool.
8. In the PPM Data Source Management Tool, select and delete the newly created Oracle data source. This step ensures that the data source does not display in the list of available options on the PPM Administrator login page.

Appendix G: Enable PPM Administrator to Use Data Sources with Basic Authentication

For security reasons, PPM Administrator only allows connections to database servers using Windows Authentication by default. As a result, data sources configured with Basic Authentication are excluded in the list on the Login page.

To enable data sources with Basic Authentication:

1. Open C:\Program Files\Deltek\PPMAdministrator\Web\PPMAPI\config.dat.

Note: Make sure you have read and write permissions to edit the file.

2. In the config.dat file, find the line **RequireWinAuthForDatabase** and change its value to **0** so it looks like this:

RequireWinAuthForDatabase = 0

3. Save the file.
4. Restart IIS for the changes to take effect.

After restarting IIS, the data sources with Basic Authentication will be included in the selection of data sources on the Login page.

Appendix H: Unlock a Section in IIS

If the page displays an error message like the image displayed below, it means that the section is locked in IIS:

HTTP Error 500.19 - Internal Server Error

The requested page cannot be accessed because the related configuration data for the page is invalid.

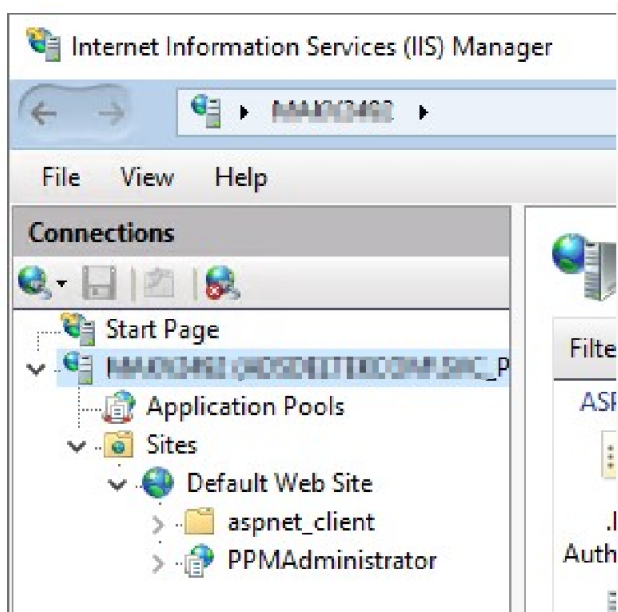
Detailed Error Information:			
Module	AnonymousAuthenticationModule	Requested URL	http://localhost:80/PPMAdministrator/app/default.aspx
Notification	AuthenticateRequest	Physical Path	C:\Program Files\Deltek\PPMAdministrator\Web\app\default.aspx
Handler	PageHandlerFactory-Integrated-4.0	Logon Method	Not yet determined
Error Code	0x80070021	Logon User	Not yet determined
Config Error	This configuration section cannot be used at this path. This happens when the section is locked at a parent level. Locking is either by default (overrideModeDefault="Deny"), or set explicitly by a location tag with overrideMode="Deny" or the legacy allowOverride="false".		
Config File	\\?\C:\inetpub\wwwroot\web.config		

Config Source:	
14:	<authentication>
15:	<anonymousAuthentication />
16:	</authentication>

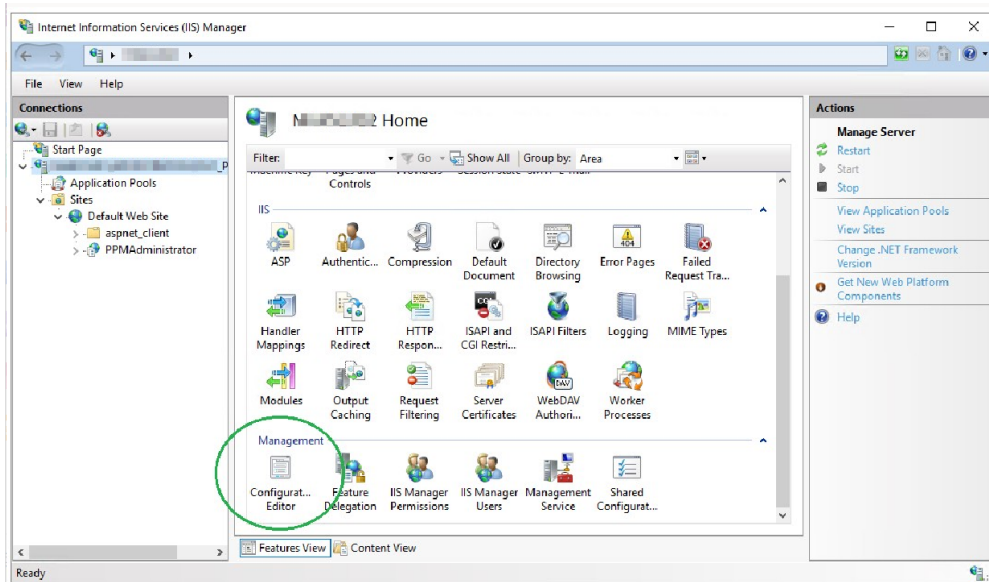
More Information:
This error occurs when there is a problem reading the configuration file for the Web server or Web application. In some cases, the event logs may contain more information about what caused this error. View more information >

To unlock a section in IIS:

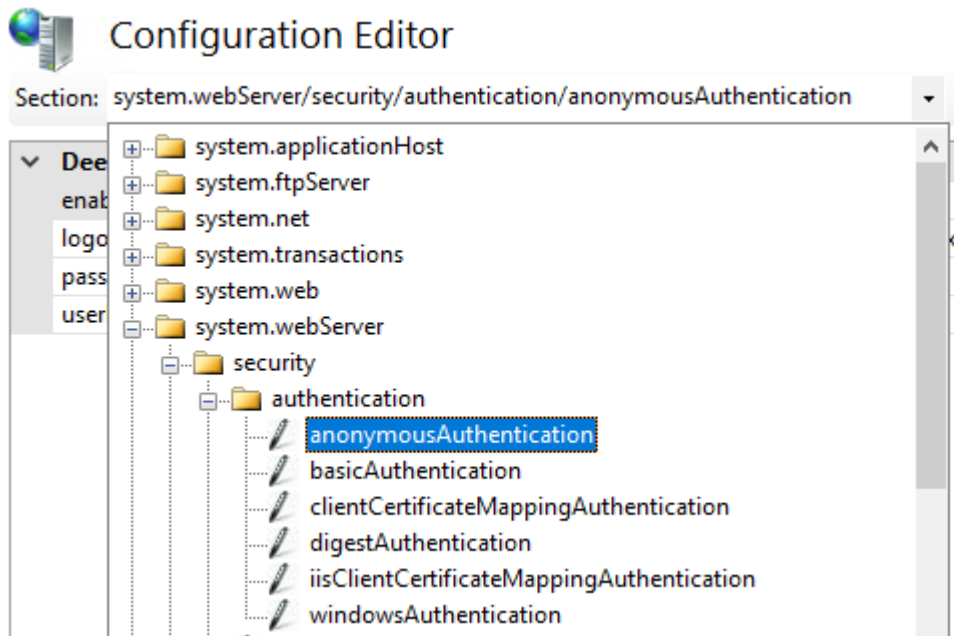
1. Launch Internet Information Service (IIS) Manager.
2. On the left pane, select the root node, which is usually labeled with the computer or server name.



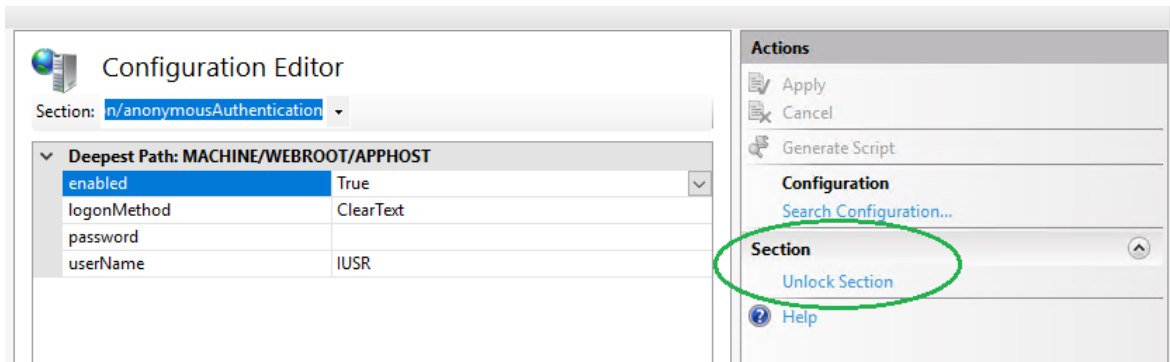
3. On the middle pane, double-click **Configuration Editor**.



In the Configuration Editor, click the **Section** drop-down and select **system.webServer » security » authentication » anonymousAuthentication**.



4. On the right side of the Configuration Editor, under the Actions panel, click **Unlock Section**.



5. In the Configuration Editor, click the **Section** drop-down and select **system.webServer » security » authentication » windowsAuthentication**.
6. On the right side of the Configuration Editor, under the Actions panel, click **Unlock Section**.
7. Restart IIS.

Appendix I: If You Need Assistance

If you need assistance installing, implementing, or using PPM Administrator, Deltek makes a wealth of information and expertise readily available to you.

Customer Services

Deltek has always maintained close relationships with client firms, helping with their problems, listening to their needs, and getting to know their individual business environments. A full range of customer services has grown out of this close contact, including the following:

- Extensive self-support options through the Deltek Support Center
- Phone and email support from Deltek Support Services analysts
- Technical services
- Consulting services
- Custom programming
- Classroom, on-site, and Web-based training

Attention: Find out more about these and other services from the Deltek Support Center.

Deltek Support Center

The Deltek Support Center is a support Web site for Deltek customers who purchase an Ongoing Support Plan (OSP).

The following are some of the many options that the Deltek Support Center provides:

- Search for product documentation, such as release notes, install guides, technical information, online help topics, and white papers
- Ask questions, exchange ideas, and share knowledge with other Deltek customers through the Deltek Support Center Community
- Access Cloud-specific documents and forums
- Download the latest versions of your Deltek products
- Search Deltek's knowledge base
- Submit a support case and check on its progress
- Transfer requested files to a Deltek Support Services analyst
- Subscribe to Deltek communications about your products and services
- Receive alerts of new Deltek releases and hot fixes
- Initiate a Chat to submit a question to a Deltek Support Services analyst online

Attention: For more information regarding Deltek Support Center, refer to the online help available from the Web site.

Access Deltek Support Center

To access the Deltek Support Center:

1. Go to <https://deltek.custhelp.com>.
2. Enter your Deltek Support Center **Username** and **Password**.
3. Click **Login**.

Note: If you forget your username or password, you can click the **Need Help?** button on the login screen for help.

Additional Documentation

The following table lists the Deltek documentation available for this release. Except where noted, all the user guides and quick reference guides listed in this table are available for download from the Deltek Support Center.

Document Name	Description
Deltek PPM Administrator Online Help	This document contains detailed information and instructions on how to use various features of the application.
Deltek PPM Datasource Management Tool Help	This document contains detailed information and instructions on how to use various features of the tool.