


The background of the page features two broad, diagonal stripes. A light blue stripe runs from the top-left corner towards the bottom-right, and a darker blue stripe runs from the bottom-left corner towards the top-right, intersecting the first stripe.

Deltek

# Deltek Costpoint®

New Installation Guide For  
Microsoft SQL Server

**October 22, 2019**



---

While Deltek has attempted to verify that the information in this document is accurate and complete, some typographical or technical errors may exist. The recipient of this document is solely responsible for all decisions relating to or use of the information provided herein.

The information contained in this publication is effective as of the publication date below and is subject to change without notice.

This publication contains proprietary information that is protected by copyright. All rights are reserved. No part of this document may be reproduced or transmitted in any form or by any means, electronic or mechanical, or translated into another language, without the prior written consent of Deltek, Inc.

This edition published October 2019.

© Deltek, Inc.

Deltek's software is also protected by copyright law and constitutes valuable confidential and proprietary information of Deltek, Inc. and its licensors. The Deltek software, and all related documentation, is provided for use only in accordance with the terms of the license agreement. Unauthorized reproduction or distribution of the program or any portion thereof could result in severe civil or criminal penalties.

All trademarks are the property of their respective owners.

---

# Contents

New Installation Checklist .....	1
Database Tier Installation .....	1
Application Tier Installation .....	1
Web Tier Installation (Microsoft IIS).....	1
Using Costpoint 7.1.1.....	1
Post-Installation .....	2
Related Documentation .....	2
Release Notes: .....	2
Entity Relationship Diagrams (ERDs):.....	2
Technical Guides: .....	3
Other Documents:.....	4
New Installation Overview .....	6
Installation Package Contents .....	6
Installation Prerequisites .....	6
Database Tier Installation Prerequisites .....	6
Application Tier Installation Prerequisites.....	7
Costpoint 7.1.1 Server Startup Prerequisites .....	7
Costpoint 7.1.1 Initial Log In Configuration Prerequisites.....	8
Web Tier Installation/Microsoft Internet Information Server (IIS) Configuration Prerequisites .....	8
Installation Process for Costpoint 7.1.1 .....	8
Web Servers Supported In Costpoint 7.1.1 .....	10
Naming Conventions .....	10
Drive Letters.....	10
Directory Names .....	10
Database Names .....	10
Internet Information .....	11
Deltek Software Manager Requirements.....	11
Knowledge Base Documentation.....	11
System Requirements .....	12
Costpoint 7.1.1 Log File Information .....	13
Database Tier Installation .....	15
Before You Start .....	15
Install Database Tier Software .....	15

Enable JDBC Distributed Transactions.....	23
How to Enable JDBC Distributed Transactions and XA using Costpoint Installer for an Instance: .....	23
How to Enable JDBC Distributed Transaction and XA for Remote Database Servers.....	24
How to Enable JDBC Distributed Transaction and XA for SQL Cluster Configuration .....	27
Application Tier Installation .....	29
Before You Start .....	29
Install Application Tier Software .....	29
Add Users to the CostpointToolsGroup.....	36
Before You Start .....	37
Manually Start Costpoint 7.1.1 .....	37
Install Costpoint 7.1.1 Windows Service .....	37
Configure Costpoint 7.1.1 Windows Service .....	38
Web Tier Installation .....	40
Before You Start .....	40
Configure Microsoft IIS Web Server for Costpoint 7.1.1 .....	40
Install Web Tier Software .....	41
Add Users to the CostpointToolsGroup.....	44
Configure Costpoint 7.1.1 IIS Access.....	44
Restart Costpoint 7.1.1 WebLogic Server .....	45
Costpoint 7.1.1 Initial Log In Configuration .....	46
Before You Start .....	46
Costpoint 7.1.1 Printer Configuration .....	46
Set Web Browser Internet Options .....	46
Log In To Costpoint 7.1.1 .....	47
Verify Costpoint 7.1.1 Printer Configuration .....	54
Deploy Costpoint as a Progressive Web App .....	57
Deploy Costpoint PWA on an Android Device.....	57
Deploy Costpoint PWA on an iPhone or iPad .....	58
Deploy Costpoint PWA on a Desktop .....	58
Post-Installation Configuration .....	59
Apply Latest Costpoint 7.1.1 Hot Fixes .....	59
WebLogic Server Configuration .....	59
Start Costpoint 7.1.1 WebLogic Server as a Windows Service.....	59
Start Costpoint 7.1.1 WebLogic Server from the Start Menu .....	59
Start Costpoint 7.1.1 WebLogic Server from the Windows Command Prompt.....	60
Stop Costpoint 7.1.1 WebLogic Server as a Windows Service.....	61


---

Stop Costpoint 7.1.1 WebLogic Server from the Web Browser .....	61
Change CPSUPERUSER User's Password .....	62
Secure Sockets Layer (SSL) Encryption with Costpoint 7.1.1 Implementation .....	67
Costpoint Web's Support for SSL .....	67
Informational Resources for Implementing SSL .....	68
Troubleshooting Instructions .....	68
How to Re-Run a Database Tier Installation that Failed .....	68
Latest Installer Files Download Instructions .....	70

## New Installation Checklist

The following is a checklist of the overall steps needed to install Costpoint 7.1.1. Details for each step are provided on subsequent pages.

Print this checklist and use it as you complete this installation if desired.

Done?	Step	Notes
	<i>Step summary...</i>	<i>Any pertinent notes...</i>
<b>Database Tier Installation</b>		
	1. Install Costpoint Database using Database Tier Installer	
	2. Enable JDBC Distributed Transactions	
<b>Application Tier Installation</b>		
	1. Install Application Tier Software	
	2. Add Users to the CostpointToolsGroup	
	3. Start Costpoint 7.1.1	
	4. Install Costpoint 7.1.1 Windows Service	
	5. Configure Costpoint 7.1.1 Windows Service	
<b>Web Tier Installation (Microsoft IIS)</b>		
	1. Configure Microsoft IIS for Costpoint 7.1.1	
	2. Install Web Tier Software	
	3. Add Users to the CostpointToolsGroup	
	4. Configure Costpoint 7.1.1 IIS Access	
	5. Restart Costpoint 7.1.1 WebLogic Server	
<b>Using Costpoint 7.1.1</b>		
	1. Set Web Browser Internet Options	

## New Installation Checklist

Done?	Step	Notes
	2. Log in to Costpoint 7.1.1	
<a href="#">Post-Installation</a>		
	1. Install Latest Costpoint 7.1.1 Hot Fixes.	

## Related Documentation

The following table lists the additional documentation that downloads along with this release. Except where noted, all the user guides and quick reference guides listed in this table are also available for download from the Deltek Customer Care Connect site.

You will need Adobe Reader 8.0 or higher to view the documents listed in this section.

### Release Notes:

Document Name	Description
Deltek Costpoint 7.1.1 Database Changes	This document describes the database changes between the release of Costpoint 7.0.1 and Costpoint 7.1.1.
Deltek Costpoint 7.1.1 Release Notes Enhancements	<p><b>Major New Features and Enhancements</b> — Click this bookmark to view the major new features and enhancements included in Costpoint 7.1.1.</p> <p><b>De-Supported Applications</b> — Click this bookmark to view the applications that are no longer supported in Costpoint 7.1.1.</p>
Deltek Costpoint 7.1.1 Release Notes Software Issues Resolved	This document describes the issues that were resolved between the release of Costpoint 7.0.1 and Costpoint 7.1.1.
Deltek Costpoint 7.1.1 Release Notes Software Issues Resolved Cumulative Update	This document describes the issues that were resolved in the Costpoint 7.1.1 cumulative update.

### Entity Relationship Diagrams (ERDs):

Document Name	Description
DeltekCostpoint711TransactionSchemaERD.zip	ZIP file containing the ERD for the Deltek Costpoint 7.1.1 Transaction schema. Use <a href="#">index.htm</a> to view the ERD.

Document Name	Description
DeltekCostpoint711SystemSchemaERD.zip	ZIP file containing the ERD for the Deltek Costpoint 7.1.1 System schema. Use <b>index.htm</b> to view the ERD.
DeltekCostpoint711AdminSchemaERD.zip	ZIP file containing the ERD for the Deltek Costpoint 7.1.1 Admin schema. Use <b>index.htm</b> to view the ERD.

## Technical Guides:

Document Name	Description
Deltek Costpoint 7.1.1 Configuration Utility	This document describes how to use the Costpoint Configuration Utility, which helps Costpoint administrators perform the most common configuration tasks.
Deltek Costpoint 7.1.1 Content Management Integration	This document describes how to configure and tune the Costpoint Content Management Integration (CMI) application to provide access to Microsoft SharePoint™, as well as other Content Management Systems (CMS) that are compliant with the Content Management Interoperability Standard (CMIS).
Deltek Costpoint 7.1.1 DB Wizard Utility	This document describes how administrators can use the DB Wizard utility to apply hot fixes and database structure changes to Costpoint installations.
Deltek Costpoint 7.1.1 Deploying Hotfixes	This document describes how to apply hot fixes to Costpoint 7.1.1.
Deltek Costpoint 7.1.1 Deployment Options Technical Overview	This document provides a high level overview of various Costpoint configuration options, including server, database, and security options.
Deltek Costpoint 7.1.1 Integration Overview	This document provides a high level overview of how Costpoint reports, processes, and data can be integrated with third-party applications via Web services.
Deltek Costpoint 7.1.1 Integration Console	This document is a detailed guide to the Costpoint Integration Console, which automates the process of integrating Costpoint reports, processes, and data with third-party applications via Web services.



Document Name	Description
Deltek Costpoint 7.1.1 Message Boards	This document describes how integration between Costpoint and MS Exchange can enable collaboration among Costpoint users as well as between Costpoint and non-Costpoint users. This capability also allows you to link emails with attachments directly to Costpoint documents and view them directly from Costpoint.
Deltek Costpoint 7.1.1 Monitoring Utility	This document describes how to use the Monitoring Utility to diagnose Costpoint configuration problems.
Deltek Costpoint 7.1.1 Performance Optimization	This document contains Costpoint performance tips and tricks, information on the configuration of the Deltek performance lab, as well as a list of optimized applications for the Oracle parallel SQL execution option.
Deltek Costpoint 7.1.1 Post Installation Hardening Guide	This document presents common principles and recommendations that administrators should consider for post-installation hardening of the Costpoint server environment.
Deltek Costpoint 7.1.1 Process Execution Modes	This document describes the many options for executing reports and processes in Costpoint, including using interactive and batch modes and job servers.
Deltek Costpoint 7.1.1 Security	This document describes user authentication and other security safeguards in Costpoint.
Deltek Costpoint 7.1.1 User Migration Utility	This document describes how to migrate users from earlier Costpoint versions to Costpoint 7.1.1.

## Other Documents:

Document Name	Description
Deltek Costpoint 7.1.1 Getting Started Guide	This document describes instructions for accessing Costpoint's applications as well as descriptions of menus, toolbars, and other global features. You will also find information on logging on to Costpoint, accessing the database, printing reports, reviewing online help, and contacting Deltek Customer Care and other client services.

Document Name	Description
Deltek Costpoint 7.1.1 User Interface QRC	This document is a quick reference card which can be kept handy and used for reference as you navigate Costpoint 7.1.1. It describes how to navigate through the application.
Deltek Costpoint 7.1.1 Shortcut Keys Toolbar Icons And Buttons QRC	This document is a quick reference card which can be kept handy and used for reference as you work in Costpoint 7.1.1. It lists the shortcut keys available in Costpoint, as well as the toolbar icons and buttons.
Deltek Costpoint 7.1.1 Views QRC	This document is a quick reference card which can be kept handy and used for reference as you work with the Costpoint 7.1.1. It explains the differences between Table View and Form View.
Deltek Costpoint 7.1.1 Query and Lookup QRC	This document is a quick reference card which can be kept handy and used for reference as you work with the Costpoint 7.1.1. It explains how to use the query and lookup functions in Costpoint,
Deltek Costpoint 7.1.1 Extensibility Designer Coding Guide	This document contains java coding information for Costpoint Extensibility developers.
Deltek Costpoint 7.1.1 Extensibility Designer Quick Start Guide	This document outlines the basic steps for creating and deploying extensibility.
Deltek Costpoint 7.1.1 Extensibility Designer Report Guide	This document describes how to extend a report.
Deltek Costpoint 7.1.1 Extensibility Designer User Guide	This document contains detailed instructions for using the Costpoint Extensibility Designer.
Deltek Costpoint 7.1.1 Screen Customization and Business Logic Extensibility	This document is an overview of Costpoint's screen customization and business logic extensibility features.

## New Installation Overview

This document provides instructions for installing the Deltek Costpoint 7.1.1 software. During the installation process, you will perform the following:

- Ensure that your system meets the installation prerequisites.

**Note:** Please refer to the [Installation Prerequisites](#) and [System Requirements](#) sections for additional information. Also please review the full list of [related documentation](#) prior to installing or upgrading to Costpoint 7.1.1.

- Install the Costpoint 7.1.1 Database Tier software to create your Costpoint 7.1.1 Transaction, System, and Admin databases.
- Install the Costpoint 7.1.1 Application Tier software, which includes both the Oracle WebLogic® Server software and the Costpoint 7.1.1 software.
- Install the Costpoint 7.1.1 Web Tier software to your Internet Information Server, if applicable.
- Install the latest Costpoint 7.1.1 Hot Fixes.

**Note:** If you need help with this installation, please contact Costpoint Technical Support at 877.HLP.PROJ (877-457-7765).

## Installation Package Contents

The Costpoint 7.1.1 installation package contains the following:

- Costpoint 7.1.1 Database Tier installer
- Costpoint 7.1.1 Application Tier installer
- Costpoint 7.1.1 Web Tier installer
- Deltek Costpoint 7.1.1 New Installation Guide for Microsoft SQL Server

## Installation Prerequisites

### Database Tier Installation Prerequisites

Before you start the Database Tier installation process, your database server must meet the following software prerequisite:

Prerequisite Component	Details
Software	<p>All product compatibility information is maintained in the Deltek Product Support Compatibility Matrix available on the Customer Care Support Site <a href="#">here</a>.</p> <p>Please note the database compatibility levels: SQL Server 2016 (130), SQL Server 2014 (120), SQL Server 2012 (110).</p>

Prerequisite Component	Details
Passwords	To run the installation, password is required for Microsoft SQL Server SA user or any user with “sysadmin” privileges.
Firewall Settings	<p>On your Database Server, the Microsoft SQL Server Instance Port (<b>1433</b>) must be open for Inbound and Outbound traffic through your firewall.</p> <p>For a Named Microsoft SQL Server Instance, the following must be met:</p> <ul style="list-style-type: none"> <li>▪ A dedicated port should be configured for the instance and such a port should be open for Inbound and Outbound traffic.</li> <li>▪ SQL Browser Service must be enabled and running.</li> <li>▪ SQL Browser UDP Port (1434) should be open for Inbound and Outbound traffic.</li> </ul> <p>On your Database Server, make sure that <b>Network discovery</b> and <b>file sharing</b> options are switched on.</p>

Close all software applications running on the desktop.

To avoid memory contention, check the memory allocated for SQL Server and make sure the server can allocate at least a minimum of 3 GB.

## Application Tier Installation Prerequisites

Before you start the Application Tier installation process, the application server that will run your WebLogic Server and Costpoint 7.1.1 software must meet the following prerequisites:

Prerequisite Component	Details
Software	All product compatibility information is maintained in the Deltak Product Support Compatibility Matrix available on the Customer Care Support Site <a href="#">here</a> .

## Costpoint 7.1.1 Server Startup Prerequisites

Before you start Costpoint 7.1.1, the following must be met:

Prerequisite Component	Details
Server	<p>On your Database Server, the SQL Server Listener Port <b>1433</b> must be open for Inbound and Outbound traffic through your firewall.</p> <p>On your Database Server, make sure that the <b>Network Discovery</b> and <b>File Sharing</b> options are switched on.</p>

Prerequisite Component	Details
	<p>On your Application Server, the WebLogic Listener Port <b>7009</b> must be open for Inbound and Outbound traffic through your firewall.</p> <p>On your Application Server, make sure that the <b>Network Discovery and File Sharing</b> options are switched on.</p>

## Costpoint 7.1.1 Initial Log In Configuration Prerequisites

Before you can login to Costpoint 7.1.1 your Windows client computer must meet the following requirements:

Prerequisite Component	Details
Software	<p>All product compatibility information is maintained in the Deltek Product Support Compatibility Matrix available on the Customer Care Support Site <a href="#">here</a>.</p> <p>Adobe Reader 8.0 or higher. This is required only for users who want to print Costpoint 7.1.1 reports in PDF format. Make sure that you select the <b>Display PDF in browser</b> option under the In the Preference settings for Adobe Acrobat Reader to avoid pulling up a blank browser screen when printing in PDF format.</p>

## Web Tier Installation/Microsoft Internet Information Server (IIS) Configuration Prerequisites

The Web server that will host your Internet Information Server software must meet the following prerequisites:

Prerequisite Component	Details
Software	<p>All product compatibility information is maintained in the Deltek Product Support Compatibility Matrix available on the Customer Care Support Site <a href="#">here</a>.</p> <p>Microsoft Internet Information Server 7.0.</p>

## Installation Process for Costpoint 7.1.1

The Costpoint 7.1.1 installation process incorporates the following steps:

Component	Change Details
Database Tier Installation	<p>The Database Tier installer automatically creates the following, user defined, schemas/users:</p> <ul style="list-style-type: none"> <li>Transaction Schema (DELTEK)</li> </ul>

Component	Change Details
	<ul style="list-style-type: none"> <li>Admin Schema (CPADMIN)</li> <li>System Schema (CPSYSTEM)</li> <li>Link User (CPLINK_USER)</li> </ul>
Application Tier Installation	<p>The Install function in the Application Tier now automatically installs all necessary software and handles all configurations.</p> <p>The Application Tier installer automatically performs all the following actions:</p> <ul style="list-style-type: none"> <li>Extracting JDK</li> <li>Installing WebLogic</li> <li>Extracting BIRT Lib Files</li> <li>Extracting App Tier Class Files</li> <li>Updating Config Files</li> <li>Encrypting Passwords</li> <li>Running LinkViews</li> <li>Syncing Sys Settings Table</li> <li>Applying License</li> <li>Migrating Org Security Application Modules</li> <li>Creating Demo License</li> <li>Extracting HelpFiles</li> <li>Creating Shortcuts</li> </ul> <p>The Application Tier installer creates a <b>CostpointToolsGroup</b> with the following Sharing and Security permissions:</p> <ul style="list-style-type: none"> <li>Full Sharing and Security Permissions on your Costpoint 7.1.1 Deltek directory (C:\Deltek)</li> <li>Full Security Permissions on your WebLogic directory (C:\Oracle\Middleware12.1.3)</li> </ul>
Web Tier Installation	<p>The Install function in the Web Tier now automatically installs all necessary software and handles all configurations.</p> <p>The Web Tier installer automatically perform all of following actions:</p> <ul style="list-style-type: none"> <li>Extracting HelpFiles</li> <li>Resetting Internet Information Server</li> </ul> <p>The Web Tier installer creates a <b>CostpointToolsGroup</b> with the following Sharing and Security permissions:</p> <ul style="list-style-type: none"> <li>Full Sharing and Security Permissions on the folder containing your Costpoint 7.1.1 DEWebApp directory (C:\Deltek\Costpoint or C:\Deltek\Costpoint\70\applications)</li> </ul>

## Web Servers Supported In Costpoint 7.1.1

The Costpoint 7.1.1 system supports the following Web servers only:

- Microsoft Internet Information Server
- Oracle's WebLogic Web server

## Naming Conventions

The naming conventions specified in this section are used in all installation instructions detailed in this upgrade installation guide.

### Drive Letters

The table below lists the drive letters used in the installation instructions:

Drive	Description
C:	The drive where the Costpoint 7.1.1 software is installed.

### Directory Names

The table below lists the directory names used in the installation instructions:

Directory Name	Description
ORACLE/MIDDLEWARE12.1.3	The name of the directory where the Oracle WebLogic software is installed.
DELTEK	The name of the directory where the Costpoint 7.1.1 software is installed.

### Database Names

Deltek recommends creating the three Costpoint schemas in one SQL Server database. Clients are free to choose the database name:

Database Name	Description
DELTEKCP	The name of your Costpoint 7.1.1 database. This database includes the Transaction, System, and Admin functions.

Optionally, the table below lists database names used for each of the Costpoint functions respectively:

Database Name	Description
DELTEKCP	The name of your Costpoint Transaction database.
CPSYSTEM	The name of the Costpoint System database.

Database Name	Description
CPADMIN	The name of the Costpoint Admin database.

## Internet Information

Software installations, installation instructions, technical guides, and release notes are available for download from the Deltek Software Manager (DSM). All future releases of Costpoint 7.1.1 are also downloaded from DSM.

DSM is the sole download source for hotfix files. Deltek Knowledge Base articles provide an explanation of the fixes and contain links to DSM for retrieval of the actual files.

## Deltek Software Manager Requirements

You can run DSM from any desktop. It does not need run from Deltek application servers.

In order to run DSM, you must meet the following requirements:

- Windows XP or later
- Microsoft .NET Framework 3.5 SP1 (3.5.1)

The following Deltek Knowledge Base article contains a download link to the framework. It also has examples of what you may see if you do not have the framework installed:

[https://deltek.custhelp.com/app/answers/detail/a\\_id/52469](https://deltek.custhelp.com/app/answers/detail/a_id/52469)

**Note:** Refer to the [DeltekSoftwareManager.pdf](#) to learn more about DSM and how it works.

## DSM Documentation and Troubleshooting

- To view the online help for Deltek Software Manager, click [here](#).
- To view a tutorial on how to use Deltek Software Manager, click [here](#).
- To view more information on troubleshooting Deltek Software Manager, click [here](#).

**Note:** The above troubleshooting link will only work if you are logged into Deltek Customer Care Connect.

## Knowledge Base Documentation

To view Knowledge Base articles, complete the following steps:

1. Go to <http://www.deltek.com> and click **Support Login**.
2. Enter your logon credentials in the following fields, and click **Log In**:

Field Name	Description
<b>Username</b>	Your Support user name
<b>Password</b>	Your Support user password.



If you have forgotten your username or password, click **Account Assistance**.

If you have forgotten your username, enter your email address and click **Email My Username**.

If you have forgotten your password, enter your username and click **Reset My Password**.

3. On the Deltek Support Home Screen, click the Knowledge Center tab, and complete the following fields:

Field Name	Description
<b>Refine by Product</b>	Select Costpoint from the drop-down list.
<b>Refine by Category/Version</b>	Expand Service Pack / Hot Fix from the drop-down list and select <b>7.1.1</b> .
<b>Search Type</b>	Use the default value, Phrases, or select your preferred search type from the drop-down list.
<b>Search by Keyword</b>	Enter the specific text you are looking for or leave blank to return all records for this version.

4. Click **Search**.
5. On the search results screen, perform the following actions:
  - In the **Summary** column, click the link for the desired correction.
  - When the desired correction loads, click the links in the **Answers** section to download the files.

## System Requirements

The Costpoint 7.1.1 system uses the following components:

- **Database Tier** – SQL Server
- **Application Tier** – with integrated WebLogic Server
- **Browser Client** – Internet Explorer, Chrome, Firefox, Safari
- **Web Tier** – Microsoft Internet Information Server (optional)
- All product compatibility information is maintained in the Deltek Product Support Compatibility Matrix available on the Customer Care Support site [here](#).

**Note:** For the Costpoint system to function properly, the system clocks on your WebLogic application server and the database server that hosts your Costpoint databases must be synchronized with each other. Failure to synchronize your system clocks may result in login and other system problems.

**Note:** A hardware recommendations document should have previously been distributed to you. For future releases of Costpoint, hardware recommendations will be supplied via a Customer Care **Knowledge Base** article.

For the most current hardware and software requirements, please refer to the Knowledge Base article containing the Compatibility Matrix:

- [https://deltek.custhelp.com/app/answers/detail/a\\_id/38499](https://deltek.custhelp.com/app/answers/detail/a_id/38499)
- <https://deltek.custhelp.com/ci/fattach/get/1072689/0/filename/DeltekProductSupportCompatibilityMatrix.pdf>

## Costpoint 7.1.1 Log File Information

The table below provides information on the log files used by the Costpoint 7.1.1 system. All of these log files are located on the Application Server under the C:\Deltek\Costpoint\71\logs folder.

File Name	Description
DEServer.log	This log file is maintained by the WebLogic server instance. In a clustered environment each server will write to separate file and file name matches the server name. The log records server specific events such as the startup and shutdown of servers, the deployment of new applications, or the failure of one or more subsystems. The messages include information about the time and date of the event as well as the ID of the user who initiated the event.
CP_DBConn_DEServer.log	This file lists the activate connections uses by the product at given time. To enable this logging set <SYSTEMNAME>.logDBConnectionProfile = true in enterprise properties. In a clustered environment each server will write to a separate log file and name the server will determine the name of the log file. CP_DBConn_<Server>.log
CP_DEServer.log	This log file contains application specific information such as performance, security, and errors encountered while running a Costpoint application. Each server will write to a separate log file and name the server will determine the name of the log file. CP_<Server>.log.
CP_Security_DEServer.log	This file captures messages generated by Costpoint Web security module. Messages such as invalid login attempt either due to user id, password or insufficient parameters, de-activated user account are captured here. In a clustered environment each server will write to a separate log file and name the server will determine the name of the log file. CP_Security_<Server>.log.
delteke.log	This log file contains information pertained to the entire domain. It consolidates log records from all application logs and a subset of events recorded in all server logs. All the information gathered is written into a single file.  Note: Not all log messages are written into domain. Only those messages that match the defined severity are consolidated.

File Name	Description
service.log	<p>This log file contains messages generated by Costpoint Web windows service. It helps in troubleshooting issues related to service startup, which usually occur during the initial configuration stages. In addition to service related messages, it also contains most of the information that is captured in the DEServer.log. So, after the initially startup issues are sorted out, Deltek suggests disabling this log by editing the <b>InstallCPWebasService.cmd</b> (C:\Deltek\Costpoint\71\bin folder) and removing the occurrence of "<b>-log:%CP_ROOT%\logs\service.log</b>". If you remove this after installing the service, you will need to uninstall and reinstall the service for the changes to take effect.</p>

## Database Tier Installation

This section provides instructions and recommendations for creating your Costpoint 7.1.1 Transaction, System, and Admin database(s) and the corresponding Costpoint users and schemas. Deltek recommends using a single database to host all the Costpoint schemas.

During this installation process, you will install the Costpoint 7.1.1 Database Tier software and automatically perform the following:

- Create and populate a Costpoint 7.1.1 Transaction database schema to store transaction data.
- Create and populate a Costpoint 7.1.1 System database schema to store meta data.
- Create and populate a Costpoint 7.1.1 Admin database schema to store system and security information.

**Note:** The Costpoint Database Tier installer creates a SQL Server database user and corresponding schema with the same name.

### Before You Start

Make sure that you meet all [Database Tier Installation Prerequisites](#).

### Install Database Tier Software

The steps to install the Costpoint 7.1.1 Database Tier software as well as create the Transaction, System, and Admin databases are detailed in this section.

You must perform this step on your database server.

**Note:** For SQL Server cluster installations, the install directory must be a local drive as opposed to a shared drive.

You must have Internet access on the machine where the Costpoint 7.1.1 installer is invoked in order to download the latest DeltekCostpoint711DatabaseUpgradeFiles.exe and DeltekCostpointRequirementsINI.exe files automatically.

The DeltekCostpoint711DatabaseUpgradeFiles.exe contains the latest database patch rollback scripts as well as the latest list of Costpoint 7.0.1 database patches that have been worked into the upgrade. The DeltekCostpointRequirementsINI.exe contains the latest OS platforms and database versions supported. These files are automatically downloaded when you launch the Database Tier installation, assuming that your database server has Internet access.

**Note:** The Deltek product installers contain functionality which enables them to dynamically download configuration files and patch rollback scripts when the product installers are executed from the Deltek Software Manager server. To improve security, these connections have been modified to require communication over HTTPS.

If your database server does not have internet access, you will need to perform the steps in the [Latest Upgrade Files Download](#) section of this document before you run the DeltekCostpoint711DatabaseTier.exe file.

**To install the Database Tier software, complete the following steps:**

1. Run the **DeltekCostpoint711DatabaseTier.exe** file to launch the Costpoint 7.1.1 Database Tier installation program.

**Note:** Due to enhanced security in Microsoft Windows Server, it is advised that you use the **Run as Administrator** option when launching installation files, even if you are logged in as a user with local administrative rights. To **Run as Administrator**, right-click the **DeltekCostpoint711DatabaseTier.exe** file in Windows Explorer and select **Run as Administrator**.

2. On the Welcome to the InstallShield Wizard for Costpoint screen, click **Next >**.
3. On the License Agreement screen, review the license agreement, select **I accept the terms of the license agreement**, and click **Next >**.
4. On the Choose Costpoint Database Scripts Directory screen, click **Browse** to navigate to an installation location for the Costpoint 7.1.1 Database Tier software.

The default installation location is **C:\Program Files\Deltek\Costpoint\7.1.1** (recommended). Click **Next >**.

5. On the Select Deltek Costpoint Install Type screen, select **New Install**, and click **Next >**.
6. On the Select Database Platform screen, select **Microsoft SQL Server**, and click **Next >**.
7. On the Deltek Costpoint 7.1.1 Transaction SQL Server Database Information screen, complete the following fields.

Field Name	Action
<b>IP Address or Hostname</b>	<p>Enter the IP address (for example, <b>10.2.2.154</b>) or hostname (for example, <b>dbsvr01</b>) of your Costpoint 7.1.1 Transaction (DELTEKCP) database server. The default value is your computer name.</p> <p>The values for the IP Address or Hostname cannot be <b>127.0.1.0.1</b> or <b>localhost</b>.</p> <p>For SQL Cluster installations, you must specify the SQL Cluster IP Address or SQL Cluster Hostname.</p>
<b>Port</b>	<p>Enter the SQL Server TCP port the Costpoint database server. The default port for SQL Server is <b>1433</b>.</p> <p>Currently, this installer will allow database installations to connect to a SQL Server DEFAULT instance over port 1433 only. Use of non-default ports will be addressed in a future release.</p>
<b>Database Name</b>	<p>Enter the name of your Costpoint database. The default value is <b>DELTEKCP</b>. In addition to standard alphanumeric characters, the following special characters are also supported:</p> <p><b>\$ - _</b></p>
<b>Instance Name</b>	<p>Enter the name of your Costpoint database instance. The default value is <b>LOCAL</b>. In addition to standard alphanumeric characters, the following special characters are also supported:</p>

Field Name	Action
	\$ - _
<b>User Name</b>	Enter the name of your Transaction user account. The default is <b>DELTEK</b> . The Costpoint Installer creates a SQL Server schema with the same name as the user name. In addition to standard alphanumeric characters, the following special characters are also supported: \$ - _
<b>Password</b>	Enter the password for your Transaction user account. In addition to standard alphanumeric characters, the following special characters are also supported: ' ~ # \$ ^ & ( ) - _ + = , .
<b>Confirm Password</b>	Re-enter the password for your Transaction user account. In addition to standard alphanumeric characters, the following special characters are also supported: ' ~ # \$ ^ & ( ) - _ + = , .
<b>SA User Name</b>	Enter the name of your Microsoft SQL Server SA user. The default is <b>sa</b> . If a user with "sysadmin" privileges is available, that user can alternatively be used. In addition to standard alphanumeric characters, the following special characters are also supported: \$ - _
<b>SA User Password</b>	Enter the password for your Microsoft SQL Server SA user. In addition to standard alphanumeric characters, the following special characters are also supported: ' ~ # \$ ^ & ( ) - _ + = , .

8. Click **Test Connection**.

If you have entered the proper database connection information, a message similar to the following is displayed:

"DELTEKCP database and DELTEK user will be created. Click Next."

If this message does not display, correct the connection information, and click **Test Connection** again.

9. After receiving the message, click **Next >**.

10. On the Deltek Costpoint 7.1.1 Admin SQL Server Database Information screen, complete the following fields.

Field Name	Action
<b>IP Address or Hostname</b>	Enter the IP address (for example, <b>10.2.2.154</b> ) or hostname (for example, <b>dbsvr01</b> ) of your Costpoint 7.1.1 Admin (CPADMIN) database server. The default value is your computer name.

Field Name	Action
	<p>The value entered in the <b>IP Address</b> or <b>Hostname</b> field cannot be <b>127.0.1.0.1</b> or <b>localhost</b>.</p> <p>For RAC installations, you must specify the IP Address or Hostname of one of the instances. Do not use the Virtual IP Address.</p>
<b>Port</b>	<p>Enter the SQL Server TCP port the Costpoint database server. The default port for SQL Server is <b>1433</b>.</p> <p>Currently, this installer will allow database installations to connect to a SQL Server DEFAULT instance over port 1433 only. Use of non-default ports will be addressed in a future release.</p>
<b>Database Name</b>	<p>Enter the name of your Costpoint database. The default value is <b>CPADMIN</b>. Deltak recommends using the same database you used for your transaction database (i.e., <b>DELTEKCP</b>). Optionally, clients may use a new database name (i.e., <b>CPADMIN</b>). In addition to standard alphanumeric characters, the following special characters are also supported:</p> <p><b>\$ - _</b></p>
<b>Instance Name</b>	<p>Enter the name of your Costpoint database instance. The default value is <b>LOCAL</b>. In addition to standard alphanumeric characters, the following special characters are also supported:</p> <p><b>\$ - _</b></p>
<b>User Name</b>	<p>Enter the name of your Admin user account. The default is <b>CPADMIN</b>. The Costpoint Installer creates a SQL Server schema with the same name as the user name. In addition to standard alphanumeric characters, the following special characters are also supported:</p> <p><b>\$ - _</b></p>
<b>Password</b>	<p>Enter the password for your Admin user account. In addition to standard alphanumeric characters, the following special characters are also supported:</p> <p><b>' ~ # \$ ^ &amp; ( ) - _ + = , .</b></p>
<b>Confirm Password</b>	<p>Re-enter the password for your Admin user account. In addition to standard alphanumeric characters, the following special characters are also supported:</p> <p><b>' ~ # \$ ^ &amp; ( ) - _ + = , .</b></p>
<b>SA User Name</b>	<p>Enter the name of your Microsoft SQL Server SA user. The default is <b>sa</b>. If a user with "sysadmin" privileges is available, that user can alternatively be used. In addition to standard alphanumeric characters, the following special characters are also supported:</p> <p><b>\$ - _</b></p>

Field Name	Action
<b>SA User Password</b>	Enter the password for your Microsoft SQL Server SA user. In addition to standard alphanumeric characters, the following special characters are also supported:  ‘ ~ # \$ ^ & ( ) - _ + = , .

11. Click **Test Connection**.

If you have entered the proper database connection information, a message similar to the following is displayed:

“CPADMIN database and CPADMIN user will be created. Click Next.”

If the message does not display, correct the connection information, and click **Test Connection** again.

12. After receiving the message, click **Next >**.

13. On the Deltek Costpoint 7.1.1 System SQL Server Database Information screen, complete the following fields.

Field Name	Action
<b>IP Address or Hostname</b>	Enter the IP address (for example, <b>10.2.2.154</b> ) or hostname (for example, <b>dbsvr01</b> ) of your Costpoint 7.1.1 Admin (CPADMIN) database server. The default value is your computer name.  The value entered in the <b>IP Address</b> or <b>Hostname</b> field cannot be <b>127.0.1.0.1</b> or <b>localhost</b> .  For RAC installations, you must specify the IP Address or Hostname of one of the instances. Do not use the Virtual IP Address.
<b>Port</b>	Enter the SQL Server TCP port the Costpoint database server. The default port for SQL Server is <b>1433</b> .  Currently, this installer will allow database installations to connect to a SQL Server DEFAULT instance over port 1433 only. Use of non-default ports will be addressed in a future release.
<b>Database Name</b>	Enter the name of your Costpoint database. The default value is <b>CPSYSTEM</b> . Deltek recommends using the same database you used for your transaction database (i.e., <b>DELTEKCP</b> ). Optionally, clients may use a new database name (i.e., <b>CPYSTEM</b> ). In addition to standard alphanumeric characters, the following special characters are also supported:  \$ - _
<b>Instance Name</b>	Enter the name of your Costpoint database instance. The default value is <b>LOCAL</b> . In addition to standard alphanumeric characters, the following special characters are also supported:  \$ - _



Field Name	Action
<b>User Name</b>	Enter the name of your System user account. The default is <b>CPSYSTEM</b> . The Costpoint Installer creates a SQL Server schema with the same name as the user name. In addition to standard alphanumeric characters, the following special characters are also supported:  \$ - _
<b>Password</b>	Enter the password for your System user account. In addition to standard alphanumeric characters, the following special characters are also supported:  ' ~ # \$ ^ & ( ) - _ + = , .
<b>Confirm Password</b>	Re-enter the password for your System user account. In addition to standard alphanumeric characters, the following special characters are also supported:  ' ~ # \$ ^ & ( ) - _ + = , .
<b>SA User Name</b>	Enter the name of your Microsoft SQL Server SA user. The default is <b>sa</b> . If a user with "sysadmin" privileges is available, that user can alternatively be used. In addition to standard alphanumeric characters, the following special characters are also supported:  \$ - _
<b>SA User Password</b>	Enter the password for your Microsoft SQL Server SA user. In addition to standard alphanumeric characters, the following special characters are also supported:  ' ~ # \$ ^ & ( ) - _ + = , .

14. Click **Test Connection**.

If you have entered the proper database connection information, a message similar to the following is displayed:

"CPSYSTEM database and CPSYSTEM user will be created. Click Next."

If the message does not display, correct the connection information, and click **Test Connection** again.

15. On the Deltek Costpoint 7.1.1 Link User Information screen, complete the following fields:

Field Name	Action
<b>User Name</b>	Enter the name of your LINK user account. The default value is <b>CPLINK_USER</b> . The Link user name must be unique for each and every Costpoint system you configure. In addition to standard alphanumeric characters, the following special characters are also supported:  \$ - _

Field Name	Action
<b>Password</b>	Enter the password for your LINK user account. In addition to standard alphanumeric characters, the following special characters are also supported:  ' ~ # \$ ^ & ( ) - _ + = , .
<b>Confirm Password</b>	Re-enter the password for your LINK user account. In addition to standard alphanumeric characters, the following special characters are also supported:  ' ~ # \$ ^ & ( ) - _ + = , .

16. Click **Test Connection**.

If you have entered the proper database connection information, a message similar to the following is displayed:

"User CPLINK\_USER will be created. Click Next."

If the message does not display, correct the connection information, and click **Test Connection** again.

17. After receiving the message, click **Next >**.

18. On the Pre-Installation Summary screen, review the installation parameters you have selected:

- If you want to change any settings, click **< Back** to go back and make the necessary changes.
- If you are satisfied with these settings, click **Install >** to begin the installation.

Once initiated, the installation process will commence and create objects needed for Costpoint 7.1.1. Please do not interrupt the process. A Windows Command Prompt will appear on your screen that displays the scripts that are being executed.

The installation will perform the scenarios detailed in the [Installation Process for Costpoint 7.1.1](#) section of this document. The installation process will stop if any errors are encountered. If any errors occur during the installation, please refer to the [Troubleshooting Instructions](#) section of this document.

19. On the InstallShield Wizard Complete screen, select the **Yes, I want to view the log file** check box to open the DeltekCostpoint711DatabaseTierInstallLog\_<date>\_<time>.txt file from the C:\Program Files\Deltek\Costpoint\7.1.1\Logs directory.

This check box is selected by default.

20. Click **Finish** to exit the installation.

21. When the DeltekCostpoint711DatabaseTierInstallLog\_<date>\_<time>.txt file opens, search for the following keywords:

- **"Error"** – Report any search results to Deltek Costpoint Technical Support. You can ignore **"DBCC execution completed. If DBCC printed error messages, contact your system administrator."** search results.
- **"Database Installation For New Costpoint 7.1.1 TRANSACTION Completed Successfully"** and then the line **"\$DBSUCCESS=TRUE"**.
- **"Database Installation For New Costpoint 7.1.1 ADMIN Completed Successfully"** and then the line **"\$DBSUCCESS=TRUE"**.

- **“Database Installation For New Costpoint 7.1.1 SYSTEM Completed Successfully”** and then the line **“\$DBSUCCESS=TRUE”**.

Finding the three items listed above indicates that you have successfully installed the Costpoint 7.1.1 Database Tier software and that you have created all of your users (schemas).

Make sure that the default SQL Server Port, **1433**, is open for Inbound and Outbound traffic through your firewall. Also, make sure that Network Discovery and File Sharing options are switched on.

## Enable JDBC Distributed Transactions

Please follow the configuration and setup instructions based on your implementation:

1. If the installer is executed on the database server and all user(s)/schema(s) (TRANSACTION, SYSTEM (Meta) and ADMIN) were created on a single instance you are not required to perform any additional steps to enable distributed transactions. All required steps were performed during Costpoint Database Tier installation. This is the most common and simple implementation for most clients and can proceed to application tier installation.
2. If the installer is executed on the database server with database(s)/user(s)/schema(s) configured across different instances within the same server, the following set of actions as to be performed for each instances where Costpoint schema(s)/database(s) are configured. Please follow the steps documented under "How to enable JDBC distributed transactions and XA using Costpoint Installer for an instance."
3. If the installer is executed from an alternative database server or from a client connectivity tools desktop with the actual databases residing remotely on a database server, please follow the steps documented under "How to enable JDBC distributed transactions and XA using Costpoint Installer for an instance."
4. If Costpoint is setup across different database servers and instances with each databases remotely configured for TRANSACTION, SYSTEM (Meta) and ADMIN, please follow the steps documented under "How to enable JDBC distributed transaction and XA for remote database servers."
5. If Costpoint is setup using SQL Cluster configuration, please follow the steps documented under "How to enable JDBC distributed transaction and XA for SQL Cluster Configuration."

## How to Enable JDBC Distributed Transactions and XA using Costpoint Installer for an Instance:

1. Create a backup of your Microsoft SQL Server master database.
2. Copy the DeltekCostpoint711DatabaseTier.exe installation file to this database server where Costpoint databases are created.
3. Run the **DeltekCostpoint711DatabaseTier.exe /enableXA** command to launch the Costpoint Database Tier enable XA program.
4. On the Microsoft SQL Server for Deltek Costpoint 7.1 Database Information screen, complete the following fields.

Field Name	Action
<b>IP Address or Hostname</b>	<p>Enter the IP address (for example, <b>10.2.2.154</b>) or hostname (for example, <b>dbsvr01</b>) of your Costpoint 7.1.1 DELTEKCP/CPSYSTEM/CPADMIN database server. The default value is your computer name.</p> <p>The value entered in the <b>IP Address</b> or <b>Hostname</b> field cannot be <b>127.0.1.0.1</b> or <b>localhost</b>.</p> <p>For SQL Cluster installations, you must specify the SQL Cluster Hostname.</p>

Field Name	Action
<b>Port</b>	Enter the port that your Costpoint 7.1.1 database server software uses to listen for requests. The default port for Microsoft SQL Server is <b>1433</b> .
<b>Instance Name</b>	Enter the name of your Costpoint 7.1.1 database instance used during new install setup. The default value is <b>LOCAL</b> . In addition to standard alphanumeric characters, the following special characters are also supported: \$ - _
<b>SA User</b>	Enter the name of your Microsoft SQL Server SA user. The default is <b>sa</b> . In addition to standard alphanumeric characters, the following special characters are also supported: \$ - _ Note: If a user with "sysadmin" privileges is available, that user can alternatively be used.
<b>SA Password</b>	Enter the password for your Microsoft SQL Server SA user. In addition to standard alphanumeric characters, the following special characters are also supported: ' ~ # \$ ^ & ( ) - _ + = , .

- Click **Test Connection**.

If you have entered the proper database connection information, the following message displays:  
"Connection Successful. Click Next."

If this message does not display, correct the information entered, and click **Test Connection** again.

- After receiving the confirmation message, click **Next >** to begin the installation process.

The Restarting the Distributed Transaction Coordinator (MSDTC) Service window will display as part of the installation process.

If any errors occur during this step, please call Deltek Technical Support.

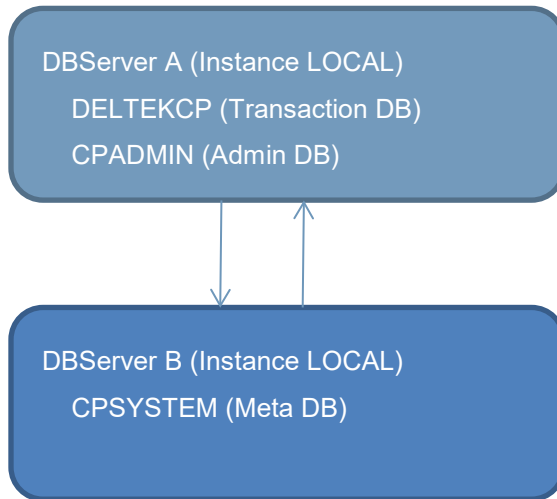
- Click **OK** when the following message displays: "Successfully configured XA transactions."

**Note:** If your Costpoint 7.1.1 TRANSACTION, SYSTEM, and ADMIN databases reside on different servers, you must perform all of the actions in this step against each of the other servers.

## How to Enable JDBC Distributed Transaction and XA for Remote Database Servers

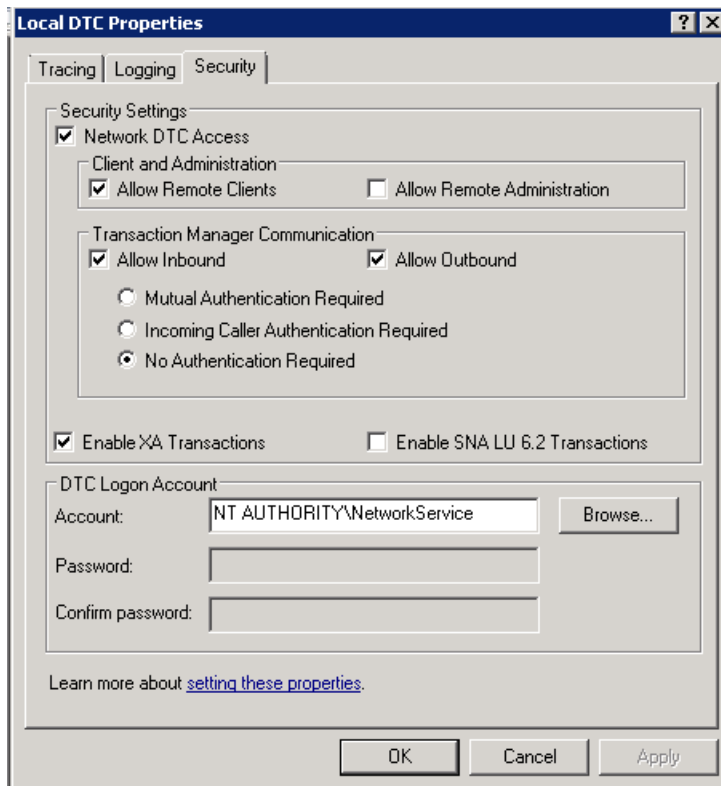
If your Costpoint TRANSACTION, SYSTEM, and ADMIN databases reside on different database servers, you must perform this step in each of the servers.

An example for this configuration is shown below:



Based on the configuration above, all steps documented to enable distributed transaction should be done on both Server A and Server B.

1. Perform this step for the database instance using the instructions on “How to enable JDBC distributed transactions and XA using Costpoint Installer for an instance.”
2. The sequence of steps to open Component Services on your server might be different based on your Windows OS version.
3. On the left navigator tree, go to **Component Services » Computers » My Computer » Distributed Transaction Coordinator**.
4. Right-click **Local DTC**, and click **Properties** on the shortcut menu.
5. Click the Security tab.
6. Perform the following:
  - Select **Network DTC Access** under **Security Settings**.
  - Select **Allow Remote Clients** under **Client and Administration**.
  - Select **Allow Inbound and Allow Outbound** under **Transaction Manager Communication**.
  - Select the **No Authentication Required** option.
  - Select **XA Transactions**.
7. Click **Apply**.  
The following message displays:  
“The MSDTC Service will be stopped and restarted. All dependent services will be stopped. Applications using MSDTC may need to be restarted to use the new settings”.
8. Click **Yes**.  
The following message displays: “The MSDTC service has been restarted.”
9. Click **OK**.  
Your screen should look similar to the following.

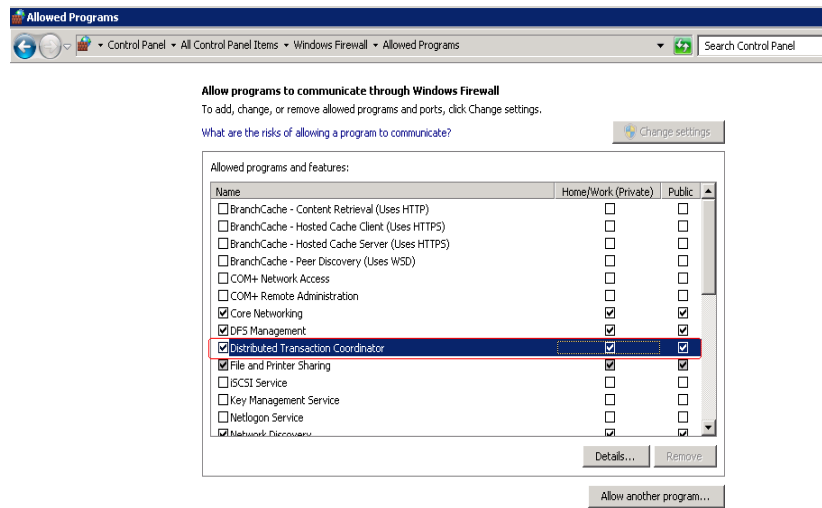


**Note:** For DTC to function correctly, each of the hosts participating should be resolvable by NetBIOS name and each remote host should be reachable by name. This function will not work if the host server is configured only by IP address (as in many VM test deployments). In such cases, either have your host added to the IP/hostname mappings in your “c:\Windows\System32\drivers\etc\hosts” file or if in a domain, add DNS aliases.

10. If you database server is configured for Windows Firewall, for DTC to function, follow the necessary firewall settings for MSDTC program.
  - a. Click **Start » Control Panel**.
  - b. In the search box, enter **firewall**, and click **Windows Firewall**.
  - c. In the left pane, click **Allow a program or feature through Windows Firewall**.
  - d. Click **Change settings**.  
If you're prompted for an administrator password or confirmation, enter the password or provide confirmation.
  - e. Select the check box next to **Distributed Transaction Coordinator** for both **Private** and **Public**, and click **OK**.

## Enable JDBC Distributed Transactions

A sample selection of firewall setting for DTC program is shown below:



11. Reboot the server.
12. Repeat steps 1 through 4 for each of the servers.

In the sample configuration, these steps would be repeated for “DBServer A” and “DBServer B.”

13. Proceed to “Application Tier Installation” section.

## How to Enable JDBC Distributed Transaction and XA for SQL Cluster Configuration

If you’re Costpoint TRANSACTION, SYSTEM, and ADMIN databases reside on a SQL Cluster configuration, complete following the instructions.

1. Perform this step on the database cluster instance on each node using the instructions on “How to enable JDBC distributed transactions and XA using Costpoint Installer for an instance.”
2. The sequence of steps to open Component Services on your server might be different based on your Windows OS version.
3. On the left navigator tree, go to **Component Services » Computers » My Computer » Distributed Transaction Coordinator » Clustered DTCs**.

**Note:** If you do not see the **Clustered DTCs** section, you may need to move the DTC Service to this node to make this visible. Please reopen Component Services after moving the DTC service to this node.

While the product may be functional by setting these properties on the active node during initial installation, it is important that all these steps are done in all nodes so that when the SQL Cluster services failover to alternate available nodes, the DTC function performs distributed transactions for proper application behavior.

4. Right-click your configured Distributed Transaction Coordinator Service Name (for example, DELTEKCPDTC), and click **Properties** on the shortcut menu.
5. On the Security tab, select **XA Transactions**.



6. Click **Apply**.

The following message displays:

“The MSDTC Service will be stopped and restarted. All dependent services will be stopped. Applications using MSDTC may need to be restarted to use the new settings.”

7. Click **Yes**.

The following message displays: “The MSDTC service has been restarted.”

8. Reboot the server.

9. Repeat for each node participating in the cluster, and proceed to the “Application Tier Installation” section.

# Application Tier Installation

The Costpoint 7.1.1 system uses Oracle's WebLogic Server for its application server tier. During the Application Tier installation process, you will install the WebLogic Server 12.1.3 application server software and the Costpoint 7.1.1 software.

As previously mentioned in the [Pre-Installation Instructions](#) section, the Costpoint 7.1.1 WebLogic application server must not contain any previous versions of WebLogic.

## Before You Start

Make sure that you meet all [Application Tier Installation Prerequisites](#).

## Install Application Tier Software

This step provides instructions for installing Oracle's WebLogic Server 12.1.3 application server software and Deltak Costpoint 7.1.1 software.

You must perform this step on the machine that will serve as your Costpoint 7.1.1 **application** server.

You must have Internet access on the machine where the Costpoint 7.1.1 installer is invoked in order to download the latest DeltakCostpointRequirementsINI.exe file automatically. The file contains the latest OS platforms and database versions supported. The file is automatically downloaded when you launch the Application Tier installation, assuming that your application server has Internet access.

**Note:** The Deltak product installers contain functionality which enables them to dynamically download configuration files and patch rollback scripts when the product installers are executed from the Deltak Software Manager server. To improve security, these connections have been modified to require communication over HTTPS.

If your application server does not have internet access, you will need to perform the steps in the [Latest Upgrade Files Download](#) section of this document before you run the DeltakCostpoint711ApplicationTier.exe file.

**To install the Application Tier software, complete the following steps:**

1. Run the **DeltakCostpoint711ApplicationTier.exe** file to launch the Costpoint 7.1.1 Application Tier installation program.

**Note:** Due to enhanced security in Microsoft Windows Server, it is advised that you use the **Run as Administrator** option when launching installation files, even if you are logged in as a user with local administrative rights.

2. On the Welcome to the InstallShield Wizard for the Costpoint screen, click **Next >**.
3. Review the license agreement, and select **I accept the terms of the license agreement** check box, and click **Next >**.
4. On the Select Deltak Costpoint Install Type screen, select **New Install**, and click **Next >**.
5. On the Setup Type screen, complete the following fields, and click **Next >**.

Field Name	Action
<b>Primary Application Server Tier</b>	<p>Select this setup type to install both the Oracle WebLogic and Deltek Costpoint Application Tier software.</p> <p>This option must be selected if installing Costpoint in a non-clustered environment or if this will be your Primary Application Server Tier in a clustered environment.</p> <p>Additional changes are required to configure a clustered environment.</p>
<b>Secondary Application Server Tier</b>	<p>Select this setup type to install only the Oracle WebLogic software. The Deltek Costpoint Application Tier software will not be installed.</p> <p>This option must only be selected when configuring a clustered environment after your Primary Application Server Tier has already been installed.</p>

- On the Choose Oracle WebLogic Installation Directory screen, click **Browse** to navigate to an installation location for the Oracle WebLogic software, and click **Next >**.

The default is **C:\Oracle\Middleware12.1.3** (recommended).

Do not install the WebLogic Server software in a directory path or folder that contains a space. The Costpoint 7.1.1 software will not function properly if the WebLogic Server software is installed to a directory path or folder that contains a space.

- If you selected **Secondary Application Server Tier** for the **Setup Type**, the Pre-Installation Summary screen displays. Proceed to step 24 of this procedure.
- On the Choose Deltek Costpoint Installation Directory screen, navigate to the location where you want the Costpoint 7.1.1 software installed, and click **Next >**.

The default directory is **C:\Deltek** (recommended).

The directory in which you install the Costpoint 7.1.1 software cannot be the Oracle WebLogic install directory (C:\Oracle\Middleware12.1.3).

**Note:** If you choose to install to a different drive, Deltek strongly recommends that you use the same **Deltek** default directory (**E:\Deltek**).

- On the Choose License File screen, click **Browse** to navigate to the folder containing the Deltek supplied **LICENSE.ZIP** file, and click **Next >**.
- On the Select Database Platform screen is displayed, select **Microsoft SQL Server**, and click **Next >**.
- On the Microsoft SQL Server for Deltek Costpoint 7.1.1 Transaction Database Information screen, complete the following fields.

Field Name	Action
<b>IP Address or Hostname</b>	Enter the IP address (for example, <b>10.2.2.154</b> ) or hostname (for example, <b>dbsvr01</b> ) of your Costpoint 7.1.1 Transaction (DELTEKCP) database server. The default value is your computer name.

Field Name	Action
	The IP Address or Hostname cannot be <b>127.0.1.0.1</b> or <b>localhost</b> . For RAC installations, you must specify the IP Address or Hostname of one of the instances. Do not use the Virtual IP Address.
<b>Port</b>	Enter the port that your Costpoint 7.1.1 Transaction database server software uses to listen for requests. The default port for SQL Server is <b>1433</b> .
<b>Database Name</b>	Enter the name of your Costpoint 7.0.1 Transaction (DELTEKCP) database. The default value is <b>DELTEKCP</b> . In addition to standard alphanumeric characters, the following special characters are also supported: <b>\$ - _</b>
<b>Instance Name</b>	Enter the name of your Costpoint 7.1.1 Transaction (DELTEKCP) database instance. The default value is <b>local</b> . In addition to standard alphanumeric characters, the following special characters are also supported: <b>\$ - _</b>
<b>User Name</b>	Enter the name of your DELTEK user. The default is <b>DELTEK</b> . In addition to standard alphanumeric characters, the following special characters are also supported: <b>\$ - _</b>
<b>Password</b>	Enter the password for your DELTEK user. In addition to standard alphanumeric characters, the following special characters are also supported: <b>' ~ # \$ ^ &amp; ( ) - _ + = , .</b>
<b>SA User Name</b>	Enter the name of your Microsoft SQL Server SA user. The default is <b>sa</b> . In addition to standard alphanumeric characters, the following special characters are also supported: <b>\$ - _</b>
<b>SA User Password</b>	Enter the password for your Microsoft SQL Server SA user. In addition to standard alphanumeric characters, the following special characters are also supported: <b>' ~ # \$ ^ &amp; ( ) - _ + = , .</b>

12. Click **Test Connection**.

If you have entered the proper database connection information, the following message displays:  
"Connection Successful. Click Next."

If it this message does not display, correct the information entered, and click **Test Connection** again.

13. After you receive the message, click **Next >**.
14. On the Microsoft SQL Server for Deltek Costpoint 7.1.1 Admin Database Information screen, complete the following fields.

Field Name	Action
<b>IP Address or Hostname</b>	<p>Enter the IP address (for example, <b>10.2.2.154</b>) or hostname (for example, <b>dbsvr01</b>) of your Costpoint 7.1.1 Transaction (DELTEKCP) database server. The default value is your computer name.</p> <p>The IP Address or Hostname cannot be <b>127.0.1.0.1</b> or <b>localhost</b>.</p> <p>For RAC installations, you must specify the IP Address or Hostname of one of the instances. Do not use the Virtual IP Address.</p>
<b>Port</b>	<p>Enter the port that your Costpoint 7.1.1 Transaction database server software uses to listen for requests. The default port for SQL Server is <b>1433</b>.</p>
<b>Database Name</b>	<p>Enter the name of your Costpoint 7.1.1 Transaction (DELTEKCP) database. The default value is <b>DELTEKCP</b>. In addition to standard alphanumeric characters, the following special characters are also supported:</p> <p><b>\$ - _</b></p>
<b>Instance Name</b>	<p>Enter the name of your Costpoint 7.1.1 Transaction (DELTEKCP) database instance. The default value is <b>local</b>. In addition to standard alphanumeric characters, the following special characters are also supported:</p> <p><b>\$ - _</b></p>
<b>User Name</b>	<p>Enter the name of your CPADMIN user. The default is <b>CPADMIN</b>. In addition to standard alphanumeric characters, the following special characters are also supported:</p> <p><b>\$ - _</b></p>
<b>Password</b>	<p>Enter the password for your CPADMIN user. In addition to standard alphanumeric characters, the following special characters are also supported:</p> <p><b>' ~ # \$ ^ &amp; ( ) - _ + = , .</b></p>
<b>SA User Name</b>	<p>Enter the name of your Microsoft SQL Server SA user. The default is <b>sa</b>. In addition to standard alphanumeric characters, the following special characters are also supported:</p> <p><b>\$ - _</b></p>
<b>SA User Password</b>	<p>Enter the password for your Microsoft SQL Server SA user. In addition to standard alphanumeric characters, the following special characters are also supported:</p>

Field Name	Action
	' ~ # \$ ^ & ( ) - _ + = , .

15. Click **Test Connection**.

If you have entered the proper database connection information, the following message displays:  
"Connection Successful. Click Next."

If it this message does not display, correct the information entered, and click **Test Connection** again.

16. After you receive the message, click **Next >**.

17. On the Microsoft SQL Server for Deltek Costpoint 7.1.1 System Database Information screen, complete the following fields:

Field Name	Action
<b>IP Address or Hostname</b>	Enter the IP address (for example, <b>10.2.2.154</b> ) or hostname (for example, <b>dbsvr01</b> ) of your Costpoint 7.1.1 Transaction (DELTEKCP) database server. The default value is your computer name.  The IP Address or Hostname cannot be <b>127.0.1.0.1</b> or <b>localhost</b> .  For RAC installations, you must specify the IP Address or Hostname of one of the instances. Do not use the Virtual IP Address.
<b>Port</b>	Enter the port that your Costpoint 7.1.1 Transaction database server software uses to listen for requests. The default port for SQL Server is <b>1433</b> .
<b>Database Name</b>	Enter the name of your Costpoint 7.1.1 Transaction (DELTEKCP) database. The default value is <b>DELTEKCP</b> . In addition to standard alphanumeric characters, the following special characters are also supported:  \$ - _
<b>Instance Name</b>	Enter the name of your Costpoint 7.1.1 Transaction (DELTEKCP) database instance. The default value is <b>local</b> . In addition to standard alphanumeric characters, the following special characters are also supported:  \$ - _
<b>User Name</b>	Enter the name your CPSYSTEM user. The default user is <b>CPSYSTEM</b> . In addition to standard alphanumeric characters, the following special characters are also supported:  \$ - _
<b>Password</b>	Enter the password for your CPSYSTEM user. In addition to standard alphanumeric characters, the following special characters are also supported:

Field Name	Action
	' ~ # \$ ^ & ( ) - _ + = , .
<b>SA User Name</b>	Enter the name of your Microsoft SQL Server SA user. The default is <b>sa</b> . In addition to standard alphanumeric characters, the following special characters are also supported:  \$ - _
<b>SA User Password</b>	Enter the password for your Microsoft SQL Server SA user. In addition to standard alphanumeric characters, the following special characters are also supported:  ' ~ # \$ ^ & ( ) - _ + = , .

18. Click **Test Connection**.

If you have entered the proper database connection information, the following message displays:  
"Connection Successful. Click Next."

If it this message does not display, correct the information entered, and click **Test Connection** again.

19. After you receive the message, click **Next >**.

20. On the Deltek Costpoint 7.1.1 Link User Information screen, complete the following fields:

Field Name	Action
<b>User Name</b>	Enter the name your LINK user account. The default user is <b>CPLINK_USER</b> . In addition to standard alphanumeric characters, the following special characters are also supported:  \$ - _
<b>Password</b>	Enter the password for your LINK user account. In addition to standard alphanumeric characters, the following special characters are also supported:  ' ~ # \$ ^ & ( ) - _ + = , .

21. Click **Test Connection**.

If you have entered the proper database connection information, the following message displays:  
"Connection Successful. Click Next."

If it this message does not display, correct the information entered, and click **Test Connection** again.

22. After you receive the message, click **Next >**.

23. On the Costpoint System Information screen displays, complete the following fields, and click **Next >**.

Field Name	Action
Listen Port	Enter the port that your Application Server will use to listen for connections. The default value is <b>7009</b> .
System Name	<p>Enter the system name that will be used to log on to the Costpoint 7.1.1 system.</p> <p>Deltek recommends that you use your Costpoint 7.1.1 database name, DELTEKCP.</p> <p>The characters used for the system name must be uppercase and alphanumeric. It must not contain any special characters and must be 16 characters or less in length.</p>

24. On the Pre-Installation Summary screen, review the installation parameters you have selected:

- If you want to change any settings, click **< Back** to go back and make the necessary changes.
- If you are satisfied with these settings, click **Install >** to begin the installation.

Once initiated, the installation process can take a long time to complete. Please do not interrupt the process. A Windows Command Prompt will also appear on your screen that displays the scripts that are being executed.

The installation will perform the scenarios detailed in the [Installation Process Changes for Costpoint 7.1.1](#) section of this document. The installation process will stop if any errors are encountered. If any errors occur during the installation, please refer to the [Troubleshooting Instructions](#) section of this document.

25. On the InstallShield Wizard Complete screen, select the **Yes, I want to view the log file** check box to open the DeltekCostpoint711ApplicationTierInstallLog\_<date>\_<time>.txt file from the C:\Program Files\Deltek\Costpoint\7.1.1\logs directory.

This check box is selected by default.

26. Click **Finish** to exit the installation.

27. When the DeltekCostpoint711ApplicationTierInstallLog\_<date>\_<time>.txt file opens, search for the following keyword:

- **“Error”** – Report any search results to Deltek Costpoint Technical Support. The following error messages can be ignored:
  - OnInstallingFile - Installing File : C:\Deltek\Costpoint\71\applications\enterprise\DEWebApp\error401.htm
  - OnInstallingFile - Installing File : C:\Deltek\Costpoint\71\applications\enterprise\DEWebApp\error403.htm
  - OnInstallingFile - Installing File : C:\Deltek\Costpoint\71\applications\enterprise\DEWebApp\error404.htm
  - OnInstallingFile - Installing File : C:\Deltek\Costpoint\71\applications\enterprise\DEWebApp\error500.htm
  - OnInstallingFile - Installing File : C:\Deltek\Costpoint\71\applications\enterprise\tools\error.png
  - OnInstallingFile - Installing File : C:\Deltek\Costpoint\71\applications\enterprise\DEWebApp\images\error.png
  - OnInstallingFile - Installing File : C:\Deltek\Costpoint\71\applications\enterprise\DEWebApp\images\prompt\_error\_bottomborder-righthand.png
  - OnInstallingFile - Installing File : C:\Deltek\Costpoint\71\applications\enterprise\DEWebApp\images\prompt\_error\_bottomborder.png



- OnInstallingFile - Installing File :  
C:\Deltek\Costpoint\71\applications\enterprise\DEWebApp\images\prompt\_error\_pointer-righthand.png
- OnInstallingFile - Installing File :  
C:\Deltek\Costpoint\71\applications\enterprise\DEWebApp\images\prompt\_error\_pointer.png
- OnInstallingFile - Installing File :  
C:\Deltek\Costpoint\71\applications\enterprise\DEWebApp\images\prompt\_error\_topborder-righthand.png
- OnInstallingFile - Installing File :  
C:\Deltek\Costpoint\71\applications\enterprise\DEWebApp\images\prompt\_error\_topborder.png
- OnInstallingFile - Installing File :  
C:\Deltek\Costpoint\71\applications\enterprise\DEWebApp\images\prompt\_error\_vbackground-righthand.png
- OnInstallingFile - Installing File :  
C:\Deltek\Costpoint\71\applications\enterprise\DEWebApp\images\prompt\_error\_vbackground.png

If you are running a WebLogic cluster, you must repeat this step for all of your WebLogic servers. Running once on your Cluster master, choose **Primary Application Server Tier** for the **Setup Type**, and on each of your cluster nodes, choose **Secondary Application Server Tier** for the **Setup Type**.

**Note:** Please refer to the [DeltekCostpoint711ConfigurationUtility.pdf](#) technical guide for more information on WebLogic clustering.

Make sure that your default Application Server Listener Port, **7009**, is open for Inbound and Outbound traffic through your firewall. Also, make sure that Network discovery and File Sharing options are switched on.

## Add Users to the CostpointToolsGroup

The steps to add the necessary users to the newly created User Group, **CostpointToolsGroup**, are detailed in this section. The Application Tier installation you just completed has added this group to your application server, granting it both **Full Sharing** and **Full Security Permissions** to the **C:\Deltek** folder and **Full Security Permissions** to the **C:\Oracle\Middleware12.1.3** folder.

You must perform this step on your Costpoint 7.1.1 application server.

**To add users to the newly created CostpointToolsGroup, complete the following steps:**

1. Click **Start » Administrative Tools » Computer Management**.

**Note:** For Windows Server 2012, right-click **Start**, and click **Computer Management**.

2. From **Computer Management » Local Users and Groups » Groups**, add the following users to the **CostpointToolsGroup** group:
  - **Web Tier (IIS) install user** — The user that will run the Web Tier install will need to be in this group prior to running that install in the next section.
  - **Application Tier (Costpoint) Windows Service account** — The user that you will use to start and run the Costpoint Windows Service.
  - **Application Tier (Costpoint) Tools user** — The user that you will use to log in to the application server to run any of the Costpoint tools, such as the Config Utility, Migrate User Utility, or DBWizard.
3. Reboot your Costpoint 7.1.1 application server.

## Before You Start

Make sure that you meet all [Costpoint 7.1.1 Server Startup Prerequisites](#).

## Manually Start Costpoint 7.1.1

The steps to starting Costpoint 7.1.1 are detailed in this section. You must start the Costpoint 7.1.1 WebLogic Server on your application server to gain access to the Costpoint 7.1.1 system.

You must perform this step on your Costpoint 7.1.1 application server.

**To start Costpoint 7.1.1, complete the following steps:**

1. Optional. In order for the Start Costpoint 7.1.1 Windows Command Prompt to have scrolling capability, perform the following:
  - a. Right-click **Start**, select **Search**, enter **Costpoint 7.1.1**, right-click **Start Costpoint 7.1.1**, and click **Open file location**.
  - b. Right-click **Start Costpoint 7.1.1** and click **Properties** on the shortcut menu.
  - c. Click the Layout tab and increase the **Screen buffer size Height** from **300** to **2000**.
  - d. Click **OK** to save the changes.
2. Right-click **Start**, select **Search**, enter **Costpoint 7.1.1**, right-click **Start Costpoint 7.1.1**, and click **Run as administrator**.

**Note:** Due to enhanced security in Windows Server, it is advised that you use the **Run as Administrator** option when launching this command even if the logged in user has local administrative rights.

This opens a Windows Command Prompt and launches a command script that starts the Costpoint 7.1.1 WebLogic Server. When the Windows Command Prompt window opens, you will see a series of messages scrolling down the screen.

Starting the Costpoint 7.1.1 WebLogic Server can take a long time to complete. Please do not interrupt the process.

3. After the Costpoint 7.1.1 WebLogic Server has successfully started, the following message displays at the bottom of the command line shell window:

**<The server started in RUNNING mode.>**

If the Costpoint 7.1.1 WebLogic Server encounters errors during the startup process, the message will not be display and the command line shell (DOS window) may terminate.

If the message does not display or if the command line shell (DOS window) terminates, you must perform the following:

- Make a copy of the C:\Deltek\Costpoint\71\logs\DEServer.log file.
- Contact Deltek Costpoint 7.1.1 Technical Support.

## Install Costpoint 7.1.1 Windows Service

The steps to installing the Costpoint 7.1.1 Windows service are detailed in this section.

This step must be performed on your Costpoint 7.1.1 WebLogic application server.

To install Costpoint 7.1.1 to run as a Windows service, complete the following steps:

1. Stop the Costpoint 7.1.1 WebLogic Server.

**Note:** See the [Stop Costpoint 7.1.1 WebLogic Server from the Web Browser](#) section for information on starting and stopping the Costpoint 7.1.1 WebLogic Server.

2. Use Windows Explorer to navigate to the directory where the Costpoint 7.1.1 software was installed (C:\Deltek\Costpoint\71\bin), right-click **InstallCPWebasService.cmd**, and select **Run as administrator**.

## Configure Costpoint 7.1.1 Windows Service

The steps to configuring the Costpoint 7.1.1 Windows service are detailed in this section.

This step must be performed on your Costpoint 7.1.1 WebLogic application server.

To configure Costpoint 7.1.1 Windows service, complete the following steps:

1. Click **Start » Administrative Tools » Services**.
2. On the Services window, scroll down the **Services** drop-down list, right-click the **Costpoint 7.1.1** service, and then click **Properties** on the shortcut menu.

If you do cannot find the **Costpoint 7.1.1** service, then the service must not have installed properly in the previous step. Please repeat Step 1 of [Installing Costpoint 7.1.1 as a Windows Service](#).

3. On the Costpoint 7.1.1 Properties screen, click the Recovery tab, and complete the following.

Field Name	Action
<b>First failure</b>	Change the drop-down selection from <b>Take No Action</b> to <b>Restart the Service</b> .
<b>Second failure</b>	Accept the default value, <b>Take No Action</b> .
<b>Subsequent failures</b>	Accept the default value, <b>Take No Action</b> .
<b>Reset fail count after</b>	Change the value from <b>0</b> to <b>1</b> days.
<b>Restart service after</b>	Accept the default value, <b>1</b> minute.

4. Click **Apply**.
5. On the Costpoint 7.1.1 Properties screen, click the Log On tab, and complete the following.

Field Name	Action
<b>Account</b>	Enter the domain Account. For example, Example: domain\useraccountname.

Field Name	Action
	If using a domain service login account instead of using the "Local System Account" select <b>This Account</b> .
<b>Password</b>	Enter the password for the domain Account.
<b>Confirm Password</b>	Re-enter your password for the domain Account.

- Click **Apply**.

Make sure that the login account for the Costpoint Service is in the local Administrators group on the Application Tier server and is part of the local security group created by the Application Tier installer, CostpointToolsGroup.

Also, keep in mind that this login account must be given full access permissions for any Alternate File locations set up (network shared directories). Alternate File locations are used for Costpoint users for uploading and downloading files from within Costpoint.

- On the Costpoint 7.1.1 Properties screen, click the General tab, and click **Start** to start the Costpoint 7.1.1 service.

The service will indicate that it started immediately. However, please note that it takes several minutes for the Costpoint 7.1.1 service to fully initialize.

After starting the service, wait several minutes before attempting to connect to the software.

If you encounter problems with the Costpoint 7.1.1 service, check the C:\Delttek\Costpoint\71\logs\DEServer.log file and report any errors to Delttek Costpoint 7.1.1 Technical Support.

- Click **OK** to close the Costpoint 7.1.1 Properties screen, and close the Services window.

## Web Tier Installation

The steps to integrate your Costpoint 7.1.1 software with the Microsoft Internet Information Server (IIS) is detailed in this section.

The Microsoft Internet Information Server component is **optional**. The WebLogic Server software included an integrated Web server component that you can use with the Costpoint 7.1.1 software.

Though the use of the IIS component is optional, Deltek strongly recommends that you install it in your production environment. In addition to acting as the proxy, the IIS server is also used to load balance the cluster nodes.

### Before You Start

Make sure that you meet all [Web Tier Installation \(Microsoft IIS\) Prerequisites](#).

## Configure Microsoft IIS Web Server for Costpoint 7.1.1

The steps to configure Microsoft IIS prior to the installation of Costpoint 7.1.1 are detailed in this section.

You must perform this step on a Web server that uses Microsoft Internet Information Server.

**To configure Microsoft IIS Web server, complete the following steps:**

1. Click **Start » Administrative Tools » Server Manager**.
2. Click **Manage**, and select **Add Roles and Features**.
3. On the Before you begin screen, click **Next**.
4. On the Select installation type screen, accept the default of **Role-based or feature-based installation**, and click **Next**.
5. On the Select destination server, accept the default of **Select a server from the server pool**, which should have automatically selected the IIS server you are on, and click **Next**.
6. On the Select server roles screen, scroll down and select **Web Server (IIS)**.
7. On the Add features that are required for Web Server (IIS) screen, click **Add Features**.
8. On the Select server roles screen, click **Next**.
9. On the Select features screen, click **Next**.
10. On the Web Server Role (IIS) screen, click **Next**.
11. On the Select role services screen, perform the following:
  - Scroll down, expand **Application Development**, and select **ISAPI Extensions**.
  - Scroll down, under **Management Tools**, expand **IIS 6 Management Compatibility**, and select **IIS 6 Metabase Compatibility**.
  - Scroll down and select **IIS Management Scripts and Tools**.
  - Click **Next**.
12. On the Confirm installation selection screen, click **Install**.
13. After the installation is complete, click **Close**.
14. Click **Tools**, and select **Internet Information Services (IIS) Manager**.

15. On the Internet Information Services (IIS) Manager screen, right-click your IIS computer name icon, and click **Stop**.
16. Right-click your IIS computer name icon again, and click **Start**.
17. Close the Internet Information Services (IIS) Manager window.
18. Close the Services Manager window.

## Install Web Tier Software

The steps to integrate the Costpoint 7.1.1 system with Microsoft IIS are detailed in this section.

You must perform this step on a Web server that is using Microsoft Internet Information Server.

You must have Internet access on the machine where the Costpoint 7.1.1 installer is invoked in order to download the latest DeltekCostpointRequirementsINI.exe file automatically. The file contains the latest OS platforms and database versions supported. The file is automatically downloaded when you launch the Web Tier installation, assuming that your web server has Internet access.

**Note:** The Deltek product installers contain functionality which enables them to dynamically download configuration files and patch rollback scripts when the product installers are executed from the Deltek Software Manager server. To improve security, these connections have been modified to require communication over HTTPS.

If your application server does not have internet access, you will need to perform the steps in the [Latest Upgrade Files Download](#) section of this document before you run the DeltekCostpoint711WebTier.exe file.

**To install Costpoint 7.1.1 on your Microsoft IIS Web server, complete the following steps:**

1. Run the **DeltekCostpoint711WebTier.exe** file to launch the Costpoint 7.1.1 Web Tier installation program.

**Note:** Due to enhanced security in Windows Server, it is advised that you use the Run as Administrator option when launching the executable files even if the logged in user has local administrative rights.

2. On the Welcome to the InstallShield Wizard for Costpoint screen, click **Next >**.
3. Review the license agreement, select **I accept the terms of the license agreement**, and click **Next >**.
4. On the Select Deltek Costpoint Install Type screen, select **New Install**, and click **Next >**.
5. On the Choose Deltek Costpoint Installation Directory screen, click **Browse** to navigate to an installation location for the Deltek Costpoint 7.1.1 IIS software.

The default is **C:\Deltek\Costpoint\71\applications** (recommended).

The installation process populates the folder selected above with a \DEWebApp folder that contains all the program files you need to integrate the Costpoint 7.1.1 software that resides on your application server with your Microsoft IIS Web server.

6. Click **Next >**.
7. On the Deltek Costpoint 7.1.1 WebLogic System Information screen, complete the following fields:

Field Name	Action
<b>IP Address or Hostname</b>	Enter the IP address ( <b>10.2.2.154</b> ) or hostname ( <b>appsrv01</b> ) of your Costpoint 7.1.1 WebLogic application server.  The IP Address or Hostname must not be <b>127.0.1.0.1</b> or <b>localhost</b> .
<b>Listen Port</b>	Enter the Listener Port for your Costpoint 7.1.1 WebLogic application server. You specified this port during the Costpoint 7.1.1 application server software installation. The default port is <b>7009</b> (recommended).  Your Microsoft IIS Web server will use the IP address or hostname and Listener Port information to forward requests to your Costpoint 7.1.1 WebLogic application server. This port must match the one entered during the Costpoint 7.1.1 Application Server installation.

8. Click **Next >**.
9. On the IIS Website Name screen, locate the **Website Name** field and select the Website where you want to create the Deltek Costpoint 7.1.1 Virtual Directory (**CPWeb**).  
  
Typically, this is the **Default Web Site**.
10. Click **Next >**.
11. On the Choose Deltek Costpoint 7.1.1 Path screen, click **Browse** to navigate to the shared UNC path (**\\appsrv01\Deltek\_shared**) of the **Deltek** folder that resides on your **Costpoint 7.1.1 Application Server** (if your Web Server is also your Application Server, enter the directory, **C:\Deltek**).  
  
The Windows Administrator user account (or equivalent) on the machine that hosts your Costpoint 7.1.1 IIS Web server software that is running this installation must exist in the CostpointToolsGroup created on your Costpoint 7.1.1 application server. That group has the proper write permissions to the C:\Deltek share created on your Costpoint 7.1.1 Application Server
12. On the Pre-Installation Summary screen, review the installation parameters you have selected:
  - If you want to change any settings, click **< Back** to go back and make the necessary changes.
  - If you are satisfied with these settings, click **Install >** to begin the installation.

Once initiated, the installation process can take a long time to complete. Please do not interrupt the process.

The installation will perform the scenarios detailed in the [Installation Process Changes for Costpoint 7.1.1](#) section of this document.

The installation process creates the **CPWeb** Virtual Directory under the Default Website, using the Default App Pool. The process also creates a share of your Costpoint 7.1.1 Costpoint directory, **C:\Deltek\Costpoint\71\applications**. In order for the Application Server (WebLogic) to deploy hot fixes and updates, this directory must be shared with Co-Owner (Full Control) rights.

During the installation process, a new User Group, **CostpointToolsGroup**, is created and given Full Sharing and Security rights on **C:\Deltek\Costpoint\70\applications**.

13. On the InstallShield Wizard Complete screen, select **No, I will restart my computer later**, and click **Finish**.

14. Open the DeltekCostpoint711WebTierInstallLog\_<date>\_<time>.txt file (from the C:\Program Files\Deltek\Costpoint\7.1.1\logs directory), and search for the following:

- **“Error”** – Report any search results to Deltek Costpoint Technical Support. The following errors can be ignored:
  - All of these messages:
    - OnInstallingFile - Installing File :  
C:\Deltek\Costpoint\71\applications\enterprise\DEWebApp\error401.htm
    - OnInstallingFile - Installing File :  
C:\Deltek\Costpoint\71\applications\enterprise\DEWebApp\error403.htm
    - OnInstallingFile - Installing File :  
C:\Deltek\Costpoint\71\applications\enterprise\DEWebApp\error404.htm
    - OnInstallingFile - Installing File :  
C:\Deltek\Costpoint\71\applications\enterprise\DEWebApp\error500.htm
    - OnInstallingFile - Installing File :  
C:\Deltek\Costpoint\71\applications\enterprise\tools\error.png
    - OnInstallingFile - Installing File :  
C:\Deltek\Costpoint\71\applications\enterprise\DEWebApp\images\error.png
    - OnInstallingFile - Installing File :  
C:\Deltek\Costpoint\71\applications\enterprise\DEWebApp\images\prompt\_error\_bottomborder-right.png
    - OnInstallingFile - Installing File :  
C:\Deltek\Costpoint\71\applications\enterprise\DEWebApp\images\prompt\_error\_bottomborder.png
    - OnInstallingFile - Installing File :  
C:\Deltek\Costpoint\71\applications\enterprise\DEWebApp\images\prompt\_error\_pointer-right.png
    - OnInstallingFile - Installing File :  
C:\Deltek\Costpoint\71\applications\enterprise\DEWebApp\images\prompt\_error\_pointer.png
    - OnInstallingFile - Installing File :  
C:\Deltek\Costpoint\71\applications\enterprise\DEWebApp\images\prompt\_error\_topborder-right.png
    - OnInstallingFile - Installing File :  
C:\Deltek\Costpoint\71\applications\enterprise\DEWebApp\images\prompt\_error\_topborder.png
    - OnInstallingFile - Installing File :  
C:\Deltek\Costpoint\71\applications\enterprise\DEWebApp\images\prompt\_error\_vbackground-right.png
    - OnInstallingFile - Installing File :  
C:\Deltek\Costpoint\71\applications\enterprise\DEWebApp\images\prompt\_error\_vbackground.png

Make sure that Network Discovery and File Sharing options are switched on.



## Add Users to the CostpointToolsGroup

The steps to add the necessary users to the newly created **CostpointToolsGroup** are detailed in this section. The Web Tier installation added this group to your Web server and has granted the group **Full Sharing** and **Full Security Permissions** to the folder containing your DEWebApp folder, **C:\Deltek\Costpoint\71\applications**.

You must perform this step on your Costpoint 7.1.1 Web server.

To add users to the newly created **CostpointToolsGroup**, complete the following steps:

1. Right-click **Start**, and select **Computer Management**.
2. From **Computer Management**, **Local Users and Groups**, **Groups**, add the following users to the **CostpointToolsGroup** group:
  - **Application Tier (Costpoint) Tools user** — The user that you will use to log in to the application server to run any of the Costpoint tools, such as the Config Utility, Migrate User Utility, or DBWizard.
3. Reboot your Costpoint 7.1.1 Web server.

## Configure Costpoint 7.1.1 IIS Access

The steps to configure Costpoint 7.1.1 to work through IIS are detailed in this section.

You must perform this step on your Costpoint 7.1.1 WebLogic application server.

To configure Costpoint 7.1.1 and IIS, complete the following steps:

1. With your Costpoint 7.1.1 service running, right-click **Start**, select **Search**, enter **Costpoint 7.1.1**, right-click **Start Costpoint 7.1.1 Config Utility**, and click **Run as administrator**.

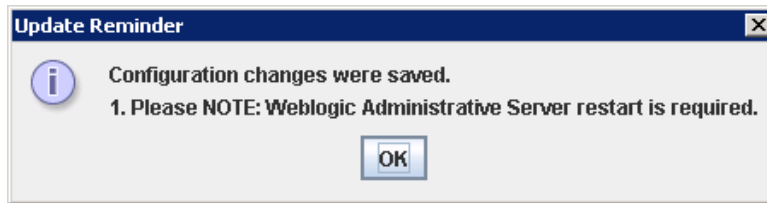
**Note:** Due to the enhanced security in Windows Server, it is advised to that you use the **Run as Administrator** option when launching this command even if the logged in user has local administrative rights.

2. On the Select Your Configuration Options screen, make sure the **IIS Connection Configuration** check box is selected, and click **Next**.
3. On the Costpoint Configuration Utility screen, click the IIS tab and perform the following.

Field Name	Action
<b>Use IIS</b>	Select this check box. This option is cleared by default.
<b>Configuration File Location (iisproxy.ini)</b>	<p>Click the ellipsis button, and navigate to the \\CPIisServer\Costpoint folder share on your IIS server.</p> <p>Select the <b>DEProxy\lib</b> folder to access the <b>iisproxy.ini</b> file, and click <b>Open</b>.</p> <p>Click <b>OK</b> after the following message displays: "Configuration file iisproxy.ini was successfully loaded."</p>

Field Name	Action
<b>DEWebApp Folder Location</b>	Click the ellipsis button, and navigate to the shared \\CPiisServer\Costpoint folder on your IIS server, and click <b>Open</b> .
<b>WebLogic Host IP</b>	Enter your WebLogic application server name.
<b>Port</b>	Enter the WebLogic Listener Port, <b>7009</b> .

- Click **Save**, the following messages is displayed:



- Click **OK**, and click **Close**.

## Restart Costpoint 7.1.1 WebLogic Server

The steps to stop and restart your Costpoint 7.1.1 WebLogic Server are detailed in this section.

You must perform this step on your Costpoint 7.1.1 WebLogic application server.

**To stop and restart your Costpoint 7.1.1 WebLogic Server, complete the following steps:**

- Click **Start » Administrative Tools » Services**.
- On the Services window opens, scroll down the **Services** list and **Stop** the **Costpoint 7.1.1 service**.
- After the service stops, **Start** the **Costpoint 7.1.1 service**.

**Note:** The service immediately indicates that it has started. However, please note that it takes several minutes for the Costpoint 7.1.1 service to fully initialize.

After starting the service, wait several minutes before attempting to connect to the software.

If you encounter problems with the Costpoint 7.1 service, check the **C:\Deltek\Costpoint\7.1.1\logs\DEServer.log** file and report any errors to Deltek Costpoint 7.1.1 Technical Support.

- Close the Services window.

## Costpoint 7.1.1 Initial Log In Configuration

The steps to configure your browser and verify your Costpoint 7.1.1 Application Tier and Web Tier installations are detailed in this section. To confirm that these servers are functioning properly, you will log in to Costpoint 7.1.1 and preview a report.

### Before You Start

Make sure that you meet all [Costpoint 7.1.1 Initial Log In Configuration Prerequisites](#).

### Costpoint 7.1.1 Printer Configuration

This step is optional. It provides configuration instructions for your Application Tier WebLogic Server to allow you to print Costpoint 7.1.1 reports. This is useful for asynchronous printing from the server, especially for tasks such as printing reports through the Job Server in the middle of the night.

**Note:** Users can print to local printers from the workstations without configuring anything in this step.

You must perform this step on your Costpoint 7.1.1 application server.

**To create Windows printer objects on your application server, complete the following steps:**

1. Right-click **Start**, click **Control Panel**, and under **Hardware**, select **View devices and printers**.
2. On the Printers and Faxes screen, double-click **Add Printer**.
3. Use the Add Printer Wizard to create a Windows printer object that will connect and print to a printer on your network.

On your application server, you can create as many Windows printer objects as needed for your organization. After the printer objects are created, your Costpoint 7.1.1 WebLogic application server will make the printer objects available to your users.

### Set Web Browser Internet Options

The steps to configure the Internet Explorer (IE) browser settings to access the Costpoint 7.1.1 system are detailed in this section.

This step must be performed on all Windows client workstations that will access your Costpoint 7.1.1 WebLogic application server.

**To configure the browser settings for accessing the Costpoint 7.1.1 system, complete the following steps:**

1. Open your Web browser.
2. From the menu bar, click **Tools » Internet Options**.
3. On the Internet Options screen, click the General tab, and click **Settings** under the **Browsing history** section.
4. On the Temporary Internet Files and History Settings screen, complete the following:

Field Name	Action
Check for newer versions of stored pages	Select <b>Automatically</b> .
Disk space to use	Enter at least 100 Megabytes (MB).

- Click **OK** to close the Settings screen.
- On the Internet Options screen, click the Security tab, and select **Trusted sites**, and click **Sites**.  
Depending on your environment, you may need to add your Costpoint 7.1.1 URL under **Local Internet** instead of **Trusted sites**.
- On the **Add this website to the zone**, enter **http://<IPAddress or ComputerName>**, where **<IPAddress or ComputerName>** identifies your Costpoint 7.1.1 WebLogic application server or IIS Web server, depending on which server you will be using to access Costpoint 7.1.1 (for example, **http://10.2.2.154**).
- Clear the **Require server verification (https:) for all sites in this zone** check box.
- Click **Add**, and then click **Close**.
- On the Internet Options screen, click the Advanced tab, scroll down under the **Browsing** section, and clear the **Reuse windows for launching shortcuts** check box.
- Click **OK** to close the Internet Options screen.
- From the menu bar, click **Tools » Pop-up Blocker » Turn Off Pop-up Block**.  
Disable any pop-up blockers or explicitly allow pop-ups for the Costpoint 7.1.1 URL, such as **http://<IPAddress or ComputerName>**, where **<IPAddress or ComputerName>** identifies your Costpoint 7.1.1 WebLogic application server or IIS Web server. For example, **http://10.2.2.154**.
- Close your Web browser.

## Log In To Costpoint 7.1.1

The steps to log in to Costpoint 7.1.1 are detailed in this section.

You can perform this step from any Windows client workstation that has TCP/IP access to your Costpoint 7.1.1 WebLogic application server.

**To log in to Costpoint 7.1.1, complete the following steps:**

- Open your Web browser, and enter one of the following URLs:

**http://<AppServerIPAddress or ComputerName>:<Port>**

**http://<WebServerIPAddress or ComputerName>/cpweb**

Where **<AppServerIPAddress or ComputerName>** identifies your Costpoint 7.1.1 WebLogic application server and **<Port>** identifies the unique port number that your Costpoint 7.1.1 WebLogic application server uses to listen for connections. You specified this port value during the Costpoint 7.1.1 software installation. The default is 7009 (for example, **http://10.2.2.154:7009**).

Or where **<WebServerIPAddress or ComputerName>** identifies your Costpoint 7.1.1 IIS Web server (for example, **http://10.2.2.156/cpweb**).

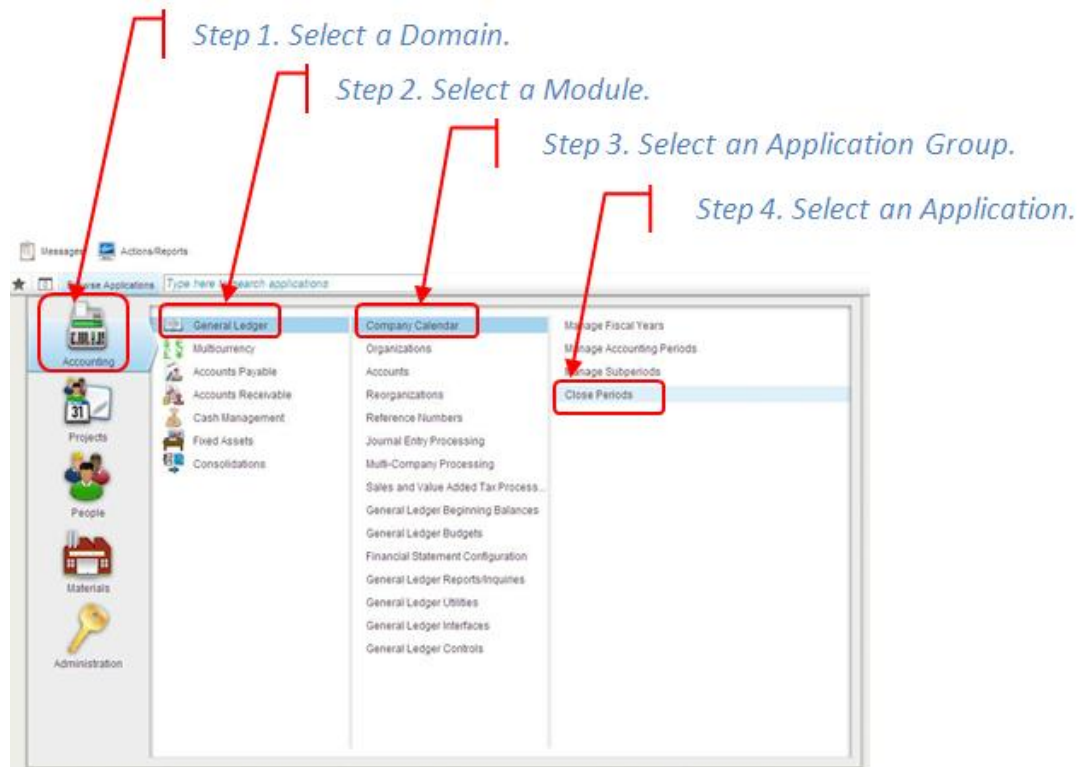
2. When the Deltek Costpoint 7 Welcome screen displays, complete the following.

Field Name	Action
<b>Username</b>	Enter <b>CPSUPERUSER</b> .
<b>Password</b>	Enter <b>password</b> . The password is case-sensitive and must be entered in lowercase. Passwords that you create for other user IDs may be uppercase, lowercase, or mixed.
<b>System</b>	Enter <b>&lt;Your_System_Name&gt;</b> , where <b>&lt;Your_System_Name&gt;</b> identifies the system name you assigned to your Costpoint 7.1.1 system during the Application Server Installation. Typically, customers use a system name that is identical to their Costpoint 7.1.1 Database name, <b>DELTEKCP</b> .
<b>SHOW ADDITIONAL CRITERIA</b>	Click <b>+</b> to display these additional fields: <ul style="list-style-type: none"> <li>▪ Application — Accept the blank default value, or enter a specific Costpoint 7.1.1 application. For example, COSTPOINT MENU.</li> <li>▪ Company — Enter your company ID. For example, 1.</li> <li>▪ Validation Frequency — Accept the default drop-down value, Field. After you have successfully logged in to Costpoint 7.1.1, review the online help for a detailed explanation of the value you can select for this field.</li> </ul>
<b>Remember log in information</b>	Select this check box to have the system remember your login information. This check box is not selected by default.

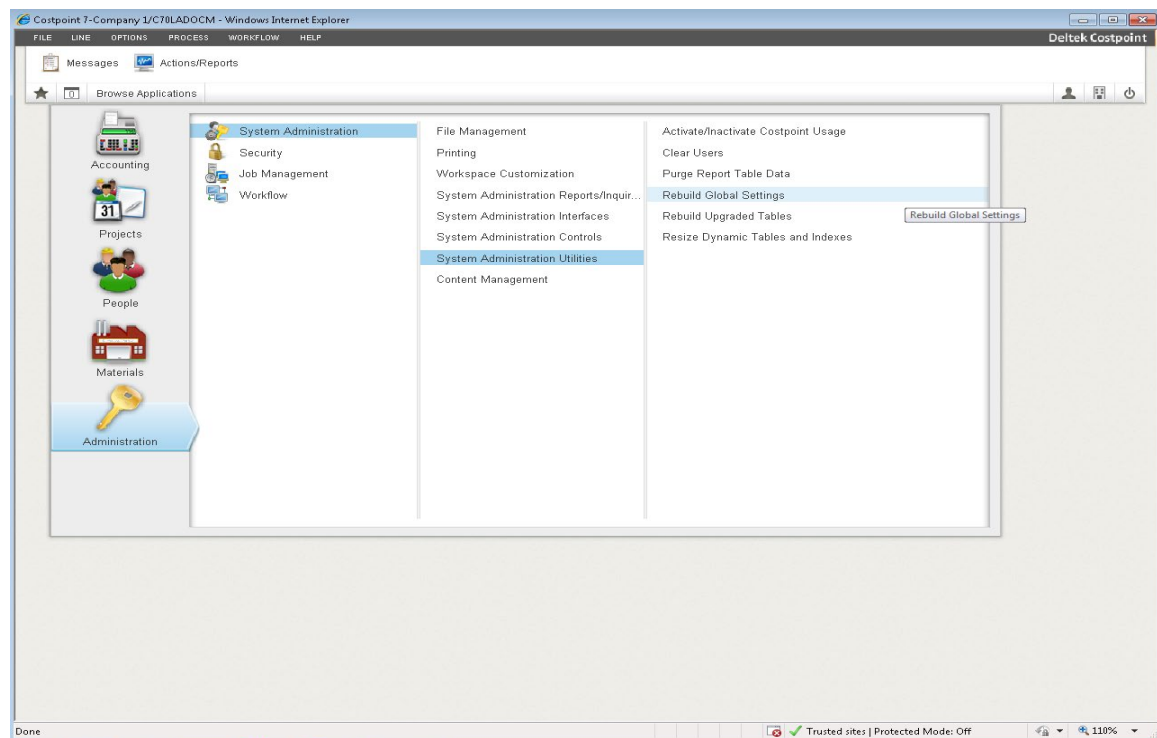
3. Click **Log In**.
4. Contact Custom Solutions at Deltek if the following message displays:

"Warning: The custom programs and the database version are not compatible. The custom programs may not work properly. Please contact Custom Solutions at Deltek. Do you want to continue with the login?"
5. Click **OK** and a screen similar to the following displays:

## Costpoint 7.1.1 Initial Log In Configuration

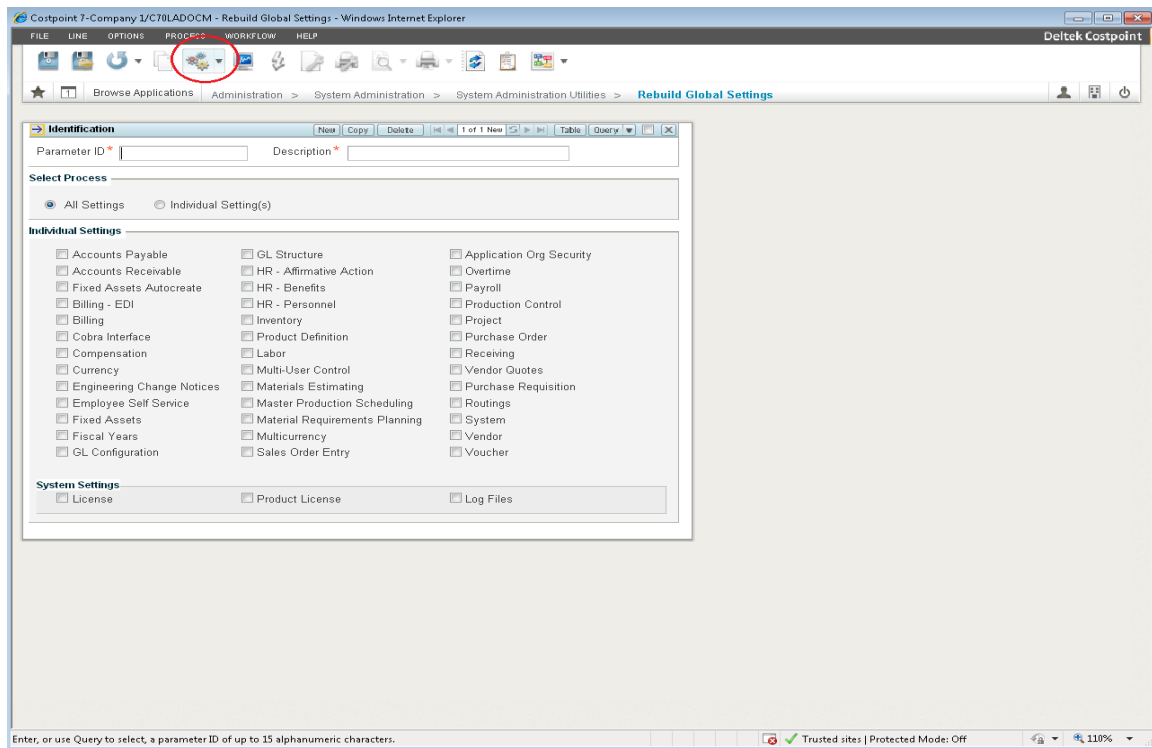


- From the main menu screen, click **Administration » System Administration » System Administration Utilities » Rebuild Global Settings**.



- On the Rebuild Global Settings screen, click **Default Action**.

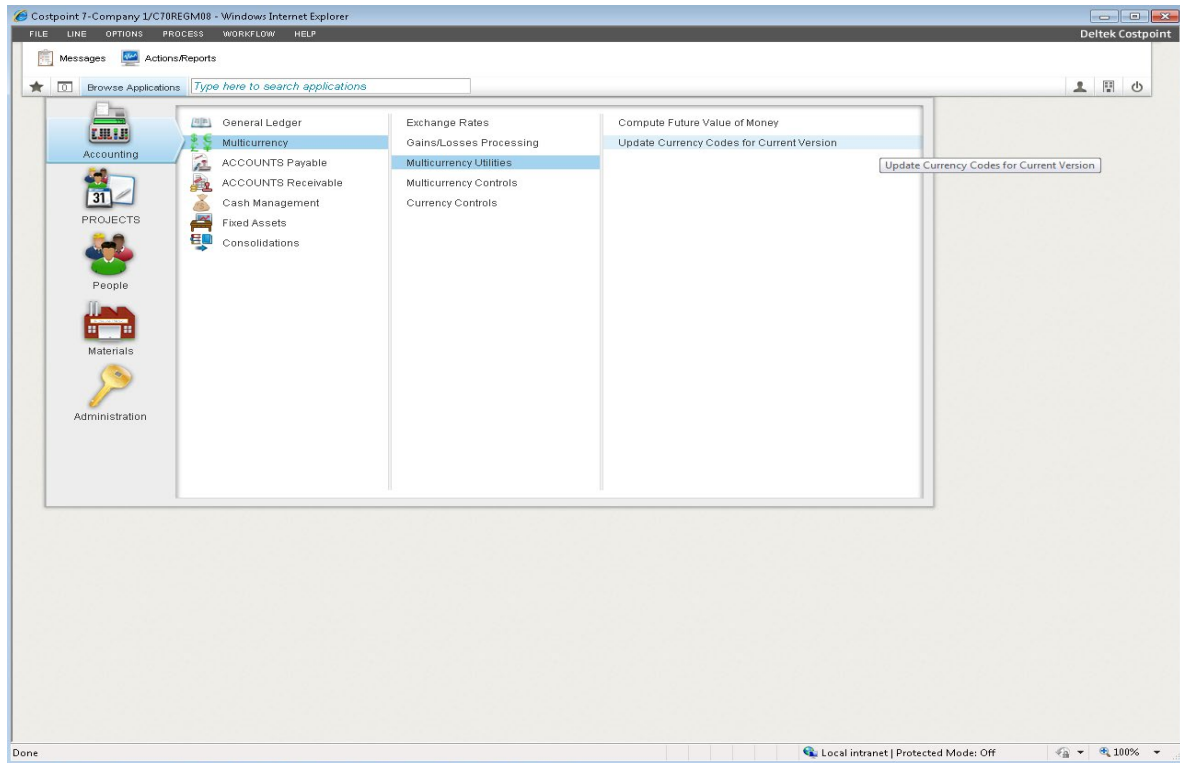
## Costpoint 7.1.1 Initial Log In Configuration



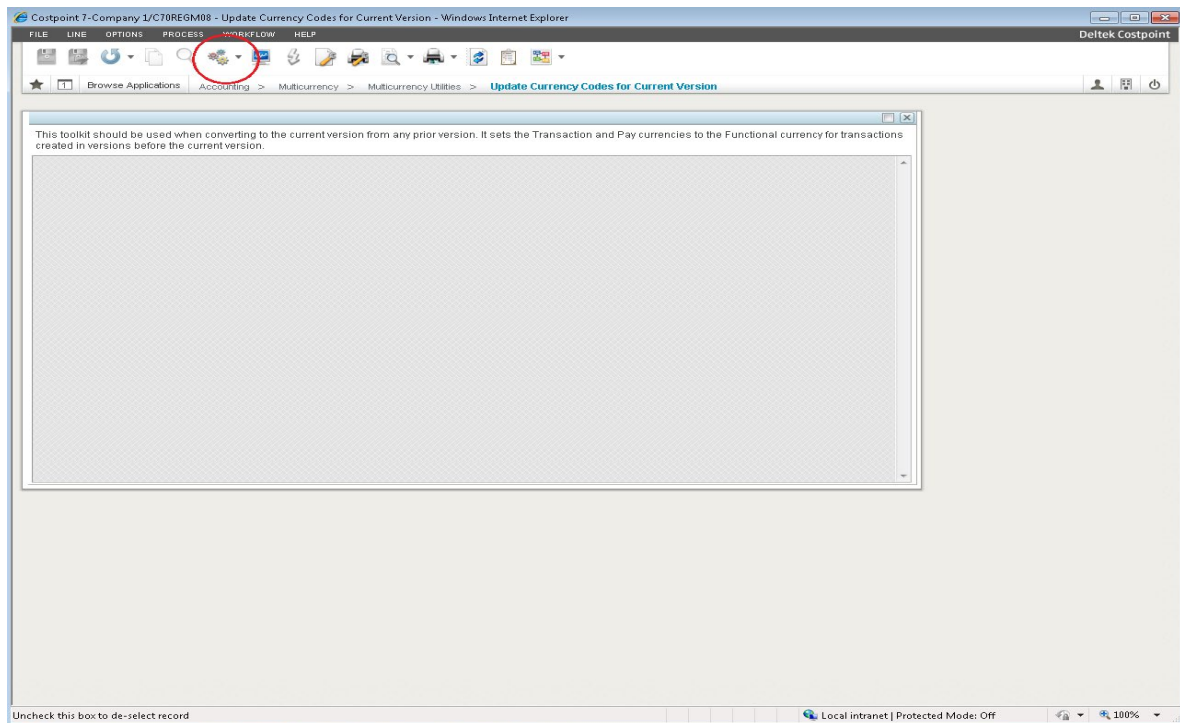
**Note:** If you click the right side (down arrow) of the **Default Action** button, you must also select **Reload Settings**.

8. On the Processing Complete screen, click **OK**.
9. Click **File » Close Application** to close the Rebuild Global Settings screen, and click **OK** on the unsaved changes message.
10. From the main menu screen, click **Accounting » Multicurrency » Multicurrency Utilities » Update Currency Codes for Current Version**.

## Costpoint 7.1.1 Initial Log In Configuration



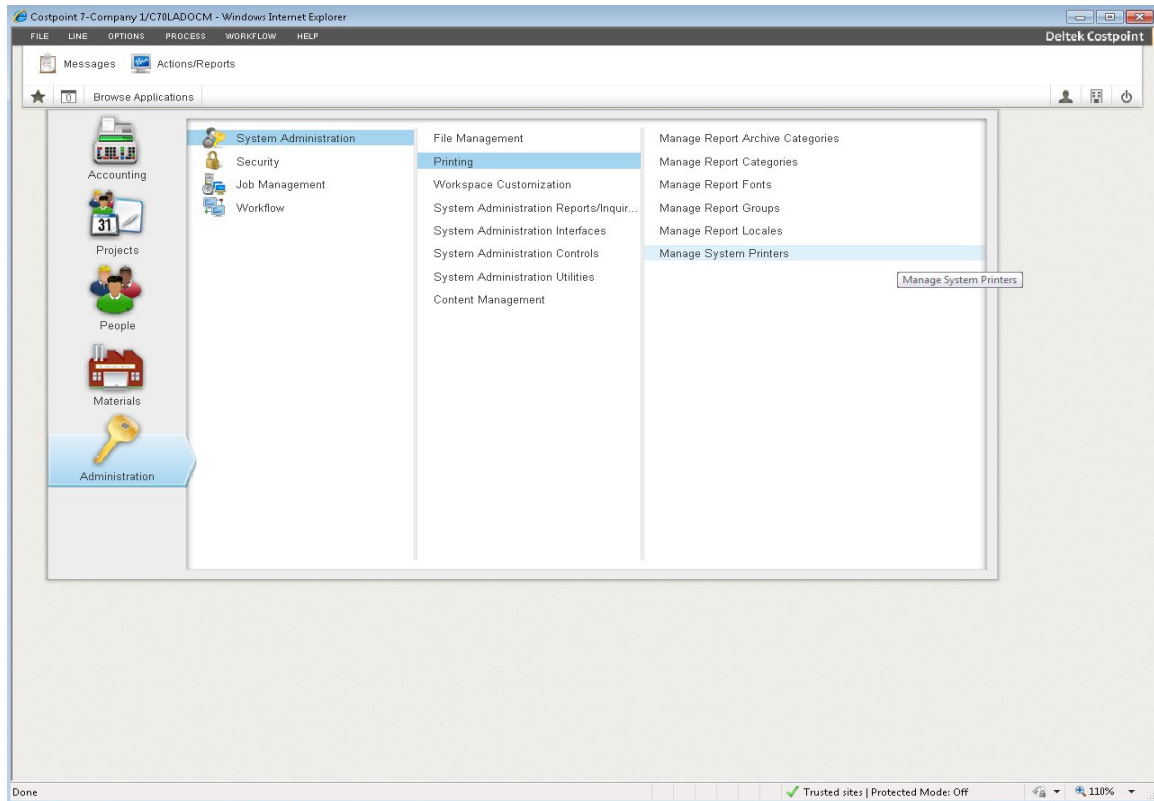
11. On the Update Currency Codes for Current Version screen, click **Default Action**.



**Note:** If you click the right side (down arrow) of the **Default Action** button, you must also select **Initialize Currency Codes for Version**.

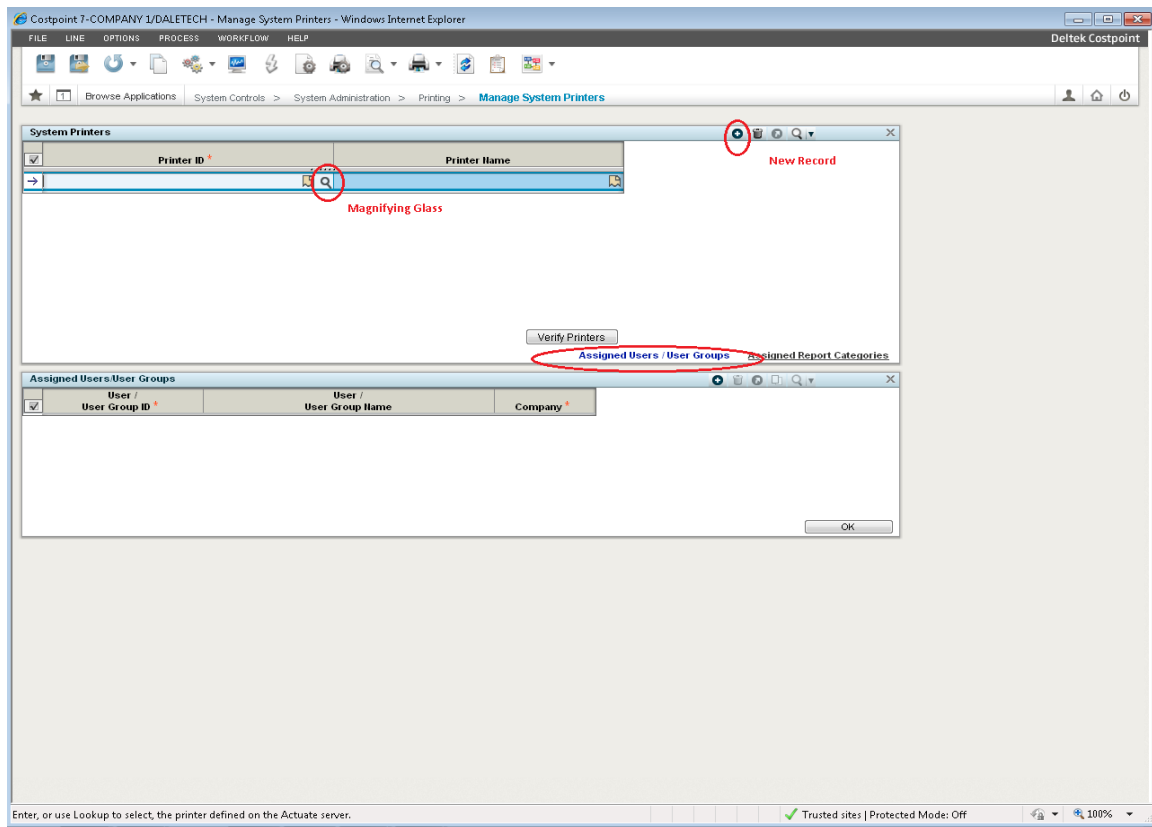


12. On the Processing Complete screen, click **OK**.
13. Click **File » Close Application** to close the Update Currency Codes for Current Version screen.
14. From the main menu screen, click **Administration » System Administration » Printing » Manage System Printers**.



15. On the Manage System Printers screen displays, click **New Record (+)**.

## Costpoint 7.1.1 Initial Log In Configuration



16. Complete the following fields.

Field Name	Action
<b>Printer ID</b>	Click the magnifying glass (circled above in red). This displays all printer objects that are available on your Application Server. Select the appropriate printer object by clicking in the check box to the left of the printer object name and then clicking <b>SELECT</b> .
<b>Printer Name</b>	Enter a descriptive name for the printer object.

17. Select the **Assigned Users/User Groups** link located in the lower right corner of the System Printers section.

18. When the focus switches to the Assigned Users/User Groups section at the bottom half of your browser window, click **New Record (+)**, and complete the following fields:

Field Name	Action
<b>User/User Group ID or User/User Group Name</b>	Click the magnifying glass for one of these fields. Select a User/User Group that should have access to the printer object you specified above.
<b>Company</b>	Click the magnifying glass. Select a Company for this User/User Group.

19. Click **SELECT**. You must repeat Step 18 for each User/User Group that you want to assign the printer object that you specified in Step 16.
20. Click **Save**, and click **OK** when the following message displays: "Record modifications completed without error."  
  
You must repeat items 14-20 for any printer objects on your Application server that you wish to make available to your Costpoint 7.1.1 system users.
21. Click **File » Log-out** to exit out of Costpoint 7.1.1.
22. Close your Web browser.

## Verify Costpoint 7.1.1 Printer Configuration

The steps to verify your Costpoint 7.1.1 printers are detailed in this section.

This step can be performed from any Windows client workstation that has TCP/IP access to your Costpoint 7.1.1 WebLogic application server.

**To verify your Costpoint 7.1.1 printers, complete the following steps:**

1. Open your Web browser, and enter one of the following URLs:

**http://<AppServerIPAddress or ComputerName>:<Port>**

**http://<WebServerIPAddress or ComputerName>/cpweb**

Where <AppServerIPAddress or ComputerName> identifies your Costpoint 7.1.1 WebLogic application server and <Port> identifies the unique port number that your Costpoint 7.1.1 WebLogic application server uses to listen for connections. You specified this port value during the Costpoint 7.1.1 software installation. The default is 7009 (for example, **http://10.2.2.154:7009**).

Or where <WebServerIPAddress or ComputerName> identifies your Costpoint 7.1.1 IIS Web server (for example, **http://10.2.2.156/cpweb**).

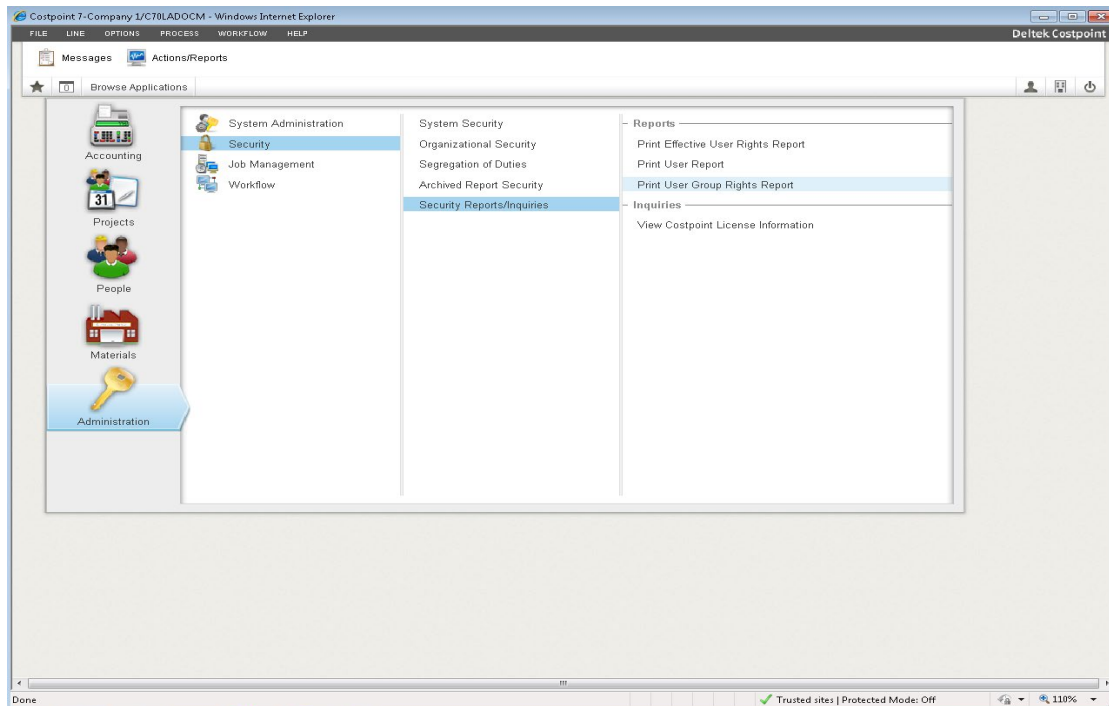
2. On the Deltek Costpoint 7 Welcome screen, complete the following fields.

Field Name	Action
<b>Username</b>	Enter <b>CPSUPERUSER</b> .
<b>Password</b>	Enter the CPSUPERUSER user password. The default is <b>password</b> .
<b>System</b>	Enter <b>&lt;Your_System_Name&gt;</b> , where <b>&lt;Your_System_Name&gt;</b> identifies the system name you assigned to your Costpoint 7.1.1 system during the Application Server Installation process. Typically, customers use a system name that is identical to their Costpoint 7.1.1 Database name, DELTEKCP.
<b>SHOW ADDITIONAL CRITERIA</b>	Click <b>+</b> to display these additional fields: <ul style="list-style-type: none"> <li>▪ <b>Application</b> — Accept the blank default value, or enter a specific Costpoint 7.1.1 application. For example, <b>COSTPOINT MENU</b>.</li> <li>▪ <b>Company</b> — Enter your company ID. For example, 1.</li> </ul>

Field Name	Action
	<ul style="list-style-type: none"> <li><b>Validation Frequency</b> — Accept the default drop-down value, <b>Field</b>. After you have successfully logged in to Costpoint 7.1.1, review the online help for a detailed explanation of the value you can select for this field.</li> </ul>
<b>Remember log in information</b>	Select this check box to have the system remember your login information. This option is not selected by default.

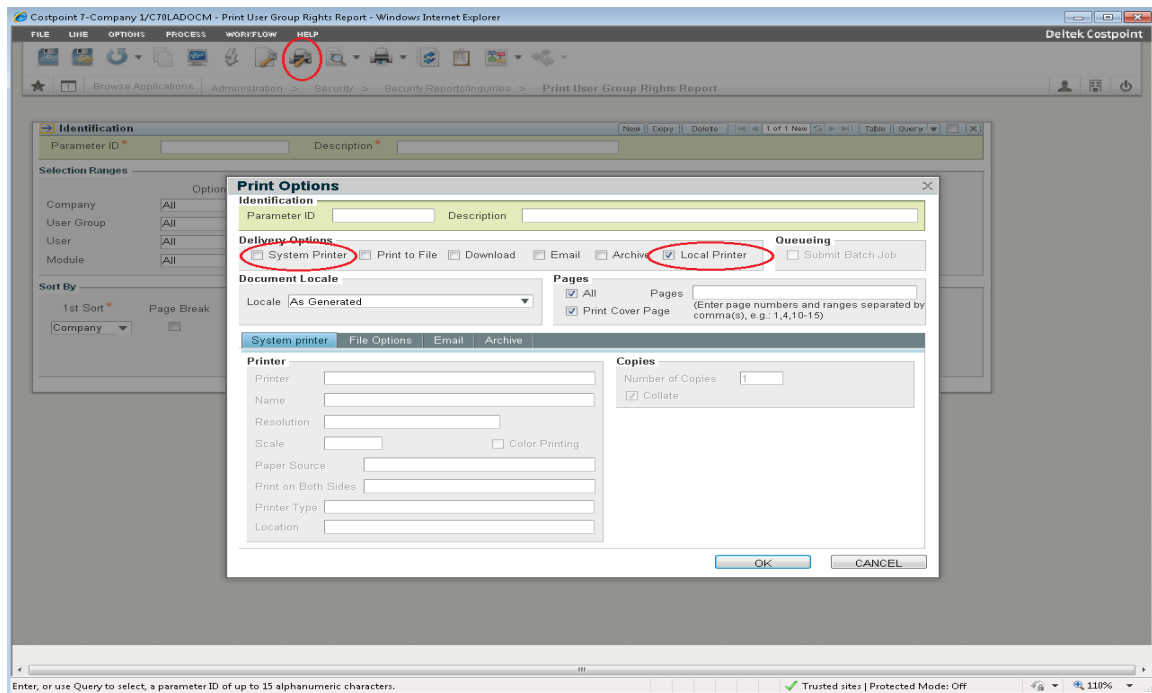
- Click **Log In**.
- Click **OK** if the following message displays:  

“Warning: The custom programs and the database version are not compatible. The custom programs may not work properly. Please contact Custom Solutions at Deltek. Do you want to continue with the login?”
- From the main menu screen, click **Administration » Security » Security Reports/Inquiries » Print User Group Rights Report**.

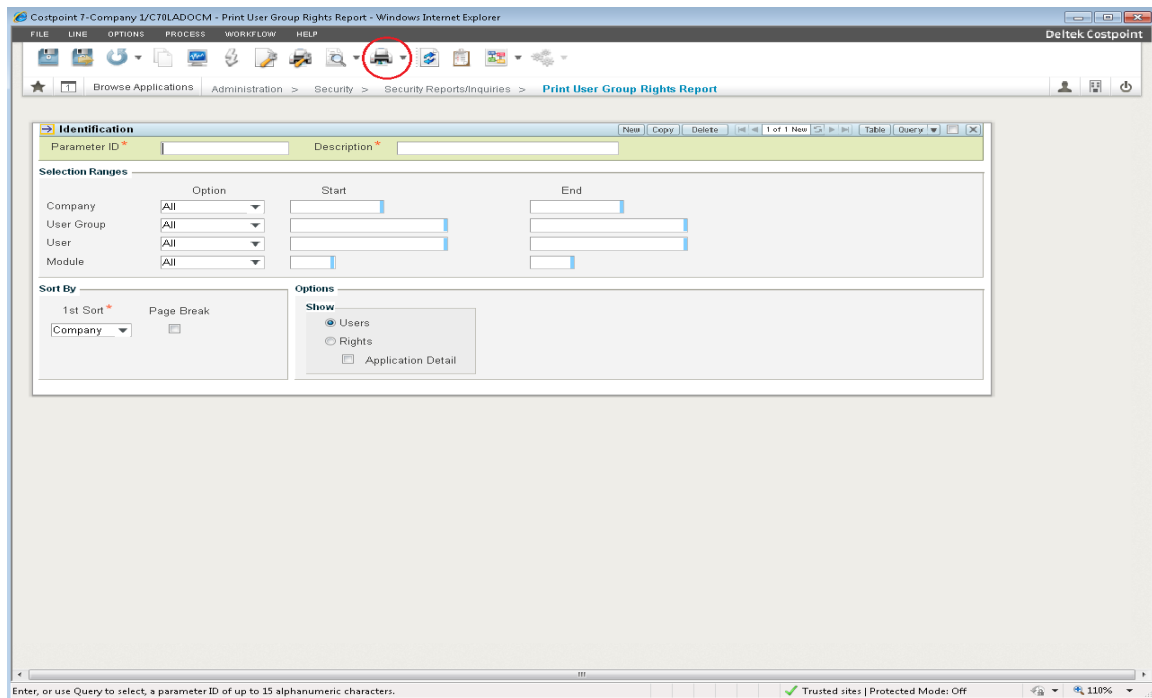


- On the Print User Group Rights Report screen, click **Print Options**.

## Costpoint 7.1.1 Initial Log In Configuration



7. On the Print Options screen, select the **System Printer** or the **Local Printer** Delivery Option, depending on how you setup your Application Server printer, and click **OK**.
8. On the Print User Group Rights Report screen, click **Print Default Report**.



If the User Group Rights Report prints correctly, your Costpoint 7.1.1 Application Server printer setup is working properly. If the report does not print correctly, please contact Deltak Costpoint 7.1.1 Technical Support.

9. Click **File » Close Application** to close the Print User Group Rights Report screen.
10. Click **OK** when the following message displays:  
 “You have unsaved changes. Select Cancel to go back and save changes or select OK to discard changes and close the application”
11. You can now begin to configure and use the Costpoint 7.1.1 system. Please refer to the “Related Documentation” section for a list of all documentation included with the Costpoint 7.1.1 release.  
 Deltek strongly recommends that you change the CPSUPERUSER user’s password. Please refer to the “Change CPSUPERUSER User’s Password” section for instructions.

## Deploy Costpoint as a Progressive Web App

A Progressive Web App (PWA) is a web application which uses a set of latest technologies to incorporate the features which were historically associated with either browser or native applications. As a result, the PWA provides the end user with the best of both worlds.

The Costpoint PWA application provides the same rich set of capabilities regardless of the device. For example, if your company configured SAML or FIDO authentication for desktops, it will work on mobile devices, with no extra steps or additional deployment/configuration necessary. If you developed an Extension, it will work on a desktop, tablet, or phone. If your users access Costpoint from your company Azure portal using SSO, it will equally work on a laptop or phone.

As Costpoint is being constantly enhanced, you can be confident that your company and your users will always have access to the latest features and functionality while using Costpoint PWA, regardless of the device used to access Costpoint.

From an IT perspective, the use of Costpoint PWAs on mobile devices have these additional benefits:

- The instructions to install Costpoint PWA on your device (similar to installing a native app from a store) describe a manual process. However, because it is not required to publish PWA applications to the store, IT can push Costpoint PWA application to your employee devices using standard MDM solutions (for example, MobileIron).
- If your company has an internal company store which employees should use to download applications (for example, using MobileIron store), a PWA application can be published in your company store.
- IT has full control over the version of Costpoint used by users, including the PWA application deployed to user devices. When your company IT or Deltek Cloud deploys any new update to Costpoint, the PWA applications on user devices will refresh automatically and seamlessly, always staying in sync with the version of Costpoint used by your organization.
- There is no need to worry about backward or forward compatibility issues with the version of applications deployed on user devices, and no need to ask or expect users to download an updated version of the application from the company store.

**Note:** Deploying a PWA application using the steps outlined below does not only create an icon on your home screen but also generates a real native application container on your device. For example, you can tap the standard **App info** option for the Costpoint icon on an Android device and it will show that the CP icon you just created is a native application, downloaded from Google Play store.

## Deploy Costpoint PWA on an Android Device

You can install the Costpoint PWA from the Costpoint Login page or the Chrome browser menu.

**To deploy Costpoint PWA via the Costpoint Login page:**

1. On your Android device, open the Costpoint Login page in the Chrome browser.
2. Tap **Add to Home screen** link (below the login information)
3. Name the Costpoint PWA, and then click **Add**.

You can now tap the icon on your Home screen to launch Costpoint as a standalone web app.

**To deploy Costpoint PWA via the Chrome browser menu:**

1. On your Android device, open the Costpoint Login page in the Chrome browser.
2. Tap the menu (three vertical dots) in the upper-right corner.
3. Tap **Add to Home screen**.
4. Name the Costpoint PWA, and then tap **Add**.

You can now tap the icon on your Home screen to launch Costpoint as a standalone web app.

## Deploy Costpoint PWA on an iPhone or iPad

**To deploy Costpoint PWA:**

1. On your iPhone or iPad, open the Costpoint Login page in the Safari browser.
2. Tap the **Share** button in Safari.
3. Tap the **Add to Home Screen** icon.
4. Tap **Add** in the upper-right corner.
5. Name the Costpoint PWA.
6. Tap **Add** in the upper-right corner.

You can now tap the icon on your Home screen to launch Costpoint as a standalone web app.

## Deploy Costpoint PWA on a Desktop

Deploying the Costpoint PWA on your desktop creates a desktop shortcut to the application. When you access Costpoint using the app, more data is visible on your screen. Browser elements, like the address bar, tabs, and other controls, are removed, offering a clearer view of your Costpoint data.

**Note:** Support for Microsoft Edge is coming soon.

**To deploy Costpoint PWA in Google Chrome:**

1. Open the Costpoint Login page.
2. Install Costpoint PWA using one of the following three options:
  - a. In the Address bar, click **+** (**Install Costpoint**) » **Install**.
  - b. In the browser menu (three vertical dots), click **Install Costpoint** » **Install**.
  - c. On the Costpoint Login page, click **Add to Home Screen** » **Install**

# Post-Installation Configuration

## Apply Latest Costpoint 7.1.1 Hot Fixes

After you have a functioning Costpoint 7.1.1 environment, follow the **DeltekCostpoint711DeployingHotFixes.pdf** installation document to install the latest Costpoint 7.1.1 hot fixes.

## WebLogic Server Configuration

The following methods to start and stop your Costpoint 7.1.1 WebLogic Server are detailed in this section:

- Starting the Costpoint 7.1.1 WebLogic Server as a Windows service
- Starting the Costpoint 7.1.1 WebLogic Server from the Windows Start menu
- Starting the Costpoint 7.1.1 WebLogic Server from a Windows Command Prompt
- Stopping the Costpoint 7.1.1 WebLogic Server as a Windows service
- Stopping the Costpoint 7.1.1 WebLogic Server from a Web browser

### Start Costpoint 7.1.1 WebLogic Server as a Windows Service

The steps to start your Costpoint 7.1.1 WebLogic Server as a Windows service are detailed in this section.

This step must be performed on your Costpoint 7.1.1 WebLogic application server.

**To start your Costpoint 7.1.1 WebLogic Server when it is installed as a Windows service, complete the following steps:**

1. Click **Start » Administrative Tools » Services**.
2. On the Services window, scroll down the **Services** list, right-click the **Costpoint 7.1.1** service, and click **Properties** on the shortcut menu.
3. On the Costpoint 7.1.1 Properties screen, click the General tab.
4. Click **Start** to start the Costpoint 7.1.1 service.

The service will indicate that it started immediately. However, please note that it will take several minutes for the Costpoint 7.1.1 service to fully initialize. After starting the service, wait several minutes before attempting to connect to the software.

If you encounter problems with the Costpoint 7.1.1 service, check the C:\Deltek\Costpoint\71\logs\DEServer.log file and report any errors to Deltek Costpoint 7.1.1 Technical Support.

5. Click **OK** to close the Costpoint 7.1.1 Properties screen.
6. Close the Services window.

### Start Costpoint 7.1.1 WebLogic Server from the Start Menu

The steps to start your Costpoint 7.1.1 WebLogic Server from the Windows Start menu are detailed in this section.

This step must be performed on your Costpoint 7.1.1 WebLogic application server.



**To start your Costpoint 7.1.1 WebLogic Server from the Windows Start menu, complete the following steps:**

1. Right-click **Start**, select **Search**, enter **Costpoint 7.1.1**, right-click **Start Costpoint 7.1.1**, and click **Run as administrator**.

**Note:** Due to the enhanced security in Windows Server, it is advised to that you use the **Run as Administrator** option when launching this command even if the logged in user has local administrative rights.

2. This will open a Windows Command Prompt and launch a command script that starts the Costpoint 7.1.1 WebLogic Server. When the Windows Command Prompt window opens, you will see a series of messages scrolling down the screen.

It will take several minutes for the Costpoint 7.1.1 WebLogic Server to start.

3. If your Costpoint 7.1.1 WebLogic Server starts successfully, the following message displays on the lower portion of the command line shell window:

<The server started in RUNNING mode. >

If your Costpoint 7.1.1 WebLogic Server encounters errors during the startup process, the message will not display, and the command line shell (DOS window) may terminate.

4. If you do not receive the message or the command line shell (DOS window) terminates, you should:
  - Make a copy of the C:\Deltek\Costpoint\71\logs\DEServer.log file.
  - Contact Deltek Costpoint 7.1.1 Technical Support.

## Start Costpoint 7.1.1 WebLogic Server from the Windows Command Prompt

The steps to start your Costpoint 7.1.1 WebLogic Server from a Windows Command Prompt are detailed in this section.

This step must be performed on your Costpoint 7.1.1 WebLogic application server.

**To start your Costpoint 7.1.1 WebLogic Server from a command line shell, complete the following steps:**

1. Open a Windows Command Prompt, navigate to the **C:\Deltek\Costpoint\71\bin** folder, and launch the following command script:

StartCPWeb

You will see a series of messages scrolling down the screen. It takes several minutes for the Costpoint 7.1.1 WebLogic Server to start.

- If your Costpoint 7.1.1 WebLogic Server starts successfully, the following message is displayed on the lower portion of the command line shell window:  
<The server started in RUNNING mode. >
- If your Costpoint 7.1.1 WebLogic Server encounters errors during the startup process, the message will not display, and the command line shell (DOS window) may terminate.
- If you do not receive the message or the command line shell (DOS window) terminates, you should:

2. Make a copy of the C:\Deltek\Costpoint\71\logs\DEServer.log file.
3. Contact Deltek Costpoint 7.1.1 Technical Support.

## Stop Costpoint 7.1.1 WebLogic Server as a Windows Service

The steps to stop your Costpoint 7.1.1 WebLogic Server when it is running as a Windows service are detailed in this section.

This step must be performed on your Costpoint 7.1.1 WebLogic application server.

**To stop your Costpoint 7.1.1 WebLogic Server when it is installed as a Windows service, complete the following steps:**

1. Click Windows **Start » Administrative Tools » Services**.
2. On the Services window opens, scroll down the Services list, right-click the **Costpoint 7.1.1** service, and click **Properties** on the shortcut menu.
3. On the Costpoint 7.1.1 Properties screen, click the General tab.
4. Click **Stop** to stop the Costpoint 7.1.1 service.
5. Click **OK** to close the Costpoint 7.1.1 Properties screen.
6. Close the Services window.

## Stop Costpoint 7.1.1 WebLogic Server from the Web Browser

The steps to stop your Costpoint 7.1.1 WebLogic Server from the WebLogic console are detailed in this section.

This step must be performed from a machine that has Web browser client access via TCP/IP to the Costpoint 7.1.1 WebLogic application server.

**To stop your Costpoint 7.1.1 WebLogic Server from a Web browser, complete the following steps:**

1. Open your Web browser and enter the following, case-sensitive, URL: **http://<IPAddress or ComputerName>:<Port>/console**, where **<IPAddress or ComputerName>** identifies your Costpoint 7.1.1 WebLogic application server and **<Port>** identifies the unique port number that your Costpoint 7.1.1 WebLogic application server uses to listen for connections.

You specified this port value during the Costpoint 7.1.1 software installation. The default port is **7009** (for example, **http://10.2.2.154:7009/console**).

2. When the WebLogic Server Administration Console screen displays, complete the following fields:

Field Name	Action
<b>Username</b>	Enter <b>system</b> .
<b>Password</b>	Enter the password for the WebLogic Administrative user. The default password is <b>weblogic</b> .

3. Click **Login**.
4. On the Welcome system screen in the left pane, under **Domain Structure**, select the **delteke** node of the hierarchical tree.

5. On the Settings for delteke screen, select the **Control** tab.
6. Select the check box to the left of the **DEServer(admin)** field.
7. Click **Shutdown**, and then click **Force Shutdown Now**.
8. When the Domain Life Cycle Assistant screen is displayed, click **Yes**.
9. Close the Web browser screen.

## Change CPSUPERUSER User's Password

The steps to change the CPSUPERUSER users password are detailed in this section.

This step may be performed from any Windows client workstation that has TCP/IP access to your Costpoint 7.1.1 WebLogic **application** server.

**To change the CPSUPERUSER user's password, complete the following steps:**

1. Open your Web browser, and enter one of the following URLs:

**http://<AppServerIPAddress or ComputerName>:<Port>**

**http://<WebServerIPAddress or ComputerName>/cpweb**

Where <AppServerIPAddress or ComputerName> identifies your Costpoint 7.1.1 WebLogic application server and <Port> identifies the unique port number that your Costpoint 7.1.1 WebLogic application server uses to listen for connections. You specified this port value during the Costpoint 7.1.1 software installation. The default is 7009. For example, **http://10.2.2.154:7009**.

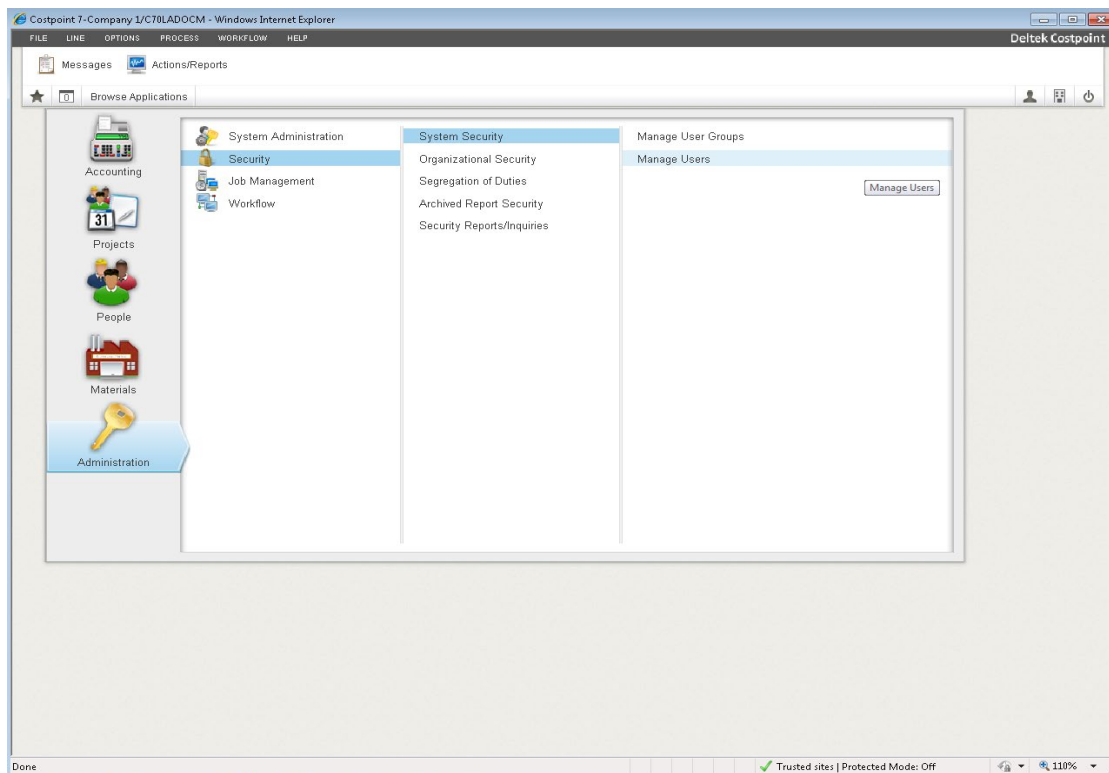
Or where <WebServerIPAddress or ComputerName> identifies your Costpoint 7.1.1 IIS Web server. For example, **http://10.2.2.156/cpweb**.

2. On the Deltek Costpoint 7 Welcome screen, complete the following fields.

Field Name	Action
<b>Username</b>	Enter <b>CPSUPERUSER</b> .
<b>Password</b>	Enter the CPSUPERUSER user's password. The default is <b>password</b> .
<b>System</b>	Enter <b>&lt;Your_System_Name&gt;</b> , where <b>&lt;Your_System_Name&gt;</b> identifies the system name you assigned to your Costpoint 7.1.1 system during the Application Server Installation process. Typically, customers use a system name that is identical to their Costpoint 7.1.1 Database name, DELTEKCP.
<b>SHOW ADDITIONAL CRITERIA</b>	Click <b>+</b> to display these additional fields: <ul style="list-style-type: none"> <li>▪ <b>Application</b> — Accept the blank default value, or enter a specific Costpoint 7.1.1 application. For example, COSTPOINT MENU.</li> <li>▪ <b>Company</b> — Enter your company ID. For example, 1.</li> <li>▪ <b>Validation Frequency</b> — Accept the default drop-down value, <b>Field</b>. After you have successfully logged in to</li> </ul>

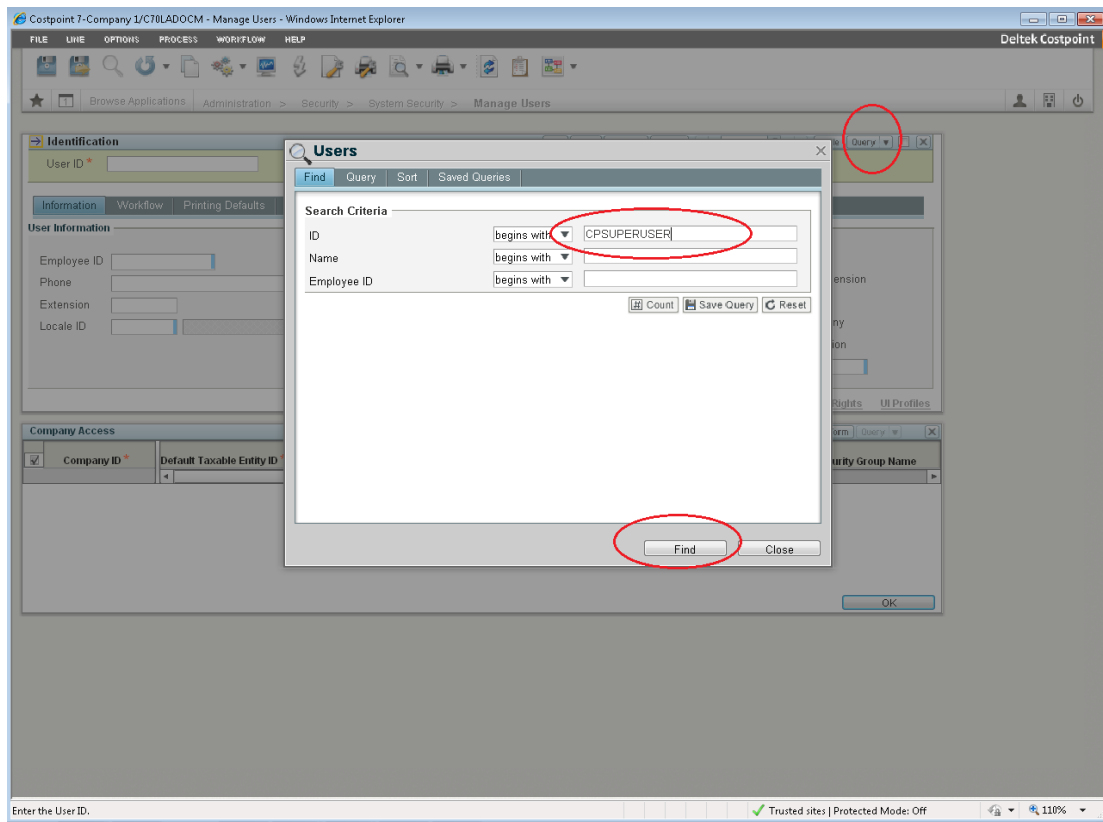
Field Name	Action
	Costpoint 7.1.1, review the online help for a detailed explanation of the value you can select for this field.
<b>Remember log in information</b>	Select this check box to have the system remember your login information. This option is not selected by default.

- Click **Log In**.
- Click **OK** if the following message displays:  
 “Warning: The custom programs and the database version are not compatible. The custom programs may not work properly. Please contact Custom Solutions at Deltek. Do you want to continue with the login?”
- From the main menu screen, click **Administration » Security » System Security » Manage Users**.



- On the Manage Users screen, click **Query**.

## Post-Installation Configuration



7. On the Users screen, enter CPSUPERUSER in the **ID** field, and click **Find**.

## Post-Installation Configuration

Costpoint 7-Company 1/C70LADOCM - Manage Users - Windows Internet Explorer

FILE LINE OPTIONS PROCESS WORKFLOW HELP

Browse Applications Administration > Security > System Security > Manage Users

Identification

User ID \* CPSUPERUSER User Name \* CostPoint Super User

Information Workflow Printing Defaults **Authentication** User Interface

Authentication Settings

Authentication Method \* Costpoint Database

Costpoint Password  Generate Random Password

Verify Password

Active Directory or Certificate ID

☒ Allow Application Access via Integration Services

Company Access Assigned User Groups Module Rights Application Rights UI Profiles

Company Access

Company ID *	Default Taxable Entity ID *	Org Security Group ID	Labor	SSN	Cost	Price	Company Name	Org Security Group Name
1	ALL		<input type="checkbox"/>	<input type="checkbox"/>	<input type="checkbox"/>	<input type="checkbox"/>	Company 1	Group Code to all Orgs
APPLEJACK2	1234567869	ALL	<input type="checkbox"/>	<input type="checkbox"/>	<input type="checkbox"/>	<input type="checkbox"/>	Apple Jacks 2	ALL orgs
3	54-5665897	3ALL	<input type="checkbox"/>	<input type="checkbox"/>	<input type="checkbox"/>	<input type="checkbox"/>	European Exchange Company	Comp 3 OrgSec Grp--AllOrg
MTCORP	2323		<input type="checkbox"/>	<input type="checkbox"/>	<input type="checkbox"/>	<input type="checkbox"/>	MTCORP	
WEB	WEIN		<input type="checkbox"/>	<input type="checkbox"/>	<input type="checkbox"/>	<input type="checkbox"/>	Web Company	
711BIGBYTE	711BIG1	ALL	<input type="checkbox"/>	<input type="checkbox"/>	<input type="checkbox"/>	<input type="checkbox"/>	711 Big Byte	All

Enter the user's Costpoint password.

Trusted sites | Protected Mode: Off

- After the CPSUPERUSER user information loads in the Manage Users screen, click the Authentication tab, and complete the following fields.

Field Name	Action
<b>Authentication Method</b>	Accept the default value, <b>Costpoint Database</b> , from the drop-down list.
<b>Costpoint Password</b>	Enter a password for the CPSUPERUSER user. The password is case-sensitive and must be between 8 and 20 characters in length.
<b>Verify Password</b>	Re-enter the password for the CPSUPERUSER user.

- Click **Save**.
- After the confirmation message is displayed at the bottom of the screen, click **File » Close Application** to close the Enter/Manage Users screen.
- Click **File » Log-out** to exit out of Costpoint 7.1.1.
- Close your Web browser.
- Open your Web browser, and enter one of the following URLs:  
**http://<AppServerIPAddress or ComputerName>:<Port>**  
**http://<WebServerIPAddress or ComputerName>/cpweb**

Where <AppServerIPAddress or ComputerName> identifies your Costpoint 7.1.1 WebLogic application server and <Port> identifies the unique port number that your Costpoint 7.1.1 WebLogic application server uses to listen for connections. You specified this port value during the Costpoint 7.1.1 software installation. The default is 7009 (for example, **http://10.2.2.154:7009**).

Or where <WebServerIPAddress or ComputerName> identifies your Costpoint 7.1.1 IIS Web server (for example, **http://10.2.2.156/cpweb**).

14. On the Deltek Costpoint 7 Welcome screen, complete the following fields:

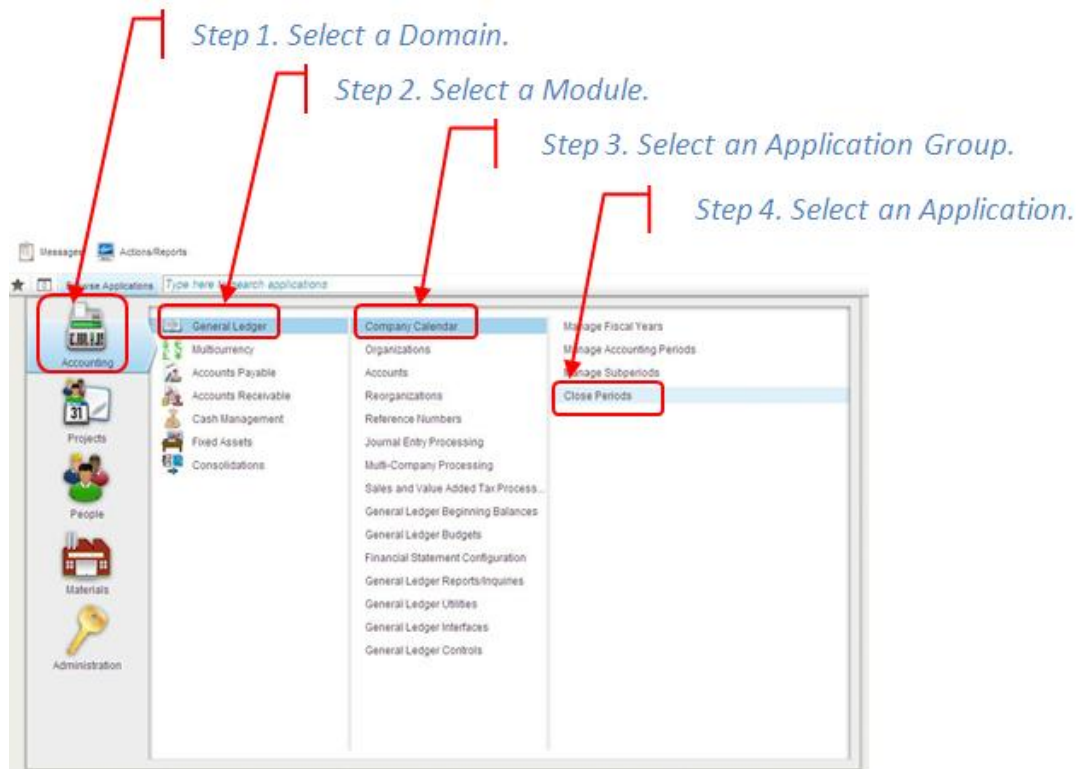
Field Name	Action
<b>Username</b>	Enter <b>CPSUPERUSER</b>
<b>Password</b>	Enter the CPSUPERUSER user's password. The default is <b>password</b> .
<b>System</b>	Enter <b>&lt;Your_System_Name&gt;</b> , where <b>&lt;Your_System_Name&gt;</b> identifies the system name you assigned to your Costpoint 7.1.1 system during the Application Server Installation process. Typically, customers use a system name that is identical to their Costpoint 7.1.1 Database name, DELTEKCP.
<b>SHOW ADDITIONAL CRITERIA</b>	Click <b>+</b> to display these additional fields: <ul style="list-style-type: none"><li>▪ <b>Application</b> — Accept the blank default value, or enter a specific Costpoint 7.1.1 application. For example, <b>COSTPOINT MENU</b>.</li><li>▪ <b>Company</b> — Enter your company ID. For example, 1.</li><li>▪ <b>Validation Frequency</b> — Accept the default drop-down value, <b>Field</b>. After you have successfully logged in to Costpoint 7.1.1, review the online help for a detailed explanation of the value you can select for this field.</li></ul>
<b>Remember log in information</b>	Select this check box to have the system remember your login information. It is selected by default.

15. Click **Log In**.

16. Click **OK** if the following message displays:

"Warning: The custom programs and the database version are not compatible. The custom programs may not work properly. Please contact Custom Solutions at Deltek. Do you want to continue with the login?"

A screen similar to the following displays. You can begin accessing and using the Costpoint 7.1.1 system:



If you are unable to log in to Costpoint 7.1.1, contact Deltek Costpoint 7.1.1 Technical Support.

## Secure Sockets Layer (SSL) Encryption with Costpoint 7.1.1 Implementation

Information regarding the Costpoint Web support for SSL encryption is detailed in this section. This section also provides references to additional resources that you can use to learn more about implementing SSL with Costpoint 7.1.1.

### Costpoint Web's Support for SSL

Costpoint 7.1.1 was tested against and supports SSL implemented on its WebLogic Server and Microsoft Internet Information Server (IIS) components.

**Note:** The IIS component is optional in the Costpoint Web environment. If you have chosen to deploy IIS with your Costpoint Web environment, you may implement SSL on both your IIS and WebLogic Server components.

SSL requirements will vary from customer to customer. Consequently, this section does not provide specific instructions for implementing SSL on either your WebLogic Server or IIS components. Instead, this section provides third-party informational resources that you can use to learn about and implement SSL with your Costpoint 7.1.1 environment.



## Informational Resources for Implementing SSL

You can implement SSL on either or both of your Costpoint 7.1.1 system's IIS and WebLogic Server components. For help on implementing SSL, please refer to the following URLs:

- WebLogic Server
  - [http://docs.oracle.com/cd/E24329\\_01/web.1211/e24422/ssl.htm#SECMG384](http://docs.oracle.com/cd/E24329_01/web.1211/e24422/ssl.htm#SECMG384) — Oracle WebLogic Server documentation that provides an overview of WebLogic's domestic- and exportable-strength SSL licenses as well as step-by-step instructions for implementing SSL on your WebLogic Server.
- IIS
  - [http://technet.microsoft.com/en-us/library/cc732230\(WS.10\).aspx](http://technet.microsoft.com/en-us/library/cc732230(WS.10).aspx) — Microsoft TechNet article that provides an overview of using encryption with IIS 7.1.1 and specific instructions for configuring SSL.
  - <http://www.microsoft.com/technet/prodtechnol/WindowsServer2003/Library/IIS/5e0119a8-deed-4056-9592-e721a4889a71.mspx?mfr=true> — Microsoft TechNet article that provides an overview of using encryption with IIS 6.0 and specific instructions for configuring SSL.

In addition to consulting these informational resources, you may contact Deltek's Systems Solutions team to arrange assistance for implementing SSL with your Costpoint 7.1.1 system.

## Troubleshooting Instructions

Troubleshooting instructions for problems with the Database Tier installation are detailed in this section.

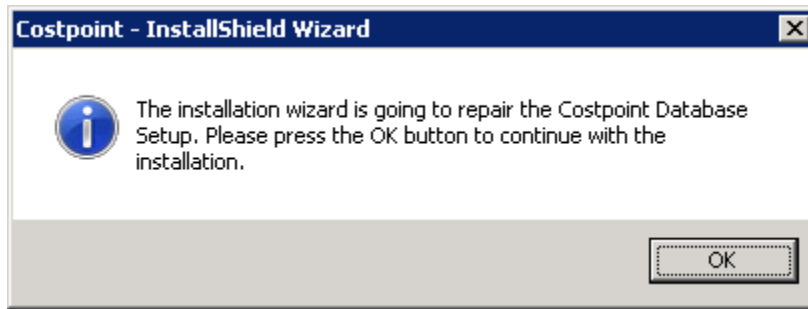
### How to Re-Run a Database Tier Installation that Failed

The steps to repair a Costpoint 7.1.1 Database Tier installation that has failed are detailed in this section.

**If you encounter a failure during the Database Tier installation process, complete the following steps:**

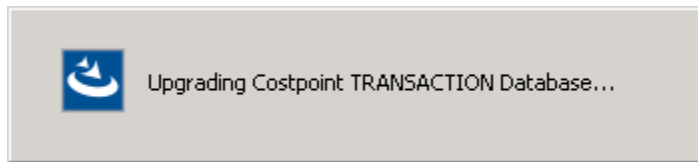
1. Click **OK** if, during the Database Tier Installation, you receive the following error message:  
"Failed upgrading Costpoint (ADMIN, SYSTEM, or TRANSACTION) Database"
2. After the installation has completed and a failed installation error message displays on the InstallShield Wizard Complete screen, select the **Yes, I want to view the log file** check box.  
This option opens the DeltekCostpoint711DatabaseTierInstallLog\_<date>\_<time>.txt file from the C:\Program Files\Deltek\Costpoint\7.1.1\logs directory).
3. Click **Finish** to exit the installation.
4. When the DeltekCostpoint711DatabaseTierInstallLog\_<date>\_<time>.txt file opens, run a search for the **"error"** search string. Report all errors found to Deltek Costpoint Technical Support.
5. **Only after you have fixed the error**, run the DeltekCostpoint711DatabaseTier.exe file to launch the Costpoint 7.1.1 Database Tier installation program again.

You will then see the following message:



6. Click **OK** to begin re-running the installation.

A message similar to the following displays:



Repairing the installation will re-run the installation from the beginning of that particular database user (schema). In other words, if Transaction fails, it will not re-run Admin or System, if System fails it will not re-run Admin, and so on.

Please do not interrupt the installation process.

7. After the installation has completed, select the **Yes, I want to view the log file** check box on the InstallShield Wizard Complete screen.

This opens the DeltekCostpoint711DatabaseTierInstallLog\_<date>\_<time>.txt file from the C:\Program Files\Deltek\Costpoint\7.1.1\logs directory).

8. Click **Finish** to exit the installation.
9. When the DeltekCostpoint711DatabaseTierInstallLog\_<date>\_<time>.txt file opens, search for the following keywords:
  - **“Error”** – Report any search results to Deltek Costpoint Technical Support. You can ignore **“DBCC execution completed. If DBCC printed error messages, contact your system administrator.”** search results.
  - **“New User Database Creation For Costpoint 7.1.1 TRANSACTION Completed Successfully”** and then the line **“\$DBSUCCESS=TRUE”**.
  - **“New Installation For Costpoint 7.1.1 ADMIN Completed Successfully”** and then the line **“\$DBSUCCESS=TRUE”**.
  - **“New Installation For Costpoint 7.1.1 META(SYSTEM) Completed Successfully”** and then the line **“\$DBSUCCESS=TRUE”**.

Finding the three items listed above indicates that you have successfully installed the Costpoint 7.1.1 Database Tier software and that you have created all of your users (schemas).

There will be a new log file created each time you have to repair the Database Tier install. You may need to look into multiple log files to find all of the above messages.

10. Return to the “Enable JDBC Distributed Transactions” section to continue with your Costpoint 7.1.1 installation.

## Latest Installer Files Download Instructions

The Costpoint Database Tier installer provides certain command-line options that can be invoked in special circumstances. To display the currently supported switches:

- Open Command Prompt in Administrator Mode
- Navigate to the directory where the installer is located
- Type **DeltekCostpoint711DatabaseTier.exe /?**

The instructions to download the latest Costpoint 7.1.1 Database upgrade and DeltekCostpointRequirementsINI files are detailed in this section. Each installer will automatically download the applicable files if your servers have internet access. If your servers do not, you will need to run this step for each installer.

You must perform this step on any machine that has Internet access.

**To download the required upgrade files, complete the following steps:**

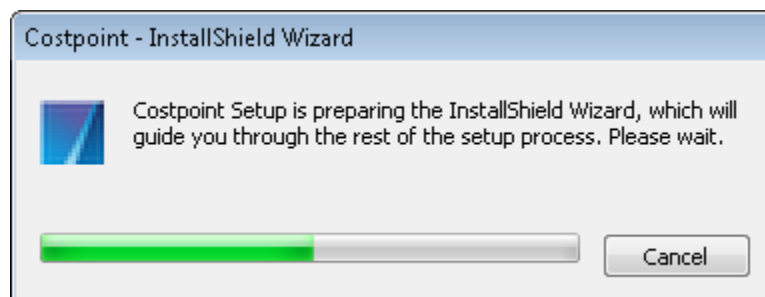
1. Run the applicable command to retrieve the files from DSM:

**DeltekCostpoint711DatabaseTier.exe /filedynamicdownload**

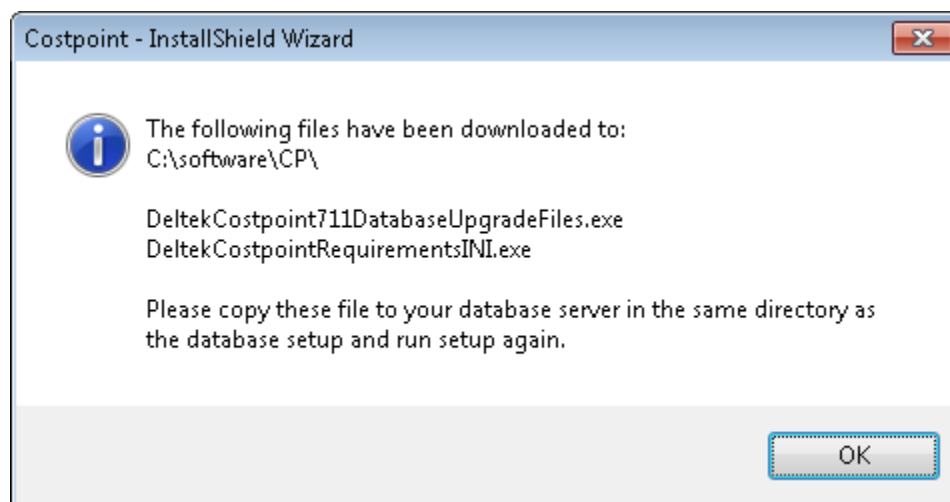
**DeltekCostpoint711ApplicationTier.exe /filedynamicdownload**

**DeltekCostpoint711WebTier.exe /filedynamicdownload**

You will see the following screen.



2. After the file downloads a message similar to the following displays, click **OK**.



3. Copy the downloaded **DeltekCostpoint711DatabaseUpgradeFiles.exe/**  
**DeltekCostpointRequirementsINI.exe** file(s) to your server, in the same folder as your '.exe'  
installer file.



---

## About Deltek

Better software means better projects. Deltek is the leading global provider of enterprise software and information solutions for project-based businesses. More than 23,000 organizations and millions of users in over 80 countries around the world rely on Deltek for superior levels of project intelligence, management and collaboration. Our industry-focused expertise powers project success by helping firms achieve performance that maximizes productivity and revenue. [www.deltek.com](http://www.deltek.com)