

Deltek Vision® 7.1

Interface to Microsoft Project 2010

June 27, 2013

While Deltek has attempted to verify that the information in this document is accurate and complete, some typographical or technical errors may exist. The recipient of this document is solely responsible for all decisions relating to or use of the information provided herein.

The information contained in this publication is effective as of the publication date below and is subject to change without notice.

This publication contains proprietary information that is protected by copyright. All rights are reserved. No part of this document may be reproduced or transmitted in any form or by any means, electronic or mechanical, or translated into another language, without the prior written consent of Deltek, Inc.

This edition published June 2013.

© 2013 Deltek, Inc.

Deltek's software is also protected by copyright law and constitutes valuable confidential and proprietary information of Deltek, Inc. and its licensors. The Deltek software, and all related documentation, is provided for use only in accordance with the terms of the license agreement. Unauthorized reproduction or distribution of the program or any portion thereof could result in severe civil or criminal penalties.

All trademarks are the property of their respective owners.

Contents

Background..... 1

Manual Scheduling 2

Enable “Automatic Scheduling” Mode in MSP 3

Background

Since the very early history of Deltek Vision, Deltek has had a two-way interface between Vision and Microsoft Project (MSP). This interface enables Vision users to import Plan data from MSP and export Plan data to MSP 2007 and 2010.

When Microsoft introduced MSP 2010, among the new features and behaviors, one new concept has had an impact on the Vision/MSP interface. That concept is “Manual Scheduling.”

Manual Scheduling

The following is an excerpt from a Microsoft TechNet article explaining the concept of **Manual Scheduling**:

Project 2010 changes how projects are scheduled. Factors such as task dependencies and the project calendar no longer automatically adjust task dates when a task is manually scheduled. This feature can be especially useful for early planning when the duration of a task might not yet be known. Users can place a manually scheduled task anywhere in their schedules, and Project 2010 will not move it. Project managers who are accustomed to automatic scheduling with past versions of Project can turn off the new manual scheduling feature, either for specific tasks or for the whole project. Some projects may require the powerful scheduling engine of Project to handle scheduling. (<http://technet.microsoft.com/en-us/library/cc178965.aspx>)

Since **Manual Scheduling** is a new concept for MSP 2010, all prior versions of MSP inherit the default behavior of **Automatic Scheduling** when new tasks are created. The tasks that are created by the Vision Export Plan to MSP feature also need to be created in **Automatic Scheduling** mode.

Enable “Automatic Scheduling” Mode in MSP

When first installed on a the client machine, MSP 2010 defaults to **Manual Scheduling** mode. In order for the Vision Export Plan to MSP feature to work, you need to enable the **Automatic Scheduling** mode.

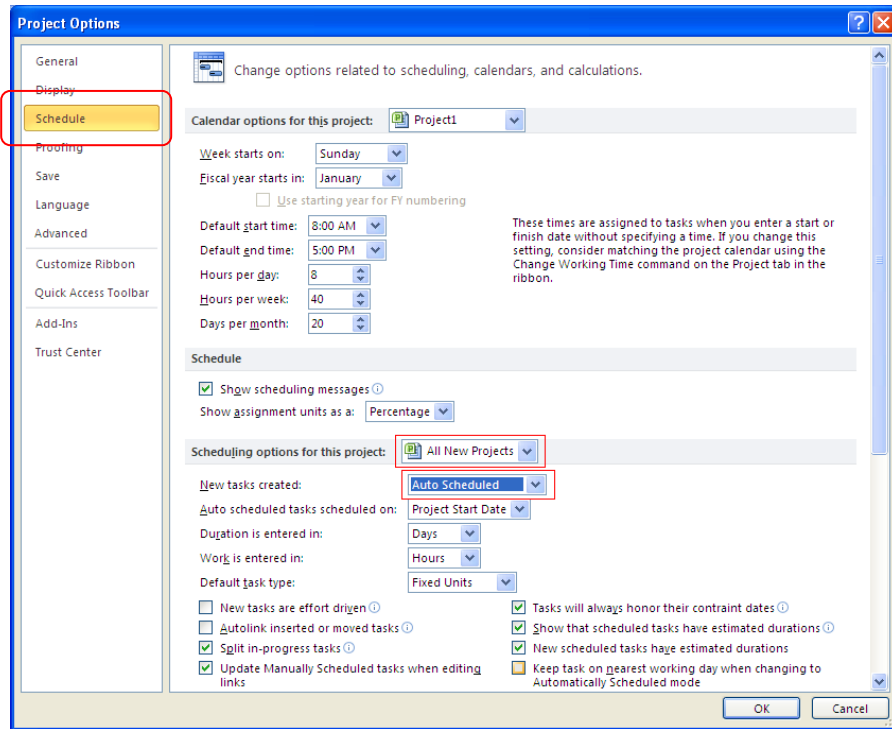
To enable Automatic Scheduling in MSP 2010, complete the following steps:

1. Launch MSP 2010.
2. Click **File » Options**.



The Project Options dialog box displays.

3. In the left pane of the Project Options dialog box, click **Schedule**.



4. Set the following options:
 - **Scheduling options for this project** — Select **All New Projects** from the drop-down list.
 - **New tasks created** — Select **Auto Scheduled** from the drop-down list.
5. Click **OK** to save your changes and close the dialog box.
6. Exit MSP.



You do not need to save the temporary project that was opened.

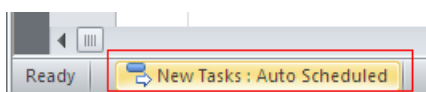
7. After exiting MSP, the Scheduling options are set for all subsequent use of MSP.


When a Plan is exported to MSP, the newly created project will be set to **Automatic Scheduling** mode.



It is very important to make sure that MSP is in **Automatic Scheduling** mode before exporting a Plan to MSP. MSP should be left in **Automatic Scheduling** mode as the default state.

While using MSP, you can toggle from automatic to manual mode for individual tasks or for the entire project by either using the Project Options dialog box settings or by clicking the following button located at the lower-left corner of the MSP window.



A blue geometric graphic consisting of several overlapping triangles and polygons, located in the top-left corner of the page.

Deltek is the leading global provider of enterprise software and information solutions for professional services firms, government contractors, and government agencies. For decades, we have delivered actionable insight that empowers our customers to unlock their business potential. Over 14,000 organizations and 1.8 million users in approximately 80 countries around the world rely on Deltek to research and identify opportunities, win new business, optimize resource, streamline operations, and deliver more profitable projects. Deltek – Know more. Do more.®

deltek.com