




**Deltek**

# **Deltek Costpoint®**

Cloud TIP (QA and/or SFE) Integration  
Setup Guide

**December 27, 2022**



---

While Deltek has attempted to verify that the information in this document is accurate and complete, some typographical or technical errors may exist. The recipient of this document is solely responsible for all decisions relating to or use of the information provided herein.

The information contained in this publication is effective as of the publication date below and is subject to change without notice.

This publication contains proprietary information that is protected by copyright. All rights are reserved. No part of this document may be reproduced or transmitted in any form or by any means, electronic or mechanical, or translated into another language, without the prior written consent of Deltek, Inc.

This edition published December 2022.

© Deltek, Inc.

Deltek's software is also protected by copyright law and constitutes valuable confidential and proprietary information of Deltek, Inc. and its licensors. The Deltek software, and all related documentation, is provided for use only in accordance with the terms of the license agreement. Unauthorized reproduction or distribution of the program or any portion thereof could result in severe civil or criminal penalties.

All trademarks are the property of their respective owners.



---

# Contents

Overview .....	1
Step 1: Submit Deltek Costpoint Enterprise Cloud Service Requests.....	2
TIP (QA and/or SFE) Integration Service Requests.....	2
ODBC Read Only Access Service Request.....	4
Step 2: Create Private/Public Keypair for Web Services Authentication .....	7
Step 3: Create the Costpoint User for Application Access via Web Services .....	8
Step 4: Configure the TIP (QA and/or SFE) Interface Profile .....	11
Add Interface Profile .....	11
Deltek Web Services Configuration.....	13

## Overview

**Note:** The TIP (QA and/or SFE) integration is available only for Costpoint Enterprise GCC customers. If you do not have the Enterprise Add-on, contact your Deltek account manager.

TIP (QA and/or SFE) reads data from Costpoint GovCon Cloud systems via a Progress® Hybrid Data Pipeline read-only connection to the Costpoint database transaction schema, and TIP (QA and/or SFE) updates data in Costpoint systems via Costpoint Web Services.

The TIP (QA and/or SFE) integration requires additional extensions (database objects) and web services definitions in the Costpoint system. Starting with Costpoint 8.1.13, the latest versions of the TIP (QA and/or SFE) integration extensions and web services packages are in the Costpoint Maintenance Releases and extracted to the cupdates folder under extPMFG\TIPQA and wsPFMG\TIPQA.

There are four steps to implement the TIP (QA and/or SFE) integration with Costpoint GovCon Enterprise Cloud systems:

- Step 1: Submit Deltek Costpoint Enterprise Cloud Service Requests
- Step 2: Create Private/Public Keypair for Web Services Authentication
- Step 3: Create the Costpoint User for Application Access via Web Services
- Step 4: Configure the TIP (QA and/or SFE) Interface Profile

**Attention:** Contact Deltek Customer Care or your account team to obtain consulting assistance.

# Step 1: Submit Deltek Costpoint Enterprise Cloud Service Requests

See your cloud offering help pages for information about submitting service requests. Please contact your Customer Success Manager if you need assistance with these requests.

- [Costpoint Enterprise GCC Moderate SaaS Administrator Service Requests - KB 102974](#)
- [Costpoint Enterprise GCC Standard SaaS Administrator Service Requests - KB 88571](#)

You must submit a TIP (QA and/or SFE) Integration service request and an ODBC Read Only Access Service Request.

## TIP (QA and/or SFE) Integration Service Requests

Submit the **Initial TIP Setup** integration request to:

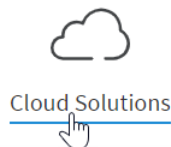
- Deploy the extensions and web services to one or more Costpoint systems for the first time.

Submit the **TIP Integration Update** request to:

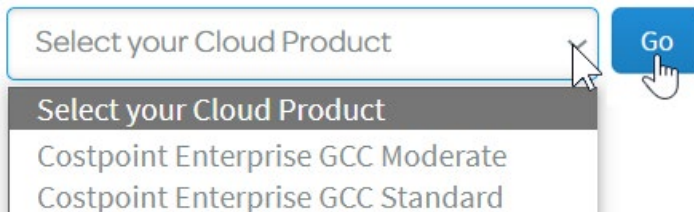
- Deploy a new version of the extensions and web services to one or more Costpoint systems.

Submit the **Initial TIP Setup** service request:

1. Log into the [Deltek Support Center](#) and navigate to [Cloud Solutions](#).



2. Select your Cloud Product, and click **Go**.



3. From the **SERVICE REQUESTS** list, select **Setup Integration with Costpoint**.



4. Download and unzip the Costpoint Integration Template archive.

- **Costpoint Enterprise GCC Moderate**  
[GCCM Costpoint Integration Template](#) - EnterpriseIntegrationSheets.zip
- **Costpoint Enterprise GCC Standard**  
[Costpoint Integration Configuration Template](#) - EssentialsIntegrationSheets.zip

## Step 1: Submit Deltek Costpoint Enterprise Cloud Service Requests

5. Complete the TIP (QA and/or SFE) integration spreadsheet (TIP.xlsx).  
Detailed instructions for completing the spreadsheet are included in the spreadsheet itself.
6. Save and rename the completed spreadsheet to include your Company ID and the date submitted.
7. Select **Initial TIP Setup**, upload the completed TIP\_CompanyID\_Date.xlsx spreadsheet, and **Submit** the service request.

### ▪ Costpoint Enterprise GCC Moderate

#### ● Setup Integration with Costpoint

Select the integration you would like to establish.

Initial TIP Setup ▼

Complete and attach the [GCCM Costpoint Integration Template](#). You will need to encrypt the file using PGP then submit the file using Deltek SFTP.

**You will need to hit submit to initiate this integration.**



- [Encrypting a File to Send to Deltek](#)
- [Uploading Files to the Deltek SFTP Service \(GoAnywhere\)](#)

### ▪ Costpoint Enterprise GCC Standard

#### ● Setup Integration with Costpoint

Select the integration you would like to establish.

Initial TIP Setup ▼

Complete and attach the [Costpoint Integration Configuration Template](#)  
**Costpoint Enterprise GCC Standard Integration Template:**

Choose File TIP\_67725\_20221031.xlsx

### Submit a **TIP Integration Update** service request:

1. Log into the [Deltek Support Center](#) and navigate to [Cloud Solutions](#).



Cloud Solutions



2. Select your Cloud Product, click **Go**.

Step 1: Submit Deltek Costpoint Enterprise Cloud Service Requests



3. From the **SERVICE REQUESTS** list, select **TIP Integration Update**.

☒ **TIP Integration Update**

4. Download and complete the **TIP Integration Update form** (TIPUpdateConfiguration.xlsx). Detailed instructions for completing the spreadsheet are included in the spreadsheet itself.
5. Save and rename the completed spreadsheet to include your Company ID and the date submitted.
6. Upload the spreadsheet (GCCM).
  - [Encrypting a File to Send to Deltek](#)
  - [Uploading Files to the Deltek SFTP Service \(GoAnywhere\)](#)
7. Select **Costpoint System**, **Select a Date**, and **Submit**.

☒ **TIP Integration Update**

Enter the Costpoint System Name to Update.

Costpoint System:

Select a Date:

Submit the [TIP Integration Update form](#) to specify the TIEP version required.

## ODBC Read Only Access Service Request

**Note:** You must have an ODBC license before submitting this request. Please check with your account team.

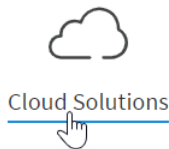
Submit one initial **Add User Account** request for all existing Costpoint systems. Subsequent **Add User Account** requests will be required for new Costpoint systems.

For GCCM customers, set a recurring reminder and submit a **Change Account Password** request every ~55 days (expires every 60).

**To submit an ODBC Read Only Access service request:**

1. Log into the [Deltek Support Center](#) and navigate to [Cloud Solutions](#).

## Step 1: Submit Deltek Costpoint Enterprise Cloud Service Requests



2. Select your Cloud Product, and click **Go**.

3. From the SERVICE REQUESTS list, select **ODBC Read Only Access**.

- For Costpoint Enterprise GCC Moderate:

### ☒ ODBC Read Only Access

Attach the [Costpoint GCCM ODBC User Access Form](#) to identify which users should be provided ODBC Read Only Access and/or which users' access should be removed. Encrypt spreadsheet using PGP then submit using the Deltek SFTP service.

**You must also click the Submit button below to initiate the service request.**

**Submit**

- For Costpoint Enterprise GCC Standard:

### ☒ ODBC Read Only Access

Attach the [Costpoint Enterprise GCC Standard ODBC Read Only Access](#) to identify which users should be provided ODBC Read Only Access and/or which users' access should be removed.

User Access Form:

ODBC\_67725\_20221031.xlsx

**Before submitting, please check with your SaaS Admin if the ODBC license has been provisioned on your account.**

**Submit**

4. Download the ODBC Read Only Access Form for your Costpoint SaaS offering.
5. Complete the ODBC spreadsheet (DeltekCostpointCloudODBCReadOnlyAccessUserForm.xlsx). Detailed instructions for completing the spreadsheet are included in the spreadsheet itself.
6. Save and rename the completed spreadsheet to include your Company ID and the date submitted.
7. Upload the completed ODBC\_CompanyID\_Date.xlsx spreadsheet
  - Enterprise GCC Standard customers upload their spreadsheet directly in the service request widget. Upload the spreadsheet now and click Submit to open a new case for this request.



## Step 1: Submit Deltek Costpoint Enterprise Cloud Service Requests

---

- Enterprise GCC Moderate customers must encrypt and upload the spreadsheet using Deltek SFTP. Click Submit now to create a new case for this request, and then use the following instructions to perform the encryption and upload the file:
  - [Encrypting a File to Send to Deltek](#)
  - [Uploading Files to the Deltek SFTP Service \(GoAnywhere\)](#)

## Step 2: Create Private/Public Keypair for Web Services Authentication

JSON Web Token (JWT) is the preferred authentication method for accessing Costpoint Web Services. This is a requirement when Costpoint is in Deltek's GovCon Cloud Moderate environment.

In the following procedure, use the exact commands given, only replacing <text>. The -alias <text> is treated as case sensitive. These commands require Java. The resulting tip-identity and tip-public files should be considered protected information.

### To create a Private/Public keypair:

1. Generate the private/public keypair (identity).

```
keytool -genkeypair -alias TIP -keyalg RSA -validity 365 -dname "CN=TIP,OU=CP,O=Deltek,L=Herndon,ST=VA,C=US" -keystore tip-identity.jks -keypass password -storepass password
```

2. Export the public key for Costpoint Web Service User Configuration.

```
keytool -export -alias TIP -keystore tip-identity.jks -rfc -file tip-public.pem -keypass password -storepass password
```

3. Convert JKS to PKCS12 and extract private key for TIP (QA and/or SFE) Configuration.

```
keytool -importkeystore -srckeystore tip-identity.jks -srcstorepass password -srckeypass password -srcalias TIP -destalias TIP -destkeystore tip-identity.p12 -deststoretype PKCS12 -deststorepass password
```

```
openssl pkcs12 -in tip-identity.p12 -nodes -nocerts -out tip-private.pem password pass:password
```

4. Save and protect the tip-private and tip-public files.

The private key will be entered into TIP (QA and/or SFE), and the public key will be entered into Costpoint.

## Step 3: Create the Costpoint User for Application Access via Web Services

Use the following procedure to create the Costpoint User, set Company Access and Application Rights, Allow Application Access via Web Services, and upload public key.

**To create the Costpoint User for Application Access via Web Services:**

1. Log into Costpoint.
2. On the main menu screen, click **Administration » Security » System Security » Manage Users**.
3. On the Manage Users screen Information tab, enter values for the **User ID** (for example, **TIPCP**), **User Name**, **Email**, and **Default Company**.

4. On the Authentication tab, set the **Authentication Method**.

**Note:** The Database authentication method is not available when Costpoint is in Deltek's GovCon Cloud Moderate environment.

5. In Company Access, click **New** and enter the **Company ID** and **Default Taxable Entity ID**.

Company Access									
Company ID *	Default Taxable Entity ID	Org Security Group ID	Suppress Labor	Suppress SSN	Suppress Cost	Suppress Price	Suppress AP Tax ID	Company Name	
1	1	ALL	<input type="checkbox"/>	<input checked="" type="checkbox"/>	<input type="checkbox"/>	<input type="checkbox"/>	<input type="checkbox"/>	Applied Technologies Inc	

Step 3: Create the Costpoint User for Application Access via Web Services

6. In Application Rights, add full rights for the following Modules.

Module	Name	Rights	Company	Purpose
AP	Accounts Payable	FULL	*	Enables the VendorApproval object to be able to post supplier status updates.
PC	Production Control	FULL	*	Enables the Manufacturing and Operation objects to be able to send operation and inspection level completions to specific manufacturing orders.
PO	Purchasing	FULL	*	Enables the ReceiverOut object to properly update receipts and purchase orders for those receipts.
PD	Product Definition	FULL	*	Enables the ASLOut object to add or update suppliers to items.
RC	Receiving	FULL	*	Enables the ReceiverOut object to properly update receipts and purchase orders for those receipts.

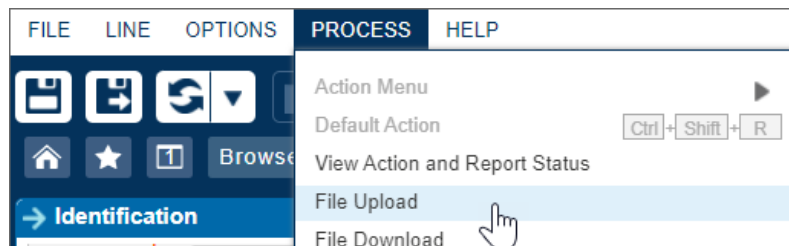
\* - The Company ID is required to match the one used for the Inbound configuration with this Business Unit.

7. Click **Save & Continue** or press F6 on your keyboard.

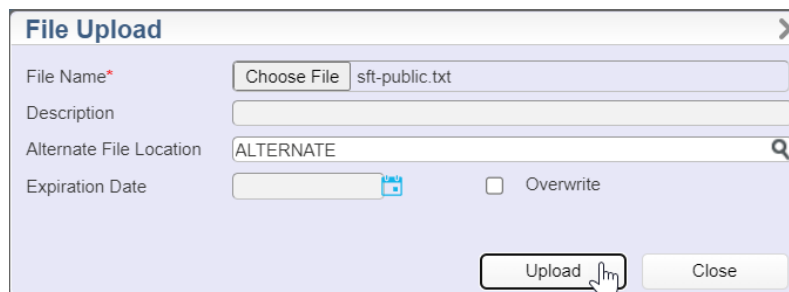


8. Rename **tip-public.pem** to **tip-public.txt**, and upload tip-public.txt to the ALTERNATE **Alternate File Location**:

- a. Click **PROCESS » File Upload**.



- b. On the File Upload dialog box, click **Choose File** and select the tip-public.txt file.  
c. Select an Alternate File Location.



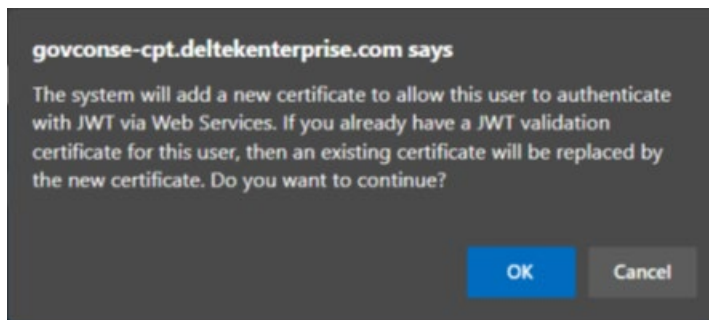
- d. Click **Upload**.

Step 3: Create the Costpoint User for Application Access via Web Services

- On the Web Services page, enter the **File Location** and **File Name** from the previous step, and click **Add Certificate**.

The screenshot shows the 'Identification' page with the 'Web Services' tab selected. Under 'Web Services Access Settings', both 'Allow Application Access via Web Services' and 'Authenticate with JWT' are checked. In the 'JWT Certificate' section, 'File Location' is set to 'ALTERNATE' and 'File Name' is 'sft-public.txt'. The 'Add Certificate' button is highlighted with a mouse cursor. At the bottom, there are links for 'Company Access', 'Assigned User Groups', 'Module Rights', and 'Application Rights'.

- Click **OK** when prompted.



- If the certificate is added successfully, the record is saved, and the certificate information displays:

This screenshot shows the same 'Identification' page, but now the 'File Location' and 'File Name' fields are empty. The 'Certificate' field displays the following information: 'Certificate={Common Name (CN): SFT. Issuer: CN=SFT, OU=Costpoint, O=Deltak, L=Herndon, ST=Virginia, C=US. Valid from 2022-02-02 to 2022-05-03}'. The 'Add Certificate' button is still visible.

## Step 4: Configure the TIP (QA and/or SFE) Interface Profile

When the TIP (QA and/or SFE) Integration Service Request and ODBC Read Only Access Service Request have been completed, Deltek will contact you and provide the information needed to complete the following steps.

**Attention:** Refer to the [TIP DELTEK Interface Configuration and Usage Guide](#) for detailed configuration information.

### Add Interface Profile

To add an interface profile:

1. Navigate to **Access Control » Business Unit**.
2. On the Add Interface Profile screen, enter the following:
  - **Connection URL:** Enter the JDBC URL provided by the Deltek Cloud Team for your systems.

**Note:** Refer to the following section for a list of URLs.

- **Schema Name:** Enter the schema name (for example, CPTRAN\_<12345>\_<CUSTOM>).
- **Password:** Enter your password.

Add Interface Profile

Profile Name	Deltek CP8	
Interface Type	DELTEK	Deltek WebService Config
Interface Version	V8.0	
Interface Timezone	America/New_York (-04:00)	
Database Type	MSSQL	
Connection Url	jdbc:sqlserver://10.0.0.240:1433;databaseName=DELTEKCP8;	
Schema Name	TIPWEB	
Password	.....	Test Connection

Save Cancel

## Connection URL Format and FQDNs

### URL Format

```
jdbc:datadirect:ddhybrid://<FQDN>:443;hybridDataPipelineDataSource=<CUSTOMER>;ValidateServerCertificate=False;User=<ODBC_USER>;
```

### FQDNs

#### Costpoint Enterprise GCC Moderate

Production Systems: cp-hdp01.**prd**.mydeltekgcc.com

Test/Dev Systems: cp-hdp01.**npr**.mydeltekgcc.com

#### Costpoint Enterprise GCC Standard

All Systems: hdp2-usea-cp.deltekenterprise.com

## Deltek Web Services Configuration

### To configure Deltek Web Services:

1. Click **Deltek WebService Config**.
2. On the Deltek Web Services Configuration screen, enter the following information.
  - **Deltek Web Service URL:** Enter one of the following URLs.  
For Costpoint GCC Moderate:
    - PROD: https://cp-<customer>-prod.prn.mydeltekgcc.com/cpweb/
    - TEST: https://cp-<customer>-test.npr.mydeltekgcc.com/cpweb/
    - DEV: https://cp-<customer>-dev.npr.mydeltekgcc.com/cpweb/
 For Costpoint GCC Standard:
    - PROD: https://<customer>-cp.deltekenterprise.com/cpweb/
    - TEST: https://<customer>-cpt.deltekenterprise.com/cpweb/
    - DEV: https://<customer>-cpd.deltekenterprise.com/cpweb/
  - **WebService Security Token Username:** Enter the security token username (for example, TIP CP)
  - **WebService Security Token Private Key:** Enter the security token private key (for example, tip-private.pem).
  - **Deltek System (Database):** Enter the system name (for example, <CUSTOMER>).

Deltek Web Services Configuration

Ok

Deltek Webservice URL	<input style="width: 95%;" type="text" value="http://10.0.0.240:7009/"/>	
WebService Security Token Username	<input style="width: 95%;" type="text" value="TIPQAINTTWJ"/>	
Authentication Mode	<div style="border: 1px solid #ccc; padding: 2px; display: flex; justify-content: space-between; align-items: center;"> <span>JWT Token</span> <span>▼</span> </div>	
WebService Security Token Private Key	<div style="border: 1px solid #ccc; padding: 5px; min-height: 100px;"> <div style="text-align: center; font-weight: bold; margin-bottom: 5px;">-----BEGIN PRIVATE KEY-----</div> <div style="font-family: monospace; font-size: 0.9em;"> MIJQQIBADANBgkqhkiG9w0BAQEFAASCCS  swggknAgEAAoICAQCWj10kM2SgK5Tn  TeyjwHXUjlayDgEdwfANDD8P3Bg2ZzxYr6V  MP/Q7zXl/CGglfYtqBTAKaEtdN1UF </div> </div> <div style="background-color: #007bff; color: white; padding: 5px; text-align: center; margin-top: 5px; border-radius: 4px;">Test Connection</div>	
Deltek System (Database)	<input style="width: 95%;" type="text" value="DELTEKCP"/>	(Case Sensitive - Should match host)
Default Personnel ID to be sent to Deltek for an Automated Receiver Disposition	<input style="width: 95%;" type="text" value="ALEXGEMP"/>	

Save
Cancel





---

## About Deltek

Better software means better projects. Deltek delivers software and information solutions that enable superior levels of project intelligence, management, and collaboration. Our industry-focused expertise makes your projects successful and helps you achieve performance that maximizes productivity and revenue. [www.deltek.com](http://www.deltek.com)