


# Deltek Touch for Maconomy®

Touch 3.2 Multitenancy Setup Guide

**May 2019**



---

While Deltek has attempted to verify that the information in this document is accurate and complete, some typographical or technical errors may exist. The recipient of this document is solely responsible for all decisions relating to or use of the information provided herein.

The information contained in this publication is effective as of the publication date below and is subject to change without notice.

This publication contains proprietary information that is protected by copyright. All rights are reserved. No part of this document may be reproduced or transmitted in any form or by any means, electronic or mechanical, or translated into another language, without the prior written consent of Deltek, Inc.

This edition published May 2019.

© Deltek, Inc.

Deltek's software is also protected by copyright law and constitutes valuable confidential and proprietary information of Deltek, Inc. and its licensors. The Deltek software, and all related documentation, is provided for use only in accordance with the terms of the license agreement. Unauthorized reproduction or distribution of the program or any portion thereof could result in severe civil or criminal penalties.

All trademarks are the property of their respective owners.

---

# Contents

Overview .....	1
Enable Multitenancy Setup .....	2
Set Up the Proxy Server.....	2
Add Rules to the “containers” REST API.....	3
Add Rules to the Filedrop API .....	5
Set Up the configuration.ini File .....	6
Core configuration.ini .....	6
Tenant configuration.ini.....	7
Creating File Name for the configuration.ini .....	9
Appendix A: Supported Deployment Scenario.....	10
Appendix B: If You Need Assistance .....	11
Customer Services .....	11
Deltek Support Center .....	11
Access Deltek Support Center .....	12
Additional Documentation.....	12

## Overview

This document provides instructions on how to set up multitenancy in Deltek Touch for Maconomy. This release, however, only supports Internet Information Services (IIS) for multitenancy.

**Note:** The official name of the application is *Deltek Touch for Maconomy*. This document only uses it at first mention. The succeeding instances of the application name display *Deltek Touch*. In addition, the application name in *Apple App Store* and *Google Play* displays *Deltek Touch for Maconomy*.

Before you install Deltek Touch, install the following prerequisite software:

Software Name	Suggested Installation Link
Microsoft IIS URL Rewrite 2.1	<a href="http://www.iis.net/downloads/microsoft/url-rewrite">http://www.iis.net/downloads/microsoft/url-rewrite</a>
Microsoft IIS Application Request Routing	<a href="http://www.iis.net/downloads/microsoft/application-request-routing">http://www.iis.net/downloads/microsoft/application-request-routing</a>

**Attention:** Make sure you understand the role of new parameters introduced in the `configuration.ini` file of Deltek Touch. For more information, see the `configuration.ini` of the Deltek Touch for Maconomy Technical Installation Guide.

## Enable Multitenancy Setup

This section describes the instructions in enabling multitenancy using the IIS manager. The major steps are as follows:

1. Install Deltek Touch for Maconomy.
2. Web services are all available and accessible by Deltek Touch.
3. Make sure that you have all the required connection details to the Web services (for example, database name of the REST, and IP Address of the REST API for containers and filedrop).
4. Set up the proxy server.
5. Set up the configuration.ini file.
6. Set up the core configuration.ini file.
7. Set up the tenant configuration.ini file.
8. Perform the file naming for the configuration.ini file.

## Set Up the Proxy Server

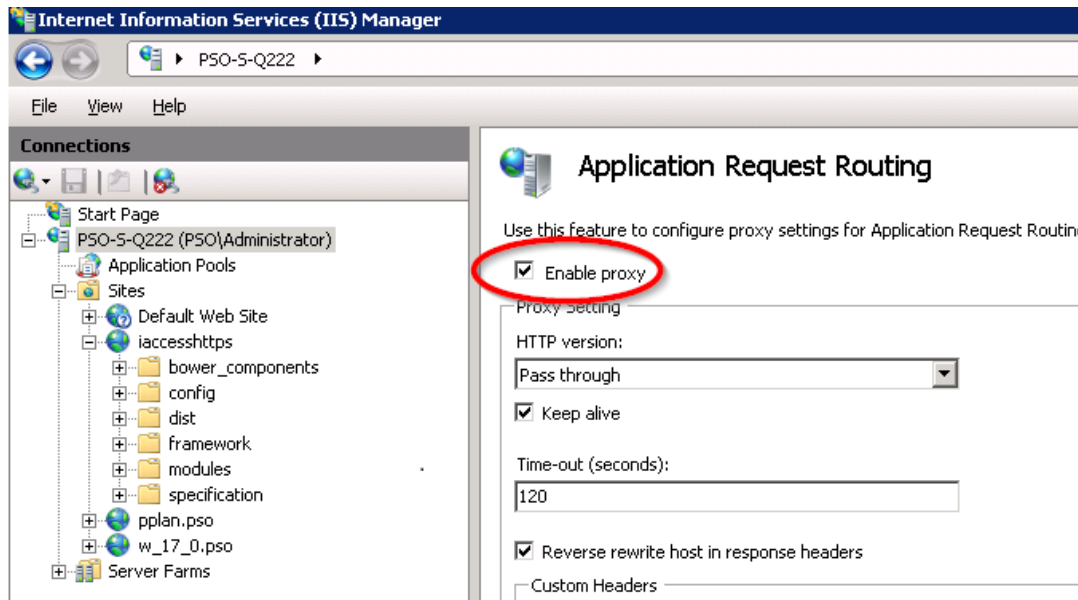
To set up the proxy server, complete the following steps:

Before you set up the proxy server in IIS, you need to install the **Microsoft IIS URL Rewrite 2.1** and install the **Application Request Routing (ARR)**.

**Attention:** For more information on Microsoft IIS URL Rewrite, see <http://www.iis.net/downloads/microsoft/url-rewrite>.

In IIS 8.0 and 8.5, you need to install the “Web Platform Installer” before you can install the ARR plugin. For more information on installing the ARR plugin, see <http://www.microsoft.com/en-us/download/details.aspx?id=39715>.

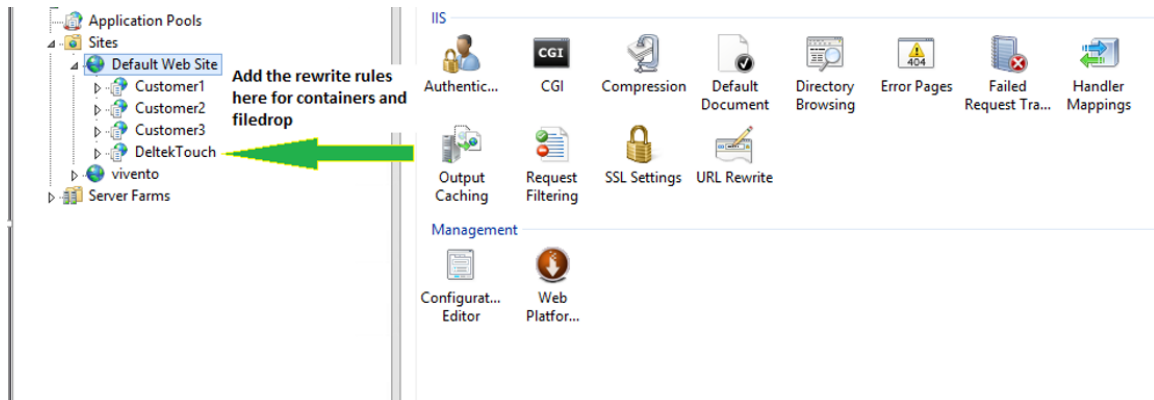
1. Restart IIS Manager.
2. In the Application Request Routing configuration window, click **Server Proxy Settings**.
3. Select **Enable proxy**.



To perform the proxy server setup, complete the following steps:

1. Add the rewrite rules for the proxy in the IIS manager. First click the website where you want to define the rewrite rules.

Deltek recommends that rules must be added to the local site (for example, DeltekTouch) not to the root site (for example, Default Web Site).



2. Click the **URL Rewrite** applet.
3. Add the rules for “containers” REST API for a specific client. For more information, see the Add Rules to “containers” REST API section.
4. Add the rules for “filedrop” REST API for a specific client. For more information, see the Add Rules to Filedrop API section.
5. Restart the IIS Manager.

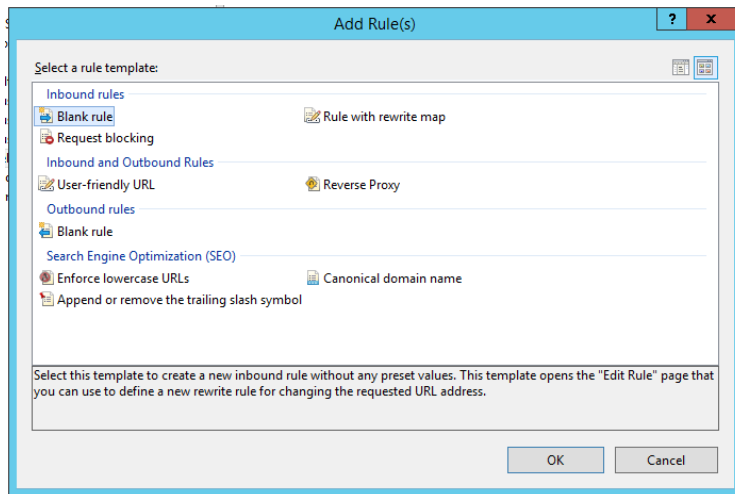
## Add Rules to the “containers” REST API

To add the rules to container API, complete the following steps:


1. Open the **URL Rewrite** applet.

## Enable Multitenancy Setup

2. In the Actions pane, click **Add Rule(s)**.
3. On the Add Rule(s) dialog box, select the **Blank Rule** option in the **Inbound rules** section.



4. Click **OK**.
5. On the Edit Inbound Rules window, enter or select the appropriate values:

 Edit Inbound Rule

**Match URL**

Requested URL:  Using:

Pattern:

☒ Ignore case

**Conditions**

**Server Variables**

**Action**

Action type:

**Action Properties**

Rewrite URL:

☒ Append query string

☐ Log rewritten URL

☐ Stop processing of subsequent rules

- **Name** – Set the rule name (for example, Customer1Containers).

- **Requested URL** – Select the **Matches the Pattern** option.
  - **Using** – Select the **Wildcards** option.
  - **Pattern** – Enter the pattern, **proxycode/containers/\***.
  - **Ignore case** – Select this option.
  - **Conditions** – *Do not change anything.*
  - **Server Variables** – Add the HTTP\_X\_FORWARDED\_PROTO with an **https** value if the Touch server is setup with **https**. Otherwise, use **http**. Checked the 'Replace the existing value.'
  - **Action**
    - **Action type** – Select the **Rewrite** option.
    - **Action Properties**
      - **Rewrite URL** – Enter the URL for the RESTful API, for example, <http://10.1.1.111:1111/containers/{R:1}>.
      - **Append query string** – Select this option.
      - **Log rewritten URL** – Do not select this option.
    - **Stop processing of subsequent rules** – Do not select this option.
6. On the right pane, click **Apply**.

## Add Rules to the Filedrop API

To add the rules to the filedrop API, complete the following steps:

1. Open the **URL Rewrite** applet.
2. In the Actions pane, click **Add Rule(s)**.
3. On the Add Rule(s) dialog box, select the **Blank Rule** option in the **Inbound rules** section.
4. Click **OK**.
5. On the Edit Inbound Rules window, enter or select the appropriate values:
  - **Name** – Set the rule name (for example, Customer1Filedrop).
  - **Requested URL** – Select the **Matches the Pattern** option.
  - **Using** – Select the **Wildcards** option.
  - **Pattern** – Enter the pattern, **proxycode/filedrop/\***.
  - **Ignore case** – Select this option.
  - **Conditions** – *Do not change anything.*
  - **Server Variables** – Add the HTTP\_X\_FORWARDED\_PROTO with an **https** value if the Touch server is setup with **https**. Otherwise, use **http**. Checked the 'Replace the existing value.'
  - **Action**
    - **Action type** – Select the **Rewrite** option.
    - **Action Properties**



- **Rewrite URL** – Enter the URL for the RESTful API, for example, <http://10.1.1.111:1111/filedrop/{R:1}>.
  - **Append query string** – Select this option.
  - **Log rewritten URL** – Do not select this option.
  - **Stop processing of subsequent rules** – Do not select this option.
6. On the right pane, click **Apply**.

## Set Up the configuration.ini File

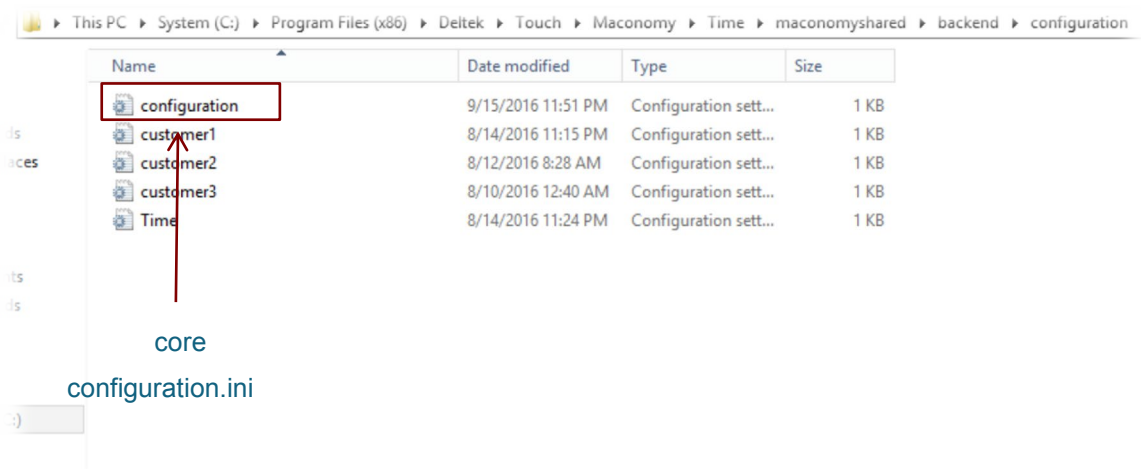
There are two types of configuration.ini file needed when setting up the multitenancy for Deltek Touch: one “core” configuration.ini and individual tenant’s configuration.ini (which resides in the configuration folder of the Touch Server).

### Core configuration.ini

The core configuration.ini file does not contain the connection details of the Web services users need. It only contains the information whether this is a multitenant environment. For more information, see the Appendix section of this document.

In the Touch client-side application, setting the value of the **Server URL** field and tapping **Connect** instructs Deltek Touch to connect to the Touch Server. When the Touch Server receives the request from Deltek Touch, it performs the following actions:

- Retrieves the configuration.ini file by calling certain methods in the “RemoteCall.php.”
- Checks the parameter “DYNAMICSCRIPT.” If it is set to true, multitenancy is enabled.
- If the parameter “DYNAMICSCRIPT” is true, the “RemoteCall.php” analyzes the value entered in the **Server URL** field whether the user is connecting via native application or the “URL” or connecting via browser. The tenant code extracted by the “RemoteCall.php” is dependent on the URL. For example, in the URL <http://clientsite.com/customer1>, the Touch Server looks for customer1.ini (which contains the connection details for the Web service) in the Touch Server.



## Sample Content of the Core configuration.ini File

```
. *****
;
; Maconomy Touch Configuration File
. *****
;

[SERVER_DATA]
DYNAMICSCRIPT="TRUE"
TOUCHSERVER="2.3.0.0"
HELPODOCURL="http://clientsite.com/deltektouchdownloads/docs/DeltekTouchforMaconomyUserGuide.pdf"

[REST_PROXY_DATA]
REST_HTTP_PROTOCOL=""
REST_DOMAIN_NAME=""
REST_HTTP_PORT=""
REST_PROXYPASS_CLIENT_CODE=""
REST_CONTAINER_NAME=""
REST_FILEDROP_NAME=""
REST_VERSION=""
REST_DATABASE=""
REST_LANGUAGE=""
REST_IIS_TOUCH_FOLDER_NAME=""
REST_AUTHENTICATION_TYPE=""

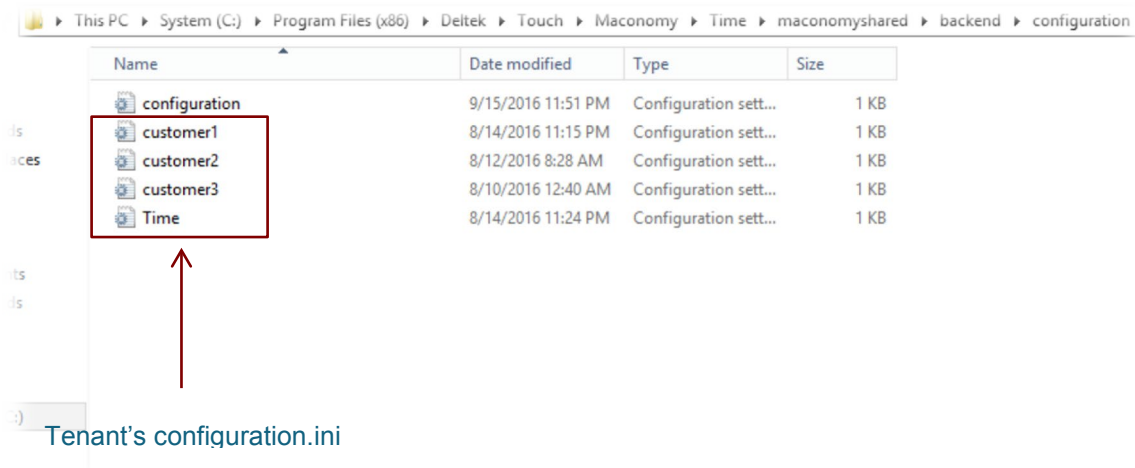
[REST_MODULE_SETUP]
USERESTFORTIME="false"
USERESTFOREXPENSE="false"
USERESTFORAPPROVALS="false"
```

## Tenant configuration.ini

After setting up the core configuration.ini file, create each specific tenants configuration.ini. The tenant configuration.ini contains the connection details about the Web service that Touch client-side application needs.

The tenant configuration.ini resides in the configuration folder of the Touch server along with the core configuration.ini.

## Enable Multitenancy Setup



### Sample Content of the Tenant configuration.ini File

```

; *****
;
; Maconomy Touch Configuration File
; *****
;

[SERVER_DATA]
URL="http://10.1.1.1:1111/cgi-
bin/Maconomy/MaconomyTouch.x1demo.en_US_CPA.exe/Standard/DeltekTouchWS.ms"
CHARSET='UTF-8'
DYNAMICSCRIPT='false'
DEBUGGERFL="false"
TOUCHSERVERVER="2.3.0.0"
HELPDOCURL =
'http://clientsite.com/deltektouchdownloads/docs/DeltekTouchforMaconomyUserGuide.pdf'
CLIENTURL='https://clientsite.com/224SSO'

[REST_PROXY_DATA]
REST_HTTP_PROTOCOL="https"
REST_DOMAIN_NAME="clientdomain.com "
REST_HTTP_PORT=""
REST_PROXYPASS_CLIENT_CODE="224SSO"
REST_CONTAINER_NAME="containers"
REST_FILEDROP_NAME="filedrop"
REST_VERSION="v1"
REST_DATABASE="x1db"

```

**REST\_LANGUAGE="en\_US\_CPA"**

**REST\_IIS\_TOUCH\_FOLDER\_NAME="MacTouchMulti"**

**REST\_AUTHENTICATION\_TYPE="BASICAUTH"**

[REST\_MODULE\_SETUP]

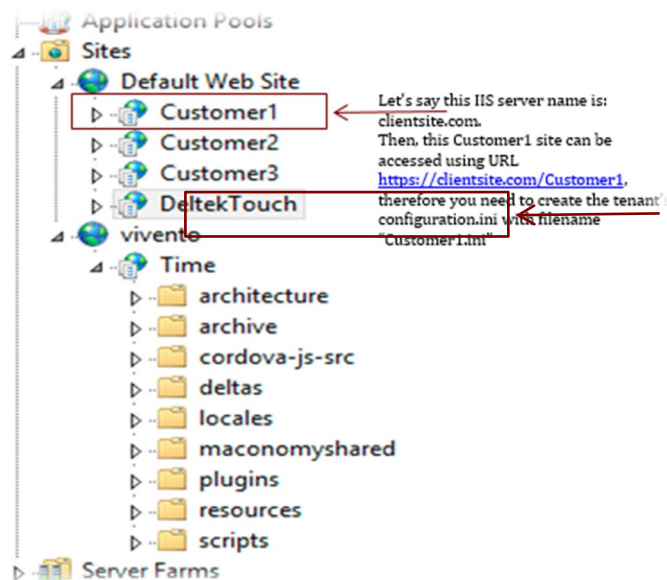
**USERESTFORTIME="true"**

**USERESTFOREXPENSE="true"**

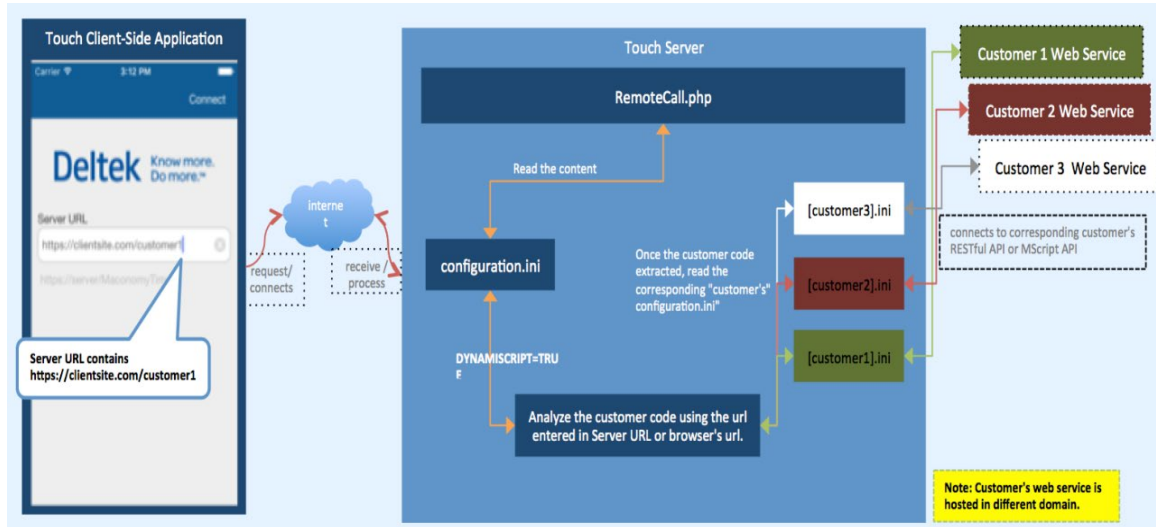
**USERESTFORAPPROVALS="false"**

## Creating File Name for the configuration.ini

- The file name for the core configuration.ini is always "configuration.ini" and resides in the configuration folder (for example, /time/maconomyshared/backend/configuration).
- The file name for the tenant configuration.ini is always dependent on the Web site name. For example, the "customer 1" Web site name is "Customer1" and the Web site setup for this customer1 can be accessed using the URL <http://samplesite.com/Customer1>. This means you need to create the tenant's configuration.ini with file name of "Customer1.ini"



## Appendix A: Supported Deployment Scenario



## Appendix B: If You Need Assistance

If you need assistance installing, implementing, or using Deltak Touch for Maconomy, Deltak makes a wealth of information and expertise readily available to you.

### Customer Services

For over 30 years, Deltak has maintained close relationships with client firms, helping with their problems, listening to their needs, and getting to know their individual business environments. A full range of customer services has grown out of this close contact, including the following:

- Extensive self-support options through the Deltak Support Center.
- Phone and email support from Customer Care analysts
- Technical services
- Consulting services
- Custom programming
- Classroom, on-site, and Web-based training

**Attention:** Find out more about these and other services from the Deltak Support Center.

### Deltak Support Center

The Deltak Support Center is a support Web site for Deltak customers who purchase an Ongoing Support Plan (OSP).

The following are some of the many options that the Deltak Support Center provides:

- Search for product documentation, such as release notes, install guides, technical information, online help topics, and white papers
- Ask questions, exchange ideas, and share knowledge with other Deltak customers through the Deltak Support Center Community
- Access Cloud-specific documents and forums
- Download the latest versions of your Deltak products
- Search Deltak's knowledge base
- Submit a support case and check on its progress
- Transfer requested files to a Customer Care analyst
- Subscribe to Deltak communications about your products and services
- Receive alerts of new Deltak releases and hot fixes
- Initiate a Chat to submit a question to a Customer Care analyst online

**Attention:** For more information regarding Deltak Support Center, refer to the online help available from the Web site.

## Access Deltek Support Center

To access the Deltek Support Center:

1. Go to <https://deltek.custhelp.com>.
2. Enter your Deltek Support Center **Username** and **Password**.
3. Click **Login**.

**Note:** If you forget your username or password, you can click the **Need Help?** button on the login screen for help.

## Additional Documentation

The following table lists the Deltek documentation available for this release. Except where noted, all the user guides and quick reference guides listed in this table are available for download from the Deltek Support Center.

Document Name	Description
Deltek Touch for Maconomy User Guide	This document contains detailed information and instructions on how to use various features of the application.
Deltek Touch for Maconomy Release Notes	This document contains a summary of the technical considerations, major features, and known issues of the application.
Deltek Touch for Maconomy Upgrade Guide	<i>This document is only intended for Technical Consultants.</i> It describes necessary steps to upgrade to the latest Touch system.
Deltek FPU Release Notes for Maconomy Touch	<i>These documents are only intended for Technical Consultants.</i>  The document names vary depending on the supported Maconomy version. Each document contains a summary of the pre-installation information, enhancements, and API changes to Touch for each supported Maconomy version. It is part of the Deltek Touch for Maconomy 1.4 product information suite and should only be distributed internally within the Maconomy organization and to partners.
Deltek Touch for Maconomy Layout Customization Guide	<i>This document is only intended for Technical Consultants.</i> It describes tasks necessary for the customization of layouts of the Deltek Touch for Maconomy application.
Deltek Touch for Maconomy MScript and REST Web Services Comparison Guide	This document describes the differences between MScript and Representational State Transfer

## Appendix B: If You Need Assistance

---

Document Name	Description
	(REST) Web services to help technical consultants prepare for implementing Deltek Touch for new users or migrate their current Touch installation to REST.





---

## About Deltek

Better software means better projects. Deltek is the leading global provider of enterprise software and information solutions for project-based businesses. More than 23,000 organizations and millions of users in over 80 countries around the world rely on Deltek for superior levels of project intelligence, management and collaboration. Our industry-focused expertise powers project success by helping firms achieve performance that maximizes productivity and revenue. [www.deltek.com](http://www.deltek.com)