




Deltek

# Deltek Costpoint® 8.1

DB Wizard Utility

February 15, 2024



---

While Deltek has attempted to verify that the information in this document is accurate and complete, some typographical or technical errors may exist. The recipient of this document is solely responsible for all decisions relating to or use of the information provided herein.

The information contained in this publication is effective as of the publication date below and is subject to change without notice.

This publication contains proprietary information that is protected by copyright. All rights are reserved. No part of this document may be reproduced or transmitted in any form or by any means, electronic or mechanical, or translated into another language, without the prior written consent of Deltek, Inc.

This edition published February 2024.

© Deltek, Inc.

Deltek's software is also protected by copyright law and constitutes valuable confidential and proprietary information of Deltek, Inc. and its licensors. The Deltek software, and all related documentation, is provided for use only in accordance with the terms of the license agreement. Unauthorized reproduction or distribution of the program or any portion thereof could result in severe civil or criminal penalties.

All trademarks are the property of their respective owners.

---

# Contents

Overview .....	1
Prepare to Use the Costpoint DB Wizard Utility.....	2
Navigation.....	2
Start the Utility.....	3
Launch the Utility.....	3
Select a System.....	4
Review Connection Data.....	4
Test the Connection .....	4
Apply Script Utility .....	5
Error File.....	7
Child/Parent Utility.....	8
Error Log.....	9
Deploy Hotfix Utility .....	10
Link View Utility .....	13
Error Messages .....	14
Apply License Utility .....	15
Error Log.....	16
Remove License Utility.....	17
Error Log.....	19
Rebuild User Menus Utility.....	20
Error Log.....	21
Deploy Extension Utility .....	22
Error Log.....	24
Required Deploy Extension Database Tables .....	24
Remove Extension Utility .....	25
Error Log.....	26
Verify All Extensibility .....	28
Error Log.....	29
Command Line API to deploy Web Services and Extensions .....	31

## Overview

The Costpoint DB Wizard Utility is a tool for Costpoint administrators. It allows administrators to apply configuration changes to the installed Costpoint software.

This guide walks the Administrator through the tasks that can be performed using the DB Wizard.

## Prepare to Use the Costpoint DB Wizard Utility

The Costpoint DB Wizard requires the following file:

- **CPWebDBWizard.cmd**: This is the command file for starting the Costpoint DB Wizard utility.

### Navigation

This tool has a typical wizard interface, in which you use several screens in a standard order.

- Click the **Previous** and **Next** buttons to navigate between the screens.
- Click the **Cancel** button to return to the main screen.
- Click the **Run** button to start the process.

# Start the Utility

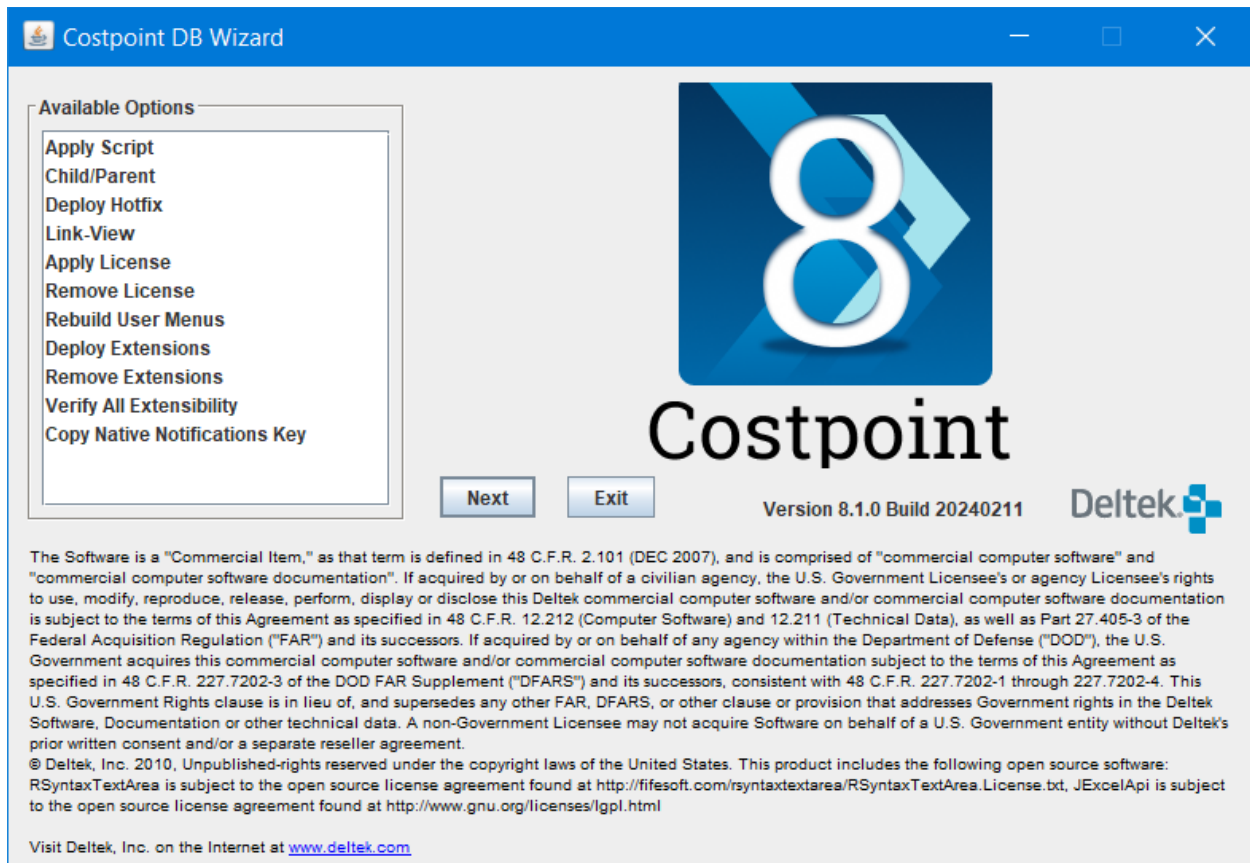
## Launch the Utility

To start the DB Wizard utility:

1. Take one of the following actions:
  - Run the **CPWebDBWizard.cmd** batch file. It should be located with all other Costpoint command files in the \deltek\costpoint\81\bin folder.
  - Click **Start » Deltek » Costpoint » 81 » Start Costpoint 8.1.0 DB Wizard**.

The DB Wizard main screen displays.

2. Make a selection from the **Available options** list, and click **Next**.



## Select a System

Any task you perform using this utility will start with the Select System screen. This screen allows you to select the particular system for the process you are about to perform and test your connection to the system.

The screenshot shows the 'Costpoint DBWizard: Apply License' window with the 'Select System' tab active. On the left, a sidebar lists three steps: '1. Select System', '2. Select License file', and '3. Run Apply License'. The main area displays a 'System' list with 'C80LVTEST3' selected. Below the list, the 'CP System' section shows fields for Host (HERDBT61\SQL2017), Port, Database Name (C80LVTEST3\_MET), User (CPSYSTEM), and URL (jdbc:weblogic:sqlserver://HERDBT61\SQL2017;DatabaseName=C80LVTEST3). A 'Test' button is located below the URL field. The 'CP Admin' section shows fields for Host (HERDBT61\SQL2017), Port, Database Name (C80LVTEST3\_ADM), and User (CPADMIN). At the bottom, there are 'Cancel' and 'Next' buttons.

The **Select System** field lets you choose from a list of available systems, and it is the only field on this screen that you can change.

When you select a system, the rest of the fields on the screen populate with data about the system. You cannot edit this data from within the DB Wizard. If you need to edit the data, use the Configuration Utility.

**Attention:** For information about the Configuration Utility, see the *Deltek Costpoint 8.0 Configuration Utility* guide.

## Review Connection Data

Before you perform any DB Wizard tasks, check that the correct connection information displays for each of the three Costpoint databases (Meta, Admin, and Data) that are part of the system.

## Test the Connection

Before you perform any DB Wizard tasks, click the **Test** button to test your connection to the each of the three databases (Meta, Admin, and Data) that are part of the system.

# Apply Script Utility

You use the Apply Script utility to apply database scripts to a particular system's schema.

## To run the Apply Script utility:

1. Start the Costpoint DB Wizard using the batch CPWebDBWizard.cmd file.
2. From the list of **Available options**, select **Apply Script**, and click **Next**.
3. Select the system and schema to use, and click **Next**.

The Script Parameters page displays.

The screenshot shows the 'Costpoint DBWizard: Run Script' dialog box with the 'Script Parameters' tab selected. The left sidebar shows a navigation pane with four steps: 1. Select Schema, 2. Script Parameters (current), 3. Summary, and 4. Run Script. The main area is divided into three sections: 'Choose File/Folder', 'Schema replace mode', and 'Execution Settings'. In 'Choose File/Folder', 'Selection Mode' has 'Single Script' selected. 'Script file' and 'Log file' fields are present, with the log file path being 'C:\deltek\costpoint\80\logs\applyScript\_2020\_08\_18\_12\_15.log'. In 'Schema replace mode', 'Off' is selected under 'Schema replace mode'. There are fields for 'Schema to replace' and 'New schema'. In 'Execution Settings', 'Stop on error' is selected. There is a checkbox for 'Restart after line number' with an empty text field next to it. At the bottom are 'Cancel', 'Previous', and 'Next' buttons.

4. In the **Choose File/Folder** section, complete the following:
  - **Selection Mode:** Select either **Single script** or **Folder**.
  - **Script file:** Enter, or click the browse button to select, the path to the script file or folder where the script is located.
  - **Log file:** If necessary, change the log filename and/or path.
5. In the **Schema replace mode** section, complete the following:
  - **Off:** Select this option to turn off the schema replace mode. This is the default mode.
  - **On:** Select this option to turn on the schema replace mode, and enter the following information:
    - **Schema to replace:** Enter the schema name to replace in the script.
    - **New schema:** Enter the new schema name that will replace the name entered in the field above.
  - **Remove:** Select this option to ignore any schema references and apply the script to the default database schema.



6. In the **Execution Settings** section, select how the utility handles errors when they occur:
  - **Stop on error:** Select this option to stop the process.
  - **Ignore errors:** Select this option to ignore errors and continue running the process until it reaches the end of the script.
  - **Restart after line number:** Select this check box and enter the line number from which to restart the script.

**Note:** This check box is available only in **Single script** selection mode.

7. Click **Next**.

The Summary page displays.

Parameter	Value
DB Platform:	SQLSERVER
DB Server:	HQ1DBDEV2
DB Instance:	C613RQM
DB Port:	1433
Script File:	c:\temp\testaaaaa.sql
Log File:	C:\deltek\costpoint\61\log\stapplyScript.log
Schema Mode:	Remove
Exec Settings:	Stop on error.

**Log Information**

Buttons: Cancel, Previous, Run

8. Verify that the system, script, logs, and modes information is correct, and click **Run** to start the process.

## Error File

If the process fails for any reason, an error log similar to the following displays:

```

applyScript.log - WordPad
File Edit View Insert Format Help

Applying db script testaaaa.sql ...
Deltek Global Support
North America:
1.877.HLP PROJ (1.877.457.7765)
United Kingdom:
0808 234 4753
All Other Countries: (call charges will apply):
+44 20 7518 5010 (UK)
+1 877 457 7765 (USA)
+61 (8) 8150 5500 (AU)
Have your support number ready and be prepared to email this
file to support:
C:\deltek\costpoint\61\logs\applyScript.log

SCRIPT_NAME  LINE_NO  ERR_TYPE  ERR_TEXT  ERR_DESC
*****
testaaaa.sql  2        SQL ERROR  com.deltek.enterprise.tools.  com.deltek.enterprise.tools.
                        dbwizard.engine.sqlparser.  dbwizard.engine.sqlparser.
                        ParseException: Encountered "/"  ParseException: Encountered "/"
                        " at line 3, column 1. Was  " at line 3, column 1. Was
                        expecting one of: <ORAHINT> ..  expecting one of: <ORAHINT> ..
                        . "(" ... ")" ... "INSERT" ...  . "(" ... ")" ... "INSERT" ...
                        "COMMIT" ... "CREATE" ...  "COMMIT" ... "CREATE" ...
                        "VALUES" ... "S  "VALUES" ... "S
  
```

# Child/Parent Utility

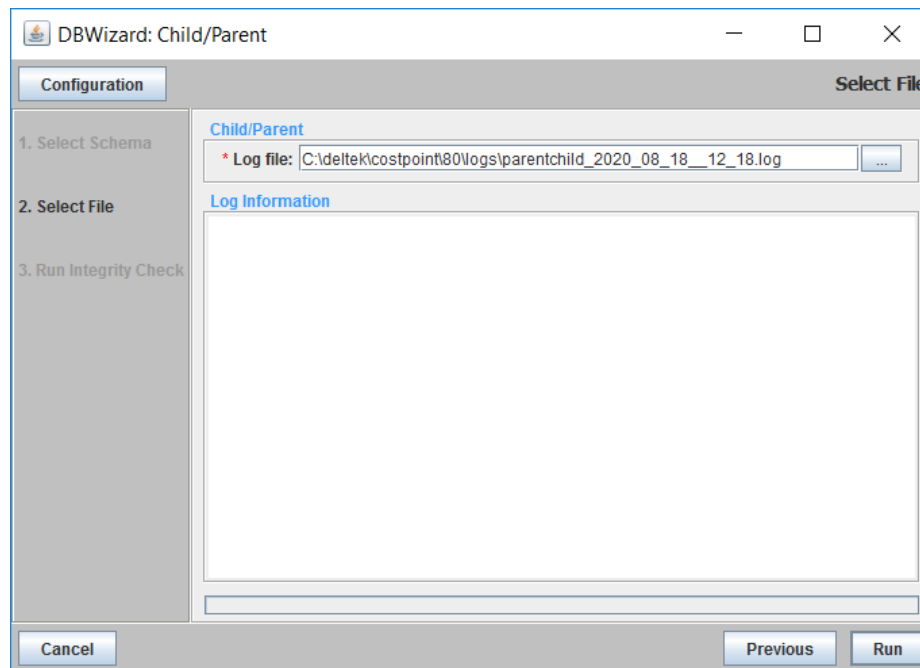
The Child/Parent utility reads each row in the Child table and checks the child/parent relationships. The utility then reports if there are orphaned rows in the Child table.

**Note:** This utility is helpful because, if there are child orphans, the foreign keys will fail to apply, causing problems in your system.

## To run the Child/Parent utility:

1. Start the Costpoint DB Wizard using the batch CPWebDBWizard.cmd file.
2. From the list of **Available options**, select **Child/Parent**, and click **Next**.
3. Select the system and schema to use, and click **Next**.

The Select File page displays.



4. In the **Child/Parent** section, change the **Log file** filename and/or path, if necessary.
5. Click **Run** to run the integrity check.

You can monitor the progress of the process in the **Log Information** field.

## Error Log

If the process fails for any reason or errors are encountered, an error log similar to the following displays:

```

grants.log - WordPad
File Edit View Insert Format Help
1 2 3 4 5 6 7
CHECKING F00001 EC_COUNTRY (C.COUNTRY_CD) PARENT COUNTRY
CHECKING F00002 H_SERV_AWARD (C.AWARD_CD, C.AWARD_START_DT) PARENT H_SERV_AWARD_HDR
CHECKING F00020 ACCT (C.S_ACCT_TYPE_CD) PARENT S_ACCT_TYPE
CHECKING F00021 ASSET_OTHER_INFO (C.ASSET_ID, C.ITEM_NO, C.COMPANY_ID) PARENT ASSET
CHECKING F00030 ACCTING_PD (C.FY_CD) PARENT FY
CHECKING F00040 ACCT_ENTRY_RULES (C.S_ACCT_ENTR_SCR_CD) PARENT S_ACCT_ENTRY_SCR
CHECKING F00050 ACCT_ENTRY_RULES (C.ACCT_ENTR_GRP_CD, C.COMPANY_ID) PARENT ACCT_ENTR_GRP
CHECKING F00060 ACCT_GRP_SETUP (C.ACCT_GRP_CD, C.COMPANY_ID) PARENT ACCT_GRP_CD
CHECKING F00070 ACCT_GRP_SETUP (C.S_ACCT_FUNC_DC) PARENT S_ACCT_FUNC
CHECKING F00080 ACCT_GRP_SETUP (C.ACCT_ID) PARENT ACCT
CHECKING F00090 ACCT_PD_TRNSL (C.ALT_FY_CD, C.ALT_PD_NO, C.ALT_FY_TYPE_DC) PARENT ALT_FY
CHECKING F00100 ACCT_PD_TRNSL (C.FY_CD, C.PD_NO, C.SUB_PD_NO) PARENT SUB_PD
CHECKING F00120 ALT_FY (C.ALT_FY_TYPE_DC) PARENT ALT_FY_TYPE_DC
CHECKING F00150 ALLOC_BASIS_JNL (C.FY_CD, C.PD_NO, C.S_JNL_CD, C.POST_SEQ_NO) PARENT POSTING
CHECKING F00160 ALLOC_BASIS_JNL (C.PROJ_ID) PARENT PROJ
CHECKING F00170 ALLOC_BASIS_JNL (C.FY_CD, C.PD_NO, C.SUB_PD_NO) PARENT SUB_PD
CHECKING F00190 ALLOC_BASIS_JNL (C.REF1_ID, C.COMPANY_ID) PARENT REF_STRUC
CHECKING F00200 ALLOC_BASIS_JNL (C.REF2_ID, C.COMPANY_ID) PARENT REF_STRUC
CHECKING F00240 ALT_PART (C.PART_KEY) PARENT PART
CHECKING F00250 ALT_PART (C.MANUF_ID) PARENT MANUF
CHECKING F00260 ALT_PART (C.VEND_ID, C.COMPANY_ID) PARENT VEND
CHECKING F00270 ALT_PART (C.PART_PREF_TYPE) PARENT PART_PREF_TYPE
CHECKING F00350 BRNCH_ADDR (C.BRNCH_LOC_ID) PARENT BRNCH_LOC
CHECKING F00370 BRNCH_ADDR (C.COUNTRY_CD, C.MAIL_STATE_DC) PARENT MAIL_STATE
CHECKING F00390 BRNCH_ADDR (C.SHIP_ID) PARENT SHIP_ID
CHECKING F00410 BRNCH_ADDR_CONTACT (C.BRNCH_LOC_ID, C.ADDR_DC) PARENT BRNCH_ADDR
CHECKING F00440 BUYER (C.EMPL_ID) PARENT EMPL
CHECKING F00450 BUYER_ORG_ACCT (C.BUYER_ID) PARENT BUYER
CHECKING F00460 BUYER_ORG_ACCT (C.ORG_ID, C.ACCT_ID) PARENT ORG_ACCT
CHECKING F00470 BUYER_PROJ (C.BUYER_ID) PARENT BUYER
CHECKING F00480 BUYER_PROJ (C.PROJ_ID) PARENT PROJ
For Help, press F1 NUM

```

# Deploy Hotfix Utility

You use the Deploy Hotfix Utility to deploy individual application hotfixes, DB patches, and common code libraries to your product installation. Deltek highly recommends that you perform the deployment of hotfixes only during maintenance outages of the product when ALL WebLogic nodes are down.

**Note:** This utility should not be used to deploy MRs as MRs are self-installed exe files.

## To run the Deploy Hotfix Utility:

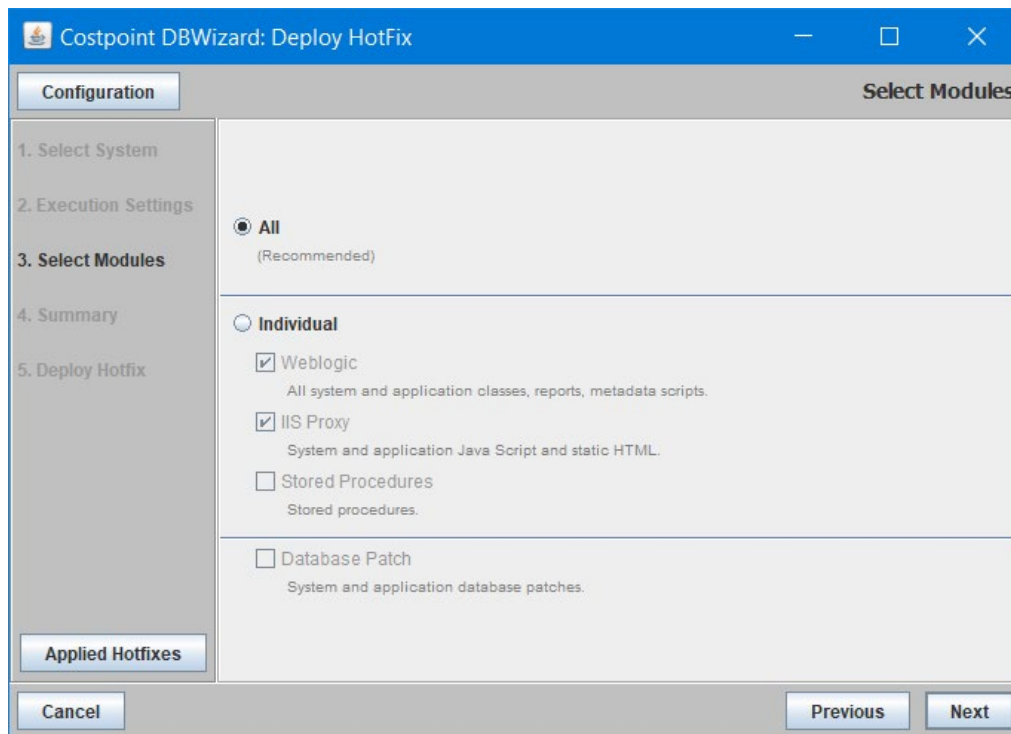
1. Start the Costpoint DB Wizard using the batch CPWebDBWizard.cmd file.
2. From the list of **Available options**, select **Deploy Hotfix**, and click **Next**.
3. Select the system to use or select **Apply To All**, and click **Next**.

**Note:** Deltek highly recommends that you deploy hotfixes to all systems in the current product deployment. Deploying a hotfix to just one of several systems may leave other systems in an incomplete state when newer Java or JS classes are deployed, but not latest metadata or latest DB Stored procedures.

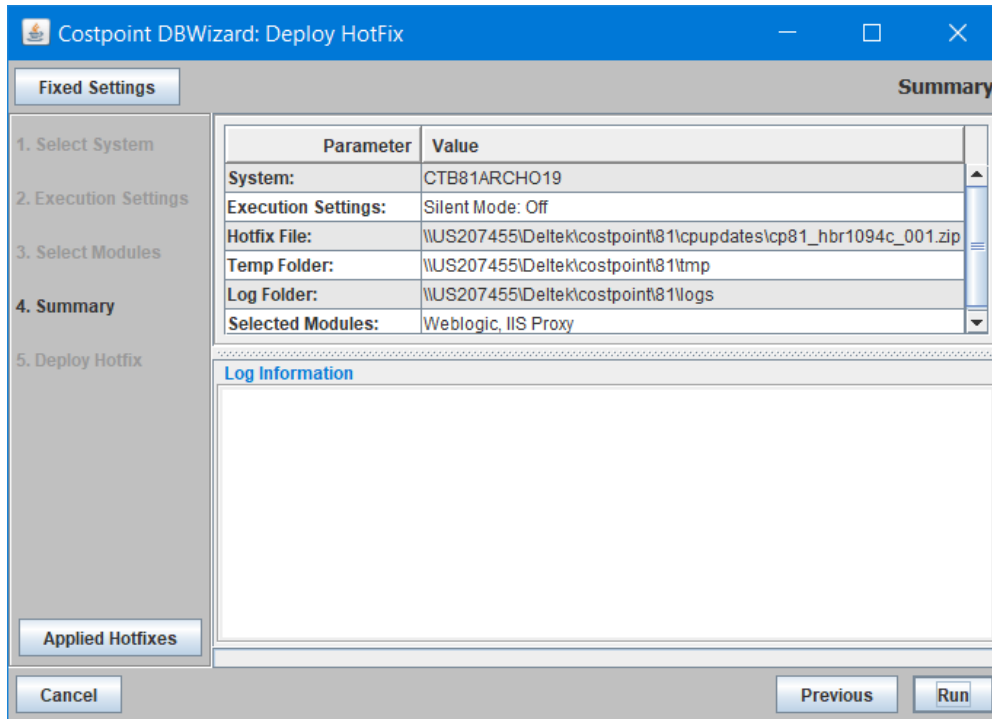
4. On Execution Settings page, take the following actions, and click **Next**:
  - **Single/Multiple:** Select **Single** if you want to deploy a single hotfix or select **Multiple** if you want to deploy a folder of hotfixes.
  - **Move Applied Files To:** Select this checkbox if you want to move the applied hotfixes to a specified location.
  - **Silent Mode:** Select this check box if you want to run the utility in the Silent Mode.

5. On the Select Modules page, select appropriate options for what you want to deploy:
  - **All:** Select this option to deploy all of the options.

- **Individual:** Select this option and then select the checkbox for parts of the hotfix you want to deploy:
  - **Weblogic**
  - **IIS Proxy**
  - **Store Procedures**
  - **Database Patch**



6. Click **Next**.
7. On the Summary page, review your selections screen, and click **Run** to execute the process of deploying selected Hotfixes.



8. After the process is complete, you are presented with the overall message about the deployment process and if any warnings or errors were encountered.

You should review generated deployment log file(s) under the main product log folder: deltek\costpoint\81\logs\. This folder contains the following log files:

- **hotfixlog\_summary\_XXXX.log:** This log file contains the summary details of the process
- **hotfixlog\_SystemName\_XXXX.log:** Each system where the hotfix(es) were deployed has its own separate log file.

Deltek highly recommends that you review all the log files to make sure there were no errors or warnings.

# Link View Utility

The Link View utility generates database link views between the Admin, Meta, Data, TE (optional), and BP (optional) database schemas.

**Note:** To run this utility, you must provide the DBA username(s) and password(s).

## To run the Link View utility:

1. Start the Costpoint DB Wizard using the batch CPWebDBWizard.cmd file.
2. From the list of **Available options**, select **Link-View**, and click **Next**.
3. Select the system to use, and click **Next**.

The Enter Passwords page displays.

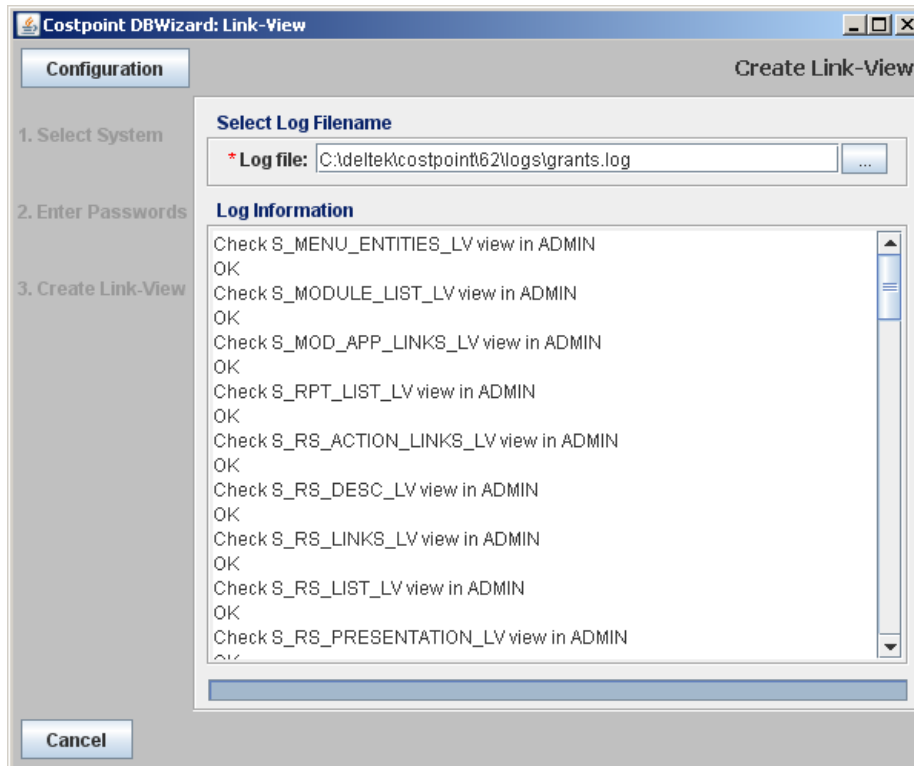
4. Complete the following information:
  - **DBA User:** Enter the database administrator's username.
  - **Password:** Enter the database administrator's password.
5. Click **Test** to validate the database connection for the entered DBA username and password.

**Note:** If your system uses more than one database instance, then you have to enter the DBA information for each database instance.



6. Click **Next**.

The Create Link-View page displays.



7. If necessary, change the log filename and/or path.
8. Click **Run** to start the process.

You can monitor the progress of process in the **Log Information** field.

## Error Messages

If the process fails for any reason or errors are encountered, the utility will display a detailed error message.

# Apply License Utility

The Apply License Utility utility allows you apply the License file to a database.

## To run the Apply License utility:

1. Start the Costpoint DB Wizard using the batch CPWebDBWizard.cmd file.
2. From the list of **Available options**, select **Apply License**, and click **Next**.
3. Select the system to apply the license file to, and click **Next**.

Costpoint DBWizard: Apply License

Configuration Select System

1. Select System

2. Select License file

3. Run Apply License

System

\*Select System : C70RDO

CP System

Host: HQ1DBDEV6

Port: 1521

Instance: ORC3

User: CPSYSTEM

URL: jdbc:oracle:thin:@HQ1DBDEV6:1521:ORC3

Test

CP Admin

Host: HQ1DBDEV6

Port: 1521

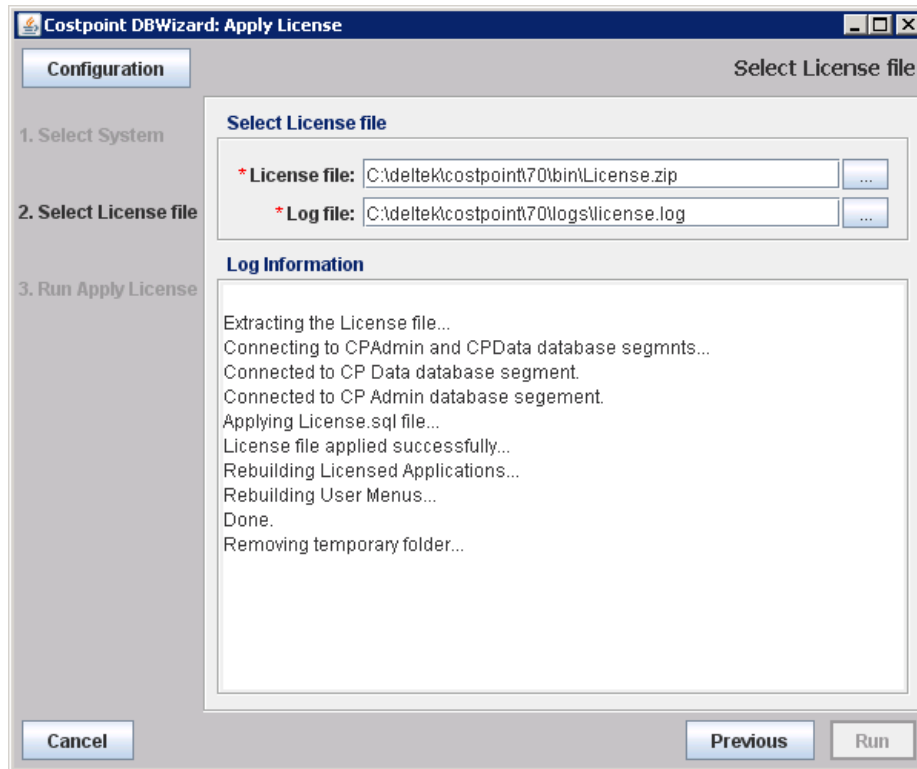
Instance: ORC2

User: CPADMIN

URL: jdbc:oracle:thin:@HQ1DBDEV6:1521:ORC2

Cancel Next

4. Select the License file, and then click **Run** to start the process.



You can monitor the progress of the process in the **Log Information** field.

After the license has been applied with the DBWizard, please either restart the Costpoint 8 Window's service (Weblogic ) or run the Rebuild Global Settings Application Process in Costpoint.

## Error Log

If the process fails for any reason or errors are encountered, an error log displays.

# Remove License Utility

The Remove License Utility allows you to remove the licenses for a selected products from a database.

## To remove the license for a product:

1. Start the Costpoint DB Wizard using the batch CPWebDBWizard.cmd file.
2. From the list of **Available options**, select **Remove License**, and click **Next**.
3. On the Select System page of the wizard, select the system to apply the license file to, and click **Next**.

Costpoint DBWizard: Remove License

Configuration

Select System

1. Select System

2. Select Products

3. Review and Remove

System

\* Select System : C71RADM

CP System

Host: HQ1DBDEV10\SQLINSTANCE3

Port:

Database Name: C71METRADM14

User: CPSYSTEM

URL: jdbc:weblogic:sqlserver://HQ1DBDEV10\SQLINSTANCE3;DatabaseName=C

Test

CP Admin

Host: HQ1DBDEV10\SQLINSTANCE3

Port:

Database Name: C71ADM14

User: CPADMIN

URL: jdbc:weblogic:sqlserver://HQ1DBDEV10\SQLINSTANCE3;DatabaseName=C

Cancel

Next

4. On the Select Products page, select the check box next to the product(s) for which you want to remove the license, and click **Next**.

**Costpoint DBWizard: Remove License**

Configuration

1. Select System

2. Select Products

3. Review and Remove

Select Product Licenses To Remove:

☐ Costpoint

☒ Time & Expense

☐ Budgeting & Planning

Log File: c:\Deltek\costpoint\71\logs\removeLicense\_2017\_05\_08\_2.log

Cancel Previous Next

- On the Review and Remove page, click **Run** to start the process.

**Costpoint DBWizard: Remove License**

Configuration

1. Select System

2. Select Products

3. Review and Remove

Review and Remove

Parameter	Value
System:	C71RADO
Log File:	c:\Deltek\costpoint\71\logs\removeLicense_2017_05_08_2.log
Temp Folder:	C:\deltek\costpoint\71\tmp
Modules:	T&E

Log Information

Cancel Previous Run

You can monitor the progress of the process in the **Log Information** field.

After the license has been removed with the DBWizard, either restart the Costpoint 8 Window's service (Weblogic ) or run the Rebuild Global Settings Application Process in Costpoint.

## **Error Log**

If the process fails for any reason or errors are encountered, an error log displays.

# Rebuild User Menus Utility

The Rebuild User Menus utility allows you to rebuild user menus in a selected system.

## To run the Rebuild User Menus utility:

1. Start the Costpoint DB Wizard using the batch CPWebDBWizard.cmd file.
2. From the list of **Available options**, select **Rebuild User Menus**, and click **Next**.
3. Select the system for which to rebuild user menus, and click **Next**.

Costpoint DBWizard: Rebuild User Menus

Configuration Select System

1. Select System

2. Run Rebuild User Menus

System

\* Select System : C70RDO

CP System

Host: HQ1DBDEV6

Port: 1521

Instance: ORC3

User: CPSYSTEM

URL: jdbc:oracle:thin:@HQ1DBDEV6:1521:ORC3

Test

CP Admin

Host: HQ1DBDEV6

Port: 1521

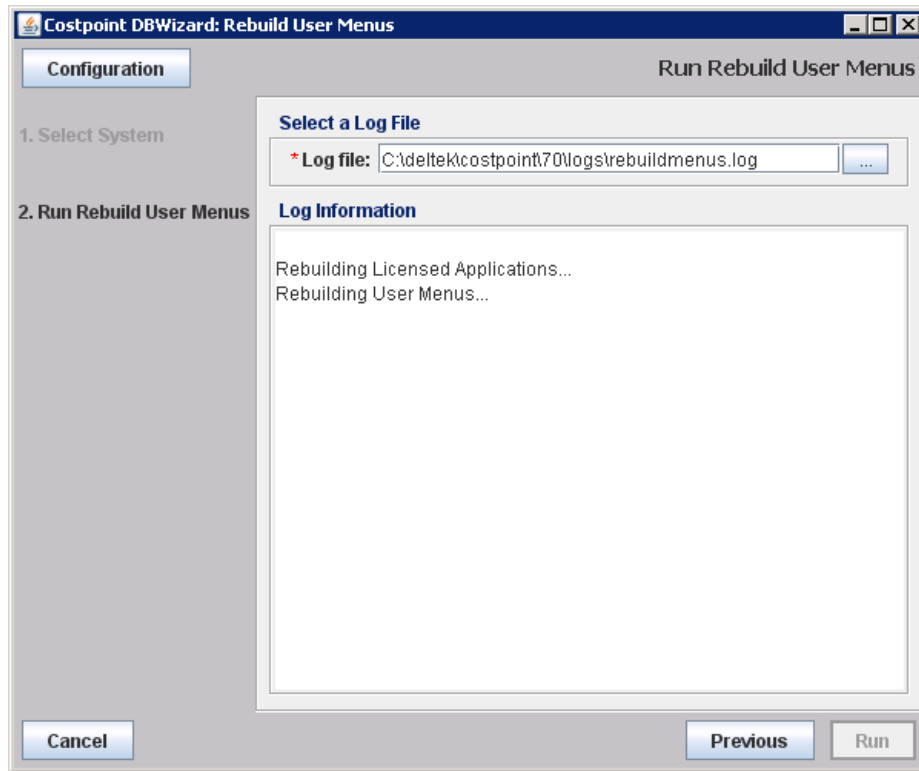
Instance: ORC2

User: CPADMIN

Cancel Next

4. Click **Run** to start the process.

You can monitor the progress of the process in the **Log Information** field.



## Error Log

If the process fails for any reason or errors are encountered, an error log displays.



# Deploy Extension Utility

The Deploy Extension utility allows you to apply extension files to a specific system.

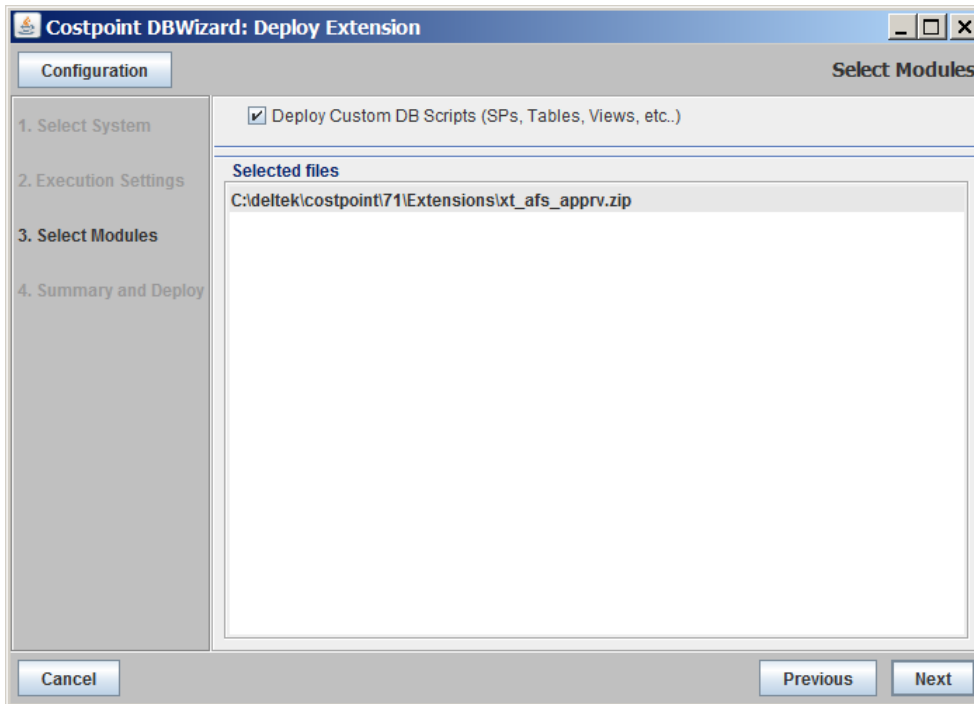
## To run the Deploy Extension utility:

1. Start the Costpoint DB Wizard using the batch CPWebDBWizard.cmd file.
2. From the list of **Available options**, select **Deploy Extension**, and click **Next**.
3. Select the system to use, and click **Next**.

The Execution Settings page displays.

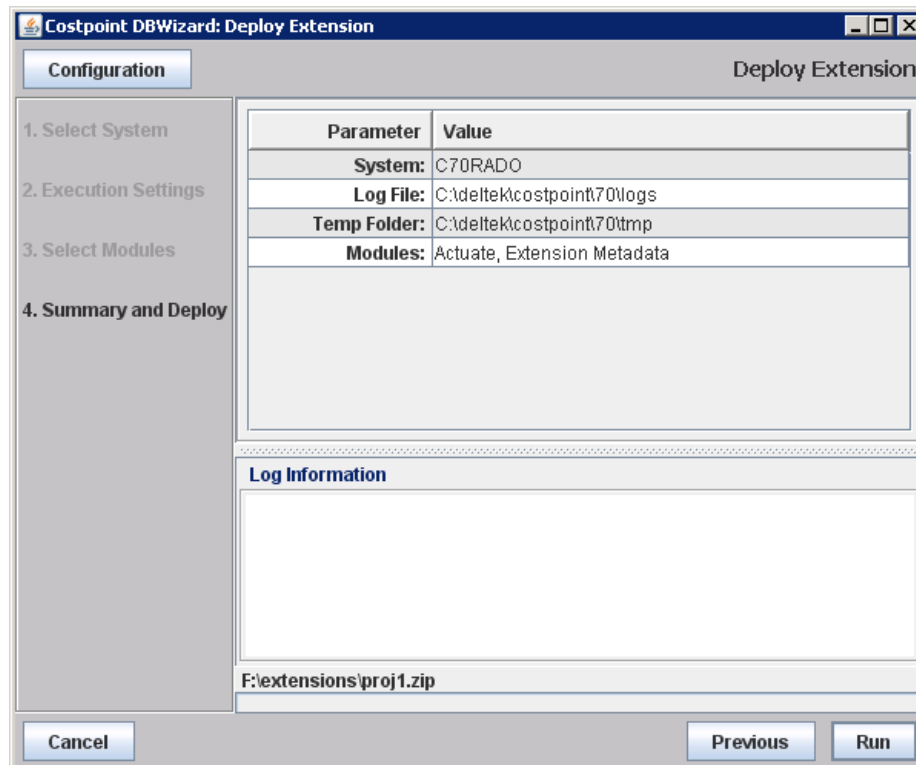
4. In the **Mode** section, select the following:
  - **Single:** Select this option to apply a single hotfix file.
    - **Extension File:** If you select the **Single** option, then enter, or click the browse button to select, the path to the hotfix file.
  - **Multiple:** Select this option to apply multiple extensions from a specified folder.
    - **Extension Folder:** If you select the **Multiple** option, then enter, or click the browse button to select, the path to the folder that contains the extension files.
5. Click **Next**.

The Select Modules page displays.



6. Optional. If your package contains a stored procedure, create tables, views, or other database objects SQL scripts to be applied, select the **Deploy Custom DB Scripts** check box.
7. Click **Next**.

The Summary page displays.



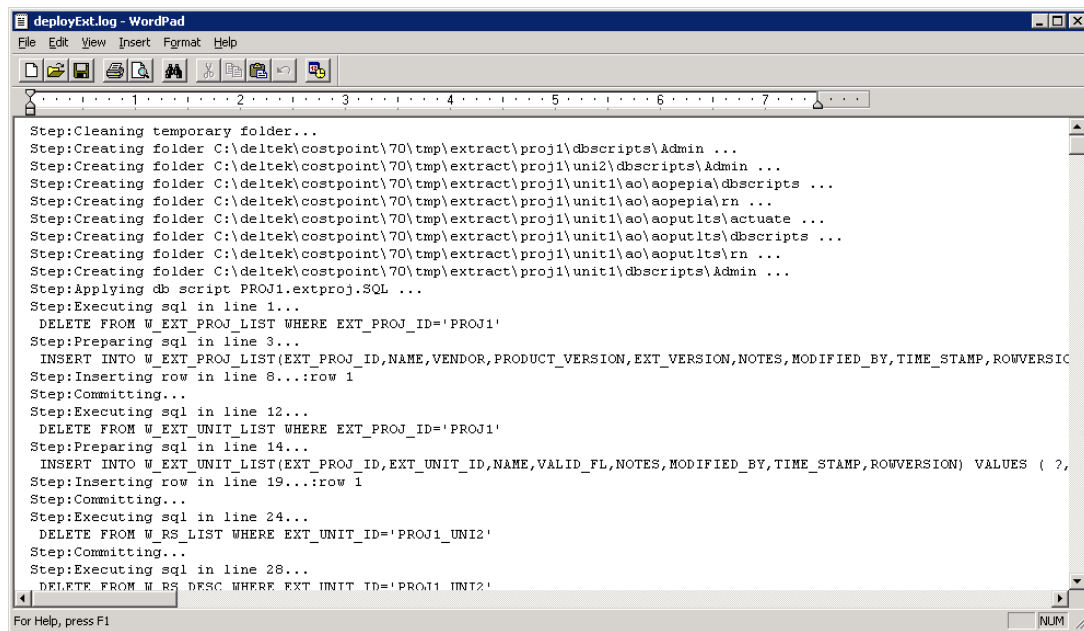
8. Verify that the information is correct and click **Run** to start the process.

You can monitor the progress of the process in the **Log Information** field. If the Extension contains Java classes, the WebLogic server (or all WebLogic nodes if given deployment has more than 1 server) needs to be restarted to make changes to Java side effective.

**Note:** Deltak highly recommends shutting Costpoint down before deploying Extensions with Java classes (through UI or API that is covered later in this document) to avoid issues with locked files and to make custom classes effective.

## Error Log

If the process fails for any reason or errors are encountered, an error log similar to the following displays.



```

Step:Cleaning temporary folder...
Step:Creating folder C:\deltak\costpoint\70\tmp\extract\proj1\dbscripts\Admin ...
Step:Creating folder C:\deltak\costpoint\70\tmp\extract\proj1\unit1\dbscripts\Admin ...
Step:Creating folder C:\deltak\costpoint\70\tmp\extract\proj1\unit1\ao\aoepia\dbscripts ...
Step:Creating folder C:\deltak\costpoint\70\tmp\extract\proj1\unit1\ao\aoepia\rn ...
Step:Creating folder C:\deltak\costpoint\70\tmp\extract\proj1\unit1\ao\aooutlts\actuate ...
Step:Creating folder C:\deltak\costpoint\70\tmp\extract\proj1\unit1\ao\aooutlts\dbscripts ...
Step:Creating folder C:\deltak\costpoint\70\tmp\extract\proj1\unit1\ao\aooutlts\rn ...
Step:Creating folder C:\deltak\costpoint\70\tmp\extract\proj1\unit1\dbscripts\Admin ...
Step:Applying db script PROJ1.extproj.SQL ...
Step:Executing sql in line 1...
DELETE FROM W_EXT_PROJ_LIST WHERE EXT_PROJ_ID='PROJ1'
Step:Preparing sql in line 3...
INSERT INTO W_EXT_PROJ_LIST(EXT_PROJ_ID,NAME,VENDOR,PRODUCT_VERSION,EXT_VERSION,NOTES,MODIFIED_BY,TIME_STAMP,ROWVERSION) VALUES ( ?,
Step:Inserting row in line 8...:row 1
Step:Committing...
Step:Executing sql in line 12...
DELETE FROM W_EXT_UNIT_LIST WHERE EXT_PROJ_ID='PROJ1'
Step:Preparing sql in line 14...
INSERT INTO W_EXT_UNIT_LIST(EXT_PROJ_ID,EXT_UNIT_ID,NAME,VALID_FL,NOTES,MODIFIED_BY,TIME_STAMP,ROWVERSION) VALUES ( ?,
Step:Inserting row in line 19...:row 1
Step:Committing...
Step:Executing sql in line 24...
DELETE FROM W_RS_LIST WHERE EXT_UNIT_ID='PROJ1_UNIT2'
Step:Committing...
Step:Executing sql in line 28...
DELETE FROM W_RS_DESC WHERE EXT_UNIT_ID='PROJ1_UNIT2'
  
```

## Required Deploy Extension Database Tables

The Deploy Extension utility uses the following tables for extension file registration.

Table Name	Description
W_EXT_PROJ_LIST	This table contains list of Extensibility Projects deployed to the system.
W_EXT_UNIT_LIST	This table contains list of Extensibility Units deployed to the system.

# Remove Extension Utility

The Remove Extension utility allows you to delete extension files from a specific system.

To run the Remove Extension utility:

1. Start the Costpoint DB Wizard using the batch CPWebDBWizard.cmd file.
2. From the list of **Available options**, select **Remove Extension**, and click **Next**.
3. Select the system to use, and click **Next**.

The Execution Settings page displays.

Costpoint DBWizard: Remove Extension

Select Extensions

Configuration

1. Select System

2. Select Extensions

3. Delete Extensions

Project	Name
PROJ1	ext proj 1
XT_1	One
XT_1234567890	12345678901234567890123456789012345678901234567890123...
XT_149847	def 149847
XT_AITEST1	Test Project 1
XT_ALEXE_TEST	Alexey Test PSR
XT_D148370	FW TEst 148370
XT_DEMO_6546	testing for new query
XT_FWTEST1	Framework Test 1
XT_FWTEST11	Framework Test 11
XT_FWTEST4	Framework Test 4
XT_FWTEST5	Framework Test 5
XT_FWTEST6	Framework Test 6
XT_FWTEST7	Framework Test 7
XT_MMER_TEST	Michelle's Project
XT_MMER_TEST2	Michelle's XT Proj2
AAAAAAAAA!!!!!!!	

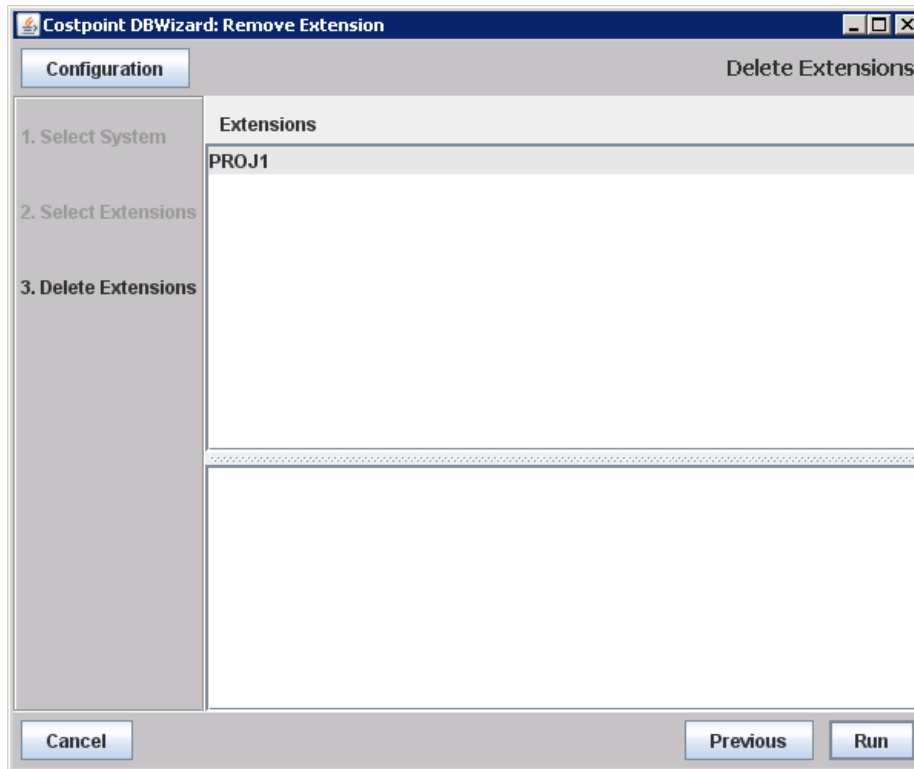
Log File: C:\deltak\costpoint\70\logs\removeExt.log

Cancel Previous Next

4. Select the extension(s) that needs to be removed from a system.
5. Confirm the log file path and filename.
6. Click **Next**.

The Remove Extension page displays.

## Remove Extension Utility

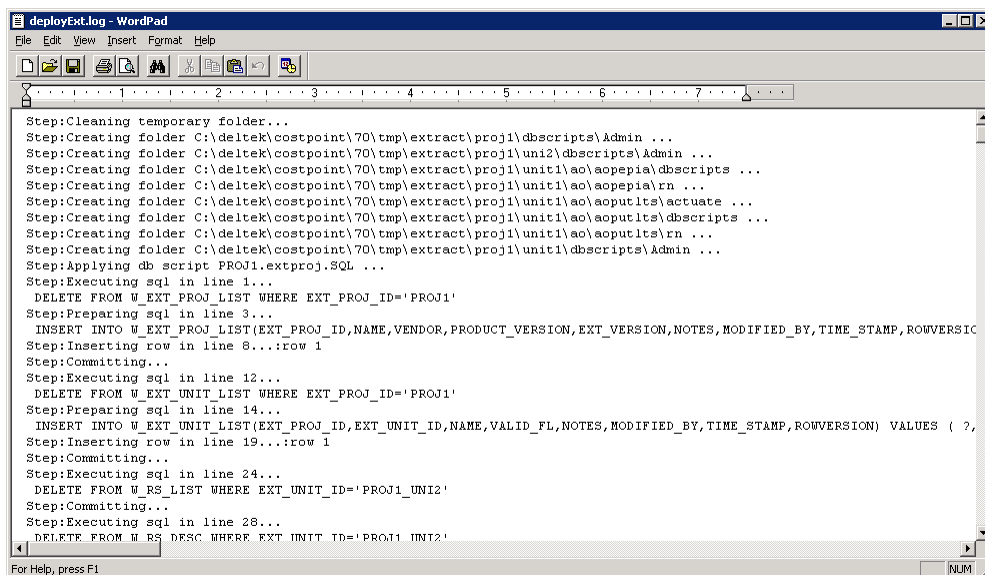


7. Indicate which extension(s) to remove.
8. Click **Run** to start the process.

You can monitor the progress of the process in the **Log Information** field.

## Error Log

If the process fails for any reason or errors are encountered, an error log similar to the following displays.



In some of the cases, it is possible that after deploying Extensibility Project(s) or after deploying standard hotfixes, your Extensibility Unit(s) will be flagged as invalid. This can happen when the Extensibility application description is no longer compatible with the standard app description. To correct this situation, you will need review and correct your Extension(s). Please review the log file for more details.

## Verify All Extensibility

The Verify All Extensibility utility allows you to verify all Extensibility Units in a selected system. With the Extensibility Console, you can verify Extensibility Projects and Units-one-by one, but the Verify All Extensibility utility verifies all extensions at one time. It can be helpful when bringing up a new system or when you want to re-check the status of all extensions.

### To run the Verify All Extensibility utility:

1. Start the Costpoint DB Wizard using the batch CPWebDBWizard.cmd file.
2. From the list of **Available options**, select **Verify All Extensibility**, and click **Next**.
3. On the Select Schema page of the wizard, select the system for which to run the process, and click **Next**.

Costpoint DBWizard: Verify Extensions

Configuration Select Schema

1. Select Schema

2. Confirmation

3. Verify Extensibility

System

\* Select System : C71RADM

CP System

Host: HQ1DBDEV10\SQLINSTANCE3

Port:

Database Name: C71METRADM14

User: CPSYSTEM

URL: jdbc:weblogic:sqlserver://HQ1DBDEV10\SQLINSTANCE3;DatabaseName=C7

Test

CP Admin

Host: HQ1DBDEV10\SQLINSTANCE3

Port:

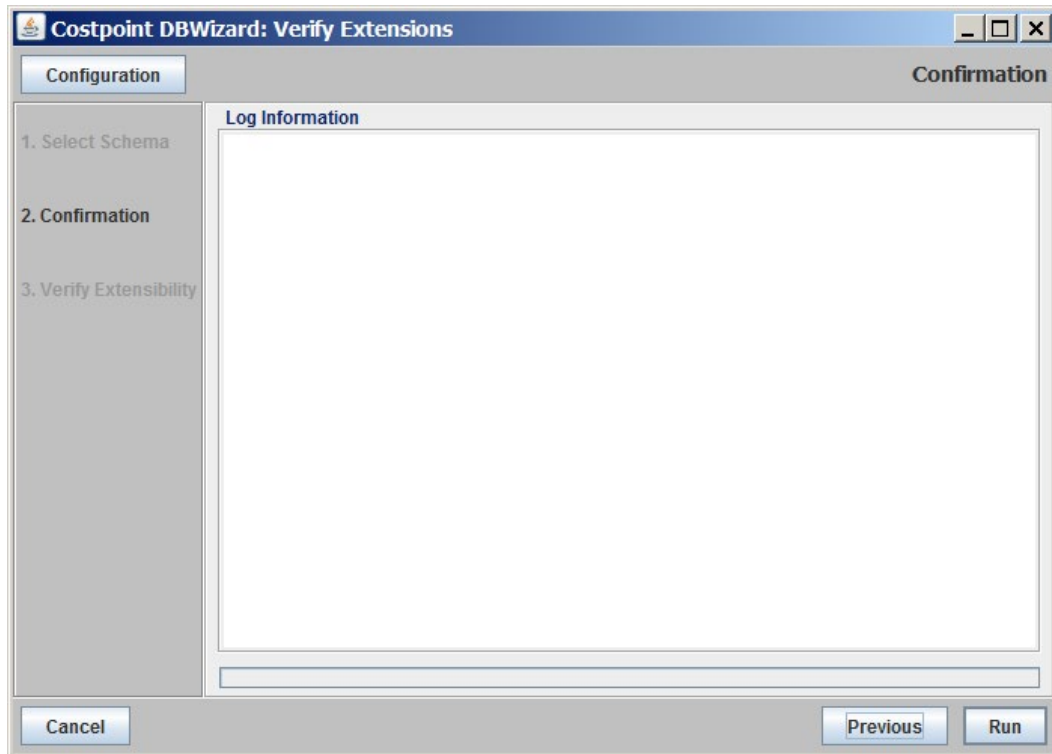
Database Name: C71ADMRADM14

User: CPADMIN

URL: jdbc:weblogic:sqlserver://HQ1DBDEV10\SQLINSTANCE3;DatabaseName=C7

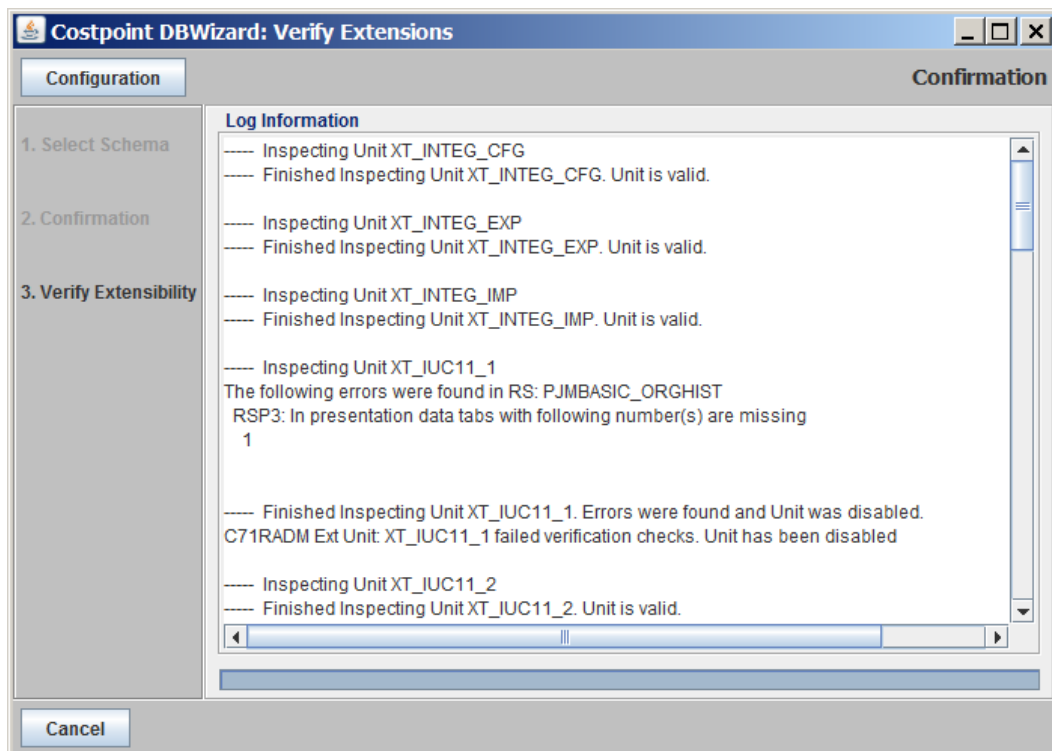
Cancel Next

4. On the Confirmation page, click **Run** to start the process.  
You can monitor the progress of the process in the **Log Information** field.



## Error Log

If the process fails for any reason or errors are encountered, an error log displays:





## Verify All Extensibility

---

If any of your Extensibility Unit(s) are flagged as invalid, you will need review and correct your Extension(s). This can happen when the Extensibility application description is no longer compatible with the standard application description. Please review the log file for more details.

## Command Line API to deploy Web Services and Extensions

In Costpoint 8.1, Deltek created new command line API to deploy Web Services (WS) and/or Packaged Extensibility Projects. If there is a need to automate deployment step, this new API can be used to deploy these two kinds of objects to the Costpoint system. You can deploy just Web Services or Extensions or both kinds of objects in one run. So to deploy WS zip files or Extensibility Projects, you will need to place them in one folder and then pass this folder name, as well as a system name where objects will be deployed, to the new API.

Deltek created a new sample command file—CPWebDeployExtAndWsApi.cmd—in the bin folder where all other Costpoint command files are located (C:\deltek\costpoint\81\bin). In this file, enter a system name and folder name with files to deploy in two parameters:

```
Set SYS_NAME=  
Set FOLDER_TO_DEPLOY=
```

Save and run the cmd file as Administrator. It will validate and deploy files in provided folder. Detailed log of the operation will be generated in the regular Costpoint log folder (C:\deltek\costpoint\81\logs).



---

## About Deltek

Better software means better projects. Deltek delivers software and information solutions that enable superior levels of project intelligence, management and collaboration. Our industry-focused expertise makes your projects successful and helps you achieve performance that maximizes productivity and revenue. [www.deltek.com](http://www.deltek.com)