



Deltek

# Deltek Acumen 8.7

How to Build an InstallShield  
Silent Install for Acumen

**March 22, 2021**

Revised: November 11, 2022

---

While Deltek has attempted to verify that the information in this document is accurate and complete, some typographical or technical errors may exist. The recipient of this document is solely responsible for all decisions relating to or use of the information provided herein.

The information contained in this publication is effective as of the publication date below and is subject to change without notice.

This publication contains proprietary information that is protected by copyright. All rights are reserved. No part of this document may be reproduced or transmitted in any form or by any means, electronic or mechanical, or translated into another language, without the prior written consent of Deltek, Inc.

This edition published March 2021.

© Deltek, Inc.

Deltek's software is also protected by copyright law and constitutes valuable confidential and proprietary information of Deltek, Inc. and its licensors. The Deltek software, and all related documentation, is provided for use only in accordance with the terms of the license agreement. Unauthorized reproduction or distribution of the program or any portion thereof could result in severe civil or criminal penalties.

All trademarks are the property of their respective owners.

---

# Contents

Overview .....	1
Create a Response File .....	2
Basic Offline Installation Using InstallShield .....	3
Sample SETUP.ISS File .....	6
SETUP.ISS .....	6
Verification of the Installation .....	7
Sample SETUP.LOG .....	7
Acumen Activation .....	8
Appendix .....	9

## Overview

Acumen offline installations are created using a tool called InstallShield. The setups are script driven and can be made to run silently. This can be useful when IT wants to deploy Acumen to a user's desktop without the user needing to run the installation.

You can perform an installation and have the setup program record your responses to a file that can be used on future installations to allow them to run silently.

A silent installation installs a product without any prompts to the user when the installation had started. You create a file of installation responses and send the file to end-users at your site, together with the installation. By default, this installation response file is called **Setup.iss**. You can do this without using Microsoft Windows Installer.

## Create a Response File

To create a Setup.iss file and an installation shortcut that uses the Setup.iss file, complete the following steps:

1. On a computer that has no trace of an Acumen installation, open a Command Prompt window.
2. Type the path of the setup file for Acumen by **/r** and **/f1** [path\filename.iss], and press **ENTER**.

For example, type **C:\temp\DeltekAcumen83CumulativeUpdate6.exe /r /f1 "c:\temp\DeltekAcumen83.iss"**, and press **ENTER**.

3. Install and set up Acumen the way you want it set up.
4. When the installation is complete, navigate to the folder specified and locate the **DeltekAcumen83.iss** file.
5. Move the **DeltekAcumen83.iss** file and the Acumen installation files to a folder that the users can access over the network.
6. Create a shortcut file that calls the installation by using your response file. To do this, add the following items to the setup command:

- **/s**
- **f1**
- The path of the **DeltekAcumen83.iss** response file

Make sure that you type a space between each parameter. For example, if both the response file and the **setup.exe** file are located in **g:\Acumen\8.3**, the shortcut must contain the following command:

```
g:\ Acumen\8.3\ DeltekAcumen83CumulativeUpdate6.exe /s /f1 "g:\ Acumen\8.3\ DeltekAcumen83.iss"
```

7. Send the shortcut file to the users who need to install Acumen.

For more information about how to perform a silent InstallShield installation or how to debug a faulty installation, review the following InstallShield Web site:

<http://helpnet.flexerasoftware.com/installshield21helplib/installshield21helplib.htm#StartTopic=helplib/CreateTheResponseFile.htm>

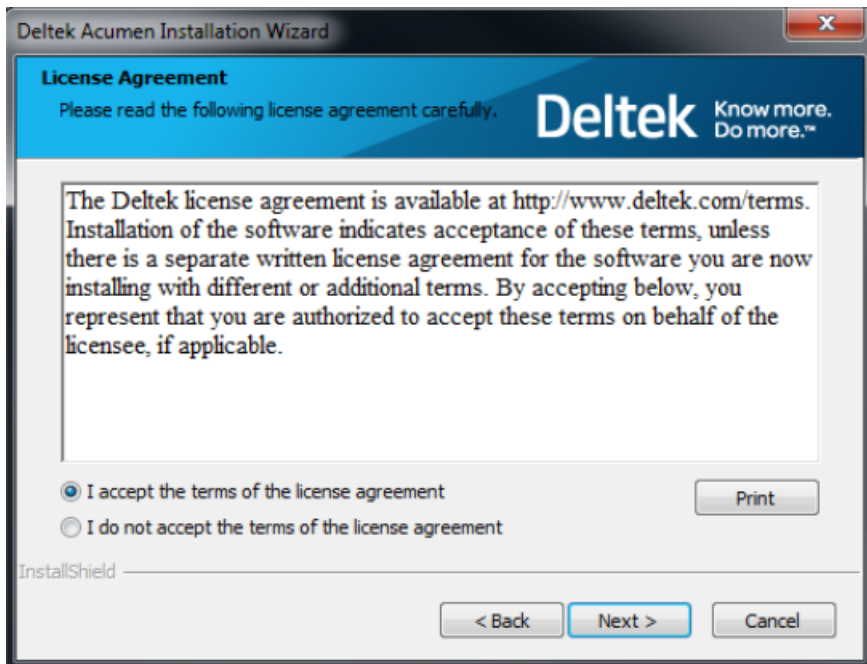
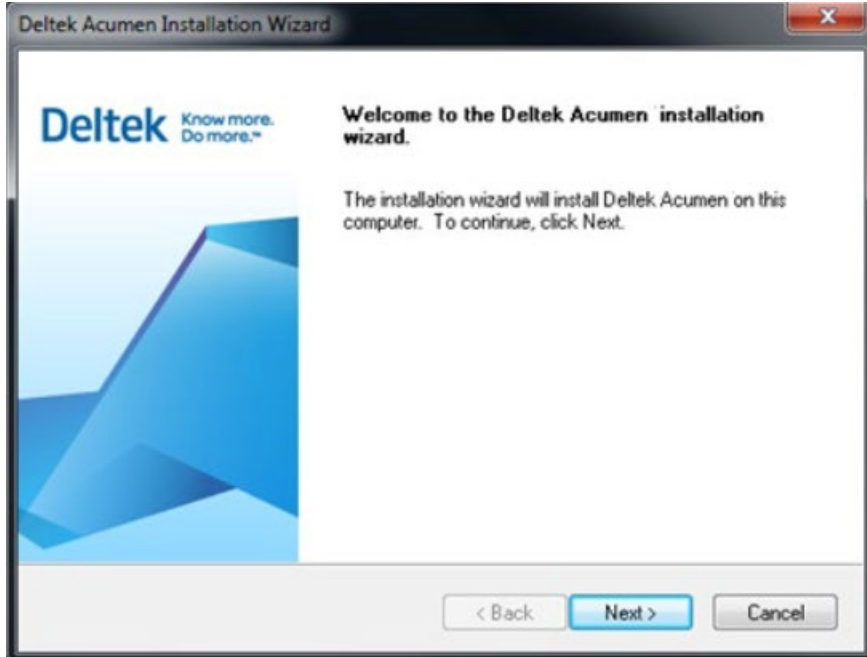
**Note:** If you click the above link and get a "Page Cannot Be Found" error, copy the link and paste it into your browser.

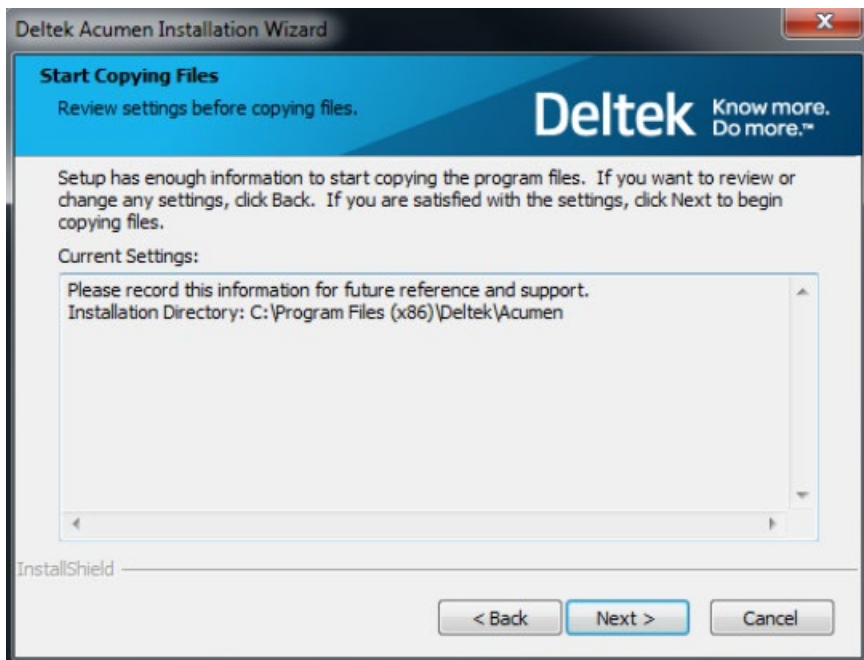
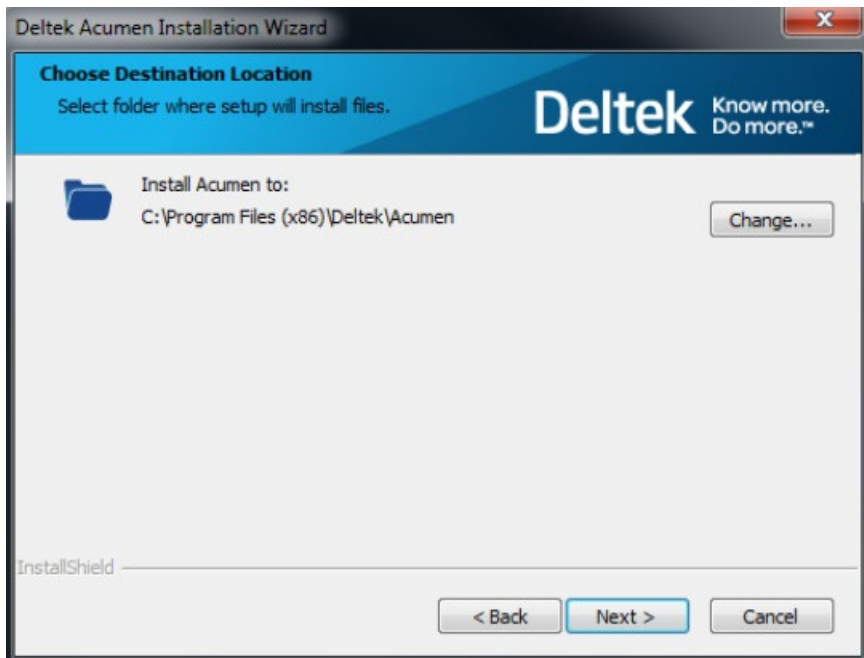
Deltek provides third-party contact information to help you find technical support. This contact information may change without notice. Deltek does not guarantee the accuracy of this third-party contact information.

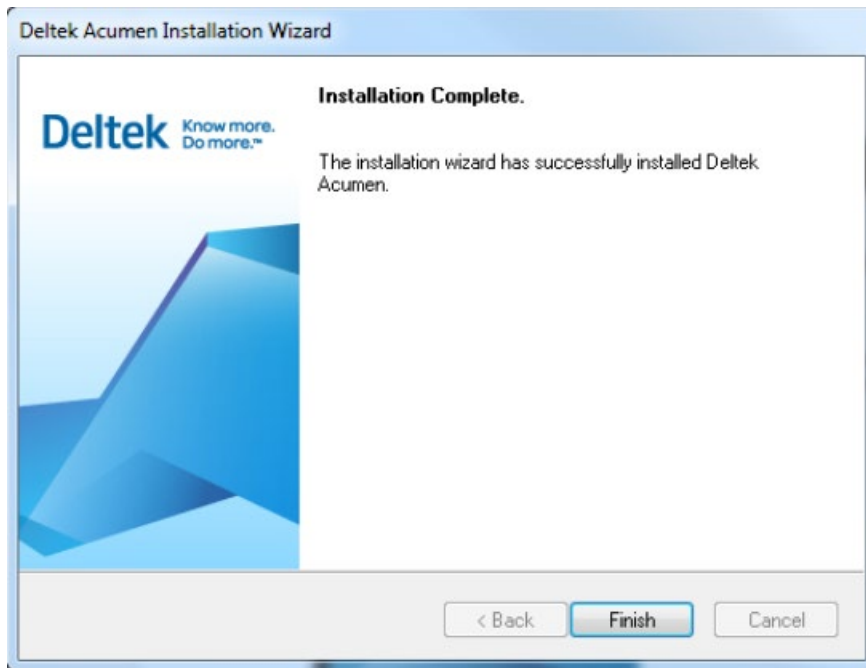
The third-party products that this article discusses are manufactured by companies that are independent of Deltek. Deltek makes no warranty, implied or otherwise, about the performance or reliability of these products.

## Basic Offline Installation Using InstallShield

The following screens display when you perform a typical Acumen installation.







## Sample SETUP.ISS File

This section details the responses captured during the installation shown in the previous section. It shows you how the dialog order (DlgOrder) is captured and the user's response for each screen.

### SETUP.ISS

```
[InstallShield Silent]
Version=v8.30
File=Response File
[File Transfer]
OverwrittenReadOnly=NoToAll
[{{1DB9E122-FE5F-4A32-9867-FB96692EBDBB}}-DlgOrder]
Dlg0={{1DB9E122-FE5F-4A32-9867-FB96692EBDBB}}-SdWelcome-0
Count=5
Dlg1={{1DB9E122-FE5F-4A32-9867-FB96692EBDBB}}-SdLicense2Rtf-0
Dlg2={{1DB9E122-FE5F-4A32-9867-FB96692EBDBB}}-SdAskDestPath2-0
Dlg3={{1DB9E122-FE5F-4A32-9867-FB96692EBDBB}}-SdStartCopy-0
Dlg4={{1DB9E122-FE5F-4A32-9867-FB96692EBDBB}}-SdFinish-0
[{{1DB9E122-FE5F-4A32-9867-FB96692EBDBB}}-SdWelcome-0]
Result=1
[{{1DB9E122-FE5F-4A32-9867-FB96692EBDBB}}-SdLicense2Rtf-0]
Result=1
[{{1DB9E122-FE5F-4A32-9867-FB96692EBDBB}}-SdAskDestPath2-0]
szDir=C:\Program Files (x86)\Deltek\Acumen
Result=1
[{{1DB9E122-FE5F-4A32-9867-FB96692EBDBB}}-SdStartCopy-0]
Result=1
[Application]
Name=Acumen
Version=8.3.0
Company=Deltek
Lang=0409
[{{1DB9E122-FE5F-4A32-9867-FB96692EBDBB}}-SdFinish-0]
Result=1
bOpt1=0
bOpt2=0
```

## Verification of the Installation

When the installation is complete, a **SETUP.Log** file is created in the location where the .ISS file resides. The name and location can be controlled by additional command line parameters during the installation. See the appendix for usage.

A ResultCode of 0 indicates success.

### Sample SETUP.LOG

[InstallShield Silent]

Version=v8.30

File=Log File

[ResponseResult]

ResultCode=0

[Application]

Name=Acumen

Version=8.3.6

Company=Deltek

Lang=0409

You can find information on error codes here:

<http://helpnet.flexerasoftware.com/installshield21helplib/installshield21helplib.htm#StartTopic=helplibrary/SetupLog.htm>

**Note:** If you click the above link and get a “Page Cannot Be Found” error, copy the link and paste it into your browser.

## **Acumen Activation**

The silent installation does not activate the Acumen software. Activation depends on the type of license purchased for Acumen.

There are several license types (named, server, enterprise, and so on) available. Contact your Acumen sales representative for more information about your license.

## Appendix

This appendix includes additional notes that may be helpful in developing a silent installation.

The **setup.exe** files generated with InstallShield inherently support the creation and use of answer files that may be used to silent installation applications. Although it has no logic to handle anything not expected by the answerfile (for example, more or less dialogs, more or less options in a dialog) it can be a helpful means of installation for some applications.

**Note:** Setup.exe command line parameters are not case sensitive; upper case or lower case letter can be used.

Separate multiple command line switches with a space, but do not put a space inside a command line switch (for example, /r/fInstall.ins is valid, but not /r/f Install.ins).

When using long path and filename expressions with switches, enclose the expressions in double quotation marks. The enclosing double quotes tell the operating system that spaces within the quotation marks are not to be treated as command line delimiters.

The supported switches are as follows:

Switch	Description
<b>/d</b>	Runs setup in debug mode. It also includes a [pathonly] option for specifying the path of the Setup.rul file.  For more information, refer to the Visual Debugger help file.
<b>/f [path\CompiledScript]</b>	Specifies an alternate compiled script. Unless the compiled script (.ins file) also resides in the same directory as that of Setup.exe, the full path to the compiled script must be specified.  _setup.dll must also reside in the same directory as the .ins file. For example, setup /f test.ins will launch setup using Test.ins instead of Setup.ins.
<b>/f1[path\ResponseFile]</b>	Specifies an alternate location and name of the response file (.iss file). If this option is used when running InstallShield Silent, the response file is read from the folder/file specified by [path\ResponseFile].  If this option is used along with the /r option, the response file is written to the folder/file specified by [path\ResponseFile].  If an alternate compiled script is specified using the /f switch, the /f1 switch entry must follow the /f switch entry.
<b>/f2[path\LogFile]</b>	Specifies an alternate location and name of the log file created by InstallShield Silent. By default, Setup.log log file is created and stored in the same directory as that of Setup.ins.  If an alternate compiled script is specified using the /f switch, the /f2 switch entry must follow the /f switch entry.
<b>/m[filename]</b>	Causes Setup.exe to generate a Management Information Format (.mif) file automatically at the end of the setup. Do not include a path as the .mif file is always placed in the Windows folder.

Switch	Description
	[filename] is optional. If you do not specify a filename, the resulting file is called Status.mif.
<b>/m1[serial number]</b>	Tells setup to place the indicated serial number in the created .mif file.
<b>/m2[locale string]</b>	Tells setup to place the indicated locale in the .mif file. English (ENU) is the default; refer to Microsoft documentation for a complete listing of locale strings.
<b>/r</b>	Causes Setup.exe to automatically generate a silent setup file (.iss file), which is a record of the setup input, in the Windows folder.
<b>/s</b>	Runs InstallShield Silent to execute a silent setup.
<b>/SMS</b>	Prevents a network connection and Setup.exe from closing before the setup is complete. This switch works with setups originating from a Windows NT server over a network. Note that SMS must be uppercase; this is a case-sensitive switch.
<b>/uninst</b>	Runs the setup as an uninstallation without reading the script.
<b>/verbose</b>	Provides more detailed information when a Setup.exe error occurs.

---

## About Deltek

Better software means better projects. Deltek delivers software and information solutions that enable superior levels of project intelligence, management and collaboration. Our industry-focused expertise makes your projects successful and helps you achieve performance that maximizes productivity and revenue. [www.deltek.com](http://www.deltek.com)