

# **Deltek Budgeting and Planning®**

## **Technical Overview and System Requirements**

**January 2011**



13880 Dulles Corner Lane  
Herndon VA 20171  
TEL: 703.734.8606  
FAX: 703.734.1146



While Deltek has attempted to verify that the information in this document is accurate and complete, some typographical or technical errors may exist. The recipient of this document is solely responsible for all decisions relating to or use of the information provided herein.

The information contained in this publication is effective as of the publication date below and is subject to change without notice.

This publication contains proprietary information that is protected by copyright. All rights are reserved. No part of this document may be reproduced or transmitted in any form or by any means, electronic or mechanical, or translated into another language, without the prior written consent of Deltek, Inc.

This edition published January 2011

© 2011 Deltek, Inc.

Deltek's software is also protected by copyright law and constitutes valuable confidential and proprietary information of Deltek, Inc. and its licensors. The Deltek software, and all related documentation, is provided for use only in accordance with the terms of the license agreement. Unauthorized reproduction or distribution of the program or any portion thereof could result in severe civil or criminal penalties.

All trademarks are the property of their respective owners.

## Contents

|   |    |
|---|----|
| Introduction .....                                      | 5  |
| The Examples .....                                      | 5  |
| Consulting .....  | 5  |
| Contact Information .....                               | 5  |
| Additional Notes .....                                  | 6  |
| If You Need Assistance .....                            | 7  |
| Customer Services .....                                 | 7  |
| Customer Care Connect Site .....                        | 7  |
| Budgeting and Planning Tier Model and Technologies..... | 9  |
| Presentation (Client) Tier .....                        | 9  |
| Web/Application Tier .....                              | 9  |
| Database Tier.....                                      | 10 |
| n-tier architecture .....                               | 11 |
| Installation Profile: 1- 25 Concurrent Users .....      | 12 |
| Installation Profile: 25+ Concurrent Users .....        | 13 |
| Workstation .....                                       | 14 |
| Workstation .....                                       | 14 |

## Introduction

Deltek Budgeting and Planning installations can be unique based on customer needs, number of users, budget and desired performance level.

Budgeting and Planning uses a multiple tier architecture typically consisting of:

- A database server
- An IIS/Application Server
- A workstation

This document is meant to serve as a guideline for hardware requirements and provides your firm's IT department with information about the technical deployment of Budgeting and Planning.

## The Examples

The examples are based on the number of concurrent Budgeting and Planning users:

- A small/medium installation for 1-25 concurrent users
- A medium/large installation for 25 or more concurrent users

Deltek has designed multiple Budgeting and Planning deployment models to ensure the best fit with your firm's environment.

It is important to note that the choices of hardware, database, and operating system in these examples represent *guidelines*, are subject to change, and do not replace a needs analysis and site survey with a Deltek Technical Consultant. *Contact a Deltek Technical Systems Engineer for suitability of legacy equipment.*

## Consulting

Deltek, Inc. can provide onsite consulting and training services as well as phone support on a contract or time-and-materials basis.

## Contact Information

Please contact a Deltek Technical Systems Engineer [techse@deltek.com](mailto:techse@deltek.com) for more information.

## Additional Notes



Legal Disclaimer: The recommendations in this document are intended to convey general information and should not be relied upon as a substitute for a professional consultation with Deltek. All the information in this document is provided “as is” and without warranties of any kind, either expressed or implied.



**The evolution of technology dictates the way IT professionals plan their network hardware and software environments. While this document does not account for all possible options in the deployment of Deltek software, it does provide specific recommendations based on testing metrics and years of experience working directly with Deltek customers.**

**Prior to making assumptions on how specific 3<sup>rd</sup> party technologies will perform with Deltek applications, Deltek recommends contacting your sales representative to arrange a discussion with a Deltek Technical Systems Engineer who can help you plan for a cost effective and optimally performing application environment.**

## If You Need Assistance

If you need assistance installing, implementing, or using Budgeting and Planning, Deltek makes a wealth of information and expertise readily available to you.

### Customer Services

For over 20 years, Deltek has maintained close relationships with client firms, helping with their problems, listening to their needs, and getting to know their individual business environments. A full range of customer services has grown out of this close contact, including the following:

- Extensive self-support options through the Customer Care Connect Web portal.
- Phone and email support from Customer Care analysts
- Technical services
- Consulting services
- Custom programming
- Classroom, on-site, and Web-based training



Find out more about these and other services from the Customer Care Connect site.

### Customer Care Connect Site

The Deltek Customer Care Connect site is a support Web portal for Deltek customers who purchase an Ongoing Support Plan (OSP).

The following are some of the many options you have at the Customer Care Connect site:

- Download the latest versions of your Deltek products
- Search Deltek's knowledge base
- Ask questions, exchange ideas, and share knowledge with other Deltek customers through the Deltek Connect Customer Forums
- Display or download product information, such as release notes, user guides, technical information, and white papers
- Submit a support case and check on its progress
- Transfer requested files to a Customer Care analyst
- Use Quick Chat to submit a question to a Customer Care analyst online
- Subscribe to Deltek communications about your Deltek products and services
- Receive alerts of new Deltek releases and hot fixes



If you need assistance using the Customer Care Connect site, the online help available on the site provides answers for most questions

## Access Customer Care Connect

To access the Customer Care Connect site, complete the following steps:

1. Go to <https://support.deltekt.com>.
2. Enter your Customer Care Connect **Username** and **Password**.
3. Click **Log In**.



If you do not have a username and password for the Customer Care Connect site, contact your firm's Deltek Administrator.

If you forget your username or password, you can click the **Account Assistance** button on the login screen for help.



# Budgeting and Planning Tier Model and Technologies

## Presentation (Client) Tier

| Presentation (Client) Tier Technologies |   |
|---|---|
| <b>Operating System</b>                 | <ul style="list-style-type: none"> <li>Windows XP Professional, Windows Vista x32-bit or x64-bit, or Windows 7</li> </ul>   |
| <b>Browser</b>                          | <ul style="list-style-type: none"> <li>Internet Explorer 8.0</li> <li>Internet Explorer 6.0 or 7.0</li> <li>Microsoft.NET Framework v.3.5SP1, the infrastructure of the .NET platform, including the Common Language Runtime and the .NET class library.</li> </ul> |

## Web/Application Tier

The Web/Application Tiers are always installed to the same physical server. Operating system, browser, and system requirements for the Web/Application Tier are described in the following table.

| Web/Application Tier Technologies |   |
|-----------------------------------|---|
| <b>Operating System</b>           | <ul style="list-style-type: none"> <li>Windows 2003 Server x32-bit or x64-bit</li> <li>Windows 2008 Server Service Pack 2, x32-bit or x64-bit</li> </ul>  |
| <b>Browser</b>                    | <ul style="list-style-type: none"> <li>Internet Explorer 6.0 or higher</li> </ul>   |
| <b>System</b>                     | <ul style="list-style-type: none"> <li>IIS 6.0/7.0; depends on your OS version</li> <li>Microsoft.NET Framework v.3.5SP1, the infrastructure of the .NET platform, including the Common Language Runtime and the .NET class library. Run in .NET 2.0 compatibility mode</li> <li>Native SQL client/OLE DB for database connectivity</li> <li>SMTP services for alerts (optional)</li> </ul> |

## Database Tier

The Database Tier is the repository of all your firm's data and business information.

Operating system, browser, and system requirements for the Database Tier are described in the following table.

For more information regarding the x64 architecture, go to the Microsoft Web site:

<http://www.microsoft.com/windowsserver2003/64bit/x64/editions.mspx>.

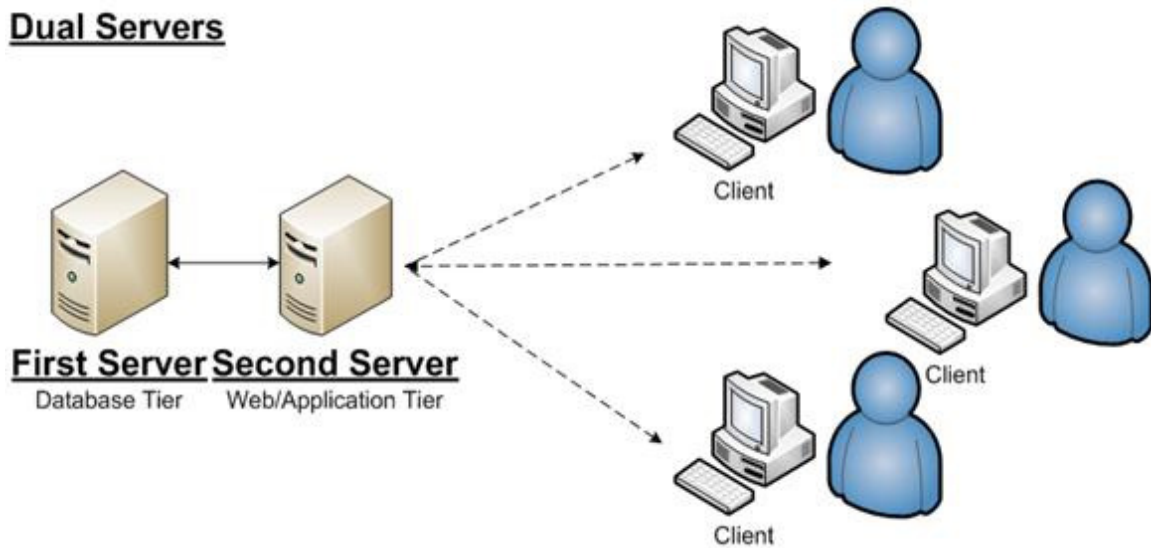
Please contact the Deltek Technical Systems Engineers at [techse@deltek.com](mailto:techse@deltek.com) with any questions.

| Database Tier Technologies |  |
|----------------------------|--|
| <b>Operating System</b>    | <ul style="list-style-type: none"><li>▪ Windows 2003 Server x32-bit or x64-bit</li><li>▪ Windows 2008 Server Service Pack 2, x32-bit or x64-bit</li></ul>  |
| <b>System</b>              | <ul style="list-style-type: none"><li>▪ Microsoft SQL Server 2005 SP3 x32-bit or x64-bit, Standard or Enterprise editions</li><li>▪ Microsoft SQL Server 2008 SP1, x32-bit or x64-bit, Standard or Enterprise editions</li><li>▪ Microsoft.NET Framework v.3.5SP1, the infrastructure of the .NET platform, including the Common Language Runtime and the .NET class library. Run in .NET 2.0 compatibility mode</li></ul> |

## n-tier architecture

In an n-tier installation, the processing is occurring on both the web/application and database server. It is recommended that the database tier reside on a different computer than the web/application server. The connection between the web/application server and the database server should limit the number of routers and firewalls that can adversely affect data traffic. Additional users can be supported with the addition of multiple application servers.

### Dual Servers



## Installation Profile: 1- 25 Concurrent Users

| Tier                               | Hardware/Software Required  | Determining Factors                         |
|------------------------------------|---|---|
| <b>MS SQL Server Database Tier</b> | <p>Server Class Machine:</p> <ul style="list-style-type: none"> <li>▪ Dual or quad-core 2.8 GHz or faster CPU</li> <li>▪ 4+ GB Physical memory</li> <li>▪ 200 GB Hard drive</li> <li>▪ RAID 5 Disk array</li> <li>▪ Windows Server 2003 or Windows Server 2008 Standard Edition Service Pack 2, 32/64-bit</li> <li>▪ Microsoft SQL Server 2005/2008 SP1 Standard/Enterprise</li> <li>▪ 100 MB Network card</li> </ul>                                 | <p>Database Size</p> <p>Database Growth</p> |
| <b>IIS/Application Tier</b>        | <p>Server Class Machine:</p> <ul style="list-style-type: none"> <li>▪ Dual/Quad-core 2.33+ GHz or faster CPU</li> <li>▪ 4 GB Physical memory</li> <li>▪ Windows Server 2003 or Windows Server 2008 Standard Edition Service Pack 2, 32/64-bit</li> <li>▪ 40GB Hard drive space</li> <li>▪ 100 MB Network card</li> <li>▪ .Net Framework 3.5 SP1 in .NET 2 compatibility mode</li> <li>▪ For SQL: SQL Server ole db or native client driver</li> </ul> | <p>Total Users</p>                          |

## Installation Profile: 25+ Concurrent Users

| Tier                               | Hardware/Software Required   | Determining Factors              |
|------------------------------------|--|----------------------------------|
| <b>MS SQL Server Database Tier</b> | Server Class Machine: <ul style="list-style-type: none"> <li>2 x Dual or quad-core 2.8 GHz or faster CPU</li> <li>4+ GB Physical memory</li> <li>200GB Hard drive</li> <li>RAID 5 Disk array</li> <li>Windows Server 2003 or Windows Server 2008 Standard Edition Service Pack 2, 32/64-bit</li> <li>Microsoft SQL Server 2005/2008 SP1 Standard/Enterprise</li> <li>100 MB Network card</li> </ul>                                  | Database Size<br>Database Growth |
| <b>IIS/Application Tier</b>        | Server Class Machine: <ul style="list-style-type: none"> <li>2 x Dual/Quad-core 2.33+ GHz or faster CPU</li> <li>4 GB Physical memory</li> <li>Windows Server 2003 or Windows Server 2008 Standard Edition Service Pack 2, 32/64-bit</li> <li>40GB Hard drive space</li> <li>100 MB Network card</li> <li>.Net Framework 3.5 SP1 in .NET 2 compatibility mode</li> <li>For SQL: SQL Server ole db or native client driver</li> </ul> | Total Users                      |

## Workstation

The following table lists the recommended minimum hardware and software requirements for the Client Tier.

| Tier    | Hardware/Software Required   | Determining Factors |
|---------|--|---------------------|
| Minimum | <ul style="list-style-type: none"><li>▪ Intel 1.8 GHz or higher</li><li>▪ 1 GB RAM</li><li>▪ 40 GB Hard Drive</li><li>▪ 1024x768 SVGA Video Display</li><li>▪ 100 MB Network card</li><li>▪ Windows XP Professional, Vista x32 bit or x64 bit, or Windows 7</li><li>▪ Microsoft Internet Explorer (IE) 6.0 or higher</li><li>▪ Microsoft.NET Framework v.3.5 SP1</li></ul> | Usage               |

## Workstation

The following table lists the recommended hardware and software requirements for the Client Tier.

| Tier    | Hardware/Software Required   | Determining Factors |
|---------|--|---------------------|
| Minimum | <ul style="list-style-type: none"><li>▪ Intel 2.0 GHz or higher</li><li>▪ 2 GB RAM</li><li>▪ 40 GB Hard Drive</li><li>▪ 100 Mb Network Card</li><li>▪ Windows XP Professional, Vista x32 bit or x64 bit, or Windows 7</li><li>▪ Microsoft Internet Explorer (IE) 6.0 or higher</li><li>▪ Microsoft.NET Framework v.3.5 SP1</li></ul> | Usage               |