



**Deltek**. ProPricer >

# Active Directory User Sync Quick Start Guide

# Contents

Welcome to the Active Directory User Sync .....	1
Requirements .....	2
User Interface .....	3
Navigation pane .....	4
Service Manager .....	5
Service .....	6
AD Connection .....	7
Azure AD Connection .....	8
Group Mappings .....	9
Azure AD Group Mappings .....	10
Options .....	11
Log .....	13
Ribbons .....	14
File .....	14
Actions ribbon .....	14
Help ribbon .....	14
Skins .....	14
Palettes .....	14
License Information .....	15
Contact Deltek .....	16
Contact information .....	16

# Welcome to the Active Directory User Sync

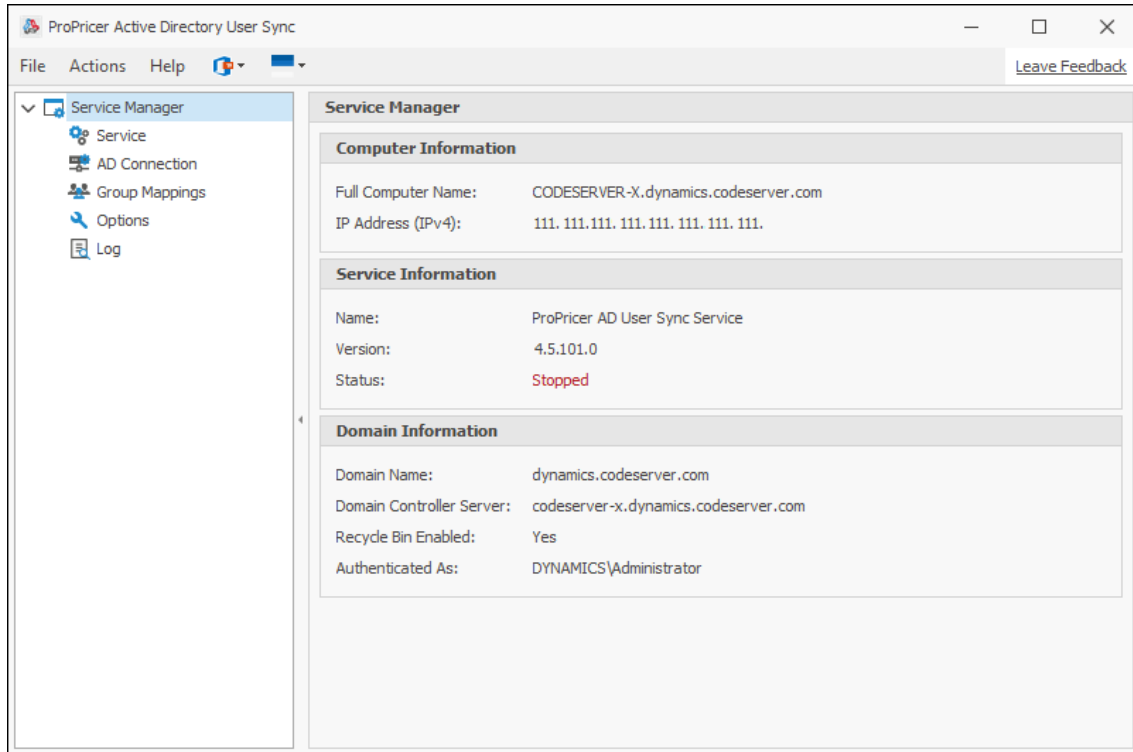
The ProPricer™ Active Directory User Sync allows you to sync users and groups in Microsoft Windows Active Directory (AD) with ProPricer users and roles. When a user or group is created or changed in Active Directory, the users and roles in ProPricer are automatically updated.

## Requirements

- The correct corresponding version of ProPricer. For example, Active Directory User Sync version 4.6.101.0 requires ProPricer version 9.6.101.0.
- ProPricer Application Server version 9.6.101.0.
- A current license key purchased from Deltek, Inc.

# User Interface

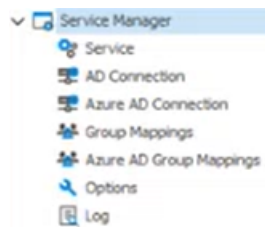
The Active Directory User Sync user interface has three areas: the navigation pane, the ribbons, and the workspace. The following sections of this guide will explain the functions in each of these areas.



## Navigation pane

There are six tabs in the navigation pane that allow you to manage connections to your Active Directory and ProPricer database, map AD groups to ProPricer roles, define settings for the sync process, and more.

- [Service Manager](#)
- [Service](#)
- [AD Connection](#)
- [Azure AD Connection](#)
- [Group Mappings](#)
- [Azure AD Group Mappings](#)
- [Options](#)
- [Log](#)



## Service Manager

The Service Manager tab contains the following three areas:

### Computer Information

- Full Computer Name: The name of the machine running the application.
- IP Address (IPv4): The network IP address of the machine running the application.

### Service Information

- Name: The name of the application.
- Version: The version number of the application.
- Status: The status of the application service.

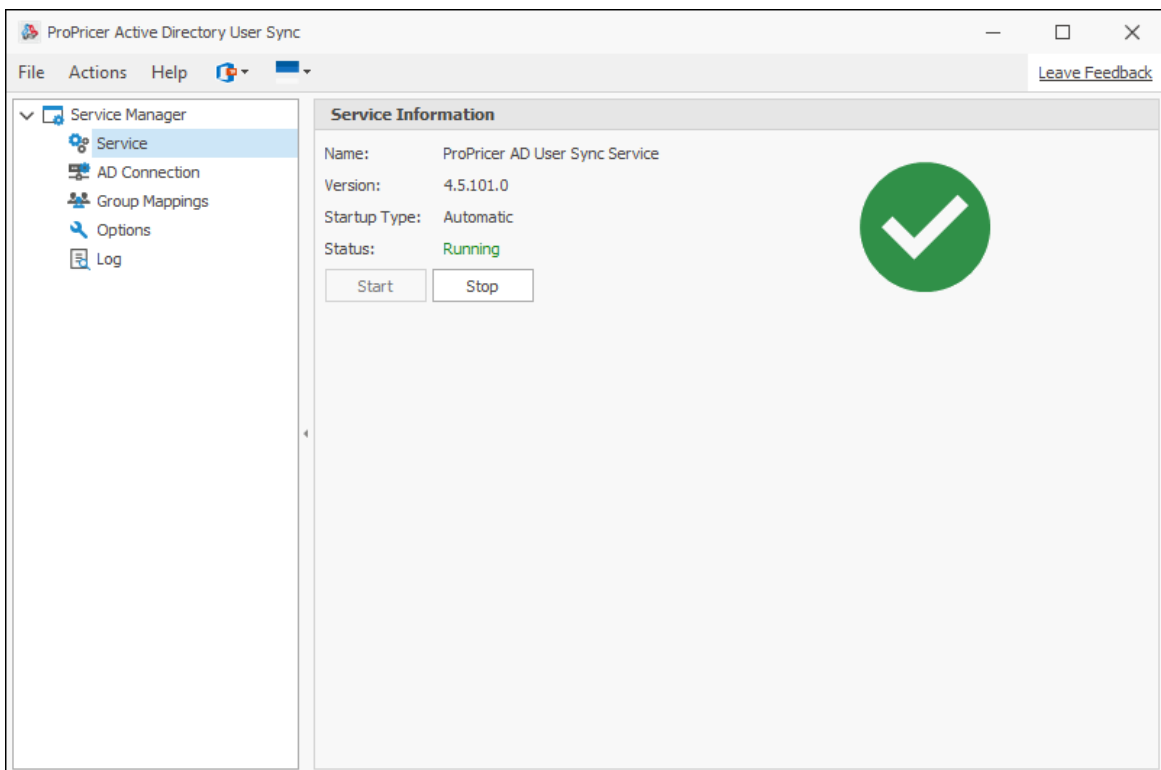
### Domain Information

- Domain Name: The name of the Active Directory domain.
- Domain Controller Server: The server hosting Active Directory.
- Recycle Bin Enabled: Status of the Active Directory Recycle Bin.
- Authenticated As: The user with access to the Active Directory domain controller server.

## Service

The Service tab is where you start or stop the Active Directory User Sync service. It also shows the following fields:

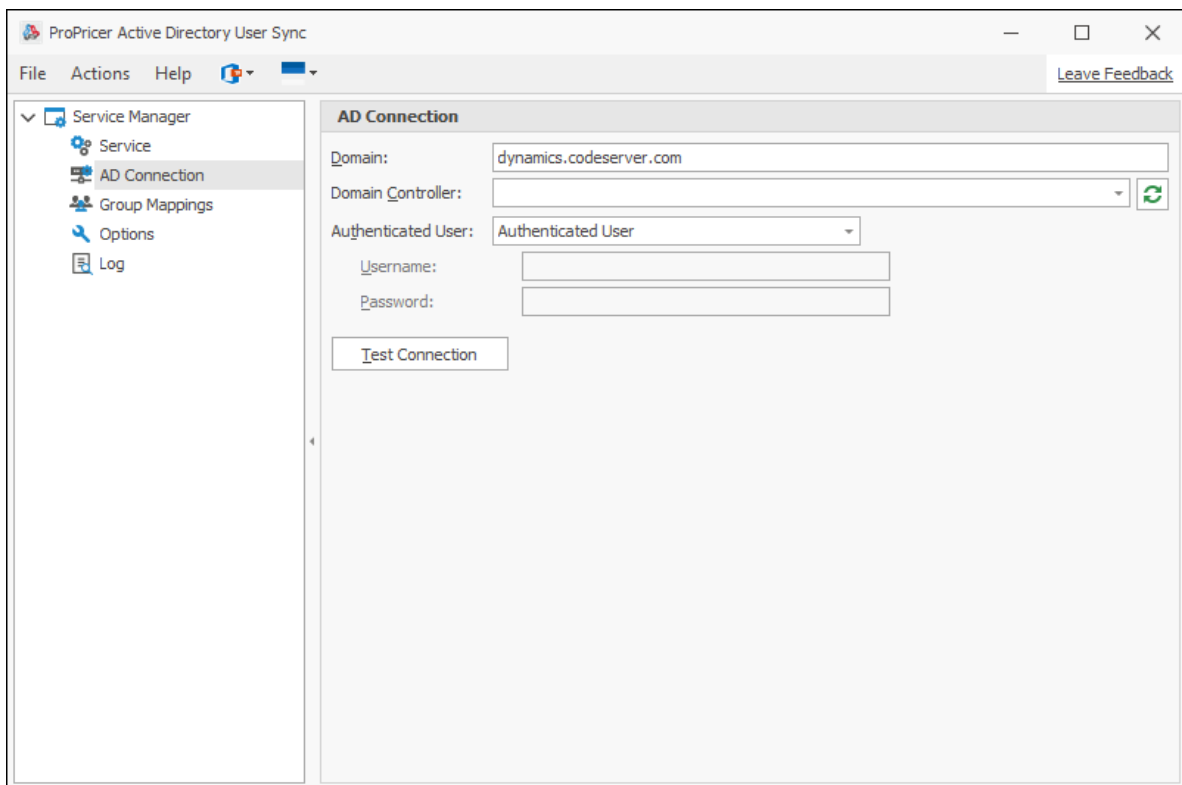
- Name: The name of the application service.
- Version: The version number of the application.
- Startup Type: How the service is started. This can be automatic, manual, or disabled.
- Status: The status of the application service.



## AD Connection

The AD Connection tab is where you connect to your Active Directory. This tab contains the following fields:

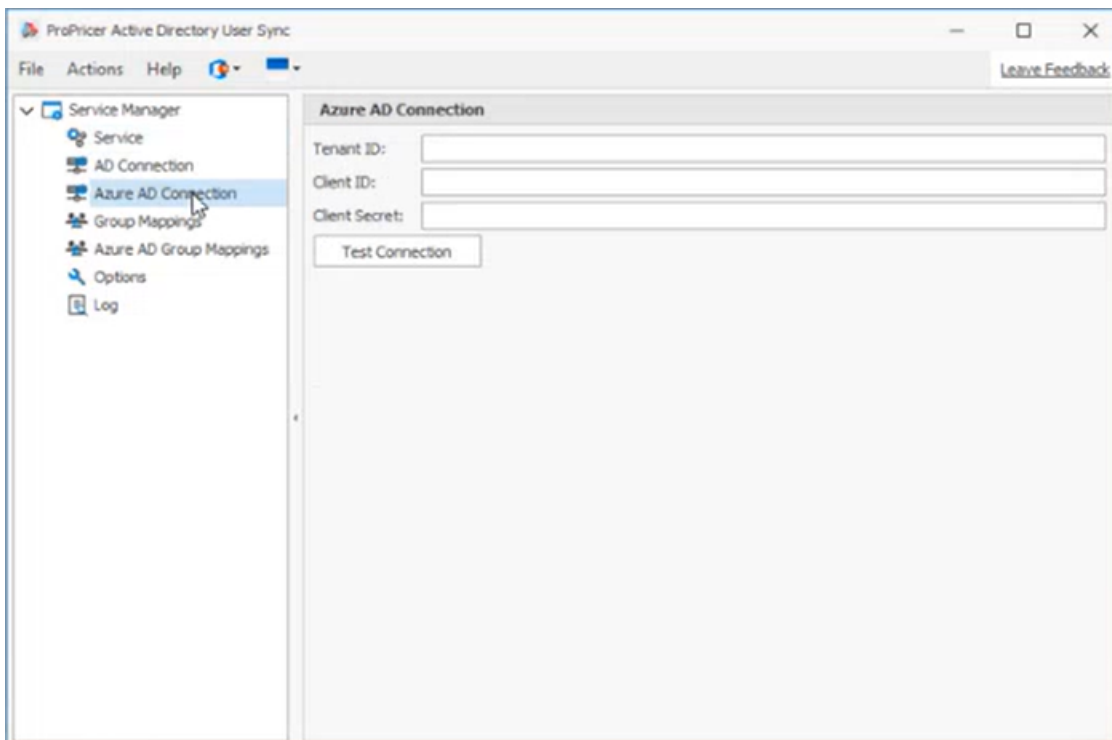
- Domain: The name of the Active Directory domain.
- Domain Controller Server: The server hosting Active Directory.
- Authenticated User: Select one of the following options.
  - Current User: Enter credentials for the user currently signed into Windows.
  - Authenticated User: Enter credentials for a different user.
- Username and Password: Enter the user's login credentials in the Username and Password fields.
- Test Connection: Check that the AD connection is working.



## Azure AD Connection

The AD Connection tab is where you connect to your Active Directory via an Azure connection. This tab contains the following fields:

- Tenant ID
- Client ID
- Client Secret
- Test Connection



## Group Mappings

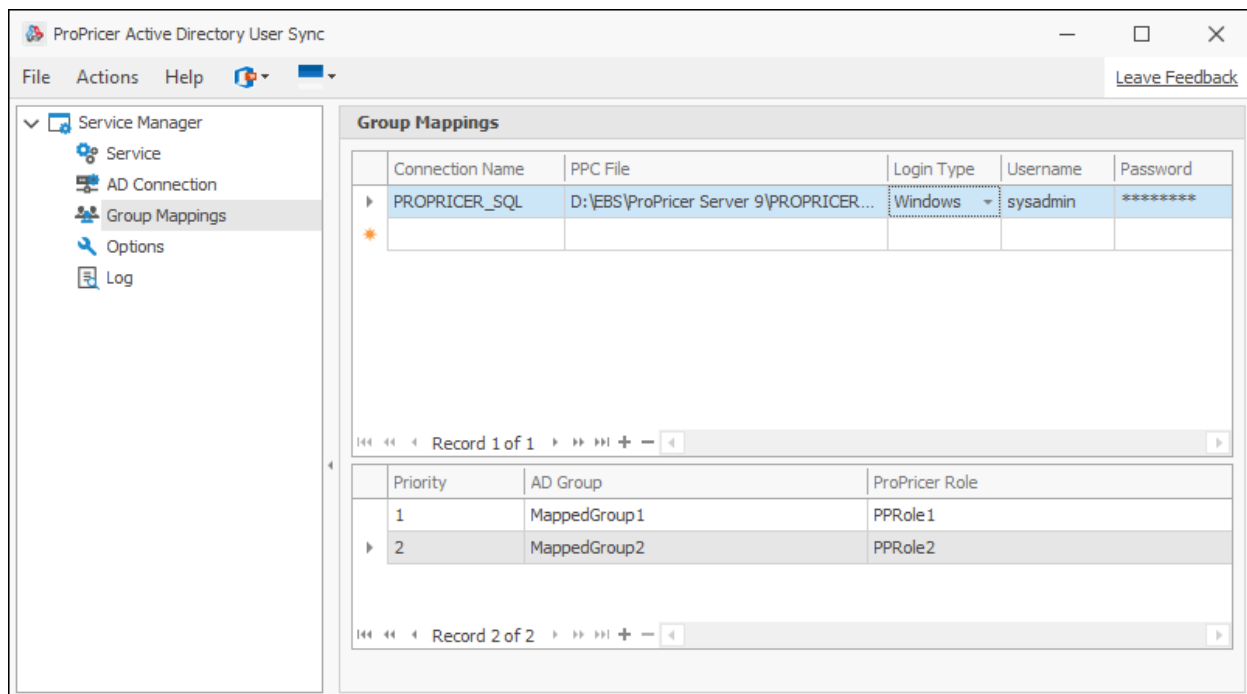
The Group Mappings tab is where you connect to your ProPricer database and map AD groups to ProPricer roles.

The tab contains two grids. The first grid contains the following columns:

- Connection Name: Enter a name for the ProPricer database connection.
- PPC File: Select a ProPricer connection file.
- Login Type: Select either Windows or ProPricer as the login type.
- Username and Password: Enter the ProPricer login credentials in the Username and Password fields.

The second grid contains the following columns:

- Priority: If a user is assigned to more than one AD group, the user will be assigned to the ProPricer role mapped to the group with the highest priority.
- AD Group: Select the AD group that you want to sync with the selected ProPricer role.
- ProPricer Role: Select the ProPricer role that you want to sync with the selected AD group.



## Azure AD Group Mappings

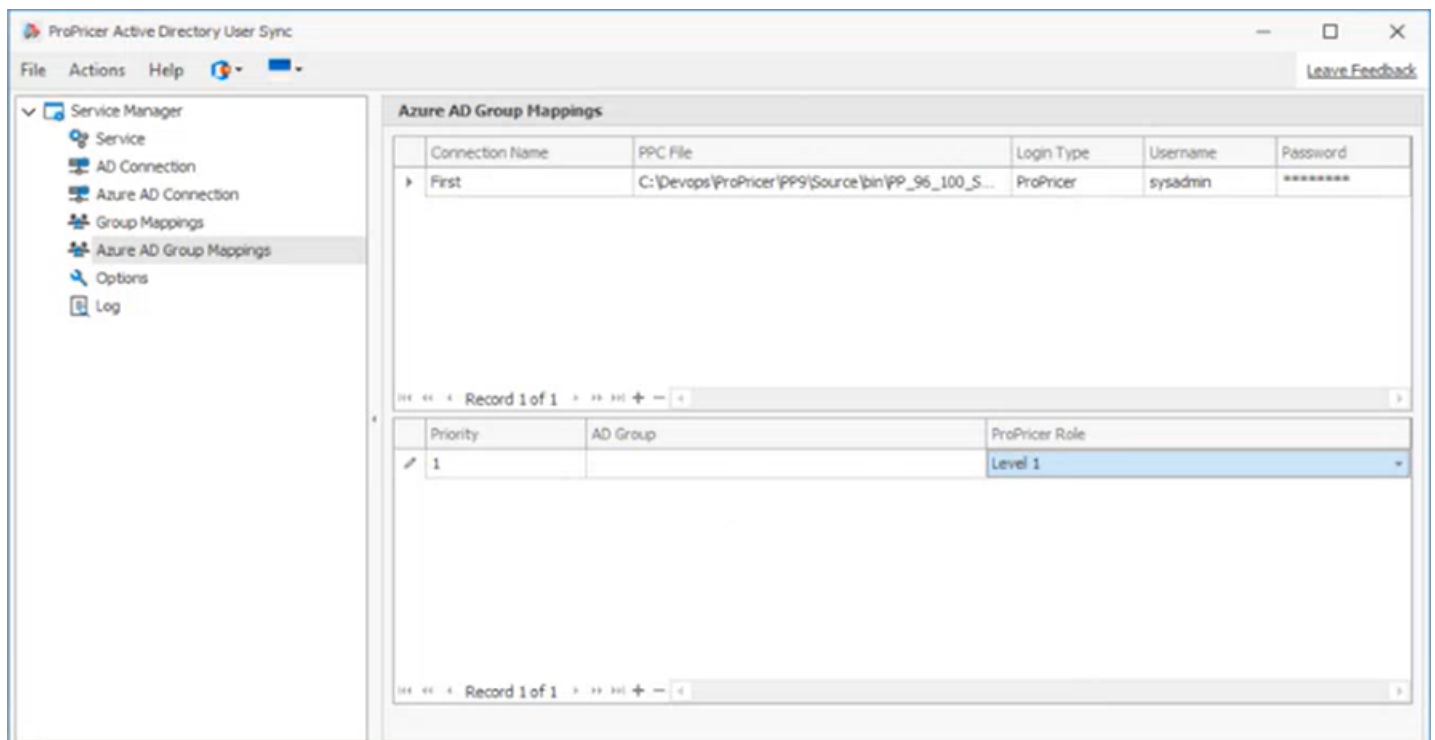
The Azure AD Group Mappings tab is where you connect to your ProPricer database and map Azure AD groups to ProPricer roles.

The tab contains two grids. The first grid contains the following columns:

- Connection Name: Enter a name for the ProPricer database connection.
- PPC File: Select a ProPricer connection file.
- Login Type: Select either Windows or ProPricer as the login type.
- Username and Password: Enter the ProPricer login credentials in the Username and Password fields.

The second grid contains the following columns:

- Priority: If a user is assigned to more than one AD group, the user will be assigned to the ProPricer role mapped to the group with the highest priority.
- AD Group: Select the AD group that you want to sync with the selected ProPricer role.
- ProPricer Role: Select the ProPricer role that you want to sync with the selected AD group.



## Options

The Options tab contains the following three areas:

### General

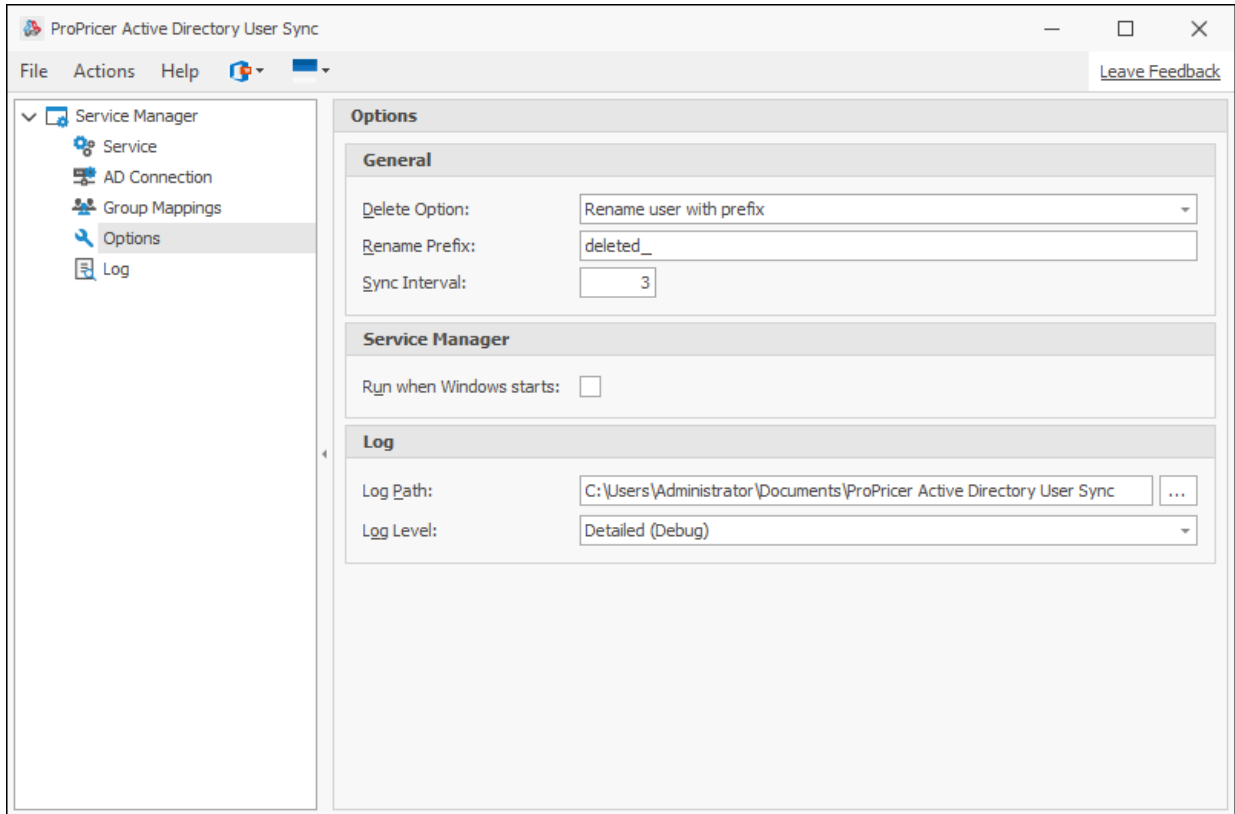
- **Delete Option:** Determine how ProPricer users are changed when an AD group is deleted, a user is removed from an AD group, or a user is deleted. Select one of the following options.
  - **Rename user with prefix:** A prefix is added to the name of the ProPricer user.
  - **Remove user from ProPricer:** The ProPricer user is removed from the ProPricer database.
  - **Do not remove user from ProPricer:** The ProPricer user is not removed from the ProPricer database.
- **Rename Prefix:** If Rename user with prefix is selected in the Delete Option field, enter the prefix.
- **Sync Interval:** Enter the number of minutes between sync processes.

### Service Manager

- **Run when Windows starts:** Open the Active Directory User Sync application when Windows is started.

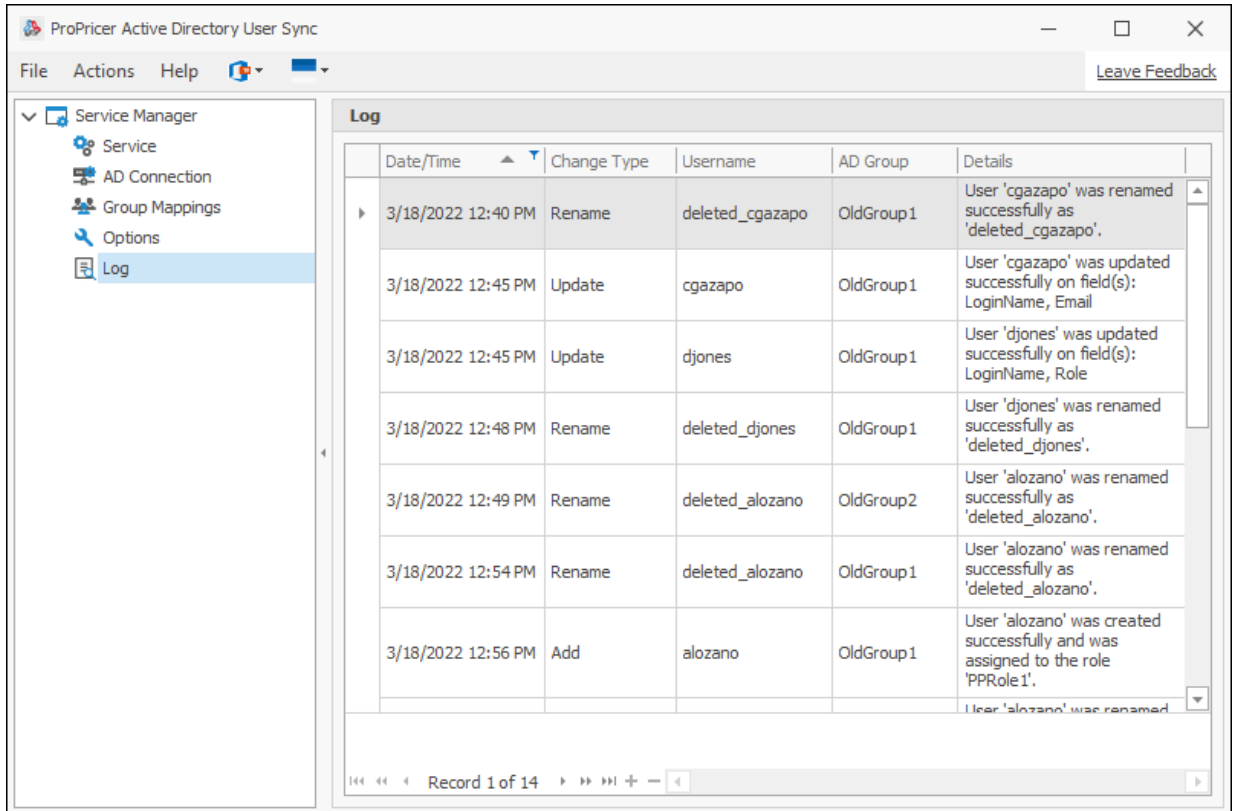
### Log

- **Log Path:** The default location of the application log file.
- **Log Level:** Specify the detail that is shown in the log file using one of the following options:
  - **Overview:** Show which process was run, when it started and ended, and what it did. If an error occurred, a reason is given.
  - **Process Time:** Show the amount of time each process took.
  - **Detailed (Debug):** Provide information for ProPricer technical support to troubleshoot errors and bugs in the import process.



## Log

The Log tab displays the application log, which records information about the sync processes. The location of the log and the level of detail it includes can be set on the Options tab.



## Ribbons

The following ribbon options are available:

### File

- Minimize to System Tray: Minimize the application window to the System Tray.
- Exit: Close the application.

### Actions ribbon

- Refresh: Refresh the application data.

### Help ribbon

- Quick Start Guide: Open a PDF copy of this guide.
- License Information: Manage your registration key and view the registration status of your license.
- About: Open a dialog box with version and copyright information about the application.

### Skins

Skins allow you to select a skin that changes the look and feel of the application.

### Palettes

Palettes allow you to select a color scheme that changes the look and feel of the application.

## License Information

The License Information button allows you to manage your registration key and view the registration status of your license.

Next to the Registration Key fields, there are four buttons for managing the key:



If the key has been copied, click this button to paste the key into the fields.



If a key has been entered, click this button to apply the key.



Click this button to make the registration key fields available for editing.



Click this button to cancel the current action and revert to the last applied registration key.

Once the registration key has been activated, the Installation ID field will show an identification code that can be given to ProPricer Technical Support to resolve issues that you may have with your license.

In the drop-down menu next to Process, you can select how to activate your license with the following options:

- Online: activates your license automatically.
- By Code: directs you to the website <https://register.propricer.com/bycode> to retrieve an activation code that must be entered in the Process By Code dialog box.

The Log License Details button opens a log of information about your license and system which can be helpful for troubleshooting.

The Activate/Deactivate button will activate or deactivate your license.

## Contact Deltek

We welcome any questions, comments, or suggestions you may have about Active Directory User Sync and this Quick Start Guide.

### Contact information

Support Center: [deltek.custhelp.com](https://deltek.custhelp.com)