

Deltek Vision® 7.6

**Technical Overview and System
Requirements: Basic Deployment
(25–150 Employees)**

August 1, 2018

While Deltek has attempted to verify that the information in this document is accurate and complete, some typographical or technical errors may exist. The recipient of this document is solely responsible for all decisions relating to or use of the information provided herein.

The information contained in this publication is effective as of the publication date below and is subject to change without notice.

This publication contains proprietary information that is protected by copyright. All rights are reserved. No part of this document may be reproduced or transmitted in any form or by any means, electronic or mechanical, or translated into another language, without the prior written consent of Deltek, Inc.

This edition published December 2017.

© 2018 Deltek, Inc.

Deltek's software is also protected by copyright law and constitutes valuable confidential and proprietary information of Deltek, Inc. and its licensors. The Deltek software, and all related documentation, is provided for use only in accordance with the terms of the license agreement. Unauthorized reproduction or distribution of the program or any portion thereof could result in severe civil or criminal penalties.

All trademarks are the property of their respective owners.

Contents

Introduction 1

 Deployment Models..... 1

 Vision Tiers..... 2

 Legal Disclaimer 2

 Consulting 2

 Contact Information 2

Unsupported Configurations 3

Distributed Computing 4

Vision Tier Model and Technologies 5

 Presentation (Client) Tier/Vision Smart Client..... 5

 Microsoft Office Desktop Integration (MODI) 5

 Connect for Microsoft Outlook (CMO)..... 6

 Web/Application Tier 6

 Report Tier 7

 Database Tier..... 8

Basic Deployment Hardware and Software Requirements..... 9

 Database, Web Application, and Reporting Tiers 9

 Workstation 10

 Workstation — Client Tier 10

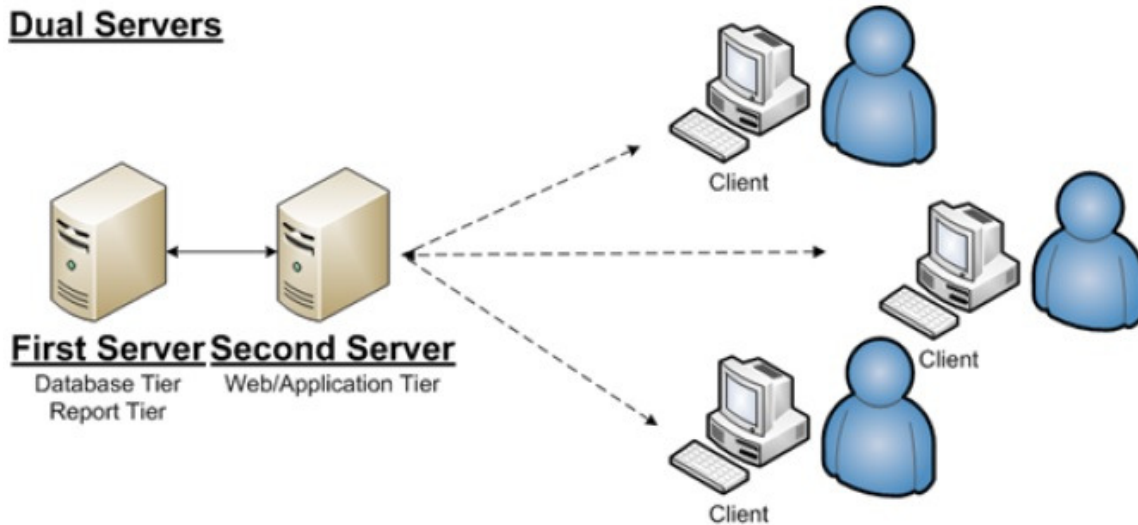
Introduction

This document provides your firm's IT department with information about the technical deployment of Vision using the basic deployment model (two physical servers).

The web/application and reporting tiers can share one physical server, and the database tier resides on its own physical server. Another option is that the database and reporting tiers can share one physical server, and the web/application tier resides on its own physical server.

Basic Deployment (25–150 Employees)

Dual Servers



Deployment Models

Deltek has designed several Vision deployment models to ensure the best fit with your firm's environment:

- **Simple** — One physical server (1–25 employees)
- **Basic** — Two physical servers (25–150 employees)
- **Advanced** — Three or more physical servers (150 or more employees)

For information on the simple and advanced deployments, see the following guides:

- *Deltek Vision Technical Overview & System Requirements: Simple Deployment (1–25 Employees)*
- *Deltek Vision Technical Overview & System Requirements: Advanced Deployment (150 or more Employees)*

Vision Tiers

Vision's tiers are all logical tiers, which can be collapsed or allocated to as many physical servers as needed by your firm.

The Vision tiers that you must deploy are:

- Web/Application
- Reporting
- Database

Legal Disclaimer

The recommendations in this document are intended to convey general information and should not be relied upon as a substitute for a professional consultation with Deltek. All the information in this document is provided “as is” and without warranties of any kind, either expressed or implied.

It is important to note that the choices of hardware, database, and operating system in these examples represent *guidelines* that are subject to change. These guidelines do not replace a needs analysis and site survey with a Deltek Technical Consultant. Contact a Deltek Technical Systems Engineer for suitability of legacy equipment.

The evolution of technology dictates the way IT professionals plan their network hardware and software environments. While this document does not account for all possible options in the deployment of Deltek software, it does provide specific recommendations based on testing metrics and years of experience working directly with Deltek customers.

Prior to making assumptions on how specific third party technologies will perform with Deltek applications, Deltek recommends contacting your sales representative to arrange a discussion with a Deltek Technical Systems Engineer who can help you plan for a cost effective and optimally performing application environment.

Consulting

Deltek, Inc. can provide onsite consulting and training services as well as phone support on a contract or time- and-materials basis.

Contact Information

Please contact a Deltek Technical Systems Engineer techse@deltek.com for more information.

Unsupported Configurations

The Vision installation does **not** support installing any Vision tier on any of the following servers:

- Domain Controller
- Microsoft Exchange Server
- Windows Terminal Server/Citrix Server
- Proxy, Firewall, or ISA Server
- Microsoft SharePoint Portal Server
- Installing any Vision tier (except database tier) on Small Business Server

Using these servers causes significant issues in the performance, reliability, and functionality of the Vision application and the other applications on your network.

If you try to install Vision on any one of these servers, the installation routine will detect the unsupported server and cancel the installation.

Distributed Computing

The architecture of Vision is based on Microsoft .NET, which allows the application to use the distributed computing model. In this model, each Vision tier is responsible for handling a specific set of application processes. This allows each process to pull from its own pool of resources — thereby improving performance and reliability.

The distributed computing model also improves the scalability of Vision, which means you can deploy as many servers as necessary to meet the needs of your clients. In many cases, these changes to the server environment are seamless to end users.

Vision Tier Model and Technologies

Presentation (Client) Tier/Vision Smart Client

Deltek is utilizing Microsoft's ClickOnce technology to deploy our new Smart Client applications. These Windows Forms-based Smart Client applications require that the client workstation has .NET Framework 4.5.2 or 4.6.1 installed. If that pre-requisite is missing, ClickOnce displays an Application Run – Security Warning form and stops the application download. Provided the .NET Framework 4.5.2 or 4.6.1 is installed, a download of approximately 16 MB is initiated and completed on the end users workstation after that one click from the user. After this one click installation the end user is now ready to work with the Smart Client application.

The ClickOnce technology does not require that end users have local administrative rights on their workstation. It allows Vision to recognize when an update is required on the client machine for our Smart Client applications and performs the download automatically. This eliminates the need for IT employees to perform the upgrade process.



The presentation tier communicates only with the web/application server.

Operating system and browser requirements for the presentation (client) tier are described in the following table.

Presentation (Client) Tier Technologies	
Operating System	<ul style="list-style-type: none"> Windows 10 Windows 8.1 or 8 Windows 7 SP1
Browser	<ul style="list-style-type: none"> Internet Explorer 10 or later versions. Microsoft.NET Framework version 4.5.2 or 4.6.1, the infrastructure of the .NET platform, including the Common Language Runtime and the .NET class library.

Microsoft Office Desktop Integration (MODI)

MODI allows you to integrate Vision information with Microsoft Word and Outlook. This includes sharing client, contact, lead, and activity information, as well as searching the Vision text library for data to include in your Word documents.

In addition, you can automatically generate Vision clients, contacts, and activities, and search your Vision database directly from your desktop. MODI allows you to complete all of these actions without opening Vision from the browser.

Connect for Microsoft Outlook (CMO)

Delttek Vision Connect for Microsoft Outlook is add-in software that allows you to perform important and common Vision tasks directly in Microsoft Outlook®. You can manage Vision business appointments, emails, and contacts, as well as Vision customers, activities, and opportunities all from Outlook.

Connect for Microsoft Outlook Client Tier Technologies	
Operating System	<ul style="list-style-type: none"> Windows 10, Windows 8.1, Windows 7 SP1
Email Client	<ul style="list-style-type: none"> Microsoft Office 365 Microsoft Outlook 2013 Microsoft Outlook 2010 32-bit Microsoft Outlook 2007 SP2
Email Server	<ul style="list-style-type: none"> Microsoft Exchange 2013, Microsoft Exchange 2010, or Microsoft Exchange 2007 SP3 — Cached Exchange Mode Only PST Files configured with POP3 Connections to SMTP Servers, (Gmail, Yahoo Business Mail used with Outlook)

Web/Application Tier

The web/application tiers are always installed to the same physical server. The Vision installation does not allow for these tiers to be installed on separate physical servers.

Operating system, browser, and system requirements for the web/application tier are described in the following table.

Web/Application Tier Technologies	
Operating System	<ul style="list-style-type: none"> Windows Server 2016 Windows Server 2012 R2 Windows Server 2012
Browser	Internet Explorer 10 or later (WebLink Utility)
System	<ul style="list-style-type: none"> IIS 10, 8.5, 8.0 depends on your OS version Microsoft .NET Framework v. 4.5.2 or 4.6.1 — the infrastructure of the .NET platform, including the Common Language Runtime and the .NET class library SQLXML — querying, updating and converting XML to relational data Microsoft XML Core Services; allows the Vision application to adhere to XML standards ADO.NET — Database Communication - installed with .NET Framework 4.5.2 or 4.6.1

Report Tier

The report tier contains the SQL Reporting Services software. All Vision reports that are generated, previewed, and printed are done so on this tier.

Operating system, browser, and system requirements for the report tier are described in the following table. Please contact the Deltek Technical Systems Engineers at techse@deltek.com with any questions.

Report Tier Technologies	
Operating System	<ul style="list-style-type: none"> Windows Server 2016 Windows Server 2012 R2 Windows Server 2012
Browser	Internet Explorer 10 or later (SQL Reporting Services Management Console)
System	<ul style="list-style-type: none"> Microsoft SQL Server 2017 CU6, Microsoft SQL Server 2016 SP1 CU6, Microsoft SQL Server 2014 SP2 CU11, Microsoft SQL Server 2012 SP4, Standard, Business Intelligence or Enterprise editions SQLXML — querying, updating and converting XML to rational data Microsoft .NET Framework version 4.5.2 or 4.6.1 — the infrastructure of the .NET platform, including the Common Language Runtime and the .NET class library Microsoft XML Core Services; allows the Vision application to adhere to XML standards ADO.NET — Database Communication - installed with .NET Framework 4.5.2 or 4.6.1
64-Bit Support	Deltek does not support running 32-bit applications on 64-bit operating systems.

Database Tier

The database tier is the repository of all your firm's data and business information.

Operating system, browser, and system requirements for the database tier are described in the following table. Please contact the Deltek Technical Sales Engineers at techse@deltek.com with any questions.

Database Tier Technologies	
Operating System	<ul style="list-style-type: none"> Windows Server 2016 Windows Server 2012 R2 Windows Server 2012
Browser	Internet Explorer 10 or later (SQL Reporting Services Management Console)
System	<ul style="list-style-type: none"> Microsoft SQL Server 2017 CU6, Microsoft SQL Server 2016 SP1 CU6, Microsoft SQL Server 2014 SP2 CU11, Microsoft SQL Server 2012 SP4, Standard, Business Intelligence or Enterprise editions SQLXML — querying, updating and converting XML to rational data Microsoft .NET Framework version 4.5.2 or 4.6.1 — the infrastructure of the .NET platform, including the Common Language Runtime and the .NET class library Microsoft XML Core Services; allows the Vision application to adhere to XML standards ADO.NET — Database Communication - installed with .NET Framework 4.5.2 or 4.6.1

Basic Deployment Hardware and Software Requirements

The number of people using Vision, the Vision modules they are using, and the size of your database all have an effect on the hardware and software requirements for your servers.

Your hardware and software requirements are also affected by the deployment model that you choose.

Database, Web Application, and Reporting Tiers

The following table lists the recommended minimum hardware and software requirements for a Vision basic deployment (two physical server).

Tier	Hardware/Software Required	Determining Factors
Database and Reporting Tiers Note: Report tier can be installed on either the Web Server or the SQL Server. (Additional SQL licensing costs may be incurred if installing SQL Reporting Services on Vision web tier)	<ul style="list-style-type: none"> Server Class Machine 1–2 Quad-core 2.5 GHz or faster CPU 6 GB Physical Memory 64-bit RAID 5 Disk array Windows Server 2016, Windows Server 2012 R2, Windows Server 2012 Microsoft SQL Server 2017 CU6, Microsoft SQL Server 2016 SP1 CU6, Microsoft SQL Server 2014 SP2 CU11, Microsoft SQL Server 2012 SP4, Standard, Business Intelligence or Enterprise editions 	<ul style="list-style-type: none"> Database Size Database Growth Vision Modules
Web/Application and Reporting Tiers Note: Report Tier can be installed on either the Web Server or the SQL Server (Additional SQL licensing costs may be incurred if installing SQL Reporting Services on Vision web tier)	<ul style="list-style-type: none"> Server Class Machine 1–2 Quad-core 2.5 GHz or faster CPU 6 GB Physical Memory 64-bit RAID 1 Disk array Windows Server 2016, Windows Server 2012 R2, Windows Server 2012 Microsoft SQL Server 2016 SP1, Microsoft SQL Server 2014 SP2 CU2, Microsoft SQL Server 2012 SP3 CU3, Standard, Business Intelligence or Enterprise editions 	<ul style="list-style-type: none"> Total Users Power Users User Location Vision Modules Database Size

Workstation


The following table lists the recommended **minimum** hardware and software requirements for the client tier (web application only).

Client Tier	Hardware/Software Required	Determining Factors
Minimum	<ul style="list-style-type: none"> Intel 1.8 GHz or higher 1 GB RAM 40 GB Hard Drive 1024x768 SVGA Video Display 100 Mb Network Card Windows 10, Windows 8.1, Windows 8.0, Windows 7 SP1 Microsoft Internet Explorer (IE) 10 or later Microsoft.NET Framework v.4.5.2 or 4.6.1 	Usage (for web application only; not for workstations using Smart Client application)

Workstation — Client Tier

The following table lists the **recommended** hardware and software requirements for the client tier.

Client Tier	Hardware/Software Required	Determining Factors
Recommended	<ul style="list-style-type: none"> Intel 2.0 GHz or higher 2 GB RAM 40 GB Hard Drive 100 Mb Network Card Windows 10, Windows 8.1, Windows 8.0, Windows 7 SP1 Microsoft Internet Explorer (IE) 10 or later Microsoft.NET Framework version 4.5.2 or 4.6.1 The infrastructure of the .NET platform, including the Common Language Runtime and the .NET 	Usage

A blue geometric graphic consisting of several overlapping triangles and polygons, located in the top-left corner of the page.

Deltek is the leading global provider of enterprise software and information solutions for professional services firms, government contractors, and government agencies. For decades, we have delivered actionable insight that empowers our customers to unlock their business potential. Over 14,000 organizations and 1.8 million users in approximately 80 countries around the world rely on Deltek to research and identify opportunities, win new business, optimize resource, streamline operations, and deliver more profitable projects. Deltek – Know more. Do more.®

deltek.com