


Deltek Costpoint Cloud

Configuring Microsoft® Azure

May 15, 2020



While Deltek has attempted to verify that the information in this document is accurate and complete, some typographical or technical errors may exist. The recipient of this document is solely responsible for all decisions relating to or use of the information provided herein.

The information contained in this publication is effective as of the publication date below and is subject to change without notice.

This publication contains proprietary information that is protected by copyright. All rights are reserved. No part of this document may be reproduced or transmitted in any form or by any means, electronic or mechanical, or translated into another language, without the prior written consent of Deltek, Inc.

This edition published May 2020.

© Deltek, Inc.

Deltek's software is also protected by copyright law and constitutes valuable confidential and proprietary information of Deltek, Inc. and its licensors. The Deltek software, and all related documentation, is provided for use only in accordance with the terms of the license agreement. Unauthorized reproduction or distribution of the program or any portion thereof could result in severe civil or criminal penalties.

All trademarks are the property of their respective owners.



Contents

Microsoft Azure Active Directory Gallery	1
Submit the SSO Setup Service Request	2
Add and Configure Costpoint into Your Azure Admin Portal	3
Set Up Costpoint User Accounts for Azure.....	9

Microsoft Azure Active Directory Gallery

You can access Deltek Costpoint via a SAML-based Single Sign On with your Azure Active Directory account. Setting up the SSO with Microsoft Azure AD is a simple, three-step process.

Step	Procedure
1	Submit the SSO Setup Service Request
2	Add and Configure Costpoint into your MS Azure Admin Portal
3	Set up your Costpoint User Accounts for MS Azure

Note: If you are already set up for SAML SSO authentication in Costpoint Cloud, you will need to set up a second configuration for the Costpoint Mobile T&E in the Cloud. Follow the instructions in this guide to set up your configuration. See the *Deltek Costpoint Mobile Time and Expense in the Cloud Administrator Guide* for more information on Costpoint Mobile T&E in the Cloud.

Submit the SSO Setup Service Request

You must be on Cognos 11 prior to enabling Azure SSO.

To submit the SSO setup service request:

1. Provide the following information in the Service Request:
 - Fully Qualified Domain that your users authenticate against (for example, ACME.Local).
 - Indicate which systems you want SAML enabled on.
2. Deltek will provide you with one XML file per Costpoint system on your account.

The files will be attached to your SSO Setup Service Request ticket. You will need these files to complete the remaining steps.

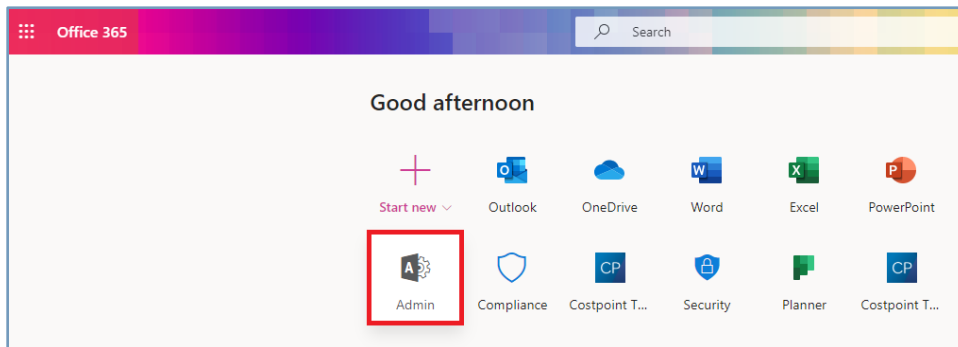
Note: If you are a Costpoint Mobile T&E customer, Deltek will provide you with two sets of URLs (one for Costpoint and one for Costpoint Mobile T&E).

Add and Configure Costpoint into Your Azure Admin Portal

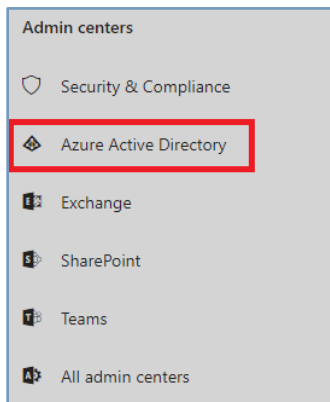
Use the information provided in the SSO Setup Service Request to perform the initial configuration of MS Azure.

To add and configure Costpoint into your MS Azure Admin portal:

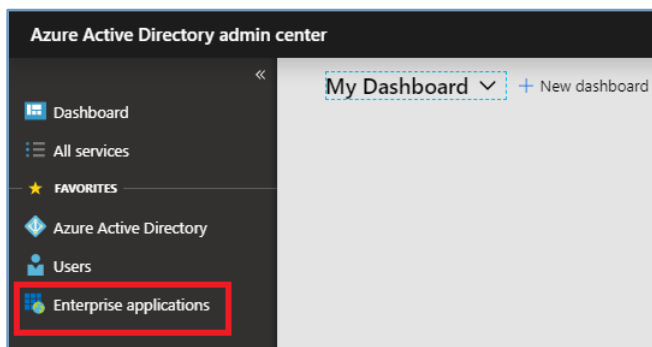
1. Log into the MS Azure Admin Portal using the admin account with your company.



2. Locate and click **Azure Active Directory**.

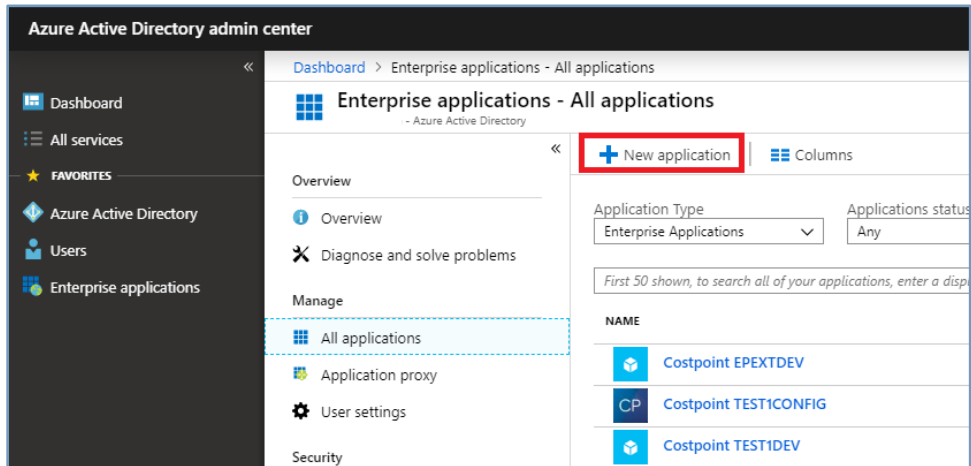


3. Click **Enterprise Applications**.

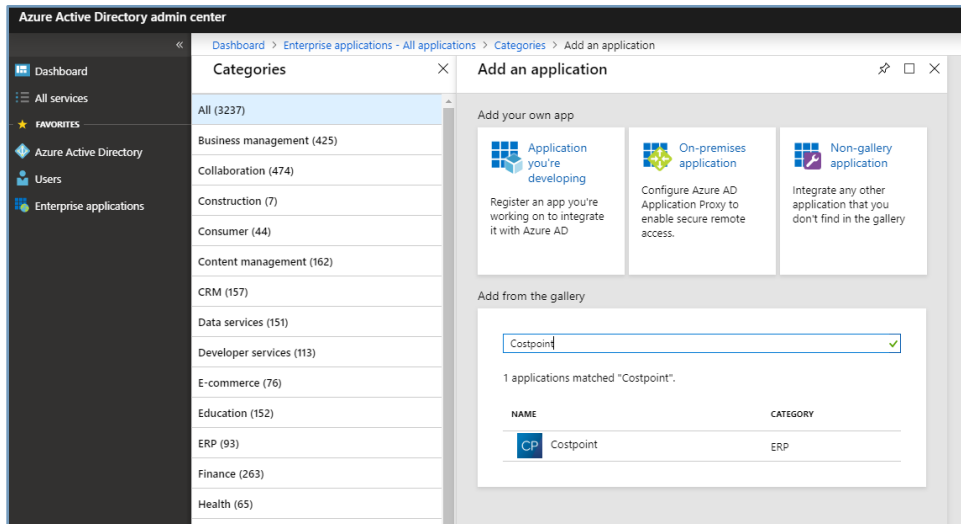


Add and Configure Costpoint into Your Azure Admin Portal

4. To add new application, click **New application**.



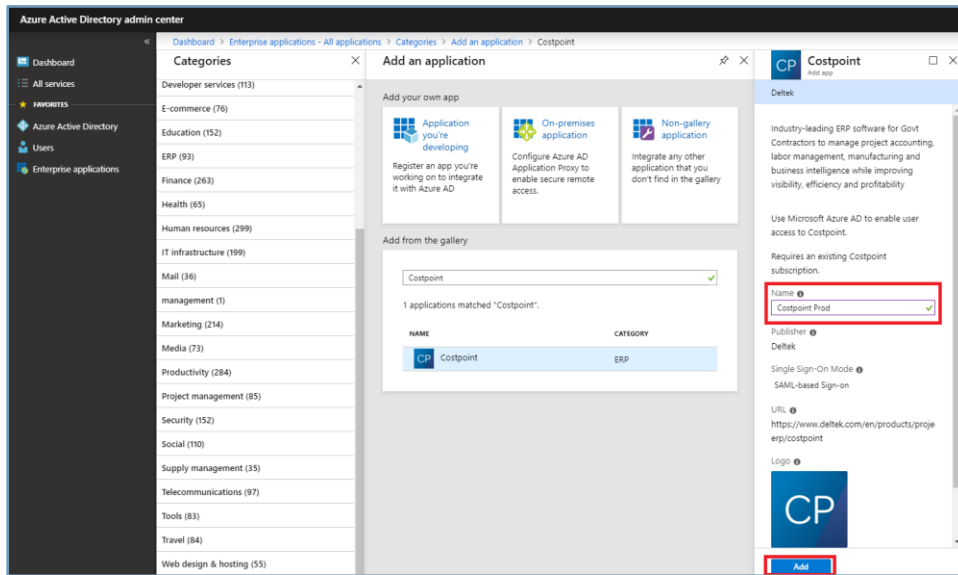
5. In the **Add from the gallery** section, enter **Costpoint** in the search box.



6. Perform the following:
 - a. Select **Costpoint** from results panel.
 - b. Give it a name related to the system you are connecting to that makes sense to you and/or your users.
 - c. Click **Add**.

Wait a few seconds while the application is added to your tenant.

Add and Configure Costpoint into Your Azure Admin Portal

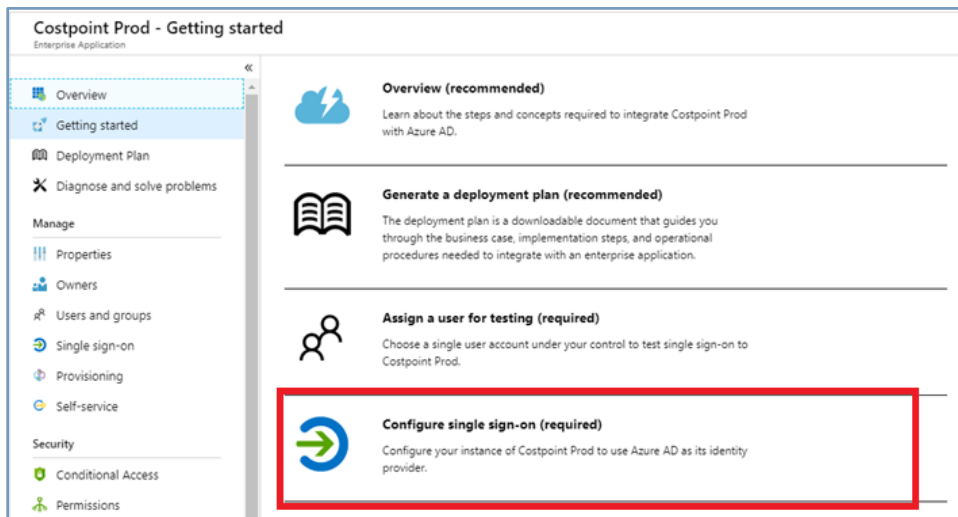


The above example uses **Costpoint Prod** for the application name. You may want to name additional instances **Costpoint Sandbox**, **Costpoint Test**, or use your Costpoint system name where you log in. Anything that will clearly identify the system you are logging into for your users will work. Since the application definition will include that system in the configuration, you will not have the opportunity to specify into which Costpoint system you are logging. When you access the application icon from the portal, you will be logged into that Costpoint system directly.

Note: For Costpoint Mobile T&E users, you must perform this step for each Costpoint Mobile T&E environment that you would like to set up Azure for.

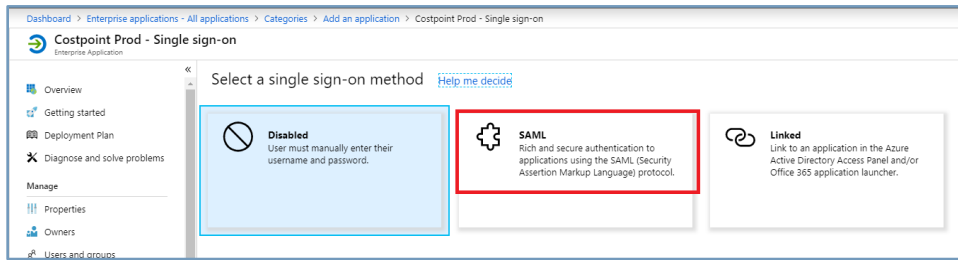
Note: If you already have one Azure setup for Costpoint and you would like to add another one for Costpoint Mobile T&E, you must use a different entity ID for Costpoint Mobile T&E.

- Once added, select **Configure single sign-on**.

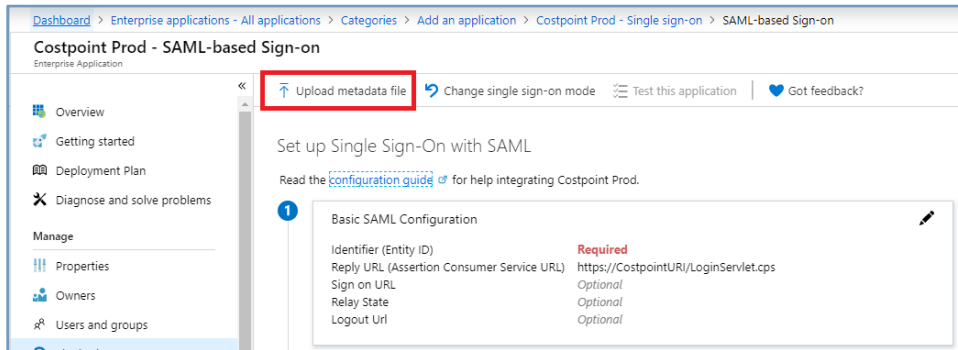


- Select **SAML**.

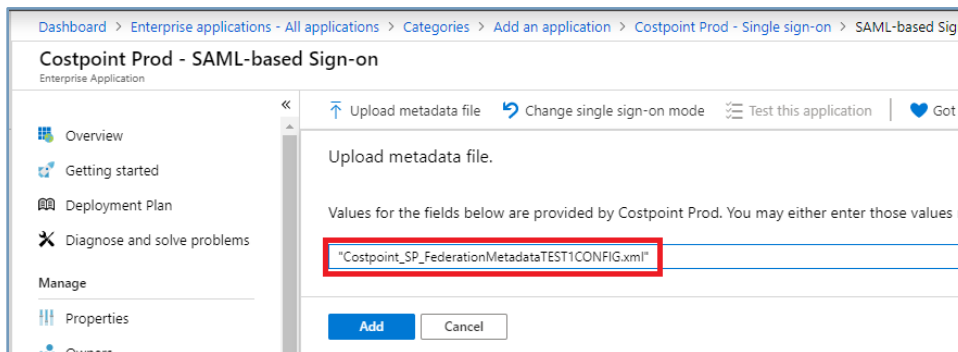
Add and Configure Costpoint into Your Azure Admin Portal



9. Click **Upload metadata file**.



10. Browse to where you downloaded the *.xml files provided to you in the service request case, select the XML file for that specific Costpoint system, and click **Add**.



11. On the Basic SAML configuration screen, the **Identifier** and **Reply URL** fields are automatically populated. Do not edit these values.

12. In the **Relay State** field, enter **system=<COSTPOINT SYSTEM NAME>** and save the record.

This is the Costpoint system name you are logging into (for example, **TEST1CONFIG**).

Warning: These values are case-sensitive. The word **system** MUST be in lowercase, and the Costpoint system name should be in upper case.

Add and Configure Costpoint into Your Azure Admin Portal

13. When prompted to test, click **No, I'll test later** since you have additional steps to complete before it will work.

14. For each application you set up, you need to capture the **App Federation Metadata Url** and send that with the corresponding Costpoint system name.

Deltek needs this information to complete your Azure SSO setup. Add this information to your Service Request ticket as shown in the following example. The x's will be replaced with your specific identifiers. Repeat for each system you are configuring:

```
TEST1CONFIG https://login.microsoftonline.com/xxxxxxx-xxxx-xxxx-xxxx-
xxxxxxxxxxxxx/federationmetadata/2007-06/federationmetadata.xml?appid=xxxxxxxx-
xxxx-xxxx-xxxx-xxxxxxxxxxxxx
```

Add and Configure Costpoint into Your Azure Admin Portal

Dashboard > Enterprise applications > All applications > Costpoint TEST1TEST > Single sign-on > SAML-based Sign-on

Costpoint TEST1TEST - SAML-based Sign-on
Enterprise Application

Overview
Getting started
Deployment Plan
Diagnose and solve problems

Manage
Properties
Owners
Users and groups
Single sign-on
Provisioning
Self-service

Security
Conditional Access
Permissions
Token encryption (Preview)

Activity
Sign-ins
Usage & insights (Preview)
Audit logs
Provisioning logs (Preview)
Access reviews

Upload metadata file Change single sign-on mode Test this application Got feedback?

Set up Single Sign-On with SAML

Read the [configuration guide](#) for help integrating Costpoint TEST1TEST.

- #### Basic SAML Configuration

Identifier (Entity ID)	https://test1-cpt.deltekenterprise.com/cpweb/TEST1TEST
Reply URL (Assertion Consumer Service URL)	https://test1-cpt.deltekenterprise.com/cpweb/LoginServlet.cps
Sign on URL	Optional
Relay State	system=TEST1TEST
Logout Url	Optional
- #### User Attributes & Claims

Givenname	user.givenname
Surname	user.surname
Emailaddress	user.mail
Name	user.userprincipalname
Unique User Identifier	user.userprincipalname
- #### SAML Signing Certificate

Status	Active
Thumbprint	[REDACTED]
Expiration	9/5/2022, 2:45:33 PM
Notification Email	[REDACTED]
App Federation Metadata Url	https://login.microsoftonline.com/[REDACTED]
Certificate (Base64)	Download
Certificate (Raw)	Download
Federation Metadata XML	Download

[Copy to clipboard](#)

- After receiving this information, Deltek will complete the Costpoint backend configuration and send you a confirmation that it has been completed.
- Continue with the next step to set up your users.

Set Up Costpoint User Accounts for Azure

To enable logging into Costpoint with your Azure credentials, you must first modify the authentication properties of your Costpoint user account.

To set up your Costpoint user accounts:

1. Log into your Costpoint systems using a Cloud Active Directory (User Manager) account that has access to the Manage Users application within Costpoint.
2. Navigate to **Admin » Security » System Security » Manage Users** and locate the account to modify.
3. Click the Authentication tab.
4. Perform the following:

- In **Authentication Method**, select **Active Directory**.
- In the **Active Directory or Certificate ID** field, enter the user's Active Directory username in your domain.

This can be the username or the username in UPN format (for example, user@mydomain.local).

- If the user will be using SAML, select the **SAML Single Signon** check box.

The screenshot displays the 'Manage Users' interface in Costpoint. The 'Authentication' tab is active, showing settings for a user with ID 'TESTADFS' and name 'Test ADFS User'. The 'Authentication Method' is set to 'Active Directory'. The 'Active Directory or Certificate ID' field contains 'testadfs'. The 'SAML Single Signon' checkbox is checked. The '2FA Settings' section shows 'None' selected for the authentication method, with 'FIDO Security Key' options for 'Enabled' and 'Passwordless'. The 'Company Access' table at the bottom shows a single entry for 'COMPANY 1'.

Company ID *	Default Taxable Entity ID	Org Security Group ID	Labor	SSN	Cost	Price	Company Name	Org Security Group Name	Taxable Entity Name
1	1						COMPANY 1		(Company name not found)

5. Save the record.
6. Repeat steps 3 through 5 for each user in each Costpoint system with whom you would like to use MS Azure authentication.

Note: Repeat steps 3 through 7 for each user in the Costpoint Mobile T&E system who want to use the Azure authentication.

7. After your Costpoint accounts are set up, go back to Azure Administration and grant permissions to use the application you provisioned earlier, if you have not done so already.



About Deltek

Better software means better projects. Deltek is the leading global provider of enterprise software and information solutions for project-based businesses. More than 23,000 organizations and millions of users in over 80 countries around the world rely on Deltek for superior levels of project intelligence, management and collaboration. Our industry-focused expertise powers project success by helping firms achieve performance that maximizes productivity and revenue. www.deltek.com