




Deltek

# Deltek Cobra® 8.3

Cumulative Update 11 Release Notes

**September 10, 2020**



---

While Deltek has attempted to verify that the information in this document is accurate and complete, some typographical or technical errors may exist. The recipient of this document is solely responsible for all decisions relating to or use of the information provided herein.

The information contained in this publication is effective as of the publication date below and is subject to change without notice.

This publication contains proprietary information that is protected by copyright. All rights are reserved. No part of this document may be reproduced or transmitted in any form or by any means, electronic or mechanical, or translated into another language, without the prior written consent of Deltek, Inc.

This edition published September 2020.

© Deltek, Inc.

Deltek's software is also protected by copyright law and constitutes valuable confidential and proprietary information of Deltek, Inc. and its licensors. The Deltek software, and all related documentation, is provided for use only in accordance with the terms of the license agreement. Unauthorized reproduction or distribution of the program or any portion thereof could result in severe civil or criminal penalties.

All trademarks are the property of their respective owners.

---

# Contents

Overview .....	1
Cobra 8.3 Cumulative Update 11 .....	2
Cobra 8.3 Cumulative Update 10 .....	3
Cobra 8.3 Cumulative Update 09 .....	7
Cobra 8.3 Cumulative Update 08 .....	10
Cobra 8.3 Cumulative Update 07 .....	14
Cobra 8.3 Cumulative Update 06 .....	17
Cobra 8.3 Cumulative Update 05 .....	19
Cobra 8.3 Cumulative Update 04 .....	22
Cobra 8.3 Cumulative Update 03 .....	28
Cobra 8.3 Cumulative Update 02 .....	36
Cobra 8.3 Cumulative Update 01 .....	39
Appendix A: Download and Install the Cumulative Update .....	44
Appendix B: For Additional Information .....	48

## Overview

The Cobra 8.3 Cumulative Update 11 release includes all of the enhancements, software issues resolved, and database changes that were made in Cobra 8.3 CU 01 through CU 11.

## Custom Programs Affected

Sometimes an update can cause custom programs and reports to stop working as expected. Before applying this update, consider whether you have any custom programs or reports in the application area affected by the update. If so, contact Deltek Customer Care at <http://support.deltek.com> before you install the update.

**Attention:** For steps to install the cumulative update, see *Appendix A: Download and Install the Cumulative Update*.

## Viewing the Online Help

If you use Internet Explorer and the online help does not display correctly, you need to turn off Compatibility View for the browser. Click **Tools » Compatibility View settings**, and clear the **Display intranet sites in Compatibility View** check box. Then refresh the browser. Make sure you remove deltek.com (if listed) from the **Websites you have added to Compatibility View** list. You could also elect to use hosted help or the FQDN of your server in the URL (for example, server.domain) to bypass this issue. Depending on your Internet Explorer security settings, you may be prompted to “**Allow blocked content**” when viewing the online help locally. The Cobra 8.3 Help System URL is <https://help.deltek.com/Product/Cobra/8.3/GA>.

Depending on your Internet Explorer security settings, you may be prompted to “**Allow blocked content**” when viewing the Cobra Online Help locally. This only affects Internet Explorer.

You may also access the online help using Chrome and Firefox.

# Cobra 8.3 Cumulative Update 11

**Released:** September 10, 2020

## Enhancements

There are no enhancements in this release.

## Software Issues Resolved

### [File » Integration Wizard – Project Data](#)

#### **Defect 1345266**

**Description:** When you ran the Integration wizard to load forecast or budget data and selected the **Delete Control Accounts and Work Packages no longer in the schedule** option on the Change Control page, Cobra did not delete the work packages that were no longer in the schedule if they had resource assignments with a different class type than that being loaded.

**Customers Impacted:** This defect affects customers who integrate budget or forecast data.

**Workaround Before Fix:** None.

#### **Files Updated:**

- Cobra.WinUI.\*.dll
- Cobra.WinUI.exe
- Cobra.Process.dll

## Database Changes

This section includes changes made to the database. There are no database changes in this release.

## Data Changes

This section includes changes to the data applied by script. There are no data changes in this release.

## Documentation Changes

This section includes details of section changes in the printed documentation. There are no documentation changes in this release.

# Cobra 8.3 Cumulative Update 10

**Released:** August 31, 2020

## Enhancements

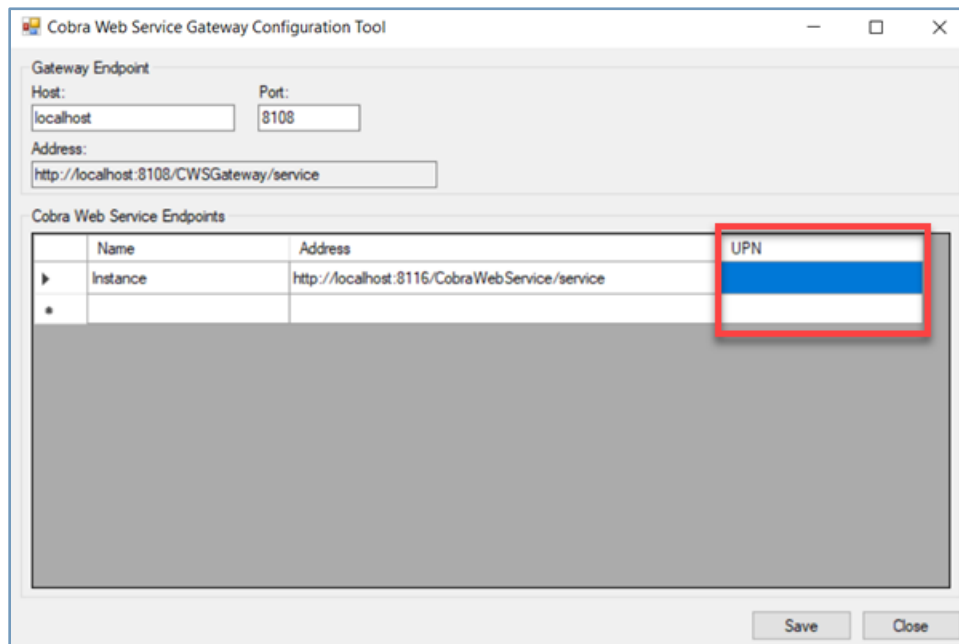
### Remove the Limit Memory Setting During Integration

Previously, you needed to run the **Cobra\_Enable\_LimitMemoryForIntegrationProcess.sql** script to limit the amount of memory consumed by Cobra when running the integration. Beginning Cobra 8.3 CU10, you no longer need to run this script as the Cobra integration has been updated to use the same memory limit applied to other processes.

### Update to the CWS Gateway Configuration Tool

When the Cobra Gateway establishes a connection to the Cobra Web Service (CWS), the CWS usually sends the Service Principal Name (SPN) declared on the machine, known as Identity, to the Cobra Gateway. If the CWS is located on a remote machine which runs on the Windows Domain Account that does not have access to the Service Principal Name (SPN), the CWS sends the User Principal Name (UPN) instead. The Cobra Gateway, which expects the SPN Identity from the CWS receives the UPN Identity instead. This results in the Cobra Gateway rejecting the connection with the error "[The server was unable to process the request due to an internal error.](#)"

Previously, you needed to manually add the UPN values to the **Cobra.WebService.Gateway.Host.exe.config** file in order to resolve the connection issue. Beginning Cobra 8.3 CU10, you can use the [CWS Gateway Configuration Tool](#) to define the UPN of each CWS endpoint. The UPN details are also saved in the **Cobra.WebService.Host.Gateway.exe.config** file upon saving.



**Attention:** This enhancement applies to customers who use the concurrency feature.

## Change the Default Level of Output to Work Package When Exporting a DCDE File

When you run the Cost Data process to generate the Deltek Common Data Exchange (DCDE) file, the **Export data by** option on the Data Options page now defaults to **Work Package** instead of **Control Account**.

**Cost Data**

**Data Options**  
Select the level at which to export and aggregate data.

Export data by: **Work Package**

Export historical data: Time-phased

Aggregate time-phased data by: Element of Cost

☐ Use WBS/OBS combination as Control Account

Detail data contains

- ☒ Direct values
- ☒ Indirect values

Selected burdens are NonAdd

- ☒ Overhead (OH)
- ☒ General and Administrative (G&A)
- ☒ Cost of Money (COM)

Buttons: Help, <Back, Next>, Finish, Cancel

**Note:** The **Export data by** option still defaults to **Control Account** when you generate the Integrated Program Management Data Analysis Report (IPMDAR) file.

## Software Issues Resolved

### File » Integration Wizard – Project Data

#### Defect 1187554

**Description:** When you ran the Integration wizard to load a status file with milestones forecast finish dates and selected the **Change Cobra actual dates to match the schedule option** on the Status page, Cobra did not update the forecast finish dates for in-progress work packages.

**Customers Impacted:** This defect affects customers who use status integration.

**Workaround Before Fix:** None.

#### Files Updated:

- Cobra.WinUI.\*.dll

- Cobra.WinUI.exe
- Cobra.Process.dll

### Defect 1319980

**Description:** When you ran the Integration wizard to load a status file and cleared the **Change Cobra actual dates to match the schedule** option on the Status page, Cobra updated the dates for the completed control accounts and work packages.

**Customers Impacted:** This defect affects customers who use status integration.

**Workaround Before Fix:** None.

#### Files Updated:

- Cobra.WinUI.\*.dll
- Cobra.WinUI.exe
- Cobra.Process.dll

## Project Processes » Replan

### Defect 1193739

**Description:** When you ran the Replan wizard, Cobra added zero time-phased records to the actual and earned classes.

**Customers Impacted:** This defect affects customers who use the Replan wizard.

**Workaround Before Fix:** None.

**Additional Notes:** Defect 1283140 has been fixed along with this defect.

#### Files Updated:

- Cobra.WinUI.\*.dll
- Cobra.WinUI.exe
- Cobra.Process.dll

## Tools » Configure

### Defect 389714

**Description:** When you updated the Budget project terminology on the General tab of the Application Preferences dialog box to a different term and then added a new cost set name called "Budget", you could not rename the Budget project terminology back to "Budget".

**Customers Impacted:** This defect affects all customers.

**Workaround Before Fix:** None.

#### Files Updated:

- Cobra.WinUI.\*.dll
- Cobra.WinUI.exe
- Cobra.Model.dll
- Cobra.Model.LoginManager.dll



- Cobra.Resources.dll

## Database Changes

This section includes changes made to the database. There are no database changes in this release.

## Data Changes

This section includes changes to the data applied by script. There are no data changes in this release.

## Documentation Changes

This section includes details of section changes in the printed documentation.

Document	Details
Cobra 8.3 Installation Guide	<ul style="list-style-type: none"> <li>▪ Removed the “Limit the Cobra Memory Usage during Integration” section.</li> </ul>
Cobra 8.3 Online Help	<ul style="list-style-type: none"> <li>▪ Updated the following topics for the “Update to the CWS Gateway Configuration Tool” enhancement: <ul style="list-style-type: none"> <li>▪ Cobra Web Service Gateway Configuration Tool</li> <li>▪ The server was unable to process the request due to an internal error</li> </ul> </li> <li>▪ Updated the description of <b>Export data by</b> field in the Data Options Page of the Cost Data Wizard topic for the “Change the Default Level of Output to Work Package When Exporting a DCDE File” enhancement.</li> </ul>

## Cobra 8.3 Cumulative Update 09

**Released:** August 19, 2020

### Enhancements

There are no enhancements in this release.

### Software Issues Resolved

#### [API » Web Services](#)

##### **Defect 1333038**

**Description:** When you developed an application to move a work package using the Cobra Web Service, you could not define log comments, change number, and significant values.

**Customers Impacted:** This defect affects customers who use the Cobra Web Service.

**Workaround Before Fix:** None.

##### **Files Updated:**

- Cobra.WebService.dll
- Cobra.WebService.Host.exe
- Cobra.WebService.ClientAPI.dll
- Cobra.Model.dll
- Cobra.Model.WebService.dll

##### **Defect 1337016**

**Description:** When you encountered a login failure, the Cobra Web Service always returned an "Invalid Windows user" error message instead of the actual message.

**Customers Impacted:** This defect affects customers who use the Cobra Web Service.

**Workaround Before Fix:** None.

##### **Files Updated:**

- Cobra.WebService.dll
- Cobra.WebService.Host.exe
- Cobra.Model.dll
- Cobra.Model.LoginManager.dll

#### [File » Integration Wizard – Ancillary Data](#)

##### **Defect 1324987**

**Description:** When you sent a process with multiple jobs to the PM Compass Process server, some jobs in the Cobra queue might display a "Failed" status on the Process Queue Manager form in PM Compass without any corresponding entry in Cobra's process log.

**Customers Impacted:** This defect affects customers who use the **Send to process** option when running a process.

**Workaround Before Fix:** None.

**Additional Notes:** This update resolves a specific cause of "Failed" jobs. Please note that jobs may fail to execute for other reasons.

**Files Updated:**

- CobraWebServices.dll
- Cobra.WinUI.\*.dll
- Cobra.WinUI.exe
- Cobra.Process.dll
- ClrHost.dll
- wwDotNetBridge.dll

## File » Integration Wizard – Project Data

### Defect 1316892

**Description:** When you loaded budget data with exact changes included in the project, Cobra would update the baseline finish dates with the first date of the status date if:

- The **Apply historical budget changes as an adjusting entry in the current status period** option on the Integration Wizard Preferences tab of the Project Properties dialog box was selected.
- The baseline finish date was earlier than the status date.
- The schedule finish date was earlier than the status date.

**Customers Impacted:** This defect affects customers who are integrating budget data.

**Workaround Before Fix:** Clear the **Apply historical budget changes as an adjusting entry in the current status period** option on the Integration Wizard Preferences tab of the Project Properties dialog box.

**Additional Notes:** Defect 1305435 has been fixed along with this defect.

**Files Updated:**

- Cobra.WinUI.\*.dll
- Cobra.WinUI.exe
- Cobra.Process.dll

## Projects » Project View

### Defect 1284720

**Description:** When you clicked **Expand All** on the Edit tab of the Project view and scrolled down in the Time-phased pane using the mouse wheel, the values in the Time-phased pane were updated.

**Customers Impacted:** This defect affects customers who are accessing the Project view.

**Workaround Before Fix:** Use the Page Up and Page Down keys or the scroll bar to scroll up and down in the Time-phased pane.

**Files Updated:**

- Cobra.Model.dll
- Cobra.Model.LoginManager.dll
- Cobra.WinUI.\*.dll
- Cobra.WinUI.exe

## Database Changes

This section includes changes made to the database. There are no database changes in this release.

## Data Changes

This section includes changes to the data applied by script. There are no data changes in this release.

## Documentation Changes

This section includes details of section changes in the printed documentation.

Document	Details
Cobra 8.3 Technical Overview and System Requirements Guide	<ul style="list-style-type: none"> <li>▪ Added the “Concurrency Feature System Requirements” section.</li> <li>▪ Added the “Open Source Software Included with Cobra” section.</li> </ul>
Cobra 8.3 Installation Guide	<ul style="list-style-type: none"> <li>▪ Added the “Concurrency Feature System Requirements” section.</li> </ul>

# Cobra 8.3 Cumulative Update 08

**Released:** July 13, 2020

## Enhancements

### Leveraging PMC's Process Server to Support Running of Concurrent Processes

Cobra leverages the Process server of PM Compass to support concurrency when running the following Cobra processes:

- [Integration of a single import with multiple projects](#)
- [Apportionment calculations on batches of control accounts](#)

**Note:** To use this concurrency feature, you must install Cobra 8.3 Cumulative Update 08, PM Compass 8.1 Cumulative Update 25, and Cobra 8.3 Integration for PM Compass 8.1, at the minimum.

#### Ability to Load an Import File with Multiple Projects Concurrently During Integration

You can load a single import file with data from multiple projects concurrently instead of sequentially when using **Integration » File**. This means if there are 10 projects in the import file, Cobra will load these projects all at the same time.

Cobra creates a single-project integration for each project, and submits that integration job to PM Compass's Process server. PM Compass then distributes each integration job to a Cobra Web Service.

**Attention:** See the [“Multi-Project Concurrency Integration”](#) and the [“Load an Import File with Multiple Projects Concurrently”](#) topics in the Cobra Help System for more details.

#### Ability to Run Apportionment Calculation Concurrently

Cobra leverages the Process server of PM Compass to support concurrency in running apportionment calculations on batches of control accounts. You can implement this feature if the apportionment mapping target is set to **Same as Source** for all control accounts in the apportionment mapping definition.

**Attention:** See the [“Concurrent Apportionment Calculations”](#) and the [“Run Concurrent Apportionment Calculations”](#) topics in the Cobra Help System for more details.

The concurrency feature is available only if you are running Cobra and PM Compass on your environment. Each Cobra Web Service can process 4 jobs concurrently. You may deploy and configure multiple Cobra Web Services to scale the number of concurrent jobs the solution can handle. You may deploy multiple Cobra Web Services on a single machine provided the machine has sufficient resources.

For detailed steps on how to set up your environment to support concurrency, see the following topics in the Cobra Help System:

- [Concurrency in Cobra](#)

- [Implementing Concurrency](#)

## wInsight Export Process Improvement

The wInsight Export performance has improved when running the process against very large projects by:

- Reducing the data that Cobra processes.
- Excluding unnecessary whitespaces before each XML element in the exported file.

## Software Issues Resolved

### File » Integration Wizard – Project Data

#### Defect 1091205

**Description:** When you ran the Integration wizard to import status data, and selected the **Change Cobra actual dates to match the schedule** option on the Status page, Cobra would not integrate the actual dates for the mapped activities if the schedule start dates were empty.

**Customers Impacted:** This defect affects customers who are integrating status data with empty start dates.

**Workaround Before Fix:** None.

#### Files Updated:

- Cobra.WinUI.\*.dll
- Cobra.WinUI.exe
- Cobra.Process.dll

#### Defect 1178071

**Description:** When you ran the Integration wizard to import schedule data, and selected the **Change Cobra actual dates to match the schedule** and the **Allow percent complete reduction** options on the Status page, Cobra would not decrease the percent complete based on the amount in the schedule if milestones had actual finish date.

**Customers Impacted:** This defect affects customers who are integrating schedule data that contains milestones.

**Workaround Before Fix:** Manually update the milestones in Cobra.

#### Files Updated:

- Cobra.WinUI.\*.dll
- Cobra.WinUI.exe
- Cobra.Process.dll

#### Defect 1320158

**Description:** When you ran the Integration wizard to load a single import file with multiple projects, Cobra would use the classes of the first processed project to filter the time-phased tables for all projects in the import file.

**Customers Impacted:** This defect affects customers who are integrating a single import file with multiple projects.

**Workaround Before Fix:** None.

**Files Updated:**

- Cobra.WinUI.\*.dll
- Cobra.WinUI.exe
- Cobra.Process.dll

### Defect 1320110

**Description:** When you ran the Integration wizard to load a single import file with multiple projects, and then selected the **Delete items from Cobra that are no longer in the schedule** option on the Change Control page, and the time-phased data size for the second or subsequent processed projects exceeded the 2 GB limit, Cobra would fail which resulted in a crash.

**Customers Impacted:** This defect affects customers who are integrating a single import file with multiple projects.

**Workaround Before Fix:** Clear the **Delete items from Cobra that are no longer in the schedule** option on the Change Control page of the Integration wizard.

**Files Updated:**

- Cobra.WinUI.\*.dll
- Cobra.WinUI.exe
- Cobra.Process.dll

## Tools » Validity Check

### Defect 1151457

**Description:** When you ran the Validity Check wizard against a project with frozen forecast values prior to the forecast start date, and selected the **Work Package dates correctly span resource assignment dates** option on the Business Validation page, Cobra would check the frozen forecast values instead of ignoring them and would display the “Forecast start date does not span forecast data for Work Package” error message.

**Customers Impacted:** This defect affects customers who run the Validity Check wizard against a project with frozen forecast values prior to the forecast start date.

**Workaround Before Fix:** None.

**Files Updated:**

- Cobra.WinUI.\*.dll
- Cobra.WinUI.exe
- Cobra.Process.dll

## Security-Related Software Issues Resolved

Additional security fixes are included in this release.

## Database Changes

This section includes changes made to the database. There are no database changes in this release.

## Data Changes

This section includes changes to the data applied by script. There are no data changes in this release.

## Documentation Changes

This section includes details of section changes in the printed documentation.

Document	Details
Cobra 8.3 Help System	<ul style="list-style-type: none"> <li>Created/updated the following topics for the “Leveraging PMC’s Process Server to Support Running of Concurrent Processes” enhancement: <ul style="list-style-type: none"> <li>Multi-Project Concurrent Integration</li> <li>Concurrent Apportionment Calculations</li> <li>Concurrency in Cobra</li> <li>Implementing Concurrency</li> </ul> </li> </ul>
Cobra 8.3 Installation Guide	<ul style="list-style-type: none"> <li>Added “Open Source Software Included with Cobra” on page 19.</li> </ul>



# Cobra 8.3 Cumulative Update 07

**Released:** June 2, 2020

## Enhancements

There are no enhancements in this release.

## Software Issues Resolved

### API

#### Defect 1293435

**Description:** When you ran multiple API processes at the same time on a single machine, Cobra would fail and encounter the "sub-directory or file already exists" error.

**Customers Impacted:** This defect affects all users.

**Workaround Before Fix:** None.

**Files Updated:**

- Cobra.WinUI.\*.dll
- Cobra.WinUI.exe
- Cobra.Process.dll

### API » Web Services

#### Defect 1293710

**Description:** When you used the Cobra Web Services Client API and called the GetProjectProperties method to retrieve a large number of projects including their properties, the Cobra Web Service would return the projects and their properties longer than expected.

**Customers Impacted:** This defect affects all users.

**Workaround Before Fix:** None.

**Files Updated:**

- Cobra.WinUI.\*.dll
- Cobra.WinUI.exe
- Cobra.Model.dll
- Cobra.Model.LoginManager.dll

### File » Integration » Project Data

#### Defect 1291388

**Description:** When you ran the Integration wizard to load status file with the **Allow percent complete reduction** option selected on the Status page, Cobra did not allow units complete reduction and ignored the option.

**Customers Impacted:** This defect affects all users.

**Workaround Before Fix:** None.

**Files Updated:**

- Cobra.Process.dll
- Cobra.WinUI.exe
- Cobra.WinUI.\*.dll

**Defect 1293381**

**Description:** When you ran the Integration wizard against a project whose **Apply historical budget changes as an adjusting entry in the current status period** option on the Integration Preferences tab of the Project Preferences dialog box was selected, Cobra would not delete the milestones no longer in the schedule for those with baseline finish date prior to the status date even if the **Delete milestones no longer in the schedule** option on the Change Control page was selected.

**Customers Impacted:** This defect affects all users.

**Workaround Before Fix:** None.

**Files Updated:**

- Cobra.Process.dll
- Cobra.WinUI.exe
- Cobra.WinUI.\*.dll

## [File » Integration wInsight](#)

**Defect 1297252**

**Description:** When you ran the wInsight Export process against a project that included many structures and a large volume of time-phased data, the process would run very slow.

**Customers Impacted:** This defect affects all users.

**Workaround Before Fix:** None.

**Files Updated:**

- Cobra.WinUI.\*.dll
- Cobra.WinUI.exe
- Cobra.Process.dll

**Defect 1276143**

**Description:** When you ran the wInsight wizard and opened an existing configuration for which you had read only access, the **Export file** field on the Save and Run page was disabled.

**Customers Impacted:** This defect affects all users.

**Workaround Before Fix:** None.

**Additional Notes:** This issue is also encountered when you run the Cost Data wizard.

**Files Updated:**

- Cobra.WinUI.\*.dll

- Cobra.WinUI.exe

## Project Processes » Calculate Progress

### Defect 1297267

**Description:** When you ran the Calculate Progress against a large project that contained many work packages with the Calculated Apportionment progress technique, the process would take longer than expected.

**Customers Impacted:** This defect affects users who run Cobra on an Oracle database.

**Workaround Before Fix:** None.

#### Files Updated:

- Cobra.WinUI.\*.dll
- Cobra.WinUI.exe
- Cobra.Process.dll

## Project Processes » Project Audit

### Defect 1276265

**Description:** When you ran a process (for example, Integration) which loaded or updated budget data that resulted in no changes in the time-phased data, and the **Log time phased changes** option on the Log Operation page of the Project Audit wizard was selected, Cobra would create a zero baselog entry.

**Customers Impacted:** This defect affects all users.

**Workaround Before Fix:** None.

#### Files Updated:

- Cobra.WinUI.\*.dll
- Cobra.WinUI.exe
- Cobra.Process.dll

## Database Changes

This section includes changes made to the database. There are no database changes in this release.

## Data Changes

This section includes changes to the data applied by script. There are no data changes in this release.

## Documentation Changes

This section includes details of section changes in the printed documentation. There are no documentation changes in this release.

# Cobra 8.3 Cumulative Update 06

**Released:** April 30, 2020

## Enhancements

There are no enhancements in this release.

## Software Issues Resolved

### [File » Integration Wizard » Project Data](#)

#### **Defect 1286665**

**Description:** When you ran the Integration wizard to load an import file with new or existing control accounts and work packages structures and selected the **Delete Control Accounts and Work Packages no longer in the schedule** option on the Change Control page, Cobra would not run the Update Total process on EAC during integration if you were not loading resource assignments.

**Customers Impacted:** This defect affects all users.

**Workaround Before Fix:** None.

#### **Files Updated:**

- Cobra.WinUI.\*.dll
- Cobra.WinUI.exe
- Cobra.Process.dll

## Security

#### **Defect 1286823**

**Description:** When you ran Cobra in a Terminal Service or Citrix environment and your Cobra session did not close properly, you might encounter orphaned locks or sessions.

**Customers Impacted:** This defect affects users who run Cobra in a Terminal Services or Citrix environment.

**Workaround Before Fix:** Perform one of the following:

- Delete the lock records manually in the database.
- Clear the crashed connection using the EPM Security Administrator tool.
  1. Log into the EPMSA tool.
  2. In the Explorer pane on the left, click **Cobra**.
  3. Click **Tools » Clear Connections**.
  4. On the Clear Connections dialog box, select the crashed connection and click **Clear User**.

**Additional Notes:** This issue may happen when a user leaves their Terminal Service or Citrix session idle and it times out, or when an active user closes their Terminal Service or Citrix window instead of the Cobra window. In some cases, this issue may also happen when Cobra terminates unexpectedly.

**Files Updated:**

- Cobra.Model.dll
- Cobra.Model.LoginManager.dll
- EPM.Security.Authentication.dll

## Tools » Update Totals

**Defect 1284093**

**Description:** When you ran the Integration wizard to load an import file with new or existing control accounts and work packages structures, Cobra would run the Update Total process on budget classes during integration even if you were not loading resource assignments but you selected **Forecast (Start/Finish) Date** on the Import File Field Mapper page.

**Customers Impacted:** This defect affects all users.

**Workaround Before Fix:** None.

**Files Updated:**

- Cobra.WinUI.\*.dll
- Cobra.WinUI.exe
- Cobra.Process.dll

## Database Changes

This section includes changes made to the database. There are no database changes in this release.

## Data Changes

This section includes changes to the data applied by script. There are no data changes in this release.

## Documentation Changes

This section includes details of section changes in the printed documentation. There are no documentation changes in this release.

## Cobra 8.3 Cumulative Update 05

**Released:** April 16, 2020

### Enhancements

There are no enhancements in this release.

### Software Issues Resolved

#### [File » Integration Cost Data Export](#)

##### **Defect 1279430**

**Description:** When you ran the Cost Data wizard against a large project with many Control Account and Work Package code fields with a code field type of **User Field**, and generated the Deltek Cost Data Exchange (DCDE) file or the Integrated Program Management Data Analysis Report (IPMDAR) file, Cobra would crash with a "System.OutOfMemoryException" error.

**Customers Impacted:** This defect affects all users.

**Workaround Before Fix:** None.

##### **Files Updated:**

- Cobra.Model.dll
- Cobra.Model.LoginManager.dll
- Cobra.WinUI.\*.dll
- Cobra.WinUI.exe

#### [File » Integration Wizard – Project Data](#)

##### **Defect 1279341**

**Description:** When you ran the Integration wizard to load control accounts from multiple projects without loading against a master project, Cobra would display a warning message that the control account was locked by another user even though it was not locked.

**Customers Impacted:** This defect affects all users.

**Workaround Before Fix:** None.

**Additional Notes:** This issue was encountered after implementing the Cobra 8.3 CU04 Enhancement: Load an Import File with Data from Multiple Projects and the data lock setting was set to **Control Account**.

##### **Files Updated:**

- Cobra.WinUI.\*.dll
- Cobra.WinUI.exe
- Cobra.Process.dll

### Defect 1279995

**Description:** When you ran the Integration wizard to load records from multiple projects without loading against a master project, the process log would display the total cumulative number of records that were added, updated, and deleted instead of displaying the total number of added, updated, and deleted records for each project separately.

**Customers Impacted:** This defect affects all users.

**Workaround Before Fix:** None.

**Files Updated:**

- Cobra.WinUI.\*.dll
- Cobra.WinUI.exe
- Cobra.Process.dll

### Defect 1280954

**Description:** When you ran the Integration wizard to load code assignments and the data locking was set to control account level, Cobra would update the code values for a control account locked by another user instead of displaying a warning message.

**Customers Impacted:** This defect affects all users.

**Workaround Before Fix:** None.

**Files Updated:**

- Cobra.WinUI.\*.dll
- Cobra.WinUI.exe
- Cobra.Process.dll

### Defect 1282514

**Description:** When you ran the Integration wizard to load resource assignment codes using a single activity and resource assignment file, Cobra would encounter the "[Error] File is in use" error.

**Customers Impacted:** This defect affects all users.

**Workaround Before Fix:** None.

**Additional Notes:** This defect was introduced in Cobra 8.3 CU04 Enhancement: Load an Import File with Data from Multiple Projects.

**Files Updated:**

- Cobra.WinUI.\*.dll
- Cobra.WinUI.exe
- Cobra.Process.dll

## Database Changes

This section includes changes made to the database. There are no database changes in this release.

## Data Changes

This section includes changes to the data applied by script. There are no data changes in this release.

## Documentation Changes

This section includes details of section changes in the printed documentation.

Document	Details
Cobra 8.3 Help System	<ul style="list-style-type: none"> <li>Updated the description of the following options in the <a href="#">Change Control Page of the Integration Wizard</a> topic: <ul style="list-style-type: none"> <li>Delete items from Cobra that are no longer in the schedule</li> <li>Delete Control Accounts and Work Packages no longer in the schedule</li> <li>Delete milestones no longer in the schedule</li> <li>Delete resource assignments no longer in the schedule</li> <li>Delete only resources with the default or selected class</li> <li>Delete only items that match the following criteria <ul style="list-style-type: none"> <li>Deletion Criteria</li> <li>List deleted items in the process log</li> </ul> </li> </ul> </li> </ul>



# Cobra 8.3 Cumulative Update 04

Released: April 06, 2020

## Enhancements

### Load an Import File with Data from Multiple Projects

Cobra allows you to load an import file (status file, activity file, resource assignment file, or a single file with both activity and resource assignment data) which contains data from multiple projects without loading against a master project. With this feature, you do not need to break out an import file for each project and run the Integration wizard separately for each project.

Here is an example of an import file with data from multiple projects.

Project	WBS	OBS	WP	DESCRIPTION	ID	Baseline Start Date	Baseline Finish Date	Forecast Start Date
MULTIPROJECT01	1.1.1.1	1400		Completed CA	1.1.1.11400	6/15/2015	4/16/2016	6/15/2015
MULTIPROJECT01	1.1.1.1	1400	1	Completed WP1	1.1.1.1140001	6/2/2015	8/15/2015	6/2/2015
MULTIPROJECT01	1.1.1.1	1400	2	Completed WP2	1.1.1.1140002	6/2/2015	11/15/2015	6/2/2015
MULTIPROJECT03	1.1.2.1	1600		InProgress CA	1.1.2.116	12/19/2015	3/15/2016	12/19/2015
MULTIPROJECT03	1.1.2.1	1600	1	InProgress WP1	1.1.2.1160001	12/19/2015	3/15/2016	12/19/2015
MULTIPROJECT03	1.1.2.1	1600	2	InProgress WP2	1.1.2.1160002	12/25/2015	5/25/2016	12/25/2015
MULTIPROJECT04	1.1.2.2	1600		Planned CA	1.1.2.216	12/25/2015	4/15/2016	12/25/2015
MULTIPROJECT04	1.1.2.2	1600	1	Planned WP1	1.1.2.2160001	12/25/2015	4/15/2016	12/25/2015
MULTIPROJECT04	1.1.2.2	1600	2	Planned WP2	1.1.2.2160002	12/25/2015	4/25/2016	12/25/2015
MULTIPROJECT05	1.6	1100		New CA	1.611	6/15/2015	4/16/2016	6/15/2015
MULTIPROJECT05	1.6	1100	1	New WP1	1.6110001	6/2/2015	8/15/2015	6/2/2015
MULTIPROJECT05	1.6	1100	2	New WP2	1.6110002	6/2/2015	11/15/2015	6/2/2015

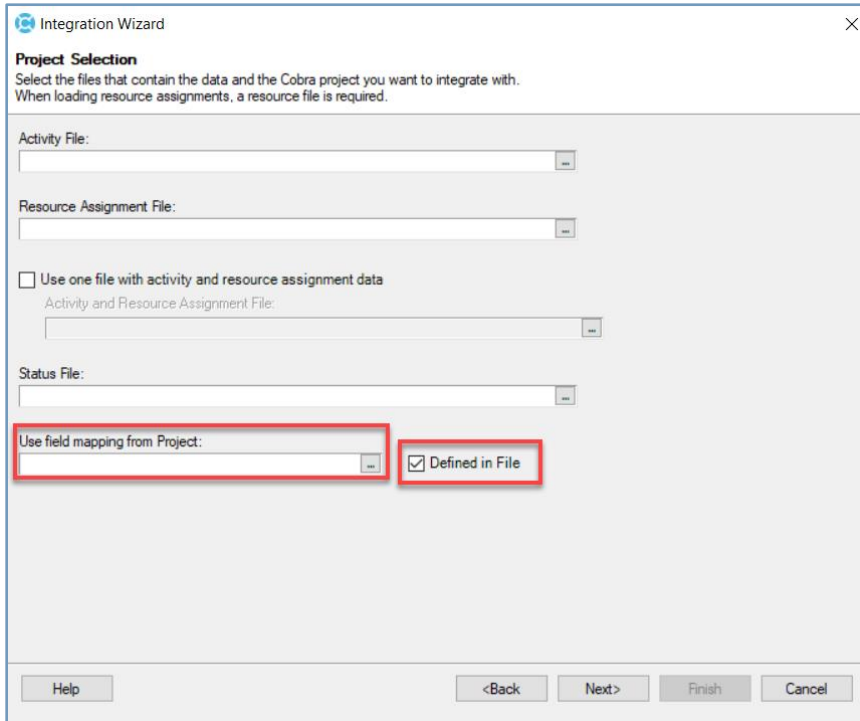
To support this feature, the following changes were made to the Integration wizard when integrating import files.

The **Defined in File** check box is added to the Project Selection page.

This check box displays only when you select any of the following options on the Action Selection page:

- Control Accounts and Work Packages
- Code Assignments and User Fields
- Resource Assignments
- Status

When the **Defined in File** check box is selected, the **Cobra Project** field is changed to the **Use field mapping from Project** field. Cobra uses the specified file to populate the lookup dialog boxes in the wizard and define the number of key fields expected in the field mapper. Otherwise, Cobra displays an error in the log.



Integration Wizard

**Project Selection**

Select the files that contain the data and the Cobra project you want to integrate with.  
When loading resource assignments, a resource file is required.

Activity File:

Resource Assignment File:

☐ Use one file with activity and resource assignment data  
Activity and Resource Assignment File:

Status File:

Use field mapping from Project:  ☒ Defined in File

Help <Back Next> Finish Cancel

**Attention:** See the [Project Selection Page of the Integration Wizard — Files and Import File with Data from Multiple Projects](#) topics in the Cobra Help System.

When you define the fields on the Import File Field Mapper page, make sure to select **Project**.

Integration Wizard

**Import File Field Mapper**

Select a Cobra field at the top of each column that represents the type of data that is contained in the column. Select <Ignore> to prevent a column from being imported.

☒ File contains a header row

1	2	3	4	5	6	7
Project	VBS	OBS	WP	Description	<Ignore>	Baseline Start D
2 MULTIPROJEC	1.1.1.1	1400		Completed CA	1.1.1.11400	6/15/2015
3 MULTIPROJEC	1.1.1.1	1400	01	Completed WP1	1.1.1.1140001	6/2/2015
4 MULTIPROJEC	1.1.1.1	1400	02	Completed WP2	1.1.1.1140002	6/2/2015
5 MULTIPROJEC	1.1.2.1	1600		InProgress CA	1.1.2.116	12/19/2015
6 MULTIPROJEC	1.1.2.1	1600	01	InProgress WP1	1.1.2.1160001	12/19/2015
7 MULTIPROJEC	1.1.2.1	1600	02	InProgress WP2	1.1.2.1160002	12/25/2015
8 MULTIPROJEC	1.1.2.2	1600		Planned CA	1.1.2.216	12/25/2015
9 MULTIPROJEC	1.1.2.2	1600	01	Planned WP1	1.1.2.2160001	12/25/2015
10 MULTIPROJEC	1.1.2.2	1600	02	Planned WP2	1.1.2.2160002	12/25/2015

Help <Back Next> Finish Cancel

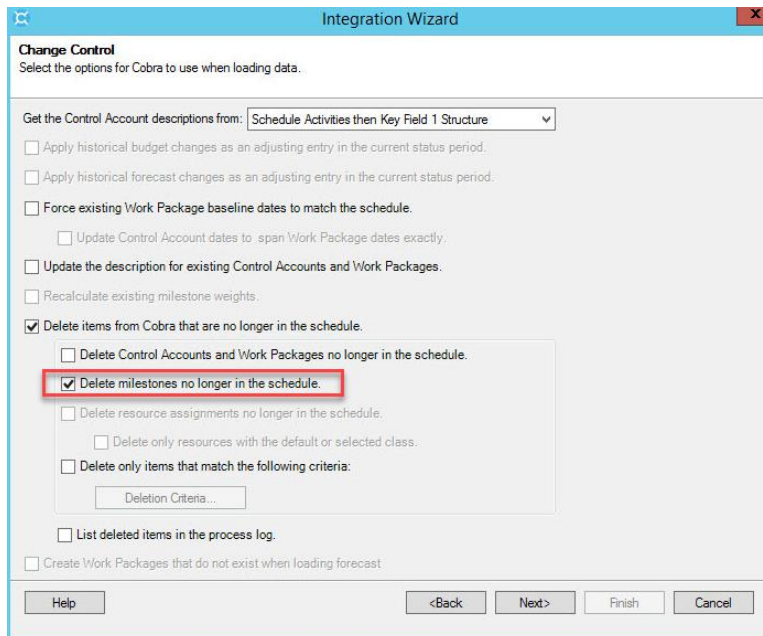
All selections on the other pages of the Integration wizard apply to all projects included in the import file.

**Attention:** See the [Import File Field Mapper Page of the Integration Wizard](#) topic in the Cobra Help System.

You must have access to projects included in the import file. Otherwise, the integration skips the project with an error. Cobra captures the changes for each project separately in a single process log associated with the default project used for mapping. For baseline changes, Cobra captures them with a separate transaction ID in the audit log for each project.

## Delete Milestones that are No Longer in the Schedule

The **Delete milestones no longer in the schedule** check box is added to the Change Control page of the Integration wizard to support deleting of existing milestones no longer found in the schedule.



**Attention:** For more information, see the [Change Control Page of the Integration Wizard](#) topic in the Cobra Help System.

## Software Issues Resolved

### File » Integration Wizard – Project Data

#### Defect 1273099

**Description:** When you ran the Integration wizard and loaded an existing configuration, the Lookup dialog box on the following pages were empty:

- **Load only these budget classes** or **Load only these forecast classes** field on the Resource Assignment page
- **Selection** field on the Filter page

**Customers Impacted:** This defect affects all users.

**Workaround Before Fix:** None.

#### Files Updated:

- Cobra.Process.dll
- Cobra.WinUI.exe
- Cobra.WinUI.\*.dll

#### Defect 1273100

**Description:** When you ran the Integration wizard and loaded a configuration whose **CAM** field was set to **Code (optional)**, Cobra would not update the CAM value during integration.

**Customers Impacted:** This defect affects all users.

**Workaround Before Fix:** Set the CAM field to None before import. Change the value to Optional after import.

**Files Updated:**

- Cobra.WinUI.\*.dll
- Cobra.WinUI.exe
- Cobra.Process.dll

**Defect 1273108**

**Description:** When you ran the Integration wizard and loaded status file with the activity and resource files into a project, Cobra would display the "[Error]Field name not found: 'PROJECT'" error in the log.

**Customers Impacted:** This defect affects all users.

**Workaround Before Fix:** Load only the status file or the activity and resource file only.

**Files Updated:**

- Cobra.WinUI.\*.dll
- Cobra.WinUI.exe
- Cobra.Process.dll

**Defect 1246387**

**Description:** When you ran the Integration wizard and connected to a Primavera database with millions of user defined field value records, the Lookup dialog boxes in the wizard would take a long time to appear.

**Customers Impacted:** This defect affects all users.

**Workaround Before Fix:** None.

**Files Updated:**

- Cobra.WinUI.\*.dll
- Cobra.WinUI.exe
- Cobra.Process.dll

**Defect 1273030**

**Description:** When you ran the Integration wizard to load schedule data from Primavera, the Schedule Field Lookup dialog box on the Schedule Mapping page was empty if there were more than 120 code fields.

**Customers Impacted:** This defect affects all users.

**Workaround Before Fix:** None.

**Files Updated:**

- Cobra.WinUI.\*.dll
- Cobra.WinUI.exe

- Cobra.Process.dll

## Database Changes

This section includes changes made to the database. There are no database changes in this release.

## Data Changes

This section includes changes to the data applied by script. There are no data changes in this release.

## Documentation Changes

This section includes details of section changes in the printed documentation.

Document	Details
Cobra 8.3 Help System	<ul style="list-style-type: none"> <li>▪ Created and updated the following topics for the “Load an Import File with Data from Multiple Projects” enhancement: <ul style="list-style-type: none"> <li>▪ Import File Field Mapper Page of the Integration Wizard</li> <li>▪ Project Selection Page of the Integration Wizard — Files</li> <li>▪ Import File with Data from Multiple Projects</li> </ul> </li> <li>▪ Updated the Change Control Page of the Integration Wizard topic for the “Delete Milestones that are No Longer in the Schedule” enhancement.</li> </ul>

# Cobra 8.3 Cumulative Update 03

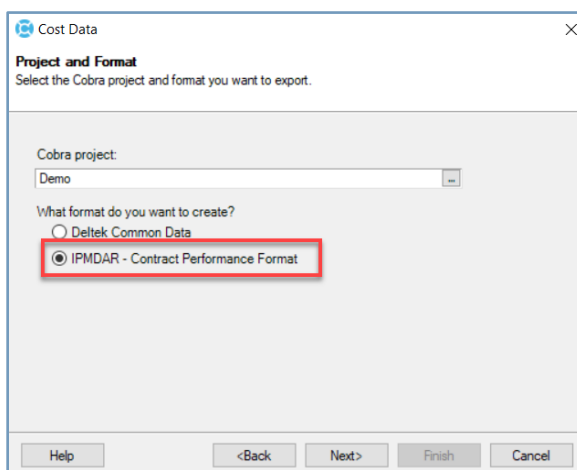
Released: March 31, 2020

## Enhancements

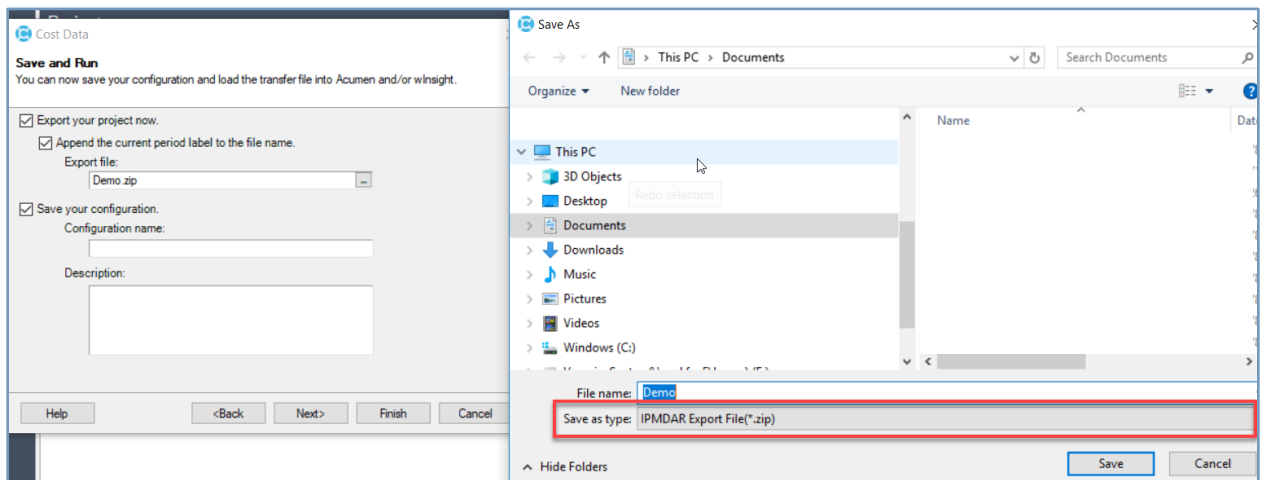
### Renamed the IPMDR Format

The Integrated Program Management Data Analysis Report (IPMDR), a required government contractor-reporting format, is renamed to Integrated Program Management Data Analysis Report or IPMDAR. This revision impacts the following areas of the Cost Data wizard

- **Project and Format page:** The option is updated to **IPMDAR —Contract Performance Format**.



- **Save and Run page:** On the Save As dialog box, IPMDR is renamed to “IPMDAR Export File(\*.zip)” in **Save as type**.



**Attention:** See the [Documentation Changes](#) for the list of updated help topics.

## Support for the Copy baseline dates to forecast dates option of the Reclass Wizard in API and Web Services

The **Copy baseline dates to forecast dates** option on the Date Range page of the Reclass wizard is now supported in the Reclass API process and Web services through the **CopyBaselineDatesToForecastDates** setting. If value is set to **1**, Cobra copies the baseline dates to the forecast dates if the following conditions are met:

- **SourceClass** is set to a Budget class.
- **TargetClass** is set to a Forecast class.
- **Scope** is set to **All**.
- **Criteria** is not set to **Resource Assignment** or **Resource**.

Otherwise, Cobra automatically sets the value to **0**.

**Attention:** See the [Reclass Process](#) topic in the Cobra Help System.

## Software Issues Resolved

### API

#### Defect 1271064

**Description:** When you ran the Reclass process through the API and specified a Control Account Code or Work Package Code in the **Criteria** setting, the Reclass process would fail with the "The method or operation is not implemented" error.

**Customers Impacted:** This defect affects all users.

**Workaround Before Fix:** Run the Reclass process using the Reclass wizard.

#### Files Updated:

- Cobra.Api.exe
- Cobra.Model.LoginManager.dll
- Cobra.Model.dll

### Calendars » Calendar View

#### Defect 1262371

**Description:** When you moved the TODATE and ATCOMPLETE flags for Calendar Set 18 in the Calendar view and selected Yes on "Calendar sets 18 and 19 do not have labels PREVIOUS, TODATE, and ATCOMPLETE on the same periods. Do you want to align 19 with 18?" prompt, Cobra would not align the ATCOMPLETE flag for Calendar Sets 18 and 19.

**Customers Impacted:** This defect affects all users.

**Workaround Before Fix:** Manually update the ATCOMPLETE flag for Calendar Set 19 to match the flag for Calendar Set 18.

#### Files Updated:

- Cobra.Model.dll



- Cobra.Model.LoginManager.dll
- Cobra.WinUI.\*.dll
- Cobra.WinUI.exe

### Defect 1269024

**Description:** When you moved the TODATE flag of a calendar set that was not Calendar Set 18 or 19 and saved the changes in the Calendar view, Cobra would display the prompt to align Calendar Sets 18 and 19.

**Customers Impacted:** This defect affects all users.

**Workaround Before Fix:** None.

**Additional Notes:** Cobra should only display the prompt when you move the TODATE flag for Calendar Set 18 or 19.

#### Files Updated:

- Cobra.Model.dll
- Cobra.Model.LoginManager.dll
- Cobra.WinUI.\*.dll
- Cobra.WinUI.exe

### Defect 1269025

**Description:** When you moved the ATCOMPLETE flag in the Calendar view for Calendar Set 18 or 19 and saved the changes, Cobra did not display the prompt to align Calendar Sets 18 and 19.

**Customers Impacted:** This defect affects all users.

**Workaround Before Fix:** None.

#### Files Updated:

- Cobra.Model.dll
- Cobra.Model.LoginManager.dll
- Cobra.WinUI.\*.dll
- Cobra.WinUI.exe

### Defect 1269683

**Description:** When you moved the PREVIOUS, TODATE, or ATCOMPLETE flags in the Calendar view for Calendar Set 19 and saved the changes, Cobra displayed the following prompt to align the required flags for Calendar Set 19 and 18: "Calendar sets 18 and 19 do not have labels PREVIOUS, TODATE, and ATCOMPLETE on the same periods. Do you want to align 19 with 18?" when it should be aligning Calendar Set 18 with 19.

**Customers Impacted:** This defect affects all users.

**Workaround Before Fix:** None.

**Additional Notes:** When editing either Calendar Set 18 or 19 and moving the PREVIOUS, TODATE, or ATCOMPLETE flags to different a calendar period, Cobra now displays the following prompt: "Calendar

sets 18 and 19 do not have labels PREVIOUS, TODATE, and ATCOMPLETE on the same periods. Calendar sets 18 and 19 do not have labels PREVIOUS, TODATE, and ATCOMPLETE on the same periods. Do you want to align 18 and 19?"

**Files Updated:**

- Cobra.Resources.dll

## Documentation

### Defect 1257985

**Description:** Information about the OLE database drivers used by the backup/restore and export/import features was not documented in the Cobra Installation Guide.

**Customers Impacted:** This defect affects all users.

**Workaround Before Fix:** None.

**Additional Notes:** A note is added to the Software Requirements — Database Driver section of the Cobra Installation Guide.

**Files Updated:**

- DeltekCobra83InstallationGuide.pdf

## File » Integration wInsight

### Defect 970578

**Description:** When you ran the wInsight Export process, Cobra would not export the actuals if:

- The project used 3 control account structures.
- The Code for Control Account level actual costs option was enabled and the costs were captured at the control account level but export structure was exported down to the work package level.
- The project contained several CA entries where CA1 was the same, but CA3 was different (for example: CA1/CA2/CA3: 1.1.1.1/1000/1111, 1.1.1.1/1000/2222).
- The first CA (for example, 1.1.1.1/1000/1111) did not have resource assignments at the control account level but at the work package level (for example: 1.1.1.1/1000/1111 WP01).
- There were actuals at the control account level on any of the other control accounts (for example: 1.1.1.1/1000/2222).

**Customers Impacted:** This defect affects all users.

**Workaround Before Fix:** None.

**Files Updated:**

- Cobra.WinUI.\*.dll
- Cobra.WinUI.exe
- Cobra.Process.dll

## File » Integration Wizard – Project Data

### Defect 1238172

**Description:** When you ran the Integration wizard to load status from Microsoft Project, Cobra would encounter the "Variable 'WORKBAC' is not found" error.

**Customers Impacted:** This defect affects all users.

**Workaround Before Fix:** None.

**Files Updated:**

- Cobra.WinUI.\*.dll
- Cobra.WinUI.exe
- Cobra.Process.dll

#### Defect 1262366

**Description:** When you ran the Integration wizard to load resource assignments from an import file and selected to load forecast dates, Cobra would calculate the EAC total even if the forecast class of the imported records were not part of the EAC cost set.

**Customers Impacted:** This defect affects all users.

**Workaround Before Fix:** None.

**Files Updated:**

- Cobra.WinUI.\*.dll
- Cobra.WinUI.exe
- Cobra.Process.dll

## Project Processes » Calculate Forecast

#### Defect 1256206

**Description:** When you ran the Calculate Forecast process, Cobra incorrectly calculated the forecast if any of the following conditions were met:

- The forecast performance factor level was set to control account or work package.
- The expression of the prior CA/WP (separated by a slash) was not less than or equal to the expression of the CA/WP being processed. For example, "1.1.1.2/1000/ /01" is not less than "1.1.1.2.1/1000/ /02".
- The CA/WP being processed contained earned while the prior CA/WP did not contain earned but contained budget and/or actuals resource assignments.

**Customers Impacted:** This defect affects all users.

**Workaround Before Fix:** None.

**Files Updated:**

- Cobra.WinUI.\*.dll
- Cobra.WinUI.exe
- Cobra.Process.dll

## Project Processes » Replan

#### Defect 1255333

**Description:** When you ran the Replan wizard and selected the **Create a new Work Package for the replanned Budget/Progress/Actuals** option on the Options page, Cobra would not move the baseline budget to the replanned work package.

**Customers Impacted:** This defect affects all users.

**Workaround Before Fix:** None.

**Files Updated:**

- Cobra.WinUI.\*.dll
- Cobra.WinUI.exe
- Cobra.Process.dll

## Reports » Reports

### Defect 1271652

**Description:** When you generated the 1921-1 report, Cobra would create an incorrect formula for the "C.TOTAL" value.

**Customers Impacted:** This defect affects all users.

**Workaround Before Fix:** Edit the 1921-1.xlsx report template and change the formula from {=Cell[R,C-3]+Cell[R,C-2]} to {=Cell[R,C-3]+Cell[R,C-1]}.

**Files Updated:**

- ReportTemplates\1921-1.xlsx

### Defect 1259993

**Description:** When you generated the 1921-1 report and a Functional Data Element only contained "Recurring" costs, Cobra would display the costs in the "NonRecurring" column of the generated report.

**Customers Impacted:** This defect affects all users.

**Workaround Before Fix:** None.

**Files Updated:**

- Cobra.WinUI.\*.dll
- Cobra.WinUI.exe
- Cobra.Model.dll
- Cobra.Model.LoginManager.dll
- Cobra.ReportLayoutEngine.dll

## Tools » Preferences

### Defect 1251389

**Description:** When you selected the **Include SQL Statements** check box for Clientdebuglog.xml on the Data Access tab of the Application Preferences dialog box, saved your changes, and then relaunched Cobra, the option was no longer selected. The same problem occurred if the option was already checked and then you cleared it.

**Customers Impacted:** This defect affects users who run Cobra on a client/server and standalone deployments.

**Workaround Before Fix:** Modify the IdeaBlade.ibconfig file manually to enable the logging of SQL statements. See the [Edit IdeaBlade.ibconfig](#) file help topic for more information.

**Additional Notes:** For standalone or client/server deployment, this option is now saved in the IdeaBlade.ibconfig file used by Cobra. In case Cobra fails to save this option, see the [Troubleshoot Issues with Saving to the IdeaBlade.ibconfig File in Cobra](#) help topic for more information.

For n-tier deployment, the behavior of this option has not changed. The selected option will apply to all clients of the n-tier server until the n-tier server service is restarted.

#### Files Updated:

- Cobra.Model.dll
- Cobra.Model.LoginManager.dll
- Cobra.Resources.dll
- Cobra.WinUI.\*.dll
- Cobra.WinUI.exe
- ConfigManager.dll

## Database Changes

This section includes changes made to the database. There are no database changes in this release.

## Data Changes

This section includes changes to the data applied by script. There are no data changes in this release.

## Documentation Changes

This section includes details of section changes in the printed documentation.

Document	Details
Cobra 8.3 Help System	<ul style="list-style-type: none"> <li>▪ Updated the following help topics for the “Renamed the IPMDR Format” enhancements: <ul style="list-style-type: none"> <li>▪ Cost Data Export</li> <li>▪ Cost Data Wizard</li> <li>▪ Project and Format Page of the Cost Data Wizard</li> <li>▪ Codes and Structures Page of the Cost Data Wizard</li> <li>▪ Data Options Page of the Cost Data Wizard</li> <li>▪ Save and Run Page of the Cost Data Wizard</li> <li>▪ Export Cost Data</li> <li>▪ Exported Cost Data File</li> </ul> </li> </ul>

Document	Details
	<ul style="list-style-type: none"> <li>▪ Display the Cost Data Wizard</li> <li>▪ General Tab of the Project Properties Dialog Box</li> <li>▪ Contract Information Tab of the Project Properties Dialog Box</li> <li>▪ Updated the Reclass Process topic for the “Support for the Copy baseline dates to forecast dates option of the Reclass Wizard in API and Web Services” enhancement.</li> <li>▪ Created the following topics for Defect 1251389: <ul style="list-style-type: none"> <li>▪ Troubleshoot Issues with Saving to the IdeaBlade.ibconfig File in Cobra</li> <li>▪ Clear the Read-only Flag in the IdeaBlade.ibconfig File</li> <li>▪ Run Cobra Using a Different IdeaBlade.ibconfig File</li> </ul> </li> </ul>

# Cobra 8.3 Cumulative Update 02

**Released:** February 28, 2020

## Enhancements

There are no enhancements in this release.

## Software Issues Resolved

### [File » Integration Cost Data Export](#)

#### **Defect 1254685**

**Description:** When you ran the Cost Data Export wizard to generate the Integrated Program Management Data Report (IPMDR) file with the **Detail data contains** options cleared and the **Selected burdens are NonAdd** options selected on the Data Options page, the Summary Performance file of the generated JavaScript Object Notation (JSON) files contained duplicate values.

**Customers Impacted:** This defect affects all users.

**Workaround Before Fix:** None.

#### **Files Updated:**

- Cobra.WinUI.\*.dll
- Cobra.WinUI.exe
- Cobra.Model.dll
- Cobra.Model.LoginManager.dll
- PPM.CostData.dll

### [File » Integration Wizard – Project Data](#)

#### **Defect 1254659**

**Description:** When you ran the Integration wizard to load status data from a master project, Cobra would encounter the "Could not find Control Account" message.

**Customers Impacted:** This defect affects all users.

**Workaround Before Fix:** None.

#### **Files Updated:**

- Cobra.WinUI.\*.dll
- Cobra.WinUI.exe
- Cobra.Process.dll

## Installation

#### **Defect 1241428**

**Description:** The Database Upgrade wizard would always look for the C:\Program Files (x86)\Deltek\Cobra path even if Cobra was installed in an alternate folder other than the C:\ folder.

**Customers Impacted:** This defect affects users who install Cobra on a different drive or path other than the default installation directory.

**Workaround Before Fix:** Copy the Config.dat and DATASOURCES.DAT files to the C:\Program Files (x86)\Deltek\<Cobra path>.

**Additional Notes:** You may also perform any of these workaround:

**Option 1:** Launch the Cobra Database Upgrade wizard using the **/configfolder** parameter.

1. Click **Start » All Programs » Accessories**, right-click the **Command Prompt**, and select **Run as administrator**.
2. On the Administrator Command Prompt window, enter the command using the following syntax: "<Cobra Installation Location>\Support\Utilities\DeltekCobra8xDatabaseUpgradeWizard.exe" /configfolder:<Target folder>

For example: "E:\Program Files (x86)\Deltek\Cobra\Support\Utilities\DeltekCobra83DatabaseUpgradeWizard.exe" /configfolder:E:\Program Files (x86)\Deltek\Cobra

**Note:** Use quotes around the location of the exe.file. Do not use quotes around the target folder. See the ["Run Cobra with Command Line Parameters"](#) topic in the Cobra Help System for more information.

**Option 2:** Add a configuration registry option.

1. Create the following entries in the configuration registry:  
HKEY\_CURRENT\_USER\Software\Deltek\Cobra\8.3
2. Create a ProgramFolder String Value with the value set to the location of the Config.dat or IdeaBlade.lbconfig file; for example: "E:\Program Files (x86)\Deltek\Cobra".

**Files Updated:**

- DeltekCobra83DatabaseUpgradeWizard.exe

## Project Processes

### Defect 1247603

**Description:** When you ran a process and Cobra logged a warning or error message, Cobra would crash instead of displaying the untranslated string ID if the resource ID was not found.

**Customers Impacted:** This defect affects all users.

**Workaround Before Fix:** None.

**Files Updated:**

- Cobra.WinUI.\*.dll
- Cobra.WinUI.exe
- Cobra.Process.dll

## Database Changes

This section includes changes made to the database. There are no database changes in this release.



## **Data Changes**

This section includes changes to the data applied by script. There are no data changes in this release.

## **Documentation Changes**

This section includes details of section changes in the printed documentation. There are no documentation changes in this release.

# Cobra 8.3 Cumulative Update 01

**Released:** January 31, 2020

## Enhancements

There are no enhancements in this release.

## Software Issues Resolved

### [File » Integration Cost Data Export](#)

#### **Defect 1237415**

**Description:** When you ran the Cost Data wizard against a large project to generate the Deltek Costa Data Exchange (DCDE) file, Cobra would crash with a "System.OutOfMemoryException" error.

**Customers Impacted:** This defect affects all users.

**Workaround Before Fix:** None.

#### **Files Updated:**

- Cobra.WinUI.\*.dll
- Cobra.WinUI.exe
- Cobra.Model.dll
- Cobra.Model.LoginManager.dll
- PPM.CostData.dll

### [File » Integration Wizard – Project Data](#)

#### **Defect 1194236**

**Description:** When you initialized a shared database between Open Plan 8.3 and Cobra 8.3 using the Open Plan 8.3 Data Tool, the following error occurred: "Unable to insert data into target table WST\_UPF."

**Customers Impacted:** This defect affects users who use Cobra 8.3 with Open Plan 8.3 on an Oracle or a SQL database.

**Workaround Before Fix:** None.

**Additional Notes:** This defect is tracked in Deltek Open Plan 8.3 Cumulative Update # 04 Defect 1222654.

#### **Files Updated:**

- OpenPlanDataTool.exe
- SQL\Access\OPMaster82.mdb

#### **Defect 1225665**

**Description:** When you initialized a shared database between Open Plan 8.2 and Cobra 8.3 using the Open Plan 8.2 Data Tool, the following error occurred: "Unable to insert data into target table WST\_UPF."

**Customers Impacted:** This defect affects users who use Cobra 8.3 with Open Plan 8.2 on an Oracle or a SQL database.

**Workaround Before Fix:** None.

**Additional Notes:** This defect is tracked in Deltek Open Plan 8.2 Cumulative Update # 13 Defect 1225706.

**Files Updated:**

- OpenPlanDataTool.exe
- SQL\Access\OPMaster82.mdb

### Defect 1225668

**Description:** When you initialized a shared database between Open Plan 8.3 and Cobra 8.3 using the Open Plan 8.3 Data Tool, the following error occurred: "Unable to insert data into target table WST\_DCT."

**Customers Impacted:** This defect affects users who use Cobra 8.3 with Open Plan 8.3 on a SQL database.

**Workaround Before Fix:** Re-initialize the Open Plan Data Tool.

**Additional Notes:** This defect is tracked in Deltek Open Plan 8.3 Cumulative Update # 04 Defect 1222654.

**Files Updated:**

- OpenPlanDataTool.exe
- SQL\Access\OPMaster82.mdb

### Defect 1225670

**Description:** When you initialized a shared database between Open Plan 8.2 and Cobra 8.3 using the Open Plan 8.2 Data Tool, the following error occurred: "Unable to insert data into target table WST\_DCT."

**Customers Impacted:** This defect affects users who use Cobra 8.3 with Open Plan 8.2 on a SQL database.

**Workaround Before Fix:** Re-initialize the Open Plan Data Tool.

**Additional Notes:** This defect is tracked in Deltek Open Plan 8.2 Cumulative Update # 13 Defect 1225706.

**Files Updated:**

- OpenPlanDataTool.exe
- SQL\Access\OPMaster82.mdb

## Help

### Defect 1237371

**Description:** When you accessed the Cobra Help locally, opened the Data Dictionary topic, and clicked the Data Dictionary link, you would encounter the following error: "Cannot find file... Make sure the path or internet address is correct."

**Customers Impacted:** This defect affects all users.

**Workaround Before Fix:** Access the Data Dictionary using the hosted help.

**URL:** <https://help.deltek.com/Product/Cobra/8.3/GA/DataDictionary/index.htm>

**Files Updated:**

- DeltekCobra83.exe

## Projects » Project View

### Defect 1179645

**Description:** When you modified a control account in the project view and then moved to another control account, Cobra would not save the changes automatically if the project audit log was turned on and the log level was set to work package or resource assignment.

**Customers Impacted:** This defect affects all users.

**Workaround Before Fix:** None.

**Additional Notes:** Cobra should save the changes automatically after you modify a control account and move to another one whether the audit log is enabled or disabled at any level.

**Files Updated:**

- Cobra.WinUI.\*.dll
- Cobra.WinUI.exe

## Projects » Calculate Forecast

### Defect 1225384

**Description:** When you ran the Calculate Forecast wizard against a forecast class that did not exist as a resource assignment, Cobra would create the forecast time-phased data but would not create the resource assignment if any of the following conditions applied:

- The class was the last forecast class processed for each control account or work package.
- Closed control account or work packages
- ETC value was 0.
- Forecast method was Manual Forecast (Retain EAC), actual total was not 0, and existing BAC was 0.

**Customers Impacted:** This defect affects all users.

**Workaround Before Fix:** None.

**Files Updated:**

- Cobra.WinUI.\*.dll
- Cobra.WinUI.exe
- Cobra.Process.dll

### Defect 1238441

**Description:** When you ran the Calculate Forecast wizard against a forecast class that used the Percent Complete Ranges forecast method and more than one control account or work package were being

calculated, Cobra would calculate the forecast using the PF=1 method if any of the following conditions applied:

- The performance factor level was set to control account or work package and the length of the CA/WP ID was longer than the ID of the first control account or work package processed.
- The control account or work package percent complete did not match the % complete range of the first control account or work package processed.

**Customers Impacted:** This defect affects all users.

**Workaround Before Fix:** None.

**Files Updated:**

- Cobra.WinUI.exe
- Cobra.Process.dll

### Defect 1237351

**Description:** When you ran the Calculate Forecast wizard, Cobra would fail with the "String ID ID\_COB\_PRC\_CFCST\_MSG88 does not exist" error.

**Customers Impacted:** This defect affects all users.

**Workaround Before Fix:** None:

**Files Updated:**

- Cobra.WinUI.\*.dll
- Cobra.WinUI.exe
- Cobra.Process.dll

## Project Processes » Calculate Progress

### Defect 1228656

**Description:** When you ran the Calculate Progress wizard and set the **Progress by** option on the Options page to **Budget**, the total progress value would exceed the total budget for result(s) if the budgeted result(s) contained significant negative values and/or rate reduction.

**Customers Impacted:** This defect affects all users.

**Workaround Before Fix:** None.

**Additional Notes:** Calculated earned value will be adjusted so that by result, its earned value does not exceed the BAC. For each result, Calculate Progress will total the calculated earned value and subtract that from BAC.

- If the calculated earned value is greater than BAC, Calculate Progress will set earned value to equal BAC.

**Exception:** If the calculated earned value and BAC are both negative, Calculate Progress will use the positive value of both values to compare if Calculated Earned > BAC.

- This will only affect **Progress by method = "Budget"**. The behavior for all of the other Progress by methods (Dollars, Hours SPI, and Time) will not change.
- This will be applied to all Progress techniques except for Level of Effort, as LoE should always equal budget month by month.

With exception to LOE, the following example scenarios show how Calculate Progress will now calculate when a result's earned value exceeds its BAC:

BAC	400	360	-400	-360	400	-400	-1	-400
Previously Calculated Earned	360	400	-360	-400	-360	360	-400	1
New Calculated Earned	360	360	-360	-360	-360	-400	-1	-400

#### Files Updated:

- Cobra.WinUI.\*.dll
- Cobra.WinUI.exe
- Cobra.Process.dll

## Database Changes

This section includes changes made to the database. There are no database changes in this release.

## Data Changes

This section includes changes to the data applied by script. There are no data changes in this release.

## Documentation Changes

This section includes details of section changes in the printed documentation. There are no documentation changes in this release.

# Appendix A: Download and Install the Cumulative Update

## Download the Cumulative Update

1. From Internet Explorer, go to <https://dsm.deltek.com>.
2. Click **Run Deltek Software Manager**.
3. Log in using your Deltek Customer Care Connect credentials.
4. In the left pane of the Deltek Software Manager, expand your Deltek product.
5. Expand the Cumulative Updates folder for your product, and select the update to download.
6. Click **Download** at the bottom of the screen.

## Install the Cumulative Update

Use the instructions below that apply to the Cobra version you use.

**Note:** You must install the entire update package. If an update addresses more than one defect, you cannot fix one defect at a time.

### For Cobra 8.x and Higher

The instructions for installing an update for Cobra 8.x and higher depend on your type of deployment. Use the instructions below that apply to your deployment scenario.

**Note:** You must install the entire update package. If an update addresses more than one defect, you cannot fix one defect at a time.

### If You Use a Deployment Server

#### To install on the server:

1. Verify that Cobra is not running.
2. Launch the update on the server.

**Note:** If the update detects that Cobra is already running, you will see a prompt asking if you want to close Cobra. Choose **Yes** to start the installation or choose **No** to cancel the installation.

3. The Welcome screen displays the current build, along with the new build being installed by the update. Click **Next** to begin the installation.
4. The installation wizard installs all necessary files and displays the Update Complete form.
5. Click **Finish**.

6. Depending on the type of update, a reboot may be required. If the option to reboot your computer is enabled, select it and click **Finish**.
7. Launch the Deltek Cobra shortcut on client workstations to initiate the update.

**To install on a client workstation:**

1. Launch the Deltek Cobra shortcut. Cobra detects that an updated version is available and displays the prompt: **Do you want to install the upgrade?**
2. Choose **Yes** to start the installation or choose **No** to cancel the installation. When the installation is completed, the installation wizard closes.
3. Launch the Deltek Cobra shortcut to log into Cobra.

## If You Have an N-Tier Deployment

**To install on the server:**

1. Verify that Cobra is not running.
2. Launch the update on the server.

**Note:** If the update detects that Cobra is already running, you will see a prompt asking if you want to close Cobra. Choose **Yes** to start the installation or choose **No** to cancel the installation.

3. The Welcome screen displays the current build, along with the new build being installed by the update. Click **Next** to begin the installation.
4. The installation wizard installs all necessary files and displays the Update Complete form.
5. Click **Finish**.
6. Depending on the type of update, a reboot may be required. If the option to reboot your computer is enabled, select it and click **Finish**.
7. Launch the Deltek Cobra shortcut on n-tier client workstations to initiate the update.

**To install on an n-tier client workstation:**

1. Launch the Deltek Cobra shortcut. Cobra detects that an updated version is available and displays the prompt: **Do you want to install the upgrade?**
2. Choose **Yes** to start the installation or choose **No** to cancel the installation. If you choose **Yes**, the installation wizard copies the updated DeltekCobraWorkstation.exe file locally and automatically begins installing files. When the installation is completed, the installation wizard closes.
3. Launch the Deltek Cobra shortcut to log into Cobra.

## If You Have a Terminal Services/Citrix Deployment

**To install on the deployment server:**

1. Verify that Cobra is not running.
2. Launch the update on the server.



**Note:** If the update detects that Cobra is already running, you will see a prompt asking if you want to close Cobra. Choose **Yes** to start the installation or choose **No** to cancel the installation.

3. The Welcome screen displays the current build, along with the new build being installed by the update. Click **Next** to begin the installation.
4. The installation wizard installs all necessary files and displays the Update Complete form.
5. Click **Finish**.
6. Depending on the type of update, a reboot may be required. If the option to reboot your computer is enabled, select it and click **Finish**.
7. Log on as a Local Administrator on the Terminal Server/Application Server and install the update.

**To install on the Terminal Server/ Application Server (the server on which the Cobra client runs):**

1. Log on to the Terminal Server using an account that has Local Administrator privileges. When the setup launches, the installation program installs all necessary files and any registry updates and makes these changes available to all users who will subsequently log on to the Terminal Server session to run Cobra.
2. Ensure that no instance of Cobra is running.
3. Browse to the shared Cobra Workstation folder (usually located on the deployment server, as \\{DeploymentServerName}\CobraWorkstation\DeltekCobraWorkstation.exe).
4. Launch the DeltekCobraWorkstation.exe file to install the update. The Welcome screen displays, showing that the update is available.
5. Click **Next** to start the installation.
6. When the installation completes, launch the Deltek Cobra shortcut to log into Cobra and confirm that the update is installed, meaning that users can now launch Cobra via Terminal Services/Citrix sessions.

## If You Have a Standalone Deployment

**To install on the workstation:**

1. Verify that Cobra is not running.
2. Launch the update on the server.
3. The Welcome screen displays the current build, along with the new build being installed by the update. Click **Next** to begin the installation.
4. The installation wizard installs all necessary files and displays the Update Complete form.
5. Click **Finish**.
6. Depending on the type of update, a reboot may be required. If the option to reboot your computer is enabled, select it and click **Finish**.
7. Launch the Deltek Cobra shortcut to log into Cobra.

## Confirm that the Cumulative Update is Installed

1. Click  » **Help** » **About Deltek Cobra**.

2. Check that the version number reflects the installation of the update.

## Appendix B: For Additional Information

### Deltek Support Center

The Deltek Support Center is a support Web site for Deltek customers who purchase an Ongoing Support Plan (OSP).

The following are some of the many options that the Deltek Support Center provides:

- Search for product documentation, such as release notes, install guides, technical information, online help topics, and white papers
- Ask questions, exchange ideas, and share knowledge with other Deltek customers through the Deltek Support Center Community
- Access Cloud-specific documents and forums
- Download the latest versions of your Deltek products
- Search Deltek's knowledge base
- Submit a support case and check on its progress
- Transfer requested files to a Customer Care analyst
- Subscribe to Deltek communications about your products and services
- Receive alerts of new Deltek releases and hot fixes
- Initiate a Chat to submit a question to a Customer Care analyst online

**Attention:** For more information regarding Deltek Support Center, refer to the online help available from the Web site.

### Access Deltek Support Center

**To access the Deltek Support Center:**

1. Go to <https://deltek.custhelp.com>.
2. Enter your Deltek Support Center **Username** and **Password**.
3. Click **Login**.

**Note:** If you forget your username or password, you can click the **Need Help?** button on the login screen for help.



---

## About Deltek

Better software means better projects. Deltek delivers software and information solutions that enable superior levels of project intelligence, management and collaboration. Our industry-focused expertise makes your projects successful and helps you achieve performance that maximizes productivity and revenue. [www.deltek.com](http://www.deltek.com)