

Deltek Maconomy 2.4.2 BPM Install Guide

July 13, 2018

While Deltek has attempted to verify that the information in this document is accurate and complete, some typographical or technical errors may exist. The recipient of this document is solely responsible for all decisions relating to or use of the information provided herein.

The information contained in this publication is effective as of the publication date below and is subject to change without notice.

This publication contains proprietary information that is protected by copyright. All rights are reserved. No part of this document may be reproduced or transmitted in any form or by any means, electronic or mechanical, or translated into another language, without the prior written consent of Deltek, Inc.

This edition published July 2018.

© Deltek, Inc.

Deltek's software is also protected by copyright law and constitutes valuable confidential and proprietary information of Deltek, Inc. and its licensors. The Deltek software, and all related documentation, is provided for use only in accordance with the terms of the license agreement. Unauthorized reproduction or distribution of the program or any portion thereof could result in severe civil or criminal penalties.

All trademarks are the property of their respective owners.

Contents

BPM Install Overview	1
Introduction	1
Installation Files	2
SAP BusinessObjects	2
Pentaho Data Integrator	2
Reporting Packing Unit (RPU)	2
Licenses	3
Certified Versions	3
New Installation	4
Workflow	4
Enable BPM in Maconomy	4
Enable BPM in People Planner	5
Install SAP BusinessObjects	5
Set up BPM Data Warehouse	7
Install Pentaho Data Integration Tools	7
Set Up Kettle.Properties	8
Prepare the Pentaho Repository	9
Install the ETL	12
Create the Data Warehouse	14
Data Warehouse Maintenance	18
Top-Level Jobs for Maintaining the Data Warehouse	18
Scheduling Loads	18
Install Universes and Documents	20
Importing BIAR File with Promotion Management	20
Setting Universe Connection	22
Set Up BPM Reporting Images	26
Set Up BPM Reporting Dashboard Components	27
Upgrade	28
Workflow	28
Upgrade ETL	28
Before You Begin	28
Upgrade the ETL and BPM Data Warehouse	28
Back Up the ETL	29
Upgrade the ETL and People Planner Data Warehouse	29
Upgrading Universes and Documents	30

Upgrading Customizations	30
Upgrading Custom ETL.....	30
Upgrading Custom Universes	30
Upgrading Custom Documents on Standard Universes	31
Upgrading Custom Documents on Custom Universes	31
Customization	32
Workflow	32
Customizing ETL	32
General Rules	32
Transaction Time Stamps for Customized ETL	33
Customizing Universes	34
Customizing Report Documents.....	35
Customizing a Single Report.....	35
Customizing Multiple Reports	35
Customizing Document Styles	36
Customizing BPM Dashboards.....	38
Editing the JSP Files	38
Other Setup	43
In this section... ..	43
Install the Oracle Instant Client Drivers (Windows)	44
Set Up an ODBC Connection for SQL Server	46
Enable Unicode	49
Increase the Number of WebI Connections	50
Configure CharacterSet Settings if Using Oracle.....	51
User Setup and Single Sign-On	52
Active Desktop and Maconomy Configurations	53
USync.....	53
Configuring a Tenant in a Multitenant Environment (Optional Installation).....	60
Control which Users to Create	63
Error Handling	63
Assign Report and Universe Rights	64
Configure Logon Token in BusinessObjects	66
Increase Available Document Instances	66
Prevent Users from Using Outdated Tokens	66
Localization	67
BPM Translator Tool Overview	67
Perform a Translation.....	67

Handling BusinessObjects Services	73
Remove Performance Manager	74
Use a Non-Standard Web Server Port.....	76
Set Templates for Web Intelligence	77
Enabling Cache and Pre-Load of Cache in ETL	77
Servers with Low Memory (RAM)	80
Burst Publishing.....	82
Materialized Views on Oracle	83
JobEntryJobInvoiceLinePV	83
Troubleshooting	87
Determine BPM Version and Solution.....	87
Problem with Login to Infoview through the Portal.....	87

BPM Install Overview

Introduction

Business Performance Management (BPM) Reporting consists of a collection of universes and standard reports. Universes provide actuals, budget amounts, and dimensions for producing standard reports and ad hoc queries in Business Objects Web Intelligence. All standard reports run on Maconomy's transactional database through one or more universes.

This document provides steps for installing BPM Reporting and setting up Maconomy. This process includes:

- Installing and configuring SAP BusinessObjects.
- Importing universes and reports that are contained in Business Intelligence Archive Resource (BIAR) files.
- Managing users and single sign-on settings.
- Entering the necessary setup data in Maconomy.

This data is required for the universes and reports to work correctly. Detailed explanations of the setup procedures are included in appendices to this document.

For specific requirements for hardware, see the documentation for BusinessObjects, Pentaho, Maconomy, Oracle, and SQL Server.



This document does **not** contain information about hardware, sizing, performance tuning, or maintenance.



Access Control

In BPM Reporting access control applies in the same way as in Maconomy. In BPM Analysis, access control is not applied on dimension tables. The reason is that the analysis universes are used in another way where fact tables are typically involved in queries. When doing so, access control applies in the same way as in Maconomy.

Installation Files

SAP BusinessObjects

SAP BusinessObjects is required for *BPM Reporting*, *BPM Analysis*, and *BPM People Planner*.

Installation files for SAP BusinessObjects (including SAP LiveOffice), are located on the download server:

<\\d\\applications\\Released\\BPM\\Business Objects\\BO BI 4.2\\4.2 SP 3>

Pentaho Data Integrator

Pentaho Data Integrator is required for *BPM Analysis* and *BPM People Planner*.

Installation files for Pentaho Data Integrator, are located on the download server:

<\\d\\applications\\Released\\BPM\\Pentaho\\Pentaho Data Integration\\pdi-6.0.1-GA\\>

Reporting Packing Unit (RPU)

The installation package containing BPM is comprised in a zipped folder called a *Reporting Packing Unit* (RPU).

RPUs are available in zipped format on the DSM under the matching Maconomy version as a sub-product.

An RPU is named after the version and solution it contains. For example,

```
rpu.standard.17.0.103.0
```

The general format of the folder name is:

```
rpu.<solution>.<main version>.<sub version>.<service pack>.<fix pack>
```

The solutions available are:

- Standard
- PSO
- CPA

A packing unit has the following content:

biars	<p>This folder contains a BIAR file for Oracle and one for MS SQL Server:</p> <pre> bpm-oracle.biar bpm-sqlserver.biar peopleplanner-oracle.biar peopleplanner-sqlserver.biar </pre> <p>Furthermore, it contains a file <code>bpmtoc.txt</code> which is a table-of-content file listing the CMS folders, documents and universes the bpm BIAR files contain.</p>
css	<p>This folder contains the file <code>bpmdefault.css</code> which provides WebI document the default BPM style. The file is only</p>

	necessary to install if changes need to be made to the style of documents (see section 0)
dashboards	This folder contains the <code>JSP</code> files and additional files to be installed on the web server in order for BPM Reporting Dashboards to function (see section 0)
dbcheckscripts	This folder contains SQL scripts that can be executed on the Maconomy database in order to check that Maconomy setup supports BPM. The scripts are divided into two sub-folders - one for Oracle and one for MS SQL Server (see Delttek Maconomy BPM Functional Setup Guide for details).
documentation	This folder contains detailed documentation of the BPM universes. The documentation consists of an HTML file for each universe. This HTML file can be viewed in a browser and lists the folders, dimension objects, measure objects, attribute objects, and filters that the universe offers. For each object, a description is provided.
etl	This folder contains XML files for the ETL of BPM Analysis and BPM People Planner, respectively.
performanceviews	This folder contains drop and create scripts for the performance views of BPM Reporting. Furthermore, it contains scripts for installing the flush mechanism of the shared pool. Both performance views and the flush mechanism are installed using MConfig. It also contains drop scripts of the old MV-named performance views. The files in the folder are merely for documentation or relevant if manual installation or deinstallation is needed.

Licenses

SAP BusinessObjects installation and Pentaho Installation require license keys and license files, respectively.

All licenses can be requested by contacting **Delttek Distribution** at HQ-Distribution@deltek.com.

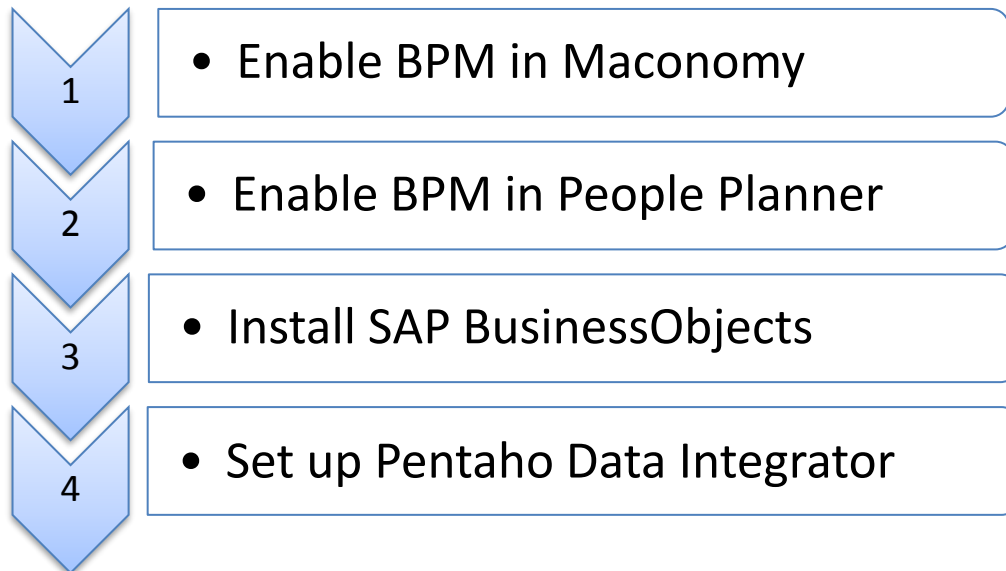
Certified Versions

All certified versions of SAP BusinessObjects, Pentaho, and other BPM related tools and platforms, are stated in the Delttek Maconomy Supported Products document. Specific updates are announced in TechNews.

New Installation

Workflow

This process of new installation is divided into four main steps, described below.



Enable BPM in Maconomy

Enabling BPM in MConfig is required for *BPM Reporting* and *BPM Analysis*.

To prepare the Maconomy database for BPM, enabling is needed. The enabling will install the necessary database views, triggers and indexes that BPM uses, on the Maconomy database.

1. Start MConfig and then select the relevant Maconomy application.
2. On the Application Configuration dialog box, select the relevant shortname, and click **Edit**.
3. On the Shortname Configuration dialog box, enable
 - **Reporting** to prepare for installing BPM Reporting
 - **Business Intelligence** to prepare for installing BPM Analysis.

Enabling **Reporting** will install EX-views and access control views for BPM Reporting. It will also install the necessary performance views and for Oracle databases a flushing mechanism that automatically cleans up in the shared pool. Enabling **Business Intelligence** will install EX-views, apply transaction time stamps and trigger managing the marking of deleted records in Maconomy for certain tables.

4. Set a time for when the flushing mechanism is to run.



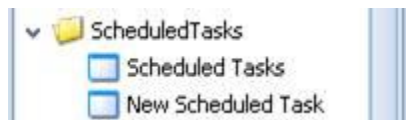
If **BPM Reporting** or **BPM Analysis** is already enabled, but there are problems with the views, disable it, complete the installation change, and then complete the above steps again to reinstall the reporting views, transaction time stamps, and delete triggers.

Enable BPM in People Planner

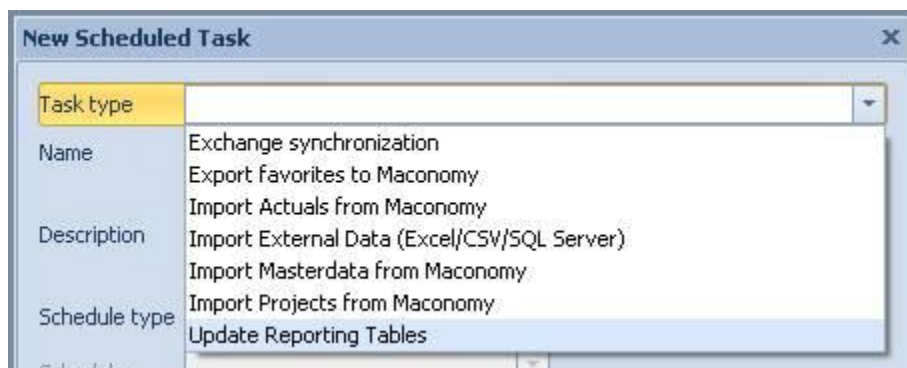
Enabling BPM in People planner is required for *BPM People Planner*.

You have to create a task in PeoplePlanner preparing data for ETL. Follow these steps:

1. Run CreateExternalViewsMSSQL.sql. This will create the required Views.
2. Select New Scheduled Task from the ScheduledTasks node in the Views:



3. Create a scheduled task with type Update Reporting Tables:



4. Set schedule for the Task.
5. Install the PeoplePlannerService (if it is not installed already.)

To refresh the data immediately, you can open the Scheduled Tasks window. There you can see your tasks and you can select the task and press the Execute button.

Install SAP BusinessObjects

SAP BusinessObjects is required for *BPM Reporting*, *BPM Analysis*, and *BPM People Planner*.

Complete the steps of installing SAP BusinessObjects on the reporting server.



See the material at the link below for SAP Business Object tutorials.

<http://scn.sap.com/docs/DOC-7725>



If you have installed SAP BusinessObjects Business Intelligence 4.1 Support Pack 7 or BI 4.2 onward, it is recommended to disable the Enable Memory Analysis feature to improve performance.

If you are using an earlier version on the Windows Platform, enable this feature to prevent a possible crash of the Web Intelligence Processing Server.

Note: Ensure that you have enough RAM and monitor the memory usage of your server. If your server runs out of RAM, it will start to use swap, which may cause performance issues.

If you have limited RAM and you find your server is using swap, keep this feature enabled to ensure maximum performance.

When you upgrade to SAP BusinessObjects 4.2 SP3 Patch 7, you must enable JavaScript content in Web Intelligence to ensure links to the workspace client work.

Enable JavaScript Content

To enable JavaScript content in Web Intelligence, follow these steps:

1. Log in to the Central Management Console (CMC).
2. Go to **Applications » Web Intelligence**.
3. Select the **Enable javascript content into Web Intelligence documents** check box.
4. Click **Save**.

Set up BPM Data Warehouse

Pentaho Data Integrator is required for *BPM Analysis* and *BPM People Planner*. Where names for these two products differ, it is stated.

To set up Pentaho Data Integrator, you must:

- Install Pentaho Data Integration tools
- Set up Kettle.Properties
- Prepare the Pentaho repository
- Install the ETL
- Create the Data Warehouse

Install Pentaho Data Integration Tools

Pentaho is the third-party tool that is used for data integration. You can download Pentaho Data Integration (PDI) from the Deltek download server.



Newer versions of PDI 5.4 do not include e.g. Oracle JDBC JARs nor Orai JAR files. After completing the installation of Pentaho, you must download these files from Oracle and install at:

<installation directory>\Pentaho\design-tools\data-integration\lib

For detailed information on Pentaho Data Integration (formerly known as Kettle), go to <http://community.pentaho.com/projects/data-integration/>. This site contains documentation and other information about the ETL tools Spoon and Kettle, and other related information.

To install Pentaho data integration tools, you must:

- Do all items listed in “Before You Begin”
- Perform Pentaho integration
- Activate the PDI license

Before You Begin

Before you begin the installation of Pentaho, you must do the following:

- Uninstall previous versions of Pentaho.
- Delete the folders .kettle and .Pentaho, typically located on **C:\Users\<username>**.
- Ensure that J2SE Runtime Environment is installed and that the PATH environment variable references the Java SE folder. For 64-bit operating systems, you need to have JRE 32-bit installed.

Perform Pentaho Installation

To install Pentaho, follow these steps:

1. Copy the Pentaho Data Integrator installation file to the desired server.
2. Run the setup file. The Welcome screen displays for the Pentaho Data Integration wizard. Click **Next**.

3. On the License Agreement screen, accept the agreement and click **Next**.
4. Browse to an installation folder, or select the default.
5. Choose a password for the Postgres systems account. Click **Next**.
6. Click **Next** to begin the installation.
7. When the installation is complete, click **Finish**.




The visual Pentaho Data Integrator is called Spoon and is accessible here:

<installation directory>\design-tools\data-integration

This folder also contains the other Pentaho tools, such as **Kitchen** and **Pan**.

Activate PDI License

To activate the PDI License

1. Select Help > License Manager.
2. In the window that appears, click  to install a new license.
3. Browse to the Pentaho License file and click **Open**.

The license is added to the list of licenses in the window. Click **Close**.

The PDI needs two license keys:

- **Pentaho BI Platform Enterprise Edition.lic**
- **Pentaho PDI Enterprise Edition.lic**

Alternatively, run **install_license.bat** from **<Installation directory>\Pentaho\license-installer** in a command prompt or shell. Use each license file as argument as follows:

[install_license.bat install C:\Pentaho\license-installer\Pentaho BI Platform Enterprise Edition.lic](#)

Set Up Kettle.Properties

The **Pentaho Data Integrator** reads a properties files called **kettle.properties**. For *BPM Analysis* and *BPM People Planner*, you must include some parameters in that file. The file is created the first time a Pentaho application is started, if it does not exist already.

By default the Kettle.Properties file is located in:

C:\Users\<username>\.kettle



In Unix/Linux, the **.kettle** folder is placed in the **\$HOME** folder.

If multiple users are to share the properties, we recommend you to make a copy of the file to another commonly accessible folder. Create a new system environment variable **KETTLE_HOME** and assign the path of the file to that variable. After this is done and a Pentaho application is run, the folder **.kettle** is created automatically in the path designated by **KETTLE_HOME**. Make sure to copy the **.kettle.properties** file down into that folder.

To set up Kettle.Properties, you must:

- Set up parameters for BPM
- Test the value is set correctly

Set Up Parameters for BPM

To set up parameters for BPM, follow these steps:

1. Open the kettle.properties in a text editor.
2. If the Maconomy database runs Oracle, add the parameter:

```
MAC_CONNECTION_TYPE=ORACLE
```

If the Maconomy database runs MS SQL Server, add the parameter:

```
MAC_CONNECTION_TYPE=SQL
```

3. If the Data Warehouse runs Oracle, add the parameter:

```
DWH_CONNECTION_TYPE=ORACLE
```

If the Maconomy database runs MS SQL Server, add the parameter:

```
DWH_CONNECTION_TYPE=SQL
```

4. Add the parameter stating whether to run a *full load* or an *incremental load*.

```
FULL_LOAD=YES
```

The FULL_LOAD parameter is not used in the pure standard flows of creating a data warehouse or performing a full or incremental load. These Pentaho jobs set the parameter themselves. But if other jobs are run the parameter may be read.



Pentaho tools read these variables when starting. Whenever a Pentaho tool is open at the moment of resetting the variables, you must restart the tool to use new variable settings.

Test the Value is Set Correctly

To test that the value has been set correctly, run the "*Test FULL_LOAD variable*" transformation. The job is part of the BPM Analysis ETL and will be available after we have installed that in section 0.

Prepare the Pentaho Repository

The Pentaho Data Integration tool requires a repository for the ETL and the creation of the actual data warehouse database.

- The database user PENTAHO_REPOS stores jobs and transformations in Pentaho.
- The database user MACONOMY_DWH stores the BPM Analysis data warehouse.

The repository and the data warehouse database are two individual database users that must be created and have the right access granted. It is possible to have the former on Oracle and the latter on SQL Server, or the other way around, or both on the same. The following section discusses how to create the repository and the data warehouse database users in Oracle and SQL Server, respectively.

To prepare the Pentaho repository, you must:

- Create database users in either Oracle or SQL Server
- Create storage for BPM People Planner

Create Database Users

To create database users in Oracle:

1. From the command prompt, run the following:

```
sqlplus system/manager
```

It may be necessary to specifically connect to the database to be used. If you want to use separate database users for the Pentaho repository and the BPM DWH, you must process the steps related to these two users on separate databases.

2. In sqlplus, enter the following:

```
create user PENTAHO_REPOS identified by PENTAHO_REPOS;
create user MACONOMY_DWH identified by MACONOMY_DWH;
grant connect, resource to PENTAHO_REPOS;
grant dba to MACONOMY_DWH;
grant unlimited tablespace to PENTAHO_REPOS;
```

3. If you do not want to use default database settings for the user's default table space and temporary table space, you can change them with statements such as the following in sqlplus:

```
alter user PENTAHO_REPOS default table space <x1> temporary table space
<y1>;
alter user MACONOMY_DWH default table space <x2> temporary table space
<y2>;
```

where <x1>, <x2>, <y1>, <y2> should be replaced by relevant values.

4. To confirm that the settings work, enter the following:

```
connect PENTAHO_REPOS/ PENTAHO_REPOS;
connect MACONOMY_DWH / MACONOMY_DWH;
```

5. Exit sqlplus.

To create database users in MS SQL Server:

1. Log in to Microsoft SQL Server Management Studio with the user name **sa**.
2. Right-click **Databases** and create the following databases:
 - PENTAHO_REPOS
 - MACONOMY_DWH
3. In the Options tab, set collation to **SQL_Latin1_General_CP1_CS_AS**.

Note: This makes the SQL data warehouse case-sensitive to match with Maconomy database for an accurate comparison of data for the ETL.

4. Expand **Security**, right-click **Logins**, and select **New Login**.
5. Enter the name **PENTAHO_REPOS** for the login.
6. Set **Authentication** to **SQL Server Authentication**.
7. Enter a password (for example, PENTAHO_REPOS).
8. Disable **Enforce Password Policy**.
9. On the left-hand side of the window, click **User Mappings**.
10. On the User Mappings dialog box, map the database to the corresponding user.
11. Specify the role **db_owner**.
12. Click **OK**.
13. Right-click **Logins** and create the user **MACONOMY_DWH**.
14. Set **Authentication** to **SQL Server Authentication**.
15. Disable **Enforce Password Policy**.
16. Enter a password (for example, MACONOMY_DWH).
17. On the User Mappings dialog box, map the database to the corresponding user.
18. Specify the role **db_owner**.
19. To check that the databases work, log out and then log in again with each of the credentials.



The Oracle database for the BPM data warehouse requires a table space called `macindex_dwh`, where indexes for the DWH are created. This table space must be created in addition to the normal table space of `MACONOMY_DWH`.

For more information, see [Build the BPM Data Warehouse](#).

Create Storage for BPM People Planner

Use the steps above to create storage for BPM People Planner. Replace (what) with the user `PEOPLEPLANNER_DWH`.

For BPM People Planner other parameters in the Kettle Properties file are needed:

```
#DWH_CONNECTION_TYPE = ORACLE

DWH_CONNECTION_TYPE = SQL

#PP_CONNECTION_TYPE = ORACLE

PP_CONNECTION_TYPE = SQL

#PP_STAND_ALONE = YES

PP_STAND_ALONE = NO

# How many years old AvailableHours data should be loaded into DWH

PP_ACTUAL_YEAR_RANGE_MIN = 2

# How many years in future since current date

# should be loaded for AvailableHours into DWH

PP_ACTUAL_YEAR_RANGE_MIN = 2
```

The “#” symbol means that all strings following it are comments. By changing its position, you can switch which RDBMS system to use to access the DWH database and which one to use for PeoplePlanner.

Parameter PP_STAND_ALONE defines how PeoplePlanner is used, meaning, is it used in integration with Maconomy system or as a standalone system.



Existing Business Performance Management PeoplePlanner Reporting assumes that PeoplePlanner is used in integration with Maconomy – so, the reports do not work for a standalone solution (in this case you will be able to use the DWH only).

The last two parameters define how many years before and after the current date should be loaded in the DWH.



Remember that for every additional year, a significant number of additional data is loaded. Therefore, use these parameters with care and only include the number of years required to cover the user's business needs.

Install the ETL

The ETL (Extract-Transform-Load) is the mechanism which reads (extracts) data from Maconomy or People Planner, transforms it, and stores it (loads it) in the data warehouse database.

The steps below take origin in a data warehouse on Oracle. If the data warehouse is on MS SQL Server, change the connection type from Oracle to MS SQL Server accordingly.

Furthermore, the steps assume the setup of a data warehouse for BPM Analysis (Maconomy). If a data warehouse is set up for BPM People Planner, import the DataIntegrationRepository.xml from the *peopleplanner* folder in the RPU.


To install the ETL, you must:

- Create the repository connection.

- Import the BPM ETL. The file name is DataIntegrationRepository.xml.
 - Standard ETL is under etl\reporting
 - PeoplePlanner ETL is under etl\peopleplanner

Create the Repository Connection

To create the repository connection, follow these steps:

1. Run **Spoon.bat**.
2. Select **Tools > Repository > Connect...**
3. In the **Repository Connection** window, click  to create a repository.
4. In the **Select the repository type** window, select **Kettle database repository**.
5. In the **Repository information** window, click **New** to create a connection.
6. On the Connection Information dialog box, enter the following details:
 - **Connection Name** — Pentaho repository.
 - **Connection Type** — Oracle or MS SQL Server.
 - **Access Method** — Native (JDBC).
 - **Server Host Name** — <Name of the DWH server running the ETL>.
 - **Database Name** — Maconomy (or perhaps macuni). This is the name of the SID for Oracle databases. For MS SQL, the database name is the Maconomy shortname. For Oracle, the name is SID or Net8ID, as already mentioned.
 - **Port Number** — MS SQL default port is 1433. Oracle default port is 1521.
 - **User Name** — PENTAHO_REPOS
 - **Password** — PENTAHO_REPOS



When using MS SQL Server as database type for the repository, you need to uncheck "Support the Boolean data type" under the Advanced tab. Otherwise, the system throws an error after you click "Create or Upgrade" in step 8.

7. Click **Test**. If the result of the test connection is an error, check for the following issues:
 - The built-in firewall is blocking Java.
 - No listener was set up.
 - No database JDBC drivers are available.

When the test runs successfully, click **OK** to continue.

8. On the Repository Information dialog box, enter the repository the name and description Pentaho repository, and click **Create or Upgrade**.

(In Pentaho 5 and newer, you are able to execute a *dry-run* of the generated SQL that creates the repository. Use this to test whether the creation is to be a success.)

9. Log in with username **admin** and password **admin**.

Import the BPM ETL

To import the BPM ETL, follow these steps:

1. Select **Tools > Repository > Import Repository...**
2. Browse to the location of the *BPM Analysis* or *BPM People Planner* ETL XML file. The file is named *DataIntegrationRepository.xml*.
3. At the prompt "Do you want to apply a set of rules to the import?" select **No**.
4. Select the root as directory (default). Click **OK**.
5. Click **Yes** to create the suggested folders. The transformations and jobs are now imported.
6. Click **Close**.



Pentaho Data Integration 5.4 has a high memory consumption. See the [Servers with Low Memory \(RAM\)](#) for details on disabling Data Integration Server to boost performance.

Create the Data Warehouse


This section describes how to create and load the data warehouse. To prepare for creating the data warehouse, you must set up the connections to the Maconomy/People Planner database and the data warehouse database. Then you must run the ETL job that creates the data warehouse itself. All this is done in Spoon.

To create the data warehouse, you must:

- Set up a connection to Maconomy / People Planner
- Set up the Table Space
- Create the data warehouse

Set Up a Connection to Maconomy / People Planner

To set up a connection to Maconomy / People Planner, follow these steps:

1. Select **Tools > Repository > Explore...**
2. Switch to the **Connections** tab.
3. Select the **Maconomy** connection and click .
4. Fill in the following fields:

Host Name – Enter the name of the Maconomy / People Planner server.

Database Name – Enter the name of the Oracle SID or MS SQL Server database name.

Tablespace for Data – Enter the name of the tablespace if the default is not used.


Tablespace for Indices – Enter the name of the tablespace for indices if the default is not used.

Port Number – Enter the port of Maconomy, typically 1521.

User Name – Enter the name of the Maconomy database user (short name).

Password – Enter the password for accessing the database user.

5. Click **Test** to test the connection. Click **OK**.

6. Select the **DWH** connection and click .

7. Fill in the following fields:

Host Name – Enter the name of the Data warehouse server.

Database Name – Enter the name of the Oracle SID or MS SQL Server database name.

Tablespace for Data – Enter the name of the tablespace if the default is not used.

Tablespace for Indices – Enter the name of the tablespace for indices if the default is not used.

Port Number – Enter the port of Maconomy, typically 1521.

User Name – Enter MACONOMY_DWH

Password – Enter MACONOMY_DWH

8. Click **Test** to test the connection. Click **OK**.

9. Click **Close**.

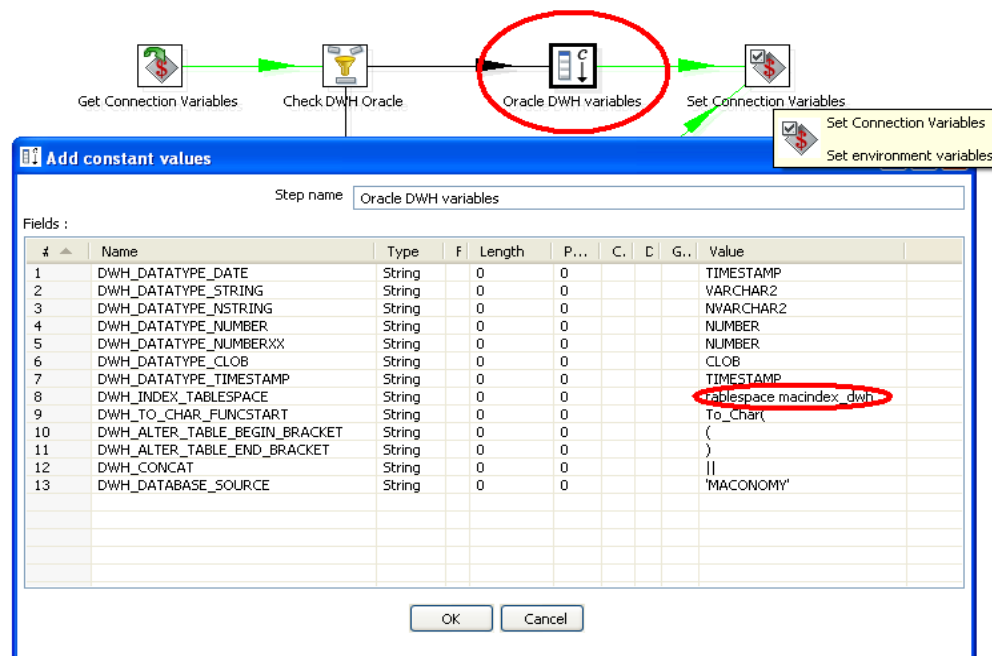
Set Up the Table Space

For BPM People Planner, set up the right table space.

To set up the table space, follow these steps:

1. In this transformation you should edit either do the **Oracle DWH Variables** step or the **Oracle DWH Variables** step (depending upon your DWH connection type) and set the

right tablespace for the constant **DWH_INDEX_TABLESPACE**:



2. Click **OK** and **Save**.

Create the Data Warehouse

Before You Begin

Before you begin this section, note the following:

- Because the **Create** job starts by dropping the full data warehouse, it should **not** be used for upgrading a data warehouse.
- Drop indexes on facts could fail the first time you run this job. If the enhanced reporting views are not in place, the job fails. This may take a long time to finish, depending on the size of the Maconomy database.
- Only run the **Drop** or **DropTablesAndViews** jobs if you really want to remove the full data warehouse completely. Performing a full load does not require running DropTablesAndViews first.

To create the data warehouse, follow these steps:

1. Select **Tools > Repository > Explore**.
2. Double-click the job **Create**.



For *BPM People Planner* the jobs are **PP_CreateTablesAndViews** and **PP_LoadData**.

3. Run this job.



For *BPM People Planner* first run **PP_CreateTablesAndViews** and then **PP_LoadData**. The **PP_DropTablesAndViews** removes the People Planner data warehouse.

The above **Create** job drops the full data warehouse (in case one should already exist), then creates tables and views and performs a full load. This could take some time depending on the size of the Maconomy / People Planner database.

The job initiates by dropping the data warehouse. If this is the first time this is done, errors may occur because the job tries to drop something that does not exist. Ignore these errors.



To verify, open the command prompt, type **sqlplus** **maconomy_dwh/maconomy_dwh**, and then select **table_name** from **user_tables**.



The People Planner reports and universe use data from Maconomy data warehouse and therefore cannot be used when Business Performance Management BI for PP is installed in standalone. The universe for standalone mode has not been implemented at the moment.

Data Warehouse Maintenance

Data warehouse maintenance includes:

- Creating ETL jobs
- Scheduling loads
- Processing manual loads

Top-Level Jobs for Maintaining the Data Warehouse

The following are top-level jobs for maintaining the data warehouse. The first two jobs are for loading data. The third is for upgrading. Once a data warehouse is successfully created, you want to load data regularly, such as once a day or once a week, using Incremental Load. Once a month or so, run Full Load to get any missing dependencies corrected. Run Upgrade when you install service packs or new versions.

Use the following jobs for maintaining the data warehouse once it has been created:

Full Load

This job resets the fact tables and loads all data in again.

Over time the data in incrementally loaded fact tables may become out of sync with some data in their dimension tables for certain scenarios. E.g. a record in a dimension table may change without resulting in corresponding fact records to be adjusted.

Therefore, it is recommended to do a full load - e.g. - once a month.

Incremental Load

This job loads data that have changed, been inserted or deleted. I.e. Once the data warehouse has been created, new or modified data are retrieved by running this job.

It is recommended to schedule this job to run regularly.

Upgrade

This job upgrades the data warehouse.

Scheduling Loads

For periodic updates of the BPM DWH, you must use incremental loads. The Kitchen tool, which is part of Pentaho Data Integration, allows you to launch jobs, such as **Incremental Load**, from the command line.



For more information, see documentation about [Pentaho Data Integrator](#).

The call may be displayed as follows:

```
Kitchen.bat /rep: Pentaho repository /job: "Incremental Load" /dir:/  
/user:admin /pass:admin /level:Basic
```



Periodic updates are accomplished by writing a batch script that launches Kitchen and then schedules the launch of the script.

Start a text editor, such as Notepad, paste the following text, and then save it as updateDWH.bat.

```
@echo off
rem remove '-' from the date
for /F tokens=1-4 delims=- %%i in ('date/t') do set
filedate=%%i%%j%%k
rem remove ':' from the date
for /F tokens=1-4 delims=: %%i in ('time/t') do set
filetime=%%i%%j%%k
rem set the log filename with date and time
set logfilename=C:\Kettle-
2[1].3.0\MyLogFiles\Log_%filedate%_%filetime%.log
call Kitchen.bat /rep: Pentaho repository /job: "Incremental Load"
/dir:/ /user:admin /pass:admin /level:Basic > %logfilename%
echo Load finished. See the logfile %logfilename%
```

To schedule loading of data through a Scheduled Task, follow these steps:

1. Create a folder named **MyLogFiles** in the Kettle folder.
2. Open a command prompt and make the Kettle folder the current directory.
3. To test the script, write **updateDWH.bat**. This may take some time, since the script loads the data warehouse.
4. Open the control panel and then open **Scheduled Tasks**.
5. Click **Add Scheduled Task**, browse to select the script **updateDWH.bat**, and specify how often to perform the task (for example, daily or weekly).
6. Go through the rest of the wizard. You must enter the password of the user for whom the task is scheduled.

Process Manual Loads

To process manual updates of data warehouse, follow these steps:

1. On the repository, start Spoon.
2. Log in as **admin/admin**.
3. Open the **Incremental Load** job.
4. Run the job (**F9**).



The tab **Log view** should display **Success** in the result column. If you cannot open the repository, it may be because a firewall is blocking the access. Deactivate the firewall or consult your network administrator.

Install Universes and Documents

Universes and documents are required for all three products: *BPM Reporting*, *BPM Analysis*, and *BPM People Planner*. The universes and documents for each product are contained in individual BIAR files of the RPU.

The following procedure is the same for the BIARs of *BPM Reporting*, *BPM Analysis*, and *BPM People Planner*.

To install universes and documents, you must:

- Import BIAR files
- Set Universe Connection

Importing BIAR File with Promotion Management

All BPM Analysis universes, reports, and dashboards are enclosed in the BIAR files, which are imported using Promotion Management.

This section shows how Promotion Management can be used to deploy BPM reports on client systems. Promotion Management is a tool that is integrated with the Central Management Console to promote (or move) contents such as reports, universes, and connections to other systems. The source system can be either be another system or a BIAR file. It can be especially useful for structures in which a client uses separate DEV, QA, and Production systems.



There is a similar tool for transferring content called Upgrade Management tool, but it is only available on the server, and its main function is for making BIARs created from previous versions usable on BO 4.1. It must be modified to keep it from checking versions; otherwise, it throws a version check failed (UMT 20012) error.

Features

Server-to-Server

Promotion Management can be used to transfer contents from one server to another. It is similar to Import Wizard of BO XI 3.1, but it is web-based and integrated with the CMC.

LCMBIAR-to-Server (and Vice Versa)

Both LCMBIAR and BIAR files can be imported to the CMS repository via Promotion Management, but only an LCMBIAR can be exported from the CMS. You can do this via the command line.

Overrides

Overrides enable the automatic update of connection when contents are transferred from another server or BIAR.

Rollback

You can restore a part of or the whole promoted content on the repository to its previous state. Note that this is only applicable if the source is another system and NOT a BIAR.

Scheduling

You can schedule when content will move to another system.

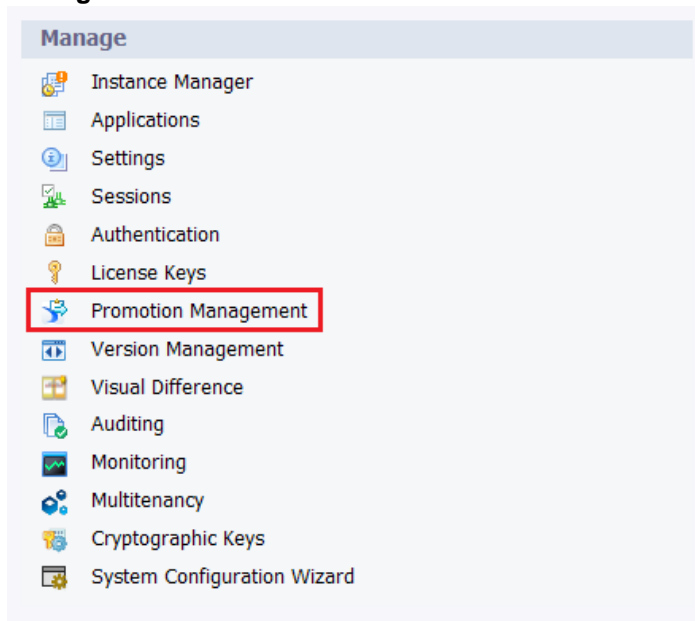
LCM CLI

This command-line interface can be used to run Promotion Management features without the need to access CMC. This section shows the steps for how to import and export an LCMBIAR using the LCM CLI tool.

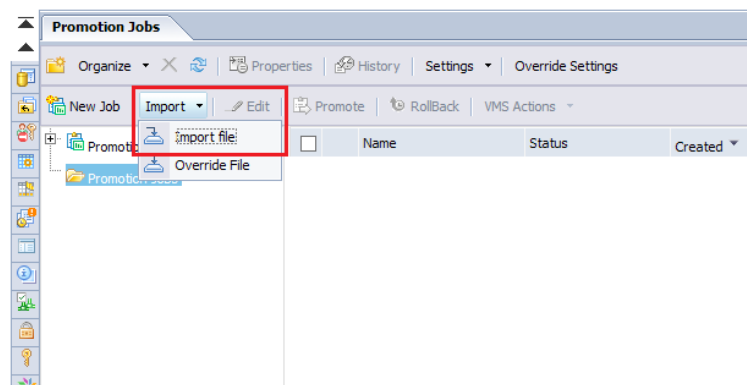
Implementation

To do a BIAR-to-server promotion:

1. Log in to the Central Management Console at <https://<server>:<port>/BOE/CMC>.
2. On the CMC homepage, find the Manage island at the right side and click **Promotion Management**.



3. Click the Import drop-down and select **Import file**.



4. The Import from file window appears. Select **File System**, then click **Browse**.
5. Select the BIAR or LCMBIAR, then click **Open**.
6. The text beside the "Browse..." button is updated with the location and file name of the BIAR. Click **OK** to create the new job.



A password can be set for LCMBIAR. Importing a password-protected LCMBIAR displays another window that allows a user to input the password.

7. A new job with the Source set as “From File” is automatically created. Update the Name and Destination of the new job and click **Create**.

Fields marked with an asterisk (*) are mandatory fields

Name*: BIAR_promotion

Description:

Keywords:

Save Job in*: Promotion Jobs

Source : From File

Destination :

Create Cancel

8. All objects from the BIAR are pre-selected, including all dependencies. Click **Promote** to display a new window that contains the Summary, Security Settings, and Test Promote.
 - **Select Security Settings** — Specify whether there are any rights that must be included for the objects to be promoted.
 - **Select Test Promote** — Select this option to check whether there are any errors in the promotion before you click **Promote** again in Step 8 and commit to the changes.
9. Click **Promote** to start the transfer, or **Schedule** to have the promotion run at a later date (or a recurring schedule, depending on the need).

Setting Universe Connection

After you import the BIAR file, universes and connections are stored in the CMS. To set database connection on the universes, you must create a project and a relational connection, retrieve universe files, assign a connection, and publish the universes.

This is all done in **Information Design Tool**. In **Information Design Tool**, a session to the CMS is required for certain operations. For information about sessions, as well as for more information and guides about creating projects, connections, and handling universe files, see documentation and tutorials on **Information Design Tool**.



See SAP for details about Information Design Tool:

<http://scn.sap.com/docs/DOC-8461>

To set a universe connection, you must:

- Create a project

- Create a relational connection
- Retrieve the universe files
- Set universe connections and publish

Create a Project

To create a project (skip this if a project is available already):

1. Select **File » New » Project**.
2. Enter a name for the project.
3. Select a Project Location.

This is the folder where universe and connection files are stored in the project. By default, a folder under the user's profile is chosen. If other universe developers are to access the files, it is recommended that you select another folder (not under the user profile).

Create a Relational Connection

To create a relational connection (skip this if a connection is available already):

1. Select **File » New » Relational Connection**.
2. In the Resource Name window, enter a name for the connection. Click **Next**.
3. In the Database Middleware Driver Selection window, choose a database type.
BPM supports Oracle and MS SQL Server connections.
For BPM Reporting, you must choose the database type of the Maconomy database.
For BPM Analysis and BPM People Planner, you must choose the database type of the BPM Data Warehouse or People Planner Data Warehouse database, respectively.
4. In the Parameters window, enter the name of the database user, password, reference to TNS, service/database, port number, and SID/database. The parameters required depend on whether an Oracle or MS SQL Server connection is chosen, as well as whether a Client, ODBC, or JDBC connection is selected. Click **Next**.
5. Choose default settings for the next Parameters screen.
6. To speed up query performance, set up an ALL-ROWS hint and enable Cursor Sharing.



Enabling Cursor Sharing

On many installations, performance can be improved by applying Cursor Sharing. However, on some systems, enabling this can have the opposite effect and reduce performance.

Applying Cursor Sharing relies on the current performance of the user's system. If the system currently has performance issues while Cursor Sharing is disabled, enable it to help improve performance. If the system has performance issues while Cursor Sharing enabled, disabling this may improve performance.

- a. To set up an ALL_ROWS hint, enter the following value for the custom property Hint:

`/*+ ALL_ROWS */`
- b. To set up cursor sharing on Oracle connections, enter the following value for the custom property ConnectInit:

ALTER SESSION SET CURSOR_SHARING = FORCE

- c. To set up cursor sharing on MS SQL Server connections, enter the following value for the custom property ConnectInit:

FORCE PARAMETERIZATION

7. Click **Finish**. A new connection file (type cnx) is added to the project.
A cnx connection is a local connection and can be used for publishing universes locally on disk. However, it is recommended that you publish universes on the CMS. This requires a secure connection.
8. To create a secure connection of the new connection file, right-click the cnx file and choose Publish Connection to a Repository.
9. In the window that appears, browse for the CMS location in which the connection is to be stored. For example, select the default Connections folder of the CMS. Click **Finish**.
10. A question window appears. Click **Yes** to retrieve a shortcut file to the secure connection. A secure connection file (type cns) is added to the project.



ALL_ROWS Information

By default, the Maconomy database is set to retrieve a small number of records at a time for each query. This is convenient when entering and working in Maconomy workspaces or dialogs where you typically only see 10, 50, or 100 records at a time. However, when reporting, it is beneficial to retrieve all records at once, because a report document or dashboard is not refreshed until all records are retrieved.

Cursor Sharing Information

Often the reports that are run have the same query outline. Oracle and SQL Server can use this by saving a template of the queries that are executed. In many cases, this means that even if restrictions are changed (and the queries thereby differ), the database can skip the analysis of how to execute the queries, such as the creation of the explain plan. For many reports, the creation of the explain plan takes most of the time, so there is significant value in being able to reuse query templates.

Retrieve the Universe Files

To retrieve the universe files, follow these steps:


1. Make sure the project is selected in the Local Projects view.
2. Select **File » Retrieve a Published Universe » From a Repository...**
3. In the window that appears, browse to the location of the universes.
If the universe is an old BO 3.1 universe, it has no extension; otherwise, it has a **unx** extension.
Retrieving a universe of type **unv** migrates the universe to the new BI 4 **unx** format.
If a BO 3.1 universe should be kept in the BO 3.1 **unv** format, set connection with the Universe Designer tool instead.
4. Select **Save for All Users**. Click **OK**.
The Universe files (**blx** and **dfx**) are retrieved to a **timestamp** named folder under the project folder selected.



If needed, the universe files can be moved to another folder (for example, out of the **timestamp** named folder). However, this may break the local dependency that the **blx** file has to the **dfx** file and the local dependency that the **dfx** file has to the **cnx/cns** file. If this happens, open the **dfx** file and choose the connection again and possibly make some other minor change to force Information Design Tool to mark the **dfx** file as changed. Then save the file. Then open the **blx** file and choose **Change Data Foundation**. Here select the **dfx** file and possibly make some other small change to force Information Design Tool to mark the **blx** file as changed. Then save the file.

Set Universe Connections and Publish

To set universe connections and publish, follow these steps:

1. Open the **dfx** file of a universe.
2. Click the **Connections** tab.
3. Click **Change Connection...** .
4. Select the connection file (for example, the newly created **cns** connection shortcut file). Click **Finish**.
5. Save the **dfx** file.
6. Right-click the **blx** file and choose **Publish » To a Repository**.
7. Optionally, mark areas for checking integrity. Click **Next**.
8. Browse to the CMS folder in which the universe is to be published. Click **Finish**.
The universe has now been published with the selected database connection.
9. Continue this process for all universes needed.

Set Up BPM Reporting Images

To set up BPM Reporting Images, you must copy the files from the images folder of the Reporting Packing Unit (RPU) and paste them in the destination folder for graphical images in SAP BusinessObjects.

To copy and paste the image:

1. Go to images folder of the Reporting Packing Unit (RPU) and copy the image files.
2. Go to the destination folder for graphical images in SAP BusinessObjects, and paste the image files in this folder.

For example:

C:\Program Files (x86)\SAP BusinessObjects\SAP BusinessObjects Enterprise XI
4.0\images

Set Up BPM Reporting Dashboard Components

This setup is required for BPM Reporting Dashboard Components only.

BPM Dashboard Components allows you to view different dashboard components in a window tab.

To properly view the Company Performance, Customer Performance, and Job Performance workspaces in the Workspace Client, copy the **BPMDashboards.war** file from the download server to the local machine.

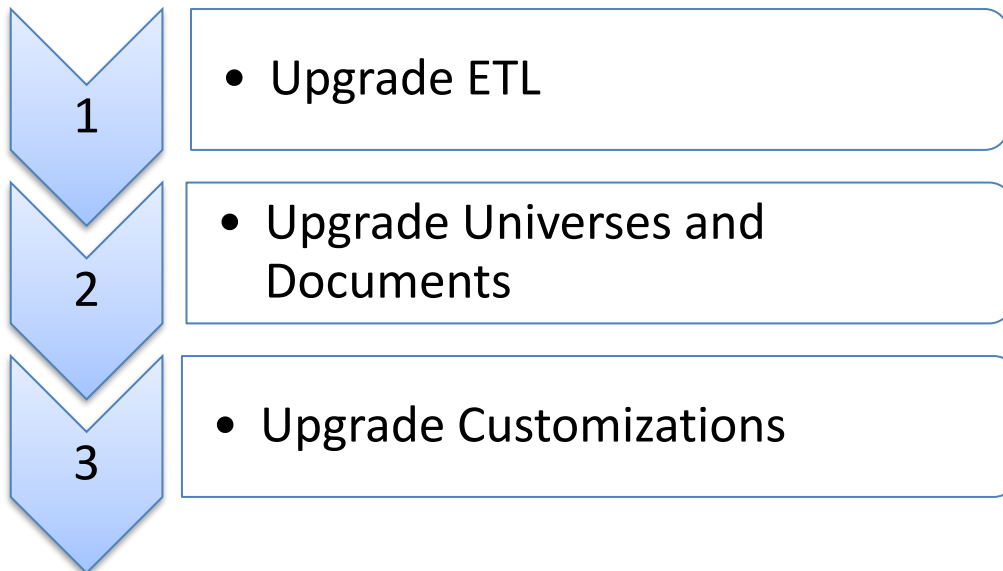
To copy and prepare the Dashboard Component iFrames, follow these steps:

1. Copy the **BPMDashboards.war** file from the download server and place in an appropriate location on the local machine.
2. Navigate to `C:\Business Objects\Tomcat7\conf` and update **tomcat-users.xml**
3. Insert the following lines between the above `</tomcat-users>` end tag. This creates the user **admin** that has the role for **manager-gui**:
 - a. `<role rolename="manager-gui"/>`
 - b. `<user username="admin" password="admin" roles="manager-gui"/>`
4. Navigate to the <http://<servername>:8080/> Tomcat interface.
5. Click on the **manager webapp** link and use the credentials that you created for **admin**.
6. In the **Deploy directory or WAR file located on the server** section, deploy the **BPMDashboards.war** and complete the following:
 - Context Path (required) — (Starts with a backslash (/) and is concatenated with the war file name, for example, /BPMDashboards).
 - WAR or Directory URL — (Complete URL of the WAR file to be deployed, including the name of the war file, for example, C:\temp\BPMDashboards.war).
7. Click **Deploy**.
8. Once the webapp is deployed, check whether the web app is started. If not, start the web app.

Upgrade

Workflow

This process of upgrading is divided into three main steps, described in the following.



Upgrade ETL

Upgrading the ETL is required for upgrading *BPM Analysis* and *BPM People Planner*.

To upgrade the ETL you must:

- Upgrade the ETL and BPM Data Warehouse
- Upgrade the ETL and People Planner Data Warehouse

Before You Begin

Before upgrading, it is recommended that you make a [backup of the ETL](#) and a backup of the data warehouse database.



Since there are many methods to back up a data warehouse database, and methods differ for Oracle and MS SQL, consult your Database Administrators for this task.

Upgrade the ETL and BPM Data Warehouse

To upgrade the ETL and BPM Data Warehouse, follow these steps:

1. Install the ETL of the new RPU.
2. Run the ETL job **Upgrade**.

The Upgrade job truncates the fact tables, upgrades the database schema of the data warehouse, and performs a full load. Dimension tables remain unchanged and keep the history of dimensions.

Back Up the ETL

To back up the ETL, follow these steps:

1. Run **Spoon.bat**.
2. Select **Tools » Repository » Connect...**
3. In the **Repository Connection** window, select the repository that contains the ETL to back up.
4. Select **Tools » Repository » Export Repository...**
5. Choose a location and a file name for the XML file to be created.
6. Click **Save**.

Upgrade the ETL and People Planner Data Warehouse

To upgrade the ETL and People Planner Data Warehouse, install the ETL of the new RPU.

Upgrading Universes and Documents

Upgrading universes and documents is required for upgrading *BPM Reporting*, *BPM Analysis*, and *BPM People Planner*.

Upgrading is done by installing the respective BIARs from the new RPU. Before installing, make a backup of the CMS, for example, a shape of a BIAR export using Promotion Management.

Upgrading Customizations

Customizations are the responsibilities of the consultant who applies them. There is no automatic resolving mechanism that safely upgrades BPM without the risk of overwriting customizations or that automatically makes customized BPM components adjust to upgraded BPM components.

However, there are several precautions that you can take when customizing BPM that help to protect the customizations from being overwritten when upgrading.

The following outline the procedures for upgrading customizations, which include:

- Upgrading custom ETL
- Upgrading custom universes
- Upgrading Custom Documents on Standard Universes
- Upgrading Custom Documents on Custom Universes

Upgrading Custom ETL

Customized ETL is typically create as separate ETL pieces—that is, separate jobs and tasks that are called from the standard ETL. When a new standard ETL is installed, any modifications to it are overwritten, including the places that called the custom ETL. This [link](#) to the custom ETL then must be reestablished. The custom ETL itself should have facilities for upgrading to new database schemas of tables, and so on.

Upgrading Custom Universes

Customized universes are typically created in one of two ways:

- **Copied** — A copy of a standard universe. In this case, upgrading is not needed except for running refresh structure on the custom universe to update it to fit the present Maconomy database.
- **Linked** — A universe linking to a standard universe. In this case, there should be no need for doing modifications to the custom universe.

There are exceptions, namely if deprecated elements have been removed from the standard universe or that universe has undergone substantial changes, as happens on occasion.

Also, the custom universe may have introduced tables, objects, and so on, which are also introduced in the new standard universe. Therefore, it is always a good idea to inspect the link from the custom universe to the standard universe and make sure it is intact.

Upgrading Custom Documents on Standard Universes

Custom documents running on standard universes typically work without any changes.

If the principles for customization have been followed, installing a new standard package does not overwrite custom documents.

However, as standard universes from time to time may undergo some changes or fixes, or because deprecated elements may be removed from universes, it is always recommended to test run custom documents and inspect for any issues.

Upgrading Custom Documents on Custom Universes

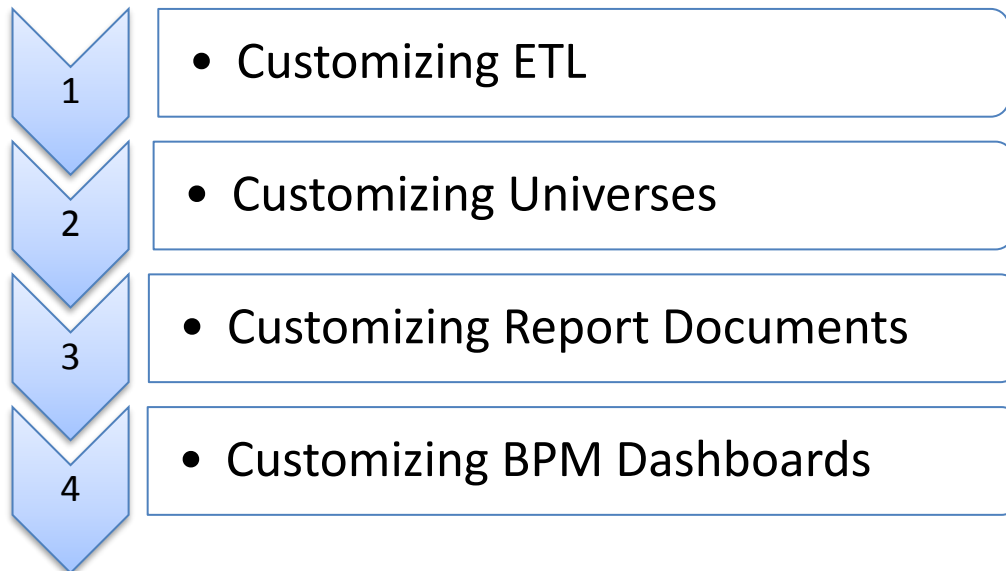
If customizations have been performed following the recommended principles, upgrading to a new BPM standard package should not ruin any custom documents or custom universes.

It is always a good idea to inspect custom documents, and especially universes, to ensure that they are still functioning correctly after an upgrade; the Maconomy database could have been changed and made custom universe elements invalid or require a refresh of the structure.

Customization

Workflow

This process of customization is divided into four main sections, described in the following.



All parts of BPM can in principle be customized in the sense that ETL, Universes, and Report Documents can all be modified to fit the needs of customers.

However, such modifications may be overwritten when upgrading to a new version or service pack of BPM. Therefore it is recommended as a general rule that all customizations are done on copies of the instances. In the following we shall explain further what that means.

Customizing ETL

General Rules

- All customizations to ETL (that is, jobs or transformations) should be done by new jobs and transformations dedicated to handle a certain customization.
- These custom jobs and transformations must be placed in a folder called “custom” or “Custom” in the repository.
- No standard jobs or transformations should be changed.
- The folder structure (aside from that in the “custom” folder) should remain unchanged.
- New jobs/transformations for loading custom-defined data should be scheduled or manually run after the standard LoadData or a custom version of LoadData can be made.
- When upgrading, customizations may need to be reconsidered:
 - An upgrade may introduce standard functionality that previously has been implemented by customizations. It is recommended to include the standard

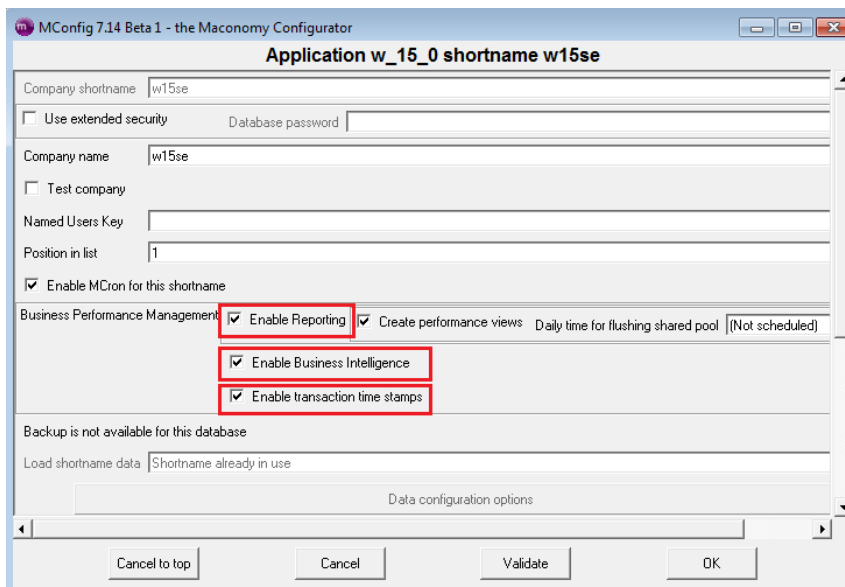
functionality in favor of the customizations, if they fully satisfy the needs of the customer.

- An upgrade may change field names or semantics of fields. Consequently, customizations need to be adjusted carefully.
- An upgrade may declare fields or tables as deprecated (for example, if they are replaced by others or not included in Maconomy anymore). Customizations that rely on such fields and tables should be considered changed. In some situations it may be convenient for the customer to change the customizations such that they still rely on old functionality, for example, deprecated fields. Deprecated fields or tables that are removed by the upgrading process can then be reintroduced in custom tables. Note that a dump of the content of the deprecated table then must be done as part of the upgrade process.
- Carefully document the steps performed in the customization such that these can easily be reconsidered and possibly redone after an upgrade. Primarily, document the following:
 - Which standard tables the custom tables are copies of.
 - Which fields have been added to the copies of the standard tables.
 - The links that have been made.

Transaction Time Stamps for Customized ETL

If the data warehouse ETL has been customized, additional tables may need to have transaction time stamps enabled. For example, if additional tables are maintained by the customized ETL, and incremental load is defined for these tables, the corresponding tables in Maconomy must have transaction time stamp triggers enabled.

Check **Enable Transaction Time Stamps** in MConfig for the database short name. This action enables transaction time stamp triggers for all Maconomy tables, and thus also the tables used in the ETL customization.



Customizing Universes

To ensure that custom universes are not ruined when installing a new BPM package, it is best practice to always introduce a custom universe as a copy of a standard universe or a whole new universe.

To customize a standard universe, complete the following steps:

1. In Information Design Tool, retrieve the desired universe to universe files (see [Retrieve the Universe Files](#))
2. Choose another project or folder than the one used for the universe files of the standard universes.
3. The universe files can be edited freely to fit the customer's needs.
4. Publish the universe. You can choose whether to overwrite the existing universe or publish it with another name or to another folder. If you overwrite the existing (Standard) universe, make sure that all documents that use that universe (for example, Standard documents) indeed should run on the custom universe; otherwise, choose another name or folder for the custom universe.

When upgrading, custom universes that are stored with another name or in another folder are not overwritten. However, it is still recommended that you keep the universe files in case you need to publish the custom universes again.

Customizing Report Documents

This section describes how to complete report documents and universe customizations.

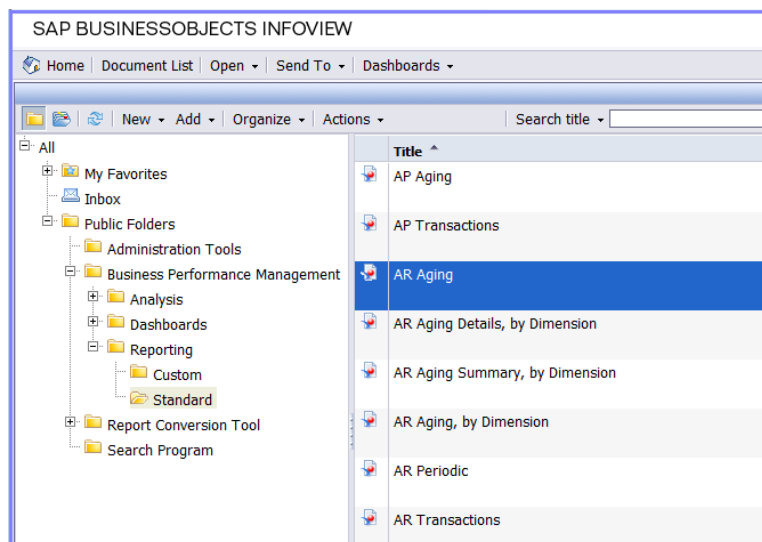
You can create the following customizations:

- Customize a single report
- Customize multiple reports
- Customize document styles

Customizing a Single Report

To customize a single standard report, complete the following steps:

1. In Web Intelligence, locate the standard report to customize (in this example, AR Aging).



2. Open the selected standard report and click **Document » Save As**, then select a custom folder. Click **OK**.



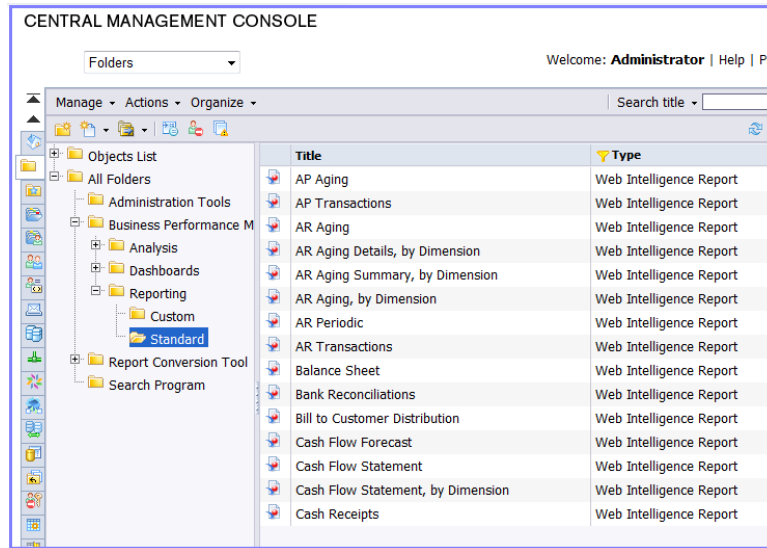
Choose the **Refresh on open** option on the Save As dialog to refresh the report each time that you open it.

3. Make changes to the report and save the document.

Customizing Multiple Reports

To copy all or selected standard reports to a custom location, complete the following steps:

1. In the Central Management Console, click **Business Performance Management » Reporting » Standard** to open the standard reports.



2. Select the report documents that you need, then right-click and select **Organize » Copy To**.
3. On the Copy To screen, select a Custom folder and click **Copy**.

The selected standard reports are now available as copies in the Custom folder.

Customizing Document Styles

The standard report documents are prepared for customization concerning document style. Most of the layout elements use a default setting, which means that their style is taken from a cascading style sheet. An example is that font family, color, and border style in data tables follow the settings of the cascading style sheet.

The cascading style sheet is built into each report document and is not read dynamically.

If you want to use another style, you can import a new style sheet into each document. For convenience the cascading style sheet of the standard report documents is included in the RPU. This cascading style sheet is a good starting point for creating a custom one.

You can do the following with custom cascading style sheets:

- Modify
- Apply the style
- Export

Modify the Style

To modify a cascading style sheet, follow these steps:

1. Copy the cascading style sheet from the RPU to the local machine from which WebIntelligence is run.
2. Open the style sheet in a text editor.
3. Modify the style sheet to the style that you want.
4. Save the style sheet.

Now you can apply the style sheet to your documents.

Apply the Style

To apply the style of a custom cascading style sheet, follow these steps:

1. Open the WebIntelligence document to be modified.
2. Click **Properties**.
3. Click **Document**.
4. In the window that appears, click **Change Default Style...**
5. Click **Import Style**.
6. Browse to and select the modified style sheet file. Click **Close**, **OK**, and **Save**.

The styles of the cascading style sheet are now reflected in the document.

Export the Style

To export the cascading style sheet of a document, follow these steps:

1. Open the WebIntelligence document that contains the style sheet that you want to export.
2. Click **Properties**.
3. Click **Document**.
4. In the window that appears, click **Change Default Style...**
5. Click **Export Style**.
6. Browse to the location of the style sheet file that you want to export.
7. Click **Save**.

A cascading style sheet file that reflects the styles of the document is saved to the file system. You can use this as a foundation for customizing the styles, similar to using the cascading style sheet delivered in the RPU.

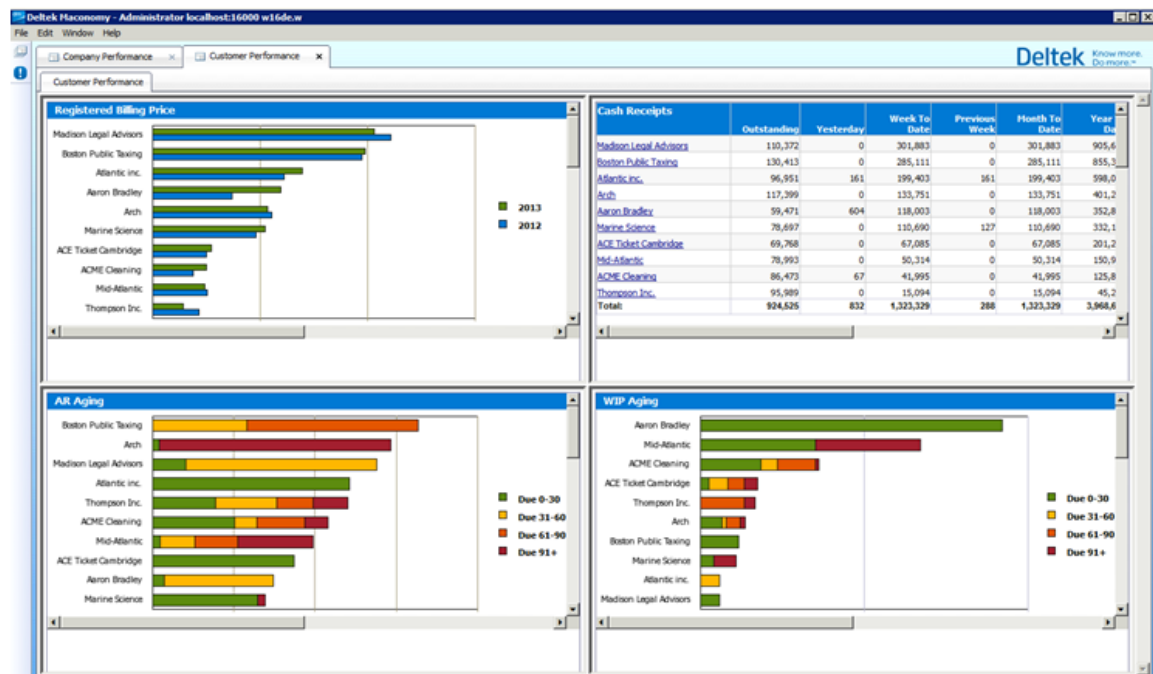
Customizing BPM Dashboards

You can do the following to customize BPM dashboards:

- Edit the JSP files

Editing the JSP Files

Each of the three BPM Dashboards has a JSP page that contains four iFrames that reference dashboard components (Web Documents) in InfoViewApp.



The three JSP pages that are found in the RPU are as follows:

For Standard Dashboards:

/dashboards/reporting/

- CompanyPerformance.jsp
- CustomerPerformance.jsp
- JobPerformance.jsp

For CPA Dashboards:

/dashboards/reporting/cpa/

- CustomerPerformance.jsp
- JobPerformance.jsp



CompanyPerformance.jsp is also used in CPA solution dashboards as the document names used are the same in Standard.

You can see the layout of the iFrames in this part of the code in each JSP:

```

out.println("<table>");
out.println("<tr>");
out.println("<td>");
out.println("<iframe src='" + ProductionRevenue + "' height='100%' width='100%'>"
+ "</iframe>");
out.println("</td>");
out.println("<td>");
out.println("<iframe src='" + CashReceipts + "' height='100%' width='100%'>"
+ "</iframe>");
out.println("</td>");
out.println("</tr>");
out.println("<tr>");
out.println("<td>");
out.println("<iframe src='" + ArAging + "' height='100%' width='100%'>" + "</iframe>");
out.println("</td>");
out.println("<td>");
out.println("<iframe src='" + WIPaging + "' height='100%' width='100%'>"
+ "</iframe>");
out.println("</td>");
out.println("</tr>");
out.println("</table>");

```

The **src** attribute contains the path to the dashboard component.

The following figure shows a sample variable that contains the source path to the dashboard components.

```

//OpenDocument URLs for each of the Job Dashboards Components

String ProductionRevenue="http://" + cmsName +
":8080/OpenDocument/opendoc/openDocument.jsp?sType=wid&sPath=[B
usiness+Performance+Management],[Reporting],[Dashboard+Componen
ts],[Job]&sDocName=Registered+Billing+Price,+Top+10+Jobs+%28Bar
+Chart%29&token=" + wscToken + ...

```

The **sPath** parameter indicates the location of the report/dashboard component.

The **sDocName** indicates the name of the report. Note that the name of the report must be properly URL-encoded with spaces converted to "+" instead of "%20".

You can also pass prompt values to the dashboard components via the URL by using the URL-encoded name of the prompt. Thus, if you want to pass a value to the prompt "Account Manager No:" add the following part to the URL:

```

&lsSAccount+Manager+No%3A=" + accountMgrVal

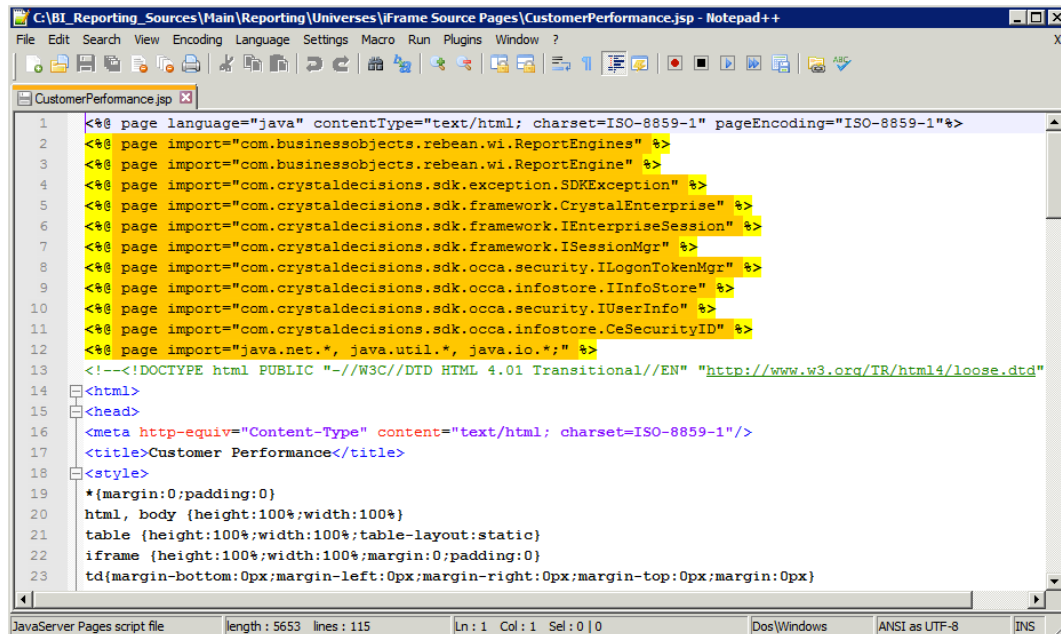
```



The name must be preceded by **ISS**.

An example of how to change the dashboard is shown in the following:

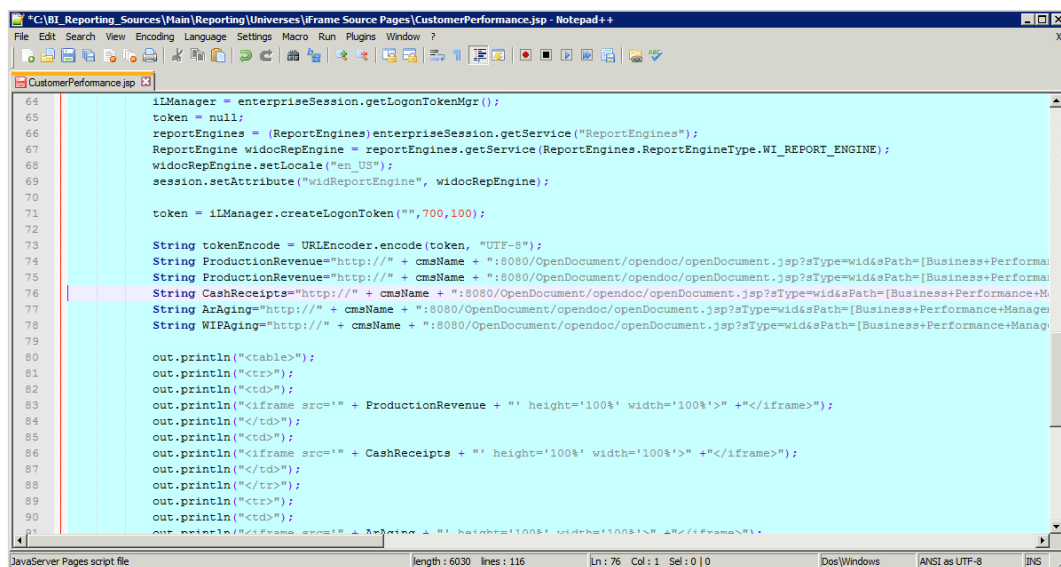
1. Open the file to be changed.



```

1  <%@ page language="java" contentType="text/html; charset=ISO-8859-1" pageEncoding="ISO-8859-1"%>
2  <%@ page import="com.businessobjects.rebean.wi.ReportEngines" %>
3  <%@ page import="com.businessobjects.rebean.wi.ReportEngine" %>
4  <%@ page import="com.crystaldecisions.sdk.exception.SDKException" %>
5  <%@ page import="com.crystaldecisions.sdk.framework.CrystalEnterprise" %>
6  <%@ page import="com.crystaldecisions.sdk.framework.IEnterpriseSession" %>
7  <%@ page import="com.crystaldecisions.sdk.framework.ISessionMgr" %>
8  <%@ page import="com.crystaldecisions.sdk.occa.security.ILogonTokenMgr" %>
9  <%@ page import="com.crystaldecisions.sdk.occa.infostore.IInfoStore" %>
10 <%@ page import="com.crystaldecisions.sdk.occa.security.IUserInfo" %>
11 <%@ page import="com.crystaldecisions.sdk.occa.infostore.CeSecurityID" %>
12 <%@ page import="java.net.*, java.util.*, java.io.*;" %>
13 <!--<!DOCTYPE html PUBLIC "-//W3C//DTD HTML 4.01 Transitional//EN" "http://www.w3.org/TR/html4/loose.dtd"
14 <html>
15 <head>
16 <meta http-equiv="Content-Type" content="text/html; charset=ISO-8859-1"/>
17 <title>Customer Performance</title>
18 <style>
19 *{margin:0;padding:0}
20 html, body {height:100%;width:100%}
21 table {height:100%;width:100%;table-layout:static}
22 iframe {height:100%;width:100%;margin:0;padding:0}
23 td{margin-bottom:0px;margin-left:0px;margin-right:0px;margin-top:0px;margin:0px}
  
```

2. Scroll down to the section where the four dashboard components are referenced.



```

64 iLManager = enterpriseSession.getLogonTokenMgr();
65 token = null;
66 reportEngines = (ReportEngines)enterpriseSession.getService("ReportEngines");
67 ReportEngine widocRepEngine = reportEngines.getService(ReportEngines.ReportEngineType.WI_REPORT_ENGINE);
68 widocRepEngine.setLocale("en_US");
69 session.setAttribute("widReportEngine", widocRepEngine);
70
71 token = iLManager.createLogonToken("",700,100);
72
73 String tokenEncode = URLEncoder.encode(token, "UTF-8");
74 String ProductionRevenue="http://" + cmsName + ":8080/OpenDocument/opendoc/openDocument.jsp?sType=wid&sPath={Business+Performance+Manag
75 String CashReceipts="http://" + cmsName + ":8080/OpenDocument/opendoc/openDocument.jsp?sType=wid&sPath={Business+Performance+M
76 String ArAging="http://" + cmsName + ":8080/OpenDocument/opendoc/openDocument.jsp?sType=wid&sPath={Business+Performance+Manag
77 String WIPaging="http://" + cmsName + ":8080/OpenDocument/opendoc/openDocument.jsp?sType=wid&sPath={Business+Performance+Manag
78
79
80 out.println("<table>");
81 out.println("<tr>");
82 out.println("<td>");
83 out.println("<iframe src='"+ ProductionRevenue + "' height='100%' width='100%'>" + "</iframe>");
84 out.println("</td>");
85 out.println("<td>");
86 out.println("<iframe src='"+ CashReceipts + "' height='100%' width='100%'>" + "</iframe>");
87 out.println("</td>");
88 out.println("<tr>");
89 out.println("<td>");
90 out.println("<iframe src='"+ ArAging + "' height='100%' width='100%'>" + "</iframe>");
91 out.println("</td>");
  
```

3. Create a copy of the line to be changed and comment one out.

```

"C:\BI_Reporting_Sources\Main\Reporting\Universes\Frame Source Pages\CustomerPerformance.jsp - Notepad++
File Edit Search View Encoding Language Settings Macro Run Plugins Window ?
CustomerPerformance.jsp
64 ilManager = enterpriseSession.getLogonTokenMgr();
65 token = null;
66 reportEngines = (ReportEngines)enterpriseSession.getService("ReportEngines");
67 ReportEngine widocRepEngine = reportEngines.getService(ReportEngines.ReportEngineType.WI_REPORT_ENGINE);
68 widocRepEngine.setLocale("en_US");
69 session.setAttribute("widReportEngine", widocRepEngine);
70
71 token = ilManager.createLogonToken("", 700, 100);
72
73 String tokenEncode = URLEncoder.encode(token, "UTF-8");
74 String ProductionRevenue="http://" + cmsName + ":8080/OpenDocument/opendoc/openDocument.jsp?styleType=wid&path={Business+Performance+ProductionRevenue}";
75 String CashReceipts="http://" + cmsName + ":8080/OpenDocument/opendoc/openDocument.jsp?styleType=wid&path={Business+Performance+CashReceipts}";
76 String ArAging="http://" + cmsName + ":8080/OpenDocument/opendoc/openDocument.jsp?styleType=wid&path={Business+Performance+ArAging}";
77 String WIPaging="http://" + cmsName + ":8080/OpenDocument/opendoc/openDocument.jsp?styleType=wid&path={Business+Performance+WIPaging}";
78
79
80 out.println("<table>");
81 out.println("<tr>");
82 out.println("<td>");
83 out.println("<iframe src='"+ ProductionRevenue + "' height='100%' width='100%'>" + "</iframe>");
84 out.println("</td>");
85 out.println("<td>");
86 out.println("<iframe src='"+ CashReceipts + "' height='100%' width='100%'>" + "</iframe>");
87 out.println("</td>");
88 out.println("</tr>");
89 out.println("</table>");
90
91 out.println("</table>");
92
93
94
95
96
97
98
99
100
101
102
103
104
105
106
107
108
109
110
111
112
113
114
115
116
117
118
119
120
121
122
123
124
125
126
127
128
129
130
131
132
133
134
135
136
137
138
139
140
141
142
143
144
145
146
147
148
149
150
151
152
153
154
155
156
157
158
159
160
161
162
163
164
165
166
167
168
169
170
171
172
173
174
175
176
177
178
179
180
181
182
183
184
185
186
187
188
189
190
191
192
193
194
195
196
197
198
199
200
201
202
203
204
205
206
207
208
209
210
211
212
213
214
215
216
217
218
219
220
221
222
223
224
225
226
227
228
229
230
231
232
233
234
235
236
237
238
239
240
241
242
243
244
245
246
247
248
249
250
251
252
253
254
255
256
257
258
259
260
261
262
263
264
265
266
267
268
269
270
271
272
273
274
275
276
277
278
279
280
281
282
283
284
285
286
287
288
289
290
291
292
293
294
295
296
297
298
299
300
301
302
303
304
305
306
307
308
309
310
311
312
313
314
315
316
317
318
319
320
321
322
323
324
325
326
327
328
329
330
331
332
333
334
335
336
337
338
339
340
341
342
343
344
345
346
347
348
349
350
351
352
353
354
355
356
357
358
359
360
361
362
363
364
365
366
367
368
369
370
371
372
373
374
375
376
377
378
379
380
381
382
383
384
385
386
387
388
389
390
391
392
393
394
395
396
397
398
399
400
401
402
403
404
405
406
407
408
409
410
411
412
413
414
415
416
417
418
419
420
421
422
423
424
425
426
427
428
429
430
431
432
433
434
435
436
437
438
439
440
441
442
443
444
445
446
447
448
449
450
451
452
453
454
455
456
457
458
459
460
461
462
463
464
465
466
467
468
469
470
471
472
473
474
475
476
477
478
479
480
481
482
483
484
485
486
487
488
489
490
491
492
493
494
495
496
497
498
499
500
501
502
503
504
505
506
507
508
509
510
511
512
513
514
515
516
517
518
519
520
521
522
523
524
525
526
527
528
529
530
531
532
533
534
535
536
537
538
539
540
541
542
543
544
545
546
547
548
549
550
551
552
553
554
555
556
557
558
559
560
561
562
563
564
565
566
567
568
569
570
571
572
573
574
575
576
577
578
579
580
581
582
583
584
585
586
587
588
589
590
591
592
593
594
595
596
597
598
599
600
601
602
603
604
605
606
607
608
609
610
611
612
613
614
615
616
617
618
619
620
621
622
623
624
625
626
627
628
629
630
631
632
633
634
635
636
637
638
639
640
641
642
643
644
645
646
647
648
649
650
651
652
653
654
655
656
657
658
659
660
661
662
663
664
665
666
667
668
669
670
671
672
673
674
675
676
677
678
679
680
681
682
683
684
685
686
687
688
689
690
691
692
693
694
695
696
697
698
699
700
701
702
703
704
705
706
707
708
709
710
711
712
713
714
715
716
717
718
719
720
721
722
723
724
725
726
727
728
729
730
731
732
733
734
735
736
737
738
739
740
741
742
743
744
745
746
747
748
749
750
751
752
753
754
755
756
757
758
759
760
761
762
763
764
765
766
767
768
769
770
771
772
773
774
775
776
777
778
779
780
781
782
783
784
785
786
787
788
789
790
791
792
793
794
795
796
797
798
799
800
801
802
803
804
805
806
807
808
809
810
811
812
813
814
815
816
817
818
819
820
821
822
823
824
825
826
827
828
829
830
831
832
833
834
835
836
837
838
839
840
841
842
843
844
845
846
847
848
849
850
851
852
853
854
855
856
857
858
859
860
861
862
863
864
865
866
867
868
869
870
871
872
873
874
875
876
877
878
879
880
881
882
883
884
885
886
887
888
889
890
891
892
893
894
895
896
897
898
899
900
901
902
903
904
905
906
907
908
909
910
911
912
913
914
915
916
917
918
919
920
921
922
923
924
925
926
927
928
929
930
931
932
933
934
935
936
937
938
939
940
941
942
943
944
945
946
947
948
949
950
951
952
953
954
955
956
957
958
959
960
961
962
963
964
965
966
967
968
969
970
971
972
973
974
975
976
977
978
979
980
981
982
983
984
985
986
987
988
989
990
991
992
993
994
995
996
997
998
999
1000
1001
1002
1003
1004
1005
1006
1007
1008
1009
1010
1011
1012
1013
1014
1015
1016
1017
1018
1019
1020
1021
1022
1023
1024
1025
1026
1027
1028
1029
1030
1031
1032
1033
1034
1035
1036
1037
1038
1039
1040
1041
1042
1043
1044
1045
1046
1047
1048
1049
1050
1051
1052
1053
1054
1055
1056
1057
1058
1059
1060
1061
1062
1063
1064
1065
1066
1067
1068
1069
1070
1071
1072
1073
1074
1075
1076
1077
1078
1079
1080
1081
1082
1083
1084
1085
1086
1087
1088
1089
1090
1091
1092
1093
1094
1095
1096
1097
1098
1099
1100
1101
1102
1103
1104
1105
1106
1107
1108
1109
1110
1111
1112
1113
1114
1115
1116
1117
1118
1119
1120
1121
1122
1123
1124
1125
1126
1127
1128
1129
1130
1131
1132
1133
1134
1135
1136
1137
1138
1139
1140
1141
1142
1143
1144
1145
1146
1147
1148
1149
1150
1151
1152
1153
1154
1155
1156
1157
1158
1159
1160
1161
1162
1163
1164
1165
1166
1167
1168
1169
1170
1171
1172
1173
1174
1175
1176
1177
1178
1179
1180
1181
1182
1183
1184
1185
1186
1187
1188
1189
1190
1191
1192
1193
1194
1195
1196
1197
1198
1199
1200
1201
1202
1203
1204
1205
1206
1207
1208
1209
1210
1211
1212
1213
1214
1215
1216
1217
1218
1219
1220
1221
1222
1223
1224
1225
1226
1227
1228
1229
1230
1231
1232
1233
1234
1235
1236
1237
1238
1239
1240
1241
1242
1243
1244
1245
1246
1247
1248
1249
1250
1251
1252
1253
1254
1255
1256
1257
1258
1259
1260
1261
1262
1263
1264
1265
1266
1267
1268
1269
1270
1271
1272
1273
1274
1275
1276
1277
1278
1279
1280
1281
1282
1283
1284
1285
1286
1287
1288
1289
1290
1291
1292
1293
1294
1295
1296
1297
1298
1299
1300
1301
1302
1303
1304
1305
1306
1307
1308
1309
1310
1311
1312
1313
1314
1315
1316
1317
1318
1319
1320
1321
1322
1323
1324
1325
1326
1327
1328
1329
1330
1331
1332
1333
1334
1335
1336
1337
1338
1339
1340
1341
1342
1343
1344
1345
1346
1347
1348
1349
1350
1351
1352
1353
1354
1355
1356
1357
1358
1359
1360
1361
1362
1363
1364
1365
1366
1367
1368
1369
1370
1371
1372
1373
1374
1375
1376
1377
1378
1379
1380
1381
1382
1383
1384
1385
1386
1387
1388
1389
1390
1391
1392
1393
1394
1395
1396
1397
1398
1399
1400
1401
1402
1403
1404
1405
1406
1407
1408
1409
1410
1411
1412
1413
1414
1415
1416
1417
1418
1419
1420
1421
1422
1423
1424
1425
1426
1427
1428
1429
1430
1431
1432
1433
1434
1435
1436
1437
1438
1439
1440
1441
1442
1443
1444
1445
1446
1447
1448
1449
1450
1451
1452
1453
1454
1455
1456
1457
1458
1459
1460
1461
1462
1463
1464
1465
1466
1467
1468
1469
1470
1471
1472
1473
1474
1475
1476
1477
1478
1479
1480
1481
1482
1483
1484
1485
1486
1487
1488
1489
1490
1491
1492
1493
1494
1495
1496
1497
1498
1499
1500
1501
1502
1503
1504
1505
1506
1507
1508
1509
1510
1511
1512
1513
1514
1515
1516
1517
1518
1519
1520
1521
1522
1523
1524
1525
1526
1527
1528
1529
1530
1531
1532
1533
1534
1535
1536
1537
1538
1539
1540
1541
1542
1543
1544
1545
1546
1547
1548
1549
1550
1551
1552
1553
1554
1555
1556
1557
1558
1559
1560
1561
1562
1563
1564
1565
1566
1567
1568
1569
1570
1571
1572
1573
1574
1575
1576
1577
1578
1579
1580
1581
1582
1583
1584
1585
1586
1587
1588
1589
1590
1591
1592
1593
1594
1595
1596
1597
1598
1599
1600
1601
1602
1603
1604
1605
1606
1607
1608
1609
1610
1611
1612
1613
1614
1615
1616
1617
1618
1619
1620
1621
1622
1623
1624
1625
1626
1627
1628
1629
1630
1631
1632
1633
1634
1635
1636
1637
1638
1639
1640
1641
1642
1643
1644
1645
1646
1647
1648
1649
1650
1651
1652
1653
1654
1655
1656
1657
1658
1659
1660
1661
1662
1663
1664
1665
1666
1667
1668
1669
1670
1671
1672
1673
1674
1675
1676
1677
1678
1679
1680
1681
1682
1683
1684
1685
1686
1687
1688
1689
1690
1691
1692
1693
1694
1695
1696
1697
1698
1699
1700
1701
1702
1703
1704
1705
1706
1707
1708
1709
1710
1711
1712
1713
1714
1715
1716
1717
1718
1719
1720
1721
1722
1723
1724
1725
1726
1727
1728
1729
1730
1731
1732
1733
1734
1735
1736
1737
1738
1739
1740
1741
1742
1743
1744
1745
1746
1747
1748
1749
1750
1751
1752
1753
1754
1755
1756
1757
1758
1759
1760
1761
1762
1763
1764
1765
1766
1767
1768
1769
1770
1771
1772
1773
1774
1775
1776
1777
1778
1779
1780
1781
1782
1783
1784
1785
1786
1787
1788
1789
1790
1791
1792
1793
1794
1795
1796
1797
1798
1799
1800
1801
1802
1803
1804
1805
1806
1807
1808
1809
1810
1811
1812
1813
1814
1815
1816
1817
1818
1819
1820
1821
1822
1823
1824
1825
1826
1827
1828
1829
1830
1831
1832
1833
1834
1835
1836
1837
1838
1839
1840
1841
1842
1843
1844
1845
1846
1847
1848
1849
1850
1851
1852
1853
1854
1855
1856
1857
1858
1859
1860
1861
1862
1863
1864
1865
1866
1867
1868
1869
1870
1871
1872
1873
1874
1875
1876
1877
1878
1879
1880
1881
1882
1883
1884
1885
1886
1887
1888
1889
1890
1891
1892
1893
1894
1895
1896
1897
1898
1899
1900
1901
1902
1903
1904
1905
1906
1907
1908
1909
1910
1911
1912
1913
1914
1915
1916
1917
1918
1919
1920
1921
1922
1923
1924
1925
1926
1927
1928
1929
1930
1931
1932
1933
1934
1935
1936
1937
1938
1939
1940
1941
1942
1943
1944
1945
1946
1947
1948
1949
1950
1951
1952
1953
1954
1955
1956
1957
1958
1959
1960
1961
1962
1963
1964
1965
1966
1967
1968
1969
1970
1971
1972
1973
1974
1975
1976
1977
1978
1979
1980
1981
1982
1983
1984
1985
1986
1987
1988
1989
1990
1991
1992
1993
1994
1995
1996
1997
1998
1999
2000
2001
2002
2003
2004
2005
2006
2007
2008
2009
2010
2011
2012
2013
2014
2015
2016
2017
2018
2019
2020
2021
2022
2023
2024
2025
2026
2027
2028
2029
2030
2031
2032
2033
2034
2035
2036
2037
2038
2039
2040
2041
2042
2043
2044
2045
2046
2047
2048
2049
2050
2051
2052
2053
2054
2055
2056
2057
2058
2059
2060
2061
2062
2063
2064
2065
2066
2067
2068
2069
2070
2071
2072
2073
2074
2075
2076
2077
2078
2079
2080
2081
2082
2083
2084
2085
2086
2087
2088
2089
2090
2091
2092
2093
2094
2095
2096
2097
2098
2099
2100
2101
2102
2103
2104
2105
2106
2107
2108
2109
2110
2111
2112
2113
2114
2115
2116
2117
2118
2119
2120
2121
2122
2123
2124
2125
2126
2127
2128
2129
2130
2131
2132
2133
2134
2135
2136
2137
2138
2139
2140
2141
2142
2143
2144
2145
2146
2147
2148
2149
2150
2151
2152
2153
2154
2155
2156
2157
2158
2159
2160
2161
2162
2163
2164
2165
2166
2167
2168
2169
2170
2171
2172
2173
2174
2175
2176
2177
2178
2179
2180
2181
2182
2183
2184
2185
2186
2187
2188
2189
2190
2191
2192
2193
2194
2195
2196
2197
2198
2199
2200
2201
2202
2203
2204
2205
2206
2207
2208
2209
2210
2211
2212
2213
2214
2215
2216
2217
2218
2219
2220
2221
2222
2223
2224
2225
2226
2227
2228
2229
2230
2231
2232
2233
2234
2235
2236
2237
2238
2239
2240
2241
2242
2243
2244
2245
2246
2247
2248
2249
2250
2251
2252
2253
2254
2255
2256
2257
2258
2259
2260
2261
2262
2263
2264
2265
2266
2267
2268
2269
2270
2271
2272
2273
2274
2275
2276
2277
2278
2279
2280
2281
2282
2283
2284
2285
2286
2287
2288
2289
2290
2291
2292
2293
2294
2295
2296
2297
2298
2299
2300
2301
2302
2303
2304
2305
2306
2307
2308
2309
2310
2311
2312
2313
2314
2315
2316
2317
2318
2319
2320
2321
2322
2323
2324
2325
2326
2327
2328
2329
2330
2331
2332
2333
2334
2335
2336
2337
2338
2339
2340
2341
2342
2343
2344
2345
2346
2347
2348
2349
2350
2351
2352
2353
2354
2355
2356
2357
2358
2359
2360
2361
2362
2363
2364
2365
2366
2367
2368
2369
2370
2371
2372
2373
2374
2375
2376
2377
2378
2379
2380
2381
2382
2383
2384
2385
2386
2387
2388
2389
2390
2391
2392
2393
2394
2395
2396
2397
2398
2399
2400
2401
2402
2403
2404
2405
2406
2407
2408
2409
2410
2411
2412
2413
2414
2415
2416
2417
2418
2419
2420
2421
2422
2423
2424
2425
2426
2427
2428
2429
2430
2431
2432
2433
2434
2435
2436
2437
2438
2439
2440
2441
2442
2443
2444
2445
2446
2447
2448
2449
2450
2451
2452
2453
2454
2455
2456
2457
2458
2459
2460
2461
2462
2463
2464
2465
2466
2467
2468
2469
2470
2471
2472
2473
2474
2475
2476
2477
2478
2479
2480
2481
2482
2483
2484
2485
2486
2487
2488
2489
2490
2491
2492
2493
2494
2495
2496
2497
2498
2499
2500
2501
2502
2503
2504
2505
2506
2507
2508
2509
2510
2511
2512
2513
2514
2515
2516
2517
2518
2519
2520
2521
2522
2523
2524
2525
2526
2527
2528
2529
2530
2531
2532
2533
2534
2535
2536
2537
2538
2539
2540
2541
2542
2543
2544
2545
2546
2547
2548
2549
2550
2551
2552
2553
2554
2555
2556
2557
2558
2559
2560
2561
2562
2563
2564
2565
2566
2567
2568
2569
2570
2571
2572
2573
2574
2575
2576
2577
2578
2579
2580
2581
2582
2583
2584
2585
2586
2587
2588
2589
2590
2591
2592
2593
2594
2595
2596
2597
2598
2599
2600
2601
2602
2603
2604
2605
2606
2607
2608
2609
2610
2611
2612

```

```

1  *C:\BI.Reporting_Sources\Main\Reporting\Universes\Frame Source Pages\CustomerPerformance.jsp - Notepad++
2  File Edit Search View Encoding Language Settings More Run Plugins Window ?
3
4  CustomerPerformance.jsp
5
6  64
7  65
8  66
9  67
10 68
11 69
12 70
13 71
14 72
15 73
16 74
17 75
18 76
19 77
20 78
21 79
22 80
23 81
24 82
25 83
26 84
27 85
28 86
29 87
30 88
31 89
32 90
33 91
34 92
35 93
36 94
37 95
38 96
39 97
40 98
41 99
42 100
43 101
44 102
45 103
46 104
47 105
48 106
49 107
50 108
51 109
52 110
53 111
54 112
55 113
56 114
57 115
58 116
59 117
60 118
61 119
62 120
63 121
64 122
65 123
66 124
67 125
68 126
69 127
70 128
71 129
72 130
73 131
74 132
75 133
76 134
77 135
78 136
79 137
80 138
81 139
82 140
83 141
84 142
85 143
86 144
87 145
88 146
89 147
90 148
91 149
92 150
93 151
94 152
95 153
96 154
97 155
98 156
99 157
100 158
101 159
102 160
103 161
104 162
105 163
106 164
107 165
108 166
109 167
110 168
111 169
112 170
113 171
114 172
115 173
116 174
117 175
118 176
119 177
120 178
121 179
122 180
123 181
124 182
125 183
126 184
127 185
128 186
129 187
130 188
131 189
132 190
133 191
134 192
135 193
136 194
137 195
138 196
139 197
140 198
141 199
142 200
143 201
144 202
145 203
146 204
147 205
148 206
149 207
150 208
151 209
152 210
153 211
154 212
155 213
156 214
157 215
158 216
159 217
160 218
161 219
162 220
163 221
164 222
165 223
166 224
167 225
168 226
169 227
170 228
171 229
172 230
173 231
174 232
175 233
176 234
177 235
178 236
179 237
180 238
181 239
182 240
183 241
184 242
185 243
186 244
187 245
188 246
189 247
190 248
191 249
192 250
193 251
194 252
195 253
196 254
197 255
198 256
199 257
200 258
201 259
202 260
203 261
204 262
205 263
206 264
207 265
208 266
209 267
210 268
211 269
212 270
213 271
214 272
215 273
216 274
217 275
218 276
219 277
220 278
221 279
222 280
223 281
224 282
225 283
226 284
227 285
228 286
229 287
230 288
231 289
232 290
233 291
234 292
235 293
236 294
237 295
238 296
239 297
240 298
241 299
242 300
243 301
244 302
245 303
246 304
247 305
248 306
249 307
250 308
251 309
252 310
253 311
254 312
255 313
256 314
257 315
258 316
259 317
260 318
261 319
262 320
263 321
264 322
265 323
266 324
267 325
268 326
269 327
270 328
271 329
272 330
273 331
274 332
275 333
276 334
277 335
278 336
279 337
280 338
281 339
282 340
283 341
284 342
285 343
286 344
287 345
288 346
289 347
290 348
291 349
292 350
293 351
294 352
295 353
296 354
297 355
298 356
299 357
300 358
301 359
302 360
303 361
304 362
305 363
306 364
307 365
308 366
309 367
310 368
311 369
312 370
313 371
314 372
315 373
316 374
317 375
318 376
319 377
320 378
321 379
322 380
323 381
324 382
325 383
326 384
327 385
328 386
329 387
330 388
331 389
332 390
333 391
334 392
335 393
336 394
337 395
338 396
339 397
340 398
341 399
342 400
343 401
344 402
345 403
346 404
347 405
348 406
349 407
350 408
351 409
352 410
353 411
354 412
355 413
356 414
357 415
358 416
359 417
360 418
361 419
362 420
363 421
364 422
365 423
366 424
367 425
368 426
369 427
370 428
371 429
372 430
373 431
374 432
375 433
376 434
377 435
378 436
379 437
380 438
381 439
382 440
383 441
384 442
385 443
386 444
387 445
388 446
389 447
390 448
391 449
392 450
393 451
394 452
395 453
396 454
397 455
398 456
399 457
400 458
401 459
402 460
403 461
404 462
405 463
406 464
407 465
408 466
409 467
410 468
411 469
412 470
413 471
414 472
415 473
416 474
417 475
418 476
419 477
420 478
421 479
422 480
423 481
424 482
425 483
426 484
427 485
428 486
429 487
430 488
431 489
432 490
433 491
434 492
435 493
436 494
437 495
438 496
439 497
440 498
441 499
442 500
443 501
444 502
445 503
446 504
447 505
448 506
449 507
450 508
451 509
452 510
453 511
454 512
455 513
456 514
457 515
458 516
459 517
460 518
461 519
462 520
463 521
464 522
465 523
466 524
467 525
468 526
469 527
470 528
471 529
472 530
473 531
474 532
475 533
476 534
477 535
478 536
479 537
480 538
481 539
482 540
483 541
484 542
485 543
486 544
487 545
488 546
489 547
490 548
491 549
492 550
493 551
494 552
495 553
496 554
497 555
498 556
499 557
500 558
501 559
502 560
503 561
504 562
505 563
506 564
507 565
508 566
509 567
510 568
511 569
512 570
513 571
514 572
515 573
516 574
517 575
518 576
519 577
520 578
521 579
522 580
523 581
524 582
525 583
526 584
527 585
528 586
529 587
530 588
531 589
532 590
533 591
534 592
535 593
536 594
537 595
538 596
539 597
540 598
541 599
542 600
543 601
544 602
545 603
546 604
547 605
548 606
549 607
550 608
551 609
552 610
553 611
554 612
555 613
556 614
557 615
558 616
559 617
560 618
561 619
562 620
563 621
564 622
565 623
566 624
567 625
568 626
569 627
570 628
571 629
572 630
573 631
574 632
575 633
576 634
577 635
578 636
579 637
580 638
581 639
582 640
583 641
584 642
585 643
586 644
587 645
588 646
589 647
590 648
591 649
592 650
593 651
594 652
595 653
596 654
597 655
598 656
599 657
600 658
601 659
602 660
603 661
604 662
605 663
606 664
607 665
608 666
609 667
610 668
611 669
612 670
613 671
614 672
615 673
616 674
617 675
618 676
619 677
620 678
621 679
622 680
623 681
624 682
625 683
626 684
627 685
628 686
629 687
630 688
631 689
632 690
633 691
634 692
635 693
636 694
637 695
638 696
639 697
640 698
641 699
642 700
643 701
644 702
645 703
646 704
647 705
648 706
649 707
650 708
651 709
652 710
653 711
654 712
655 713
656 714
657 715
658 716
659 717
660 718
661 719
662 720
663 721
664 722
665 723
666 724
667 725
668 726
669 727
670 728
671 729
672 730
673 731
674 732
675 733
676 734
677 735
678 736
679 737
680 738
681 739
682 740
683 741
684 742
685 743
686 744
687 745
688 746
689 747
690 748
691 749
692 750
693 751
694 752
695 753
696 754
697 755
698 756
699 757
700 758
701 759
702 760
703 761
704 762
705 763
706 764
707 765
708 766
709 767
710 768
711 769
712 770
713 771
714 772
715 773
716 774
717 775
718 776
719 777
720 778
721 779
722 780
723 781
724 782
725 783
726 784
727 785
728 786
729 787
730 788
731 789
732 790
733 791
734 792
735 793
736 794
737 795
738 796
739 797
740 798
741 799
742 800
743 801
744 802
745 803
746 804
747 805
748 806
749 807
750 808
751 809
752 810
753 811
754 812
755 813
756 814
757 815
758 816
759 817
760 818
761 819
762 820
763 821
764 822
765 823
766 824
767 825
768 826
769 827
770 828
771 829
772 830
773 831
774 832
775 833
776 834
777 835
778 836
779 837
780 838
781 839
782 840
783 841
784 842
785 843
786 844
787 845
788 846
789 847
790 848
791 849
792 850
793 851
794 852
795 853
796 854
797 855
798 856
799 857
800 858
801 859
802 860
803 861
804 862
805 863
806 864
807 865
808 866
809 867
810 868
811 869
812 870
813 871
814 872
815 873
816 874
817 875
818 876
819 877
820 878
821 879
822 880
823 881
824 882
825 883
826 884
827 885
828 886
829 887
830 888
831 889
832 890
833 891
834 892
835 893
836 894
837 895
838 896
839 897
840 898
841 899
842 900
843 901
844 902
845 903
846 904
847 905
848 906
849 907
850 908
851 909
852 910
853 911
854 912
855 913
856 914
857 915
858 916
859 917
860 918
861 919
862 920
863 921
864 922
865 923
866 924
867 925
868 926
869 927
870 928
871 929
872 930
873 931
874 932
875 933
876 934
877 935
878 936
879 937
880 938
881 939
882 940
883 941
884 942
885 943
886 944
887 945
888 946
889 947
890 948
891 949
892 950
893 951
894 952
895 953
896 954
897 955
898 956
899 957
900 958
901 959
902 960
903 961
904 962
905 963
906 964
907 965
908 966
909 967
910 968
911 969
912 970
913 971
914 972
915 973
916 974
917 975
918 976
919 977
920 978
921 979
922 980
923 981
924 982
925 983
926 984
927 985
928 986
929 987
930 988
931 989
932 990
933 991
934 992
935 993
936 994
937 995
938 996
939 997
940 998
941 999
942 1000
943 1001
944 1002
945 1003
946 1004
947 1005
948 1006
949 1007
950 1008
951 1009
952 1010
953 1011
954 1012
955 1013
956 1014
957 1015
958 1016
959 1017
960 1018
961 1019
962 1020
963 1021
964 1022
965 1023
966 1024
967 1025
968 1026
969 1027
970 1028
971 1029
972 1030
973 1031
974 1032
975 1033
976 1034
977 1035
978 1036
979 1037
980 1038
981 1039
982 1040
983 1041
984 1042
985 1043
986 1044
987 1045
988 1046
989 1047
990 1048
991 1049
992 1050
993 1051
994 1052
995 1053
996 1054
997 1055
998 1056
999 1057
1000 1058
1001 1059
1002 1060
1003 1061
1004 1062
1005 1063
1006 1064
1007 1065
1008 1066
1009 1067
1010 1068
1011 1069
1012 1070
1013 1071
1014 1072
1015 1073
1016 1074
1017 1075
1018 1076
1019 1077
1020 1078
1021 1079
1022 1080
1023 1081
1024 1082
1025 1083
1026 1084
1027 1085
1028 1086
1029 1087
1030 1088
1031 1089
1032 1090
1033 1091
1034 1092
1035 1093
1036 1094
1037 1095
1038 1096
1039 1097
1040 1098
1041 1099
1042 1100
1043 1101
1044 1102
1045 1103
1046 1104
1047 1105
1048 1106
1049 1107
1050 1108
1051 1109
1052 1110
1053 1111
1054 1112
1055 1113
1056 1114
1057 1115
1058 1116
1059 1117
1060 1118
1061 1119
1062 1120
1063 1121
1064 1122
1065 1123
1066 1124
1067 1125
1068 1126
1069 1127
1070 1128
1071 1129
1072 1130
1073 1131
1074 1132
1075 1133
1076 1134
1077 1135
1078 1136
1079 1137
1080 1138
1081 1139
1082 1140
1083 1141
1084 1142
1085 1143
1086 1144
1087 1145
1088 1146
1089 1147
1090 1148
1091 1149
1092 1150
1093 1151
1094 1152
1095 1153
1096 1154
1097 1155
1098 1156
1099 1157
1100 1158
1101 1159
1102 1160
1103 1161
1104 1162
1105 1163
1106 1164
1107 1165
1108 1166
1109 1167
1110 1168
1111 1169
1112 1170
1113 1171
1114 1172
1115 1173
1116 1174
1117 1175
1118 1176
1119 1177
1120 1178
1121 1179
1122 1180
1123 1181
1124 1182
1125 1183
1126 1184
1127 1185
1128 1186
1129 1187
1130 1188
1131 1189
1132 1190
1133 1191
1134 1192
1135 1193
1136 1194
1137 1195
1138 1196
1139 1197
1140 1198
1141 1199
1142 1200
1143 1201
1144 1202
1145 1203
1146 1204
1147 1205
1148 1206
1149 1207
1150 1208
1151 1209
1152 1210
1153 1211
1154 1212
1155 1213
1156 1214
1157 1215
1158 1216
1159 1217
1160 1218
1161 1219
1162 1220
1163 1221
1164 1222
1165 1223
1166 1224
1167 1225
1168 1226
1169 1227
1170 1228
1171 1229
1172 1230
1173 1231
1174 1232
1175 1233
1176 1234
1177 1235
1178 1236
1179 1237
1180 1238
1181 1239
1182 1240
1183 1241
1184 1242
1185 1243
1186 1244
1187 1245
1188 1246
1189 1247
1190 1248
1191 1249
1192 1250
1193 1251
1194 1252
1195 1253
1196 1254
1197 1255
1198 1256
1199 1257
1200 1258
1201 1259
1202 1260
1203 1261
1204 1262
1205 1263
1206 1264
1207 1265
1208 1266
1209 1267
1210 1268
1211 1269
1212 1270
1213 1271
1214 1272
1215 1273
1216 1274
1217 1275
1218 1276
1219 1277
1220 1278
1221 1279
1222 1280
1223 1281
1224 1282
1225 1283
1226 1284
1227 1285
1228 1286
1229 1287
1230 1288
1231 1289
1232 1290
1233 1291
1234 1292
1235 1293
1236 1294
1237 1295
1238 1296
1239 1297
1240 1298
1241 1299
1242 1300
1243 1301
1244 1302
1245 1303
1246 1304
1247 1305
1248 1306
1249 1307
1250 1308
1251 1309
1252 1310
1253 1311
1254 1312
1255 1313
1256 1314
1257 1315
1258 1316
1259 1317
1260 1318
1261 1319
1262 1320
1263 1321
1264 1322
1265 1323
1266 1324
1267 1325
1268 1326
1269 1327
1270 1328
1271 1329
1272 1330
1273 1331
1274 1332
1275 1333
1276 1334
1277 1335
1278 1336
1279 1337
1280 1338
1281 1339
1282 1340
1283 1341
1284 1342
1285 1343
1286 1344
1287 1345
1288 1346
1289 1347
1290 1348
1291 1349
1292 1350
1293 1351
1294 1352
1295 1353
1296 1354
1297 1355
1298 1356
1299 1357
1300 1358
1301 1359
1302 1360
1303 1361
1304 1362
1305 1363
1306 1364
1307 1365
1308 1366
1309 1367
1310 1368
1311 1369
1312 1370
1313 1371
1314 1372
1315 1373
1316 1374
1317 1375
1318 1376
1319 1377
1320 1378
1321 1379
1322 1380
1323 1381
1324 1382
1325 1383
1326 1384
1327 1385
1328 1386
1329 1387
1330 1388
1331 1389
1332 1390
1333 1391
1334 1392
1335 1393
1336 1394
1337 1395
1338 1396
1339 1397
1340 1398
1341 1399
1342 1400
1343 1401
1344 1402
1345 1403
1346 1404
1347 1405
1348 1406
1349 1407
1350 1408
1351 1409
1352 1410
1353 1411
1354 1412
1355 1413
1356 1414
1357 1415
1358 1416
1359 1417
1360 1418
1361 1419
1362 1420
1363 1421
1364 1422
1365 1423
1366 1424
1367 1425
1368 1426
1369 1427
1370 1428
1371 1429
1372 1430
1373 1431
1374 1432
1375 1433
1376 1434
1377 1435
1378 1436
1379 1437
1380 1438
1381 1439
1382 1440
1383 1441
1384 1442
1385 1443
1386 1444
1387 1445
1388 1446
1389 1447
1390 1448
1391 1449
1392 1450
1393 1451
1394 1452
1395 1453
1396 1454
1397 1455
1398 1456
1399 1457
1400 1458
1401 1459
1402 1460
1403 1461
1404 1462
1405 1463
1406 1464
1407 1465
1408 1466
1409 1467
1410 1468
1411 1469
1412 1470
1413 1471
1414 1472
1415 1473
1416 1474
1417 1475
1418 1476
1419 1477
1420 1478
1421 1479
1422 1480
1423 1481
1424 1482
1425 1483
1426 1484
1427 1485
1428 1486
1429 1487
1430 1
```


Other Setup

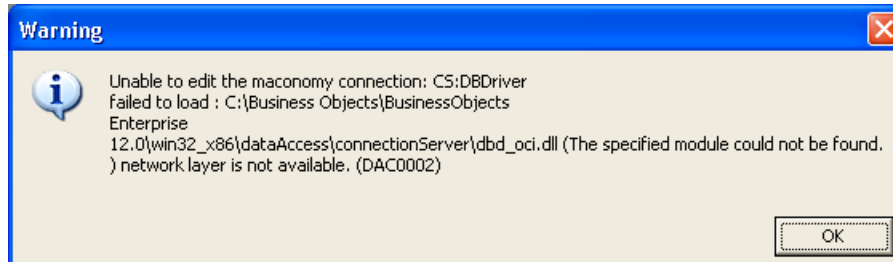
In this section...

This section includes these additional procedures:

- Install the Oracle Instant Client Drivers (Windows)
- Set Up an ODBC Connection for SQL Server
- Enable Unicode
- Increase the Number of WebI Connections
- Configure Characterset Settings if Using Oracle
- User Setup and Single Sign-On
- Configure Logon Token on BusinessObjects
- Localization
- Handling BusinessObjects Services
- Use a Non-Standard Web Server Port
- Set Templates for Web Intelligence
- Burst Publishing
- Materialized Views on Oracle

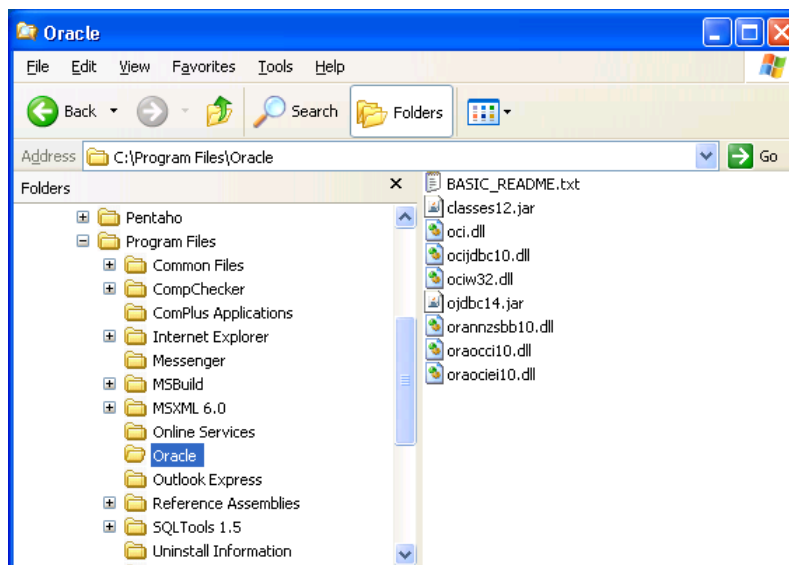
Install the Oracle Instant Client Drivers (Windows)

If your Maconomy system uses Oracle DBMS, and the BPM server is different from the one that has the Maconomy database, you must install Oracle drivers to allow BusinessObjects access to the database and to prevent the following warning.

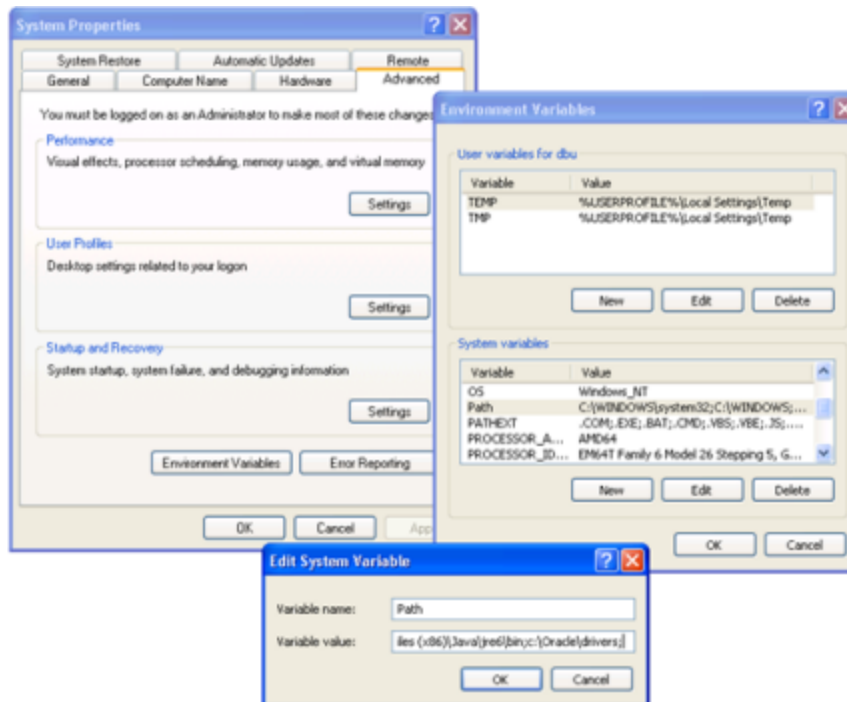


To install the Oracle Instant Client Drivers, follow these steps:

1. Navigate to: <http://www.oracle.com/technology/software/tech/oci/instantclient/index.html>.
2. Select your operating system.
3. Review and accept the license agreement and click **Next**.
4. Download either **Instant Client Package-Basic** or **Instant Client Package-Basic Lite**.
5. Unpack the drivers to a folder (for example, C:\Program Files\Oracle).



6. Add the path to the drivers to the PATH variable.



7. Create the variable **TNS_ADMIN** with the path to the same folder.
8. Create **tnsnames.ora** in the folder, for example:

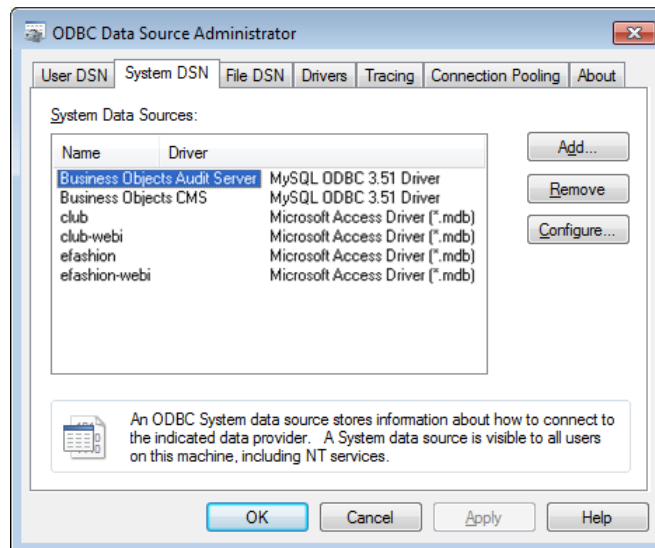
```
maconomy =
(DESCRIPTION =
  (ADDRESS_LIST =
    (ADDRESS = (PROTOCOL = TCP) (HOST = MACONOMYSERVER) (PORT =
      1521))
  )
  (CONNECT_DATA =
    (SERVICE_NAME = maconomy)
  )
)
```

In this example, MACONOMYSERVER is the server that hosts the maconomy database, and maconomy is the SID of that database.

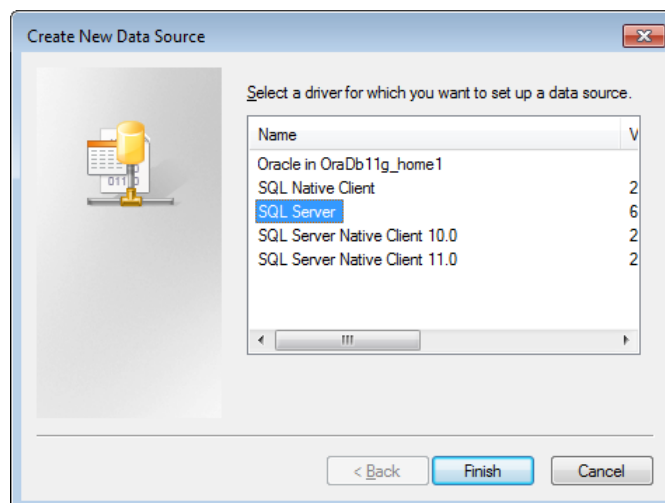
Set Up an ODBC Connection for SQL Server

To set up the ODBC connection, follow these steps:

1. Run Data Sources (ODBC) using the appropriate path:
 - For 32-bit Windows — Click **Control Panel » Administrative Tools » Data Sources (ODBC)**.
 - For 64-bit Windows — Click **All Programs » BusinessObjects XI 3.1 » BusinessObjects Enterprise » 32-bit Data Source (ODBC)**.
2. Click **Add**.

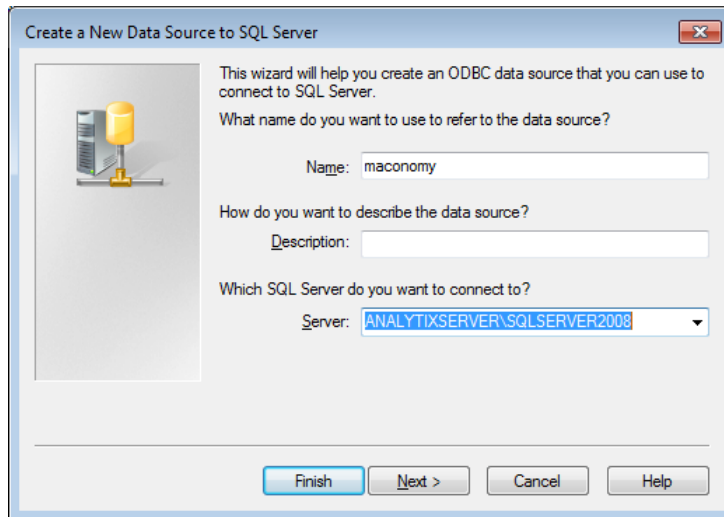


3. Select **SQL Server** and click **Finish**.



The Create a New Data Source to SQL Server wizard is displayed.

4. Enter the **Name**, **Description**, and **Server** information, and click **Next**.



Create a New Data Source to SQL Server

This wizard will help you create an ODBC data source that you can use to connect to SQL Server.

What name do you want to use to refer to the data source?

Name:

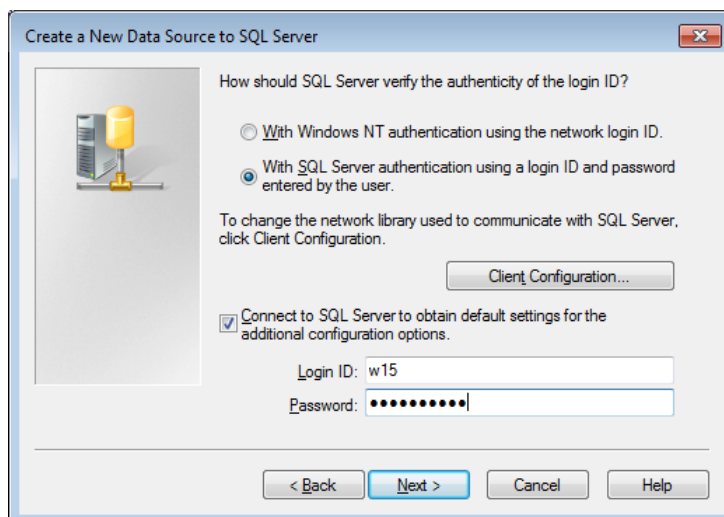
How do you want to describe the data source?

Description:

Which SQL Server do you want to connect to?

Server:

5. Select the method to use for authentication and click **Next**.



Create a New Data Source to SQL Server

How should SQL Server verify the authenticity of the login ID?

☐ With Windows NT authentication using the network login ID.

☒ With SQL Server authentication using a login ID and password entered by the user.

To change the network library used to communicate with SQL Server, click Client Configuration.

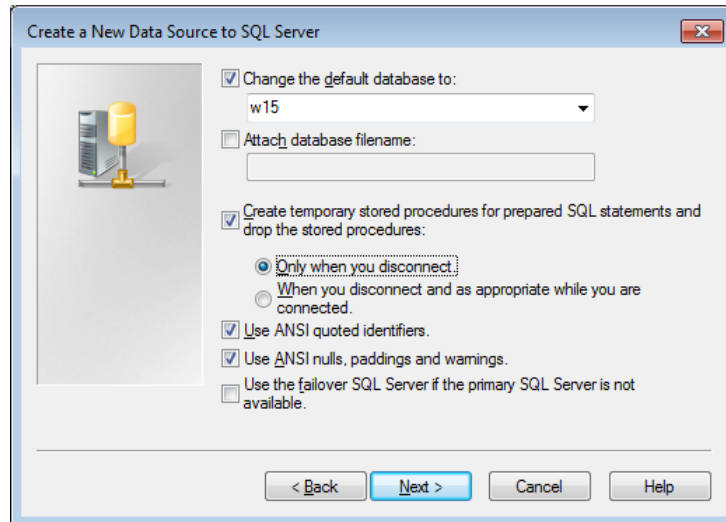
☒ Connect to SQL Server to obtain default settings for the additional configuration options.

Login ID:

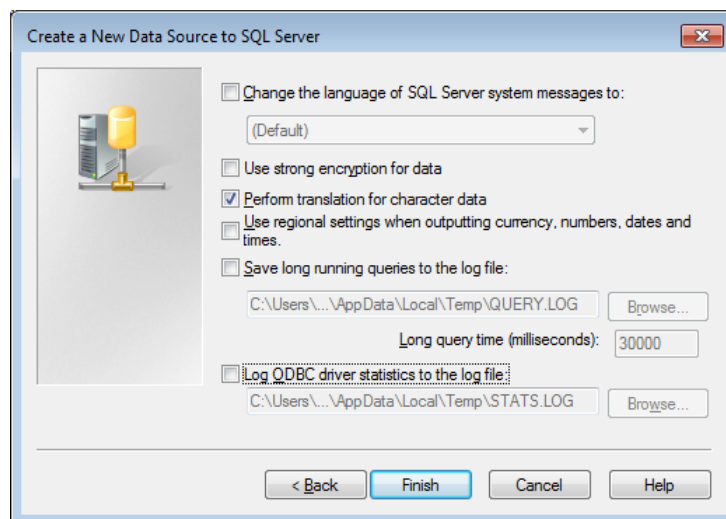
Password:

6. Enter the default database and ANSI information and click **Next**.

The following dialog box is displayed.



7. Click **Finish** to complete the process.



Enable Unicode

Beginning with version 16.0 (2.1), the Maconomy database and BPM must be Unicode-enabled. You do this as part of the installation or upgrade.

To set up BPM for supporting Unicode, follow these steps:

1. After you enable the Maconomy database for Unicode, follow the same steps for enabling the BPM Datawarehouse database for Unicode. See the documentation for information about how to enable Unicode on the Maconomy database.
2. If you are upgrading BPM Analysis, perform the upgrade steps as described in the [Upgrade](#) section.
3. If this is a new installation, perform the installation steps that are described in the BPM Analysis Installation Guide. Note that the database for the data warehouse must be Unicode-enabled.
4. If you have BusinessObjects installed on Windows, perform the following steps:
 - a. In the Windows registry set the following key:
`HKEY_LOCAL_MACHINE\SOFTWARE\ORACLE\KEY_OraDb11g_home1\NLS_LANG`
to
`AMERICAN_AMERICA.AL32UTF8`
 - b. Create a system variable `NLS_LANG` and assign it the value:
`AMERICAN_AMERICA.AL32UTF8`
5. If you have BusinessObjects installed on Linux or AIX, perform the following steps:
 - a. Set up an environment variable `NLS_LANG` with the value `AMERICAN_AMERICA.AL32UTF8`.
 - b. Restart the BusinessObjects services.

Ensure that universes have the parameter `UNICODE_STRINGS` set to `YES` (this is the default value).

Increase the Number of WebI Connections

In the solutions, the Workspace Client embeds various BPM Reporting reports. To support this, you must increase the default number of parallel connections.

To increase the number of parallel connections, follow these steps:

1. Log in to BusinessObjects Enterprise Central Management Console (CMC).
2. Click **Servers**.
3. Expand **Server Categories** and click **Web Intelligence**.
4. Under **Server name**, double-click **WebIntelligenceProcessingServer**.

The **Properties** window appears.

5. In the **Properties** window, under **Web Intelligence Processing Service**, enter the appropriate number of parallel connections.

The default value is 50. It is recommended that you increase the value to at least 100.

Alternatively, add more servers. Adding one more server with the default of 50 parallel connections yields the same number of connections (100) as the preceding steps.

On large production systems, it is recommended that you increase the number of servers and then lower the number of parallel connections on each of those servers. However, note that each user who runs the Workspace Client occupies a number of WebI connections.



It is recommended that you **not** have more than one Web Intelligence Report server per available CPU core.

Configure Characterset Settings if Using Oracle

BusinessObjects needs to know the character set of Oracle to correctly display characters. You should set the environment variable NLS_LANG on the BO server.

To configure character set settings, follow these steps:

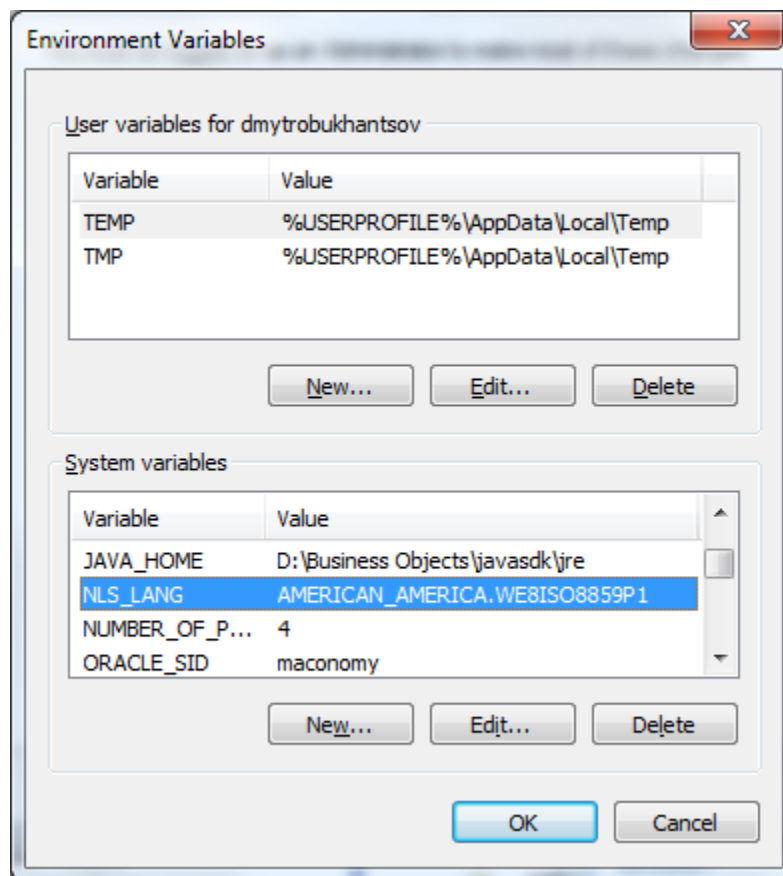
1. Determine the NLS_LANGUAGE and NLS_CHARACTERSET using the following statement:

```
SELECT * FROM NLS_DATABASE_PARAMETERS WHERE PARAMETER IN  
( 'NLS_LANGUAGE', 'NLS_CHARACTERSET' )
```



For the default setup, the result is AMERICAN, WE8ISO8859P1.

2. Set the environment variable NLS_LANG to the concatenation of these two strings separated by a dot, for example, AMERICAN.WE8ISO8859P1.



User Setup and Single Sign-On

This section contains the following topics:

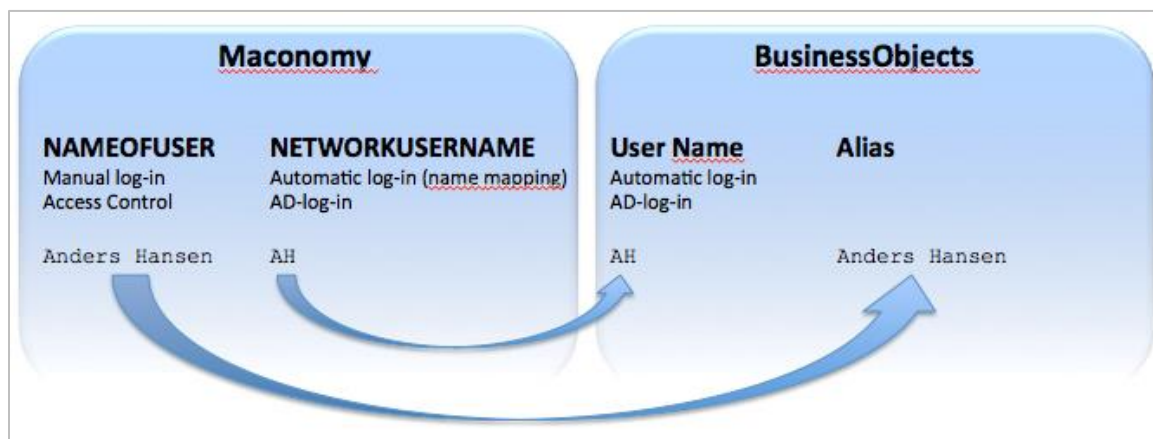
- User setup and single sign-on overview
- Active desktop and Maconomy configurations
- USync
- Configure a tenant in a multitenancy environment
- Control which users to create
- Error handling
- Assign report and universe rights

In Maconomy, access to data is controlled by the user name (**NameOfUser**). If single sign-on (SSO) is not defined and used, a user must log in to BusinessObjects using the same user name to be able to access data.

However, most often SSO is defined both in Maconomy and BusinessObjects.

- In Maconomy, a network user name is defined for each user. This network user name is equal to the active directory (AD) (Windows) user name. When you log in to the network, log-in is automatically performed in Maconomy using the network user name. Access to data is controlled by the user name with which the network user name is associated.
- In BusinessObjects, the AD (Windows) user name is the normal user name and thus equal to the network user name. To have access to Maconomy data, you create an alias for that user name. This alias is equal to the user name (**NameOfUser**) in Maconomy. When you log in to the network, log-in is also automatically performed in BusinessObjects using the user name. Access to the Maconomy data is via the alias that matches the user name (**NameOfUser**) in Maconomy.

The following figure illustrates this.



Example

- In Maconomy, Anders Hansen uses **AH** as the network user name (and thus also AD log-in).
- Anders Hansen logs in to the network and automatically logs in to Maconomy as **AH**.

This gives Anders Hansen access to all of the Maconomy data that his user name is defined to have access to.

- When opening WebIntelligence in BusinessObjects, Anders Hansen is automatically logged in as **AH**.
- The BusinessObjects user **AH** has the alias Anders Hansen. Therefore, the user has access to all of the Maconomy data that Anders Hansen is defined to have access to.



With multi-user roles, Maconomy passes the login name as the user name.

Active Desktop and Maconomy Configurations

Users must exist as AD (Windows) users on the domain. The mapping in Maconomy must be set up properly so that each Maconomy user has his or her AD (Windows domain) user name specified in the **Network Username** field in the Users workspace in Maconomy.

For example, the person **Anders Hansen** might have the user name **AHA** on the domain. The Network user name for the Maconomy user **Anders Hansen** should therefore be filled in as **AHA**.

USync

You can use the USync tool to create users, user groups, and user aliases in BusinessObjects. USync creates BusinessObjects users and groups that correspond to the users in the Maconomy system. You can configure USync to create only users for which certain criteria are met.

USync can also remove BusinessObjects users or groups. This is convenient if users and groups have been removed from Maconomy.

Use the USync tool to complete the following tasks:

- Create users and groups in BusinessObjects that correspond to the ones that are defined in Maconomy. This allows users to access Maconomy data when running reports.
- Create aliases for each user so that, when logged in using another name by means of SSO, users can still access data.
- Synchronize users and groups for a tenant in a multitenant environment.

It is assumed that both Maconomy and BusinessObjects are set up for SSO.

Install USync

To install and prepare the USync tool:

1. Log in to the Maconomy server system.
2. Start MConfig and select the appropriate Maconomy application.
3. Click **Web products** and select the web server.
4. Click **OK** and apply the change with MConfig.
5. On the Web Products screen, enable **Web Services**.
6. Download the file **USync.zip** from the download server:

<\\d\\applications\\Released\\BPM\\Tools\\USync\\BO 4.2\\>

7. Extract the zip file to a folder on the server where BusinessObjects is installed. Make sure that both the USync.jar file and the “external” folder are within the same folder.

Create Users and Groups

To transfer users and groups from Maconomy with USync:

1. Log in to the server on which BusinessObjects is installed.
2. Open a command prompt.
3. Run the USync java tool and enter the following parameters in the exact sequence as listed:
 - **<Maconomy administrator username>** – Enter the username of the Maconomy administrator to access the Web Service.
 - **<Maconomy administrator password>** – Enter the password of the Maconomy administrator to access the Web Service.
 - **<URL to MaconomyWS executable on web server>** – Enter the Maconomy web service URL from which USync derives the list of users to create in BusinessObjects.
 - **<BO username>** – Enter the username of the BusinessObjects user that has access to view, create, modify, and delete users in the CMS.
 - **<BO password>** – Enter the password of the BusinessObjects user that have the rights to view, create, modify and delete users in the CMS.
 - **<BO Server name>** - Enter the BusinessObjects server where users are created.
 - **<BO Authentication Type>** – Enter the authentication type that USync uses to log in the provided BO user above. It is recommended to use **secEnterprise**.
 - **<Log level>** – Set the value to **100** to show the minimum amount of information in the logs or to **500** to show a detailed trace of information.
 - **<Path and file name of log file>** – If there is no log file, the tool creates a new log file. If a log file already exists, the tool appends the logs to it. Note that USync does not create folders.
 - **<Delete-user-data (true/false)>** – This determines whether to allow USync to automatically delete a user in BusinessObjects that no longer matches with a user in Maconomy.
 - **<Create named BO users (true/false)>** – This determines the license type used to create the users. Set this to **true** to create named users (one license required per user) or **false** to create concurrent users (number of license pertains to the number of users that can login at the same time, no limit on the number of users that can exist in the CMS)
 - **<Create AD aliases in BO (true/false)>** – This determines whether BusinessObjects requires the configuration of the Windows AD plugin. Set this to **true** to automatically assign an alias to users that exists in Windows Active Directory.
 - **<Domain name used for AD alias creation>** – Enter the combined prefix and extension of the domain name used for AD alias creation (for example, trifolium.com). This is only necessary if the “Create AD aliases in BO” parameter is set to **true**.
 - **<Default password for new BO users>** – Enter a default password that all new created BusinessObjects users can use. This is only used for Enterprise authentication.
 - **<Passwords never expire (true/false)>** – To determine the expiration of passwords, enter **true** to ensure the user’s password will never expire. If you enter **false**, the user’s password expires according to the configured user restriction in **CMC » Authentication » Enterprise**. By default, this parameter’s value is set to **false**.

- **<Must change password (true/false)>** – To determine whether the user must change the default password when first logging in, enter **true** to force users to change password on first log in. Note that you cannot set this parameter to **true** if the “Can’t change password” parameter is also set to **true**.
- **<Can’t change password (true/false)>** – To determine whether who can set passwords, enter **true** to allow only the system administrators to set passwords. Note that you cannot set this parameter to **true** if the “Must change password” parameter is also set to **true**.
- **<Whitelisted group>** – Use this parameter to determine which users should not be deleted by USync when the “delete-user-data” parameter is set to **true**. Leave this blank if no group needs to be whitelisted.
- **<Allow update of existing BO users>** – This parameter controls whether the properties of an existing user in BusinessObjects is updated by USync. By default, this parameter’s value is set to **false**.

For example, if you enter:

```
java -jar USync.jar "Administrator" "123456" "http://BPMServer:20001/cgi-  
bin/Maconomy/MaconomyWS.w15p2mc.US_MCS.exe/" "Administrator" "ppu"  
"macsrv.trifolium.com" "secEnterprise" "100" "C:\temp\usync.log" "false"  
"false" "true" "trifolium.com" "1234-Pass" "true" "false" "false" ""  
"true"
```

This does the following:

- Creates users and groups that correspond to users and groups that are set up in Maconomy. If only certain users are wanted, you can define criteria for them.



See [Configuring a Tenant in a Multitenant Environment \(Optional Installation\)](#)

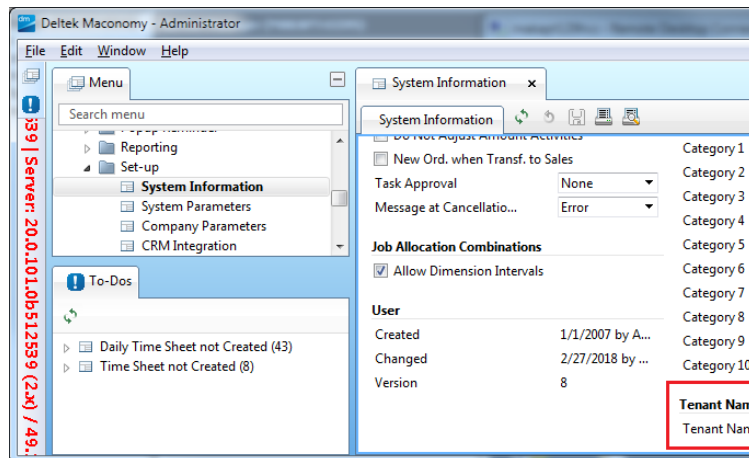
Multitenancy enables you to host multiple clients on one server where each client has their own access sites and properties. These additional steps are optional and not part of the Usync default installation.

The setup of multitenancy includes the following steps:

- Tenant configuration in the Maconomy Workspace client.
- Set up corresponding tenant in BusinessObjects server.
- Synchronize users using Usync.

Set up a Tenant Name in Maconomy:

1. Open the **System Information** single dialog workspace.
2. Scroll down to the Tenant Name island and enter a unique name in the **Tenant Name** field.



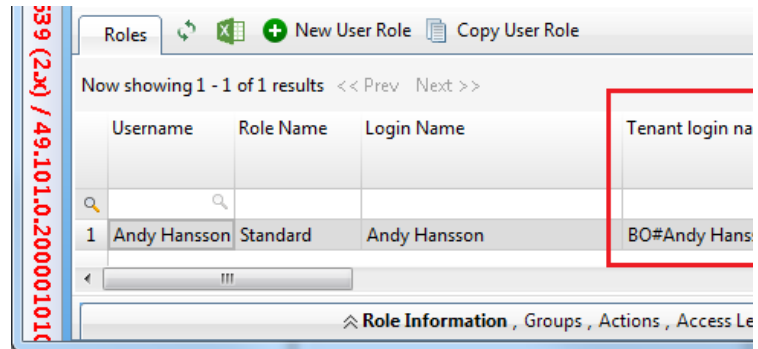
Note: To check if a tenant name is already in use, go to BusinessObjects CMC » Multitenancy.

3. Click **Save**.

Validate the tenant name in Maconomy:

1. Log in to the Maconomy Workspace Client with the necessary rights to access system setup, preferably as Administrator.
2. Open the **Users** workspace (Setup » Users) and expand the **User Information** tab.
3. Add the **Tenant Name** column to the Roles tab.
 - a. Right-click any column on the Roles tab and click **Customize columns**.
 - b. In the Available Columns section, select **Tenant Login Name**.

- c. Click **Add** and move the column up or down, depending on the desired location.
 - d. Click **OK**.
4. In the Tenant Login Name column, verify that the tenant name is prefixed in the login name with the format **tenantName#LoginName**.



Register tenant with BusinessObjects 4.2 Multitenancy Management Tool (Windows)

BusinessObjects 4.2 Business Intelligence Platform comes pre-installed with the Multitenancy Management Tool (MTM). This tool handles the registration of a tenant and other configurations controlled via a template definition file.



[Refer to the SAP Multitenancy Guide for more information.](#)

To define MTM properties:

1. Open the **tenant_template_def.properties** file in a text editing application. The file is located in the same directory as the BusinessObjects 4.2 Multitenancy Management Tool.
Note: The default location and file name is <InstallDir>\SAP BusinessObjects Enterprise XI 4.0\java\apps\multitenancyManager\jars\multitenancymanager.jar.
2. In the **tenant_template_def.properties** file:
 - a. Add the desired tenant name to the tenantName parameter. For example, tenantName=XXX.
 - b. Add the mandatory login information:
 - cms
 - auth
 - user
 - pwd (Optional. If left blank, user is prompted for password to proceed.)

3. Save the file.

Run the MTM tool

To run the MTM tool:

1. Open a command prompt. It is recommended that you run this as Administrator to avoid permission conflicts.
2. Change the directory to the location of the multitencancymanager.jar file (<InstallDir>\SAP BusinessObjects Enterprise XI 4.0\java\apps\multitenancyManager\jars)
3. Run the following command:

```
java -jar multitencancymanager.jar -configFile
```

Verify the tenant is created successfully

1. Log in to the **Central Management Console**.
2. On the Multitenancy tab, verify the tenant name is listed in the **Name** column.

Synchronize users with USync:

1. Download the **USync.zip** from the dl server at \\dl\applications\Released\BPM\Tools\USync\BO 4.2 Multitenancy\.
2. Extract the zip files.
3. Open a command prompt (run as Administrator).
4. Change the directory to the location of the extracted zip file, **USync.jar**.
5. Run the command: **java -jar USync.jar** with the following parameters:

PARAMETER	VALUE
Maconomy Username	Maconomy Admin username
Maconomy Password	Maconomy Admin password
Web Service URL	MaconomyWS URL found in ..
BO Username	BO Admin username
BO Password	BO Admin password
CMS	BO Server
BO Authentication	secEnterprise, secWinAD, etc.
Log Level	0 = no message, 500 = debug
Log File Name	File for the log file including dir

Delete User Data	delete users that does not exist in Maconomy
Named Users	Boolean, true=named user or false=concurrent user
Create AD Aliases	Boolean, create AD Alias for SSO
AD	Domain used for AD Alias Creation
Default Password	Password assigned to created BO users
Passwords Never Expire	Boolean, user attribute
Must Change Password	Boolean, user attribute
Can't Change Password	Boolean, user attribute
White List Groups	Groups ignored by delete user data parameter
Allow Update	Allows USync to update existing users

Example:

```
C:\USync>java -jar USync.jar "Administrator" "MaconomyPassword"
omy/MaconomyWS.shortname.en_US.exe/" "Administrator" "BOPassword"
"C:\USync.log" "false" "true" "false" "" "DefaultPassword" "true"
```

6. When completed, verify that the users and groups are created in BusinessObjects CMC.
 - a. Log in to **Central Management Console**.
 - b. On the **Users and Groups** tab, verify both users and groups are prefixed with the tenant name.

Control which Users to Create.

- Creates aliases for these users to handle access control.
 - Does not remove existing users that are defined in BusinessObjects. The users that are created are in addition to the users that are already there.
 - Sets the default password of the new users to **1234-Pass**.
 - Uses the web server executable (a 15.0 sp 2 MCS system in the preceding example) to determine the Maconomy system that is used.
 - Stores the log output from USync in the file **C:\temp\usync.log**.
4. Open the Central Management Console and click **Groups** or **Users** to confirm that the synchronization succeeded.

For each user, you can see the group memberships on the Member of tab. For each group, you can see the members of the group on the Users tab. If you chose to create AD aliases, you can see them under each user in the lower part of the window.

Configuring a Tenant in a Multitenant Environment (Optional Installation)

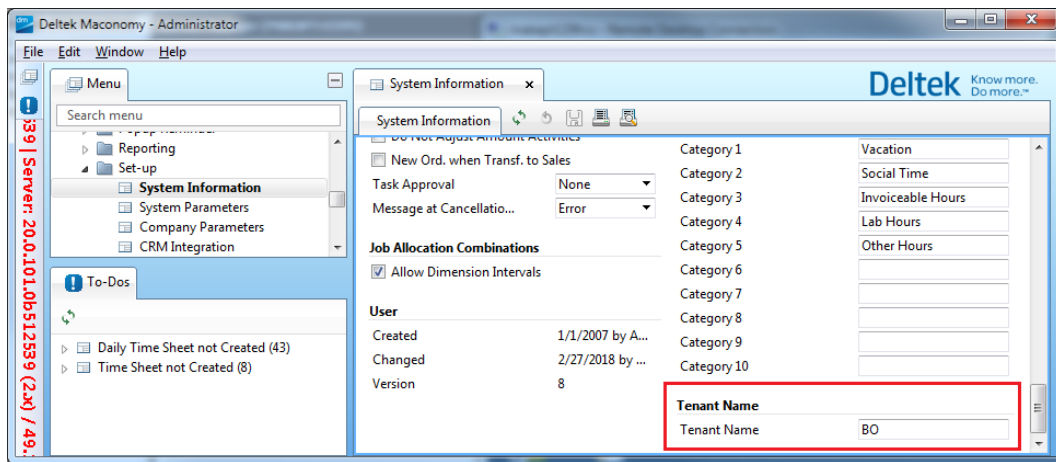
Multitenancy enables you to host multiple clients on one server where each client has their own access sites and properties. These additional steps are optional and not part of the Usync default installation.

The setup of multitenancy includes the following steps:

- Tenant configuration in the Maconomy Workspace client.
- Set up corresponding tenant in BusinessObjects server.
- Synchronize users using Usync.

Set up a Tenant Name in Maconomy:

4. Open the **System Information** single dialog workspace.
5. Scroll down to the Tenant Name island and enter a unique name in the **Tenant Name** field.

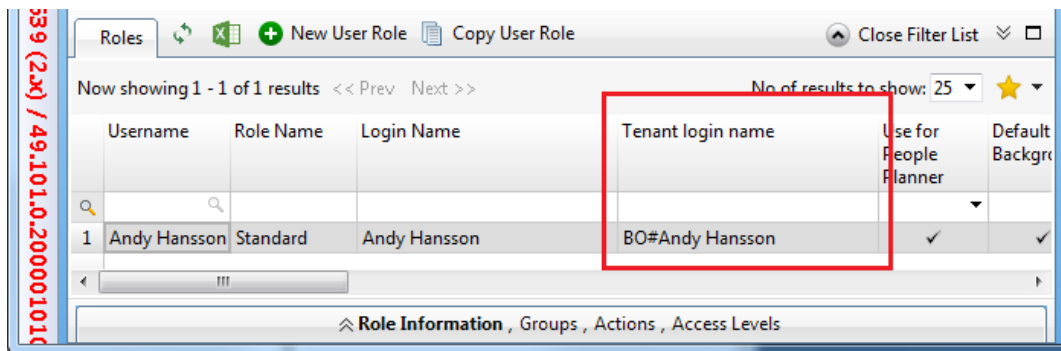


Note: To check if a tenant name is already in use, go to BusinessObjects CMC » Multitenancy.

6. Click **Save**.

Validate the tenant name in Maconomy:

5. Log in to the Maconomy Workspace Client with the necessary rights to access system setup, preferably as Administrator.
6. Open the **Users** workspace (Setup » Users) and expand the **User Information** tab.
7. Add the **Tenant Name** column to the Roles tab.
 - a. Right-click any column on the Roles tab and click **Customize columns**.
 - b. In the Available Columns section, select **Tenant Login Name**.
 - c. Click **Add** and move the column up or down, depending on the desired location.
 - d. Click **OK**.
8. In the Tenant Login Name column, verify that the tenant name is prefixed in the login name with the format **tenantName#LoginName**.



Register tenant with BusinessObjects 4.2 Multitenancy Management Tool (Windows)

BusinessObjects 4.2 Business Intelligence Platform comes pre-installed with the Multitenancy Management Tool (MTM). This tool handles the registration of a tenant and other configurations controlled via a template definition file.



Refer to the [SAP Multitenancy Guide](#) for more information.

To define MTM properties:

4. Open the **tenant_template_def.properties** file in a text editing application. The file is located in the same directory as the BusinessObjects 4.2 Multitenancy Management Tool.

Note: The default location and file name is <InstallDir>\SAP BusinessObjects Enterprise XI 4.0\java\apps\multitenancyManager\jars\multitenancymanager.jar.

5. In the **tenant_template_def.properties** file:
 - c. Add the desired tenant name to the tenantName parameter. For example, tenantName=XXX.
 - d. Add the mandatory login information:
 - cms
 - auth
 - user
 - pwd (Optional. If left blank, user is prompted for password to proceed.)
6. Save the file.

Run the MTM tool

To run the MTM tool:

4. Open a command prompt. It is recommended that you run this as Administrator to avoid permission conflicts.
5. Change the directory to the location of the multitenancymanager.jar file (<InstallDir>\SAP BusinessObjects Enterprise XI 4.0\java\apps\multitenancyManager\jars)
6. Run the following command:

```
java -jar multitenancymanager.jar -configFile
```

Verify the tenant is created successfully

3. Log in to the **Central Management Console**.
4. On the Multitenancy tab, verify the tenant name is listed in the **Name** column.

Synchronize users with USync:

7. Download the **USync.zip** from the dl server at
\\dl\applications\Released\BPM\Tools\USync\BO 4.2 Multitenancy\.
8. Extract the zip files.
9. Open a command prompt (run as Administrator).
10. Change the directory to the location of the extracted zip file, **USync.jar**.
11. Run the command: **java -jar USync.jar** with the following parameters:

PARAMETER	VALUE
Maconomy Username	Maconomy Admin username
Maconomy Password	Maconomy Admin password
Web Service URL	MaconomyWS URL found in ..\maconomy\index.html
BO Username	BO Admin username
BO Password	BO Admin password
CMS	BO Server
BO Authentication	secEnterprise, secWinAD, etc.
Log Level	0 = no message, 500 = debug mode
Log File Name	File for the log file including directory
Delete User Data	delete users that does not exist in Maconomy
Named Users	Boolean, true=named user or false=concurrent user
Create AD Aliases	Boolean, create AD Alias for SSO
AD	Domain used for AD Alias Creation
Default Password	Password assigned to created BO users
Passwords Never Expire	Boolean, user attribute
Must Change Password	Boolean, user attribute
Can't Change Password	Boolean, user attribute
White List Groups	Groups ignored by delete user data parameter

Allow Update	Allows USync to update existing users
--------------	---------------------------------------

Example:

```
C:\USync>java -jar USync.jar "Administrator" "MaconomyPassword" "http://localhost:20003/cgi-bin/Maconomy/MaconomyWS.shortname.en_US.exe/" "Administrator" "BOPassword" "BOServer" "secEnterprise" "500" "C:\USync.log" "false" "true" "false" "" "DefaultPassword" "true" "false" "false" "SysAdmins" "false"
```

12. When completed, verify that the users and groups are created in BusinessObjects CMC.
 - a. Log in to **Central Management Console**.
 - b. On the **Users and Groups** tab, verify both users and groups are prefixed with the tenant name.

Control which Users to Create

To create only specific users, or users that satisfy certain conditions, configure USync.

To configure USync, follow these steps:

1. In the Maconomy web server folder **\MaconomyWS\Services\Standard** locate the **USyncSQL.txt** file.
2. Edit the file so that it contains an SQL-like expression that selects the users.

Examples

Example 1: Select Users by Means of Popup 1

You want to control which user to import by using Popup 1 on the employee who is associated with the user. If you set up this pop-up with one value, BusinessObjects, so that it either has this value or is blank on each employee, you can insert the following additional condition in the WHERE clause for the import of user data and role membership data.

```
0 = (select EmployeePopup1 from Employee
     where EmployeeNumber = UserInformation.EmployeeNumber)
```

If there is no employee on the user, the selected value is **null**. If Popup 1 is blank on the employee, the selected value is **-1**.

Example 2: Select Users Based on Roles

You want to import only those users who have certain roles. In this case, use the following additional condition:

```
EXISTS (SELECT 'OK' FROM EXUserDialogGroup
        WHERE NameOfUser = UserInformation.NameOfUser
        AND GroupName IN ('FinancialManagement', 'LineManagement'))
```

In an MAS solution, this imports 19 users, including Andy Polansky, Lisa Welsh, and Sue French. In the MCS solution you could change the restriction on the group name to **GroupName IN (FinancialManagement, DepartmentManagement, AccountManagement)**, and then you would get 17 users, including Edward Powers and Micho Spring.

Error Handling

The output message may contain errors.

- If the output message contains:

- “This user does not exist” — You did not enter a valid Maconomy user name.
- “Password is not correct” — You did not enter a correct password for the Maconomy user.
- “Enterprise authentication could not log you on” — There is a problem with the BusinessObjects username or password.
- If you cannot open the **http://localhost/index.html** page, there may be an error in the global parameters in M-Config. Open M-Config, click the **Global settings** button and make sure that the **Export HTML index file to** field has the correct value (for example: C:\Apache\Apache2\htdocs).

(404) Not Found

- If the output message contains “(404) Not Found,” there is a problem with the URL in the **Web service URL** field. This is also the case if the output message refers to SAXParseException, ConnectException, UnknownHostException, or “unknown protocol.”

One possible reason for the 404 error could be that the Webserver URL in M-Config is incorrect.

To fix the 404 error, follow these steps:

1. Open M-Config.
2. Select the relevant application.
3. Click **Web products**.
4. Select the appropriate web server.
5. Click **Web server parameters** and make sure that the **Webserver URL** (host and port) field has the correct value.

For example, if the installation uses a virtual web server, the field should be **http://** followed by the name of the server, followed by the virtual web server port number (separated by a colon), with a / (slash) at the end. If you make a change in M-Config, you may need to restart the web daemon before the changes take effect.

Assign Report and Universe Rights

Before you perform this procedure, you must consider which users or groups should be given access to which reports and universes.

To manually set up access rights in BusinessObjects, follow these steps:

1. Open the Central Management Console.
2. Click **Folders** and then locate the reports in the Maconomy folder.
3. For each report, set up the access rights by clicking on the report and opening the Rights tab.
4. Make sure that the rights for the group **Everyone** are set to **No Access**, click **Add/Remove** to insert a line (for example, a new group), and then click **OK**.
5. Change the rights to a different setting, for example, **View On Demand**.



You must grant each universe and connection to the specific groups of users. This may take some time if there are many groups and many reports.

It is recommended that you assign rights to groups (containing users), rather than directly to users.

Configure Logon Token in BusinessObjects

With the Dashboard Components iFrames installed, an “obsolete token error” might occur if the token that is used for signing in to BusinessObjects has expired.

There are two ways to avoid this error, both of which involve changing the files that are deployed in BusinessObjects:

- Increase available document instances
- Prevent users from using outdated tokens

Increase Available Document Instances

To increase the number of document instances that are available on the system, modify the parameters in the `webi.properties` file.

To modify the `webi.properties` file appropriately, follow these steps:

1. Locate the `webi.properties` file at `C:\Program Files(x86)\Business Objects\Tomcat55\webapps\AnalyticalReporting\WEB-INF\classes\webi.properties`.
2. Uncomment the `WID_FAILOVER_SIZE=11` and `WID_STORAGE_TOKEN_STACK_SIZE=11`.
3. Save and close the file.
4. Restart the web application server.

Prevent Users from Using Outdated Tokens

To prevent users from using outdated tokens, set the **`logontoken.enabled`** parameter in the `web.xml` file.

To modify the `web.xml` file appropriately, follow these steps:

1. Locate the `web.xml` file at `C:\Program Files(x86)\Business Objects\Tomcat55\webapps\InfoViewApp\WEB-INF\web.xml`.
2. Find the **`logontoken`** phrase and change the parameter value from `true` to `false`.

```
<context-param>
  <param-name>logontoken.enabled</param-name>
  <param-value>>false</param-value>
</context-param>
```

3. Save and close the file.
4. Restart the web application server to apply the changes.

Localization

In BPM, you perform tasks for localization using the BusinessObjects Translation Manager tool, which is part of BOE. The Translation Manager uses the standard XLIFF XML-schema that defines the word or term translation between all standard languages. You cannot create languages, but you can maintain several versions that represent different dialects. For example, for the language “English,” there are different kinds (dialects) such as US English and UK English.

You can localize both universes and reports.

This section includes the following material and procedures:

- BPM translator tool overview
- Perform a translation

BPM Translator Tool Overview

Maconomy uses simple text files that are called dictionaries that contain word-to-word translations. These dictionaries are translated to XLIFF format using BPM’s Translator tool.

The Translator tool takes two input parameters:

- A Maconomy dictionary
- Initial XLIFF file

The Maconomy dictionary is a text file that contains word combinations (terms) of items such as universe object names and descriptions. The dictionary associates these terms with corresponding terms in another language. The terms in the two languages are tab-separated. The Translator tool recognizes space symbols as part of the terms so that, for example, “good night” can be translated into “buenas noches.”

The Translator tool takes the Maconomy dictionary and an initial XLIFF-file and generates another XLIFF-file by substituting dictionary terms that occur before the tab symbol with dictionary terms that occur after the tab symbol. The initial XLIFF-file is generated from the universe and reports and thus contains all of the terms that are necessary for the translation.

Perform a Translation

This section describes how to perform a translation. To perform a translation, you must:

- Generate the initial XLIFF file
- Modify the initial XLIFF file
- Perform the translation

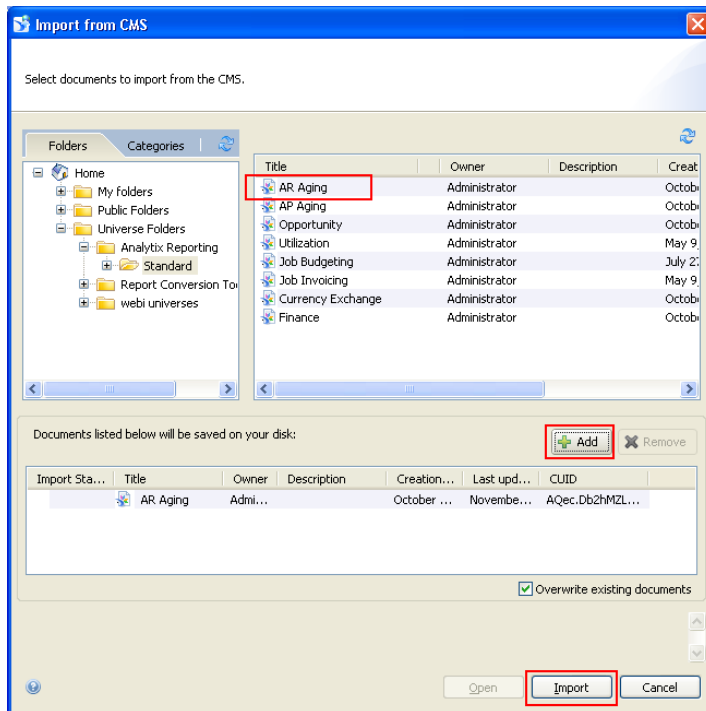
Generate the Initial XLIF File

To generate the initial XLIF file, follow these steps:

1. Run the BusinessObjects Translation Manager.
2. Click **File » Import from CMS**.
3. Browse to and select the universe to be localized, and then click **Add**.

4. Click **Import**.

The following example shows selections for steps 3 and 4.

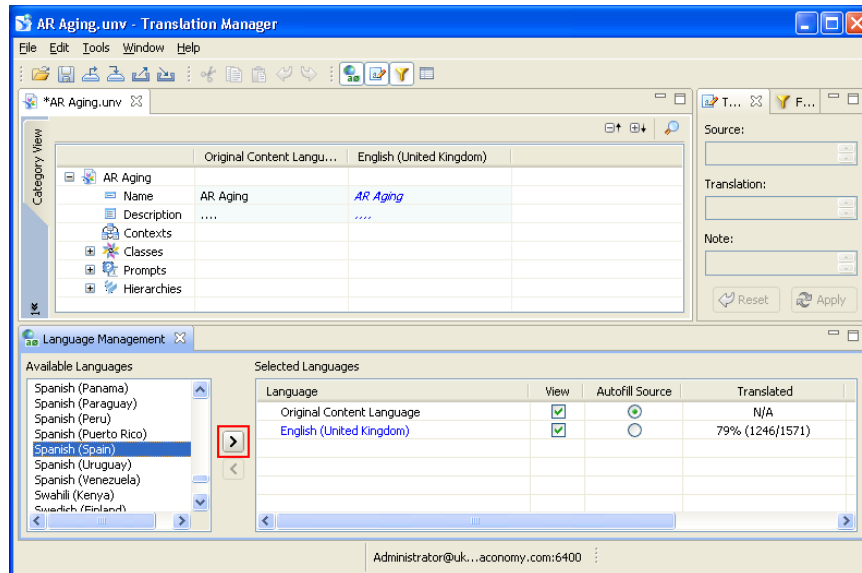


5. Click **Add**.

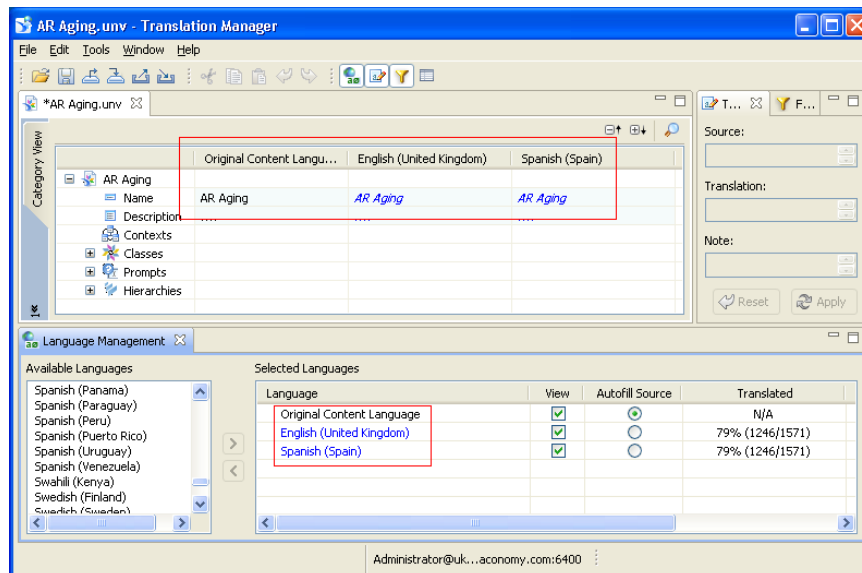
6. On the Language Management tab, select the **From** and **To** languages.

The original language is already selected. You must select two additional languages.

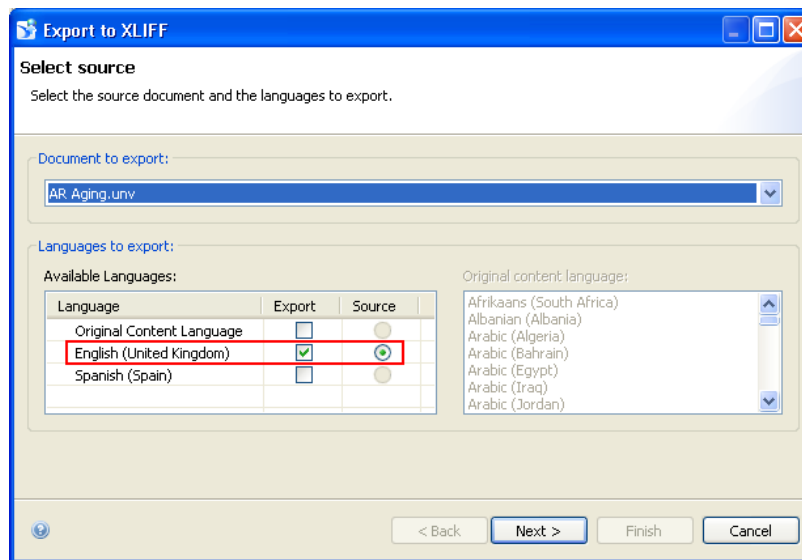
- **Original language** — Refers to the language of the universe (Maconomy W language). This is selected from the start.
- **From-language** — The language to which the Maconomy W language refers in XLIF. This is usually English (United Kingdom), and terms are provided in UK English by default.
- **To-language** — The language into which you want to translate, such as Spanish.



After you have designated the languages, the following is displayed.



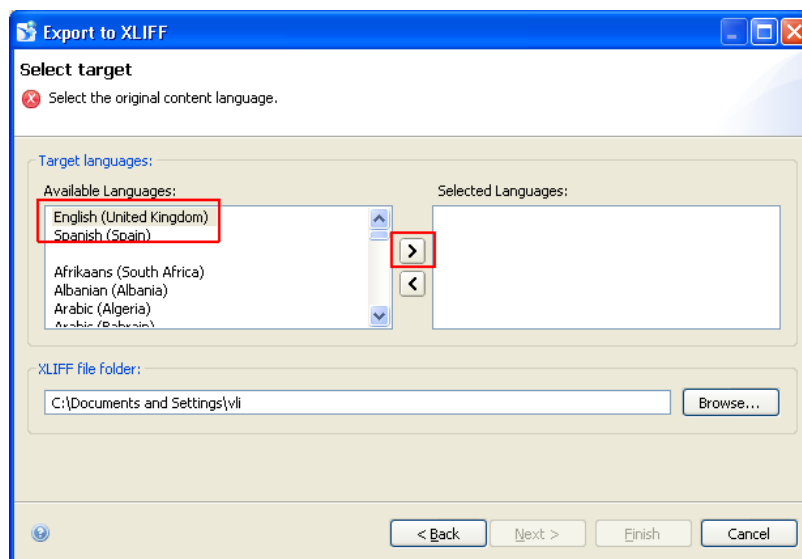
7. Click **File » Export to XLIFF**.



8. Select **Source** to designate one of the languages as the language in which the universe is provided. In the preceding example, it is English (United Kingdom). The source should be the same as the language from the first **Dictionary-file** column.

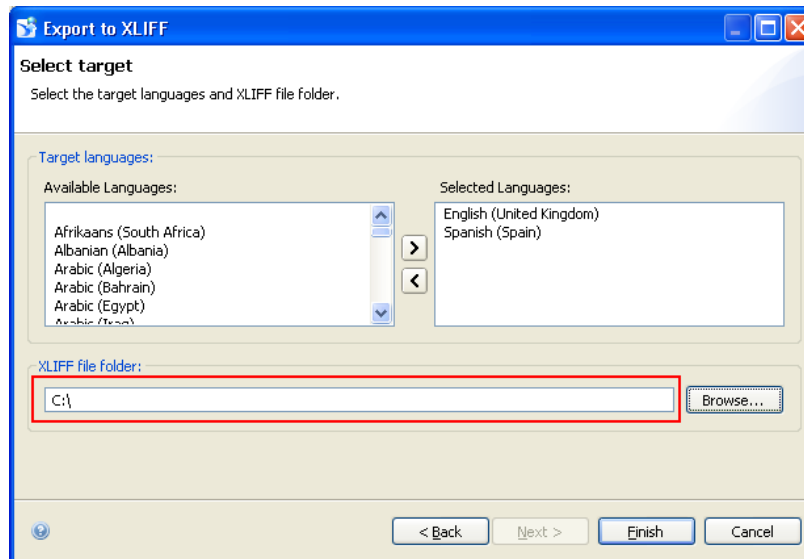
9. Click **Next**.

10. From the **Available Languages** list, select the **From** language for the XLIFF file.



11. Click the arrow to move the languages to the **Selected Languages** list.

These are the **To** languages for translation.



12. Click **Finish**.

Two files are available in the XLIFF file folder:

- AR Aging.unv_en_GB_en_GB.xlf
- AR Aging.unv_en_GB_es_ES.xlf

The file that has different languages in its name should be the initial XLIFF file that is used as one of the tool's input files.

Modify the Initial XLIFF File

The initial XLIFF file contains all of the terms of the universe; however, you must incorporate the translation principles of the Maconomy dictionary. Therefore, you should apply this tool to modify the initial XLIFF file before continuing.

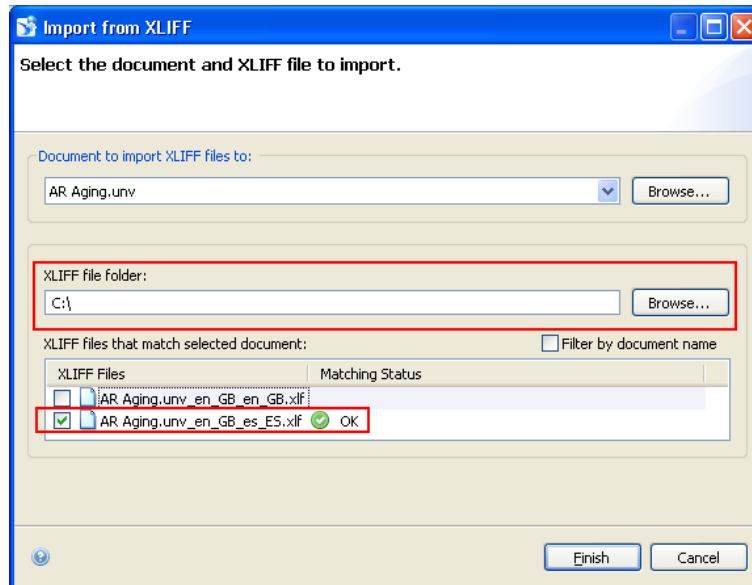


Refer to the **readme.txt** file that is provided with the tool for translating the Maconomy dictionary file into XLIFF for information about how to run that tool.

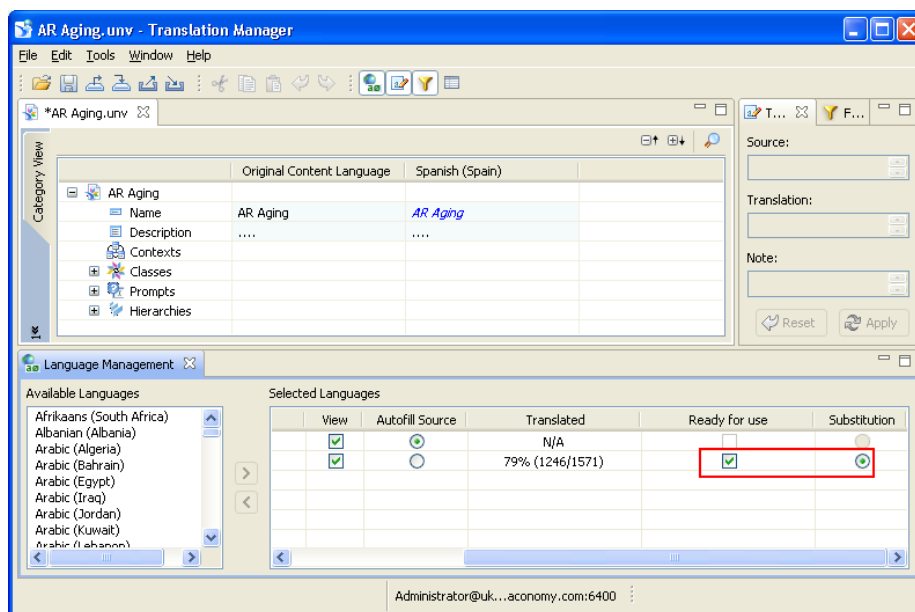
Perform the Translation

To perform the translation, follow these steps:

1. Click **File » Import from CMS** and import the universe to the Translation Manager.
2. Click **File » Import from XLIFF** and import the output file created in the previous steps.



3. After you import the XLIFF file, select the second language in the list as **Ready for use**.



4. Export the universe to the CMS and run WebI to validate that the translation has been applied.



It is recommended that you export a copy to another location, so that future upgrades of the standard delivery do not overwrite the changes. See the *Business Performance Management Reporting Customization and Upgrade Guide*.

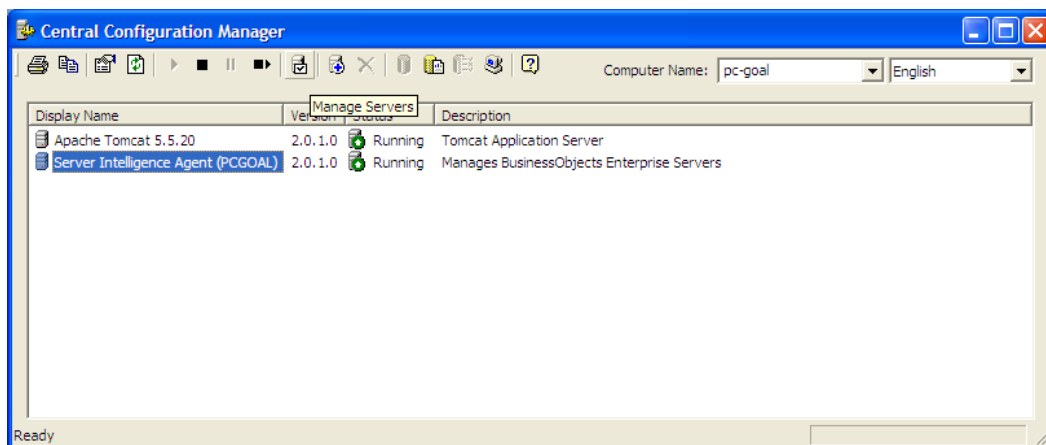
Handling BusinessObjects Services

The standard BusinessObjects Enterprise installation has several services that are set up to start automatically. For this reason, the server startup is slower. However, if you do not need all of the services, the following information explains how to change the startup type on some of them, including:

- Changing the start-up type
- Removing Performance Manager

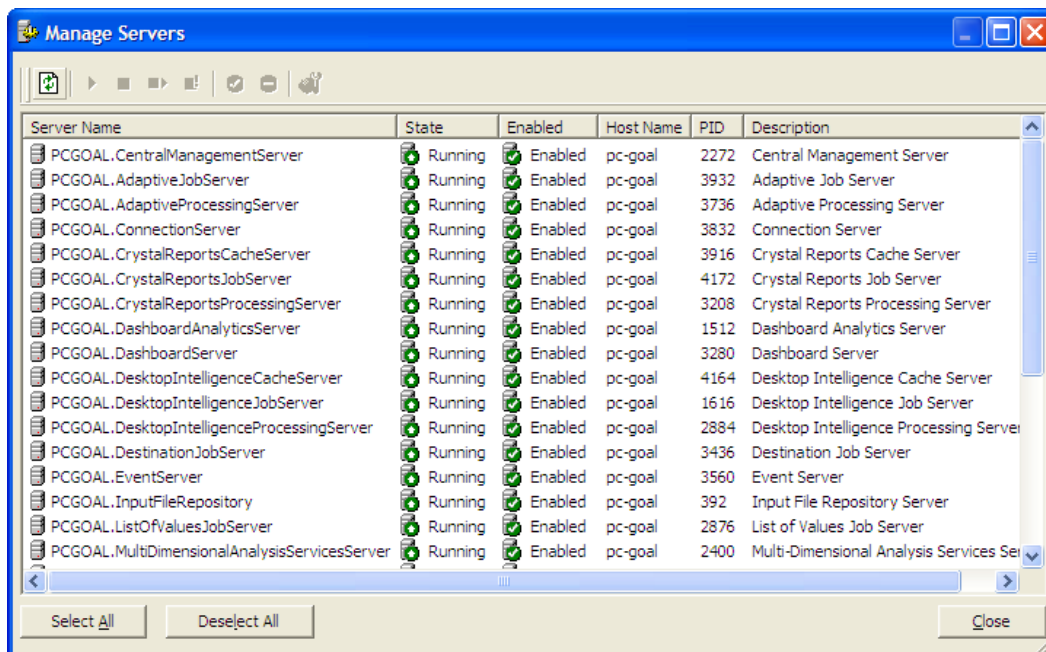
To change the start-up type, follow these steps:

1. Click the Windows **Start** button, then click **All programs » SAP Business Intelligence » SAP BusinessObjects BI platform 4 » Central Configuration Manager » Manage Servers**.



2. Log in to the CMS.

A list of the BusinessObjects servers is displayed.

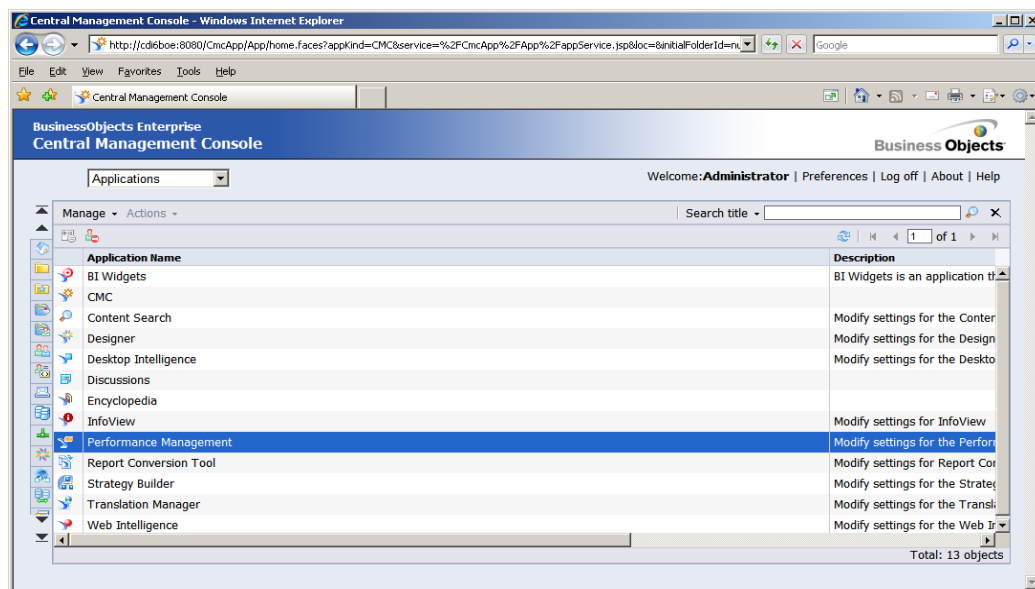


3. You might want to stop the following list of servers and change their startup type to **Manual** in their properties:
 - Crystal Reports Cache Server
 - Crystal Reports Job Server
 - Crystal Reports Processing Server
 - Desktop Intelligence Cache Server
 - Desktop Intelligence Job Server
 - Desktop Intelligence Processing Server

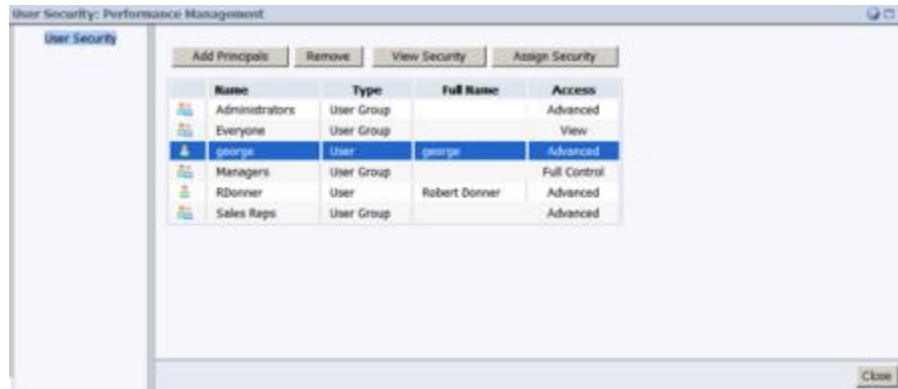
Remove Performance Manager

To restrict access to Performance Manager, follow these steps:

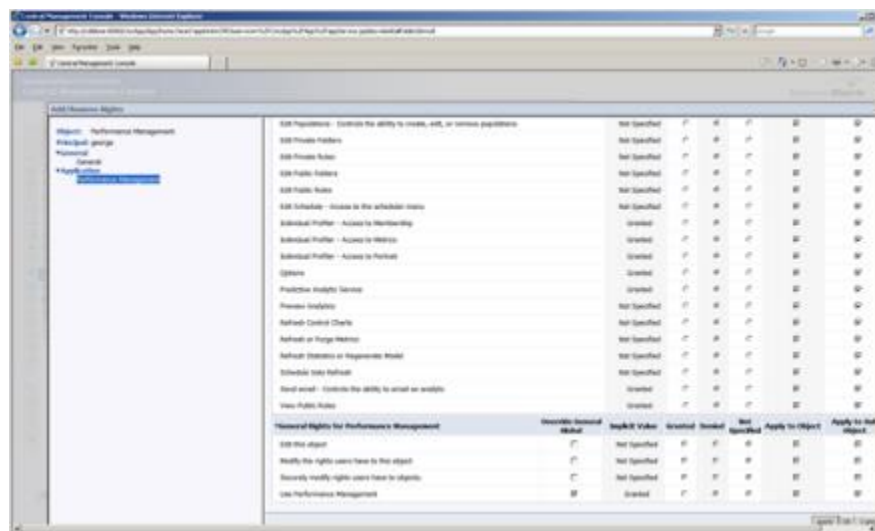
1. Click the Windows **Start** button, then click **All programs » SAP Business Intelligence » SAP BusinessObjects BI platform 4 » SAP » BusinessObjects Enterprise Central Management Console**.
2. Click the Applications tab.



3. Right-click **Performance Management**.



4. Choose a group and click **Assign Security**.
5. Click the Advanced tab, and then click **add/remove rights**.



6. Clear all options, including **Use Performance Management**.
7. Click **Apply** and then click **OK** to save your entries.

Use a Non-Standard Web Server Port

If the port specified for the Tomcat server is already in use, you cannot log in to InfoView. You must reconfigure the Tomcat server by changing the port number in ...\\Tomcat\\conf\\server.xml under the Connector tag and restart the Apache Tomcat service.

To avoid this issue, follow these steps:

1. Open a Command Prompt and enter the following:

```
netstat -a > netstat.txt
```

This displays an **etstat.txt** text file in the current directory that contains, among other information, a list of the port numbers that are currently in use.

2. Open this text file and search for **8080**.
3. If **8080** is already in use, insert a unique number and use that port number, instead of 8080, throughout this section.

Set Templates for Web Intelligence

You must change the template for WebI when there is a new document. This is not an option for existing documents. The Maconomy standards are implemented in the defaultConfig.xml released file.

To set templates for WebI, follow these steps:

1. Make a backup copy of the **AnalyticalReporting.war** file from (default) **C:\Program Files\Business Objects\BusinessObjects Enterprise 12.0\java\applications**.
2. Open the **AnalyticalReporting.war** file and replace the three versions of **defaultConfig.xml** with the changed versions. Note the original paths:
 - webiApplet\AppletConfig\defaultConfig.xml
 - webiApplet\AppletConfig\AppletConfig\defaultConfig.xml
 - WEB-INF\classes\defaultConfig.xml
3. From services, **Stop tomcat**.
4. From a command-line prompt, change the current directory to **C:\Program Files\Business Objects\deployment**.
5. Enter the command **wdeploy tomcat55 predeployall**.
6. If no errors are displayed, enter the command **wdeploy tomcat55 deployall**.
7. From services, **Start tomcat**.
8. Create a WebI document to check the template's performance.
9. Restart the server if necessary.

Enabling Cache and Pre-Load of Cache in ETL

Enabling cache on ETL effectively improves the load speed of both incremental and full loads in the data warehouse. It stores the values of keys that had been looked up at least once and returns these values the next time that these are looked up again. This reduces the need to do a database call every time a lookup step is processed.





Cache uses memory to store the looked-up key, and you risk **running out of memory** when it is enabled on very large tables.

You can enable cache:

- Manually
- Using an SQL Script

Enable Caching Manually

To enable caching manually, follow these steps:

1. Open the transformations that contain dimensional  or database lookup  steps.
2. Right-click the lookup step and select **Edit Step** or double click it.
3. Select the **Enable the cache?** check box.

4. If **Pre-load the cache?** is enabled, select it as well. This check box is disabled if the **Update the dimension?** check box is selected.
5. Set **Cache size in rows** to **0** to enable caching of all rows.
6. Click **OK** to apply changes.
7. Apply these changes to all other lookup steps except **Pre-load the cache?** on **TASK_ID** because this is typically a very large table and will result in an out of memory error. Set **Cache size in rows** to **1** for this lookup and then append **ORDER BY TASK_LIST, TASK_NAME** on the SQL statement of the Table Input step. TASK_ID lookup step is present on the following transformations:
 - Job Entry
 - Purchase Order Line
 - Job Invoice Line
 - Budget Entry
 - Finance Entry
 - Job Budget Line

Enable Caching Using an SQL Script

Another way to enable the cache and pre-load the cache is by using an SQL script.

To enable caching using an SQL script, complete the following steps:

1. Log in to the database repository for your ETL and run the following SQL statements.

```
-- enables cache for Dimensional Lookup steps except TASK_ID
UPDATE R_STEP_ATTRIBUTE
SET VALUE_NUM = 0, VALUE_STR = NULL
WHERE ID_STEP_ATTRIBUTE IN (
SELECT ID_STEP_ATTRIBUTE
FROM R_STEP_ATTRIBUTE
WHERE ID_STEP IN (
SELECT ID_STEP
FROM R_STEP
WHERE ID_STEP_TYPE IN
(SELECT ID_STEP_TYPE
FROM R_STEP_TYPE
WHERE CODE IN ('DimensionLookup')) AND
NAME <> 'TASK_ID') AND
CODE IN ('cache_size')
);

--enables pre-load cache for Dimensional Lookups except TASK_ID
UPDATE R_STEP_ATTRIBUTE
SET VALUE_STR = 'Y'
WHERE ID_STEP_ATTRIBUTE IN (
SELECT ID_STEP_ATTRIBUTE
FROM R_STEP_ATTRIBUTE
WHERE ID_STEP IN (
SELECT ID_STEP
FROM R_STEP
WHERE ID_STEP_TYPE IN
(SELECT ID_STEP_TYPE
FROM R_STEP_TYPE
WHERE CODE IN ('DimensionLookup')) AND
NAME <> 'TASK_ID') AND
CODE IN ('preload_cache')
);

--set cache-size to 1 for Dimensional Lookup TASK_ID
UPDATE R_STEP_ATTRIBUTE
SET VALUE_NUM = 1, VALUE_STR = NULL
WHERE ID_STEP_ATTRIBUTE IN (
SELECT ID_STEP_ATTRIBUTE
FROM R_STEP_ATTRIBUTE
WHERE ID_STEP IN (
SELECT ID_STEP
FROM R_STEP
WHERE ID_STEP_TYPE IN
(SELECT ID_STEP_TYPE
FROM R_STEP_TYPE
WHERE CODE IN ('DimensionLookup')) AND
NAME = 'TASK_ID') AND
CODE IN ('cache_size')
);

--disables pre-load cache for TASK_ID Dimensional Lookup steps
UPDATE R_STEP_ATTRIBUTE
SET VALUE_NUM = 0, VALUE_STR = 'N'
WHERE ID_STEP_ATTRIBUTE IN (
SELECT ID_STEP_ATTRIBUTE
FROM R_STEP_ATTRIBUTE
```

```

WHERE ID_STEP IN (
SELECT ID_STEP
FROM R_STEP
WHERE ID_STEP_TYPE IN
(SELECT ID_STEP_TYPE
FROM R_STEP_TYPE
WHERE CODE IN ('DimensionLookup')) AND
NAME = 'TASK_ID') AND
CODE IN ('preload_cache')
);
--enables cache for Database Lookup Steps (VALUE_STR = 'Y')
UPDATE R_STEP_ATTRIBUTE
SET VALUE_STR = 'Y'
WHERE ID_STEP_ATTRIBUTE IN (
SELECT ID_STEP_ATTRIBUTE
FROM R_STEP_ATTRIBUTE
WHERE ID_STEP IN (
SELECT ID_STEP
FROM R_STEP
WHERE ID_STEP_TYPE IN
(SELECT ID_STEP_TYPE
FROM R_STEP_TYPE
WHERE CODE IN ('DBLookup')) AND
CODE IN ('cache')
);
--set cache size to 0 for Database Lookup Steps (VALUE_NUM = 0)
UPDATE R_STEP_ATTRIBUTE
SET VALUE_NUM = 0, VALUE_STR = NULL
WHERE ID_STEP_ATTRIBUTE IN (
SELECT ID_STEP_ATTRIBUTE
FROM R_STEP_ATTRIBUTE
WHERE ID_STEP IN (
SELECT ID_STEP
FROM R_STEP
WHERE ID_STEP_TYPE IN
(SELECT ID_STEP_TYPE
FROM R_STEP_TYPE
WHERE CODE IN ('DBLookup')) AND
CODE IN ('cache_size')
);
COMMIT;

```

After running the provided SQL statement, commit the changes. Then you must manually update transformations that contain TASK_ID (see step 7 on how manually enable cache.)

Servers with Low Memory (RAM)

Pentaho Data Integration 5.4 has a high memory consumption. This is due to Pentaho Data Integration 5.4 installation, as well as installing Tomcat 6 as a necessary component to run the Data Integration Server. However, it consumes a steadily increasing amount of memory, which could be detrimental to systems with low memory.

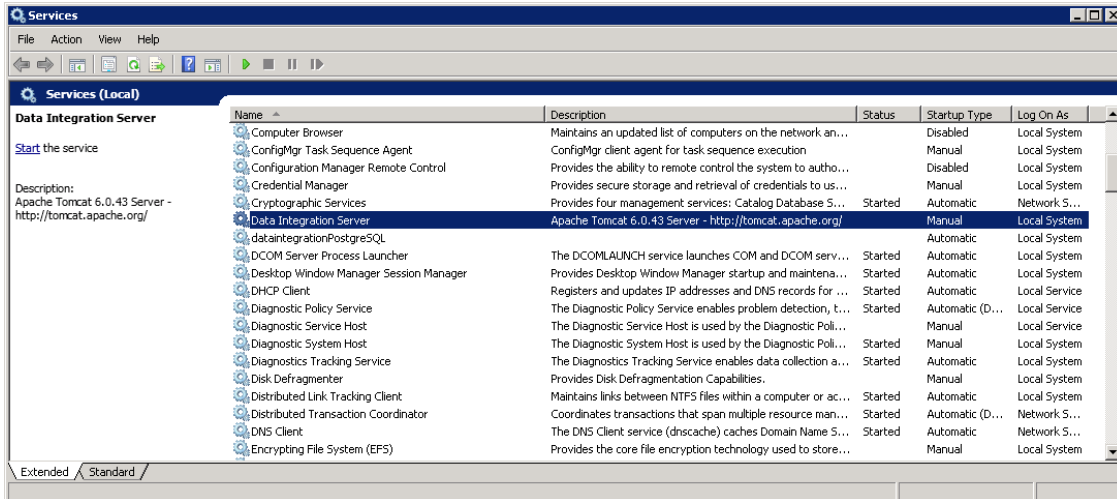
Data Integration Server is mainly used for scheduling, execution, security, and content management. Since Deltek currently uses a different method of scheduling ETL loads, you can disable it.



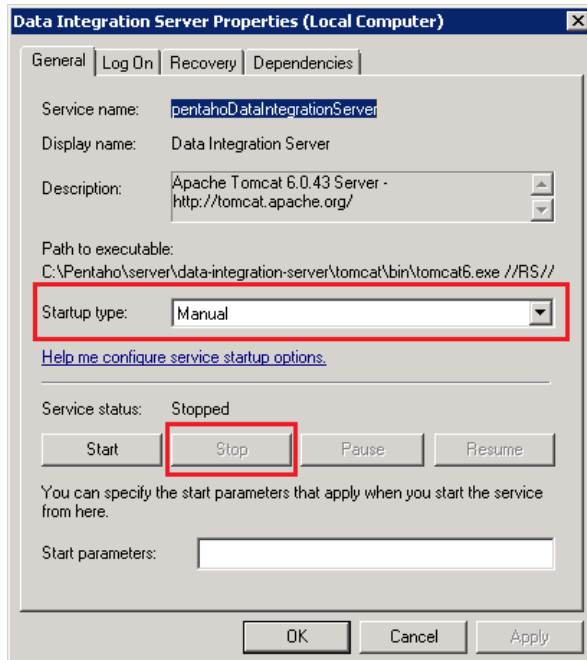
This process is optional and is only necessary for servers with low memory (RAM).

To disable Data Integration Server, complete the following steps:

1. Click **Start**, then type *Services.msc*.
2. The Services window is displayed. Locate a service called **Data Integration Server**.



3. Right-click and select **Properties**. The Data Integration Server Properties dialog is displayed.
4. In the **Startup type** field, change the selection to **Manual** so that the service does not run automatically when you restart the system.



5. Click **Stop** to disable the service, then **OK**.

Burst Publishing

Burst Publishing is the ability to schedule documents to refresh and then automatically distribute them out to receivers. The main benefit is that the recipients (Maconomy users) can get the refreshed documents automatically in their in boxes, and that the documents are only run once.

For information about how to set up burst publishing of documents in SAP BusinessObjects, see <http://scn.sap.com/docs/DOC-56056>

Materialized Views on Oracle

A materialized view on Oracle is a database view that is stored physically and provides a view on which indexes and keys can be defined. BPM Reporting uses one materialized view in the Job Information universe because the Maconomy transaction database lacks a table that combines job entries (JobEntry) with corresponding invoice lines (JobInvoiceLine).

This section describes how materialized views on Oracle work and how to manage them.

JobEntryJobInvoiceLinePV

The materialized view that is used in BPM Reporting is called JobEntryJobInvoiceLinePV. It consists of the following elements:

- Two view logs, one on JobEntry and one on JobInvoiceLine
- Materialized view JobEntryJobInvoiceLinePV
- EX view EXJobEntryJobInvoiceLinePV

When records change in the JobEntry table, the changes are recorded in the view log. Similarly, if records are inserted or deleted, changes are recorded in the JobInvoiceLine table.

The Materialized View

The materialized view is set to update on commit. This means that when a transaction changes, inserts, or deletes records in JobEntry or JobInvoiceLine, the changes that are recorded in the view logs are transferred as changes that update the materialized view. The view is designed to perform a fast refresh because only delta changes are considered; it is not the whole view that is updated. In addition, the view does not use the query rewrite mechanism in Oracle.

The EX View

The EX view is a database view that is on top of the materialized view. The EX view provides meaningful values for pop-up numbers (enumerated data types) and date values of data types (in addition to the string format).

For technical reasons, the date definitions are done in the materialized views, and only pop-up value fields are handled in the EX views (in other EX views, date fields are also handled in the EX views).

Explain the View Definition

This section provides the view definition file and explains what each statement does.

Statement/Section	Definition
ALTER SYSTEM SET "_mv_refresh_use_stats =TRUE"	This statement tells Oracle to use statistics when refreshing materialized views.
CREATE MATERIALIZED VIEW LOG ON JOBENTRY	This statement creates the view log on JobEntry.
WITH ROWID	The reference of ROWID is important because it is used for unique identification.
INCLUDING NEW VALUES; CREATE MATERIALIZED VIEW JOBENTRYJOBINVOICELINEPV	This statement creates the actual materialized view.
REFRESH ON COMMIT AS	This is the definition of "refresh on commit."
SELECT	This statement starts the select statement that defines the view.
-- Technical fields JOBENTRY.ROWID JOBENTRYROWID	Both parts of the union that make the select statement use the ROWID internally for unique identification.
,NULL JOBINVOICELINEROWID ,1 MARKER	This field is used to distinguish the upper and lower union parts.
-- Shared Dimensions ,JOBENTRY.INSTANCEKEY	This starts the field list.
CREATE VIEW EXJOBENTRYJOBINVOICELINEPV AS : SELECT INSTANCEKEY ,JOBNUMBER ,ENTRYNUMBER	This defines the EX view on the materialized view.

Check the Materialized View

Use the following select statements to check the view.

```
SELECT MVIEW_NAME, REFRESH_MODE, REFRESH_METHOD, LAST_REFRESH_TYPE,  
LAST_REFRESH_DATE FROM USER_MVIEWS;
```

This lists a record for the materialized view that is defined. The **last_refresh_date** provides the date when the view was last refreshed, and the other fields indicate how it was refreshed.

```
SELECT LOG_OWNER, MASTER, LOG_TABLE FROM DBA_MVIEW_LOGS;
```

This lists two records, one for each view log.

```
SELECT COUNT(*) FROM MLOG$_JOBENTRY;
SELECT COUNT(*) FROM MLOG$_JOBINVOICELINE;
```

These statements display the number of changes currently recorded in the view logs. Under normal circumstances, they should display zero. If they do not, it is because they currently store changes that are not transferred to the materialized view.

If it appears that the preceding tables are not emptied at any time, it can be because the materialized view is not able to empty them as it should. One reason can be that more than the two view logs have been installed, but without the corresponding materialized views to empty them.

To check that `_mv_refresh_use_stats` system parameter is set up, use the following command:

```
SHOW PARAMETER _mv_refresh_use_stats;
```

It should display the following.

NAME	TYPE	VALUE
<code>_mv_refresh_use_stats</code>	boolean	TRUE

If no data is displayed, the parameter is not set up.

Flush the Shared Pool

Over time, SQL statements for updating the materialized view compile in the shared pool. This is a known issue in Oracle and requires that you empty the shared pool. A stored procedure has been developed for flushing the shared pool every night.



See [Performance Views](#) for instructions on how to install the stored procedure.

To check that the flushing procedure runs as expected, execute the following command. FAILED should be zero and BROKEN should be "N."

```
select job, what, last_date, next_date, failures, broken from dba_jobs where
what like '%maconomy_flush_shared_pool%';
```

To check that the flushing procedure cleaned the shared pool, execute the following command. If it is successful, it should return no entries.

```
SELECT sql_text FROM v$sql WHERE sql_text LIKE '/* MV_REFRESH%';
```

Handling Issues

If the Maconomy database performs poorly, it may be because of an incorrect installation of the materialized view.

To resolve this issue, follow these steps:

1. Run the select statements mentioned in [Check the Materialized View](#). Check the results to find out whether the view is updated at all, and whether it is refreshed quickly.
2. Run the select statements mentioned in [Flush the Shared Pool](#) to find out whether the stored procedure is not flushing correctly and how many entries there are in the shared pool.

3. Drop the view. Use the drop statements of the view definition file. Start with dropping the actual materialized view and then drop the view logs. There is no need to drop the indexes.
4. Apply the view again and check its installation.
5. Install the flushing mechanism again and check its installation.

Troubleshooting

Determine BPM Version and Solution

The internal version number, the external version number, and the solution appear in universes and documents of a BPM release. In universes, the version numbers and solution are stated as custom properties of the data foundations (DFX files). In documents, they are stated in variables.

The format of internal version numbers is:

```
<version>.<sub-version>.<service pack>.<fix pack>
```

For example: 17.0.102.0

Problem with Login to Infoview through the Portal

You cannot log in to BusinessObjects in the Portal using Internet Explorer (IE). The Login screen is displayed, but nothing happens when you try to log in (you stay on the same page). Instead, you can log in directly in **infoview**.

The reports are embedded into the Maconomy Portal using IFrame. IE gives a lower level of trust to IFRAME pages (IE calls this "third-party" content). If the page inside the IFRAME does not have a Privacy Policy, its cookies are blocked. This is indicated by the eye icon in the status bar. When you click this icon, it lists the blocked URLs. The cookies are used to store the BusinessObjects session. Because the session cannot be saved, the user cannot log in.


To resolve the login problem, follow these steps:

1. Create a folder named **w3c** in [Business Objects] \Tomcat55\webapps\
2. Create a file called **p3p.xml** in the same folder with the following code:

```
<META>
  <POLICY-REFERENCES>
    <POLICY-REF about="/w3c/policy.xml">
      <INCLUDE>/</INCLUDE>
      <COOKIE-INCLUDE/>
    </POLICY-REF>
  </POLICY-REFERENCES>
</META>
```



This procedure does not work when you use an IP instead of a server name in the OpenDocument link.



Deltek is the leading global provider of enterprise software and solutions for government contractors, professional services firms and other project-based businesses. For decades, we have delivered actionable insight that empowers our customers to unlock their business potential. 22,000 organizations and millions of users in over 80 countries around the world rely on Deltek to research and identify opportunities, win new business, recruit and develop talent, optimize resources, streamline operations and deliver more profitable projects. Deltek – Know more. Do more. ® www.deltek.com