

Deltek Touch Time for Vision 1.2.1

Technical Installation Guide

December 27, 2013

While Deltek has attempted to verify that the information in this document is accurate and complete, some typographical or technical errors may exist. The recipient of this document is solely responsible for all decisions relating to or use of the information provided herein.

The information contained in this publication is effective as of the publication date below and is subject to change without notice.

This publication contains proprietary information that is protected by copyright. All rights are reserved. No part of this document may be reproduced or transmitted in any form or by any means, electronic or mechanical, or translated into another language, without the prior written consent of Deltek, Inc.

This edition published December 2013.

© 2013 Deltek, Inc.

Deltek's software is also protected by copyright law and constitutes valuable confidential and proprietary information of Deltek, Inc. and its licensors. The Deltek software, and all related documentation, is provided for use only in accordance with the terms of the license agreement. Unauthorized reproduction or distribution of the program or any portion thereof could result in severe civil or criminal penalties.

All trademarks are the property of their respective owners.

Contents

Overview 1

 Adding Custom Notes to This Guide..... 1

If You Need Assistance 2

 Customer Services 2

 Customer Care Connect Site 2

 Additional Documentation 3

Downloading Deltek Products using Deltek Software Manager 4

 Accessing DSM Directly 4

 Accessing DSM from within the Customer Care Connect Site 5

 DSM Documentation and Troubleshooting 5

Supported Mobile Operating Systems..... 6

Prerequisites..... 7

Touch Time Infrastructure 8

 Technical Platform..... 8

 Client Tier and Middle Tier 8

 Services Tier 10

 Supported Deployment Scenarios 11

Microsoft IIS Web Server Configuration on Windows 2008 Server..... 12

Microsoft IIS Web Server Configuration on Windows 2012 Server..... 13

Touch Time Installation 14

Overview

Deltek Touch Time for Vision is a time-tracking tool that allows you to enter, update, submit, and view timesheet data from anywhere at any time using your Android and iOS devices. To use the application, the Touch server component must be installed into your Vision infrastructure (on your existing Vision application server or a separate server).



The official name of the application is *Deltek Touch Time for Vision*. This document only uses it at first mention. The succeeding instances of the application name display *Touch Time*.


In addition, the application name in *Google Play* and *Apple App Store* displays *Touch Time for Deltek Vision*.

This document provides instructions for the installation and configuration of the Touch Time.

Adding Custom Notes to This Guide

If you would like to add custom notes to this guide that are specific to your company, Adobe® Reader® X provides this ability. If you do not already use Adobe Reader X, you can download it [here](#) free from Adobe.

To add a custom note using Adobe Reader X, complete the following steps:

1. On the Reader toolbar, click **Comment** at far right.
2. In the **Annotations** pane that displays, click  **Sticky Note**. The cursor changes to match the button.
3. Position the cursor at the location in the guide where you want the note to appear, and click. A note icon is inserted at the location and a text box pops up.
4. Enter your information in the text box.
5. Continue adding notes as needed.
6. Save the document.



Deltek recommends that you save the document to a slightly different filename so as to keep the original from being overwritten.

When reading the document, cursor over a note icon to see the information. Double-click a note icon to edit the information.

If You Need Assistance

If you need assistance installing, implementing, or using Touch Time for Vision, Deltek makes a wealth of information and expertise readily available to you.

Customer Services

For over 20 years, Deltek has maintained close relationships with client firms, helping with their problems, listening to their needs, and getting to know their individual business environments. A full range of customer services has grown out of this close contact, including the following:

- Extensive self-support options through the Customer Care Connect Web portal.
- Phone and email support from Customer Care analysts
- Technical services
- Consulting services
- Custom programming
- Classroom, on-site, and Web-based training



[Find out more about these and other services from the Customer Care Connect site.](#)

Customer Care Connect Site

The Deltek Customer Care Connect site is a support Web portal for Deltek customers who purchase an Ongoing Support Plan (OSP).

The following are some of the many options you have at the Customer Care Connect site:

- Download the latest versions of your Deltek products
- Search Deltek's knowledge base
- Ask questions, exchange ideas, and share knowledge with other Deltek customers through the Deltek Connect Customer Forums
- Display or download product information, such as release notes, user guides, technical information, and white papers
- Submit a support case and check on its progress
- Transfer requested files to a Customer Care analyst
- Use Quick Chat to submit a question to a Customer Care analyst online
- Subscribe to Deltek communications about your Deltek products and services
- Receive alerts of new Deltek releases and hot fixes



[If you need assistance using the Customer Care Connect site, the online help available on the site provides answers for most questions](#)

Access Customer Care Connect

To access the Customer Care Connect site, complete the following steps:

1. Go to <http://support.deltek.com>.
2. Enter your Customer Care Connect **Username** and **Password**.
3. Click **Log In**.



If you do not have a username and password for the Customer Care Connect site, contact your firm's Touch Time for Vision Administrator.

If you forget your username or password, you can click the **Account Assistance** button on the login screen for help.

Additional Documentation

The following table lists the additional Deltek documentation available for this release. Except where noted, all the user guides and quick reference guides listed in this table are available for download from the Deltek Customer Care Connect site.

Document Name	Description
Deltek Touch Time for Vision User Guide	This document contains detailed information and instructions on how to use various features of the application.
Deltek Touch Time for Vision Release Notes	This document contains a summary of the technical considerations, major features, and known issues of the application.

Downloading Deltek Products using Deltek Software Manager

You can use Deltek Software Manager (DSM) to download complete Deltek products, hot fixes, and sub-releases. You can access DSM directly or through the Deltek Customer Care Connect site.

When you access DSM directly, you will be prompted to log on before you can access the application. If you access DSM from within the Deltek Customer Care site, you do not have to log on since you are already logged into the Customer Care site.

Accessing DSM Directly

To access Deltek Software Manager directly, complete the following steps:

1. Launch Deltek Software Manager by taking one of the following actions:
 - Click [here](#).
 - On your desktop, click **Start » All Programs » Deltek Software Manager**.
2. In the Deltek Software Manager logon dialog box, enter your Deltek Customer Care **User ID** and **Password**, and click **Logon**.
3. To select the folder where you want to download Deltek products, click **Settings** above the right pane of Deltek Software Manager.



When you log on for the first time, Deltek Software Manager asks you to select a default folder where Deltek products are to be downloaded.

4. Use the Settings dialog box to specify the folder where you want to download Deltek products, and click **OK**.



You can change this folder anytime in the Settings dialog box.

5. In the left pane of Deltek Software Manager, expand the Deltek product that you want to download, if it is not already expanded.



If you clicked the link in step 1 to access DSM, the application automatically selects Touch Time for Vision for you.

6. Select the product type that you want to download. Your options are **Complete**, **HotFix**, and **Sub-Release**.
7. In the table, select the check box that corresponds to the Deltek product that you want to download. The right pane displays a message stating that the product has been added to the download queue.



To view the items in the download queue, click **View Download Queue** at the bottom of the left pane.

8. Click **Download** at the bottom of the left pane. Deltek Software Manager downloads the product to the folder that you selected.

Accessing DSM from within the Customer Care Connect Site

To access Deltek Software Manager from within the Customer Care Connect site, complete the following steps:

1. In your Web browser, go to <http://support.deltek.com>.
2. Enter your Customer Care Connect **Username** and **Password**, and click **Log In**.
3. When the Customer Care Connect site displays, click the Product Downloads tab.
You are automatically logged into Deltek Software Manager.
4. To select the folder where you want to download Deltek products, click **Settings** above the right pane of Deltek Software Manager.



When you log on for the first time, Deltek Software Manager asks you to select a default folder where Deltek products are to be downloaded.

5. Use the Settings dialog box to specify the folder where you want to download Deltek products, and click **OK**.



You can change this folder anytime in the Settings dialog box.

6. In the left pane of Deltek Software Manager, expand the Deltek product that you want to download, if it is not already expanded.
7. Select the product type that you want to download. Your options are **Complete**, **HotFix**, and **Sub-Release**.
8. In the table, select the check box that corresponds to the Deltek product that you want to download. The right pane displays a message stating that the product has been added to the download queue.



To view the items in the download queue, click **View Download Queue** at the bottom of the left pane.

9. Click **Download** at the bottom of the left pane. Deltek Software Manager downloads the product to the folder that you selected.

DSM Documentation and Troubleshooting

- To view the online help for Deltek Software Manager, click [here](#).
- To view a tutorial on how to use Deltek Software Manager, click [here](#).
- To view more information on troubleshooting Deltek Software Manager, click [here](#).



The above troubleshooting link will only work if you are logged into Deltek Customer Care Connect.

Supported Mobile Operating Systems

In this release, the Touch Time application only supports mobile devices that run on the following operating systems:

- Apple iOS 5.0 and higher
- Android 2.3.3 and higher (excluding 3.x)

Prerequisites

Before you begin the installation of Touch Time, it is important to understand the following information:

- Touch Time 1.2.1 works with Vision 7.1 Cumulative Update #011 and Vision 7.2.



To use the full functionality of Touch Time, you must be on the latest Touch server and Vision.

When installing Touch Time on a dedicated server, ensure that the Vision Web service URL (for example, <https://server.company.com/vision/visionservices.aspx>) can be accessed from the Touch server. This includes ensuring that the required TCP/IP ports (for example, 443) are open and the Vision server can be resolved via DNS from the Touch server.

You must own Vision Core.

- You must install Touch Time on an IIS server that is installed on Windows 2008, Windows Server 2008 R2, or Windows Server 2012.
- If you are going to access Touch Time from the Internet, open a port in your firewall to access the Touch Time virtual directory, which will be installed on the IIS server. Deltek recommends that you use HTTPS protocol in your production deployment. HTTPS encrypts the data in transit.



When Vision is not exposed to the Internet, a VPN can be used to connect the mobile device to the corporate network on which Vision resides to provide the connection needed for Touch Time. However, while the most common VPN configurations will most likely work without problems, Deltek has not tested all possible VPN types and configurations to ensure compatibility.

- Touch Time supports applications from the *Apple App Store* and *Google Play*. If you are using an unsupported version of Vision (compatibility mode), you may be able to use the native browser of your device to enter your organization's Touch Time URL.

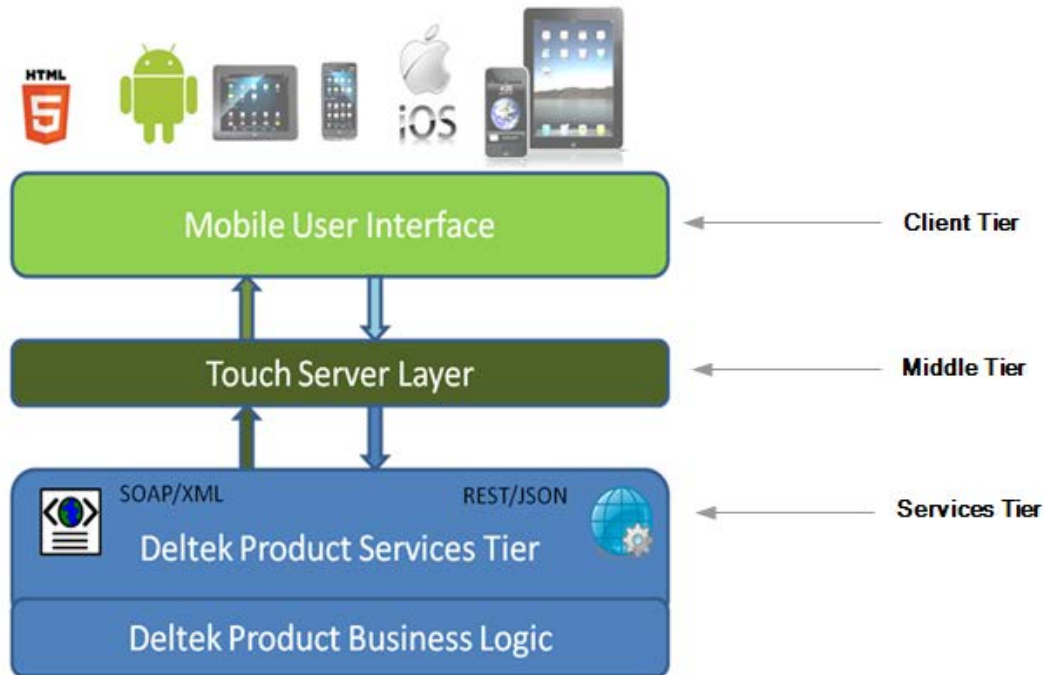


The Touch Time URL has the format <https://<server>/deltektouch/vision/time>, where **<server>** refers to the host name of your Touch server.

Touch Time Infrastructure

The Touch Time infrastructure is composed of the client tier, middle tier, and services tier.

Technical Platform

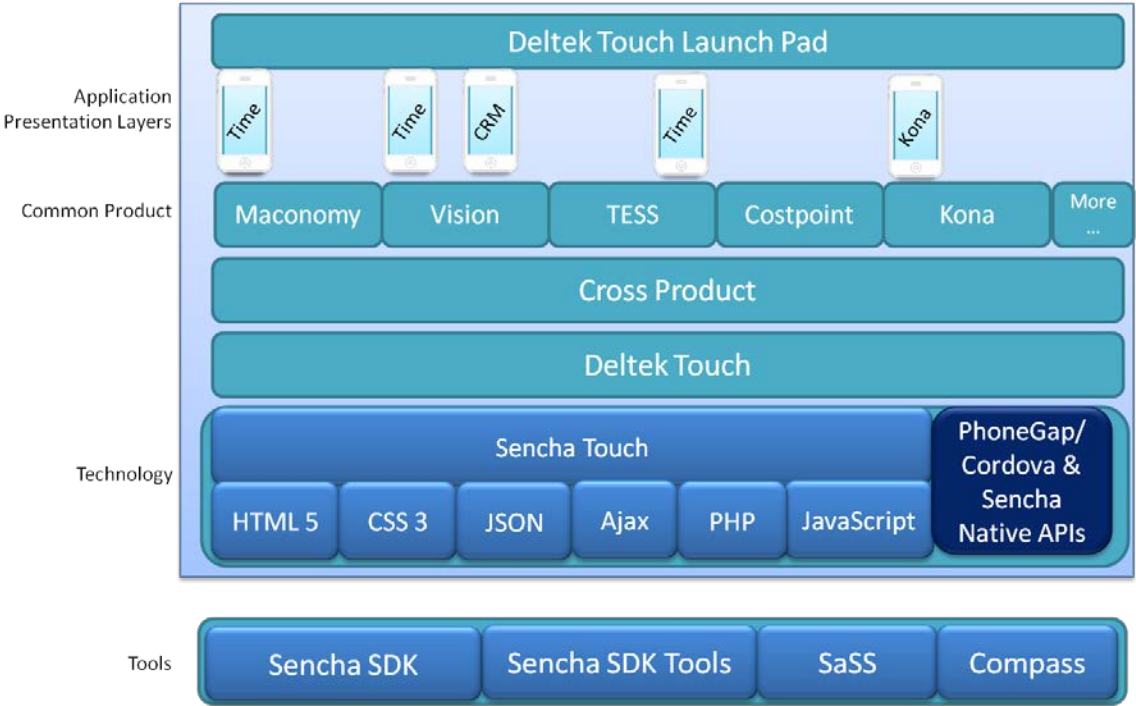


Client Tier and Middle Tier

Touch Time Server (middle tier) is used to optimize service delivery and provides a platform for future 3rd-party product integration. It is based on Sencha Touch, and uses JSON, Ajax, and PHP.

Touch Time Client (client tier) is a hybrid application and created using HTML 5 and CSS 3 but with the ability to access the native device capabilities.

The following diagram displays the client tier and middle tier components:

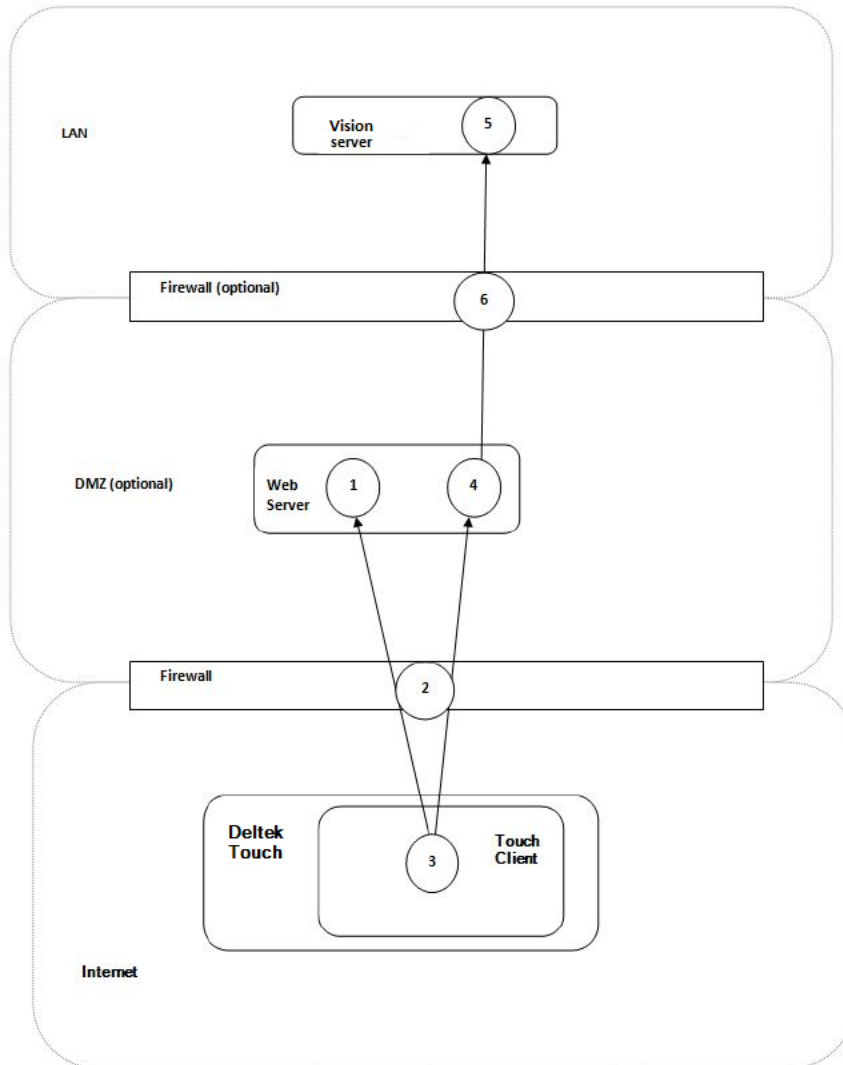


Services Tier

For Touch Time, the services tier corresponds to the Vision Web services. The interaction between the Vision product and Deltek Touch (client + middle tier) is illustrated below:

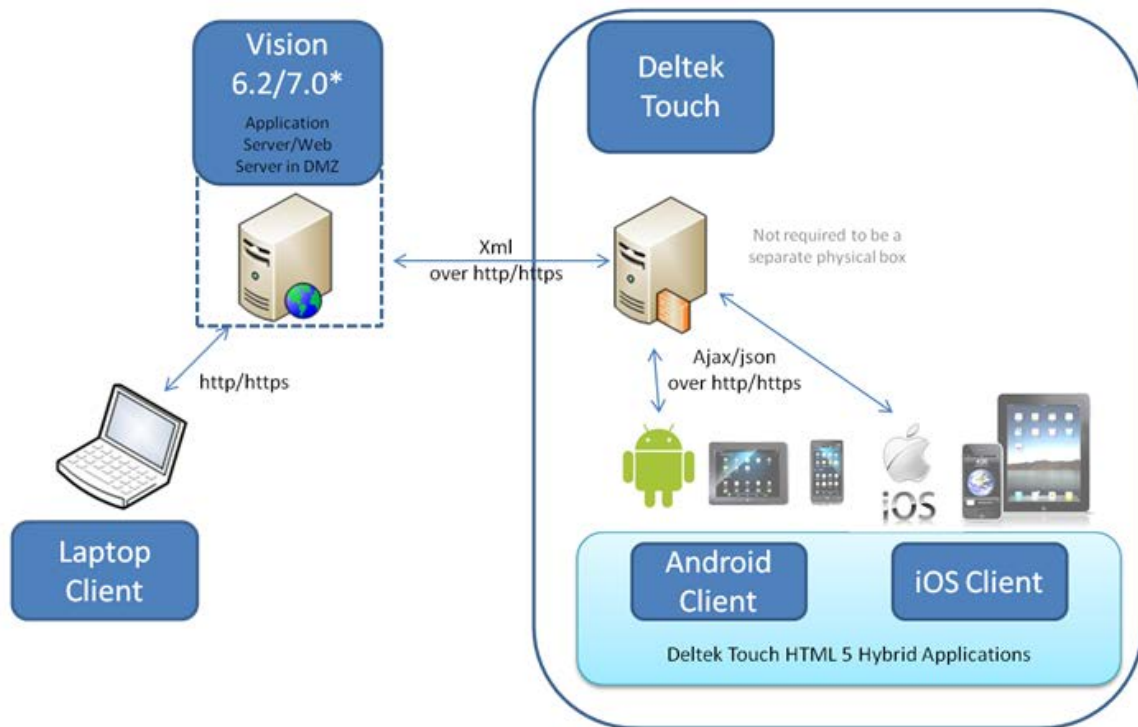


It is not required to install Touch Time on a separate physical server. These illustrations only provide a logical view.



Supported Deployment Scenarios

Touch Time may be installed on another IIS server or as a separate virtual directory on an existing Vision IIS Web server.



Deltek recommends the use of HTTPS protocol when transmitting data over the Internet. HTTPS encrypts the data in transit. This is even more important when using Windows Authentication.

Microsoft IIS Web Server Configuration on Windows 2008 Server

Perform this procedure if you are going to install the Touch Time application on Windows Server 2008. The Touch Time installer checks if Microsoft Internet Information Services (IIS) is already installed before proceeding with the installation. The installation terminates if IIS is not yet installed.



Touch Time requires Anonymous Authentication and does not support Basic Authentication.

To configure Microsoft IIS web server on Windows 2008 Server, complete the following steps:

1. Click **Windows » Start » Administrative Tools » Server Manager**.
2. Expand the **Roles** tree on the left pane, and click **Web Server (IIS)**.
3. When the Web Server (IIS) screen displays, click **Add Role Services** in the bottom right pane.
4. On the Select Role Services screen, perform the following actions:
 - Click **Web Server » Application Development**, and select **ISAPI Extensions** and **CGI**.
 - Click **Web Server » Management Tools**, and select **IIS Management Scripts and Tools**.
 - Click **Web Server » Management Tools » IIS 6 Management Compatibility**, and select **IIS 6 Metabase Compatibility**.
5. Click **Next**, and then click **Install**.
6. When the installation completes, click **Close**.
7. Expand the **Web Server (IIS)** tree on the left pane, and click **Internet Information Services (IIS) Manager**.
8. On the Internet Information Services (IIS) Manager screen, expand the IIS computer name icon on the left pane of the Internet Information Services (IIS) Manager window.
9. Right-click the IIS computer name icon, and select **Stop**.
10. Right-click the IIS computer name icon on the left pane of the Internet Information Services (IIS) Manager window, and select **Start**.
11. Close the Services Manager window.

Microsoft IIS Web Server Configuration on Windows 2012 Server

Perform this procedure if you are going to install the Touch Time application on Windows Server 2012. The Touch Time installer checks if Microsoft Internet Information Services (IIS) is already installed before proceeding with the installation. The installation terminates if IIS is not yet installed.



Touch Time requires Anonymous Authentication and does not support Basic Authentication.

To configure Microsoft IIS web server on Windows 2012 Server, complete the following steps:

1. From the desktop view, display the Charm Bar. To do this, take one of the following actions:
 - Move the cursor to the bottom right corner of the screen, which causes the bar to display on the right.
 - On your keyboard, press the Windows key + **C**.



For more information about Charm Bar, see the following link:

<http://windows.about.com/od/windowsforbeginners/a/Get-To-Know-The-New-Windows-8-Start-Menu.htm>.

2. Click **Start » Administrative Tools » Server Manager**.
3. On the left pane, click **IIS**.
4. On the right pane, scroll down to see the **ROLES and FEATURES** section.
5. From the **Tasks** drop-down list, select **Add Roles and Features**. The Add Roles and Feature Wizard displays.
6. Click **Next**.
7. Select the **Role-based or feature-based installation** option.
8. On the Select Destination Server page, verify if the **Select a server from the server pool** option is selected. Click **Next**.
9. On the Select server roles page, expand **Web Server (IIS) » Web Server » Application Development**, select **CGI** and **ISAPI** extensions.
10. On the Select server roles page, expand **Web Server (IIS) » Web Server » Management Tools**, and then select **IIS Management Scripts and Tools**.
11. On the Select server roles page, expand **Web server (IIS) » Web Server » Management Tools » IIS 6 Management Compatibility » IIS 6 Metabase Compatibility**.
12. Click on **Next**. The Select features page displays.
13. Click **Next**, and then click **Install**.

Touch Time Installation

Before you proceed, make sure that you downloaded the server component from Deltek Software Manager (DSM). Once the server part is installed, download the application from *Google Play* or *Apple App Store* and install it in your device.



For more information about DSM, see [Downloading Deltek Products using Deltek Software Manager](#) in this document.

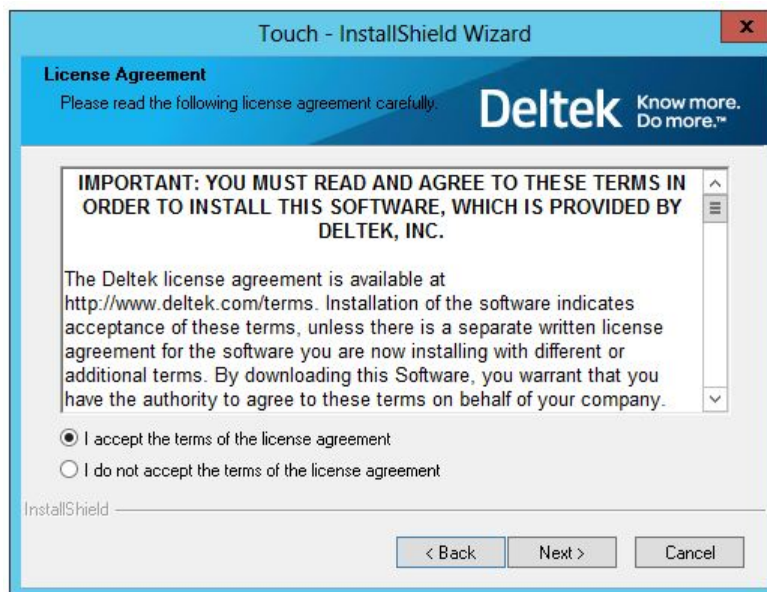
To install the Deltek Touch application, complete the following steps:

1. Run **DeltekTouchVisionTime121.exe** to launch the Touch Time installation program.



Taking into consideration the enhanced security in Windows Server 2008, Deltek recommends selecting the **Run as Administrator** option when launching the installation executables even if you (as the logged-on user) has local administrative rights. You can access this option by right-clicking the installation executable file name in Windows Explorer and then clicking **Run as Administrator** on the shortcut menu.

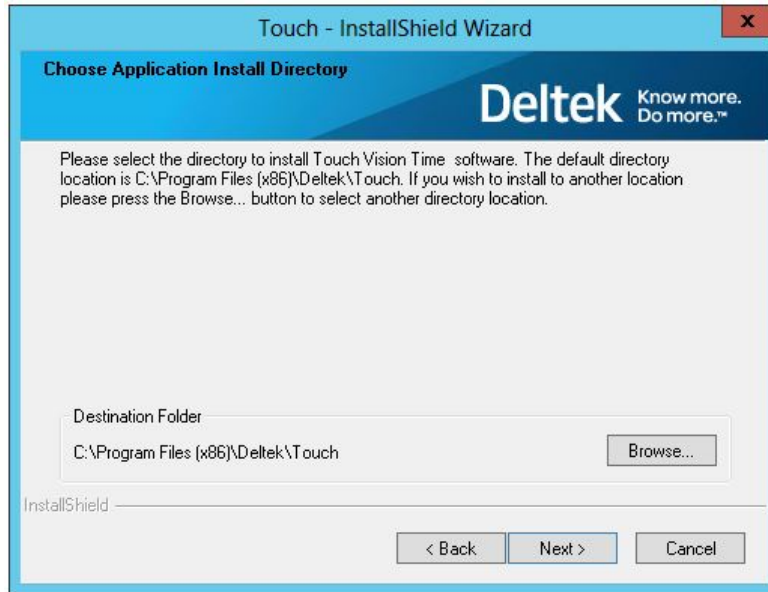
2. On the Welcome to the Deltek Touch Vision Time 1.2.1 Installation Wizard page, click **Next**.
3. On the License Agreement page, review the license agreement, select the **I accept the terms of the license agreement** option, and click **Next**.



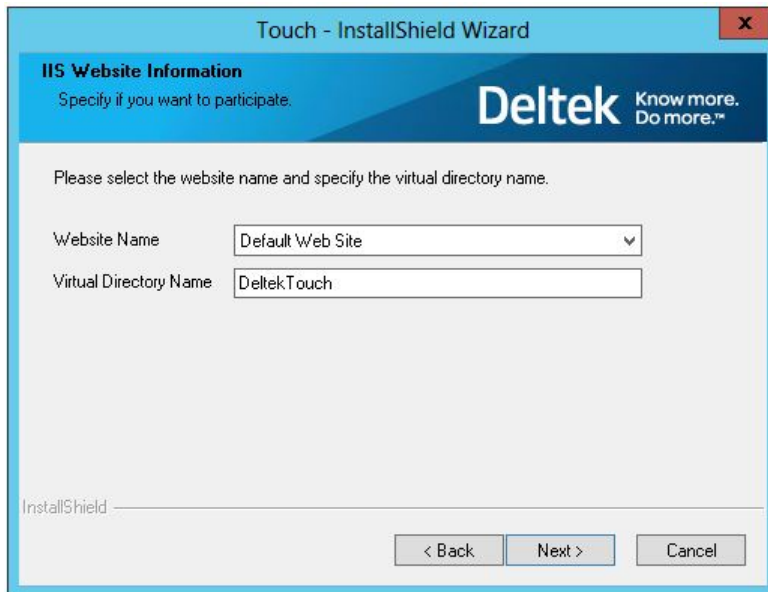
4. On the Choose Application Install Directory page, verify if the default location for the Deltek Touch software is correct, and click **Next**. Otherwise, click **Browse** to navigate to the installation folder.



The default folder is C:\Program Files (x86)\Deltek\Touch on a 64-bit machine and C:\Program Files\Deltek\Touch on a 32-bit machine.



5. *This step only applies if Vision is **NOT** installed in the same server as Touch Time.* On the IIS Website Information page, select or enter the default Web site and virtual directory name, and click **Next**. Wait until the installer finishes validating PHP.



6. On the Deltek Vision Web Services URL page, either enter the Web Services URL or accept the default value, and click **Next**.

Touch - InstallShield Wizard

Deltek Vision Web Services Url

Please specify your Deltek Vision Web Services Url. The Deltek Vision Web Services Url must end with VisionServices.asmx.

Site:

InstallShield

< Back Next > Cancel



- Your Vision server must end with VisionServices.asmx.
- When installing Touch Time on a dedicated server, ensure that the Vision Web service URL can be accessed from the Touch server.

7. On the Customer Experience Improvement Program page, select the **Send Installation Data to Deltek** option if you want to participate.

Touch - InstallShield Wizard

Customer Experience Improvement Program

Specify if you want to participate.

Please participate in the Deltek Customer Experience Improvement Program (CEIP) by submitting information relating to your technical configuration to Deltek.

This information is used to better support you and for Deltek to monitor installation statistics and technical demographics.

If you elect to participate, this information creates more awareness inside Deltek and enables us to improve the customer experience. No personally identifiable or other sensitive information is included with the transmitted data.

If you would prefer not to participate in the CEIP, please uncheck the checkbox below.

☒ Send installation data to Deltek

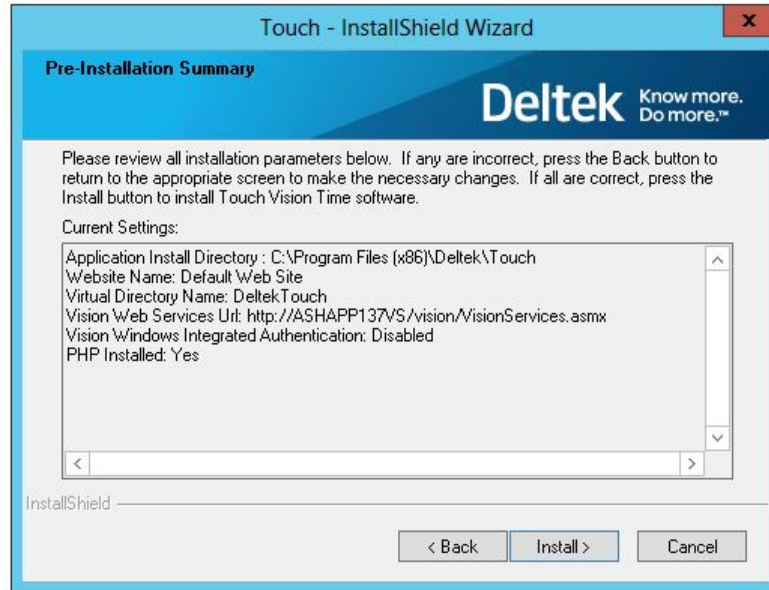
The following technical information will be sent:

OS: Microsoft Windows Server 2012 Standard Service Pack: (64-bit)
OS Build: 6.2.9200.0
CPU's: 1
Memory: 4 GB
Language: English (United States)

InstallShield

< Back Next > Cancel

8. On the Pre-Installation Summary page, review the installation details that you provided.

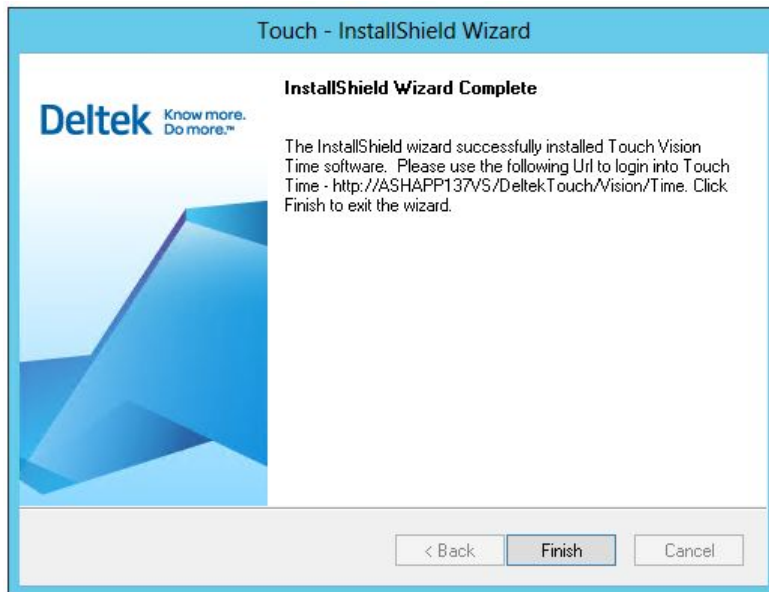


- If you want to change any settings, click **Back**, and make the necessary updates.
- If you are done, click **Install** to begin the installation.




If there are errors, the [DeltekTouchInstall.log](#) file displays.

9. When the installation is done, on the InstallShield Wizard Complete page, click **Finish**.



If you want to have a separate test and production environments, you can run the installer multiple times to install several instances of Touch Time. Each instance, however, requires a new virtual directory pointing to a different physical location (Install Directory).

A blue geometric graphic consisting of several overlapping triangles and polygons, located in the top-left corner of the page.

Deltek is the leading global provider of enterprise software and information solutions for professional services firms, government contractors, and government agencies. For decades, we have delivered actionable insight that empowers our customers to unlock their business potential. Over 14,000 organizations and 1.8 million users in approximately 80 countries around the world rely on Deltek to research and identify opportunities, win new business, optimize resource, streamline operations, and deliver more profitable projects. Deltek – Know more. Do more.®

deltek.com