



Deltek

Deltek Cobra® 8.4

Cumulative Update 31 Release Notes

February 29, 2024

While Deltek has attempted to verify that the information in this document is accurate and complete, some typographical or technical errors may exist. The recipient of this document is solely responsible for all decisions relating to or use of the information provided herein.

The information contained in this publication is effective as of the publication date below and is subject to change without notice.

This publication contains proprietary information that is protected by copyright. All rights are reserved. No part of this document may be reproduced or transmitted in any form or by any means, electronic or mechanical, or translated into another language, without the prior written consent of Deltek, Inc.

This edition published February 2024.

© Deltek, Inc.

Deltek's software is also protected by copyright law and constitutes valuable confidential and proprietary information of Deltek, Inc. and its licensors. The Deltek software, and all related documentation, is provided for use only in accordance with the terms of the license agreement. Unauthorized reproduction or distribution of the program or any portion thereof could result in severe civil or criminal penalties.

All trademarks are the property of their respective owners.

Contents

Overview	4
Cobra 8.4 Cumulative Update 31	6
Cobra 8.4 Cumulative Update 30	8
Cobra 8.4 Cumulative Update 29	10
Cobra 8.4 Cumulative Update 28	13
Cobra 8.4 Cumulative Update 27	16
Cobra 8.4 Cumulative Update 26	20
Cobra 8.4 Cumulative Update 25	24
Cobra 8.4 Cumulative Update 24	28
Cobra 8.4 Cumulative Update 23	32
Cobra 8.4 Cumulative Update 22	34
Cobra 8.4 Cumulative Update 21	35
Cobra 8.4 Cumulative Update 20	37
Cobra 8.4 Cumulative Update 19	40
Cobra 8.4 Cumulative Update 18	42
Cobra 8.4 Cumulative Update 17	45
Cobra 8.4 Cumulative Update 16	48
Cobra 8.4 Cumulative Update 15	51
Cobra 8.4 Cumulative Update 14	55
Cobra 8.4 Cumulative Update 13	58
Cobra 8.4 Cumulative Update 12	61
Cobra 8.4 Cumulative Update 11	66
Cobra 8.4 Cumulative Update 10	72
Cobra 8.4 Cumulative Update 09	79
Cobra 8.4 Cumulative Update 08	83
Cobra 8.4 Cumulative Update 07	88
Cobra 8.4 Cumulative Update 06	91
Cobra 8.4 Cumulative Update 05	96
Cobra 8.4 Cumulative Update 04	104
Cobra 8.4 Cumulative Update 03	107
Cobra 8.4 Cumulative Update 02	109
Cobra 8.4 Cumulative Update 01	117
Appendix A: Download and Install the Cumulative Update	123
Appendix B: For Additional Information	127

Overview

This document includes all of the enhancements, software issues resolved, database changes that were made in Cobra 8.4 Cumulative Update 01 through Cobra 8.4 Cumulative Update 31.

Custom Programs Affected

Sometimes an update can cause custom programs and reports to stop working as expected. Before applying this update, consider whether you have any custom programs or reports in the application area affected by the update. If so, contact a Deltek Customer Success analyst at <http://support.deltek.com> before you install the update.

Attention: For steps to install the cumulative update, see “Appendix A: Download and Install the Cumulative Update” in this document.

Viewing the Help System

The Deltek Cobra Help System provides help for all areas of the Cobra application.

- To access all documents available for Cobra 8.4, click <https://help.deltek.com/Product/Cobra/8.4/GA>.
- To access the printable version of the Cobra Help System, see [Cobra Help System in Portable Document Format](#). Take note that some of the links in the PDF version may not work.
- To view the collection of videos that will help you work with Cobra, see [Cobra Videos](#).

Note: You can access the online help using Microsoft Edge, Chrome, or Firefox.

Software Requirements (Compatibility Matrix)

To see the list of the supported and compatible technologies, see “System Requirements” in the [Deltek Cobra 8.4 Installation Guide](#).

For a complete list of the recommended minimum software requirements, see the *Deltek Product Support Compatibility Matrix* document, which you can download from the [Deltek Support Center](#) site.

Integration with PM Compass

If you have upgraded from one version of Cobra to another and are using PM Compass, ensure that you install the most recent version of the Cobra Integration for PM Compass file that was released prior to or at the same time as the PM Compass Cumulative Update that you are using on your PM Compass server.

To further explain this scenario, refer to the following table, which summarizes the Cobra 8.5 Integration for PM Compass files released for PM Compass 8.4 Cumulative Updates.

PM Compass 8.4 Cumulative Update (CU)	Cobra 8.5 for PM Compass 8.4 Integration File
PM Compass 8.4 CU 05	No new integration file

PM Compass 8.4 Cumulative Update (CU)	Cobra 8.5 for PM Compass 8.4 Integration File
PM Compass 8.4 CU 04	No new integration file
PM Compass 8.4 CU 03	Deltek Cobra 8.5 Integration for PM Compass 8.4_8.5.0704.3469
PM Compass 8.4 CU 02	Deltek Cobra 8.5 Integration for PM Compass 8.4_8.5.0703.3448
PM Compass 8.4 CU 01	Deltek Cobra 8.5 Integration for PM Compass 8.4_8.5.0702.3430

If you have upgraded from Cobra 8.4 to 8.5 and are using PM Compass 8.4 CU 04, you should note that no new integration file was released at the same time as PM Compass 8.4 CU 04. However, there was an integration file released prior to it, which is Deltek Cobra 8.5 Integration for PM Compass 8.4_8.5.0704.3469. To ensure that PM Compass integration with Cobra works correctly, you must install this version on your PM Compass Process server.

Attention: For more information on the [PM Compass Cumulative Updates and Integration Releases](#), download the related document from the [Deltek Support Center](#) site. If you have any questions, contact a Deltek Customer Success analyst.

Cobra 8.4 Cumulative Update 31

Released: February 29, 2024

Note: The enhancements and software issues resolved in this release will be included in a Cobra 8.5 Cumulative Update release. Refer to the latest [Deltek Cobra 8.5 Cumulative Update Release Notes](#).

Enhancements

There are no enhancements in this release.

Software Issues Resolved

This section includes software issues resolved in this release.

[Project Processes » Calculate Forecast](#)

Defect 2064285

Description: When you ran the Calculate Forecast Wizard against a forecast class that used the Coded Ranges forecast method and selected the **Slip all invalid dates that are earlier than the status date - Forecast, Early, or Late** option on the Options page, Cobra deleted the forecast time-phased records for the Retain EAC and Retain ETC codes, even though they should have been retained.

Customers Impacted: This defect affects customers using the Calculate Forecast Wizard against a forecast class that uses the Coded Ranges forecast method.

Workaround Before Fix: None.

Files Updated:

- Cobra.Process.dll

[Project Processes » Recalc](#)

Defect 2078704

Description: When you ran the Recalc Wizard with the **Allow editing current period** project preference option selected, Cobra did not allow you to select the current period on the Date Range page.

Customers Impacted: This defect affects customers using the Recalc Wizard.

Workaround Before Fix: None.

Additional Notes: Defect 2025647 changed the behavior of the Recalc Wizard, causing it to no longer accurately support the selection of specific dates. The Recalc Wizard has been updated to ensure that all dates can be correctly selected.

This defect has also been fixed in Cobra 8.5 Cumulative Update 07 (Defect 2088660).

Project Processes » Replan

Defect 1745992

Description: When you ran the Replan Wizard and the work packages used a progress technique option other than Milestones, Cobra did not move the completed milestones to the replanned work packages.

Customers Impacted: This defect affects customers using the Replan Wizard.

Workaround Before Fix: None.

Files Updated:

- Cobra.WinUI.*.dll
- Cobra.WinUI.exe
- Cobra.Process.dll

Security Enhancements

There are no security enhancements in this release.

Database Changes

There are no database changes in this release.

Data Changes

There are no data changes in this release.

Documentation Changes

This section includes details of section changes in the printed documentation that are in addition to any enhancements.

Document	Details
Deltek Cobra 8.4 Help System	<ul style="list-style-type: none">▪ Added a note to the Prevent editing of historical time phased values and Allow editing current period description in the Project Preferences topic▪ Updated the description for Allow posting actual costs to a completed Control Account or Work Package in the Actual Costs Preferences topic

Cobra 8.4 Cumulative Update 30

Released: January 31, 2024

Note: The enhancements and software issues resolved in this release will be included in a Cobra 8.5 Cumulative Update release. Refer to the latest [Deltek Cobra 8.5 Cumulative Update Release Notes](#).

Enhancements

There are no enhancements in this release.

Software Issues Resolved

This section includes software issues resolved in this release.

[File » Integration Wizard-Project Data](#)

Defect 2009048

Description: When you ran the Integration Wizard to load Microsoft Project Server data, Cobra took longer to retrieve the time-phased spread data if both conditions were met:

- The Project Server database contained a large number of activity and resource records.
- The **Time-phased data is expanded in the Microsoft Project database** option on the Resource Assignments page was selected.

Customers Impacted: This defect affects customers using the Integration-MS Project Wizard.

Workaround Before Fix: None.

Files Updated:

- Cobra.Process.dll

[Help](#)

Defect 2061134

Description: When you clicked the **Help** button on the Other Options page of the Integration Wizard, Cobra encountered an error instead of displaying the associated help topic.

Customers Impacted: This defect affects all customers.

Workaround Before Fix: None.

Files Updated:

- Cobra Help HTML Mapping file

[Security Enhancements](#)

There are no security enhancements in this release.

Database Changes

There are no database changes in this release.

Data Changes

There are no data changes in this release.

Documentation Changes

This section includes details of section changes in the printed documentation that are in addition to any enhancements.

Document	Details
Deltek Cobra 8.4 Help System	<ul style="list-style-type: none">Removed "Loading project data" and "Loading status" from the list of Cobra operations where you can use master projects in the Multiproject Operations (Master and Subprojects) topic

Cobra 8.4 Cumulative Update 29

Released: December 8, 2023

Note: The enhancements and software issues resolved in this release will be included in a Cobra 8.5 Cumulative Update release. Refer to the latest [Delttek Cobra 8.5 Cumulative Update Release Notes](#).

Enhancements

There are no enhancements in this release.

Software Issues Resolved

This section includes software issues resolved in this release.

[Project Processes » Assignment Export or Import](#)

Defect 165874

Description: When you ran the Assignment Export Wizard and selected the **First Result** option on the Resource Assignments page, Cobra encountered the following error: "[Error] The 'Spread' start tag on line error when a resource code is missing from the resource file."

Customers Impacted: This defect affects customers using the Assignment Export Wizard.

Workaround Before Fix: None.

Files Updated:

- Cobra.WinUI.*.dll
- Cobra.WinUI.exe
- Cobra.Process.dll

Defect 2050467

Description: When you ran the Assignment Export Wizard and selected the **Selected Result** option on the Resource Assignments page, and a resource code that existed in the time-phased record was missing from the resource file, the report did not display the missing resource code, and Cobra did not display an error message for the missing resource code.

Customers Impacted: This defect affects customers using the Assignment Export Wizard.

Workaround Before Fix: Add the missing resource code to the resource file.

Files Updated:

- Cobra.WinUI.*.dll
- Cobra.WinUI.exe
- Cobra.Process.dll

Project Processes » Recalc

Defect 2025647

Description: When you ran the Recalc Wizard with the **Prevent editing of historical time-phased values** project preference option selected and you did not select the **Allow Recalc on classes not editable in the time-phase grid** option on the Options page, Cobra modified the historical time-phased values.

Customers Impacted: This defect affects customers using the Recalc Wizard with the Prevent editing of historical time-phased values project preference option selected.

Workaround Before Fix: None.

Additional Notes: This defect has been fixed in Cobra 8.5 Cumulative Update 04 (Defect 2019093).

Files Updated:

- Cobra.Process.dll
- Cobra.WinUI.exe
- Cobra.Model.*.dll

Projects » Project View

Defect 773863

Description: You could display the projects and master projects created in PM Compass in some areas of Cobra such as views and lookup dialog boxes.

Customers Impacted: This defect affects all customers.

Workaround Before Fix: None.

Files Updated:

- Cobra.Model.dll
- Cobra.WinUI.Base.dll
- Cobra.WinUI.Explorer.dll

Security Enhancements

There are no security enhancements in this release.

Database Changes

There are no database changes in this release.

Data Changes

There are no data changes in this release.

Documentation Changes

This section includes details of section changes in the printed documentation that are in addition to any enhancements.

Document	Details
Deltek Cobra 8.4 Help System	<ul style="list-style-type: none"> Updated the following topics to provide a more detailed explanation of the Spread resource across activity dates and Use curves for resource spreads options: <ul style="list-style-type: none"> Resource Assignments Page of the Integration Wizard-Files Import File Loading Considerations Updated the Multiproject Operations (Master and Subprojects) topic to include a note on filtering by control account or work package in reporting and update the list of Cobra processes that use master projects Updated the Multiproject Guidelines topic to delete obsolete and inaccurate content

Cobra 8.4 Cumulative Update 28

Released: November 17, 2023

Note: The enhancements and software issues resolved in this release will be included in a Cobra 8.5 Cumulative Update release. Refer to the latest [Deltek Cobra 8.5 Cumulative Update Release Notes](#).

Enhancements

There are no enhancements in this release.

Software Issues Resolved

This section includes software issues resolved in this release.

Project Processes » Reclass

Defect 2017913

Description: When you ran the Reclass Wizard, the process performance was impacted by these conditions:

- You had a filter set on the Filter page.
- You did not select the **Reclass all periods in your project** option on the Date Range page.
- The target class had many time-phased entries that needed updating.

Customers Impacted: This defect affects customers using the Reclass Wizard.

Workaround Before Fix: None.

Files Updated:

- Cobra.WinUI.*.dll
- Cobra.WinUI.exe
- Cobra.Process.dll

File » Integration Wizard-Project Data

Defect 2020322

Description: When you ran the Integration Wizard with the **Prevent editing of historical time-phased values project preference** option selected and you did not select the **Apply historical budget changes as an adjusting entry** option on the Change Control page, Cobra created an adjusting entry in the current period rather than spreading the values over the remaining periods.

Customers Impacted: This defect affects customers using the Integration Wizard.

Workaround Before Fix: None.

Files Updated:

- Cobra.Process.dll

Reports » Report Wizard

Defect 1929549

Description: When you ran the Report Wizard and selected a report filter by pressing the SPACE BAR, ENTER, or TAB key while on the Filter/Sort page, Cobra encountered the "Unhandled Exception: Object reference not set to an instance of an object" error.

Customers Impacted: This defect affects customers using the Report Wizard.

Workaround Before Fix: Use your mouse rather than your keyboard when selecting a report filter.

Files Updated:

- Cobra.WinUI.Base.dll
- Cobra.WinUI.Reports.dll

Tools » SQL Command Utility

Defect 925672

Description: When you ran a statement or query that returned a large number of records using the SQL Command Utility or a custom menu item, Cobra encountered the "Message: String is too long to fit" error.

Customers Impacted: This defect affects customers using the SQL Command Utility or a custom menu item.

Workaround Before Fix: Limit the number of records returned; for example, display only the first 1,000 records.

Files Updated:

- Cobra.WinUI.*.dll
- Cobra.WinUI.exe
- Cobra.Process.dll

Security Enhancements

There are no security enhancements in this release.

Database Changes

There are no database changes in this release.

Data Changes

There are no data changes in this release.

Documentation Changes

This section includes details of section changes in the printed documentation that are in addition to any enhancements.

Document	Details
Deltek Cobra 8.4 Help System	<ul style="list-style-type: none"> Created/updated the following topics to better explain how Cobra spreads ETC: <ul style="list-style-type: none"> How Cobra Spreads ETC Calculate Forecast Spread by Existing EAC Calculate Forecast Spread by Budget Updated the following topics to remove the incorrect notes: <ul style="list-style-type: none"> Project Preferences Reclass Updated the description of the Recalculate existing milestone weights option in the Change Control Page of the Integration Wizard topic

Cobra 8.4 Cumulative Update 27

Released: October 6, 2023

Note: The enhancements and software issues resolved in this release will be included in a Cobra 8.5 Cumulative Update release. Refer to the latest [Deltek Cobra 8.5 Cumulative Update Release Notes](#).

Enhancements

There are no enhancements in this release.

Software Issues Resolved

This section includes software issues resolved in this release.

File » Integration wInsight

Defect 1451325

Description: When you ran the wInsight Wizard to export a UN/CEFACT XML file, Cobra exported the **Program Phase Quantity** field value to the **<RDQty>** and **<ProdQty>** tags based on the **Contract Phase** field value rather than the corresponding quantity tag for the selected **Program Phase Quantity** field value.

Customers Impacted: This defect affects customers using the wInsight Wizard to export to wInsight 8.1 or later.

Workaround Before Fix: None.

Additional Notes: Instead of using the value of the **Contract Phase** field to determine the quantity tag to utilize during the UN/CEFACT XML file export, Cobra now uses the value assigned to the **Program Phase** field on the Contract Information tab of the Project Properties dialog box.

Value	Quantity Tag
Development	<RDQty>
LRIP	<LRIPQty>
Production	<ProdQty>
Sustainment	<SustainmentQty>

Files Updated:

- Cobra.WinUI.*.dll
- Cobra.WinUI.exe
- Cobra.Process.dll

File » Integration Wizard-Project Data

Defect 1405858

Description: When you ran the Integration Wizard to load data from a combined import file where more than one **Result** column was selected and then selected the **Apply historical budget changes as an adjusting entry in the current status period** option on the Change Control page, Cobra did not create an adjustment entry in the current period.

Customers Impacted: This defect affects customers using the Integration Wizard.

Workaround Before Fix: Import only one result per import file if you want each result to be imported rather than calculated.

Files Updated:

- Cobra.Process.dll

Project Processes » Calculate Forecast

Defect 2003771

Description: When you ran the Calculate Forecast Wizard, Cobra did not spread the time-phased values over the new dates if forecast dates were extended.

Customers Impacted: This defect affects customers using the Calculate Forecast Wizard.

Workaround Before Fix: None.

Files Updated:

- Cobra.Process.dll

Project Processes » Reclass

Defect 2001865

Description: When you ran the Reclass Wizard and the source or target class ID contained a double pipe (||), no class was processed, and Cobra encountered the "Unable to determine <from/to> class level" error.

Customers Impacted: This defect affects customers using the Reclass Wizard on a SQL Server database.

Workaround Before Fix: None.

Files Updated:

- Cobra.WinUI.*.dll
- Cobra.WinUI.exe
- Cobra.Process.dll

Defect 2002220

Description: When you ran the Reclass Wizard and the source or target class did not exist in Cobra, the "Unable to determine <to/from> class level" error displayed in the process log did not sufficiently describe the scenario.

Customers Impacted: This defect affects customers using the Reclass Wizard.

Workaround Before Fix: None.

Additional Notes: When the described scenario occurs, the process log now displays the "Unable <to/from> find the source class to determine the class level" error.

Files Updated:

- Cobra.WinUI.*.dll
- Cobra.WinUI.exe
- Cobra.Process.dll

Projects » Project View

Defect 838207

Description: When you ran the Recalc Wizard with the **Prevent editing of historical time-phased values project preference** option selected, Cobra allowed you to respread all the periods rather than making sure you could just recalculate the remaining periods.

Customers Impacted: This defect affects customers using the Recalc Wizard with the **Prevent editing of historical time-phased values project preference** option selected.

Workaround Before Fix: None.

Files Updated:

- Cobra.Model.dll
- Cobra.WinUI.Projects.dll

Security Enhancements

There are no security enhancements in this release.

Database Changes

There are no database changes in this release.

Data Changes

There are no data changes in this release.

Documentation Changes

This section includes details of section changes in the printed documentation that are in addition to any enhancements.

Document	Details
Deltek Cobra 8.4 Help System	<ul style="list-style-type: none">▪ Added the "Integration Wizard-Getting Started" video to the following topics:<ul style="list-style-type: none">▪ Integration Configuration Page of the Integration Wizard

Document	Details
	<ul style="list-style-type: none"> ▪ Change Control Page of the Integration Wizard ▪ Integration Wizard-Scheduling Tools and Files ▪ Added the “Importing the Progress Technique from the Schedule” video to the following topics: <ul style="list-style-type: none"> ▪ Progress Page of the Integration Wizard-Scheduling Tools ▪ Data Import from Open Plan ▪ Integration Wizard-Scheduling Tools and Files <div style="border: 1px solid #0070C0; padding: 5px; margin: 10px 0;"> <p>Note: Refer to the “Video” section of each topic.</p> </div> <ul style="list-style-type: none"> ▪ Updated the description of Load Progress Technique from Schedule in the Progress Page of the Integration Wizard-Scheduling Tools topic ▪ Created the following topics to better explain the data import using import files: <ul style="list-style-type: none"> ▪ Import File for Loading Activity and Resource Assignment Data ▪ Import File Loading Considerations ▪ Load an Import File with Activity and Resource Assignment Data

Cobra 8.4 Cumulative Update 26

Released: August 31, 2023

Note: The enhancements and software issues resolved in this release will be included in a Cobra 8.5 Cumulative Update release. Refer to the latest [Deltek Cobra 8.5 Cumulative Update Release Notes](#).

Enhancements

There are no enhancements in this release.

Software Issues Resolved

This section includes software issues resolved in this release.

[File » Integration wInsight](#)

Defect 1985410

Description: When you ran the wInsight Wizard, created a new configuration, and navigated to the Element of Cost page, the **Other** option was disabled.

Customers Impacted: This defect affects customers who use the wInsight Wizard.

Workaround Before Fix: On the Configuration page, select the **Open an existing configuration** option first, and then select the **Create a new configuration** option.

Files Updated:

- Cobra.WinUI.Processes.dll

[File » Integration Wizard-Actual Costs](#)

Defect 786506

Description: When you ran the Integration-Actual Cost Wizard, the **Project** column on the Field Mapper page displayed only for master projects and not for individual projects.

Customers Impacted: This defect affects customers who use the Integration-Actual Cost Wizard.

Workaround Before Fix: Create a master project and include all the individual projects.

Files Updated:

- Cobra.WinUI.*.dll
- Cobra.WinUI.exe

[File » Integration Wizard-Project Data](#)

Defect 1884117

Description: When you ran the Integration Wizard and loaded an import file where one of the field values contained a comma, Cobra regarded the commas as extra fields and loaded the data incorrectly.

Customers Impacted: This defect affects customers who use the Integration Wizard.

Workaround Before Fix: Remove the commas in the import file before running the Integration Wizard.

Additional Notes: This was fixed as part of Defect 1912287 in Cobra 8.4 Cumulative Update 24.

Files Updated:

- N/A

Defect 1897090

Description: When you ran the Integration Wizard to load an import file, Cobra did not load code values containing commas.

Customers Impacted: This defect affects customers who use the Integration Wizard.

Workaround Before Fix: Remove the commas in the code values before running the integration.

Additional Notes: This was fixed as part of Defect 1912287 in Cobra 8.4 Cumulative Update 24.

Files Updated:

- N/A

Installation

Defect 1982813

Description: When you performed either a workstation admin or server installation, Cobra might fail to install the Visual C++ 2017 Runtime x86 component, resulting in an ActiveX error.

Customers Impacted: This defect affects customers who perform a workstation admin or server installation of Cobra.

Workaround Before Fix: Download and install the Runtime x86 component manually from Microsoft Visual C++ Redistributable latest supported downloads.

Files Updated:

- DeltekCobra84.exe

Project Processes » Calculate Forecast

Defect 1743276

Description: When you ran the Calculate Forecast Wizard, Cobra did not calculate the non-labor resources correctly and instead updated them with zero values if all the following conditions were met:

- The **Scale Retain EAC** field on the Options page was set to **Hours and Currency**.
- The project had a work package without resource assignments that used Hours.
- Hours EAC was greater than zero but less than the total actual costs.

Customers Impacted: This defect affects customers who use the Calculate Forecast Wizard.

Workaround Before Fix: Run the Calculate Forecast Wizard twice. Set the **Scale Retain EAC** field to **Hours** on the first run and then to **Currency** on the second run.

Files Updated:

- Cobra.Process.dll

Project Processes » Project Audit

Defect 474121

Description: When you used the Copy To function to copy a control account into a different control account in the target project and the target project was different from the source project, Cobra created a log entry for the source project, although there were no budget changes made to it.

Customers Impacted: This defect affects customers who use the Copy To function to copy control accounts.

Workaround Before Fix: Turn off the source project log prior to running the Copy To function, and then turn it on once the process completes.

Files Updated:

- Cobra.WinUI.*.dll
- Cobra.WinUI.exe
- Cobra.Process.dll

Project Processes » Reclass

Defect 1431042

Description: When you ran the Reclass Wizard against a code file with codes containing an open bracket ([]) and selected the **Include all children** option on the Criteria page, Cobra did not reclass those records for the selected code file.

Customers Impacted: This defect affects customers who use the Reclass Wizard on a SQL Server database.

Workaround Before Fix: None.

Files Updated:

- Cobra.WinUI.*.dll
- Cobra.WinUI.exe
- Cobra.Process.dll

Security Enhancements

There are no security enhancements in this release.

Database Changes

There are no database changes in this release.

Data Changes

There are no data changes in this release.

Documentation Changes

This section includes details of section changes in the printed documentation that are in addition to any enhancements.

Document	Details
Deltek Cobra 8.4 Help System	<ul style="list-style-type: none"> Updated the description of the following options in the Change Control Page of the Integration Wizard topic <ul style="list-style-type: none"> Get the Control Account description from Apply historical budget changes as an adjusting entry in the current status period Force existing Work Package dates to match the schedule for List deleted items in the process log Updated the description of the Delete only items that satisfy the selection criteria option in the Filter Page of the Integration Wizard - Scheduling Tools topic Updated the description of the Project Keys Tab, CAM (in Schedule Fields), and Cobra File Used for Validation options in the following topics: <ul style="list-style-type: none"> Schedule Mapping Page of the Integration Wizard - MS Project Schedule Mapping Page of the Integration Wizard - Open Plan Schedule Mapping Page of the Integration Wizard - Primavera Updated the description of the Load milestone weights option in the Progress Page of the Integration Wizard - Scheduling Tools topic Updated the Reconcile Milestone Weight Variance Dialog Box topic
<i>Deltek Cobra 8.4 Installation Guide</i>	<ul style="list-style-type: none"> Updated instances of "Visual C++ 2017 Redistributable Package (x86)" with "Microsoft Visual C++ Redistributable Packages for Visual Studio 2015-2022 (x86)"
<i>Deltek Cobra 8.4 Technical Overview and System Requirements</i>	<ul style="list-style-type: none"> Updated instances of "Visual C++ 2017 Redistributable Package (x86)" with "Microsoft Visual C++ Redistributable Packages for Visual Studio 2015-2022 (x86)"

Cobra 8.4 Cumulative Update 25

Released: July 28, 2023

Note: The enhancements and software issues resolved in this release will be included in a Cobra 8.5 Cumulative Update release. Refer to the latest [Deltek Cobra 8.5 Cumulative Update Release Notes](#).

Enhancements

This section includes enhancements in this release.

Improved Performance When Creating BCR Snapshots

The BCR snapshot process now runs faster for a Template project that contains large ancillary files and for a sandbox project with a significant number of activities. The BCR snapshot process is a Cobra process that PM Compass utilizes for the BCR Analysis report.

Software Issues Resolved

This section includes software issues resolved in this release.

File » Integration wInsight

Defect 1956634

Description: When you ran the wInsight Wizard, selected an existing configuration file with invalid values on the Configuration page, and clicked the **Finish** button, Cobra displayed the Process Complete page with errors instead of the Wizard page where the error was found.

Customers Impacted: This defect affects customers who use the wInsight Wizard.

Workaround Before Fix: Click the **Next** button on the succeeding page until the Process Complete page.

Files Updated:

- Cobra.WinUI.Processes.dll

Project Processes » Apportionment

Defect 1420011

Description: When you ran the Apportionment Calculation Wizard to run concurrent apportionment calculations and two processes started at exactly the same time, Cobra created multiple records with the same unique row ID in the database table.

Customers Impacted: This defect affects customers who use the concurrent apportionment calculations feature on large projects.

Workaround Before Fix: None.

Files Updated:

- Cobra.Process.dll

Project Processes » Calculate Forecast

Defect 1873476

Description: When you ran the Calculate Forecast Wizard and selected the **Send to process server** option on the Run page and the **Slip all invalid dates that are earlier than the status date - Forecast, Early, or Late** option on the Options page, Cobra did not slip the work package-level dates correctly.

Customers Impacted: This defect affects customers who use the concurrent forecast calculations feature.

Workaround Before Fix: None.

Files Updated:

- Cobra.Process.dll

Project Processes » Project Audit

Defect 1848218

Description: When you modified time-phased budget data and the **Round audit log transactions to 6 decimal places** option on the Other Tab of the Application Preferences dialog box was not selected, the Audit Log Comparison page of the Project Audit Wizard displayed that the project log disagreed with the project header even when they matched.

Customers Impacted: This defect affects all customers.

Workaround Before Fix: Run the Project Audit Wizard and select the **Reconcile the project audit log to the current budget** option on the Log Operation page.

Files Updated:

- Cobra.WinUI.*.dll
- Cobra.WinUI.exe
- Cobra.Process.dll

Projects » Project View

Defect 905138

Description: When you used **Save As** to save a project using a name that already existed in PM Compass, Cobra did not display a validation error.

Customers Impacted: This defect affects customers who use **Save As** on projects.

Workaround Before Fix: None.

Files Updated:

- Cobra.Model.dll
- Cobra.Model.LoginManager.dll
- Cobra.WinUI.*.dll
- Cobra.WinUI.exe

Tools » Align Time-phased Dates

Defect 1923219

Description: When you ran the Align Time-phased Dates Wizard against a project with very large time-phased data row counts, Cobra crashed with the "Cobra has stopped working" error.

Customers Impacted: This defect affects customers who change the fiscal calendar periods and run the Align Time-phased Dates process against projects containing very large time-phased data row counts.

Workaround Before Fix: None.

Files Updated:

- Cobra.Process.dll

Security Enhancements

There are no security enhancements in this release.

Database Changes

There are no database changes in this release.

Data Changes

There are no data changes in this release.

Documentation Changes

This section includes details of section changes in the printed documentation that are in addition to any enhancements.

Document	Details
Deltek Cobra 8.4 Help System	<ul style="list-style-type: none"> ▪ Updated the topic for the Project View tabs to display the Project View topic regardless of the selected tab ▪ Updated the Reclass by a specific date range description in the Date Range Page of the Reclass Wizard topic ▪ Updated the Recalc costs in a specific date range description in the Date Range Page of the Recalc Wizard topic ▪ Updated the Zero-out values in a specific date range description in the Date Range Page of the Zero Out Data Wizard topic ▪ Updated the By a specific data range description in the Calculation Range Page of the Apportionment Calculation Wizard topic ▪ Added related video to the following topics: <ul style="list-style-type: none"> ▪ Add Control Account Dialog Box ▪ Add Work Package Dialog Box ▪ Add Resource Assignment Dialog Box

Document	Details
	<ul style="list-style-type: none"> ▪ Assignment Import/Assignment Export ▪ Calendar Selection Page of the Export Calendar to Open Plan Wizard ▪ Calendar Export to Open Plan ▪ Data Import from Open Plan ▪ Data Import Using Scheduling Tools ▪ Export and Import Time-Phased Resource Assignments ▪ Prepare the Open Plan Schedule ▪ Project Selection Page of the Assignment Import/Assignment Export Wizard ▪ Project View ▪ Schedule Mapping Page of the Integration Wizard-Open Plan <div data-bbox="464 800 1403 884"> <p>Note: Refer to the “Video” section of each topic.</p> </div> <ul style="list-style-type: none"> ▪ Created the Cobra Videos topic to house all Cobra videos
<p><i>Deltek Cobra 8.4 Cumulative Update 24 Release Notes</i></p>	<ul style="list-style-type: none"> ▪ Added Defect 1273430 to the Software Issues Resolved section

Cobra 8.4 Cumulative Update 24

Released: June 30, 2023

Enhancements

There are no enhancements in this release.

Software Issues Resolved

This section includes software issues resolved in this release.

[File » Integration wInsight](#)

Defect 1859942

Description: When you ran the wInsight Wizard, the saved value for the **Code on resource** field from the configuration file was not correctly displayed on the Element of Cost page.

Customers Impacted: This defect affects customers who use the wInsight Wizard.

Workaround Before Fix: None.

Files Updated:

- Cobra.Model.dll
- Cobra.Resources.dll
- Cobra.WinUI.Processes.dll

[File » Integration Wizard-Project Data](#)

Defect 1912287

Description: When you tried to load codes using the Integration Wizard against a control account or work package and the import file contained a comma in the code value, Cobra did not correctly import the code containing the comma.

Customers Impacted: This defect affects all customers.

Workaround Before Fix: Remove the comma in the work package name or value.

Files Updated:

- Cobra.Process.dll

Defect 1914553

Description: When you ran the Integration Wizard and selected the **List deleted items in the process log** option on the Change Control page, the process log displayed the internal IDs of the deleted items instead of the actual control account (CA) and work package (WP) IDs.

Customer Impacted: This defect affects customers who use the Integration Wizard.

Workaround Before Fix: None.

Files Updated:

- Cobra.WinUI.*.dll
- Cobra.WinUI.exe
- Cobra.Process.dll

Help

Defect 1487547

Description: The "Configure Windows Authentication in an N-Tier Deployment" topic included steps to configure the service parameters.

Customers Impacted: This defect affects all customers.

Workaround Before Fix: None.

Additional Notes: The "[Configure Windows Authentication in an N-Tier Deployment](#)" topic has been updated to remove the information about configuring the service parameters.

Files Updated:

- Configure Windows Authentication in an N Tier Deployment.html

Project Processes » Calculate Forecast

Defect 1632595

Description: When you ran the Calculate Forecast Wizard with a forecast class that used the Coded Ranges forecast method with future periods mapped to a Manual Forecast (Retain EAC) forecast method, Cobra deleted the resources instead of retaining the future periods.

Customers Impacted: This defect affects customers who use the Manual Forecast (Retain EAC) with Coded Ranges method.

Workaround Before Fix: None.

Files Updated:

- Cobra.Process.dll

Defect 1825316

Description: When you updated the forecast finish date and did not respread the forecast time-phased periods and then ran the Calculate Forecast Wizard, Cobra did not correctly include the last time-phased spread period if both the original and new finish dates were within the same fiscal period.

Customers Impacted: This defect affects customers who use the Calculate Forecast Wizard after updating the forecast finish date.

Workaround Before Fix: None.

Files Updated:

- Cobra.Process.dll

Tools » Zero-out Data

Defect 1494107

Description: When you ran the Zero-Out Data Wizard and specified a date range on the Date Range page, Cobra did not use the period's start date specified in the **From** field.

Customers Impacted: This defect affects customers who use the Zero-Out Data Wizard.

Workaround Before Fix: None.

Files Updated:

- Cobra.WinUI.*.dll
- Cobra.WinUI.exe
- Cobra.Model.dll
- Cobra.Model.LoginManager.dll

Defect 1273430

Description: When you ran the Zero-Out Data Wizard, some values that fell within the selected date range were not zeroed out.

Customers Impacted: This defect affects customers who use the Zero-Out Data Wizard.

Workaround Before Fix: None.

Files Updated:

- Cobra.WinUI.*.dll
- Cobra.WinUI.exe
- Cobra.Model.dll
- Cobra.Model.LoginManager.dll

Security Enhancements

There are no security enhancements in this release.

Database Changes

There are no database changes in this release.

Data Changes

There are no data changes in this release.

Documentation Changes

This section includes details of section changes in the printed documentation that are in addition to any enhancements.

Document	Details
Deltek Cobra 8.4 Help System	<ul style="list-style-type: none"> Added a new topic "How Cobra Uses the Early and Late Dates" Added related video to the following topics: <ul style="list-style-type: none"> Add a Resource to a Resource File Export and Import Time-Phased Resource Assignments New Resource File Wizard Project Selection Page of the Assignment Import/Assignment Export Wizard Project View Resources Resource View <div> <p>Note: Refer to the "Video" section of each topic.</p> </div> <ul style="list-style-type: none"> Updated the following topics with references to using CSV format in an import file: <ul style="list-style-type: none"> Data Formats Data Import — Apportionment Definition Data Import — Apportionment Mapping File Format for Importing Apportionment Definition
<i>Deltek Cobra 8.4 Installation Guide</i>	<ul style="list-style-type: none"> Updated the text format in "Appendix L Performing Silent Installation/Uninstallation of Cobra" Added a note to the Database Tier bullet in the "Logical Tiers" section
<i>Deltek Cobra 8.4 Technical Overview and System Requirements Guide</i>	<ul style="list-style-type: none"> Added a note to the Database Tier bullet in the "Logical Tiers Overview" section

Cobra 8.4 Cumulative Update 23

Released: May 5, 2023

Enhancements

There are no enhancements in this release.

Software Issues Resolved

This section includes software issues resolved in this release.

[File » Integration Wizard-Project Data](#)

Defect 1908261

Description: When you ran the Integration-Primavera Wizard with the **Criteria** field on the Filter page set to **Work Package**, and Primavera P6 was running on Oracle, Cobra did not load the work packages.

Customers Impacted: This defect affects customers who load code assignments.

Workaround Before Fix: Change the **Criteria** field to **Total Project**.

Files Updated:

- Cobra.WinUI.*.dll
- Cobra.WinUI.exe
- Cobra.Process.dll

[Project Processes » Reclass](#)

Defect 1922658

Description: When you ran the Reclass Wizard and the Source Class page was set to **Copy and Delete** and to a source class that was part of the EAC class, Cobra did not recalculate the control account and work package EAC values.

Customers Impacted: This defect affects customers who use the Reclass process.

Workaround Before Fix: When any of the EAC classes are updated after the Reclass process, run the Update Totals.

Files Updated:

- Cobra.WinUI.*.dll
- Cobra.WinUI.exe
- Cobra.Process.dll

Security Enhancements

There are no security enhancements in this release.

Database Changes

There are no database changes in this release.

Data Changes

There are no data changes in this release.

Documentation Changes

This section includes details of section changes in the printed documentation that are in addition to any enhancements.

Document	Details
Deltek Cobra 8.4 Help System	<ul style="list-style-type: none"> Updated the Rolling Wave Calendar description in the Options Page of the Advance Calendar Wizard topic Created/updated the following topics for the Custom Hooks feature: <ul style="list-style-type: none"> Custom Hooks Custom Hooks Parameters Customization of Processes Customization of Integration Processes Set Up Custom Applications Improved the description of "Load daily time-phased data" in the following topics: <ul style="list-style-type: none"> New Connection Dialog Box of the Integration Wizard-Primavera Resource Assignments Page of the Integration Wizard-Primavera Included "IPMDAR" in the Result Code description in the Results Tab of the Resource File Properties Dialog Box topic
<i>Deltek Cobra 8.4 Installation Guide</i>	<ul style="list-style-type: none"> Added "Appendix L Performing Silent Installation/Uninstallation of Cobra" Updated areas where Data Type Compatibility is mentioned and specified that the parameter should be set to either 0 or blank

Cobra 8.4 Cumulative Update 22

Released: March 31, 2023

Enhancements

There are no enhancements in this release.

Software Issues Resolved

This section includes software issues resolved in this release.

[File » Integration Wizard-Project Data](#)

Defect 1851328

Description: When you loaded an existing configuration using the Integration Wizard, Cobra sometimes encountered the "File access denied" error for tmpNopmDt.DBF.

Customers Impacted: This defect affects customers who use the Integration Wizard.

Workaround Before Fix: None.

Files Updated:

- Cobra.WinUI.*.dll
- Cobra.WinUI.exe
- Cobra.Process.dll

Security Enhancements

There are no security enhancements in this release.

Database Changes

There are no database changes in this release.

Data Changes

There are no data changes in this release.

Documentation Changes

There are no documentation changes in this release.

Cobra 8.4 Cumulative Update 21

Released: February 24, 2023

Enhancements

There are no enhancements in this release.

Software Issues Resolved

This section includes software issues resolved in this release.

[Project Processes » Calculate Progress](#)

Defect 1873956

Description: In certain conditions, after upgrading from Cobra 8.3 to Cobra 8.4, the Calculate Progress process performance was impacted.

Customers Impacted: This defect affects customers who use the Calculate Progress process.

Workaround Before Fix: None.

Files Updated:

- Cobra.Process.dll

[Projects » Project View](#)

Defect 1160717

Description: When you extended the Early, Forecast, or Late dates outside the fiscal calendar, Cobra did not display a validation message that it was not allowed.

Customers Impacted: This defect affects all customers.

Workaround Before Fix: None.

Files Updated:

- Cobra.Model.dll
- Cobra.Resources.dll
- Cobra.WinUI.Projects.dll

[Tools » Preferences](#)

Defect 602201

Description: When you logged into a different data source using the Login dialog box while still being logged into Cobra, the Application Preferences dialog box did not contain the preferences of the currently selected data source.

Customers Impacted: This defect affects customers who use the Application Preferences dialog box.

Workaround Before Fix: Relaunch Cobra and select the data source to use upon login.

Files Updated:

- Cobra.Model.dll
- Cobra.Model.LoginManager.dll
- Cobra.WinUI.exe
- Cobra.WinUI.*.dll

Security Enhancements

There are no security enhancements in this release.

Database Changes

There are no database changes in this release.

Data Changes

There are no data changes in this release.

Documentation Changes

This section includes details of section changes in the printed documentation that are in addition to any enhancements.

Document	Details
<i>Deltek Cobra 8.4 Cumulative Update 20 Release Notes</i>	<ul style="list-style-type: none"> ▪ Updated the description of Defect 1756056
<i>Deltek Cobra 8.4 Installation Guide</i>	<ul style="list-style-type: none"> ▪ Replaced “logical core” with “logical processor” in the “Hardware Requirements” section
<i>Deltek Cobra 8.4 Technical Overview and System Requirements</i>	<ul style="list-style-type: none"> ▪ Replaced “logical core” with “logical processor” in the “Hardware Requirements” section

Cobra 8.4 Cumulative Update 20

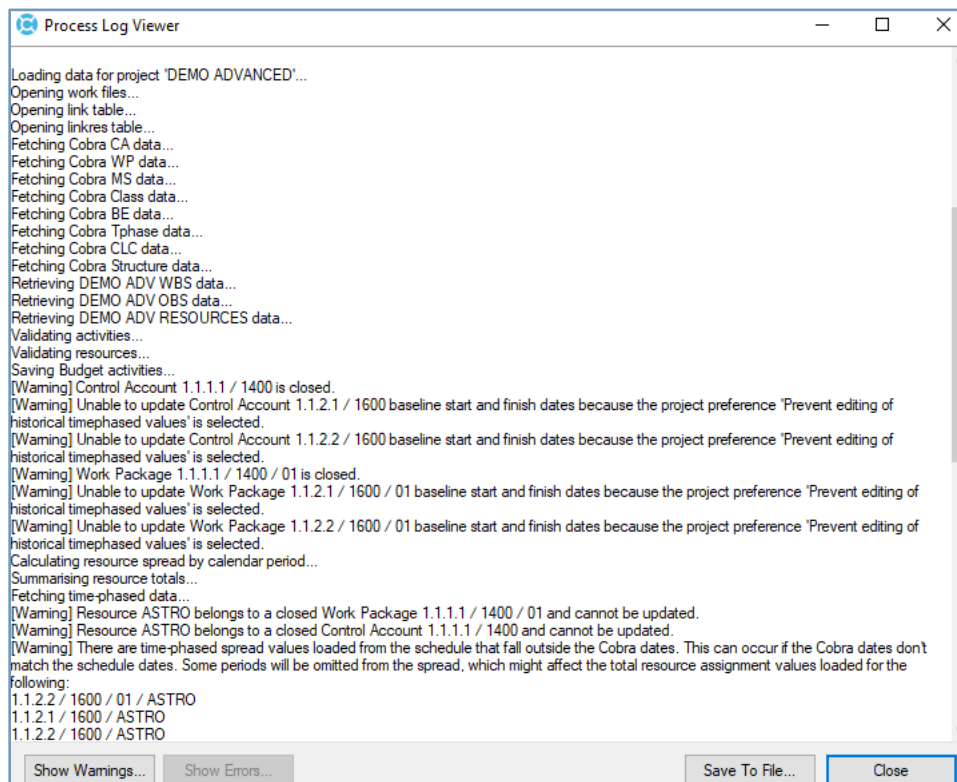
Released: February 3, 2023

Enhancements

This section includes enhancements in this release.

Logging Implementation Update During Integration

When you run the Integration Wizard against a project with control accounts and/or work packages whose baseline start and/or finish dates are set prior to the status date and whose **Prevent editing of historical time phased values** option is selected on the Project-Preferences tab Project Properties dialog box, Cobra now creates a process log entry indicating that the baseline start and/or finish dates are set prior to the status date.



Process Log Viewer Dialog Box

Support for PM Compass 8.3

Cobra now supports PM Compass 8.3, beginning with Cumulative Update 19.

Note: This information is documented in the “System Requirements” section of the *Deltek Cobra 8.4 Installation Guide* and *Deltek Cobra 8.4 Technical Overview and System Requirements Guide*.

Software Issues Resolved

This section includes software issues resolved in this release.

[File » Integration Wizard-Ancillary Data](#)

Defect 1739498

Description: When you ran the Integration-Ancillary Data Wizard to load codes or resources, Cobra imported invalid code fields.

Customers Impacted: This defect affects customers who use the Integration-Ancillary Data Wizard.

Workaround Before Fix: None.

Files Updated:

- Cobra.WinUI.*.dll
- Cobra.WinUI.exe
- Cobra.Process.dll

[File » Integration Wizard-Project Data](#)

Defect 1756056

Description: When you ran the Integration Wizard to load data from an activity and resource assignment file or from Open Plan or Primavera P6, and you clicked the **Next** button on each Wizard page, Cobra encountered the "Unhandled Exception" error.

Customers Impacted: This defect affects customers who use the Integration Wizard on an n-tier deployment.

Workaround Before Fix: On the Integration Configuration page, select the integration configuration file, and click the **Finish** button.

Files Updated:

- Cobra.WinUI.*.dll
- Cobra.WinUI.exe
- Cobra.Model.dll
- Cobra.Model.LoginManager.dll

Defect 1837944

Description: When you ran the Integration Wizard to load milestones and the **Allow entering milestones regardless of Progress Technique** option on the Project-Preferences tab of the Project Properties dialog box was cleared, Cobra changed the progress technique to **Milestones** but did not display any warning message in the process log.

Customers Impacted: This affects customers who load milestones using the Integration Wizard.

Workaround Before Fix: None.

Files Updated:

- Cobra.Process.dll

Security Enhancements

There are no security enhancements in this release.

Database Changes

There are no database changes in this release.

Data Changes

There are no data changes in this release.

Documentation Changes

This section includes details of section changes in the printed documentation that are in addition to any enhancements.

Document	Details
Deltek Cobra 8.4 Help System	<ul style="list-style-type: none"> Updated the Reclass Guidelines topic

Cobra 8.4 Cumulative Update 19

Released: December 9, 2022

Enhancements

This section includes enhancements in this release.

Append End of Day Time to Time-phased Resource Assignments During Open Plan Calendar Export

When running the Export Calendar to Open Plan Wizard to export a calendar to Open Plan for use as a reporting calendar, Cobra now appends the end of day time to the time-phased resource assignments following these rules:

- If exporting calendar dates to an Open Plan fiscal calendar, Cobra will read the default stop time specified in Open Plan and add it as time during calendar export. For example, if the default stop time is 16:00, Cobra will export 29-Mar-2025 4:00pm as the date in Open Plan.
- If the default stop time is 24:00, Cobra will load the fiscal calendar date +1 day. For example, if the day is 29-Mar-2025, Cobra will load it as 30-Mar-2025 12:00am.
- If the default time is not found in the Open Plan, Cobra will default to 11:59pm.

Note: This information is documented in the [“Calendar Export to Open Plan”](#) topic in the Deltek Cobra Help System.

Support for Primavera P6 21.12

Cobra now supports Primavera® P6 21.12.

Note: This information is documented in the “System Requirements” section of the *Deltek Cobra 8.4 Installation Guide* and *Deltek Cobra 8.4 Technical Overview and System Requirements Guide*.

Software Issues Resolved

This section includes software issues resolved in this release.

File » Integration Wizard-Project Data

Defect 249222

Description: When you ran the Integration Wizard to import a CSV file that contained header rows and used the European date format (dd/mm/yyyy), Cobra did not import the dates correctly.

Customers Impacted: This defect affects customers who import a CSV file that uses the European date format.

Workaround Before Fix: Remove the header rows in the CSV file.

Files Updated:

- Cobra.Process.dll

Defect 1481691

Description: When you ran the Integration Wizard to load only forecast data from an import file, and the **Force existing Work Package dates to match the schedule for: Forecast** option on the Change Control page was selected, the baseline dates of the work packages were changed.

Customers Impacted: This defect affects customers who use the Integration Wizard to load forecast data.

Workaround Before Fix: None.

Files Updated:

- Cobra.Process.dll

[Projects » Project View](#)

Defect 1748090

Description: When you added a control account or a work package to a project, and the **Prevent editing of historical time phased values** option on the Project-Preferences tab of the Project Properties dialog box was selected, the date validation was incorrect.

Customers Impacted: This defect affects customers who use the **Prevent editing of historical time phased values** option.

Workaround Before Fix: None.

Files Updated:

- Cobra.Model.dll

[Security Enhancements](#)

There are no security enhancements in this release.

Database Changes

There are no database changes in this release.

Data Changes

There are no data changes in this release.

Documentation Changes

This section includes details of section changes in the printed documentation that are in addition to any enhancements.

Document	Details
<i>Delttek Cobra Data Structure Guide</i>	<ul style="list-style-type: none"> ▪ Updated the guide to include the Cobra tables and their description and structures

Cobra 8.4 Cumulative Update 18

Released: October 28, 2022

Enhancements

This section includes enhancements in this release.

Cobra Web Service Update

The [Get Environment Details](#) method has been updated to support checking of information related to the Cobra environment when using the Concurrency feature.

Software Issues Resolved

This section includes software issues resolved in this release.

File » Integration Wizard-Project Data

Defect 1622288

Description: When you ran the Integration-Primavera Wizard to load code assignments from Primavera, Cobra did not filter the loaded values based on the filter selections in the **Criteria** field or the **Filter activities loaded from the schedule** option on the Filter page.

Customers Impacted: This defect affects customers who load code assignments and filter the values on the Integration-Primavera Wizard.

Workaround Before Fix: None.

Files Updated:

- Cobra.Process.dll

Defect 1755891

Description: When you ran the Integration Wizard to load control account level-code assignments, Cobra would only populate the control account-level values if there were code assignments loaded at the control account level. Previously, control account-level code assignments would be loaded using the work package-level code assignments.

Customers Impacted: This defect affects customers who use the Integration Wizard to load control account level-code assignments.

Workaround Before Fix: Load code assignments at the control account level by defining a separate activity with an empty work package key field value in the schedule.

Files Updated:

- Cobra.Process.dll

Defect 1811373

Description: If you upgraded MSP Server version 2013 to 2016 or higher, the database information sometimes contained information related to the old version, which could cause data loading issues when you used the MS Project-Integration Wizard.

Customers Impacted: This defect affects customers who upgrade MSP Server version 2013 to 2016 or higher and use the Integration Wizard.

Workaround Before Fix: None.

Files Updated:

- Cobra.Process.dll

Defect 1616046

Description: When you ran the Integration Wizard to import control accounts and the **Check Control Account field 1/2/3 structure for parent/child uniqueness** option on the Project-Preferences tab of the Project Properties dialog box was selected, Cobra ignored the option.

Customers Impacted: This defect affects customers who use the Integration Wizard.

Workaround Before Fix: None.

Files Updated:

- Cobra.WinUI.*.dll
- Cobra.WinUI.exe
- Cobra.Process.dll

Installation

Defect 1491872

Description: When you installed Cobra on a non-default location in a server type deployment, the config.dat file was not created, and the installation log displayed checks that were not found.

Customers Impacted: This defect affects n-tier customers who install Cobra on a non-default location in a server type deployment.

Workaround Before Fix: To have a working Cobra 8.4 in a server type deployment, install Cobra 8.2 Cumulative Update 27 first, and then upgrade to Cobra 8.4 Cumulative Update 03.

Files Updated:

- DeltekCobra84.exe

Reports » Reports

Defect 161919

Description: When you ran a Project Data report using any filter, the generated report displayed project-level values in the control account rows.

Customers Impacted: This defect affects all customers.

Workaround Before Fix: None.

Files Updated:

- Cobra.Model.dll
- Cobra.Model.LoginManager.dll
- Cobra.WinUI.*.dll

-
- Cobra.WinUI.exe

Security Enhancements

There are no security enhancements in this release.

Database Changes

There are no database changes in this release.

Data Changes

There are no data changes in this release.

Documentation Changes

This section includes details of section changes in the printed documentation that are in addition to any enhancements.

Document	Details
Deltek Cobra 8.4 Help System	<ul style="list-style-type: none">▪ Updated the Spread Dialog Box help topic to remove a misleading statement in the Use spread curve field description
<i>Deltek Cobra 8.4 Installation Guide</i>	<ul style="list-style-type: none">▪ Added the “Error Encountered When Using ODBC Driver 18 for SQL Server” section

Cobra 8.4 Cumulative Update 17

Released: September 30, 2022

Enhancements

This section includes enhancements in this release.

BCR Analysis Report Template Update

Previously, the “Is There a Change/Deletion?” column was placed inside of the Change Request sections in the BCR Analysis report.

Now, when you generate the BCR Analysis report using the BCRAnalysis.xlsx template, the “Is There a Change/Deletion?” column is displayed after the Stage column on the Summary tab, making it more visible to the users.

Project	Change Number	Stage	Is There a Change/Deletion?	Control Account Manager	WBS	OBS	CA_ID	Control Account Description	Work P
LMA Sub4_BCR02_MOD	BCR04020721	In-progress	Y	JACK DAWSON	3.1.2	1.MF	3000	Editing actual/forecast dates by loading Status into Cobra to	
LMA Sub4_BCR02_MOD	BCR04020721	In-progress	Y	JACK DAWSON	3.1.2	1.MF	3000	Editing actual/forecast dates by loading Status 3.1.2.1	
LMA Sub4_BCR02_MOD	BCR04020721	In-progress	Y	JACK DAWSON	3.1.2	1.MF	3000	Editing actual/forecast dates by loading Status 3.1.2.1	
LMA Sub4_BCR02_MOD	BCR04020721	In-progress	Y	JACK DAWSON	3.1.2	1.MF	3000	Editing actual/forecast dates by loading Status 3.1.2.1	
LMA Sub4_BCR02_MOD	BCR04020721	In-progress	Y	JACK DAWSON	3.1.2	1.MF	3000	Editing actual/forecast dates by loading Status 3.1.2.1	
LMA Sub4_BCR02_MOD	BCR04020721	In-progress	Y	JACK DAWSON	3.1.2	1.MF	3000	Editing actual/forecast dates by loading Status 3.1.2.10	
LMA Sub4_BCR02_MOD	BCR04020721	In-progress	Y	JACK DAWSON	3.1.2	1.MF	3000	Editing actual/forecast dates by loading Status 3.1.2.10	
LMA Sub4_BCR02_MOD	BCR04020721	In-progress	Y	JACK DAWSON	3.1.2	1.MF	3000	Editing actual/forecast dates by loading Status 3.1.2.11	
LMA Sub4_BCR02_MOD	BCR04020721	In-progress	Y	JACK DAWSON	3.1.2	1.MF	3000	Editing actual/forecast dates by loading Status 3.1.2.11	
LMA Sub4_BCR02_MOD	BCR04020721	In-progress	Y	JACK DAWSON	3.1.2	1.MF	3000	Editing actual/forecast dates by loading Status 3.1.2.11	
LMA Sub4_BCR02_MOD	BCR04020721	In-progress	Y	JACK DAWSON	3.1.2	1.MF	3000	Editing actual/forecast dates by loading Status 3.1.2.12	
LMA Sub4_BCR02_MOD	BCR04020721	In-progress	Y	JACK DAWSON	3.1.2	1.MF	3000	Editing actual/forecast dates by loading Status 3.1.2.12	
LMA Sub4_BCR02_MOD	BCR04020721	In-progress	Y	JACK DAWSON	3.1.2	1.MF	3000	Editing actual/forecast dates by loading Status 3.1.2.12	
LMA Sub4_BCR02_MOD	BCR04020721	In-progress	Y	JACK DAWSON	3.1.2	1.MF	3000	Editing actual/forecast dates by loading Status 3.1.2.13	
LMA Sub4_BCR02_MOD	BCR04020721	In-progress	Y	JACK DAWSON	3.1.2	1.MF	3000	Editing actual/forecast dates by loading Status 3.1.2.13	
LMA Sub4_BCR02_MOD	BCR04020721	In-progress	Y	JACK DAWSON	3.1.2	1.MF	3000	Editing actual/forecast dates by loading Status 3.1.2.13	

Sample Generated BCR Analysis Report Using the Updated BCRAnalysis.xlsx Template

Support for Acumen 8.8

Cobra now supports Acumen 8.8.

Note: This information is documented in the “System Requirements” section of the *Deltek Cobra 8.4 Installation Guide* and *Deltek Cobra 8.4 Technical Overview and System Requirements Guide*.

Software Issues Resolved

This section includes software issues resolved in this release.

[File » Integration Wizard-Actual Costs](#)

Defect 1652155

Description: When you ran the Integration-Actual Cost Wizard, Cobra encountered the following error if there was a control account that has the same naming convention as the control account/work package combo being imported: "The Control Account and Work Package keys being loaded into must be unique for the project."

Customers Impacted: This defect affects customers who use the Integration-Actual Cost Wizard.

Workaround Before Fix: None.

Files Updated:

- Cobra.WinUI.*.dll
- Cobra.WinUI.exe
- Cobra.Process.dll

[File » Restore](#)

Defect 1708423

Description: When you used a special character in the Oracle database password, the SQL Loader utility did not load the TPHASE, COSTELEM, AND BASEHIST data using **Autorun**.

Customers Impacted: This defect affects customers who use SQL Loader to restore and have the configuration option for **Autorun** set to **1**.

Workaround Before Fix: Use manual load for the SQL Loader utility and update the batch files by adding \" before and after the password. For example, \"p@ssword\".

Files Updated:

- Cobra.WinUI.*.dll
- Cobra.WinUI.exe
- Cobra.Process.dll

[Help](#)

Defect 1723319

Description: When you clicked the Help button on the Link to External Database page of the Data Tool Wizard, the corresponding help page did not display.

Customers Impacted: This defect affects customers who use Cobra with PM Compass.

Workaround Before Fix: None.

Files Updated:

- DataTool.UI.Base.dll

- DataTool.exe

Projects » Project View

Defect 1592858

Description: When you set the baseline dates of a control account or work package to or prior to the project's status date, and the **Prevent editing of historical time phased values** option on the Project-Preferences tab of the Project Properties dialog box was selected, Cobra allowed you to update the baseline dates in the Project view.

Customers Impacted: This defect affects customers who use the Project view.

Workaround Before Fix: None.

Files Updated:

- Cobra.WinUI.Projects.dll
- Cobra.Model.dll
- Cobra.Resources.dll

Security Enhancements

There are no security enhancements in this release.

Database Changes

There are no database changes in this release.

Data Changes

There are no data changes in this release.

Documentation Changes

This section includes details of section changes in the printed documentation that are in addition to any enhancements.

Document	Details
Deltek Cobra 8.4 Help System	<ul style="list-style-type: none"> ▪ Updated the Replan help topic to remove the statement that is purely opinion in the Budget beyond the Status Date section ▪ Added the default user ID and password to log onto Cobra and EPM SA to the following topics: <ul style="list-style-type: none"> ▪ Log Onto Cobra ▪ EPM Security Administrator Functions

Cobra 8.4 Cumulative Update 16

Released: August 31, 2022

Enhancements

This section includes enhancements in this release.

Cobra Web Service Updates

The following enhancements are made to the Cobra Web Service.

Checking Information Related to the Cobra Environment

The Cobra Web Service now supports the [Get Environment Details](#) method, which you use to check information related to the Cobra environment such as database version and application version.

Note: The [Get Environment Details](#) method is listed in the “Supported Operations” table of the [Supported Processes, Operations, and Data](#) topic in the Cobra Help System.

Filtering During Project Data Integration

To support filtering when running project data integration through the Cobra Web Service, the [Filter parameter](#) has been added to the [Integrate Project Data](#) method.

You can use the following values:

- **Criteria:** This value refers to the criterion to use for project integration process.
- **DeleteSelectionCriteriaItemsOnly:** This value specifies if the integration will delete only the items from Cobra that meet the criteria selected.
- **Selection:** This value refers to the criteria filter that controls the portion of the project to be integrated.

Note: The [Integrate Project Data](#) method is listed in the “Supported Operations” table of the [Supported Processes, Operations, and Data](#) topic in the Cobra Help System.

Attention: To display the Web Service Client API Help, click the following link: [Web Services Client API](#). You can also navigate to the \Help\API subfolder of your Cobra installation folder.

Support for New Products

Cobra now supports the following products:

- Microsoft Project Standard 2021
- Microsoft Project Professional 2021
- Microsoft Project Server 2021
- Microsoft SQL Server 2019 Enterprise Edition

- Microsoft Office 2021
- Deltek Open Plan 8.6

Note: These new products are documented in the “System Requirements” section of the *Deltek Cobra 8.4 Installation Guide* and *Deltek Cobra 8.4 Technical Overview and System Requirements Guide*.

Software Issues Resolved

This section includes software issues resolved in this release.

File » Integration Wizard-Ancillary Data

Defect 1602809

Description: When you ran the Integration-Ancillary Data Wizard, Cobra would update or overwrite the imported file even if another user used it.

Customers Impacted: This defect affects customers who use the Integration-Ancillary Data Wizard.

Workaround Before Fix: None.

Files Updated:

- Cobra.Process.dll

File » Integration Wizard-Project Data

Defect 1711783

Description: When you ran the Integration Wizard against a project with the **Allow changes to scope for an in-progress Control Account/Work Package** option on the Project-Preferences tab of the Project Properties dialog box selected, Cobra skipped loading of the resource assignments for in-progress control accounts and work packages but did not display a warning message.

Customers Impacted: This defect affects customers who use the Integration Wizard.

Workaround Before Fix: None.

Files Updated:

- Cobra.Process.dll

Defect 789837

Description: When you ran the MS Project-Integration Wizard to load Microsoft Project Server data, and the MSP project title contained special XML characters in the title, the Schedule Project Lookup dialog box was empty.

Customers Impacted: This defect affects customers who use the MS Project-Integration Wizard.

Workaround Before Fix: Remove the special XML characters from the project title.

Additional Notes: The same issue is encountered when loading Open Plan code fields and the code field description contains special XML characters.

Files Updated:

- Cobra.Process.dll

Reports

Defect 1730117

Description: Creating BCR snapshots took longer than expected if the project was inserting many activities.

Customers Impacted: This defect affects customers who use the BCR Analysis report feature.

Workaround Before Fix: None.

Files Updated:

- Cobra.WebService.dll
- Cobra.WebService.Host.exe
- Cobra.Model.dll
- Cobra.Model.LoginManager.dll

Database Changes

There are no database changes in this release.

Data Changes

There are no data changes in this release.

Documentation Changes

This section includes details of section changes in the printed documentation that are in addition to any enhancements.

Document	Details
Deltek Cobra 8.4 Help System	<ul style="list-style-type: none"> ▪ Generated the portable document format of the Cobra 8.4 Help System, which you can access through the Cobra 8.4 Help System main page ▪ Updated the Integration Wizard Preferences help topic to explain how the options in the dialog box affect new and existing configurations

Cobra 8.4 Cumulative Update 15

Released: July 29, 2022

Enhancements

This section includes enhancements in this release.

[Support for Microsoft Office 365 and Citrix Virtual Apps and Desktops 7.x \(Windows Server 2022\)](#)

Cobra now supports the following deployment technologies:

- Microsoft Office 365
- Citrix Virtual Apps and Desktops 7.x (Windows Server 2022)

Software Issues Resolved

This section includes software issues resolved in this release.

[File » Integration Wizard-Project Data](#)

Defect 1612015

Description: When you ran the Integration Wizard to load an existing configuration file and selected **Control Account and Work Package** in the **Project Data** field on the Action Selection page, Cobra encountered an "Unhandled Exception" error as you tried to complete the pages of the Wizard.

Customers Impacted: This defect affects customers who use the Integration Wizard.

Workaround Before Fix: None.

Files Updated:

- Cobra.WinUI.exe
- Cobra.WinUI.*.dll
- Cobra.Model.dll

[File » Restore](#)

Defect 1716188

Description: When you deleted a control account, work package, or resource assignment where an audit log adjustment was required, and another user or process held a lock on any of the control accounts in the project, Cobra did not adjust the audit log to account for the deleted work package. This defect occurred only when the project contained an internal DIR_UID with a length of 22 characters.

Customers Impacted: This defect affects all customers.

Workaround Before Fix: None.

Additional Notes:

- If the delete action is performed in the Project view, a background process to adjust the audit log will execute and will continue to wait for the other lock(s) to be released until the retry count is reached before failing. There will not be any indication displayed in the Cobra user interface but there will be a Project Audit process entry in the Process Log viewer that shows the failed lock attempts.
- If the delete action is performed through the DeleteWorkPackage Web Service, Cobra will wait for the other lock(s) to be released until the retry count is reached before failing and returning an error response to the caller. There will be a Project Audit process entry in the Process Log viewer that shows the failed lock attempts.

Files Updated:

- Cobra.WinUI.*.dll
- Cobra.WinUI.exe
- Cobra.Model.dll
- Cobra.Model.LoginManager.dll
- Cobra.Process.dll

Projects » Project View

Defect 1419576

Description: When you deleted a control account or work package in the Project view, Cobra incremented the project's batch number.

Customers Impacted: This defect affects all customers.

Workaround Before Fix: None.

Files Updated:

- Cobra.WinUI.*.dll
- Cobra.WinUI.exe
- Cobra.Model.dll
- Cobra.Model.LoginManager.dll
- Cobra.Process.dll

Project Processes » Calculate Forecast

Defect 1694153

Description: When you ran the Calculate Forecast Wizard against a forecast class that used the Coded Ranges forecast method, the values before the status date were not correctly processed if at least one of the Coded Ranges was not set to Manual Forecast (Retain EAC).

Customers Impacted: This defect affects customers who use the Manual Forecast (Retain EAC) with Coded Ranges method.

Workaround Before Fix: Calculate forecast by using the Manual Forecast Retain ETC method instead of Coded Ranges and then Manual Forecast Retain ETC).

Files Updated:

- Cobra.Process.dll

Defect 1708618

Description: When you ran the Calculate Forecast Wizard, the calculated forecast value was zero if:

- The forecast method used was Manual Forecast (Retain EAC).
- The resource assignment had only one period on or before the status date.
- The work package was planned.
- The **Spread ETC according to** field on the Options page was set to **Existing ETC Spread**.

Customers Impacted: This defect affects customers who use the Calculate Forecast Wizard.

Workaround Before Fix: None.

Files Updated:

- Cobra.WinUI.*.dll
- Cobra.WinUI.exe
- Cobra.Process.dll

Defect 1714732

Description: When you ran the Calculate Forecast Wizard, Cobra skipped the forecast calculation and encountered the "All the forecast spread periods for <CA/WP/Code/Class> are before the status date. Skipping the forecast calculation" error if:

- The forecast method used was Manual Forecast (Retain EAC).
- The resource assignment had only one period on or before the status date.
- The work package was in-progress.

Customers Impacted: This defect affects customers who use the Calculate Forecast Wizard.

Workaround Before Fix: None.

Files Updated:

- Cobra.WinUI.*.dll
- Cobra.WinUI.exe
- Cobra.Process.dll

Database Changes

There are no database changes in this release.

Data Changes

There are no data changes in this release.

Documentation Changes

This section includes details of section changes in the printed documentation that are in addition to any enhancements.

Document	Details
<i>Deltek Cobra 8.4 Installation Guide</i>	<ul style="list-style-type: none"> ▪ Added the following technologies to the System Requirements section: <ul style="list-style-type: none"> ▪ Citrix Virtual Apps and Desktops 7.x (Windows Server 2022) ▪ Microsoft Office 365
<i>Deltek Cobra 8.4 Technical Overview and System Requirements Guide</i>	<ul style="list-style-type: none"> ▪ Added the following technologies to the System Requirements section: <ul style="list-style-type: none"> ▪ Citrix Virtual Apps and Desktops 7.x (Windows Server 2022) ▪ Microsoft Office 365

Cobra 8.4 Cumulative Update 14

Released: July 1, 2022

Enhancements

This section includes enhancements in this release.

[Support for Windows 11 and Windows Server 2022](#)

Cobra now supports Microsoft Windows 11 and Microsoft Windows Server ® 2022.

Software Issues Resolved

This section includes software issues resolved in this release.

[File » Integration Cost Data Export](#)

Defect 1323258

Description: When you ran the Cost Data Wizard to load an existing IPMDAR file, the **Direct values** and **Indirect values** options on the Data Options page were no longer selected.

Customers Impacted: This defect affects customers who use the Cost Data Wizard.

Workaround Before Fix: None.

Files Updated:

- Cobra.WinUI.*.dll
- Cobra.WinUI.exe

[File » Integration Wizard-Project Data](#)

Defect 1477239

Description: When you ran the Integration Wizard to load project data and the class being loaded (for example, "Forecast") had a name similar with another class (for example, "Forecast 2022") that used a different rate file without the rate set of the resource being loaded, Cobra encountered the "No rate found" warning message.

Customers Impacted: This defect affects customers who use the Integration Wizard to load project data.

Workaround Before Fix: None.

Additional Notes: When classes have similar names, Cobra takes the rate file of the first class it sees during a process. If the class happens to have a different rate file from the class being loaded, Cobra uses this rate file instead of the one associated to the class being loaded. Thus, warnings are encountered when the rate file Cobra selects has missing rate set of the resource.

Files Updated:

- Cobra.WinUI.*.dll
- Cobra.WinUI.exe

- Cobra.Process.dll

[Project Processes » Calculate Forecast](#)

Defect 1700670

Description: When you ran the Calculate Forecast Wizard, the time-phased spread of the Retain EAC forecast class would be spread incorrectly if the existing Retain EAC resource assignment contained zero time-phased periods stored in the database for some, but not all, of the zero time-phased periods.

Customers Impacted: This defect affects customers who use the Calculate Forecast Wizard.

Workaround Before Fix: None.

Files Updated:

- Cobra.Process.dll

[Project Processes » Calculate Progress](#)

Defect 1678508

Description: When you ran the Calculate Progress process, Cobra intermittently encountered the error: "Unable to cast object of type 'Cobra.Model.DatasourceKeyIdentity' to type 'Cobra.Model.CobraIdentity'."

Customers Impacted: This defect affects customers who run the Calculate Progress process on an n-tier deployment.

Workaround Before Fix: None.

Files Updated:

- Cobra.Model.dll
- Cobra.Model.LoginManager.dll
- Cobra.WinUI.*.dll
- Cobra.WinUI.exe

Database Changes

There are no database changes in this release.

Data Changes

There are no data changes in this release.

Documentation Changes

This section includes details of section changes in the printed documentation that are in addition to any enhancements.

Document	Details
<i>Deltek Cobra 8.4 Installation Guide</i>	<ul style="list-style-type: none"> Updated Step 4 of <i>Appendix H: Cobra Integration with Oracle PrimaveraP6 API</i> Updated Overview, Step 1, 2, and 3 of <i>Appendix K: Managing BCR Snapshot Database</i> Added Windows 11 and Windows Server 2022 to the Software Requirements section
<i>Deltek Cobra 8.4 Technical Overview and System Requirements Guide</i>	<ul style="list-style-type: none"> Added Windows 11 and Windows Server 2022 to the Software Requirements section
Deltek Cobra 8.4 Help System	<ul style="list-style-type: none"> Moved the Concurrency setup information to a single document – <i>Deltek PM Compass and Cobra Concurrency Solution Setup and Configuration Guide</i>

Cobra 8.4 Cumulative Update 13

Released: June 1, 2022

Enhancements

This section includes enhancements in this release.

Updates to the BCR Analysis Report Documentation and Scripts Location

In Cobra 8.4 Cumulative Update 12, the steps to set up the BCR Snapshot database were documented in the Cobra Help System (BCR Analysis Report), and the required scripts to configure the BCR Snapshot database were attached to *KBA # 105756-Managing BCR Snapshot Database to Support BCR Analysis Report for PM Compass* in the Knowledge Center of the Deltek Support Center.

Beginning with Cobra 8.4 Cumulative Update 13:

- The required scripts are placed in the **<Cobra installation directory>\Samples\Cobra84PMCompassBCRScripts** folder when you install Cobra. This folder contains the following sub-folders:
 - **Data Tool:** This folder contains the DataTool.sdf file.
 - **Oracle:** This folder contains the Create and Upgrade scripts for Oracle databases.
 - **Sample:** This folder contains the RecreateAsGlobalTempTables_Oracle.sql file.
 - **SQL:** This folder contains the Create and Upgrade scripts for MS SQL databases.
- The steps to set up the BCR Snapshot database are discussed in detail in “Appendix K: Managing BCR Snapshot Database” of the *Cobra 8.4 Installation Guide*.

Software Issues Resolved

This section includes software issues resolved in this release.

API » Web Services

Defect 1643426

Description: When the **Prevent editing Time Phased Grid** option was selected for a class, and a work package included that class, the Cobra Web Service did not allow the deletion of the work package.

Customers Impacted: This defect affects customers who integrate Cobra with PM Compass.

Workaround Before Fix: None.

Files Updated:

- Cobra.Model.dll
- Cobra.WinUI.*.dll
- Cobra.WinUI.exe
- Cobra.WebService.dll
- Cobra.WebService.Host.exe

File » Integration Wizard-Project Data

Defect 1675021

Description: When the **Project lock setting** field on the Data Access tab of the Application Preferences dialog box was set to **Control Account**, and you ran the Integration Wizard to load an empty activity file on the Project Selection page, and selected the **Delete Control Accounts and Work Packages no longer in the schedule** option on the Change Control page, Cobra displayed a "locked by another user" warning and did not delete the work packages.

Customers Impacted: This defect affects customers who use the Integration Wizard with **Project lock setting** set to **Control Account**.

Workaround Before Fix: None.

Files Updated:

- Cobra.WinUI.*.dll
- Cobra.WinUI.exe
- Cobra.Process.dll

Defect 1620122

Description: If the **Force existing Work Package dates to match the schedule for** option on the Integration Wizard-Preferences tab of the Project Properties dialog box was both **Selected** and **Secure**, the integration failed to complete, and the process log was blank.

Customers Impacted: This defect affects customers who use the Integration Wizard.

Workaround Before Fix: Clear the **Secure** checkbox for the **Force existing Work Package dates to match the schedule for** option.

Additional Notes: This was fixed as part of Defect 29519 in Cobra 8.4 Cumulative Update 12.

Files Updated:

- N/A

Project Processes » Calculate Forecast

Defect 1678969

Description: When you ran the Calculate Forecast Wizard to run concurrent forecast calculations, Cobra encountered the "ORA-00904: "CAWP"."CAWPID": invalid identifier" error.

Customers Impacted: This defect affects customers who use the concurrency feature.

Workaround Before: Clear the **Send to process server** check box on the Run page.

Additional Notes: The error does not occur when you run the Calculate Forecast process ((without the concurrency feature) or other processes with concurrency feature.

Files Updated:

- Cobra.Process.dll

Projects » Project View

Defect 1515072

Description: When you changed the progress technique of a work package to **Apportioned**, the progress technique returned to its previous value after you expanded the same control account to be apportioned in the Work Package Lookup dialog box.

Customers Impacted: This defect affects all customers.

Workaround Before Fix: Perform the following steps:

1. In the Spreadsheet pane of the Project, reselect the control account and then work package.
2. On the General tab (below), select **Apportioned** in the **Progress Technique** drop-down list.
3. Click the **Apportioned to** field and select the work package.
4. Click **Save** to reflect your changes.

Files Updated:

- Cobra.WinUI.*.dll
- Cobra.WinUI.exe
- Cobra.Model.dll
- Cobra.Model.LoginManager.dll

Database Changes

There are no database changes in this release.

Data Changes

There are no data changes in this release.

Documentation Changes

This section includes details of section changes in the printed documentation that are in addition to any enhancements.

Document	Details
Deltek Cobra 8.4 Help System	<ul style="list-style-type: none"> ▪ Updated the BCR Analysis Report help topic to reflect the change in the BCR script's location ▪ Moved the BCR Analysis report documentation to "Appendix K: Managing BCR Snapshot Database" of the <i>Cobra 8.4 Installation Guide</i>
<i>Deltek Cobra 8.4 Installation Guide</i>	<ul style="list-style-type: none"> ▪ Updated "Appendix K: Managing BCR Snapshot Database" to include all BCR Analysis report documentation, previously located in the Cobra Help System

Cobra 8.4 Cumulative Update 12

Released: April 29, 2022

Enhancements

This section includes enhancements in this release.

Support for BCR Analysis Report in PM Compass

The Budget Change Request (BCR) Analysis report, which is generated in PM Compass, provides a summary and detailed information about the changes processed in a particular period. The BCR Analysis report displays *before* and *after* data for change requests processed for a period and highlights any discrepancies; that is, data that was not processed as planned.

Note: The BCR Analysis report feature is available if you are using Cobra 8.4 Cumulative Update 12 and PM Compass 8.2 Cumulative Update 10, at the minimum.

In order to run the BCR Analysis report, you must first set up the BCR Snapshot database using the Cobra Data Tool. The BCR Snapshot database must have a schema that matches your production or source database.

Note: The scripts you need to set up the BCR Snapshot database are attached to *KB Article #105756 –Managing BCR Snapshot Database to Support BCR Analysis Report for PM Compass* in the Knowledge Center of the Deltek Support Center. Contact a Deltek Customer Success analyst should you need assistance in downloading the scripts.

- [BCRReportingFeatureScriptsandFiles.zip](#)

For detailed steps to set up the BCR Snapshot database using the Cobra Data Tool, see the following topics in the [BCR Analysis Report](#) node of the Cobra Help System:

- [BCR Analysis Report Requirements](#)
- [Implementation Summary](#)
- [Additional Topics](#)

Once the BCR Snapshot database is set up, open PM Compass, and access the BCR Analysis Report form, where you can filter the data that you want to in the report, and run the report itself.

Attention: Refer to the topics in the **Reports » BCR Analysis Report** node of the PM Compass Help System or the *Deltek PM Compass 8.2 Cumulative Update 10 Release Notes* for more information.

To support running the BCR Analysis report in Cobra, a new page labeled **Link to External Database** has been added to the Cobra Data Tool Wizard. By using the Link to External Database page, you can link the main database to the BCR Snapshot database. The BCR Snapshot database will hold the snapshots of your project throughout the Budget Change Request workflow completion. To ensure that the BCR Analysis Reporting feature works correctly, the main database and the BCR Snapshot database must have the same tables, configuration, and product version.

The Link to External Database page is placed after the Options page or the Define Results page, and before the Confirmation page of the Cobra Data Tool Wizard. This page displays if the main database

contains PM Compass 8.2 tables. You must configure this page with the connection details of the BCR Snapshot database. If not configured, you will not be able to utilize the BCR Analysis Reporting feature.

Link to External Database Page of the Data Tool Wizard

Note: The Link to External Database Page is documented in the Cobra Data Tool Help System.

To display the Cobra Data Tool Help, click the **Help** button on any of the Wizard pages, or navigate to the Help sub-folder of the Cobra installation directory, and double-click **DataTool.chm**.

Cobra Project Name Displayed in the DCDE Report

When you generate the Deltek Common Data Exchange (DCDE) report using the Cost Data Wizard, the Cobra project name specified in the **Name** field on the General tab of the Project Properties dialog box now displays in the generated report.

General Tab of the Project Properties Dialog Box

```
<Contract id="cc1">
  <ContrName>Project Demo Advanced</ContrName>
  <ContrNum>453-587B4</ContrNum>
  <ContrType>LRIP</ContrType>
  <ProgName>Air CPX Development</ProgName>
  <ProgNum>1</ProgNum>
  <ProgType>Development</ProgType>
  <CtrID ctr_id="ctrl" />
  <CustID ctr_id="ctrl" />
  <SecurityText>Unclassified</SecurityText>
  <RDQty>3</RDQty>
  <ReportType>0</ReportType>
  <NegCost>2290000</NegCost>
  <TgtPrice>2519000</TgtPrice>
  <TgtFeeDol>229000</TgtFeeDol>
  <ContrCeiling>484000</ContrCeiling>
  <ShareAbove>2</ShareAbove>
  <ShareBelow>3</ShareBelow>
  <ContrDefinit>20070530</ContrDefinit>
  <ContrStart>20070530</ContrStart>
  <WorkStart>20070530</WorkStart>
  <SysDateID cd_id="cd1" />
  <CalID cal_id="cal1" />
  <F3UnitID un_id="un1" />
  <F4UnitID un_id="un2" />
  <F4StruID st_id="st2" />
  <CprDid>2</CprDid>
  <RateFile rf_id="rf0" />
  <ResourceFile st_id="st0" />
  <OrigNegCost>2210000</OrigNegCost>
  <TaskOrEffortName>Space Shuttle</TaskOrEffortName>
  <Phase>Initial Development</Phase>
  <CostProjectName>DEMO_ADVANCED</CostProjectName>
</Contract>
```

Generated DCDE Report

Support for SQL Server-Windows Authentication in PM Compass Weblink

Cobra Web Service now supports SQL Server-Windows Authentication when the database connection is configured in PM Compass Weblink.

Software Issues Resolved

This section includes software issues resolved in this release.

API » Web Services

Defect 1635429

Description: When the **Prevent editing Time Phased Grid** option was selected, the Cobra Web Service did not delete the resource assignment.

Customers Impacted: This defect affects customers who integrate Cobra with PM Compass.

Workaround Before Fix: None.

Files Updated:

- Cobra.Model.dll
- Cobra.WebService.dll
- Cobra.WebService.Host.exe

File » Integration Wizard-Ancillary Data

Defect 229519

Description: When you ran the Integration Wizard to load code assignments, and the **Update Control Account dates to span Work Package dates exactly** option on the Integration Wizard-Preferences tab of the Project Properties dialog box was selected, the integration tried to force the control account dates to match the work package dates even if the dates were not being updated, causing Cobra to encounter an error.

Customers Impacted: This defect affects customers who use the Integration Wizard.

Workaround Before Fix: Ignore the error as the code assignments are imported correctly. Clear the **Update Control Account dates to span Work Package dates exactly** option on the Integration Wizard-Preferences tab of the Project Properties dialog box, and then run the Integration Wizard again.

Files Updated:

- Cobra.Process.dll

Projects » Project View

Defect 1585284

Description: When users were logged out of Cobra due to exceeding the value specified in the **Max Time of Inactivity** field in EPM Security Administrator (EPM SA), Cobra did not release the object lock.

Customers Impacted: This defect affects all customers.

Workaround Before Fix: None.

Files Updated:

- Cobra.WinUI.*.dll
- Cobra.WinUI.exe
- Cobra.Model.dll
- Cobra.Model.LoginManager.dll
- PPM.Engine.Security.dll

Project Processes » Recalc

Defect 1324487

Description: When you ran the Recalc Wizard, Cobra incorrectly recalculated the cost for a forecast class if:

- The forecast dates in the Spreadsheet pane of the Project view were different from the baseline dates.
- The calculated time-phased period fell in multiple periods of a rate set.
- The periods of the rate set to calculate cost changed when using forecast date set versus the baseline date set.

Customers Impacted: This defect affects customers who use the Recalc Wizard.

Workaround Before Fix: None.

Files Updated:

- Cobra.WinUI.*.dll
- Cobra.WinUI.exe
- Cobra.Process.dll

Reports » Reports

Defect 914680

Description: When you ran some reports, Cobra encountered the "Invalid date format" or "Unhandled Exception" error if you were using SQL Native Client 11 or Microsoft OLE DB Driver for SQL Server data provider.

Customers Impacted: This defect affects customers who use Cobra with SQL Native Client 11 or Microsoft OLE DB Driver for SQL Server data provider.

Workaround Before Fix: Use SQL Server .Net Framework data provider.

Files Updated:

- Cobra.WinUI.*.dll
- Cobra.WinUI.exe
- Cobra.Model.dll
- Cobra.Model.LoginManager.dll

Database Changes

There are no database changes in this release.

Data Changes

There are no data changes in this release.

Documentation Changes

This section includes details of section changes in the printed documentation that are in addition to any enhancements.

Document	Details
Deltek Cobra 8.4 Help System	<ul style="list-style-type: none"> ▪ Added BCR Analysis Report help topics for the Support for BCR Analysis Report in PM Compass enhancement
<i>Deltek Cobra 8.4 Installation Guide</i>	<ul style="list-style-type: none"> ▪ Added "Appendix K: Managing BCR Snapshot Database"
Deltek Cobra Data Tool Help System	<ul style="list-style-type: none"> ▪ Added the "Link to External Database" help topic

Cobra 8.4 Cumulative Update 11

Released: April 5, 2022

Enhancements

This section includes enhancements in this release.

Managing Instances and Gateway Endpoints using the Cobra Web Service Management Tool

Managing Cobra Web Service instances and gateway endpoints require you to perform several tasks and use different interfaces.

To install an instance, you need to modify the configuration files and run a command line. To reconfigure an instance, you need to stop the service, modify the configuration file, and start the service again. These methods are sometimes susceptible to errors that may break the instance or gateway endpoints.

The Cobra Web Service Management Tool is created to streamline and automate the methods by providing the following functions:

- Set up the Cobra Web Service instances and gateway endpoints through an intuitive user interface
- Install and delete instances and gateway endpoints without using the Windows command line
- Start, restart, and stop instances and gateway endpoints without accessing Windows Services Manager (Services MMC)

The Cobra Web Service Management Tool does not include managing SSL certificates needed to set up Cobra Web Service instances and gateway endpoint that use the HTTPS protocol. To support SSL in Cobra Web Service instances and gateway, you must bind the HTTPS ports to be used by these services to Windows Server Certificates.

Attention: See [“Configuring Cobra Web Service to Use Secure Socket Layers”](#) in the Cobra Help System for more information.

In addition, the Cobra Web Service Gateway Configuration Tool, previously a stand-alone tool, has been merged into the Cobra Web Service Management Tool.

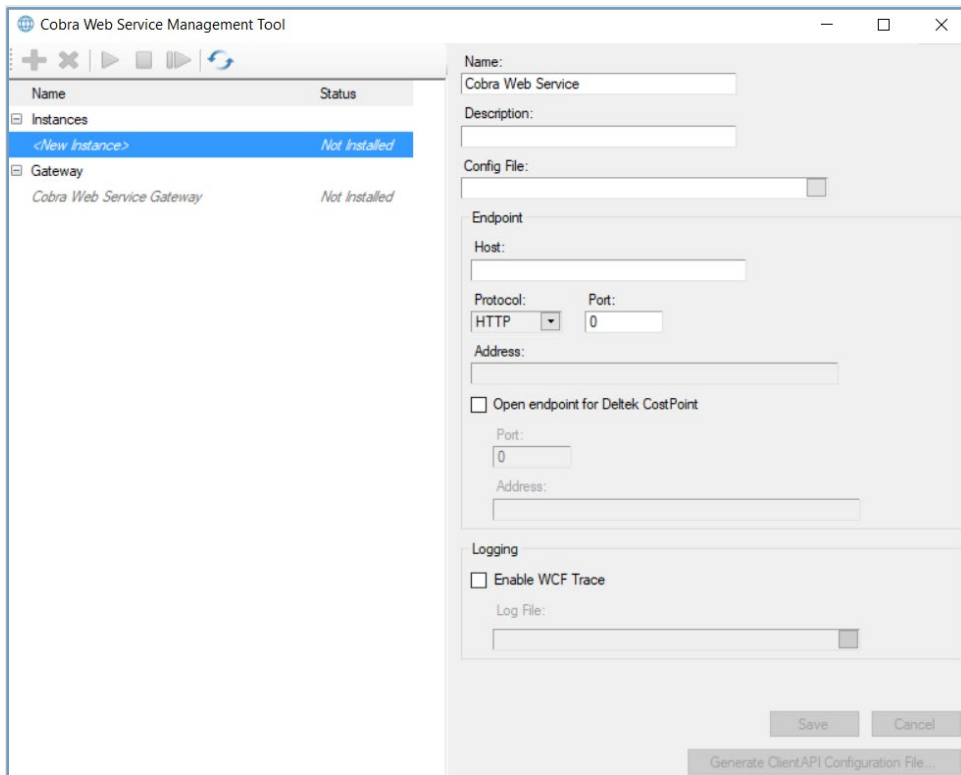
The Cobra Web Service Management Tool consists of two panes: the left pane and the right pane.

The left pane contains the following sections:

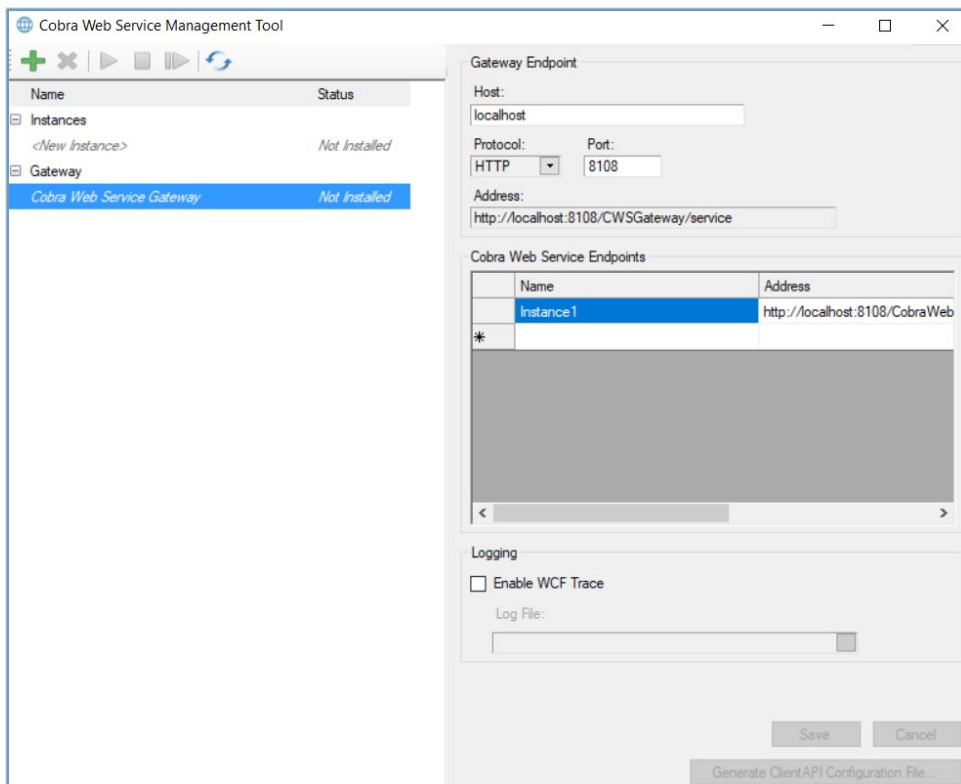
- Toolbar
- Instances Tree
- Gateway Tree

The section displayed in the right pane of the Cobra Web Service Management Tool depends on what is selected in the left pane.

- If an instance or **<New Instance>** is selected in the left pane of the tool, the Cobra Web Service Instance Settings displays in the right pane.



- If the gateway is selected in the left pane of the tool, the Cobra Web Service Gateway Settings displays in the right pane.



When you launch the Cobra Web Service Management Tool, it performs the following actions:

- Retrieves all services that execute the Cobra.WebService.Host.exe in Windows Services
- Reflects the status of each instance
- Locates the Cobra.WebService.Gateway.Host.exe in Windows Services
- Loads the Cobra.WebService.Gateway.Host.exe.config file into the Cobra Web Service Gateway Settings

Attention: See the topics in the [Cobra Web Service Management Tool](#) node of the Cobra Help System for more information about the panes and fields in the tool.

Software Issues Resolved

This section includes software issues resolved in this release.

API » PMC Web Services

Defect 1622956

Description: When you used multiple SQL Server database connections with the same instance and username to run workflows in PM Compass, the Cobra Web Service encountered errors.

Customers Impacted: This defect affects customers who run workflows in PM Compass using multiple SQL Server databases with the same instance and username.

Workaround Before Fix: None.

Files Updated:

- Cobra.WebService.dll
- Cobra.WebService.Host.exe

File » Integration Wizard-Project Data

Defect 1616207

Description: When you ran the Integration Wizard to load schedule code file from Open Plan, Cobra displayed that the integration had completed with errors, but the process log was empty, and the codes were not imported.

Customers Impacted: This defect affects customers who use the Open Plan–Integration Wizard.

Workaround Before Fix: None.

Files Updated:

- Cobra.WinUI.*.dll
- Cobra.WinUI.exe
- Cobra.Model.dll
- Cobra.Model.LoginManager.dll

Projects » Project View

Defect 1519965

Description: When you were in the Project view and you selected a different value in the **Result** drop-down list on the Edit tab, Cobra took a long time to load the values in the Time-phase pane.

Customers Impacted: This defect affects customers who use the Project view on a Microsoft SQL Server database.

Workaround Before Fix: None.

Files Updated:

- Cobra.Model.dll
- Cobra.Model.LoginManager.dll
- Cobra.WinUI.*.dll
- Cobra.WinUI.exe

Project Processes » Calculate Forecast

Defect 1461013

Description: When you ran the Calculate Forecast Wizard, Cobra changed the time-phase spread for forecast resource assignments that contained zero time-phased periods.

Customers Impacted: This defect affects customers who use the Calculate Forecast Wizard.

Workaround Before Fix: Run the Assignment Export/Import Wizard against the forecast resource assignments.

Files Updated:

- Cobra.Process.dll

Defect 1610376

Description: When you ran the Calculate Forecast Wizard against a class that used the Coded Ranges forecast method, with one of the ranges set to Manual Forecast (Retain EAC) method but without future forecasts, Cobra deleted the past forecasts without making the adjustments in the future and caused the EAC to be reduced.

Customers Impacted: This defect affects customers who use the Manual Forecast (Retain EAC) with Coded Ranges method.

Workaround Before Fix: None.

Files Updated:

- Cobra.WinUI.*.dll
- Cobra.WinUI.exe
- Cobra.Process.dll

Defect 1630956

Description: When you ran the Calculate Forecast Wizard and selected **Budget** in the **Spread ETC** according to drop-down list on the Options page, Cobra did not spread the forecast correctly using the Budget spread.

Customer Impacted: This defect affects customers who use the Calculate Forecast Wizard.

Workaround Before Fix: None.

Files Updated:

- Cobra.Process.dll

[Reports » Report View](#)

Defect 1610547

Description: When you ran the IPMR Format 1 or CPR Format 1 report, the Variance Adjustments Total field (block 9a) had a different format than the rest of the fields in the generated report.

Customers Impacted: This defect affects customers who run the IPMR Format 1 or CPR Format 1 report.

Workaround Before Fix: None.

Files Updated:

- cpr format 1.xlsx
- IPMR CPR Format 1.xlsx

[Security](#)

Defect 1616326

Description: Cobra was not installing the latest version of the MSCOMCTL.OCX file.

Customers Impacted: This defect affects all customers.

Workaround Before Fix: Download the latest version of the MSCOMCTL.OCX file from the Microsoft website and install it.

Additional Notes: When there is no Cobra Workstation Administration Tools feature installed, the MSCOMCTL.OCX file in the Workstation server is not automatically updated in C:\Windows\SysWOW64 during installation.

Files Updated:

- DeltekCobra84.exe

Database Changes

There are no database changes in this release.

Data Changes

There are no data changes in this release.

Documentation Changes

This section includes details of section changes in the printed documentation that are in addition to any enhancements.

Document	Details
Cobra 8.4 Online Help	<ul style="list-style-type: none">▪ Created the following topics for the "Managing Instances and Gateway Endpoints using the Cobra Web Service Management Tool" enhancement:<ul style="list-style-type: none">▪ Cobra Web Service Management Tool▪ Configuring Cobra Web Service to Use Secure Socket Layers▪ Added and/or updated references to the Cobra Web Service Management Tool in the following topics:<ul style="list-style-type: none">▪ Cobra Web Service Log▪ Create the Cobra Web Service Gateway▪ Create the Cobra Web Service Gateway▪ Deploy the Cobra Web Service Host▪ Deploy the Cobra Web Service ClientAPI▪ Deploying the Cobra Web Service▪ Host the Cobra Web Service Instances▪ Register the Gateway in Windows Services▪ Unregister the Gateway from Windows Services

Cobra 8.4 Cumulative Update 10

Released: March 4, 2022

Enhancements

This section includes enhancements in this release.

Support for Concurrent Forecast Calculations

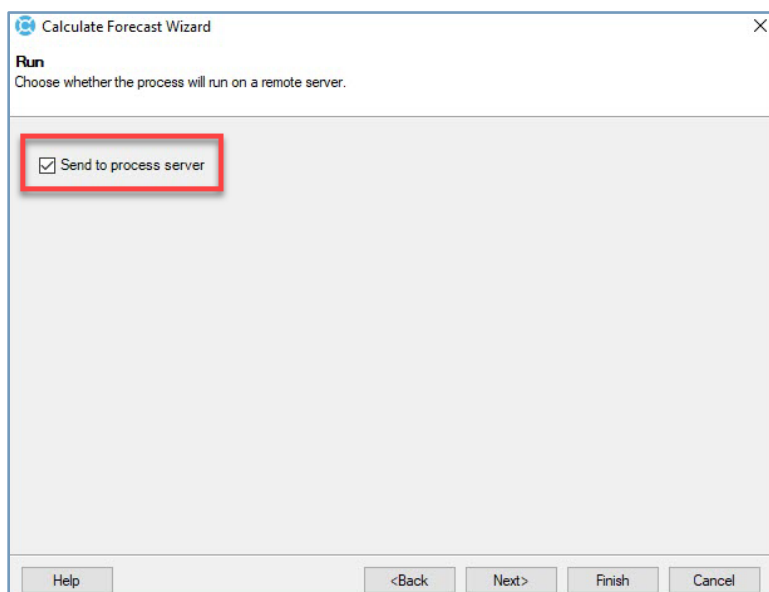
Cobra now supports concurrency in running forecast calculations on batches of control accounts. For example, a project can be split into multiple jobs, with each job processing a different batch of control accounts concurrently.

To use this feature, you must understand the following information and requirements:

- You must know the [requirements](#) and [steps](#) to set up your environment to run a concurrent process.
- You are running the concurrent forecast calculations against a single project.
- You are not running the concurrent forecast calculations against Frozen Forecast classes.
- The apportionment mapping target is set to **<Same as Source>** or **<Same as Source> \ WP** for all control accounts in the apportionment mapping definition.
- You have specified the number of control accounts to process per batch in the **Control Accounts per queue** field on the [Data Access tab of the Application Preferences dialog box](#).

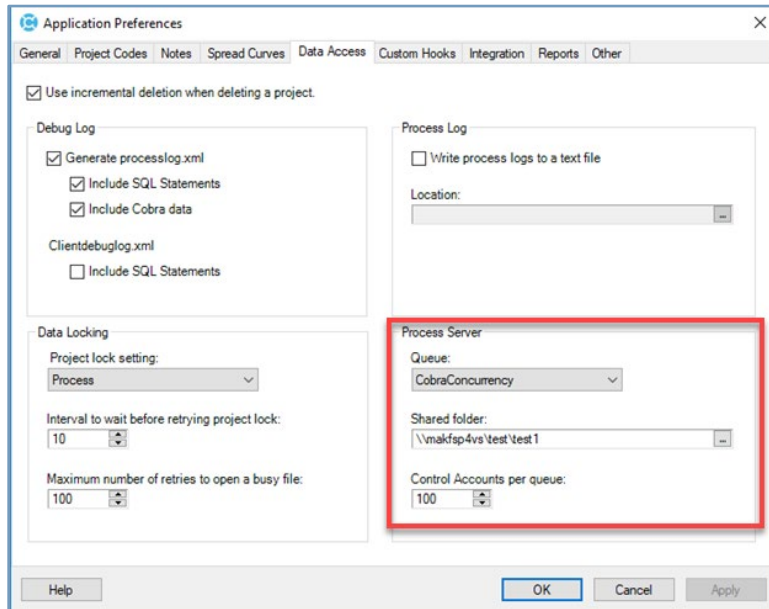
After you set up your environment for the concurrent forecast calculations and you run the [Calculate Forecast Wizard](#), the [Run page](#) displays after the Forecast Class Selection page.

Note: If you select a forecast class that uses the forecast method PF=Unit input on the Forecast Class Selection page, the Run page displays after the Manual Performance Factors page.



Run Page of the Calculate Forecast Wizard

If you select the **Send to process server** check box, Cobra groups the control accounts into multiple batches (according to the value specified in the **Control Accounts per queue** field on the Data Access tab of the Application dialog box), queues the forecast calculation job to the Process Server, and displays the Process Complete page immediately.



Data Access Tab of the Application Preferences Dialog Box

Attention: See the [“Concurrent Forecast Calculations”](#) and [“Concurrency in Cobra”](#) help topics in the Cobra Help System for more information.

Loading Budget Resources during Schedule Integration through the Cobra Web Services

When running the Schedule Integration through the Cobra Web Services, you can now define how budget resources are imported into the Cobra project from the scheduling tool.

The following new parameters are added:

- **LoadOptions:** This parameter determines how the budget class will be imported to the budget resource assignment data. This parameter can contain one of the following:
 - **LoadAllBudgetIntoDefaultClass:** This value informs Cobra to import all resource assignments into the same class.
 - **LoadBudgetClassFromField:** This value informs Cobra to use a schedule field that has the budget classes to import resource assignments.
- **LoadFromField:** This parameter determines the schedule field that has the budget class that will be imported to the budget resource assignment data.
- **LoadFilterClassList:** This parameter determines the list of classes that will only be included in importing budget resource assignment data.

Note: These parameters correspond to the fields in the **Budget** group box on the [Resource Assignments](#) page of the Integration Wizard.

The following [Web Service Client API Help](#) topics have been updated for this enhancement:

- [IntegrateProjectDataServiceArguments.BudgetCriteria Class](#): The new parameters are added to the BudgetCriteria class in this topic.
- [IntegrateProjectDataServiceArguments Class](#): The new parameters are referenced as the Budget property of IntegrateProjectDataServiceArguments class in this topic.

Software Issues Resolved

This section includes software issues resolved in this release.

File » Integration Cost Data Export

Defect 1485584

Description: When you ran the Cost Data Export process to export to a JSON file, the ReportingPeriodID value was missing if the total dollars of the combined actual classes totaled to zero while the hours on those same classes did not.

Customers Impacted: This defect affects customers who use the Cost Data Export process.

Workaround Before Fix: None.

Files Updated:

- PPM.CommonData.dll
- Cobra.WinUI.*.dll
- Cobra.WinUI.exe
- Cobra.Model.dll
- Cobra.Model.LoginManager.dll

File » Integration Wizard-Project Data

Defect 886533

Description: When you ran the Integration Wizard to load Microsoft Project data from an XML file, the Cobra time-phasing spread did not match the time-phasing of data in Microsoft Project.

Customers Impacted: This defect affects customers who load data from MS Project XML files using the MS Project Integration Wizard.

Workaround Before Fix: None.

Files Updated:

- Cobra.Process.dll

Defect 1601367

Description: When you ran the Integration Wizard, loaded an empty activity file on the Project Selection page, and selected the **Delete Control Accounts and Work Packages no longer in the schedule** option on the Change Control page, Cobra did not delete the work packages.

Customers Impacted: This defect affects customers who use the Transaction–File Integration Wizard.

Workaround Before Fix: You can load a transaction file with a single record that creates dummy work packages. When the process is completed, the filtered work packages will be deleted. You can then delete the dummy work packages.

Files Updated:

- Cobra.WinUI.*.dll
- Cobra.WinUI.exe
- Cobra.Process.dll

Defect 1603521

Description: When you ran the Integration Wizard to load schedule from Open Plan, Cobra changed the work package Baseline Start date to Open Plan's Schedule Start date of the baseline activity even if the **Prevent editing of historical time phased values** option on Project-Preferences tab of the Project Properties dialog box was selected, and the baseline start date was set prior to the status date.

Customers Impacted: This defect affects customers who use the Open Plan-Integration Wizard.

Workaround Before Fix: None.

Files Updated:

- Cobra.Process.dll

Defect 1590968

Description: When you ran the Integration Wizard to load an existing configuration and then updated the selection in the **Force existing Work Package dates to match the schedule for** field on the Change Control page, Cobra did not save your changes.

Customers Impacted: This defect affects customers who use the Transaction-File Integration Wizard.

Workaround Before Fix: Create a new configuration instead of loading an existing one.

Files Updated:

- Cobra.WinUI.exe
- Cobra.WinUI.*.dll

Installation

Defect 1599389

Description: Cobra was installing the old version of the MSCOMCTL.OCX file used by the EPM Security Administrator tool.

Customers Impacted: This defect affects all customers.

Workaround Before Fix: Download the latest version of the MSCOMCTL.OCX file from the Microsoft website and install it.

Files Updated:

- DeltekCobra84.exe

Project Processes » Freeze Forecast

Defect 169968

Description: When you ran the Freeze Forecast Wizard, Cobra encountered the "Forecast class XXX are not at the same level as Cost Set XXX" error if the included forecast classes in the Forecast Cost Set pane were set to both control account and work package levels, and a frozen forecast class set at the control account level was selected in the **Copy To class** field in the Frozen Forecast Class pane.

Customers Impacted: This defect affects customers who use the Freeze Forecast Wizard.

Workaround Before Fix: Run the Reclass Wizard to copy the forecast class at the work package level to a forecast class at the control account level, and then run the Freeze Forecast Wizard.

Files Updated:

- Cobra.WinUI.exe
- Cobra.WinUI.*.dll

Project Processes » Reclass

Defect 1605257

Description: When you ran the Reclass Wizard and the target class type was Actual or Progress, Cobra encountered the "LCCALENDAR' is not found" error if one of these scenarios applied:

- The **Copy resource assignment codes from** option on the Options page was set to **Target**.
- The target class and the source class were at different levels.

Customers Impacted: This defect affects customers who use the Reclass Wizard.

Workaround Before Fix: None.

Files Updated:

- Cobra.WinUI.*.dll
- Cobra.WinUI.exe
- Cobra.Process.dll

Defect 1609692

Description: When you ran the Reclass Wizard, the reclass values were incorrect if:

- The Source Class page was set to **Copy**, the Target Class page was set to **Replace existing**, and the target class and the source class were at different levels.
- The project contained records with code that was a subset of another code (for example, ASTRO and ASTRO1).
- The target class was a budget or forecast class, and the calendar dates were different from the source class calendar.

Customer Impacted: This defect affects customers who use the Reclass Wizard.

Workaround Before Fix: None.

Files Updated:

- Cobra.WinUI.*.dll
- Cobra.WinUI.exe
- Cobra.Process.dll

Defect 1597539

Description: When you ran the Reclass Wizard, Cobra did not create the target resource if:

- The Source Class page was set to **Copy**.
- The Target Class page was set to **Replace existing**.
- The Date Range page was not set to **Reclass all periods in your project**.

Customers Impacted: This defect affects customers who use the Reclass Wizard.

Workaround Before Fix: None.

Files Updated:

- Cobra.WinUI.*.dll
- Cobra.WinUI.exe
- Cobra.Process.dll

[Reports » Reports](#)

Defect 621652

Description: When you ran the IPMR CPR Format 1 or CPR Format 1 report using a master project, the Target Profit or box5d amount in the generated report was incorrect.

Customers Impacted: This defect affects customers who run the IPMR CPR Format 1 or CPR Format 1 report.

Workaround Before Fix: None.

Files Updated:

- cpr format 1.xlsx
- IPMR CPR Format 1.xlsx

Database Changes

There are no database changes in this release.

Data Changes

There are no data changes in this release.

Documentation Changes

This section includes details of section changes in the printed documentation that are in addition to any enhancements.

Document	Details
Deltek Cobra 8.4 Help System	<p>Created the following help topics for the Concurrent Forecast Calculations feature:</p> <ul style="list-style-type: none"> ▪ Concurrent Forecast Calculations ▪ Run Concurrent Forecast Calculations ▪ Run Page of the Calculate Forecast Wizard
<i>Deltek Cobra 8.4 Installation Guide</i>	Updated Step 4 of the “Add a New Data Source” section with instructions applicable to every database server type

Cobra 8.4 Cumulative Update 09

Released: February 4, 2022

Enhancements

There are no enhancements in this release.

Software Issues Resolved

This section includes software issues resolved in this release.

Documentation

Defect 1589598

Description: The Cobra Help did not contain sufficient information about loading actual cost records from a SQL Server database table during integration.

Customers Impacted: This defect affects all customers.

Workaround Before Fix: None.

Additional Notes: The steps to load actual costs from a SQL Server database table is now documented in the "[Create an MS SQL Database Connection to Load Actual Costs](#)" help topic.

Files Updated:

- Create a MS SQL Database Connection to Load Actual Costs.html
- Database Table Selection Page of the Integration Wizard Actuals.html
- File Selection Page of the Integration Wizard Actuals.html
- Loading Actual Cost Records from a Database Table.html

File » Integration Cost Data Export

Defect 1510620

Description: When you ran the Cost Data Export process to export to a JSON or DCDE file, the earned values for the Management Reserve (MR) and Undistributed Budget (UB) included zero values for the fields that were not applicable.

Customers Impacted: This defect affects customers who use the Cost Data Export process.

Workaround Before Fix: None.

Files Updated:

- Cobra.WinUI.*.dll
- Cobra.WinUI.exe
- Cobra.Model.dll
- Cobra.Model.LoginManager.dll

File » Integration wInsight

Defect 1592177

Description: When you ran the wInsight Export process, the UNCEFACT was not generated if the narrative text contained non-breaking spaces.

Customers Impacted: This defect affects customers who use the wInsight Export process.

Workaround Before Fix: Edit the narrative text by removing the non-breaking spaces and replacing them with spaces.

Files Updated:

- Cobra.WinUI.*.dll
- Cobra.WinUI.exe
- Cobra.Process.dll

Defect 562503

Description: When you ran the wInsight Export process, the UNCEFACT was not generated if the control account code in the Spreadsheet pane of the Project view contained special characters (&, >, <, ", ', |).

Customers Impacted: This defect affects customers who use the wInsight Export process.

Workaround Before Fix: Edit the control account code by removing the special characters.

Files Updated:

- Cobra.WinUI.*.dll
- Cobra.WinUI.exe
- Cobra.Process.dll

Defect 1321280

Description: When you ran the wInsight Export process to add dummy work packages for actuals and the **Level at which to capture actual costs** field on Files tab of the Project Properties dialog box was set to **Both Control Account & Work Package**, the generated XML file did not contain burden values for budget and progress.

Customers Impacted: This defect affects customers who use the wInsight Wizard.

Workaround Before Fix: None.

Files Updated:

- Cobra.WinUI.*.dll
- Cobra.WinUI.exe
- Cobra.Process.dll

File » Integration Wizard-Project Data

Defect 1568599

Description: When you ran the Integration Wizard and the **Prevent editing of historical time phased values** option on the Project-Preferences tab of the Project Properties dialog box was selected, Cobra updated the baseline dates before the status date.

Customers Impacted: This defect affects customers who use the Integration Wizard.

Workaround Before Fix: None.

Files Updated:

- Cobra.Process.dll

Reports » Report Wizard

Defect 460631

Description: When you opened the Manage Filters dialog box, report filters to which you did not have access were displayed.

Customers Impacted: This defect affects all non-Cobra administrators using the Manage Filters dialog box.

Workaround Before Fix: None.

Files Updated:

- Cobra.Model.dll
- Cobra.Model.LoginManager.dll
- Cobra.WinUI.*.dll
- Cobra.WinUI.exe

Reports » Reports

Defect 401984

Description: The Description column header for Export Rates report was incorrect.

Customers Impacted: This defect affects customers who generate Export Rates report.

Workaround Before Fix: Correct the column heading in the generated report.

Files Updated:

- export rates.xlsx

Database Changes

There are no database changes in this release.

Data Changes

There are no data changes in this release.

Documentation Changes

This section includes details of section changes in the printed documentation that are in addition to any enhancements.

Document	Details
Deltek Cobra 8.4 Help System	<ul style="list-style-type: none">▪ Made the following updates to the Cobra Online Help for Defect 158959:<ul style="list-style-type: none">▪ Documented steps to load actual costs from a SQL Server database table in the "Create an MS SQL Database Connection to Load Actual Costs" help topic▪ Added a note about creating an MS SQL database connection to load actuals costs to the following help topic:<ul style="list-style-type: none">▪ "Database Table Selection Page of the Integration Wizard Actuals"▪ "File Selection Page of the Integration Wizard Actuals"▪ "Loading Actual Cost Records from a Database Table"

Cobra 8.4 Cumulative Update 08

Released: December 20, 2021

Enhancements

This section includes enhancements in this release.

Allow Freezing of Multiple Columns and Rows in a Report Template File

You can now freeze multiple rows and columns in a report template file. When you run the Report Wizard, the changes you made to the report template file are applied to the generated report.

Support for Primavera P6 20.12

Cobra now supports Primavera® P6 20.12 beginning with version 8.4 Cumulative 08 onwards.

Match Work Package Forecast Dates with Dates Loaded from a Schedule during Integration

Cobra now allows you to match work package forecast start and finish dates with dates loaded from a schedule during integration. In order to support this feature, the **Force existing Work Package baseline dates to match the schedule** option on the Change Control page of the Integration Wizard has been changed to **Force existing Work Package dates to match the schedule for**, with a list of dates displayed depending on the dates being loaded from a schedule.

Change Control Page of the Integration Wizard

Note: See the [“Change Control Page of the Integration Wizard”](#) help topic for more information.

Software Issues Resolved

This section includes software issues resolved in this release.

[API » Web Services](#)

Defect 1544675

Description: When using Costpoint version 8.1 or earlier, the Integration-Actual Costs process with control account code assignments did not work.

Customers Impacted: This defect affects customers integrating with Costpoint.

Workaround Before Fix: None.

Files Updated:

- Cobra.WebService.Host.exe
- Cobra.WebService.dll

[File » Integration Cost Data Export](#)

Defect 1409679

Description: When you ran the Cost Data Wizard on a master project while in the Master Projects view, Cobra encountered an application error.

Customers Impacted: This defect affects customers who use the Cost Data Wizard.

Workaround Before Fix: Run the Cost Data Wizard while in the Projects view instead of the Master Projects view.

Files Updated:

- Cobra.Model.dll
- Cobra.Model.LoginManager.dll
- Cobra.WinUI.*.dll
- Cobra.WinUI.exe

[File » Integration Wizard-Project Data](#)

Defect 1431445

Description: When you performed multi-project concurrent integration using the Integration Wizard to load status data and selected the **Send to process server** option on the Save and Load page, Cobra encountered errors.

Customers Impacted: This defect affects customers who run concurrent Cobra processes.

Workaround Before Fix: None.

Files Updated:

- Cobra.WinUI.*.dll
- Cobra.WinUI.exe
- Cobra.Model.dll
- Cobra.Model.LoginManager.dll

Defect 1531564

Description: When you ran the Integration Wizard to load resource assignments, selected the **Delete items from Cobra that are no longer in the schedule** option on the Change Control page, and filtered by **Control Account** on the Filter page, the integration failed with the "TASCHEDULECLASSES is not an array" error.

Customers Impacted: This defect affects customers who use the Integration Wizard.

Workaround Before Fix: None.

Additional Notes:

- The integration completes if the **Delete items from Cobra that are no longer in the schedule** option on the Change Control page is cleared.
- The integration also fails if you filter by **Total Project** on the Filter page and select the **Delete items from Cobra that are no longer in the schedule** option on the Change Control page.

Files Updated:

- Cobra.Process.dll
- Cobra.WinUI.exe
- Cobra.WinUI.*.dll

Defect 1550439

Description: When you ran the Integration Wizard to import one file with activity and resource assignment data, and a result field on the Import File Field Mapper page contained "BE" within the result name, the integration failed with the following error: "SQL: Column '<resultname>' is not found."

Customers Impacted: This defect affects customers who use the Integration Wizard.

Workaround Before Fix: Use two separate files during import (one activity file and one resource assignment file).

Files Updated:

- Cobra.WinUI.*.dll
- Cobra.WinUI.exe
- Cobra.Process.dll

Project Processes » Assignment Export or Import

Defect 186735

Description: When you ran the Assignment Export Wizard and the resource exported contained special characters (&, <,>, ', ", ..., '), Cobra displayed an unexpected token error message.

Customers Impacted: This defect affects customers who use the Assignment Export Wizard.

Workaround Before Fix: Remove the special character in the resource name.

Files Updated:

- Cobra.WinUI.*.dll
- Cobra.WinUI.exe
- Cobra.Process.dll

Security

Defect 1538091

Description: When PM Compass called the Cobra API, Cobra did not authenticate the PM Compass users not listed as Cobra users in the EPM Security Administrator (EPM SA) tool.

Customers Impacted: This defect affects customers who use Cobra with PM Compass.

Workaround Before Fix: Add the PM Compass users as Cobra users to the EPM SA tool.

Files Updated:

- Cobra.WinUI.*.dll
- Cobra.WinUI.exe
- Cobra.WebService.dll
- Cobra.WebService.Host.exe
- ConfigManager.dll
- Cobra.Model.dll
- Cobra.Model.LoginManager.dll
- DataTool.exe
- DataTool.UI.Base.dll
- DataSourceMigration.exe
- DataSourceMigration.UI.Base.dll

Database Changes

There are no database changes in this release.

Data Changes

There are no data changes in this release.

Documentation Changes

This section includes details of section changes in the printed documentation that are in addition to any enhancements.

Document	Details
<i>Deltek Cobra 8.4 Installation Guide</i>	<ul style="list-style-type: none"> Added Primavera P6 20.12 to the Supported Deployment Technology table
<i>Deltek Cobra 8.4 Technical Overview and System Requirements Guide</i>	<ul style="list-style-type: none"> Added Primavera P6 20.12 to the Supported Deployment Technology table
Deltek Cobra 8.4 Help System	<ul style="list-style-type: none"> Updated the Cobra Web Service help topics Added “The encryption type requested is not supported by the KDC” help topic to the Troubleshooting section of the Cobra Web Service and Concurrency in Cobra nodes Added a note about the freezing multiple rows and columns in a report template file to the “Report Templates” help topic Added a note about specifying the data source in ServiceIdentityData.DataSourceKey property if Cobra is configured under Standalone or Server Deployment environment and that it has multiple data sources to the following help topics: <ul style="list-style-type: none"> Connecting to the Cobra Web Service Host Explaining the SampleClientAPI Code

Cobra 8.4 Cumulative Update 07

Released: November 5, 2021

Enhancements

There are no enhancements in this release.

Software Issues Resolved

This section includes software issues resolved in this release.

[API » Web Services](#)

Defect 1535010

Description: The Cobra Web Service Gateway did not properly manage the connection channels to the Cobra Web Service instances.

- The Gateway did not dispose the connection channel when it encountered a fault.
- The Gateway created only two concurrent connections to a remote Cobra Web Service instance.

Customers Impacted: This defect affects customers who run concurrent Cobra processes.

Workaround Before Fix: None.

Files Updated:

- Cobra.WebService.Gateway.Host.exe
- Cobra.WebService.Gateway.dll
- Cobra.WebService.Gateway.Host.exe.config

[File » Change Password](#)

Defect 1519243

Description: The EPM Security Administrator (EPM SA) rule for the minimum password length was ignored when changing your password through the Change Password dialog box in the Cobra application.

Customers Impacted: This defect affects customers who set a minimum length for a new login password in the EPM SA tool and change it through the Cobra application.

Workaround Before Fix: None.

Files Updated:

- Cobra.WinUI.*.dll
- Cobra.WinUI.exe
- Cobra.Model.dll
- Cobra.Model.LoginManager.dll

Projects » Project View

Defect 1507512

Description: Cobra did not allow you to add more than three digits to the integer part of a milestone weight on the Milestones/Steps tab of the Project view.

Customers Impacted: This defect affects all customers.

Workaround Before Fix: None.

Additional Notes: Cobra allows a nine-digit integer part for a milestone weight in version 8.3.

Files Updated:

- Cobra.WinUI.*.dll
- Cobra.WinUI.exe

Project Processes » Calculate Progress

Defect 1527599

Description: When you ran the concurrent progress calculations and the apportionment mapping was set to a specific work package target, Cobra did not display warnings about the specific work package target being invalid in the log.

Customers Impacted: This defect affects customers who use the Calculate Progress Wizard to run concurrent progress calculations.

Workaround Before Fix: None.

Files Updated:

- Cobra.Process.dll
- Cobra.WinUI.exe
- Cobra.WinUI.*.dll

Project Processes » Reclass

Defect 1324048

Description: When you ran the Reclass Wizard, Cobra encountered performance issues (for example, the Reclass process did not finish) if:

- The **Criteria** field on the Criteria page was set to value other than **Total Project**.
- The Source Class page was set to **Copy**.
- The Target Class page was set to **Replace Existing**.

Customers Impacted: This defect affects customers who use the Reclass Wizard.

Workaround Before Fix: Set the **Criteria** field to **Total Project**.

Files Updated:

- Cobra.WinUI.*.dll
- Cobra.WinUI.exe

- Cobra.Process.dll

[Project Processes » Slip](#)

Defect 1495826

Description: When you ran the Slip process, Cobra encountered the "Unknown member OSPREAD" error while calculating the forecast values.

Customers Impacted: This defect affects customers who use the Slip Wizard.

Workaround Before Fix: None.

Files Updated:

- Cobra.Process.dll
- Cobra.WinUI.exe
- Cobra.WinUI.*.dll

Database Changes

There are no database changes in this release.

Data Changes

There are no data changes in this release.

Documentation Changes

There are no documentation changes in this release.

Cobra 8.4 Cumulative Update 06

Released: September 30, 2021

Enhancements

There are no enhancements in this release.

Software Issues Resolved

This section includes software issues resolved in this release.

[API » Web Services](#)

Defect 1420550

Description: When you deleted resource assignments using the Cobra Web Service, the logs were generated and listed under the Assignment Import/Export process on the Process Logs dialog box.

Customers Impacted: This defect affects customers who use the Cobra Web Service to delete resource assignments.

Workaround Before Fix: None.

Additional Notes: Process logs for newly deleted resource assignments using the Cobra Web Service will be listed under the Resource Assignment Operations process on the Process Logs dialog box. Process logs for previously deleted resource assignments using the Cobra Web Service will still be listed under the Assignment Import/Export process.

Files Updated:

- Cobra.WinUI.*.dll
- Cobra.WinUI.exe
- Cobra.WebService.dll
- Cobra.WebService.Host.exe
- Cobra.Model.dll
- Cobra.Model.LoginManager.dll
- Cobra.Model.WebService.dll

[File » Integration Wizard-Project Data](#)

Defect 1455829

Description: When the firewall was set to block port 1433 between the Cobra application and the Workstation server on an n-tier deployment and you ran the Integration-MS Project Wizard, the status integration of an MS XML file failed.

Customers Impacted: This defect affects customers who run Cobra on an n-tier deployment.

Workaround Before Fix: None.

Files Updated:

- Cobra.WinUI.*.dll
- Cobra.WinUI.exe
- Cobra.Model.dll
- Cobra.Model.LoginManager.dll

Defect 466863

Description: When you ran the Integration-MS Project Wizard and selected the **Time-phased data is expanded in the Microsoft Project database** option on the Resource Assignments page, Cobra encountered warnings informing you that the start date was later than finish date and no records were updated.

Customers Impacted: This defect affects customers who use the Integration-MS Project Wizard.

Workaround Before Fix: None.

Files Updated:

- Cobra.Process.dll
- Cobra.WinUI.exe
- Cobra.WinUI.*.dll

Defect 1515715

Description: When you ran the Integration Wizard to load status against a project with the **Allow percent complete on milestones/steps** option on the Project-Preferences tab of the Project Properties dialog box cleared, Cobra updated the percent complete values on a milestone.

Customers Impacted: This defect affects customers who use the Integration Wizard to load status against a project with the **Allow percent complete on milestones/steps** option on the Project-Preferences tab of the Project Properties dialog box cleared.

Workaround Before Fix: None.

Additional Notes: The milestone percent complete values are not displayed in the Cobra UI but included in progress calculations.

Files Updated:

- Cobra.WinUI.*.dll
- Cobra.WinUI.exe
- Cobra.Process.dll

Project Processes » Assignment Export or Import

Defect 1160660

Description: When you ran the Assignment Import Wizard against a resource whose work package start and/or finish dates were outside the control account dates, Cobra did not update the control account dates to span the new work package dates.

Customers Impacted: This defect affects customers who use the Assignment Import Wizard.

Workaround Before Fix: None.

Files Updated:

- Cobra.Process.dll
- Cobra.WinUI.exe
- Cobra.WinUI.*.dll

Project Processes » Calculate Forecast

Defect 1506277

Description: When you ran the Calculate Forecast Wizard with a forecast class that used the Coded Ranges forecast method, and one of the Coded Ranges was mapped to a Retain EAC forecast method, the EAC was not retained correctly during forecast calculation.

Customers Impacted: This defect affects customers who use the Calculate Forecast Wizard against a forecast class that uses the Coded Ranges forecast method.

Workaround Before Fix: None.

Files Updated:

- Cobra.Process.dll
- Cobra.WinUI.exe
- Cobra.WinUI.*.dll

Project Processes » Replan

Defect 1506983

Description: When you ran the Replan Wizard, Cobra created a duplicate of the control account and work package entries if:

- The actual costs set to be captured at the control account level or both control and work package level.
- The **Create a new Work Package for the replanned Budget/Earned/Actuals** option on the Options page was selected.
- The **Budget = Earned = Actuals** option on the Method page was selected.

Customers Impacted: This defect affects customers who use the Replan Wizard.

Workaround Before Fix: None.

Files Updated:

- Cobra.WinUI.*.dll
- Cobra.WinUI.exe
- Cobra.Process.dll

Projects » Project View

Defect 1160697

Description: When expanding work package-level start or finish dates (Forecast, Early, or Late) beyond the account-level start or finish dates (Forecast, Early, or Late), Cobra did not prompt you to extend the control account-level dates to span the updated work package-level dates.

Customers Impacted: This defect affects all customers.

Workaround Before Fix: None.

Files Updated:

- Cobra.WinUI.exe
- Cobra.WinUI.*.dll

[Reports » Reports](#)

Defect 1516829

Description: When you ran multiple reports or Cost Data Export processes concurrently on an n-tier server or a Cobra Web Service server, Cobra might infrequently encounter the "Subquery not found" error.

Customers Impacted: This defect affects customers who run reports or Cost Data Export processes on an n-tier server or a Cobra Web Service server.

Workaround Before Fix: None.

Files Updated:

- Cobra.WinUI.*.dll
- Cobra.WinUI.exe
- Cobra.Model.dll
- Cobra.Model.LoginManager.dll

Defect 1300517

Description: When you ran a batch report, Cobra encountered the error "The report <report name> owned by <previous owner> does not exist." if the report owner in the Included Reports-Batch Reports pane was different from the All Reports pane.

Customers Impacted: This defect affects customers who run a batch report.

Workaround Before Fix: None.

Files Updated:

- Cobra.WinUI.*.dll
- Cobra.WinUI.exe
- Cobra.Model.dll
- Cobra.Model.LoginManager.dll
- Cobra.Resources.dll

[Resources » Resource View](#)

Defect 184838

Description: When you renamed a resource, the parent field on the child resources was not updated to match the new parent resource.

Customers Impacted: This defect affects customers who access a resource file.

Workaround Before Fix: None.

Files Updated:

- Cobra.WinUI.*.dll
- Cobra.WinUI.exe
- Cobra.Model.dll
- Cobra.Model.LoginManager.dll

Database Changes

There are no database changes in this release.

Data Changes

There are no data changes in this release.

Documentation Changes

This section includes details of section changes in the printed documentation that are in addition to any enhancements.

Document	Details
Deltek Cobra 8.4 Help System	<ul style="list-style-type: none"> ▪ Updated the description for MethodId in the Calculate Progress Process help topic
<i>Deltek Cobra 8.4 Cumulative Update 05 Release Notes</i>	<ul style="list-style-type: none"> ▪ Updated the description of Cobra 8.4 CU05 Defect 1493227

Cobra 8.4 Cumulative Update 05

Released: August 13, 2021

Enhancements

This section includes enhancements in this release.

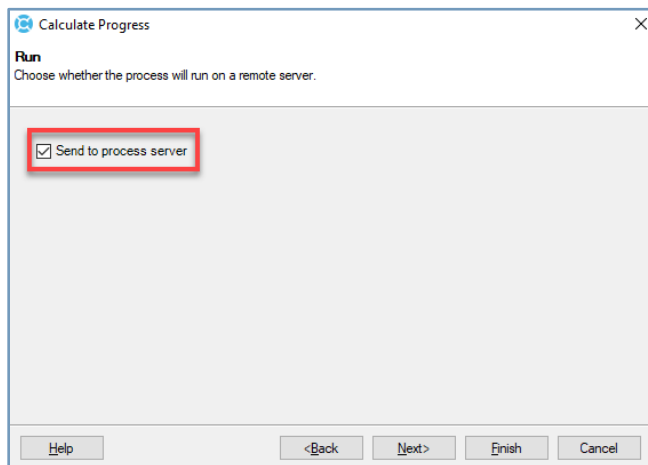
Support for Concurrent Progress Calculations

Cobra now supports concurrency in running progress calculations on batches of control accounts. For example, a project can be split into multiple jobs, with each job processing a different batch of control accounts concurrently.

To use this feature, you must understand the following information and requirements:

- You must know the [requirements](#) and [steps](#) to set up your environment to run a concurrent process.
- You are running the progress calculations against a single project.
- The apportionment mapping target is set to **<Same as Source>** or **<Same as Source> \ WP** for all control accounts in the apportionment mapping definition.
- You have specified the number of control accounts to process per batch in the **Control Accounts per queue** field on the [Data Access tab of the Application Preferences dialog box](#).

After you set up your environment for the concurrent progress calculations and you run the Calculate Progress Wizard, the [Run page](#) displays after the Options page.



Run Page of the Calculate Forecast Wizard

If you select the **Send to process server** check box, Cobra groups the control accounts into multiple batches (according to the value specified in the **Control Accounts per queue** field), queues the progress calculation job to the Process Server, and displays the Process Complete page immediately.

Attention: For more information, see the [“Concurrent Progress Calculations”](#) and [“Concurrency in Cobra”](#) help topics in the Cobra Help System.

Ability to Configure the Batch Limit When Running a Concurrent Process Through an Application Setting

Use the **Control Accounts per queue** field to specify the number of control accounts to process per batch when running a concurrent process. By default, this field is set to **100**. Possible values are between **1** and **999**. If the **Queue** field is cleared, this field becomes disabled but the specified value is retained.

The screenshot shows the 'Application Preferences' dialog box with the 'Data Access' tab selected. The 'Control Accounts per queue' field in the 'Process Server' section is highlighted with a red box. The field is a spinner control set to '100'. Other visible fields include 'Queue' (set to 'Process'), 'Interval to wait before retrying project lock' (set to '10'), and 'Maximum number of retries to open a busy file' (set to '100').

Data Access Tab of the Application Preferences Dialog Box

In version 8.3, Cobra used **CALCAPPORTIONMENTBATCHSIZE** defined in the SETTING table to determine the number of control accounts to process per batch when running a concurrent process. If it is present in the database, Cobra now ignores **CALCAPPORTIONMENTBATCHSIZE** and uses the value specified in the **Control Accounts per queue** field on the Data Access tab of the Application Preferences dialog box.

Note: For instructions to remove **CALCAPPORTIONMENTBATCHSIZE** in the database, refer to KB Article # 105447 in the Knowledge Center of the Deltek Support Center.

Attention: See the "[Data Access Tab of the Application Preferences Dialog Box](#)" and "[Concurrent Apportionment Calculations](#)" help topics in the Cobra Help System.

Software Issues Resolved

This section includes software issues resolved in this release.

API » Web Services

Defect 1486342

Description: When you ran the Calculate Progress process through the Cobra Web Service against a project with the **Use an adjusting entry to remove Progress from deleted budget** option selected and the **Progress by** option set to **Time**, Cobra incorrectly calculated the earned values.

Customers Impacted: This defect affects customers who use the Calculate Progress process through the Cobra Web Service.

Workaround Before Fix: None.

Files Updated:

- Cobra.WinUI.*.dll
- Cobra.WinUI.exe
- Cobra.Model.dll
- Cobra.Model.LoginManager.dll

Calendars

Defect 1493227

Description: When you performed any of the following to a calendar file, the USR_ID and LASTUPDATE fields of that calendar file were not updated:

- Added a new calendar period.
- Changed the date label of a calendar set.
- Changed the flag value of a calendar set.
- Updated the hours value.

Customers Impacted: This defect affects customers who access a calendar file.

Workaround Before Fix: None.

Files Updated:

- Cobra.WinUI.*.dll
- Cobra.WinUI.exe
- Cobra.Model.dll
- Cobra.Model.LoginManager.dll

Defect 1493229

Description: When you changed the label dates of a calendar set, the USR_ID and LASTUPDATE fields of the affected calendar periods were not updated.

Customers Impacted: This defect affects customers who access a calendar file.

Workaround Before Fix: None.

Files Updated:

- Cobra.WinUI.*.dll

- Cobra.WinUI.exe
- Cobra.Model.dll
- Cobra.Model.LoginManager.dll

Defect 1493235

Description: When you added a period to a calendar file, the USR_ID and LASTUPDATE fields of that calendar period were not updated.

Customers Impacted: This defect affects customers who access a calendar file.

Workaround Before Fix: None.

Files Updated:

- Cobra.WinUI.*.dll
- Cobra.WinUI.exe
- Cobra.Model.dll
- Cobra.Model.LoginManager.dll

Defect 1497539

Description: When you updated the description of a project or an ancillary file (calendar, code, or resource) using the Properties dialog box, the USR_ID and LASTUPDATE fields in the WST_DIR table of that project or ancillary file were not updated.

Customers Impacted: This defect affects customers who update the description of a project or an ancillary file using the Properties dialog box.

Workaround Before Fix: None.

Files Updated:

- Cobra.WinUI.*.dll
- Cobra.WinUI.exe
- Cobra.Model.dll
- Cobra.Model.LoginManager.dll

Codes

Defect 1493230

Description: When you changed the flags of periods in a calendar set, the USR_ID and LASTUPDATE fields of the calendar periods were not updated.

Customers Impacted: This defect affects customers who access a calendar file.

Workaround Before Fix: None.

Files Updated:

- Cobra.WinUI.*.dll
- Cobra.WinUI.exe
- Cobra.Model.dll

- Cobra.Model.LoginManager.dll

Defect 1493224

Description: When you deleted a code in a code file, the NUMCHILD, USR_ID, and LASTUPDATE fields of the parent code in the BDNDETL table were not updated.

Customers Impacted: This defect affects customers who delete codes in a code file.

Workaround Before Fix: None.

Files Updated:

- Cobra.WinUI.*.dll
- Cobra.WinUI.exe
- Cobra.Model.dll
- Cobra.Model.LoginManager.dll

[File » Backup](#)

Defect 1502130

Description: When you backed up a project, Cobra backed up all of the result columns instead of only the result columns of the project.

Customers Impacted: This defect affects customers who use the Backup function.

Workaround Before Fix: None.

Files Updated:

- Cobra.WinUI.*.dll
- Cobra.WinUI.exe
- Cobra.Process.dll

[File » Integration Wizard-Ancillary Data](#)

Defect 1492515

Description: When you ran the Integration-Ancillary Data Wizard to load a code file, the USR_ID and LASTUPDATE fields in the BDNDETL table of the affected codes were not updated.

Customers Impacted: This defect affects customers who import codes using the Integration-Ancillary Data Wizard.

Workaround Before Fix: None.

Files Updated:

- Cobra.WinUI.*.dll
- Cobra.WinUI.exe
- Cobra.Process.dll

Defect 1492516

Description: When you ran the Integration-Ancillary Data Wizard to load a resource file, the USR_ID and LASTUPDATE fields in the CALCDESC table of the affected resources were not updated.

Customers Impacted: This defect affects customers who import resources using the Integration - Ancillary Data Wizard.

Workaround Before Fix: None.

Files Updated:

- Cobra.WinUI.*.dll
- Cobra.WinUI.exe
- Cobra.Process.dll

Defect 1492517

Description: When you ran the Integration-Ancillary Data Wizard to load a calendar file, the USR_ID and LASTUPDATE fields of the affected calendar periods were not updated.

Customers Impacted: This defect affects customers who import calendars using the Integration-Ancillary Data Wizard.

Workaround Before Fix: None.

Files Updated:

- Cobra.WinUI.*.dll
- Cobra.WinUI.exe
- Cobra.Process.dll

[File » Integration Wizard-Project Data](#)

Defect 1503360

Description: When you ran the Integration Wizard to load control accounts and work packages only without resource assignments, and a new work package was being loaded with dates outside of the control accounts, the control account dates were not updated.

Customers Impacted: This defect affects customers who use the Integration Wizard to load control accounts and work packages only without resource assignments.

Workaround Before Fix: None.

Files Updated:

- Cobra.WinUI.*.dll
- Cobra.WinUI.exe
- Cobra.Process.dll

Project Processes » Calculate Progress

Defect 1498464

Description: When you ran the Calculate Progress Wizard and the apportionment mapping target was set to **<Same as Source>** or **<Same as Source> \ WP**, Cobra displayed incorrect warning messages informing you that no sources were found in the process logs.

Customers Impacted: This defect affects customers who use the Calculate Progress Wizard.

Workaround Before Fix: None.

Files Updated:

- Cobra.Process.dll
- Cobra.WinUI.exe
- Cobra.WinUI.*.dll

Reports » Reports

Defect 379024

Description: When you ran the Time-phased Repeat Sub report and cleared the **Show Total** check box for any of the criteria on the Sub-Totals page of the Report Wizard, the generated report showed zeroes on the subtotals.

Customers Impacted: This defect affects customers who run the Time-phased Repeat Sub report.

Workaround Before Fix: None.

Files Updated:

- Cobra.WinUI.*.dll
- Cobra.WinUI.exe
- Cobra.ReportLayoutEngine.dll

Defect 1496964

Description: When you ran the Time-phased Repeat Sub report, the rows were not correctly grouped by each criteria level.

Customers Impacted: This defect affects customers who run the Time-phased Repeat Sub report.

Workaround Before Fix: None.

Files Updated:

- Cobra.WinUI.*.dll
- Cobra.WinUI.exe
- Cobra.ReportLayoutEngine.dll

Database Changes

There are no database changes in this release.

Data Changes

There are no data changes in this release.

Documentation Changes

This section includes details of section changes in the printed documentation that are in addition to any enhancements.

Document	Details
Delttek Cobra 8.4 Help System	<ul style="list-style-type: none"> Created/updated the following help topics for the Support for Concurrent Progress Calculations feature: <ul style="list-style-type: none"> Concurrent Progress Calculations Run Concurrent Progress Calculations Run Page of the Calculate Forecast Wizard Data Access Tab of the Application Preferences Dialog Box Calculate Progress using the Calculated Apportionment Progress Technique Added the following note to the Class and Results Page of the Integration Wizard and Options Page of the Integration Wizard help topics: <i>"Make sure that the Allow recalculation of completed Control Accounts and Work Packages option on the Recalc Preferences dialog box is selected in order for Cobra to calculate the results of the completed work packages."</i>

Cobra 8.4 Cumulative Update 04

Released: July 27, 2021

Enhancements

This section includes enhancements in this release.

[Update of the Cobra Web Services DLLs to Support the 64-Bit Web Service Client](#)

The following Cobra Web Service DLLs are updated to support the 64-bit Web Service client:

- Cobra.Model.WebService.dll
- Cobra.WebService.ClientAPI.dll

Software Issues Resolved

This section includes software issues resolved in this release.

[Codes » Code View](#)

Defect 487242

Description: When you renamed a code in a code file, the parent field was not updated on the child codes of the renamed code.

Customers Impacted: This defect affects customers who access a code file.

Workaround Before Fix: None.

Files Updated:

- Cobra.WinUI.*.dll
- Cobra.WinUI.exe
- Cobra.Model.dll
- Cobra.Model.LoginManager.dll

[File » Integration Wizard-Project Data](#)

Defect 1424062

Description: When you ran the Integration Wizard on an n-tier deployment, the temporary files uploaded from the client were not deleted from the \Temp folder of the application server.

Customers Impacted: This defect affects customers who run Cobra on an n-tier deployment.

Workaround Before Fix: None.

Files Updated:

- Cobra.WinUI.*.dll
- Cobra.WinUI.exe

- Cobra.Model.dll
- Cobra.Model.LoginManager.dll

Defect 1476938

Description: When you ran the Integration Wizard against a project with a large COSTELEM table, Cobra crashed.

Customers Impacted: This defect affects all customers.

Workaround Before Fix: None.

Files Updated:

- Cobra.WinUI.*.dll
- Cobra.WinUI.exe
- Cobra.Process.dll

Project Processes » Calculate Forecast

Defect 1482037

Description: When you ran the Calculate Forecast Wizard against a forecast class with **PF= User Input** forecast method, and whose forecast performance factor level was set to **Control Account**, Cobra did not populate the forecast classes with **PF= User Input** forecast method on the Manual Performance Factors page.

Customers Impacted: This defect affects customers who use the Calculate Forecast Wizard on an Oracle database.

Workaround Before Fix: None.

Files Updated:

- Cobra.WinUI.*.dll
- Cobra.WinUI.exe
- Cobra.Process.dll

Project Processes » Replan

Defect 945673

Description: When you ran the Replan Wizard with the **Create a new Work Package for the replanned Budget/Progress/Actuals** option selected on the Options page and actual costs were set to be captured at the work package level, Cobra did not update the control account start date to encompass the new work package start date.

Customers Impacted: This defect affects customers who use the Replan Wizard.

Workaround Before Fix: Run the Validity Check Wizard with the **Adjust Control Account dates to exactly span Work Package dates** option selected on the Business Validations page.

Files Updated:

- Cobra.WinUI.*.dll
- Cobra.WinUI.exe

- Cobra.Process.dll

Database Changes

There are no database changes in this release.

Data Changes

There are no data changes in this release.

Documentation Changes

This section includes details of section changes in the printed documentation that are in addition to any enhancements.

Document	Details
<i>Deltek Cobra 8.4 Installation Guide</i>	<ul style="list-style-type: none"> ▪ Removed “Microsoft Excel 365 (ProPlus)” from the Supported Deployment Technology table
<i>Deltek Cobra 8.4 Technical Overview and System Requirements Guide</i>	<ul style="list-style-type: none"> ▪ Removed “Microsoft Excel 365 (ProPlus)” from the Supported Deployment Technology table
Deltek Cobra 8.4 Help System	<ul style="list-style-type: none"> ▪ Updated the Cobra Button node to align the help topics with the user interface
<i>Deltek Cobra 8.4 Cumulative Update 03 Release Notes</i>	<ul style="list-style-type: none"> ▪ Removed Defect 945673

Cobra 8.4 Cumulative Update 03

Released: May 28, 2021

Enhancements

There are no enhancements in this release.

Software Issues Resolved

This section includes software issues resolved in this release.

Help

Defect 1466116

Description: The Concurrent Apportionment Calculations help topic incorrectly mentioned that running concurrent apportionment calculations will process 100 control accounts per batch instead of 30.

Customers Impacted: This defect affects customers who access the Cobra Help System.

Workaround Before Fix: None.

Files Updated:

- Concurrent Apportionment Calculations.html

Defect 1464836

Description: The File Selection Page of the Integration Wizard Actuals and Field Mapper Page of the Integration Wizard help topics contained references to XLS format even if it was not supported.

Customers Impacted: This defect affects customers who access the Cobra Help System.

Workaround Before Fix: None.

Files Updated:

- Field Mapper Page of the Integration Wizard.html
- File Selection Page of the Integration Wizard Actuals.html

Project Processes » Calculate Forecast

Defect 1467347

Description: When you ran the Calculate Forecast Wizard, Cobra encountered the "Arithmetic overflow" error on a Microsoft SQL Server database or the "Value larger than specified precision" error on an Oracle database in the following scenarios:

- The **Calculate Performance factors** option on the Forecast Class Selection page was selected.
- The forecast method of the forecast class was PF=1/CPI.
- The Progress value to calculate CPI was close to zero (less than 0.005).

Customers Impacted: This defect affects customers who use the Calculate Progress Wizard.

Workaround Before Fix: For the total Progress with values between 0.001 and 0.01, manually update the total Progress resource assignments to zero.

Files Updated:

- Cobra.WinUI.*.dll
- Cobra.WinUI.exe
- Cobra.Process.dll

Project Processes » Replan

Defect 1457065

Description: When you ran the Replan Wizard on closed control accounts with actuals but without work packages and selected the **Budget = Progress = Actuals** option on the Method page, Cobra created two work packages with the same ID.

Customers Impacted: This defect affects customers who use the Replan Wizard.

Workaround Before Fix: None.

Files Updated:

- Cobra.Process.dll
- Cobra.WinUI.exe
- Cobra.WinUI.*.dll

Database Changes

There are no database changes in this release.

Data Changes

There are no data changes in this release.

Documentation Changes

This section includes details of section changes in the printed documentation that are in addition to any enhancements.

Document	Details
Deltek Cobra 8.4 Help System	<ul style="list-style-type: none">▪ Removed references to XLS format in the File Selection Page of the Integration Wizard Actuals and Field Mapper Page of the Integration Wizard help topics for Defect 1464836▪ Updated the number of default control accounts per batch to 30 in the Concurrent Apportionment Calculations help topic for Defect 1466116

Cobra 8.4 Cumulative Update 02

Released: May 06, 2021

Enhancements

There are no enhancements in this release.

Software Issues Resolved

This section includes software issues resolved in this release.

Explorer View

Defect 1443519

Description: When you used the Save As function to create a copy of an ancillary file, Cobra encountered the "The field 'SEQUENCE' / property 'Sequence' for table WST_DIR does not exist in the data dictionary" error.

Customers Impacted: This defect affects customers who upgraded from Cobra 8.2 or earlier version to Cobra 8.4 and who use the Save As function on an ancillary file.

Workaround Before Fix: Export the ancillary file by running an export report and import it back with a new name using the Integration Wizard.

Files Updated:

- Cobra.Model.dll
- Cobra.Model.LoginManager.dll
- Cobra.WinUI.*.dll
- Cobra.WinUI.exe

File » Integration Cost Data Export

Defect 1450704

Description: When you ran the Cost Data Export process against a large project, the process completion took longer than expected.

Customers Impacted: This defect affects customers who use the Cost Data Export process.

Workaround Before Fix: None.

Files Updated:

- Cobra.WinUI.*.dll
- Cobra.WinUI.exe
- Cobra.Model.dll
- Cobra.Model.LoginManager.dll
- PPM.CommonData.dll

Defect 1454325

Description: When you ran the Cost Data Export Wizard to generate the Integrated Program Management Data Analysis Report (IPMDAR) file, the ContractStartDate value in the generated file was incorrect.

Customers Impacted: This defect affects customers who use the Cost Data Export process to generate the IPMDAR file.

Workaround Before Fix: None.

Files Updated:

- Cobra.WinUI.*.dll
- Cobra.WinUI.exe
- Cobra.Model.dll
- Cobra.Model.LoginManager.dll

[File » Integration wInsight](#)

Defect 1455256

Description: When you ran the wInsight Export process to export a structure to the work package while actual costs were set to be captured at the control account level or both the control account and work package level and there were actuals in the past, Cobra encountered the "Must specify additional parameters. Procedure: addsinglepastperiod" error.

Customers Impacted: This defect affects customers who use the wInsight Export process.

Workaround Before Fix: None.

Files Updated:

- Cobra.WinUI.*.dll
- Cobra.WinUI.exe
- Cobra.Process.dll

Defect 794947

Description: When you ran the wInsight Export process against a master project but the calendar was not advanced at the master project level, Cobra displayed the "[Error] SQL Error calculating Baseline information" generic error message instead of a more descriptive one.

Customers Impacted: This defect affects customers who use the wInsight Export process on a master project.

Workaround Before Fix: Advance the calendar at the master project level.

Files Updated:

- Cobra.WinUI.*.dll
- Cobra.WinUI.exe
- Cobra.Process.dll

File » Integration Wizard-Project Data

Defect 1453098

Description: When you ran the Integration Wizard to load Open Plan data, Open Plan projects not shared with the WORLD or SYSADMIN group were not displayed on the Schedule Project Lookup dialog box even though the logged in user belonged to the SYSADMIN group. When you entered the name of the project in the **Schedule Project** field on the Project Selection page and clicked **Next**, Cobra displayed the "Invalid schedule project" error.

Customers Impacted: This defect affects customers who use the Integration Wizard to integrate with Open Plan.

Workaround Before Fix: Using Open Plan, share the project with the WORLD or SYSADMIN group.

Files Updated:

- Cobra.Process.dll
- Cobra.WinUI.exe
- Cobra.WinUI.*.dll

Defect 1457593

Description: When you ran the Integration Wizard, Cobra did not load all of the resource assignment codes.

Customers Impacted: This defect affects customers who use the Integration Wizard to load resource assignments codes.

Workaround Before Fix: None.

Files Updated:

- Cobra.WinUI.*.dll
- Cobra.WinUI.exe
- Cobra.Process.dll

Defect 1413609

Description: When you ran the Integration Wizard, Cobra changed the baseline finish date to the first day of the status date period if:

- The **Apply historical budget changes as an adjusting entry in the current status** period option on the Integration Wizard-Preferences tab of the Project Properties dialog box was selected when loading budget that affected the Budget at Completion (BAC).
- The baseline finish date was within the status period date range.

Customers Impacted: This defect affects customers who use the Integration Wizard.

Workaround Before Fix: None.

Files Updated:

- Cobra.WinUI.*.dll
- Cobra.WinUI.exe
- Cobra.Process.dll

Installation

Defect 1452828

Description: When you ran the Cobra Database Upgrade Wizard to upgrade your database from version 8.3 to 8.4, the InstallShield Wizard displayed the "Setup has detected a problem with the database upgrade" message even though the database version on the WST_PRD table was updated to 8.4.

Customers Impacted: This defect affects customers who use the Cobra Database Upgrade Wizard.

Workaround Before Fix: Upgrade your database from version 8.3 to 8.4 using the Cobra 8.4 installer.

Files Updated:

- DeltekCobra84DatabaseUpgradeWizard.exe

Defect 1192442

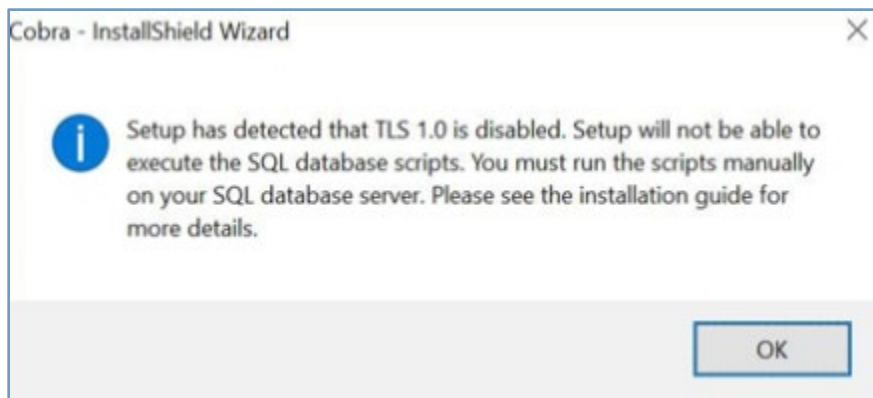
Description: When you installed Cobra on a MS SQL Server database, Cobra did not automatically run the Create or Upgrade scripts if TLS 1.0 was disabled.

Customers Impacted: This defect affects customers who install Cobra on a Microsoft SQL Server database with TLS 1.0 disabled, regardless of the operating system.

Workaround Before Fix: Do one of the following:

- Enable TLS 1.0 in the registry.
- Manually run the Create or Upgrade scripts for a MS SQL Server database.

Additional Notes: Previously, the InstallShield Wizard displayed the following message if it detected that TLS 1.0 was disabled on the machine where you were installing Cobra:



The Cobra installer now automatically executes the appropriate scripts and the following prerequisite software when it detects that you are using a MS SQL Server database:

- Microsoft ODBC Driver 17.3 for Microsoft SQL Server Database
- Microsoft Command Line Utilities 15 for Microsoft SQL Server Database

Note: See the [Documentation Changes](#) section for additional information.

Files Updated:

- DeltekCobra84.exe

Projects

Defect 1453575

Description: When you deleted or purged a project, related records on the LINK table and custom user tables were not deleted.

Customers Impacted: This affects customers who use the Delete Project and Purge Project functions.

Workaround Before Fix: Manually delete the orphaned records on the LINK table and custom user tables.

Files Updated:

- Cobra.Model.dll
- Cobra.Model.LoginManager.dll
- Cobra.WinUI.*.dll
- Cobra.WinUI.exe

Project Processes » Freeze Forecast

Defect 1455426

Description: When you ran the Freeze Forecast and filtered by **Control Account** or **Work Package** with multiple control accounts or work packages selected on the Criteria page, Cobra added the existing forecast values to the second control account instead of copying the existing forecast values.

Customers Impacted: This defect affects customers who use the Freeze Forecast Wizard.

Workaround Before Fix: None.

Files Updated:

- Cobra.Process.dll
- Cobra.WinUI.exe
- Cobra.WinUI.*.dll

Security

Defect 1444613

Description: When you launched EPM Security Administrator to define permissions for a role, the **Allow loading forecast in the current status period** option was not displayed in the **Projects » Project Properties » Preferences tab » Integration Wizard** node.

Customers Impacted: This defect affects customers who upgrade to Cobra 8.4 GA or Cobra 8.4 CU01 on a Microsoft SQL Server database and use EPM SA.

Workaround Before Fix: Run the following script:

```
"UPDATE WST_PFG
SET PFG_ID = '06.05.10.05.03'
WHERE PRD_UID = 600 AND PFG_UID = '60236'
AND PFG_ID != '06.05.10.05.03'"
```

Additional Notes: This defect is not encountered when performing a new installation of Cobra 8.4 GA or Cobra 8.4 Cumulative Update 01.

Files Updated:

- Cobra84_Upgrade_SqlServer.sql

Tools » Validity Check

Defect 1459309

Description: When you ran the Validity Check process, Cobra displayed the following warning message: "[Warning] The project log differs from the budget detail. Run Reconcile in Project Audit to align the log with the budget detail." If you followed the steps to reconcile the project log using the Project Audit Wizard and then ran the Validity Check process again, Cobra displayed the same warning message.

Customers Impacted: This defect affects customers who run the Validity Check process.

Workaround Before Fix: None.

Additional Notes:

- This issue only occurs if the audit log contains values that differ from the time-phased data by > 10c when summed over the entire project.
- This issue does not occur if you select the **Round audit log transactions to 6 decimal places** option on the Other tab of the Application Preferences dialog box.
- Once this fix is applied, Cobra may display the following different warning message when you run the Validity Check process: "[Warning] The project log disagrees with the project header. Open Project Audit to align the header values." Follow the steps to open the Project Audit Wizard to resolve the warning message.

Files Updated:

- Cobra.WinUI.*.dll
- Cobra.WinUI.exe
- Cobra.Process.dll

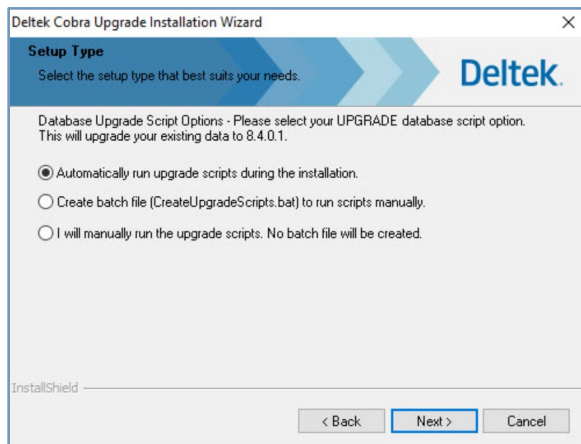
Database Changes

There are no database changes in this release.

Data Changes

This section includes changes to the data applied by script.

When upgrading from Cobra 8.4 GA or Cobra 8.4 Cumulative Update 01 to Cobra 8.4 Cumulative 02, the Upgrade Installation Wizard displays the Setup Type page and prompts you to select a database upgrade script option.



This step is needed to apply the fix for [Defect 1444613](#), which corrects the data on the WST_PFG table.

Note: This is only a data change and not a database structure change.

Documentation Changes

This section includes details of section changes in the printed documentation that are in addition to any enhancements.

Document	Details
<i>Deltek Cobra 8.4 Installation Guide</i>	<ul style="list-style-type: none"> Made the following updates for Defect 1192442: <ul style="list-style-type: none"> Added the following items to the Supported Deployment Technology » Embedded Technologies table: <ul style="list-style-type: none"> Microsoft ODBC Driver 17.3 for Microsoft SQL Server Database Microsoft Command Line Utilities 15 for Microsoft SQL Server Database Removed instances of the following note: <div data-bbox="516 1388 1419 1703" data-label="Image"> </div> Added bullets 2 and 3 to the following note:

Document	Details
	<div data-bbox="540 317 1164 430"> <p>Note: Cobra automatically installs the following prerequisite software:</p> <ul style="list-style-type: none"> Visual C++ Redistributable Packages for Visual Studio 2017 (x86) Microsoft ODBC Driver 17.3 for Microsoft SQL Server Database Microsoft Command Line Utilities 15 for Microsoft SQL Server Database </div>
<p><i>Deltek Cobra 8.4 Technical Overview and System Requirements Guide</i></p>	<ul style="list-style-type: none"> Added the following items to the Supported Deployment Technology » Embedded Technologies table for Defect 1192442: <ul style="list-style-type: none"> Microsoft ODBC Driver 17.3 for Microsoft SQL Server Database Microsoft Command Line Utilities 15 for Microsoft SQL Server Database

Cobra 8.4 Cumulative Update 01

Released: March 26, 2021

Enhancements

This section includes enhancements in this release.

Use a Replanned Class as a Target Class During Reclass Through the Cobra Web Service

When you run the Reclass process through the Cobra Web Service, you can now use a Replanned class as a Target class if the Source class is a Budget class (included or not included).

Attention: For more information on the Reclass process through the Cobra Web Service, see the [Web Service Client API Help System](#).

Software Issues Resolved

This section includes software issues resolved in this release.

API » PMC Web Services

Defect 1325684

Description: When you ran the Replan Wizard against a project with actual costs at the control account level or both the control account and work package level, and selected the **Create a new Work Package for the replanned Budget/Progress/Actuals** and the **Allow completed Work Package to be replanned** options on the Options page and the **Budget = Progress = Actuals** option on the Method page, Cobra created a duplicate work package incorrectly if you entered a work package prefix of an existing work package.

Customers Impacted: This defect affects customers who use the Replan process on projects with actuals costs at the control account level or both control account and work package level.

Workaround Before Fix: None.

Files Updated:

- Cobra.Process.dll
- Cobra.WinUI.exe
- Cobra.WinUI.*.dll

API » Web Services

Defect 1412670

Description: The Cobra Web Service did not support the Scale Retain EAC value of **None** and instead used **Currency** as the default value.

Customers Impacted: This defect affects customers who run the Calculate Forecast process through the Cobra Web Service.

Workaround Before Fix: None.

Files Updated:

- Cobra.Model.dll
- Cobra.Model.LoginManager.dll
- Cobra.Model.WebService.dll
- Cobra.WinUI.exe
- Cobra.WinUI.*.dll
- Cobra.Api.exe
- Cobra.WebService.Host.exe
- Cobra.WebService.dll
- Cobra.WebService.ClientAPI.dll

Defect 1413792

Description: When you ran a report that did not support roll up results through the Cobra Web Service, you encountered the "The Results criteria must be selected as the last sub-total criteria" error and the roll up results were incorrectly validated if the **RollupResults** parameter on the Report Definition tab of the Report Properties dialog box was set to **1**. When you ran a report through the Report Wizard, you also encountered the same error if the **AllowSelectCriteria** parameter was set to **1**.

Customers Impacted: This defect affects customers who generate reports.

Workaround Before Fix: None.

Additional Notes: Roll-up results are only supported in CrossTab and Summary report types.

Files Updated:

- Cobra.Model.dll
- Cobra.Model.LoginManager.dll
- Cobra.Model.WebService.dll
- Cobra.WebService.Host.exe
- Cobra.WebService.dll

Codes » Code View

Defect 1437008

Description: When you deleted a code from the code file and then added a new code, the tag of the last code from the code file was duplicated on the newly created code.

Customers Impacted: This defect affects customers who access a code file.

Workaround Before Fix: Rebuild the code file hierarchy.

Additional Notes: This issue is also encountered when accessing a resource file.

Files Updated:

- Cobra.WinUI.*.dll
- Cobra.WinUI.exe
- Cobra.Model.dll
- Cobra.Model.LoginManager.dll

File » Integration Cost Data Export

Defect 1434970

Description: When you ran the Cost Data Wizard and selected the **Use WBS/OBS combination as Control Account** option on the Data Options page, the description in the exported cost data file was not the WBS/OBS description.

Customers Impacted: This defect affects customers who use the Cost Data Export process.

Workaround Before Fix: None.

Files Updated:

- Cobra.WinUI.*.dll
- Cobra.WinUI.exe
- Cobra.Model.dll
- Cobra.Model.LoginManager.dll
- PPM.CommonData.dll

File » Integration Wizard-Project Data

Defect 1429047

Description: When you ran the Integration Wizard to load percent complete values from Open Plan and there were many activities in one work package, Cobra loaded the incorrect percent complete values.

Customers Impacted: This defect affects customers who use the Integration Wizard to load percent complete values from Open Plan.

Workaround Before Fix: None.

Files Updated:

- Cobra.WinUI.*.dll
- Cobra.WinUI.exe
- Cobra.Process.dll

Defect 1434811

Description: When you ran the Integration Wizard to load only budget resources and the project contained a forecast class with a prefix of the budget class ID being imported, Cobra did not load the resource assignments.

Customers Impacted: This defect affects customers who load resource assignments using the Integration Wizard.

Workaround Before Fix: None.

Files Updated:

- Cobra.WinUI.*.dll
- Cobra.WinUI.exe
- Cobra.Process.dll

Defect 1434917

Description: When you ran the Integration Wizard, Cobra encountered an error about not having enough memory to complete the operation in any of following conditions:

- The integration was run against a project with a large number of time-phased data.
- The data loaded was filtered by a specific budget or class.
- The **Delete items from Cobra that are no longer in the schedule** option on the Change Control page was selected.

Customers Impacted: This defect affects customers who use the Integration Wizard.

Workaround Before Fix: None.

Files Updated:

- Cobra.WinUI.*.dll
- Cobra.WinUI.exe
- Cobra.Process.dll

Defect 1433513

Description: When you ran the Integration Wizard to load resource assignments, resource assignments with similar names did not use the correct rate set.

Customers Impacted: This defect affects customers who use the Integration Wizard.

Workaround Before Fix: Run the Recalc Wizard.

Files Updated:

- Cobra.Process.dll
- Cobra.WinUI.exe
- Cobra.WinUI.*.dll

Projects » Project Information

Defect 394418

Description: When you copied an earned class, Cobra did not copy the Include in Progress information to the target project.

Customers Impacted: This defect affects customers who copy classes.

Workaround Before Fix: Manually add the new class to the Progress cost set.

Additional Notes: This issue is also encountered when copying a forecast class.

Files Updated:

- Cobra.WinUI.*.dll

- Cobra.WinUI.exe
- Cobra.Model.dll
- Cobra.Model.LoginManager.dll

Projects » Project View

Defect 1424171

Description: When you used the Move Work Package function, the control account was successfully moved to the selected target project but the time-phased records of the first control account listed in the source project got deleted.

Customers Impacted: This defect affects customers who use the Move Work Package function.

Workaround Before Fix: Use the Copy To function instead of the Move Work Package function. After the copy process completes, manually delete the control account.

Files Updated:

- Cobra.WinUI.*.dll
- Cobra.WinUI.exe
- Cobra.Process.dll

Reports » Report Information

Defect 1434993

Description: When you selected another user who already owned a report with the same name in the **Owner** field on the Access Control tab of the Report Properties dialog box, Cobra did not allow you to save the changes but did not display an error message.

Customers Impacted: This defect affects customers who use the Report Properties dialog box.

Workaround Before Fix: None.

Files Updated:

- Cobra.WinUI.*.dll
- Cobra.WinUI.exe
- Cobra.Resources.dll

Security

Defect 1432012

Description: When you edited any details of a project on the Project Properties dialog box, Cobra required user access to the calendar used by the project.

Customers Impacted: This defect affects customers who access the Project Properties dialog box.

Workaround Before Fix: Provide access to the calendar file used by the project.

Files Updated:

- Cobra.WinUI.*.dll

- Cobra.WinUI.exe
- Cobra.Model.dll
- Cobra.Model.LoginManager.dll
- Cobra.Resources.dll

Tools » Validity Check

Defect 1425308

Description: When you ran the Validity Check Wizard against a project that contained a control account with In progress status, but all of the work packages associated with it have Planned or Completed status, and selected the **Business validations » Adjust Control Account dates to exactly span Work Package dates** option on the Business Validations page, Cobra crashed with the " Unhandled Exception: Nullable object must have a value" error.

Customers Impacted: This defect affects customers who use the Validity Check Wizard.

Workaround Before Fix: None.

Files Updated:

- Cobra.WinUI.*.dll
- Cobra.WinUI.exe
- Cobra.Process.dll

Database Changes

There are no database changes in this release.

Data Changes

There are no data changes in this release.

Documentation Changes

This section includes details of section changes in the printed documentation that are in addition to any enhancements.

Document	Details
Deltek Cobra 8.4 Help System	<ul style="list-style-type: none"> ▪ Added a note about using a replanned class as a target class when running the Reclass process through the Cobra Web Service in the Target Class Page of the Reclass Wizard help topic

Appendix A: Download and Install the Cumulative Update

You can use Deltek Software Manager (DSM) to download complete Deltek products, hot fixes, cumulative updates, and sub-releases. You can access DSM through the Deltek Support Center or use Deltek Software Manager Lite to download Deltek products.

Access DSM and Download the Cumulative Update

Use these instructions to download the cumulative update from DSM.

To download the cumulative update:

1. Using your web browser, go to <https://dsm.deltek.com>.
2. Enter your Deltek Support Center **Username** and **Password**, and click **Login**.
3. When the Deltek Support Center page displays, click **Product Downloads**.
4. On the Deltek Software Manager screen, click **Launch Deltek Software Manager**.
5. Click **Run Deltek Software Manager**.
6. Log in using your Deltek Support Center credentials.
7. In the Deltek Software Manager dialog box, at the top right, click **Settings**.
8. In the Settings dialog box, specify the folder where you want to download the Deltek products, and click **OK**.

Note: When you log on for the first time, DSM asks you to select a default folder where Deltek products are to be downloaded. You can change this folder anytime in the Settings dialog box.

9. In the left pane, expand the Deltek product that you want to download, if it is not already expanded, and select **Cumulative Update**.
10. In the table, select the checkbox that corresponds to the cumulative update that you want to download.

The right pane displays a message stating that the product has been added to the download queue.

Note: To view the items in the download queue, click **View Download Queue** at the bottom of the left pane.

11. Click **Download** at the bottom of the left pane to download the product to the folder that you selected.

Install the Cumulative Update

The instructions for installing an update for Cobra 8.x and higher depend on your type of deployment. Use the instructions below that apply to your deployment scenario.

Note: You must install the entire update package. If an update addresses more than one defect, you cannot fix one defect at a time.

If You Use a Deployment Server

Use these instructions if you are using Cobra on a client/server (deployment server) deployment.

To install the cumulative update on the server:

1. Launch the update on the server.

Note: If the update detects that Cobra is already running, you will see a prompt asking if you want to close Cobra. Click **Yes** to start the installation, or click **No** to cancel the installation.

2. The Welcome screen displays the current build, along with the new build being installed by the update. Click **Next** to begin the installation.
The installation Wizard installs all necessary files and displays the Update Complete form.
3. Click **Finish**.
4. Depending on the type of update, a reboot may be required. If the option to reboot your computer is enabled, select it and click **Finish**.
5. Launch the Deltek Cobra shortcut on client workstations to initiate the update.

To install the cumulative update on a client workstation:

1. Launch the Deltek Cobra shortcut.
Cobra detects that an updated version is available and displays the prompt: **Do you want to install the upgrade?**
2. Click **Yes** to start the installation, or click **No** to cancel the installation.
When the installation is completed, the installation Wizard closes.
3. Launch the Deltek Cobra shortcut to log into Cobra.

If You Have an N-Tier Deployment

Use these instructions if you are using Cobra on an n-tier deployment.

To install the cumulative update on the server:

1. Launch the update on the server.

Note: If the update detects that Cobra is already running, you will see a prompt asking if you want to close Cobra. Click **Yes** to start the installation, or click **No** to cancel the installation.

2. The Welcome screen displays the current build, along with the new build being installed by the update. Click **Next** to begin the installation.
The installation Wizard installs all necessary files and displays the Update Complete form.
3. Click **Finish**.

4. Depending on the type of update, a reboot may be required. If the option to reboot your computer is enabled, select it and click **Finish**.
5. Launch the Deltek Cobra shortcut on n-tier client workstations to initiate the update.

To install the cumulative update on an n-tier client workstation:

1. Launch the Deltek Cobra shortcut.
Cobra detects that an updated version is available and displays the prompt: **Do you want to install the upgrade?**
2. Click **Yes** to start the installation, or click **No** to cancel the installation.
If you choose **Yes**, the installation Wizard copies the updated DeltekCobraWorkstation.exe file locally and automatically begins installing files. When the installation is completed, the installation Wizard closes.
3. Launch the Deltek Cobra shortcut to log into Cobra.

If You Have a Terminal Services/Citrix Deployment

Use these instructions if you are using Cobra on a terminal services/Citrix deployment.

To install the cumulative update on the deployment server:

1. Launch the update on the server.

Note: If the update detects that Cobra is already running, you will see a prompt asking if you want to close Cobra. Click **Yes** to start the installation, or click **No** to cancel the installation.

2. The Welcome screen displays the current build, along with the new build being installed by the update. Click **Next** to begin the installation.
The installation Wizard installs all necessary files and displays the Update Complete form.
3. Click **Finish**.
4. Depending on the type of update, a reboot may be required. If the option to reboot your computer is enabled, select it and click **Finish**.
5. Log on as a Local Administrator on the Terminal Server/Application Server and install the update.

To install the cumulative update on the Terminal Server/ Application Server (the server on which the Cobra client runs):

1. Log on to the Terminal Server using an account that has Local Administrator privileges.
When the setup launches, the installation program installs all necessary files and any registry updates and makes these changes available to all users who will subsequently log on to the Terminal Server session to run Cobra.
2. Ensure that no instance of Cobra is running.
3. Open the shared Cobra Workstation folder (usually located on the deployment server, as \\{DeploymentServerName}\CobraWorkstation\DeltekCobraWorkstation.exe).
4. Launch the DeltekCobraWorkstation.exe file to install the update.
The Welcome screen displays, showing that the update is available.
5. Click **Next** to start the installation.

6. When the installation completes, launch the Deltek Cobra shortcut to log into Cobra and confirm that the update is installed, meaning that users can now launch Cobra via Terminal Services/Citrix sessions.

If You Have a Stand-Alone Deployment

Use these instructions if you are using Cobra on a stand-alone deployment.


To install the cumulative update on the workstation:

1. Verify that Cobra is not running.
2. Launch the update on the server.
3. The Welcome screen displays the current build, along with the new build being installed by the update. Click **Next** to begin the installation.
The installation Wizard installs all necessary files and displays the Update Complete form.
4. Click **Finish**.
5. Depending on the type of update, a reboot may be required. If the option to reboot your computer is enabled, select it and click **Finish**.
6. Launch the Deltek Cobra shortcut to log into Cobra.

Confirm that the Cumulative Update Is Installed

Use these instructions to check that the version number reflects the installed cumulative update.

To confirm that the cumulative update is installed:

1. Click  » **Help » About Deltek Cobra**.
2. Check that the version number reflects the installation of the update.

Appendix B: For Additional Information

Deltek Support Center

The Deltek Support Center is a support website for Deltek customers who purchase an Ongoing Support Plan (OSP).

The following are some of the many options that the Deltek Support Center provides:

- Search for product documentation, such as release notes, install guides, technical information, online help topics, and white papers
- Ask questions, exchange ideas, and share knowledge with other Deltek customers through the Deltek Support Center Community
- Access Cloud-specific documents and forums
- Download the latest versions of your Deltek products
- Search Deltek's knowledge base
- Submit a support case and check on its progress
- Transfer requested files to a Deltek Customer Success analyst
- Subscribe to Deltek communications about your products and services
- Receive alerts of new Deltek releases and hot fixes
- Initiate a Chat to submit a question to a Deltek Customer Success analyst online

Attention: For more information regarding Deltek Support Center, refer to the online help available from the website.

Access Deltek Support Center

To access the Deltek Support Center:

1. Go to <https://deltek.custhelp.com>.
2. Enter your Deltek Support Center **Username** and **Password**.
3. Click **Login**.

Note: If you forget your username or password, you can click the **Need Help?** button on the login screen for help.



About Deltek

Better software means better projects. Deltek delivers software and information solutions that enable superior levels of project intelligence, management, and collaboration. Our industry-focused expertise makes your projects successful and helps you achieve performance that maximizes productivity and revenue. www.deltek.com