


# Deltek Maconomy® 2.4.5

BPM Install and Statutory Setup Guide

September 20, 2019



---

While Deltek has attempted to verify that the information in this document is accurate and complete, some typographical or technical errors may exist. The recipient of this document is solely responsible for all decisions relating to or use of the information provided herein.

The information contained in this publication is effective as of the publication date below and is subject to change without notice.

This publication contains proprietary information that is protected by copyright. All rights are reserved. No part of this document may be reproduced or transmitted in any form or by any means, electronic or mechanical, or translated into another language, without the prior written consent of Deltek, Inc.

This edition published September 2019.

© Deltek, Inc.

Deltek's software is also protected by copyright law and constitutes valuable confidential and proprietary information of Deltek, Inc. and its licensors. The Deltek software, and all related documentation, is provided for use only in accordance with the terms of the license agreement. Unauthorized reproduction or distribution of the program or any portion thereof could result in severe civil or criminal penalties.

All trademarks are the property of their respective owners.

---

---

# Contents

BPM Install Overview .....	1
Introduction.....	1
Installation Files .....	2
SAP BusinessObjects.....	2
Pentaho Data Integrator .....	2
Reporting Packing Unit (RPU).....	2
Licenses.....	3
Certified Versions .....	3
New Installation .....	4
Workflow .....	4
Enable BPM in Maconomy .....	4
Enable BPM in People Planner .....	5
Install SAP BusinessObjects .....	5
Enable JavaScript Content .....	6
Set up BPM Data Warehouse .....	6
Install Pentaho Data Integration Tools .....	6
Before You Begin.....	7
Perform Pentaho Installation .....	7
Activate PDI License.....	8
Using MS SQL Server as Pentaho Server Database .....	9
Using Oracle Server as Pentaho Server Database .....	15
Set Up Kettle.Properties .....	21
Set Up Parameters for BPM .....	21
Test the Value is Set Correctly .....	22
Prepare the Pentaho Repository .....	22
Create Database Users .....	23
Create Storage for BPM People Planner .....	24
Install the ETL.....	25
Create the Repository Connection.....	25
Import the BPM ETL .....	26
Create the Data Warehouse.....	26
Set Up a Connection to Maconomy / People Planner .....	27
Set Up the Table Space.....	27

---

---

Create the Data Warehouse .....	28
Data Warehouse Maintenance.....	30
Top-Level Jobs for Maintaining the Data Warehouse .....	30
Scheduling Loads .....	30
Process Manual Loads .....	31
Install Universes and Documents .....	32
Importing BIAR File with Promotion Management .....	32
Features .....	32
Implementation .....	33
Setting Universe Connection .....	34
Create a Project .....	35
Create a Relational Connection .....	35
Retrieve the Universe Files.....	37
Set Universe Connections and Publish .....	37
Set Up BPM Reporting Images .....	39
Set Up BPM Reporting Dashboard Components.....	40
Upgrade.....	41
Workflow .....	41
Upgrade ETL .....	41
Before You Begin .....	41
Upgrade the ETL and BPM Data Warehouse .....	41
Back Up the ETL .....	42
Upgrade the ETL and People Planner Data Warehouse .....	42
Upgrade Universes and Documents .....	43
Upgrade Customizations .....	44
Upgrading Custom ETL .....	44
Upgrading Custom Universes.....	44
Upgrade Custom Documents on Standard Universes .....	45
Upgrade Custom Documents on Custom Universes .....	45
Statutory .....	46
Overview.....	46
Compliance .....	46
Reporting Documents .....	46
SPU Installation .....	47
Prerequisites .....	47
Installation .....	47

---

---

Setup by Country.....	48
Belgium .....	48
France.....	48
Norway .....	48
Spain.....	60
Sweden .....	60
United Kingdom .....	61
Unites States.....	63
Customization .....	65
Workflow.....	65
Customizing ETL .....	65
General Rules .....	65
Transaction Time Stamps for Customized ETL.....	66
Customizing Universes.....	66
Customizing Report Documents.....	67
Customizing a Single Report .....	67
Customizing Multiple Reports .....	68
Customizing Document Styles.....	68
Customizing BPM Dashboards .....	70
Editing the JSP Files.....	70
Other Setup.....	75
In this section... ..	75
Install the Oracle Instant Client Drivers (Windows) .....	76
Set Up an ODBC Connection for SQL Server .....	78
Enable Unicode.....	81
Increase the Number of WebI Connections .....	82
Configure CharacterSet Settings if Using Oracle .....	83
User Setup and Single Sign-On.....	84
Example .....	84
Active Desktop and Maconomy Configurations.....	85
USync .....	85
Install USync .....	85
Create Users and Groups .....	86
Configuring a Tenant in a Multitenant Environment (Optional Installation) .....	87
Control which Users to Create.....	91
Error Handling.....	91

---

---

Assign Report and Universe Rights .....	92
Configure Logon Token in BusinessObjects .....	94
Increase Available Document Instances .....	94
Prevent Users from Using Outdated Tokens .....	94
Localization .....	95
BPM Translator Tool Overview .....	95
Perform a Translation .....	95
Generate the Initial XLIF File .....	95
Modify the Initial XLIFF File .....	99
Perform the Translation .....	99
Handling BusinessObjects Services .....	101
Change Start-Up Type .....	101
Remove Performance Manager .....	102
Use a Non-Standard Web Server Port .....	105
Set Templates for Web Intelligence .....	106
Enabling Cache and Pre-Load of Cache in ETL .....	106
Enable Caching Manually .....	106
Enable Caching Using an SQL Script .....	108
Servers with Low Memory (RAM) .....	109
Burst Publishing .....	111
Materialized Views on Oracle .....	112
JobEntryJobInvoiceLinePV .....	112
The Materialized View .....	112
The EX View .....	112
Explain the View Definition .....	112
Check the Materialized View .....	113
Flush the Shared Pool .....	114
Handling Issues .....	114
Troubleshooting .....	115
Determine BPM Version and Solution .....	115
Problem with Login to Infoview through the Portal .....	115

---

# BPM Install Overview

## Introduction

Business Performance Management (BPM) Reporting consists of a collection of universes and standard reports. Universes provide actuals, budget amounts, and dimensions for producing standard reports and ad hoc queries in Business Objects Web Intelligence. All standard reports run on Maconomy's transactional database through one or more universes.

This document provides steps for installing BPM Reporting and setting up Maconomy. This process includes:

- Installing and configuring SAP BusinessObjects.
- Importing universes and reports that are contained in Business Intelligence Archive Resource (BIAR) files.
- Managing users and single sign-on settings.
- Entering the necessary setup data in Maconomy.

This data is required for the universes and reports to work correctly. Detailed explanations of the setup procedures are included in appendices to this document.

For specific requirements for hardware, see the documentation for BusinessObjects, Pentaho, Maconomy, Oracle, and SQL Server.

**Tip:** This document does **not** contain information about hardware, sizing, performance tuning, or maintenance.

### **Note: Access Control**

In BPM, access control applies in the same way as in Maconomy. In BPM Analysis, access control is not applied on dimension tables. The reason is that the analysis universes are used in another way where fact tables are typically involved in queries. When doing so, access control applies in the same way as in Maconomy.

# Installation Files

## SAP BusinessObjects

SAP BusinessObjects is required for *BPM Reporting*, *BPM Analysis*, and *BPM People Planner*.

Installation files for SAP BusinessObjects (including SAP LiveOffice), are located on the download server:

<\\d\\applications\\Released\\BPM\\Business Objects\\BO BI 4.2\\4.2 SP 5>

## Pentaho Data Integrator

Pentaho Data Integrator is required for *BPM Analysis* and *BPM People Planner*.

Installation files for Pentaho Data Integrator, are located on the download server:

<\\d\\applications\\Released\\BPM\\Pentaho\\Pentaho Data Integration\\pdi-6.0.1-GA\\>

## Reporting Packing Unit (RPU)

The installation package containing BPM is comprised in a zipped folder called a *Reporting Packing Unit* (RPU).

RPUs are available in zipped format on the DSM under the matching Maconomy version as a sub-product.

An RPU is named after the version and solution it contains. For example,

```
rpu.standard.17.0.103.0
```

The general format of the folder name is:

```
rpu.<solution>.<main version>.<sub version>.<service pack>.<fix pack>
```

The solutions available are:

- Standard
- PSO
- CPA

A packing unit has the following content:

<b>biars</b>	<p>This folder contains a BIAR file for Oracle and one for MS SQL Server:</p> <pre> bpm-oracle.biar bpm-sqlserver.biar peopleplanner-oracle.biar peopleplanner-sqlserver.biar </pre> <p>Furthermore, it contains a file <code>bpmtoc.txt</code> which is a table-of-content file listing the CMS folders, documents and universes the bpm BIAR files contain.</p>
<b>css</b>	<p>This folder contains the file <code>bpmdefault.css</code> which provides WebI document the default BPM style. The file is only necessary to install if changes need to be made to the style of documents (see section 0)</p>
<b>dashboards</b>	<p>This folder contains the JSP files and additional files to be installed on the web server in order for BPM Reporting Dashboards to function (see section 0)</p>

---



## Installation Files

---

<b>dbcheckscripts</b>	This folder contains SQL scripts that can be executed on the Maconomy database in order to check that Maconomy setup supports BPM. The scripts are divided into two sub-folders - one for Oracle and one for MS SQL Server (see <i>Deltek Maconomy BPM Functional Setup Guide</i> for details).
<b>documentation</b>	This folder contains detailed documentation of the BPM universes. The documentation consists of an HTML file for each universe. This HTML file can be viewed in a browser and lists the folders, dimension objects, measure objects, attribute objects, and filters that the universe offers. For each object, a description is provided.
<b>etl</b>	This folder contains XML files for the ETL of BPM Analysis and BPM People Planner, respectively.
<b>performanceviews</b>	This folder contains drop and create scripts for the performance views of BPM Reporting. Furthermore, it contains scripts for installing the flush mechanism of the shared pool. Both performance views and the flush mechanism are installed using MConfig. It also contains drop scripts of the old MV-named performance views. The files in the folder are merely for documentation or relevant if manual installation or deinstallation is needed.

## Licenses

SAP BusinessObjects installation and Pentaho Installation require license keys and license files, respectively.

All licenses can be requested by contacting **Deltek Distribution** at [HQ-Distribution@deltek.com](mailto:HQ-Distribution@deltek.com).

## Certified Versions

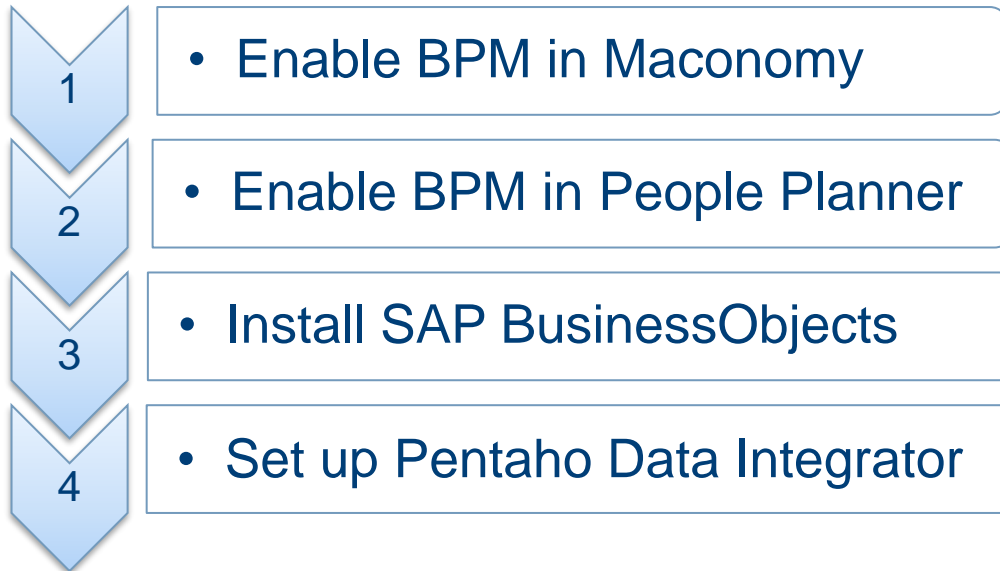
All certified versions of SAP BusinessObjects, Pentaho, and other BPM related tools and platforms, are stated in the Deltek Maconomy Supported Products document. Specific updates are announced in TechNews.

---

## New Installation

### Workflow

This process of new installation is divided into four main steps, described below.



### Enable BPM in Maconomy

Enabling BPM in MConfig is required for *BPM Reporting* and *BPM Analysis*.

To prepare the Maconomy database for BPM, enabling is needed. The enabling will install the necessary database views, triggers and indexes that BPM uses, on the Maconomy database.

1. Start MConfig and then select the relevant Maconomy application.
2. On the Application Configuration dialog box, select the relevant shortname, and click **Edit**.
3. On the Shortname Configuration dialog box, enable
  - **Reporting** to prepare for installing BPM Reporting
  - **Business Intelligence** to prepare for installing BPM Analysis.

Enabling **Reporting** will install EX-views and access control views for BPM Reporting. It will also install the necessary performance views and for Oracle databases a flushing mechanism that automatically cleans up in the shared pool.

Enabling **Business Intelligence** will install EX-views, apply transaction time stamps and trigger managing the marking of deleted records in Maconomy for certain tables.

4. Set a time for when the flushing mechanism is to run.

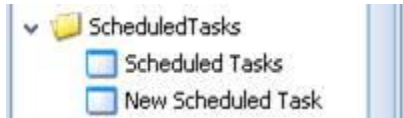
**Note:** If **BPM Reporting** or **BPM Analysis** is already enabled, but there are problems with the views, disable it, complete the installation change, and then complete the above steps again to reinstall the reporting views, transaction time stamps, and delete triggers.

## Enable BPM in People Planner

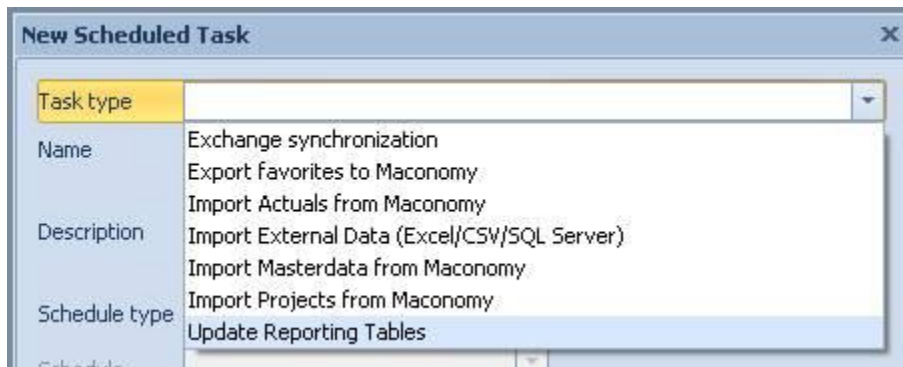
Enabling BPM in People planner is required for *BPM People Planner*.

You have to create a task in PeoplePlanner preparing data for ETL. Follow these steps:

1. Run CreateExternalViewsMSSQL.sql. This will create the required Views.
2. Select New Scheduled Task from the ScheduledTasks node in the Views:



3. Create a scheduled task with type Update Reporting Tables:



4. Set schedule for the Task.
5. Install the PeoplePlannerService (if it is not installed already.)

To refresh the data immediately, you can open the Scheduled Tasks window. There you can see your tasks and you can select the task and press the Execute button.

## Install SAP BusinessObjects

SAP BusinessObjects is required for *BPM Reporting*, *BPM Analysis*, and *BPM People Planner*.

Complete the steps of installing SAP BusinessObjects on the reporting server.

**Tip:** See the material at the link below for SAP Business Object tutorials.

<http://scn.sap.com/docs/DOC-7725>

---

**Tip:** If you have installed SAP BusinessObjects Business Intelligence 4.1 Support Pack 7 or BI 4.2 onward, it is recommended to disable the Enable Memory Analysis feature to improve performance.

If you are using an earlier version on the Windows Platform, enable this feature to prevent a possible crash of the Web Intelligence Processing Server.

**Note:** Ensure that you have enough RAM and monitor the memory usage of your server. If your server runs out of RAM, it will start to use swap, which may cause performance issues.

If you have limited RAM and you find your server is using swap, keep this feature enabled to ensure maximum performance.

When you upgrade to SAP BusinessObjects 4.2 SP5 Patch 5, you must enable JavaScript content in Web Intelligence to ensure links to the workspace client work.

## Enable JavaScript Content

**To enable JavaScript content in Web Intelligence, follow these steps:**

1. Log in to the Central Management Console (CMC).
2. Go to **Applications » Web Intelligence**.
3. Select the **Enable javascript content into Web Intelligence documents** check box.
4. Click **Save**.

## Set up BPM Data Warehouse

Pentaho Data Integrator is required for *BPM Analysis* and *BPM People Planner*. Where names for these two products differ, it is stated.

To set up Pentaho Data Integrator, you must:

- Install Pentaho Data Integration tools
- Set up Kettle.Properties
- Prepare the Pentaho repository
- Install the ETL
- Create the Data Warehouse

## Install Pentaho Data Integration Tools

Pentaho is the third-party tool that is used for data integration. You can download Pentaho Data Integration (PDI) from the Delttek download server.

**To install Pentaho data integration tools, you must:**

- Do all items listed in “Before You Begin”
  - Perform Pentaho integration
  - Activate the PDI license
-

## Before You Begin

Before you begin the installation of Pentaho, you must do the following:

- Uninstall previous versions of Pentaho.
- Delete the folders .kettle and .Pentaho, typically located on **C:\Users\<username>**.
- Ensure that J2SE Runtime Environment is installed and that the PATH environment variable references the Java SE folder. For 64-bit operating systems, you need to have JRE 32-bit installed.

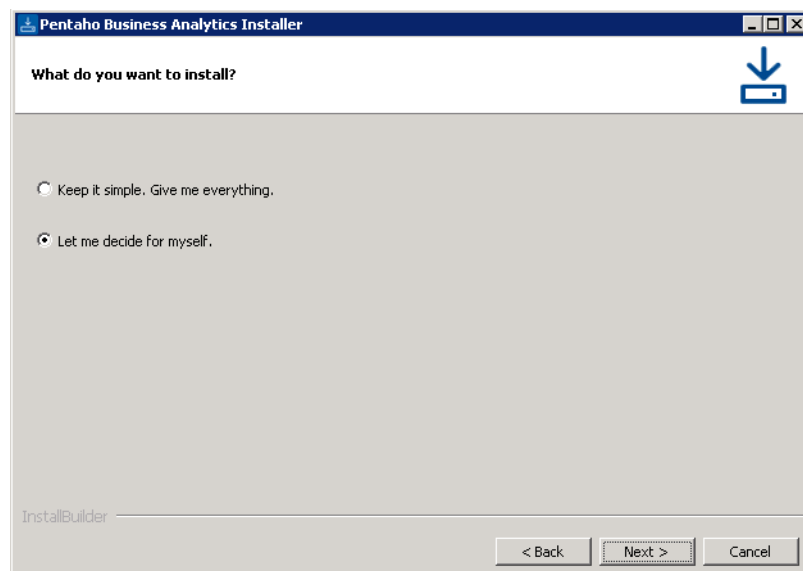
## Perform Pentaho Installation

There are various ways to install Pentaho: Evaluation, Archive, Manual, or Client tools only. However, this guide describes a quick way to start using the evaluation installation. The archive installation is described later for backend database customizations.

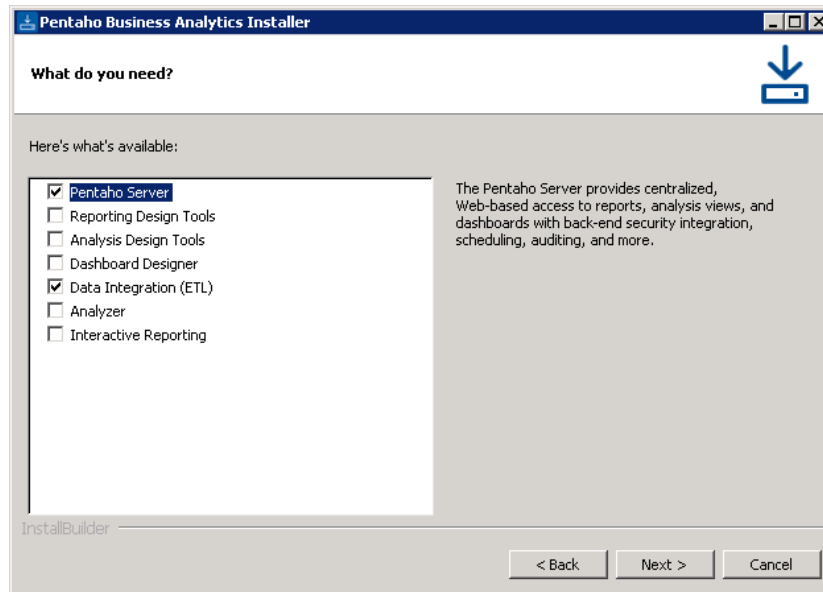
**Note:** More information about Pentaho installation is available in the [Pentaho documentation](#).

### To install Pentaho:

1. Run pentaho-business-analytics-8.2.0.0-342-x64.exe to open the installation wizard.
2. Accept the License Agreement, and then click **Next**.

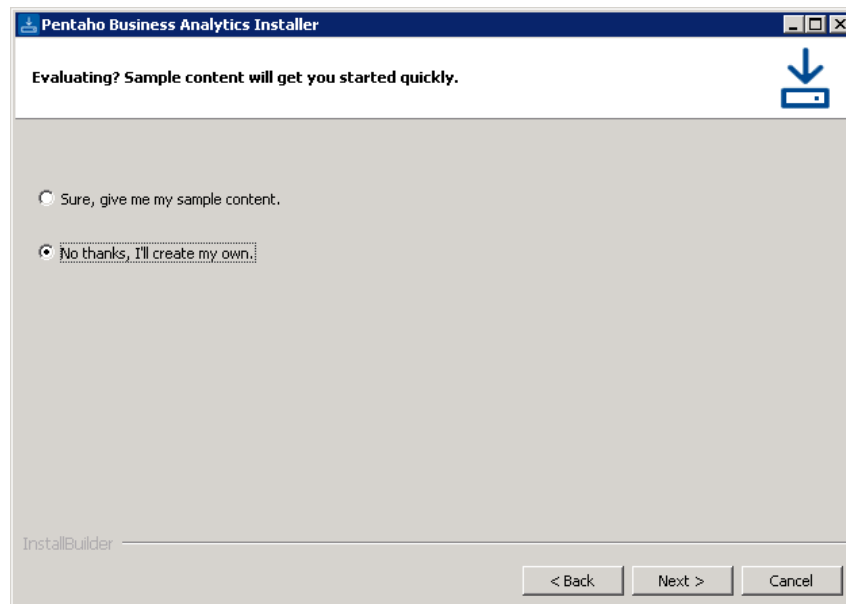


3. Select **Let me decide for myself**, and then click **Next**.
  4. Select **Pentaho Server and Data Integration ETL**, and then click **Next**.
-



Pentaho Server will host the repository. Data Integration (ETL) is the client tools.

5. Select **No thanks, I'll create my own** to skip generating sample contents.



6. Enter a password for the postgres user
7. Click **Next** until finished.
8. Once finished, a Pentaho Server is installed using tomcat and PostgreSQL as a database with Data Integration client tools.

## Activate PDI License

### To activate the PDI License

1. Log in to the Pentaho User Console.
2. Click the drop down menu on the upper left side of the screen and select **Administration**.

3. Select the Licenses tab.
4. In the upper right corner, click the + icon
5. Select the following files:
  - a. Pentaho BI Platform Enterprise Edition.lic
  - b. Pentaho PDI Enterprise Edition.lic

Alternatively, run **install\_license.bat** from **<Installation directory>\Pentaho\license-installer** in a command prompt or shell. Use each license file as argument as follows:

[install\\_license.bat install C:\Pentaho\license-installer\Pentaho BI Platform Enterprise Edition.lic](#)

## Using MS SQL Server as Pentaho Server Database

**Note:** More information is available [here](#).

### Prepare the environment

1. Extract pentaho-server-ee-8.2.0.0-342-dist.zip
2. Run installer.bat as Administrator.
3. Accept the license term agreement, then click **Next**.
4. Change the installation path to <Installation\_directory>/Pentaho/server.
5. A warning message that the directory already exists appears. Click **Yes**. Any existing files in the directory will be retained.

### Configuring MS SQL Pentaho Repository Database

**Note:** More information is available [here](#).

1. Adjust MS SQL Server configuration settings:
    - a. **Use mixed authentication** – on MS SQL Server Management Studio object explorer, right-click the server > Properties > Security > select SQL Server and Windows Authentication mode
    - b. **Enable TCP/IP for MS SQL Server** – on SQL Server Configuration Manager > SQL Server Network Configuration > Protocols for MSSQLSERVER > right-click TCP/IP > Enable
    - c. **Configure MS SQL Server to listen on an external IP and not localhost** - on SQL Server Configuration Manager > SQL Server Network Configuration > Protocols for MSSQLSERVER > right-click TCP/IP > Properties > IP Addresses > Update the IP Addresses
  2. Navigate to <INSTALL\_DIR>\server\pentaho-server\data\sqlserver to find the following SQL scripts:
    - a. Create\_jcr\_sqlServer.sql
    - b. Create\_repository\_sqlServer.sql
-

- c. Create\_quartz\_sqlServer.sql
3. To change the passwords, go to the pentaho/server/pentaho-server/data/sqlserver/ directory and use any text editor to change the passwords in the SQL scripts from item #2.
4. Run SQL Scripts using Microsoft SQL Server Management Studio in the following order:
  1. File > Open > File...
  2. Select all the scripts
  3. Execute each script

Alternatively, you can run the scripts using sqlcmd (Requires admin privileges)

- -i <filepath to DDL>/create\_quartz\_sqlServer.sql
  - -i <filepath to DDL>/create\_repository\_sqlServer.sql
  - -i <filepath to DDL>/create\_jcr\_sqlServer.sql
5. Verify that databases and user roles have been created:
    - a. Open MS SQL Server Management Studio.
    - b. In the Object Explorer section of the window, make sure that the Quartz, Jackrabbit (JCR), Hibernate, and Pentaho Operations Mart databases are present.
    - c. Navigate to Security > Logins and make sure that the appropriate users have been created.
    - d. Exit the MS SQL Server Management Studio tool.

### Setup Up Quartz

1. Open the <INSTALL\_DIR>/pentaho/server/pentaho-server/pentaho-solutions/system/quartz/quartz.properties file in any text editor.
2. Locate the #\_replace\_jobstore\_properties section and set the org.quartz.jobStore.driverDelegateClass as shown here.

```
org.quartz.jobStore.driverDelegateClass =
org.quartz.impl.jdbcjobstore.oracle.MSSQLDelegate
```

3. Locate the # Configure Datasources section and set the org.quartz.dataSource.myDS.jndiURL equal to Quartz, like this.
4. Save the file and close the text editor.

### Set Hibernate Settings

```
org.quartz.dataSource.myDS.jndiURL = Quartz
```

1. Open *INSTALL\_DIR*/pentaho/server/pentaho-server/pentaho-solutions/system/hibernate/hibernate-settings.xml file in any text editor.
  2. Change the <config-file> :  
 From: <config-file>system/hibernate/postgresql.hibernate.cfg.xml</config-file>  
 To: <config-file>system/hibernate/sqlserver.hibernate.cfg.xml</config-file>
-



3. Open <INSTALL\_DIR>/pentaho/server/pentaho-server/pentaho-solutions/system/hibernate/sqlserver.hibernate.cfg.xml and update the following properties:

**Note:** connection.username and connection.password is from create\_repository\_ora.sql

#### Set audit log file with SQL Server version

1. Copy the file <INSTALL\_DIR>/pentaho/server/pentaho-server/pentaho-solutions/system/oracle10g/audit\_sql.xml

```
<property
name="connection.driver_class">com.microsoft.sqlserver.jdbc.SQLServerDriver</proper
ty>
<property
name="connection.url">jdbc:sqlserver://<Server>:<port>;DatabaseName=<SID></property
>
<property name="dialect">org.hibernate.dialect.SQLServerDialect</property>
<property name="connection.username">hibuser</property>
```

2. Paste and replace the existing audit\_sql.xml in <INSTALL\_DIR>/pentaho/server/pentaho-server/pentaho-solutions/system/
-

## Set Jackrabbit Repository Information

1. Open `<INSTALL_DIR>/pentaho/server/pentaho-server/pentaho-solutions/system/jackrabbit/repository.xml` file in any text editor
2. Comment out (`<!--code-->`) the code section for PostgreSQL and uncomment the Oracle counterpart of the following and then update the parameters:

Code Section
<b>Repository</b> <pre> &lt;FileSystem class="org.apache.jackrabbit.core.fs.db.MSSqlFileSystem"&gt;   &lt;param name="driver" value="com.microsoft.sqlserver.jdbc.SQLServerDriver"/&gt;   &lt;param name="url" value="jdbc:sqlserver://&lt;Server&gt;:&lt;Port&gt;;DatabaseName=jackrabbit"/&gt;   &lt;param name="user" value="jcr_user"/&gt;   &lt;param name="password" value="password"/&gt;   &lt;param name="schemaObjectPrefix" value="fs_repos_"/&gt; &lt;/FileSystem&gt; </pre>
<b>DataStore</b> <pre> &lt;DataStore class="org.apache.jackrabbit.core.data.db.DbDataStore"&gt;   &lt;param name="url" value="jdbc:sqlserver://&lt;Server&gt;:&lt;Port&gt;;DatabaseName=jackrabbit"/&gt;   &lt;param name="driver" value="com.microsoft.sqlserver.jdbc.SQLServerDriver"/&gt;   &lt;param name="user" value="jcr_user"/&gt;   &lt;param name="password" value="password"/&gt;   &lt;param name="databaseType" value="mssql"/&gt;   &lt;param name="minRecordLength" value="1024"/&gt;   &lt;param name="maxConnections" value="3"/&gt;   &lt;param name="copyWhenReading" value="true"/&gt;   &lt;param name="tablePrefix" value=""/&gt;   &lt;param name="schemaObjectPrefix" value="ds_repos_"/&gt; &lt;/DataStore&gt; </pre>
<b>Workspaces</b> <pre> &lt;FileSystem class="org.apache.jackrabbit.core.fs.db.MSSqlFileSystem"&gt;   &lt;param name="driver" value="com.microsoft.sqlserver.jdbc.SQLServerDriver"/&gt;   &lt;param name="url" value="jdbc:sqlserver://&lt;Server&gt;:&lt;Port&gt;;DatabaseName=jackrabbit"/&gt;   &lt;param name="user" value="jcr_user"/&gt;   &lt;param name="password" value="password"/&gt;   &lt;param name="schema" value="mssql"/&gt;   &lt;param name="schemaObjectPrefix" value="fs_ws_"/&gt; &lt;/FileSystem&gt; </pre>
<b>Persistence Manager (Part 1)</b> <pre> &lt;PersistenceManager class="org.apache.jackrabbit.core.persistence.bundle.MSSqlPersistenceManager"&gt;   &lt;param name="url" value="jdbc:sqlserver://&lt;Server&gt;:&lt;Port&gt;;DatabaseName=jackrabbit "/&gt;   &lt;param name="driver" value="com.microsoft.sqlserver.jdbc.SQLServerDriver "/&gt;   &lt;param name="user" value="jcr_user"/&gt;   &lt;param name="password" value="password"/&gt;   &lt;param name="schema" value="mssql"/&gt;   &lt;param name="schemaObjectPrefix" value="\${wsp.name}_pm_ws_"/&gt; &lt;/PersistenceManager&gt; </pre>
<b>Versioning</b> <pre> &lt;FileSystem class="org.apache.jackrabbit.core.fs.db.MSSqlFileSystem"&gt;   &lt;param name="url" value="jdbc:sqlserver://&lt;Server&gt;:&lt;Port&gt;;DatabaseName=jackrabbit"/&gt;   &lt;param name="user" value="jcr_user"/&gt; </pre>

```
<param name="password" value="password"/>
<param name="schema" value="mssql"/>
<param name="schemaObjectPrefix" value="fs_ver_"/>
</FileSystem>
```

### Persistence Manager (Part 2)

```
<PersistenceManager
class="org.apache.jackrabbit.core.persistence.bundle.MSSqlPersistenceManager">
  <param name="url" value="jdbc:sqlserver://<Server>:<Port>;DatabaseName=jackrabbit"/>
  <param name="driver" value="com.microsoft.sqlserver.jdbc.SQLServerDriver"/>
  <param name="user" value="jcr_user"/>
  <param name="password" value="password"/>
  <param name="schema" value="mssql"/>
  <param name="schemaObjectPrefix" value="pm_ver_"/>
</PersistenceManager>
```

**Note:** "password" for jcr\_user is the one defined in create\_jcr\_oracle.sql.

3. Comment out the DatabaseJournal code section:

```
<!--
<Cluster id="node1">
  <Journal class="org.apache.jackrabbit.core.journal.DatabaseJournal">
    <param name="revision" value="${rep.home}/revision.log" />
    <param name="url" value="jdbc:postgresql://localhost:5432/jackrabbit"/>
    <param name="driver" value="org.postgresql.Driver"/>
    <param name="user" value="jcr_user"/>
    <param name="password" value="password"/>
    <param name="schema" value="postgresql"/>
    <param name="schemaObjectPrefix" value="cl_j_"/>
    <param name="janitorEnabled" value="true"/>
    <param name="janitorSleep" value="86400"/>
```

4. Apply JDBC Drivers to the Pentaho Server
    - a. Download the mssql-jdbc-6.2.2.jre8 from <TBD>
    - b. Copy the jar file to <INSTALL\_DIR>/pentaho/server/pentaho-server/tomcat/lib
-

## Update Tomcat Context XML File with JDBC Connection

1. Open `<INSTALL_DIR>/pentaho/server/pentaho-server/tomcat/webapps/pentaho/META-INF/context.xml` in any text editor
2. Comment out the existing `<Resources>` in the file and add the following lines:

```
<Resource
    validationQuery="select 1"
    url="jdbc:sqlserver:// <Server>:<Port>;DatabaseName=hibernate"
    driverClassName="com.microsoft.sqlserver.jdbc.SQLServerDriver"
    password="password" username="hibuser"
    initialSize="0" maxActive="20" maxIdle="10" maxWait="10000"
    factory="org.apache.tomcat.jdbc.pool.DataSourceFactory"
    type="javax.sql.DataSource" auth="Container" name="jdbc/Hibernate"/>

<Resource
    validationQuery="select 1"
    url="jdbc:sqlserver:// <Server>:<Port>;DatabaseName=hibernate"
    driverClassName="com.microsoft.sqlserver.jdbc.SQLServerDriver"
    password="password" username="hibuser"
    initialSize="0" maxActive="20" maxIdle="10" maxWait="10000"
    factory="org.apache.tomcat.jdbc.pool.DataSourceFactory"
    type="javax.sql.DataSource" auth="Container" name="jdbc/Audit"/>

<Resource
    validationQuery="select 1"
    url="jdbc:sqlserver:// <Server>:<Port>;DatabaseName=quartz"
    driverClassName="com.microsoft.sqlserver.jdbc.SQLServerDriver"
    password="password" username="pentaho_user"
    initialSize="0" maxActive="20" maxIdle="10" maxWait="10000"
    factory="org.apache.tomcat.jdbc.pool.DataSourceFactory"
    type="javax.sql.DataSource" auth="Container" name="jdbc/Quartz"/>

<Resource
    validationQuery="select 1"
    url="jdbc:sqlserver:// <Server>:<Port>;DatabaseName=pentaho_operations_mart"
    driverClassName="com.microsoft.sqlserver.jdbc.SQLServerDriver"
    password="password" username="pentaho_operations_mart"
    initialSize="0" maxActive="20" maxIdle="10" maxWait="10000"
```

**Note:** `jdbc/pentaho_operations_mart` and `jdbc/PDI_Operations_Mart` resources needs to be included even if it the `pentaho_mart_oracle.sql` was not run.

## Clean Pentaho Server Repository Cache

The evaluation installation created samples that are still referencing the previous PostgreSQL database. This need to be removed for Pentaho Repository to recreate the cache with the right database references. Follow these simple instructions:

1. Stop Pentaho Server
  - a. Open a command prompt
  - b. Run stop-pentaho.bat in <INSTALL\_DIR>/server/pentaho-server/
2. Navigate to <INSTALL\_DIR>/server/pentaho-server/pentaho-solutions/system/jackrabbit/
3. Rename or delete the repository folder.

## Start Pentaho Server

1. Open a command prompt
2. Run start-pentaho.bat as Administrator in <INSTALL\_DIR>/server/pentaho-server/
3. Verify that the server is running by opening Pentaho User Console. In any browser open http:<hostname>:<port>/pentaho

## Using Oracle Server as Pentaho Server Database

**Note:** More information is available [here](#).

## Prepare the environment

1. Extract pentaho-server-ee-8.2.0.0-342-dist.zip
2. Run installer.bat as Administrator
3. Accept the license term agreement, then click *Next*
4. Change the installation path to <Installation\_directory>/Pentaho/server
5. A warning message that the directory already exists appears. Click Yes. Any existing files in the directory will be retained.

## Configuring Oracle Pentaho Repository Database

**Note:** More information is available [here](#).

## Initialize Values

1. Navigate to <INSTALL\_DIR>\server\pentaho-server\data\oracle10g to find the following SQL scripts:
    - a. Create\_jcr\_ora.sql
    - b. Create\_repository\_oral.sql
    - c. Create\_quartz\_ora.sql
  2. Edit the above files and uncomment the following lines:
-

```
-- conn admin/password@pentaho
```

3. Update the files with the proper database credentials

Example when connecting to a remote host:

```
conn admin/password@(DESCRIPTION=(ADDRESS = (PROTOCOL = TCP)(HOST =
XXXXXXXXX)(PORT = 1521)))(CONNECT_DATA=(SERVER = DEDICATED)(SERVICE_NAME =
.....))
```

4. Update the default passwords in the SQL scripts

```
create user jcr_user identified by "password" ...
```

5. Run SQL Scripts using SQL\*Plus (or any Oracle SQL development tool) in the following order:
  - start <INSTALL\_DIR>/server/pentaho-server/data/oracle10g/create\_jcr\_ora.sql
  - start <INSTALL\_DIR>/server/pentaho-server/data/oracle10g/create\_repository\_ora.sql
  - start <INSTALL\_DIR>/server/pentaho-server/data/oracle10g/create\_quartz\_ora.sql
  - start <INSTALL\_DIR>/server/pentaho-server/data/oracle10g/pentaho\_mart\_ora.sql (*Optional*)
6. Verify that databases and user roles have been created by running the following in SQL\*Plus (or any Oracle SQL development tool):

```
SELECT USERNAME FROM DBA_USERS;
```

## Set Up Quartz

1. Open the <INSTALL\_DIR>/pentaho/server/pentaho-server/pentaho-solutions/system/quartz/quartz.properties file in any text editor.
2. Locate the #\_replace\_jobstore\_properties section and set the org.quartz.jobStore.driverDelegateClass as shown here.

```
org.quartz.jobStore.driverDelegateClass = org.quartz.impl.jdbcjobstore.oracle.OracleDelegate
```

3. Locate the # Configure Datasources section and set the org.quartz.dataSource.myDS.jndiURL equal to Quartz, like this.

```
org.quartz.dataSource.myDS.jndiURL = Quartz
```

- Save the file and close the text editor.

## Set Up Hibernate Settings

1. Open <INSTALL\_DIR>/pentaho/server/pentaho-server/pentaho-solutions/system/hibernate/hibernate-settings.xml file in any text editor and then change the <config-file>

From:

```
<config-file>system/hibernate/postgresql.hibernate.cfg.xml</config-file>
```

---

To:

```
<config-file>system/hibernate/oracle10g.hibernate.cfg.xml</config-file>
```

2. Open <INSTALL\_DIR>/pentaho/server/pentaho-server/pentaho-solutions/system/hibernate/oracle10g.hibernate.cfg.xml and update the following properties:

**Note:** Connection.username and connection.password is from create\_repository\_ora.sql.

### Set audit log file with Oracle version

```
<property name="connection.driver_class">oracle.jdbc.driver.OracleDriver</property>
<property name="connection.url">jdbc:oracle:thin:@<host>:<port>:<SID></property>
<property name="dialect">org.hibernate.dialect.Oracle10gDialect</property>
<property name="connection.username">hibuser</property>
<property name="connection.password"><password></property>
<property name="connection.pool_size">10</property>
<property name="show_sql">>false</property>
<property name="hibernate.jdbc.use_streams_for_binary">>true</property>
```

1. Copy the file <INSTALL\_DIR>/pentaho/server/pentaho-server/pentaho-solutions/system/oracle10g/audit\_sql.xml.
2. Paste and replace the existing audit\_sql.xml in <INSTALL\_DIR>/pentaho/server/pentaho-server/pentaho-solutions/system/.

### Set Jackrabbit Repository Information

1. Open <INSTALL\_DIR>/pentaho/server/pentaho-server/pentaho-solutions/system/jackrabbit/repository.xml file in any text editor
2. Comment out (<!--code -->) the code section for PostgreSQL and uncomment the Oracle counterpart of the following and then update the parameters:

#### Code Section

##### Repository

```
<FileSystem class="org.apache.jackrabbit.core.fs.db.OracleFileSystem">
  <param name="url" value="jdbc:oracle:thin:@<host>:<port>:<SID>" />
  <param name="user" value="jcr_user"/>
  <param name="password" value="password"/>
  <param name="schemaObjectPrefix" value="fs_repos_" />
  <param name="tablespace" value="pentaho_tablespace"/>
</FileSystem>
```

##### DataStore

```
<DataStore class="org.apache.jackrabbit.core.data.db.DbDataStore">
  <param name="url" value="jdbc:oracle:thin:@<host>:<port>/<SID>"/>
  <param name="driver" value="oracle.jdbc.OracleDriver"/>
  <param name="user" value="jcr_user"/>
  <param name="password" value="password"/>
  <param name="databaseType" value="oracle"/>
  <param name="minRecordLength" value="1024"/>
  <param name="maxConnections" value="3"/>
  <param name="copyWhenReading" value="true"/>
  <param name="tablePrefix" value=""/>
  <param name="schemaObjectPrefix" value="ds_repos_"/>
</DataStore>
```

#### Workspaces

```
<FileSystem class="org.apache.jackrabbit.core.fs.db.OracleFileSystem">
  <param name="url" value="jdbc:oracle:thin:@<host>:<port>/<SID>"/>
  <param name="user" value="jcr_user"/>
  <param name="password" value="password"/>
  <param name="schemaObjectPrefix" value="fs_ws_"/>
  <param name="tablespace" value="pentaho_tablespace"/>
</FileSystem>
```

#### Persistence Manager (Part 1)

```
<PersistenceManager
class="org.apache.jackrabbit.core.persistence.bundle.OraclePersistenceManager">
  <param name="url" value="jdbc:oracle:thin:@<host>:<port>/<SID>"/>
  <param name="driver" value="oracle.jdbc.OracleDriver"/>
  <param name="user" value="jcr_user"/>
  <param name="password" value="password"/>
  <param name="schema" value="oracle"/>
  <param name="schemaObjectPrefix" value="${wsp.name}_pm_ws_"/>
  <param name="tablespace" value="pentaho_tablespace"/>
</PersistenceManager>
```

#### Versioning

```
<FileSystem class="org.apache.jackrabbit.core.fs.db.OracleFileSystem">
  <param name="url" value="jdbc:oracle:thin:@<host>:<port>/<SID>"/>
  <param name="user" value="jcr_user"/>
  <param name="password" value="password"/>
  <param name="schemaObjectPrefix" value="fs_ver_"/>
  <param name="tablespace" value="pentaho_tablespace"/>
</FileSystem>
```

#### Persistence Manager (Part 2)



```
<PersistenceManager
class="org.apache.jackrabbit.core.persistence.bundle.OraclePersistenceManager">
  <param name="url" value="jdbc:oracle:thin:@<host>:<port>/<SID"/>
  <param name="driver" value="oracle.jdbc.OracleDriver"/>
  <param name="user" value="jcr_user"/>
  <param name="password" value="password"/>
  <param name="schema" value="oracle"/>
  <param name="schemaObjectPrefix" value="pm_ver_"/>
  <param name="tablespace" value="pentaho_tablespace"/>
</PersistenceManager>
```

**Note:** “password” for jcr\_user is the one defined in create\_jcr\_ora.sql.

3. Comment out the DatabaseJournal code section:

```
<!--
<Cluster id="node1">
  <Journal class="org.apache.jackrabbit.core.journal.DatabaseJournal">
    <param name="revision" value="{rep.home}/revision.log" />
    <param name="url" value="jdbc:postgresql://localhost:5432/jackrabbit"/>
    <param name="driver" value="org.postgresql.Driver"/>
    <param name="user" value="jcr_user"/>
    <param name="password" value="password"/>
    <param name="schema" value="postgresql"/>
    <param name="schemaObjectPrefix" value="cl_j_"/>
    <param name="janitorEnabled" value="true"/>
    <param name="janitorSleep" value="86400"/>
    <param name="janitorFirstRunHourOfDay" value="3"/>
  </Journal>
</Cluster>
```

## Apply JDBC Drivers to the Pentaho Server

1. Download the ojdbc8.jar oracle driver.
2. Copy the jar file to <INSTALL\_DIR>/pentaho/server/tomcat/lib

## Update Tomcat Context XML File with JDBC Connection

1. Open <INSTALL\_DIR>/pentaho/server/tomcat/webapps/pentaho/META-INF/context.xml in any text editor.
  2. Comment out the existing <Resources> in the file and add the following lines:
-

```
<Resource
  validationQuery="select 1 from dual"
  url="jdbc:oracle:thin:@<host>:<port>/<SID>"
  driverClassName="oracle.jdbc.OracleDriver"
  password="password" username="hibuser"
  maxWaitMillis="10000" maxIdle="5" maxTotal="20"
  factory="org.apache.commons.dbcp.BasicDataSourceFactory"
  type="javax.sql.DataSource" auth="Container" name="jdbc/Hibernate"/>

<Resource
  validationQuery="select 1 from dual"
  url="jdbc:oracle:thin:@<host>:<port>/<SID>"
  driverClassName="oracle.jdbc.OracleDriver"
  password="password" username="hibuser"
  maxWaitMillis="10000" maxIdle="5" maxTotal="20"
  factory="org.apache.commons.dbcp.BasicDataSourceFactory"
  type="javax.sql.DataSource" auth="Container" name="jdbc/Audit"/>

<Resource
  validationQuery="select 1 from dual"
  url="jdbc:oracle:thin:@<host>:<port>/<SID>"
  driverClassName="oracle.jdbc.OracleDriver"
  password="password" username="quartz"
  maxWaitMillis="10000" maxIdle="5" maxTotal="20"
  factory="org.apache.commons.dbcp.BasicDataSourceFactory"
  type="javax.sql.DataSource" auth="Container" name="jdbc/Quartz"/>

<Resource
  validationQuery="select 1 from dual"
  url="jdbc:oracle:thin:@<host>:<port>/<SID>"
  driverClassName="oracle.jdbc.OracleDriver"
  password="password" username="hibuser"
  maxWaitMillis="10000" maxIdle="5" maxTotal="20"
  factory="org.apache.commons.dbcp.BasicDataSourceFactory"
  type="javax.sql.DataSource" auth="Container" name="jdbc/pentaho_operations_mart"/>

<Resource
  validationQuery="select 1 from dual"
  url="jdbc:oracle:thin:@<host>:<port>/<SID>"
  driverClassName="oracle.jdbc.OracleDriver"
  password="pentaho_operations_mart" username="pentaho_operations_mart"
  maxWaitMillis="10000" maxIdle="5" maxTotal="20"
  factory="org.apache.commons.dbcp.BasicDataSourceFactory" type="javax.sql.DataSource"
  auth="Container" name="jdbc/PDI_Operations_Mart"/>
```

**Note:** Jdbc/pentaho\_operations\_mart and jdbc/PDI\_Operations\_Mart resources needs to be included even if the pentaho\_mart\_oracle.sql was not run.

## Clean Pentaho Server Repository Cache

The evaluation installation created samples that are still referencing the previous PostgreSQL database. This needs to be removed for Pentaho Repository to recreate the cache with the right database references. Follow these simple instructions:

1. Stop Pentaho Server
  - a. Open a command prompt
  - b. Run stop-pentaho.bat in `<INSTALL_DIR>/server/pentaho-server/`
2. Navigate to `<INSTALL_DIR>/server/pentaho-server/pentaho-solutions/system/jackrabbit/`
3. Rename or delete the repository folder.

## Start Pentaho Server

1. Open a command prompt
1. Run start-pentaho.bat as Administrator in `<INSTALL_DIR>/server/pentaho-server/`
2. Verify that the server is running by opening Pentaho User Console. In any browser open `http:<hostname>:<port>/pentaho`.

## Set Up Kettle.Properties

The **Pentaho Data Integrator** reads a properties file called **kettle.properties**. For *BPM Analysis* and *BPM People Planner*, you must include some parameters in that file. The file is created the first time a Pentaho application is started, if it does not exist already.

By default the Kettle.Properties file is located in:

**C:\Users\<username>\.kettle\**

**Note:** In Unix/Linux, the **.kettle** folder is placed in the **\$HOME** folder.

If multiple users are to share the properties, we recommend you to make a copy of the file to another commonly accessible folder. Create a new system environment variable KETTLE\_HOME and assign the path of the file to that variable. After this is done and a Pentaho application is run, the folder .kettle is created automatically in the path designated by KETTLE\_HOME. Make sure to copy the .kettle.properties file down into that folder.

To set up Kettle.Properties, you must:

- Set up parameters for BPM
- Test the value is set correctly

## Set Up Parameters for BPM

**To set up parameters for BPM, follow these steps:**

1. Open the kettle.properties in a text editor.
  2. Delete the lines that have “dilog”.
-

```
KETTLE_JOB_LOG_SCHEMA=pentaho_dilogs  
KETTLE_TRANS_PERFORMANCE_LOG_SCHEMA=pentaho_dilogs  
KETTLE_METRICS_LOG_SCHEMA=pentaho_dilogs  
KETTLE_JOBENTRY_LOG_SCHEMA=pentaho_dilogs  
KETTLE_CHANNEL_LOG_SCHEMA=pentaho_dilogs  
KETTLE_STEP_LOG_SCHEMA=pentaho_dilogs  
KETTLE_TRANS_LOG_SCHEMA=pentaho_dilogs
```

3. If the Maconomy database runs Oracle, add the parameter:

```
MAC_CONNECTION_TYPE=ORACLE
```

If the Maconomy database runs MS SQL Server, add the parameter:

```
MAC_CONNECTION_TYPE=SQL
```

4. If the Data Warehouse runs Oracle, add the parameter:

```
DWH_CONNECTION_TYPE=ORACLE
```

If the Maconomy database runs MS SQL Server, add the parameter:

```
DWH_CONNECTION_TYPE=SQL
```

5. Add the parameter stating whether to run a *full load* or an *incremental load*.

```
FULL_LOAD=YES
```

The FULL\_LOAD parameter is not used in the pure standard flows of creating a data warehouse or performing a full or incremental load. These Pentaho jobs set the parameter themselves. But if other jobs are run the parameter may be read.

**Note:** Pentaho tools read these variables when starting. Whenever a Pentaho tool is open at the moment of resetting the variables, you must restart the tool to use new variable settings.

## Test the Value is Set Correctly

To test that the value has been set correctly, run the "*Test FULL\_LOAD variable*" transformation. The job is part of the BPM Analysis ETL and will be available after you have installed that in section 0.

## Prepare the Pentaho Repository

The Pentaho Data Integration tool requires a repository for the ETL and the creation of the actual data warehouse database.

- The database user PENTAHO\_REPOS stores jobs and transformations in Pentaho.
- The database user MACONOMY\_DWH to stores the BPM Analysis data warehouse.

The repository and the data warehouse database are two individual database users that must be created and have the right access granted. It is possible to have the former on Oracle and the latter on SQL Server, or the other way around, or both on the same. The following section discusses how to create the repository and the data warehouse database users in Oracle and SQL Server, respectively.

To prepare the Pentaho repository, you must:

---

- Create database users in either Oracle or SQL Server
- Create storage for BPM People Planner

## Create Database Users

### To create database users in Oracle:

1. From the command prompt, run the following:

```
sqlplus system/manager
```

It may be necessary to specifically connect to the database to be used. If you want to use separate database users for the PentaHo repository and the BPM DWH, you must process the steps related to these two users on separate databases.

2. In sqlplus, enter the following:

```
create user PENTAHO_REPOS identified by PENTAHO_REPOS;
create user MACONOMY_DWH identified by MACONOMY_DWH;
grant connect, resource to PENTAHO_REPOS;
grant dba to MACONOMY_DWH;
grant unlimited tablespace to PENTAHO_REPOS;
```

3. If you do not want to use default database settings for the user's default table space and temporary table space, you can change them with statements such as the following in sqlplus:

```
alter user PENTAHO_REPOS default table space <x1> temporary table space <y1>;
alter user MACONOMY_DWH default table space <x2> temporary table space <y2>;
where <x1>, <x2>, <y1>, <y2> should be replaced by relevant values.
```

4. To confirm that the settings work, enter the following:

```
connect PENTAHO_REPOS/ PENTAHO_REPOS;
connect MACONOMY_DWH / MACONOMY_DWH;
```

6. Exit sqlplus.

### To create database users in MS SQL Server:

1. Log in to Microsoft SQL Server Management Studio with the user name **sa**.
2. Right-click **Databases** and create the following databases:

- PENTAHO\_REPOS
- MACONOMY\_DWH

3. In the Options tab, set collation to **SQL\_Latin1\_General\_CP1\_CS\_AS**.

**Note:** This makes the SQL data warehouse case-sensitive to match with Maconomy database for an accurate comparison of data for the ETL.

4. Expand **Security**, right-click **Logins**, and select **New Login**.
  5. Enter the name **PENTAHO\_REPOS** for the login.
  6. Set **Authentication** to **SQL Server Authentication**.
  7. Enter a password (for example, PENTAHO\_REPOS).
  8. Disable **Enforce Password Policy**.
-

9. On the left-hand side of the window, click **User Mappings**.
10. On the User Mappings dialog box, map the database to the corresponding user.
11. Specify the role **db\_owner**.
12. Click **OK**.
13. Right-click **Logins** and create the user **MACONOMY\_DWH**.
14. Set **Authentication** to **SQL Server Authentication**.
15. Disable **Enforce Password Policy**.
16. Enter a password (for example, MACONOMY\_DWH).
17. On the User Mappings dialog box, map the database to the corresponding user.
18. Specify the role **db\_owner**.
19. To check that the databases work, log out and then log in again with each of the credentials.

**Note:** The Oracle database for the BPM data warehouse requires a table space called `macindex_dwh`, where indexes for the DWH are created. This table space must be created in addition to the normal table space of `MACONOMY_DWH`.

For more information, see [Build the BPM Data Warehouse](#).

## Create Storage for BPM People Planner

Use the steps above to create storage for BPM People Planner. Replace (what) with the user `PEOPLEPLANNER_DWH`.

**For BPM People Planner other parameters in the Kettle Properties file are needed:**

```
#DWH_CONNECTION_TYPE = ORACLE

DWH_CONNECTION_TYPE = SQL

#PP_CONNECTION_TYPE = ORACLE

PP_CONNECTION_TYPE = SQL

#PP_STAND_ALONE = YES

PP_STAND_ALONE = NO

# How many years old AvailableHours data should be loaded into DWH

PP_ACTUAL_YEAR_RANGE_MIN = 2

# How many years in future since current date

# should be loaded for AvailableHours into DWH

PP_ACTUAL_YEAR_RANGE_MIN = 2
```

The “#” symbol means that all strings following it are comments. By changing its position, you can switch which RDBMS system to use to access the DWH database and which one to use for PeoplePlanner.

---

Parameter PP\_STAND\_ALONE defines how PeoplePlanner is used, meaning, is it used in integration with Maconomy system or as a standalone system.

**Note:** Existing Business Performance Management PeoplePlanner Reporting assumes that PeoplePlanner is used in integration with Maconomy – so, the reports do not work for a stand-alone solution (in this case you will be able to use the DWH only).

The last two parameters define how many years before and after the current date should be loaded in the DWH.

**Warning:** Remember that for every additional year, a significant number of additional data is loaded. Therefore, use these parameters with care and only include the number of years required to cover the user's business needs.

## Install the ETL

The ETL (Extract-Transform-Load) is the mechanism which reads (extracts) data from Maconomy or People Planner, transforms it, and stores it (loads it) in the data warehouse database.

The steps below take origin in a data warehouse on Oracle. If the data warehouse is on MS SQL Server, change the connection type from Oracle to MS SQL Server accordingly.


Furthermore, the steps assume the setup of a data warehouse for BPM Analysis (Maconomy). If a data warehouse is set up for BPM People Planner, import the DataIntegrationRepository.xml from the *peopleplanner* folder in the RPU.

To install the ETL, you must:

- Create the repository connection.
- Import the BPM ETL. The file name is DataIntegrationRepository.xml.
  - Standard ETL is under etl\reporting
  - PeoplePlanner ETL is under etl\peopleplanner

## Create the Repository Connection

To create the repository connection, follow these steps:

1. Run **Spoon.bat**.
  2. Select **Tools > Repository > Connect...**
  3. In the **Repository Connection** window, click  to create a repository.
  4. In the **Select the repository type** window, select **Kettle database repository**.
  5. In the **Repository information** window, click **New** to create a connection.
  6. On the Connection Information dialog box, enter the following details:
    - **Connection Name** — Pentaho repository.
    - **Connection Type** — Oracle or MS SQL Server.
    - **Access Method** — Native (JDBC).
    - **Server Host Name** — <Name of the DWH server running the ETL>.
-

- **Database Name** — Maconomy (or perhaps macuni). This is the name of the SID for Oracle databases. For MS SQL, the database name is the Maconomy shortname. For Oracle, the name is SID or Net8ID, as already mentioned.
- **Port Number** — MS SQL default port is 1433. Oracle default port is 1521.
- **User Name** — PENTAHO\_REPOS
- **Password** — PENTAHO\_REPOS

**Note:** When using MS SQL Server as database type for the repository, you need to uncheck "Support the Boolean data type" under the Advanced tab. Otherwise, the system throws an error after you click "Create or Upgrade" in step 8.

7. Click **Test**. If the result of the test connection is an error, check for the following issues:

- The built-in firewall is blocking Java.
- No listener was set up.
- No database JDBC drivers are available.

When the test runs successfully, click **OK** to continue.

8. On the Repository Information dialog box, enter the repository the name and description Pentaho repository, and click **Create or Upgrade**.

(In Pentaho 5 and newer, you are able to execute a *dry-run* of the generated SQL that creates the repository. Use this to test whether the creation is to be a success.)

9. Log in with username **admin** and password **admin**.

## Import the BPM ETL

To import the BPM ETL, follow these steps:

1. Select **Tools > Repository > Import Repository...**
2. Browse to the location of the *BPM Analysis* or *BPM People Planner* ETL XML file. The file is named *DataIntegrationRepository.xml*.
3. At the prompt "Do you want to apply a set of rules to the import?" select **No**.
4. Select the root as directory (default). Click **OK**.
5. Click **Yes** to create the suggested folders. The transformations and jobs are now imported.
6. Click **Close**.

**Tip:** Pentaho Data Integration 5.4 has a high memory consumption. See the [Servers with Low Memory \(RAM\)](#) for details on disabling Data Integration Server to boost performance.

## Create the Data Warehouse

This section describes how to create and load the data warehouse. To prepare for creating the data warehouse, you must set up the connections to the Maconomy/People Planner database and the data warehouse database. Then you must run the ETL job that creates the data warehouse itself. All this is done in Spoon.




To create the data warehouse, you must:

- Set up a connection to Maconomy / People Planner
- Set up the Table Space
- Create the data warehouse

## Set Up a Connection to Maconomy / People Planner

To set up a connection to Maconomy / People Planner, follow these steps:

1. Select **Tools > Repository > Explore...**
2. Switch to the **Connections** tab.

3. Select the **Maconomy** connection and click .

Fill in the following fields:

- **Host Name** – Enter the name of the Maconomy / People Planner server.
- **Database Name** – Enter the name of the Oracle SID or MS SQL Server database name.
- **Tablespace for Data** – Enter the name of the tablespace if the default is not used.
- **Tablespace for Indices** – Enter the name of the tablespace for indices if the default is not used.
- **Port Number** – Enter the port of Maconomy, typically 1521.
- **User Name** – Enter the name of the Maconomy database user (short name).
- **Password** – Enter the password for accessing the database user.

4. Click **Test** to test the connection. Click **OK**.

5. Select the **DWH** connection and click .

6. Fill in the following fields:

- **Host Name** – Enter the name of the Data warehouse server.
- **Database Name** – Enter the name of the Oracle SID or MS SQL Server database name.
- **Tablespace for Data** – Enter the name of the tablespace if the default is not used.
- **Tablespace for Indices** – Enter the name of the tablespace for indices if the default is not used.
- **Port Number** – Enter the port of Maconomy, typically 1521.
- **User Name** – Enter MACONOMY\_DWH
- **Password** – Enter MACONOMY\_DWH

7. Click **Test** to test the connection. Click **OK**.

8. Click **Close**.

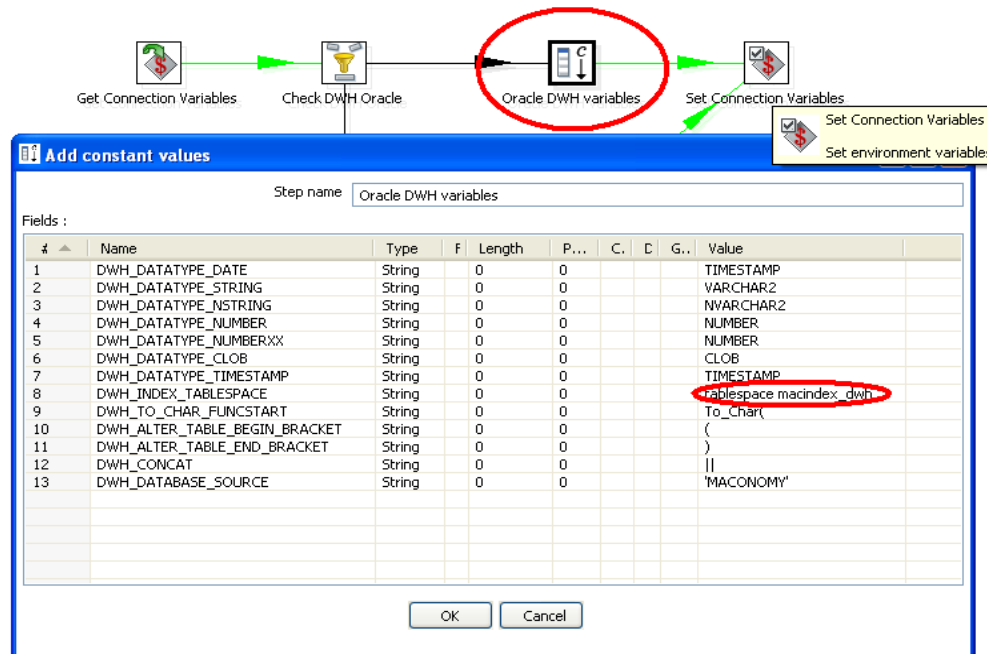
## Set Up the Table Space

For BPM People Planner, set up the right table space.

---

To set up the table space, follow these steps:

1. In this transformation you should edit either do the **Oracle DWH Variables** step or the **Oracle DWH Variables** step (depending upon your DWH connection type) and set the right tablespace for the constant **DWH\_INDEX\_TABLESPACE**:



2. Click **OK** and **Save**.

## Create the Data Warehouse

### Before You Begin

Before you begin this section, note the following:

- Because the **Create** job starts by dropping the full data warehouse, it should **not** be used for upgrading a data warehouse.
- Drop indexes on facts could fail the first time you run this job. If the enhanced reporting views are not in place, the job fails. This may take a long time to finish, depending on the size of the Maconomy database.
- Only run the **Drop** or **DropTablesAndViews** jobs if you really want to remove the full data warehouse completely. Performing a full load does not require running DropTablesAndViews first.

To create the data warehouse, follow these steps:

1. Select **Tools > Repository > Explore**.
2. Double-click the job **Create**.

**Note:** For *BPM People Planner* the jobs are **PP\_CreateTablesAndViews** and **PP\_LoadData**.

## 3. Run this job.

**Note:** For *BPM People Planner* first run **PP\_CreateTablesAndViews** and then **PP\_LoadData**. The **PP\_DropTablesAndViews** removes the People Planner data warehouse.

The above **Create** job drops the full data warehouse (in case one should already exist), then creates tables and views and performs a full load. This could take some time depending on the size of the Maconomy / People Planner database.

The job initiates by dropping the data warehouse. If this is the first time this is done, errors may occur because the job tries to drop something that does not exist. Ignore these errors.

**Note:** To verify, open the command prompt, type **sqlplus maconomy\_dwh/maconomy\_dwh**, and then select **table\_name** from **user\_tables**.

**Note:** The People Planner reports and universe use data from Maconomy data warehouse and therefore cannot be used when Business Performance Management BI for PP is installed in standalone. The universe for standalone mode has not been implemented at the moment.

---

# Data Warehouse Maintenance

Data warehouse maintenance includes:

- Creating ETL jobs
- Scheduling loads
- Processing manual loads

## Top-Level Jobs for Maintaining the Data Warehouse

The following are top-level jobs for maintaining the data warehouse. The first two jobs are for loading data. The third is for upgrading. Once a data warehouse is successfully created, you want to load data regularly, such as once a day or once a week, using Incremental Load. Once a month or so, run Full Load to get any missing dependencies corrected. Run Upgrade when you install service packs or new versions.

Use the following jobs for maintaining the data warehouse once it has been created:

**Full Load** This job resets the fact tables and loads all data in again. Over time the data in incrementally loaded fact tables may become out of sync with some data in their dimension tables for certain scenarios. For example, a record in a dimension table may change without resulting in corresponding fact records to be adjusted.

Therefore, it is recommended to do a full load, for example, once a month.

**Incremental Load** This job loads data that have changed, been inserted or deleted, such as once the data warehouse has been created, new or modified data are retrieved by running this job.

It is recommended to schedule this job to run regularly.

**Upgrade** This job upgrades the data warehouse.

## Scheduling Loads

For periodic updates of the BPM DWH, you must use incremental loads. The Kitchen tool, which is part of Pentaho Data Integration, allows you to launch jobs, such as **Incremental Load**, from the command line.

**Tip:** For more information, see documentation about [Pentaho Data Integrator](#).

The call may be displayed as follows:

```
Kitchen.bat /rep: Pentaho repository /job: "Incremental Load" /dir:/ /user:admin
/pass:admin /level:Basic
```

**Note:** Periodic updates are accomplished by writing a batch script that launches Kitchen and then schedules the launch of the script.

Start a text editor, such as Notepad, paste the following text, and then save it as updateDWH.bat.

```
@echo off

rem remove '-' from the date
for /F tokens=1-4 delims=- %%i in ('date/t') do set filedate=%%i%%j%%k

rem remove ':' from the date
for /F tokens=1-4 delims=: %%i in ('time/t') do set filetime=%%i%%j%%k

rem set the log filename with date and time
set logfilename=C:\Kettle-2[1].3.0\MyLogFiles\Log_%filedate%_%filetime%.log

call Kitchen.bat /rep: Pentaho repository /job: "Incremental Load" /dir:/
/user:admin /pass:admin /level:Basic > %logfilename%

echo Load finished. See the logfile %logfilename%
```

**To schedule loading of data through a Scheduled Task, follow these steps:**

1. Create a folder named **MyLogFiles** in the Kettle folder.
2. Open a command prompt and make the Kettle folder the current directory.
3. To test the script, write **updateDWH.bat**. This may take some time, since the script loads the data warehouse.
4. Open the control panel and then open **Scheduled Tasks**.
5. Click **Add Scheduled Task**, browse to select the script **updateDWH.bat**, and specify how often to perform the task (for example, daily or weekly).
6. Go through the rest of the wizard. You must enter the password of the user for whom the task is scheduled.

## Process Manual Loads

**To process manual updates of data warehouse, follow these steps:**

1. On the repository, start Spoon.
2. Log in as **admin/admin**.
3. Open the **Incremental Load** job.
4. Run the job (**F9**).

**Note:** The tab **Log view** should display **Success** in the result column. If you cannot open the repository, it may be because a firewall is blocking the access. Deactivate the firewall or consult your network administrator.

---

# Install Universes and Documents

Universes and documents are required for all three products: *BPM Reporting*, *BPM Analysis*, and *BPM People Planner*. The universes and documents for each product are contained in individual BIAR files of the RPU.

The following procedure is the same for the BIARs of *BPM Reporting*, *BPM Analysis*, and *BPM People Planner*.

To install universes and documents, you must:

- Import BIAR files
- Set Universe Connection

## Importing BIAR File with Promotion Management

All BPM Analysis universes, reports, and dashboards are enclosed in the BIAR files, which are imported using Promotion Management.

This section shows how Promotion Management can be used to deploy BPM reports on client systems. Promotion Management is a tool that is integrated with the Central Management Console to promote (or move) contents such as reports, universes, and connections to other systems. The source system can be either be another system or a BIAR file. It can be especially useful for structures in which a client uses separate DEV, QA, and Production systems.

**Note:** There is a similar tool for transferring content called Upgrade Management tool, but it is only available on the server, and its main function is for making BIARs created from previous versions usable on BO 4.1. It must be modified to keep it from checking versions; otherwise, it throws a version check failed (UMT 20012) error.

## Features

### Server-to-Server

Promotion Management can be used to transfer contents from one server to another. It is similar to Import Wizard of BO XI 3.1, but it is web-based and integrated with the CMC.

### LCMBIAR-to-Server (and Vice Versa)

Both LCMBIAR and BIAR files can be imported to the CMS repository via Promotion Management, but only an LCMBIAR can be exported from the CMS. You can do this via the command line.

### Overrides

Overrides enable the automatic update of connection when contents are transferred from another server or BIAR.

### Rollback

You can restore a part of or the whole promoted content on the repository to its previous state. Note that this is only applicable if the source is another system and NOT a BIAR.

---

## Scheduling

You can schedule when content will move to another system.

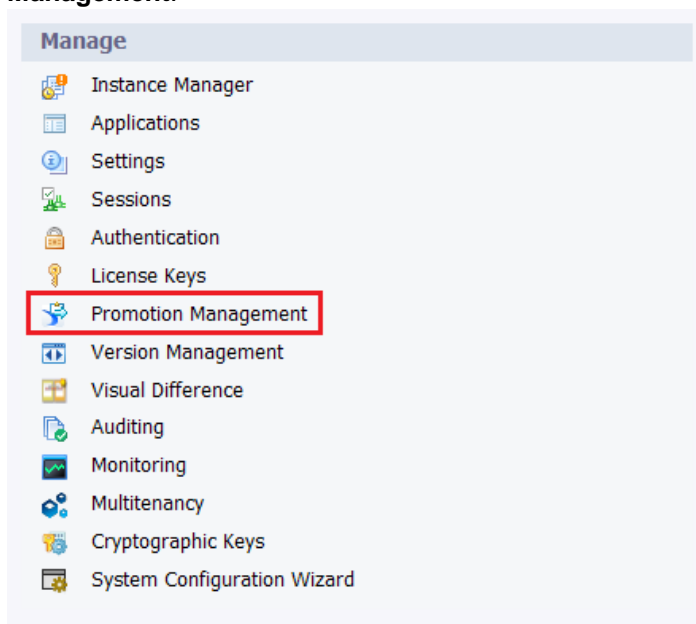
## LCM CLI

This command-line interface can be used to run Promotion Management features without the need to access CMC. This section shows the steps for how to import and export an LCMBIAR using the LCM CLI tool.

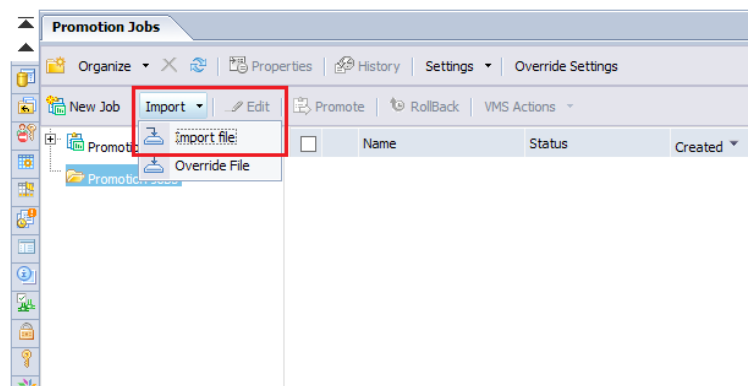
## Implementation

### To do a BIAR-to-server promotion:

1. Log in to the Central Management Console at <https://<server>:<port>/BOE/CMC>.
2. On the CMC homepage, find the Manage island at the right side and click **Promotion Management**.



3. Click the Import drop-down and select **Import file**.  
The Import from file window appears.



4. Select **File System**, then click **Browse**.
5. Select the BIAR or LCMBIAR, then click **Open**.
6. The text beside the “Browse...” button is updated with the location and file name of the BIAR. Click **OK** to create the new job.

**Note:** A password can be set for LCMBIAR. Importing a password-protected LCMBIAR displays another window that allows a user to input the password.

7. A new job with the Source set as “From File” is automatically created. Update the Name and Destination of the new job and click **Create**.

Fields marked with an asterisk (\*) are mandatory fields

Name\*:

Description:

Keywords:

Save Job in\*:

Source :

Destination :

8. All objects from the BIAR are pre-selected, including all dependencies. Click **Promote** to display a new window that contains the Summary, Security Settings, and Test Promote.
  - **Select Security Settings** — Specify whether there are any rights that must be included for the objects to be promoted.
  - **Select Test Promote** — Select this option to check whether there are any errors in the promotion before you click **Promote** again in Step 8 and commit to the changes.
9. Click **Promote** to start the transfer, or **Schedule** to have the promotion run at a later date (or a recurring schedule, depending on the need).

## Setting Universe Connection

After you import the BIAR file, universes and connections are stored in the CMS. To set database connection on the universes, you must create a project and a relational connection, retrieve universe files, assign a connection, and publish the universes.

This is all done in **Information Design Tool**. In **Information Design Tool**, a session to the CMS is required for certain operations. For information about sessions, as well as for more information and guides about creating projects, connections, and handling universe files, see documentation and tutorials on **Information Design Tool**.



**Tip:** See SAP for details about Information Design Tool:

<http://scn.sap.com/docs/DOC-8461>

To set a universe connection, you must:

- Create a project
- Create a relational connection
- Retrieve the universe files
- Set universe connections and publish

## Create a Project

**To create a project (skip this if a project is available already):**

1. Select **File » New » Project**.
2. Enter a name for the project.
3. Select a Project Location.

This is the folder where universe and connection files are stored in the project. By default, a folder under the user's profile is chosen. If other universe developers are to access the files, it is recommended that you select another folder (not under the user profile).

## Create a Relational Connection

**To create a relational connection (skip this if a connection is available already):**

1. Select **File » New » Relational Connection**.
  2. In the Resource Name window, enter a name for the connection. Click **Next**.
  3. In the Database Middleware Driver Selection window, choose a database type.  
BPM supports Oracle and MS SQL Server connections.  
For BPM Reporting, you must choose the database type of the Maconomy database.  
For BPM Analysis and BPM People Planner, you must choose the database type of the BPM Data Warehouse or People Planner Data Warehouse database, respectively.
  4. In the Parameters window, enter the name of the database user, password, reference to TNS, service/database, port number, and SID/database. The parameters required depend on whether an Oracle or MS SQL Server connection is chosen, as well as whether a Client, ODBC, or JDBC connection is selected. Click **Next**.
  5. Choose default settings for the next Parameters screen.
  6. To speed up query performance, set up an ALL-ROWS hint and enable Cursor Sharing.
-

**Note: Enabling Cursor Sharing**

On many installations, performance can be improved by applying Cursor Sharing. However, on some systems, enabling this can have the opposite effect and reduce performance.

Applying Cursor Sharing relies on the current performance of the user's system. If the system currently has performance issues while Cursor Sharing is disabled, enable it to help improve performance. If the system has performance issues while Cursor Sharing enabled, disabling this may improve performance.

- a. To set up an ALL\_ROWS hint, enter the following value for the custom property Hint:  
  
`/*+ ALL_ROWS */`
  - b. To set up cursor sharing on Oracle connections, enter the following value for the custom property ConnectInit:  
  
`ALTER SESSION SET CURSOR_SHARING = FORCE`
  - c. To set up cursor sharing on MS SQL Server connections, enter the following value for the custom property ConnectInit:  
  
`FORCE PARAMETERIZATION`
7. Click **Finish**. A new connection file (type cnx) is added to the project.  
  
A cnx connection is a local connection and can be used for publishing universes locally on disk. However, it is recommended that you publish universes on the CMS. This requires a secure connection.
  8. To create a secure connection of the new connection file, right-click the cnx file and choose Publish Connection to a Repository.
  9. In the window that appears, browse for the CMS location in which the connection is to be stored. For example, select the default Connections folder of the CMS. Click **Finish**.
  10. A question window appears. Click **Yes** to retrieve a shortcut file to the secure connection. A secure connection file (type cns) is added to the project.
-

**Note:**

**ALL\_ROWS Information**

By default, the Maconomy database is set to retrieve a small number of records at a time for each query. This is convenient when entering and working in Maconomy workspaces or dialogs where you typically only see 10, 50, or 100 records at a time. However, when reporting, it is beneficial to retrieve all records at once, because a report document or dashboard is not refreshed until all records are retrieved.

**Cursor Sharing Information**

Often the reports that are run have the same query outline. Oracle and SQL Server can use this by saving a template of the queries that are executed. In many cases, this means that even if restrictions are changed (and the queries thereby differ), the database can skip the analysis of how to execute the queries, such as the creation of the explain plan. For many reports, the creation of the explain plan takes most of the time, so there is significant value in being able to reuse query templates.

## Retrieve the Universe Files

To retrieve the universe files, follow these steps:


1. Make sure the project is selected in the Local Projects view.
2. Select **File » Retrieve a Published Universe » From a Repository...**
3. In the window that appears, browse to the location of the universes.  
If the universe is an old BO 3.1 universe, it has no extension; otherwise, it has a **unx** extension. Retrieving a universe of type **unv** migrates the universe to the new BI 4 **unx** format. If a BO 3.1 universe should be kept in the BO 3.1 **unv** format, set connection with the Universe Designer tool instead.
4. Select **Save for All Users**. Click **OK**.  
The Universe files (**blx** and **dfx**) are retrieved to a **timestamp** named folder under the project folder selected.

**Note:** If needed, the universe files can be moved to another folder (for example, out of the **timestamp** named folder). However, this may break the local dependency that the **blx** file has to the **dfx** file and the local dependency that the **dfx** file has to the **cnx/cns** file. If this happens, open the **dfx** file and choose the connection again and possibly make some other minor change to force Information Design Tool to mark the **dfx** file as changed. Then save the file. Then open the **blx** file and choose **Change Data Foundation**. Here select the **dfx** file and possibly make some other small change to force Information Design Tool to mark the **blx** file as changed. Then save the file.

## Set Universe Connections and Publish

To set universe connections and publish, follow these steps:

1. Open the **dfx** file of a universe.
  2. Click the **Connections** tab.
-

3. Click **Change Connection...** .
4. Select the connection file (for example, the newly created **cns** connection shortcut file). Click **Finish**.
5. Save the **dfx** file.
6. Right-click the **blx** file and choose **Publish » To a Repository**.
7. Optionally, mark areas for checking integrity. Click **Next**.
8. Browse to the CMS folder in which the universe is to be published. Click **Finish**.  
The universe has now been published with the selected database connection.
9. Continue this process for all universes needed.

## Set Up BPM Reporting Images

To set up BPM Reporting Images, you must copy the files from the images folder of the Reporting Packing Unit (RPU) and paste them in the destination folder for graphical images in SAP BusinessObjects.

**To copy and paste the image:**

1. Go to images folder of the Reporting Packing Unit (RPU) and copy the image files.
2. Go to the destination folder for graphical images in SAP BusinessObjects, and paste the image files in this folder.

For example:

C:\Program Files (x86)\SAP BusinessObjects\SAP BusinessObjects Enterprise XI 4.0\images

---

## Set Up BPM Reporting Dashboard Components

This setup is required for BPM Reporting Dashboard Components only.

BPM Dashboard Components allows you to view different dashboard components in a window tab.

To properly view the Company Performance, Customer Performance, and Job Performance workspaces in the Workspace Client, copy the **BPMDashboards.war** file from the download server to the local machine.

**To copy and prepare the Dashboard Component iFrames, follow these steps:**

1. Copy the **BPMDashboards.war** file from the download server and place in an appropriate location on the local machine.
2. Navigate to `C:\Business Objects\Tomcat7\conf` and update **tomcat-users.xml**
3. Insert the following lines between the above `</tomcat-users>` end tag. This creates the user **admin** that has the role for **manager-gui**:
  - a. `<role rolename="manager-gui"/>`
  - b. `<user username="admin" password="admin" roles="manage-gui"/>`
4. Navigate to the <http://<servername>:8080/> Tomcat interface.
5. Click on the **manager webapp** link and use the credentials that you created for **admin**.
6. In the **Deploy directory or WAR file located on the server** section, deploy the **BPMDashboards.war** and complete the following:
  - Context Path (required) — (Starts with a backslash (/) and is concatenated with the war file name, for example, /BPMDashboards).
  - WAR or Directory URL — (Complete URL of the WAR file to be deployed, including the name of the war file, for example, C:\temp\BPMDashboards.war).
7. Click **Deploy**.
8. Once the webapp is deployed, check whether the web app is started. If not, start the web app.

# Upgrade

## Workflow

This process of upgrading is divided into three main steps, described in the following.



## Upgrade ETL

Upgrading the ETL is required for upgrading *BPM Analysis* and *BPM People Planner*.

To upgrade the ETL you must:

- Upgrade the ETL and BPM Data Warehouse
- Upgrade the ETL and People Planner Data Warehouse

## Before You Begin

Before upgrading, it is recommended that you make a [backup of the ETL](#) and a backup of the data warehouse database.

**Note:** Since there are many methods to back up a data warehouse database, and methods differ for Oracle and MS SQL, consult your Database Administrators for this task.

## Upgrade the ETL and BPM Data Warehouse

To upgrade the ETL and BPM Data Warehouse, follow these steps:

1. Install the ETL of the new RPU.
  2. Run the ETL job **Upgrade**.
-

The Upgrade job truncates the fact tables, upgrades the database schema of the data warehouse, and performs a full load. Dimension tables remain unchanged and keep the history of dimensions.

## Back Up the ETL

To back up the ETL, follow these steps:

1. Run **Spoon.bat**.
2. Select **Tools » Repository » Connect...**
3. In the **Repository Connection** window, select the repository that contains the ETL to back up.
4. Select **Tools » Repository » Export Repository...**
5. Choose a location and a file name for the XML file to be created.
6. Click **Save**.

## Upgrade the ETL and People Planner Data Warehouse

To upgrade the ETL and People Planner Data Warehouse, install the ETL of the new RPU.

---



## Upgrade Universes and Documents

Upgrading universes and documents is required for upgrading *BPM Reporting*, *BPM Analysis*, and *BPM People Planner*.

Upgrading is done by installing the respective BIARs from the new RPU. Before installing, make a backup of the CMS, for example, a shape of a BIAR export using Promotion Management.

---

## Upgrade Customizations

Customizations are the responsibilities of the consultant who applies them. There is no automatic resolving mechanism that safely upgrades BPM without the risk of overwriting customizations or that automatically makes customized BPM components adjust to upgraded BPM components.

However, there are several precautions that you can take when customizing BPM that help to protect the customizations from being overwritten when upgrading.

The following outline the procedures for upgrading customizations, which include:

- Upgrading custom ETL
- Upgrading custom universes
- Upgrading Custom Documents on Standard Universes
- Upgrading Custom Documents on Custom Universes

### Upgrading Custom ETL

Customized ETL is typically create as separate ETL pieces—that is, separate jobs and tasks that are called from the standard ETL. When a new standard ETL is installed, any modifications to it are overwritten, including the places that called the custom ETL. This *link* to the custom ETL then must be reestablished. The custom ETL itself should have facilities for upgrading to new database schemas of tables, and so on.

### Upgrading Custom Universes

Customized universes are typically created in one of two ways:

- **Copied** — A copy of a standard universe. In this case, upgrading is not needed except for running refresh structure on the custom universe to update it to fit the present Maconomy database.
- **Linked** — A universe linking to a standard universe. In this case, there should be no need for doing modifications to the custom universe.

There are exceptions, namely if deprecated elements have been removed from the standard universe or that universe has undergone substantial changes, as happens on occasion.

Also, the custom universe may have introduced tables, objects, and so on, which are also introduced in the new standard universe. Therefore, it is always a good idea to inspect the link from the custom universe to the standard universe and make sure it is intact.

---

## **Upgrade Custom Documents on Standard Universes**

Custom documents running on standard universes typically work without any changes.

If the principles for customization have been followed, installing a new standard package does not overwrite custom documents.

However, as standard universes from time to time may undergo some changes or fixes, or because deprecated elements may be removed from universes, it is always recommended to test run custom documents and inspect for any issues.

## **Upgrade Custom Documents on Custom Universes**

If customizations have been performed following the recommended principles, upgrading to a new BPM standard package should not ruin any custom documents or custom universes.

It is always a good idea to inspect custom documents, and especially universes, to ensure that they are still functioning correctly after an upgrade; the Maconomy database could have been changed and made custom universe elements invalid or require a refresh of the structure.

# Statutory

## Overview

Maconomy's Statutory offering supports regulatory requirements in various countries, and includes reporting, an audit of compliance analysis for specific countries, and where applicable, setup requirements to facilitate an interface with a country's tax authority website.

Maconomy provides specific statutory-related functionality relevant within select countries, including tax settlement, foreign transactions, and related reports. Additionally, Maconomy's robust and sophisticated extensibility provides extensive capabilities to tailor the solution to specific localized needs.

Benefits of implementing statutory reporting include: targeted statutory-related reporting; easy interface between Maconomy system and a country's tax authority, where applicable; and one more benefit?

**To use Maconomy Statutory, you must perform:**

- [SPU Installation](#)
- [Setup by Country](#)

## Compliance

Deltak maintains a foundational ISAE 3000 audit conducted by BDO as a baseline representation of Maconomy's ability to satisfy global statutory requirements. This audit includes standard financial reports, financial statements, trial balances, and statements of cash flows in a GAAP/IFRS format.

Regulatory documents for specific countries detail that country's requirement with an analysis of Maconomy's compliance, as determined by BDO.

For details on compliance and Regulatory documents by country, Consultants can get the latest information at:

<https://www.kona.com/#!/projects/65917>

Go to **Conversations > Statutory Compliance > [Country]** and click the Attachment (bottom) tab.

## Reporting Documents

See the BPM Description Guide for details on specific reports, as well as workflow information.

---

## SPU Installation

SPU Installation is required to install the statutory and BPM report support in Maconomy.

### Prerequisites

The following application versions are required for the installation:

- Maconomy 2.4.x
- Oracle 12.1/Microsoft SQL Server 2012
- MConfig 3.15
- Extender 1.7.3

**Note:** Before you begin, put Background Tasks in Maintenance Mode.

### Installation

#### To install the SPU:

1. Transfer the SPU and translations files to the PUs folder on the Maconomy Application server.
2. Run MConfig (as Administrator/Elevated).
3. Open the Maconomy Application instance and select the appropriate SPU, and click OK.
4. Start the installation.
5. Open the Maconomy Application instance, double-click on the shortname and select Load shortname data IA.LegalSolution Data (import only). Click OK.
6. Open OSGi Products and select Install Java extensions IA.LegalSolution for each Coupling Services for the environment. Click OK.
7. Complete the installation.
8. Enter the Maconomy Administrator password when prompted.

**Note:** After the installation is complete, remember to disable Maintenance Mode in Background Tasks.

---

## Setup by Country

### Belgium

#### Tax Declaration Report

Define tax declaration fields for the **Tax Declaration** report that lists financially posted amounts and their tax amounts, for a specific company and fiscal year. Maconomy automatically creates tax report records when posting amounts and each record has a field that states which tax declaration box to place the tax amount in the tax declaration.

#### Setup in Maconomy

To enable this feature:

1. Go to **System Setup » System Information » Finance**.
2. Select the **Extended Tax Reporting** parameter check box.
3. Go to **General Ledger » Tax » Tax Report Fields** and create the tax declaration fields.
4. Go to **General Ledger » Tax » Tax Report Specification** and specify the amounts that should go into the fields.
5. Perform postings as usual.

**Note:** If you need to reference the XML schema for the report, refer to *the Deltek BPM Description Guide*.

#### Setup in Tax Authority

Not applicable for this report.

### France

No setup is required.

### Norway

#### Norwegian SAFT Report

The use of Maconomy's Tax Settlement functionality must be in place for the Tax Information details to populate in the report, as required by Norwegian SKAT.

- The mapping fields below need to be filled in the appropriate dialogs, as provided. For example, the <Company> attribute means that the Company Information card has certain fields that must be completed, such as Company Registration No.
- Header information is populated via selection criterion or other means. You do not need to do anything for this area.
- Most of the fields should already be filled in the system. To confirm this, double-check each line to ensure that the fields are populated and the correct data is extracted in the report.

#### Reference Materials

---

**Note:** SKAT updates these documents periodically. Make sure you have downloaded the most recent versions.

<http://www.skatteetaten.no/no/Bedrift-og-organisasjon/frister-attester-og-regnskap/Bokforing-og-regnskap/standardformat-regnskap-saf-t/dokumentasjon/>

- Norwegian SAF-T Financial data – Documentation (this section)
- Norwegian SAF-T Financial data – Technical description (XML elements)
- Diagrams (picture files) of the XSD Schema
- Norwegian SAF-T Standard VAT codes

The export is based on the XML Schema – ([www.github.com/skatteetaten/saf-t](http://www.github.com/skatteetaten/saf-t))

**Note:** This version of the SAF-T data export is limited to the general ledger level, including customer and supplier transactions. Necessary master data is also included.

Tags (attributes indented)	Mapping
<?xml version="1.0" encoding="UTF-8" standalone="yes"?>	
<AuditFile xmlns="urn:StandardAuditFile-Taxation-Financial:NO">	
<Header>	
<AuditFileVersion>	Hardcoded to '1'
<AuditFileCountry>	Company Contact Information \ [Country ISO]
<AuditFileDateCreated>	Current Date upon running the report
<SoftwareCompanyName>	Hardcoded to 'Deltek, Inc.'
<SoftwareID>	Hardcoded to 'Deltek Maconomy'
<SoftwareVersion>	[Current Main Version No.] + [Current Patch No.]
<Company>	
<RegistrationNumber>	Company Contact Information \ [Company Registration No.]
<Name>	Company Contact Information \ [Name 1]
<Address>	
<StreetName>	Company Contact Information \ [Name 2] + Company Contact Information \ [Name 3] + Company Contact Information \ [Name 4] + Company Contact Information \ [Name 5]
<Number>	Company Contact Information \ [Name 2]
<City>	Company Contact Information \ [Postal District]
<PostalCode>	Company Contact Information \ [Zip Code]
<Region>	Company Contact Information \ [Name 3]

Tags (attributes indented)	Mapping
<Country>	Company Contact Information \ [Country ISO]
</Address>	
<Contact>	
<ContactPerson>	
<FirstName>	Hardcoded to 'NotUsed'
<LastName>	Company Contact Information \ [Employee Name 1] up to [Employee Name 5]
</ContactPerson>	
<Telephone>	Company Contact Information \ [Telephone]
<Fax>	Company Contact Information \ [Telefax]
<Email>	Company Contact Information \ [Text 10]
</Contact>	
<TaxRegistration>	
<TaxRegistrationNumber>	Company Contact Information \ [Company Registration No.] + "MVA"
<TaxAuthority>	Hardcoded to 'Skatteetaten'
<TaxVerificationDate>	Company Contact Information \ [Date 1]
</TaxRegistration>	
<BankAccount>	
<IBANNumber>	Company Contact Information \ [Giro]
<BankAccountNumber>	Company Contact Information \ [Bank]
<CurrencyCode>	Company Contact Information \ [Currency]
</BankAccount>	
</Company>	
<DefaultCurrencyCode>	Company Contact Information \ [Currency]
<SelectionCriteria>	
<CompanyEntity>	User Input. Company No.
<SelectionStartDate>	User Input. Date From
<SelectionEndDate>	User Input. Date To

---



Tags (attributes indented)	Mapping
</SelectionCriteria>	
<HeaderComment>	User Input. Header Comment
<TaxAccountingBasis>	Hardcoded to 'A'
<TaxEntity>	Company Contact Information \ [Text 9]
<UserID>	Employee name derived from the logged in user.
</Header>	
<MasterFiles>	
<GeneralLedgerAccounts>	
<Account>	
<AccountID>	Account \ [Account No.]
<AccountDescription>	Account \ [Account Name]
<StandardAccountID>	Accoun Grouping \ [Grouping Level 1]
<GroupingCategory>	Accoun Grouping \ [Grouping Level 1]
<GroupingCode>	Accoun Grouping \ [Grouping Level 1]
<AccountType>	Hardcoded to 'GL'
<AccountCreationDate>	Account \ [Date Created]
<OpeningDebitBalance>	Opening/Closing Balances \ [Opening Balance]
<OpeningCreditBalance>	Opening/Closing Balances \ [Opening Balance]
<ClosingDebitBalance>	Opening/Closing Balances \ [Closing Balance]
<ClosingCreditBalance>	Opening/Closing Balances \ [Closing Balance]
</Account>	
</GeneralLedgerAccounts>	
<Customers>	
<Customer>	
<RegistrationNumber>	General Information \ [Company Registration No.]
<Name>	Company Customer \ [Customer Name]
<Address>	

Tags (attributes indented)	Mapping
<StreetName>	Company Customer \ Contact Information \ [Name 2] + Company Customer \ Contact Information \ [Name 3] + Company Customer \ Contact Information \ [Name 4] + Company Customer \ Contact Information \ [Name 5]
<Number>	Company Customer \ Contact Information \ [Name 2] + Company Customer \ Contact Information \ [Name 3] + Company Customer \ Contact Information \ [Name 4] + Company Customer \ Contact Information \ [Name 5]
<City>	Company Customer \ Contact Information \ [Name 4] + Company Customer \ Contact Information \ [Name 5]
<PostalCode>	Company Customer \ Contact Information \ [Zip Code]
<Region>	Company Customer \ Contact Information \ [Postal District]
<Country>	Company Customer \ Contact Information \ [Country ISO]
</Address>	
<Contact>	
<ContactPerson>	
<FirstName>	Hardcoded to 'NotUsed'
<LastName>	Company Customer \ [Contact Person]
</ContactPerson>	
<Telephone>	Company Customer \ Contact Information \ [Telephone]
<Fax>	Company Customer \ Contact Information \ [Telefax]
<Email>	Company Customer \ Contact Information \ [E-mail]
</Contact>	
<TaxRegistration>	
<TaxRegistrationNumber>	Company Customer \ Contact Information \ [Tax No.] + "MVA"
<TaxAuthority>	Skatteetaten
</TaxRegistration>	
<BankAccount>	
<IBANNumber>	Company Customer \ Contact Information \ [Giro]
<BankAccountNumber>	Company Customer \ General Information \ [Bank Account]
<BIC>	Company Customer \ Contact Information \ [SWIFT Code]

Tags (attributes indented)	Mapping
<CurrencyCode>	Company Customer \ Contact Information \ [Currency]
</BankAccount>	
<CustomerID>	Company Customer \ [Customer No.]
<AccountID>	Company Customer \ General Information \ [Control Account]
<OpeningDebitBalance>	Balance \ [Balance - Company] -> filtered by Date From
<OpeningCreditBalance>	Balance \ [Balance - Company] -> filtered by Date From
<ClosingDebitBalance>	Balance \ [Balance - Company] -> filtered by Date To
<ClosingCreditBalance>	Balance \ [Balance - Company] -> filtered by Date To
<PartyInfo>	
<PaymentTerms>	
<Days>	(Company Customer \ Payment Terms \ [Payment Terms Months] * 30) + Company Customer \ Payment Terms \ [Payment Terms Days]
<CashDiscountDays>	Company Customer \ Cash Discount \ [Cash Discount Days]
<CashDiscountRate>	Company Customer \ Cash Discount \ [Discount %]
</PaymentTerms>	
<CurrencyCode>	Company Customer \ Contact Information \ [Currency]
</PartyInfo>	
</Customer>	
</Customers>	
<Suppliers>	
<Supplier>	
<RegistrationNumber>	Vendor General Information \ [Company Registration No.]
<Name>	Company Vendor \ [Vendor Name]
<Address>	
<StreetName>	Company Vendor \ Vendor Contact Information \ [Name 2]
<Number>	Company Vendor \ Vendor Contact Information \ [Name 4] + Company Vendor \ Vendor Contact Information \ [Name 5]

Tags (attributes indented)	Mapping
<City>	Company Vendor \ Vendor Contact Information \ [Name 4] + Company Vendor \ Vendor Contact Information \ [Name 5]
<PostalCode>	Company Vendor \ Vendor Contact Information \ [Zip Code]
<Country>	Company Vendor \ Vendor Contact Information \ [Country ISO]
</Address>	
<Contact>	
<ContactPerson>	
<FirstName>	Hardcoded to 'NotUsed'
<LastName>	Company Vendor \ Vendor Contact Information \ [Attention]
</ContactPerson>	
<Telephone>	Company Vendor \ Vendor Contact Information \ [Telephone]
<Fax>	Company Vendor \ Vendor Contact Information \ [Telefax]
<Email>	Company Vendor \ Vendor Contact Information \ [E-mail]
</Contact>	
<TaxRegistration>	
<TaxRegistrationNumber>	Company Vendor \ Vendor Contact Information \ [Tax No.] + "MVA"
<TaxAuthority>	Hardcoded 'Skatteetaten'
</TaxRegistration>	
<BankAccount>	
<IBANNumber>	Company Vendor \ Vendor Contact Information \ [Giro]
<BankAccountNumber>	Company Vendor \ Vendor General Information \ [Bank Account]
<BIC>	Company Vendor \ Vendor Contact Information \ [SWIFT Code]
<CurrencyCode>	Company Vendor \ Vendor Contact Information \ [Currency]
<GeneralLedgerAccountID>	Company Vendor \ Vendor Contact Information \ [Control Account]
</BankAccount>	
<SupplierID>	Company Vendor \ [Vendor No.]
<OpeningDebitBalance>	Balance \ [Balance - Company] -> filtered by Date From
<OpeningCreditBalance>	Balance \ [Balance - Company] -> filtered by Date From

Tags (attributes indented)	Mapping						
<ClosingDebitBalance>	Balance \ [Balance - Company] -> filtered by Date To						
<ClosingCreditBalance>	Balance \ [Balance - Company] -> filtered by Date To						
<PartyInfo>							
<PaymentTerms>							
<Days>	(Company Vendor \ Payment Terms \ [Payment Terms Months] * 30) + Company Vendor \ Payment Terms \ [Payment Terms Days]						
<CashDiscountDays>	Company Vendor \ Cash Discount \ [Cash Discount Days]						
<CashDiscountRate>	Company Vendor \ Cash Discount \ [Discount %]						
</PaymentTerms>							
<CurrencyCode>	Company Vendor \ Vendor Contact Information \ [Currency]						
</PartyInfo>							
</Supplier>							
</Suppliers>							
<TaxTable>							
<TaxTableEntry>							
<TaxType>	Hardcoded to 'MVA'						
<Description>	Hardcoded to 'Merverdiavgift'						
<TaxCodeDetails>							
<TaxCode>	Tax Code \ [Tax Code Name]						
<EffectiveDate>	Tax Table \ [From Period]						
<ExpirationDate>	Tax Table \ [To Period]						
<Description>	Tax Code \ [Tax Type]						
<TaxPercentage>	Tax Code [Tax Rate %]						
<Country>	Tax Table \ [Country ISO]						
<StandardTaxCode>	Value based on Tax Rate: <table> <tr> <th>Tax Rate</th><th>Standard Tax Code</th></tr> <tr> <td>25%</td><td>1</td></tr> <tr> <td>15%</td><td>11</td></tr> </table>	Tax Rate	Standard Tax Code	25%	1	15%	11
Tax Rate	Standard Tax Code						
25%	1						
15%	11						

Tags (attributes indented)	Mapping
	<div>Anything else</div> <div>NA</div>
<BaseRate>	Tax Code \ [Deduction %]
</TaxCodeDetails>	
</TaxTableEntry>	
</TaxTable>	
<AnalysisTypeTable>	
<AnalysisTypeTableEntry>	
<AnalysisType>	Hardcoded to 'PE'
<AnalysisTypeDescription>	Hardcoded to 'Prosjekt/Ansatt'
<AnalysisID>	Job \ [Job Name]
<AnalysisIDDescription>	Job \ [Job No.]
<StartDate>	Job \ [Created Date]
<EndDate>	Job \ [Acutal Ending Date]
<Analysis>	
<AnalysisType>	Hardcoded to 'PE'
<AnalysisID>	Hardcoded to 'PE'
</Analysis>	
</AnalysisTypeTableEntry>	
</AnalysisTypeTable>	
</MasterFiles>	
<GeneralLedgerEntries>	
<NumberOfEntries>	Count of number of transactions ( <b>Note:</b> not entries)
<TotalDebit>	Total Sum of the (Actuals - Company \ [Debit - Company])
<TotalCredit>	Total Sum of the (Actuals - Company \ [Credit - Company])
<Journal>	
<JournalID>	Hardcoded to 'A'
<Description>	Actuals \ [Journal Type]

Tags (attributes indented)	Mapping
<Type>	Hardcoded to 'A'
<Transaction>	
<TransactionID>	Actuals \ [Transaction No.]
<Period>	Fiscal Period \ [Period]
<PeriodYear>	Fiscal Period \ [Fiscal Year]
<TransactionDate>	Actuals \ [Journal Date]
<SourceID>	Actuals \ [Journal Creator]
<TransactionType>	Actuals \ [Transaction Type]
<Description>	Actuals \ [Entry Text]
<BatchID>	Actuals \ [Journal No.]
<SystemEntryDate>	Actuals \ [Journal Date]
<GLPostingDate>	Posting Date \ [Posting Date]
<CustomerID>	Customer \ [Customer No.]
<SupplierID>	Vendor \ [Vendor No.]
<SystemID>	Auto-generated sequence number per Journal
<Line>	
<RecordID>	Auto-generated sequence number per Line
<AccountID>	Account \ [Account No.]
<Analysis>	
<AnalysisType>	"P" for jobs and "E" for employees
<AnalysisID>	[Job No.] or [Employee No.]. Both can exist as separate <Analysis> at the same time.
<AnalysisAmount>	
<Amount>	Actuals \ Actuals - Company \ [Balance]
<CurrencyCode>	Currency \ [Original Currency]
<CurrencyAmount>	Actuals \ [Amount - Original]
<ExchangeRate>	Value of <Amount> divided by <CurrencyAmount>. Hidden if zero.
</AnalysisAmount>	

Tags (attributes indented)	Mapping
</Analysis>	
<SourceDocumentID>	Actuals \ [Journal No.]
<CustomerID>	Customer \ [Customer No.]
<SupplierID>	Vendor \ [Vendor No.]
<Description>	Actuals \ [Entry Text]
<DebitAmount>	<b>Note:</b> <DebitAmount> if balance is positive <CreditAmount> if blance is negative
<Amount>	Actuals \ Actuals - Company \ [Balance]
<CurrencyCode>	Currency \ [Original Currency]
<CurrencyAmount>	Actuals \ [Amount - Original]
</DebitAmount>	
<TaxInformation>	
<TaxType>	Tax Code \ [Tax Type]
<TaxCode>	Tax Code \ [Tax Code Name]
<TaxPercentage>	Tax Code \ [Tax Rate %]
<TaxBase>	Settlement \ Basis Amounts \ Tax Basis \ [Tax Basis - Company]
<TaxAmount>	
<Amount>	Settlement \ Tax Amounts \ [Tax - Company]
<CurrencyCode>	Currency \ [Original Currency]
<CurrencyAmount>	Settlement \ Tax Amounts \ [Tax - Original]
</TaxAmount>	
</TaxInformation>	
<ReferenceNumber>	Settlement \ [Transaction No.]
<SystemEntryTime>	Dates \ [Entry Date]
</Line>	
</Transaction>	
</Journal>	



## Enable Logging

To enable logging, add the following entries to logback.xml of the coupling service configuration:

```
<logger name="com.deltek.maconomy.bpm.norway.nsft"
additivity="false">
  <level value="DEBUG" />
  <appender-ref ref="FILE"/>
</logger>

<logger name="com.deltek.maconomy.bpm.util" additivity="false">
  <level value="DEBUG"/>
  <appender-ref ref="FILE"/>
</logger>
```

## Setup in Maconomy

To enable this report:

1. Go to **System Setup » Parameters and Numbers » System Parameters**.
2. Double-click the **BPM Server REST API** parameter.
3. On the System Parameter sub-tab, enter the IP and not DOMAIN address.
4. On the System Parameters tab, select the **BPM Server URL** parameter.
5. On the System Parameter sub-tab, enter the BPM server URL.

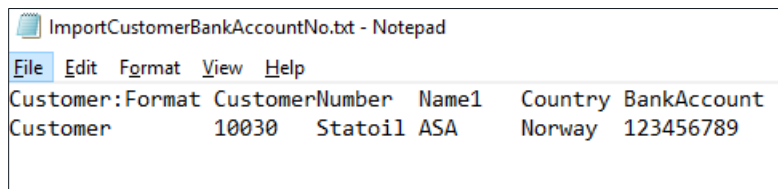
## Import Bank Account Numbers for Customers

Bank Account No. is an optional field from Maconomy that you can leave empty for the Norwegian SAFT report. This field is not visible in the standard layout in the Customers workspace. To use the Bank Account No field, you must create an import file to fill the field with bank account numbers.

**Note:** The import file is only applicable in the Customers workspace.

To add bank account numbers:

1. Create a tab-separated data file with customer information, as shown.



ImportCustomerBankAccountNo.txt - Notepad

Customer:Format	CustomerNumber	Name1	Country	BankAccount
Customer	10030	Statoil ASA	Norway	123456789

2. In Maconomy, go to **Single Dialog > Import > Customer > Import Customers**.
3. On the Import Customers tab, select the **Internal Names**, **Progress Bar**, and **Logging** check boxes.
4. Click **Import**.
5. Select the import file.
6. In the Customers workspace, right-click in the customer table and select **Customize Columns**.
7. Select the **Bank Acct. No.** column. The values you imported into the Bank Acct. No. column are displayed.

### Import SWIFT Code for Customers and Vendors

SWIFT Code is not a visible field in the standard layout in the Customers and Vendors workspaces. You must use an import file to fill this field with bank account numbers.

To add bank account numbers:

1. Create a tab-separated data file with SWIFT code information, as shown.

1	Customer:Format	CustomerNumber	Name1	Country	SWIFTCode
2	Customer	4470377113	Nice Homes Ltd.	United Kingdom	192020393
3					

2. Open the Customers or Vendors workspace:
  - a. Go to **Single Dialog > Import > Customer > Import Customers** to import the SWIFT code values into the Customers workspace.
  - b. Go to go to **Single Dialog > Import > Vendor > Import Vendors** to import SWIFT code into the Vendors workspace.
3. Select the **Internal Names**, **Progress Bar**, and **Logging** check boxes.
4. Click **Import**.
5. Select your import file.
6. Customize the layout to display the SWIFT column and values in the Customers and Vendors workspaces.

### Setup in Tax Authority

No setup is required.

## Spain

### Include Tax for Debtor Provisions System Parameter

Set up the inclusion of tax in debt provisions for new customer entries or to update existing open customer entries. Enable this company-specific parameter to select whether tax should be included or excluded for debtor provisions.

Enter or select a date to update existing open customer entries without approved or posted debtor provisions to include tax. If you do not choose a date, all open customer entries without approved or posted debtor provisions are updated to include tax.

**Note:** Customer entries that already have approved debtor provisions are not affected by this parameter.

## Sweden

The Finance universe of BPM Reporting use reporting structures to structure and filter accounts. Sweden BPM reports require the setup of reporting structures. Refer to the *Reporting Structure for Finance Measures* section in the BPM Functional Setup Guide for more information.

---

## United Kingdom

### Making Tax Digital (MTD) Tax Submission Report

As of April 1, 2019, the UK HM Revenue and Customs (HMRC) tax authorities implemented the Making Tax Digital (MTD) process to use for various tax-related information, including submission of VAT returns.

#### Setup in Maconomy

##### Notes:

**Workspace Not Default** — The UK Tax Submissions workspace is not added to the Menu as default. Add the workspace per usual procedures, or engage Services as needed.

**Tax Settlement Setting** — The default setting for the UK MTD functionality is to use the Tax Settlement functionality in Maconomy.

- If your organization does not use Tax Settlement functionality, you must turn this requirement off in the server.ini file.
- If you are a **Maconomy Enterprise Cloud Customer** you must raise a Support Case requesting the Deltek Cloud team to change this setting.

To enable this feature:

1. In Maconomy, go to **System Setup » Parameters and Numbers » System Parameters**.
2. Double-click the **BPM Server REST API URL** parameter.
3. On the System Parameter sub-tab, enter the URL to the server in the **BPM Server REST API URL** field.
4. VAT data is calculated using tax settlements, by default. If you need to calculate VAT data using entry dates:
  - a. Double-click the **Use Entry Dates for UK Tax Submission (Making Tax Digital)** parameter.
  - b. On the System Parameter sub-tab, select the **Use Entry Dates for UK Tax Submission (Making Tax Digital)** check box.
5. Go to **Single Dialogs » Set-Up » Access Control » Groups** to set up or confirm access to the VAT Submissions and VAT Submission Entries windows.
6. Using the normal Extender process, add the following line in the location you want the workspace to display in the GlobalMenu:

```
<Workspace title="UK Tax Submissions"
source="uktaxsubmission:UKTaxSubmissionVatSubmissions" />
```

7. Using the normal Extender process, add the following binding to the **couplingconfiguration.mcsl.xml** file if a customized couplingconfiguration exists:

```
<Binding namespace="mtd">
  <Fields>
    <Field name="HmrcUrl" value="urlRef('mtdhmrcurl') defaultTo
''' />
```

```

        <Field name="ClientId" value="urlRef('mtdclientid') defaultTo
    "" />

    </Fields>

</Binding>

```

8. To enable logging, add the following statement to the logback.xml file (<Path to Maconomy installation>\CouplingService\configuration\logback.xml):

```

<logger name="com.deltek.maconomy.bpm.uktaxsubmission"
    additivity="false">

    <level value="TRACE" />

    <appender-ref ref="STDOUT" />

</logger>

```

9. Add the following parameters to the Server.ini file (<Path to Maconomy installation>\CouplingService\server.ini):

```

url.mtdhmrcurl = <URL for MTD API>

url.mtdservertoken = <Maconomy server token>

url.mtdclientid = <Maconomy client ID>

url.mtdclientsecret = <Maconomy client secret>

```

**Note:** Contact PDM for these codes via the Deltek Customer Care/Services teams.

## SSI Setup

Aside from the SSI Setup mentioned in the System Admin Guide, there are some additional steps needed for Trusted Authentication in REST API to be allowed in running the statutory reports.

To configure Trusted Authentication for statutory reports:

1. On the BO server, log in to the Central Management Console (CMC) with administrative rights.
  2. Go to **Servers** area of the CMC Client and open the properties for Web Application Server.
  3. In the **Command Line Parameters** textbox, look for the parameter - *Dbobj.trustedauth.home* and note down its corresponding value. (i.e. "- *Dbobj.trustedauth.home=C:/Program Files (x86)/SAP BusinessObjects/SAP BusinessObjects Enterprise XI 4.0/java/pjs/container/bin*")
  4. Go to the **Authentication Management** area of the CMC Client, and on the Enterprise tab, scroll down to the Trusted Authentication section.
  5. Under **Trusted Authentication**:
    - a. Click **Trusted Authentication is enabled**.
    - b. Click **New Shared Secret**.
    - c. Enter the number of days for the **Shared Secret Validation Period** and timeout for the **Trusted Authentication** request. The recommendation is 1 day and 10000 milliseconds, but refer to the BO manual for details.
    - d. Click **Update** to save the settings
    - e. Reopen the **Enterprise tab**.
    - f. Click **Download Shared Secret**.
-

- g. In the File Download dialog box, click **Save** and copy the TrustedPrincipal.conf file to:

<INSTALLDIR>\SAP BusinessObjects Enterprise XI 4.0\win32\_x86\

<INSTALLDIR>\SAP BusinessObjects Enterprise XI 4.0\win64\_x64\

The Trusted Authentication Home folder as mentioned in Step 3.

**Note:** There is a chance the generated Shared Secret is too long that it causes an unnecessary line break. If this happens, generate a new Shared Secret.

After this is completed, you must enable **Trusted Authentication on the Coupling Service**. To do so:

1. Update the OSGi settings in MConfig.
2. Select the Trusted Authentication check box, and then copy the value of the shared secret inside TrustedPrincipal.conf to the Password from the preceding list.

### Setup in Tax Authority

**If you have not done so already, you must register with HMRC as either a filer or an agent using the following links before you can use this functionality in Maconomy.**

**Filers:** <https://www.gov.uk/guidance/use-software-to-submit-your-vat-returns>

**Agents:** <https://www.gov.uk/guidance/agents-use-software-to-submit-vat-returns>

**Note:** Direct any questions about your filing status to your tax advisors or HMRC, as Deltek does not act in an advisory capacity in this area.

### Testing

If you need to test the UK MTD functionality, contact Deltek Customer Care/Services.

## Unites States

### 1099 Misc Report

Set up a 1099 Misc option list for vendors who need to report 1099-Misc income.

### Setup in Maconomy

To configure Maconomy to use the 1099 report:

1. Go to **System Setup » Parameters and Numbers » Options Lists » Options List** to open the Option Lists workspace.
2. Click **New Option List**.
3. In the **Option List No.** field, enter **1099 Misc**.
4. In the **Description** field, enter a brief description for the option list.
5. Click **Create** and then complete the required fields on the Option List tab.
6. In the Options sub-tab, add the options for the 1099 Misc option list.

To set up vendors to include on the 1099 Misc report:

---

## Statutory

---

Note: Vendor invoices should already be created.

1. Go to **Single Dialogs » Accounts Payable » Set-up » Vendor Information Card** to open the Vendor Information Card workspace.
2. Select a vendor.
3. In the 1099 Reporting island on the Vendor Information Card sub-tab, select the **Disclosable** check box.
4. In the **Option List 1** field, select **1099 Misc.**
5. In the **Statistics 1** field, select an option.

## Setup in Tax Authority

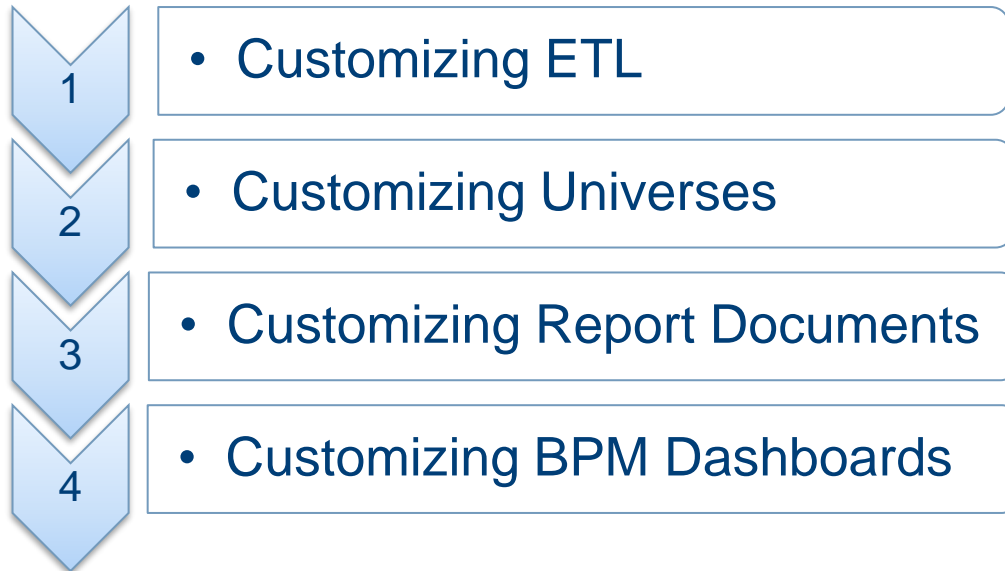
No setup required.

---

# Customization

## Workflow

This process of customization is divided into four main sections, described in the following.



All parts of BPM can in principle be customized in the sense that ETL, Universes, and Report Documents can all be modified to fit the needs of customers.

However, such modifications may be overwritten when upgrading to a new version or service pack of BPM. Therefore it is recommended as a general rule that all customizations are done on copies of the instances. In the following we shall explain further what that means.

## Customizing ETL

### General Rules

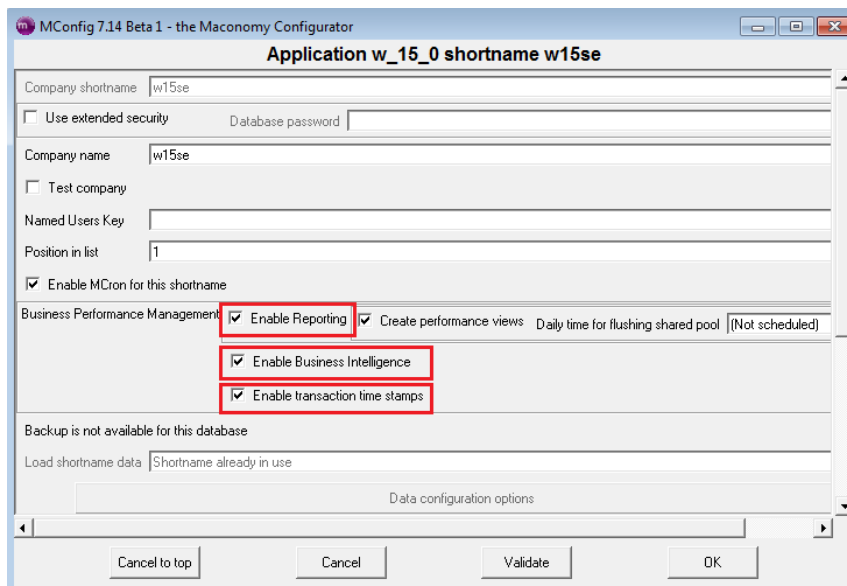
- All customizations to ETL (that is, jobs or transformations) should be done by new jobs and transformations dedicated to handle a certain customization.
  - These custom jobs and transformations must be placed in a folder called “custom” or “Custom” in the repository.
  - No standard jobs or transformations should be changed.
  - The folder structure (aside from that in the “custom” folder) should remain unchanged.
  - New jobs/transformations for loading custom-defined data should be scheduled or manually run after the standard LoadData or a custom version of LoadData can be made.
  - When upgrading, customizations may need to be reconsidered:
    - An upgrade may introduce standard functionality that previously has been implemented by customizations. It is recommended to include the standard functionality in favor of the customizations, if they fully satisfy the needs of the customer.
-

- An upgrade may change field names or semantics of fields. Consequently, customizations need to be adjusted carefully.
- An upgrade may declare fields or tables as deprecated (for example, if they are replaced by others or not included in Maconomy anymore). Customizations that rely on such fields and tables should be considered changed. In some situations it may be convenient for the customer to change the customizations such that they still rely on old functionality, for example, deprecated fields. Deprecated fields or tables that are removed by the upgrading process can then be reintroduced in custom tables. Note that a dump of the content of the deprecated table then must be done as part of the upgrade process.
- Carefully document the steps performed in the customization such that these can easily be reconsidered and possibly redone after an upgrade. Primarily, document the following:
  - Which standard tables the custom tables are copies of.
  - Which fields have been added to the copies of the standard tables.
  - The links that have been made.

## Transaction Time Stamps for Customized ETL

If the data warehouse ETL has been customized, additional tables may need to have transaction time stamps enabled. For example, if additional tables are maintained by the customized ETL, and incremental load is defined for these tables, the corresponding tables in Maconomy must have transaction time stamp triggers enabled.

Check **Enable Transaction Time Stamps** in MConfig for the database short name. This action enables transaction time stamp triggers for all Maconomy tables, and thus also the tables used in the ETL customization.



## Customizing Universes

To ensure that custom universes are not ruined when installing a new BPM package, it is best practice to always introduce a custom universe as a copy of a standard universe or a whole new universe.



**To customize a standard universe, complete the following steps:**

1. In Information Design Tool, retrieve the desired universe to universe files (see [Retrieve the Universe Files](#))
2. Choose another project or folder than the one used for the universe files of the standard universes.
3. The universe files can be edited freely to fit the customer's needs.
4. Publish the universe. You can choose whether to overwrite the existing universe or publish it with another name or to another folder. If you overwrite the existing (Standard) universe, make sure that all documents that use that universe (for example, Standard documents) indeed should run on the custom universe; otherwise, choose another name or folder for the custom universe.

When upgrading, custom universes that are stored with another name or in another folder are not overwritten. However, it is still recommended that you keep the universe files in case you need to publish the custom universes again.

## Customizing Report Documents

This section describes how to complete report documents and universe customizations.

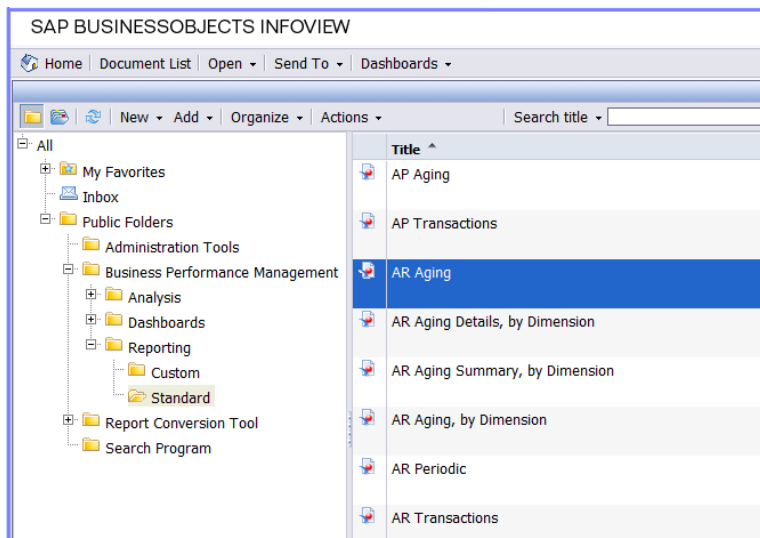
You can create the following customizations:

- Customize a single report
- Customize multiple reports
- Customize document styles

## Customizing a Single Report

**To customize a single standard report, complete the following steps:**

1. In Web Intelligence, locate the standard report to customize (in this example, AR Aging).



2. Open the selected standard report and click **Document » Save As**, then select a custom folder. Click **OK**.

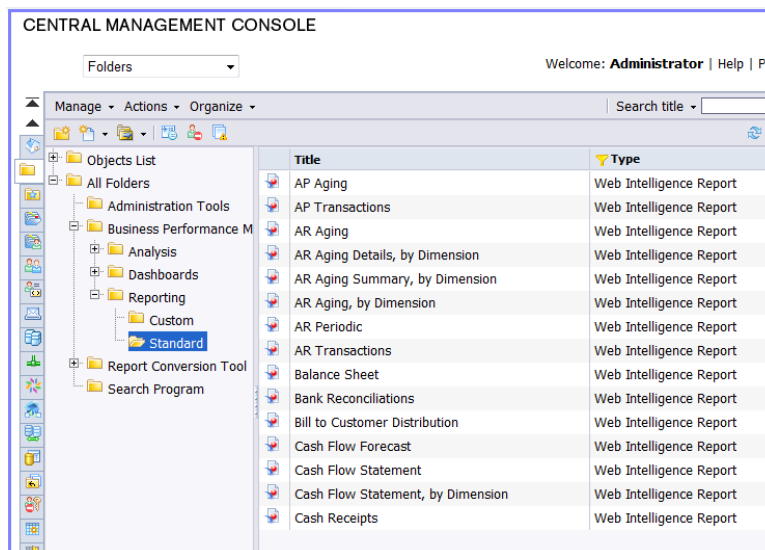
**Note:** Choose the **Refresh on open** option on the Save As dialog to refresh the report each time that you open it.

3. Make changes to the report and save the document.

## Customizing Multiple Reports

To copy all or selected standard reports to a custom location, complete the following steps:

1. In the Central Management Console, click **Business Performance Management » Reporting » Standard** to open the standard reports.



2. Select the report documents that you need, then right-click and select **Organize » Copy To**.
3. On the Copy To screen, select a Custom folder and click **Copy**.

The selected standard reports are now available as copies in the Custom folder.

## Customizing Document Styles

The standard report documents are prepared for customization concerning document style. Most of the layout elements use a default setting, which means that their style is taken from a cascading style sheet. An example is that font family, color, and border style in data tables follow the settings of the cascading style sheet.

The cascading style sheet is built into each report document and is not read dynamically.

If you want to use another style, you can import a new style sheet into each document. For convenience the cascading style sheet of the standard report documents is included in the RPU. This cascading style sheet is a good starting point for creating a custom one.

You can do the following with custom cascading style sheets:

- Modify
- Apply the style
- Export

## Modify the Style

**To modify a cascading style sheet, follow these steps:**

1. Copy the cascading style sheet from the RPU to the local machine from which WebIntelligence is run.
2. Open the style sheet in a text editor.
3. Modify the style sheet to the style that you want.
4. Save the style sheet.

Now you can apply the style sheet to your documents.

## Apply the Style

**To apply the style of a custom cascading style sheet, follow these steps:**

1. Open the WebIntelligence document to be modified.
2. Click **Properties**.
3. Click **Document**.
4. In the window that appears, click **Change Default Style...**
5. Click **Import Style**.
6. Browse to and select the modified style sheet file. Click **Close**, **OK**, and **Save**.

The styles of the cascading style sheet are now reflected in the document.

## Export the Style

**To export the cascading style sheet of a document, follow these steps:**

1. Open the WebIntelligence document that contains the style sheet that you want to export.
2. Click **Properties**.
3. Click **Document**.
4. In the window that appears, click **Change Default Style...**
5. Click **Export Style**.
6. Browse to the location of the style sheet file that you want to export.
7. Click **Save**.

A cascading style sheet file that reflects the styles of the document is saved to the file system. You can use this as a foundation for customizing the styles, similar to using the cascading style sheet delivered in the RPU.

---

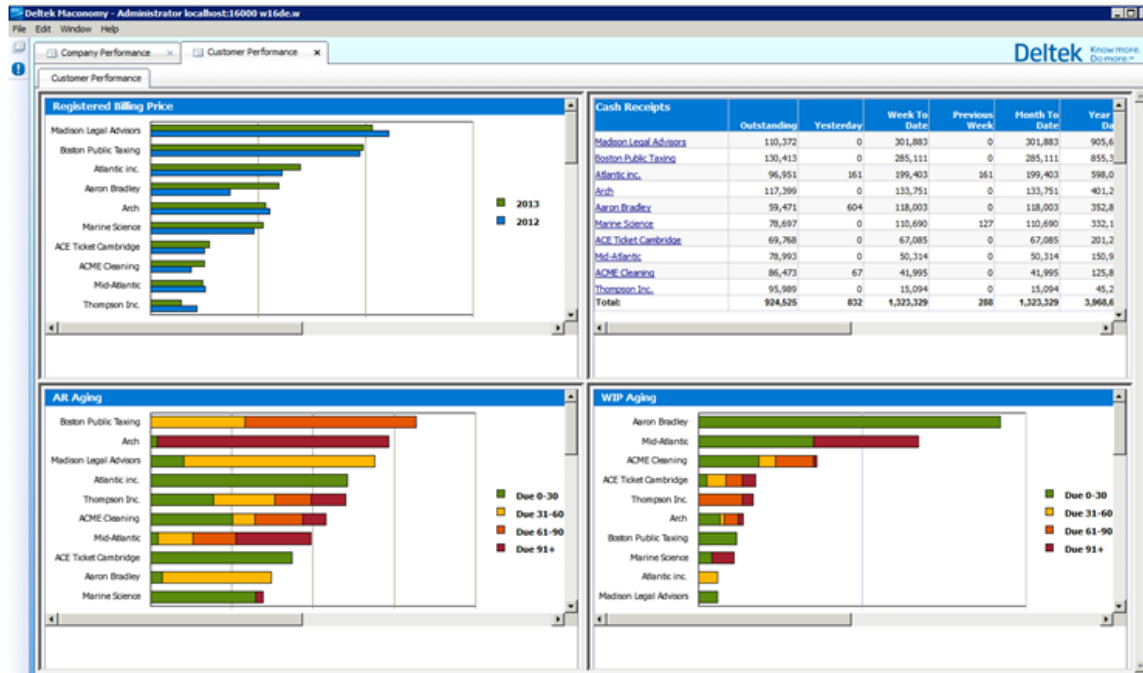
## Customizing BPM Dashboards

You can do the following to customize BPM dashboards:

- Edit the JSP files

### Editing the JSP Files

Each of the three BPM Dashboards has a JSP page that contains four iFrames that reference dashboard components (WebI Documents) in InfoViewApp.



The three JSP pages that are found in the RPU are as follows:

For Standard Dashboards:

**/dashboards/reporting/**

- CompanyPerformance.jsp
- CustomerPerformance.jsp
- JobPerformance.jsp

For CPA Dashboards:

**/dashboards/reporting/cpa/**

- CustomerPerformance.jsp
- JobPerformance.jsp

**Note:** CompanyPerformance.jsp is also used in CPA solution dashboards as the document names used are the same in Standard.

You can see the layout of the iFrames in this part of the code in each JSP:

```
out.println("<table>");
out.println("<tr>");
out.println("<td>");
out.println("<iframe src='" + ProductionRevenue + "' height='100%' width='100%'>"
+"</iframe>");
out.println("</td>");
out.println("<td>");
out.println("<iframe src='" + CashReceipts + "' height='100%' width='100%'>"
+"</iframe>");
out.println("</td>");
out.println("</tr>");
out.println("<tr>");
out.println("<td>");
out.println("<iframe src='" + ArAging + "' height='100%' width='100%'>" + "</iframe>");
out.println("</td>");
out.println("<td>");
out.println("<iframe src='" + WIPaging + "' height='100%' width='100%'>"
+"</iframe>");
out.println("</td>");
out.println("</tr>");
out.println("</table>");
```

The **src** attribute contains the path to the dashboard component.

The following figure shows a sample variable that contains the source path to the dashboard components.

```
//OpenDocument URLs for each of the Job Dashboards Components

String ProductionRevenue="http://" + cmsName +
":8080/OpenDocument/opendoc/openDocument.jsp?sType=wid&sPath=[B
usiness+Performance+Management],[Reporting],[Dashboard+Component
s],[Job]&sDocName=Registered+Billing+Price,+Top+10+Jobs+%28Bar
+Chart%29&token=" + wscToken + ...
```

The **sPath** parameter indicates the location of the report/dashboard component.

The **sDocName** indicates the name of the report. Note that the name of the report must be properly URL-encoded with spaces converted to "+" instead of "%20".

You can also pass prompt values to the dashboard components via the URL by using the URL-encoded name of the prompt. Thus, if you want to pass a value to the prompt "Account Manager No:" add the following part to the URL:

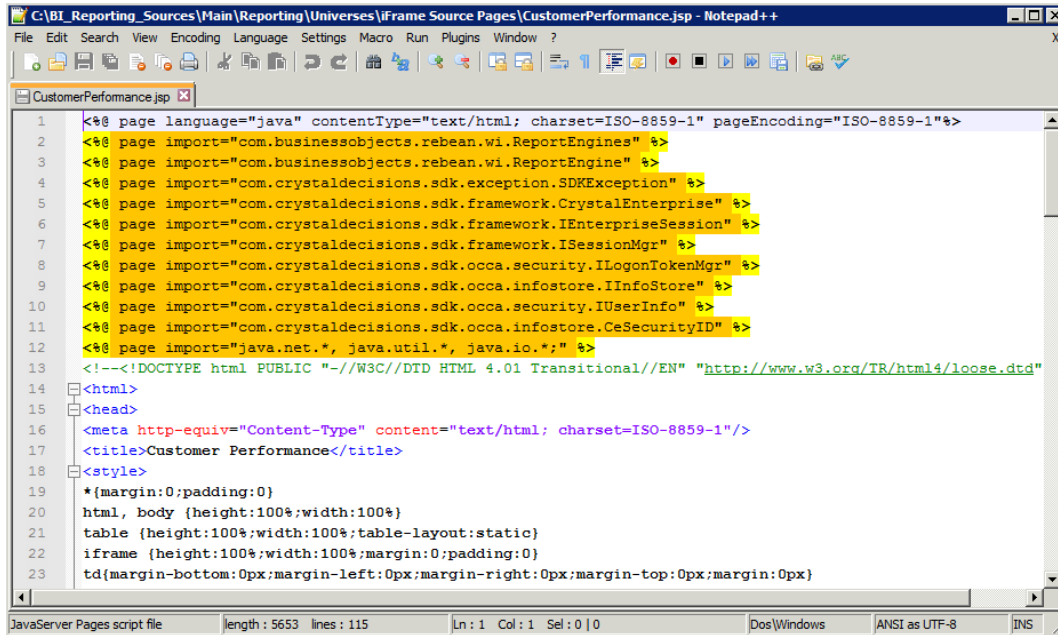
```
&lsSAccount+Manager+No%3A=" + accountMgrVal
```

**Note:** The name must be preceded by **lsS**.

An example of how to change the dashboard is shown in the following:

## Customization

1. Open the file to be changed.

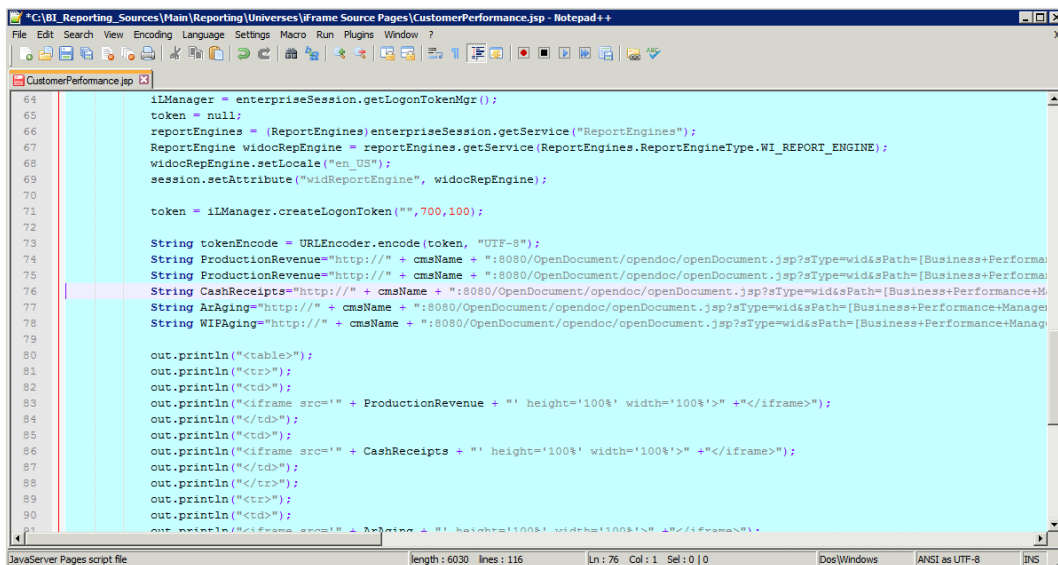


```

1  <%@ page language="java" contentType="text/html; charset=ISO-8859-1" pageEncoding="ISO-8859-1"%>
2  <%@ page import="com.businessobjects.rebean.wi.ReportEngines" %>
3  <%@ page import="com.businessobjects.rebean.wi.ReportEngine" %>
4  <%@ page import="com.crystaldecisions.sdk.exception.SDRException" %>
5  <%@ page import="com.crystaldecisions.sdk.framework.CrystalEnterprise" %>
6  <%@ page import="com.crystaldecisions.sdk.framework.IEnterpriseSession" %>
7  <%@ page import="com.crystaldecisions.sdk.framework.ISessionMgr" %>
8  <%@ page import="com.crystaldecisions.sdk.occa.security.ILogonTokenMgr" %>
9  <%@ page import="com.crystaldecisions.sdk.occa.infostore.IInfoStore" %>
10 <%@ page import="com.crystaldecisions.sdk.occa.security.IUserInfo" %>
11 <%@ page import="com.crystaldecisions.sdk.occa.infostore.CeSecurityID" %>
12 <%@ page import="java.net.*, java.util.*, java.io.*;" %>
13 <!--<!DOCTYPE html PUBLIC "-//W3C//DTD HTML 4.01 Transitional//EN" "http://www.w3.org/TR/html4/loose.dtd"
14 <html>
15 <head>
16 <meta http-equiv="Content-Type" content="text/html; charset=ISO-8859-1"/>
17 <title>Customer Performance</title>
18 <style>
19 *{margin:0;padding:0}
20 html, body {height:100%;width:100%}
21 table {height:100%;width:100%;table-layout:static}
22 iframe {height:100%;width:100%;margin:0;padding:0}
23 td{margin-bottom:0px;margin-left:0px;margin-right:0px;margin-top:0px;margin:0px}

```

2. Scroll down to the section where the four dashboard components are referenced.



```

64 iLManager = enterpriseSession.getLogonTokenMgr();
65 token = null;
66 reportEngines = (ReportEngines)enterpriseSession.getService("ReportEngines");
67 ReportEngine widocRepEngine = reportEngines.getService(ReportEngines.ReportEngineType.WI_REPORT_ENGINE);
68 widocRepEngine.setLocale("en_US");
69 session.setAttribute("widReportEngine", widocRepEngine);
70
71 token = iLManager.createLogonToken("",700,100);
72
73 String tokenEncode = URLEncoder.encode(token, "UTF-8");
74 String ProductionRevenue="http://" + cmsName + ":8080/OpenDocument/opendoc/openDocument.jsp?sType=wid&sPath=[Business+Performance+ProductionRevenue]";
75 String CashReceipts="http://" + cmsName + ":8080/OpenDocument/opendoc/openDocument.jsp?sType=wid&sPath=[Business+Performance+CashReceipts]";
76 String ArAging="http://" + cmsName + ":8080/OpenDocument/opendoc/openDocument.jsp?sType=wid&sPath=[Business+Performance+AccountsReceivableAging]";
77 String WIPaging="http://" + cmsName + ":8080/OpenDocument/opendoc/openDocument.jsp?sType=wid&sPath=[Business+Performance+WIPaging]";
78
79
80 out.println("<table>");
81 out.println("<tr>");
82 out.println("<td>");
83 out.println("<iframe src='"+ ProductionRevenue + "' height='100%' width='100%'>" + "</iframe>");
84 out.println("</td>");
85 out.println("<td>");
86 out.println("<iframe src='"+ CashReceipts + "' height='100%' width='100%'>" + "</iframe>");
87 out.println("</td>");
88 out.println("<td>");
89 out.println("<iframe src='"+ ArAging + "' height='100%' width='100%'>" + "</iframe>");
90 out.println("</td>");
91 out.println("<td>");
92 out.println("<iframe src='"+ WIPaging + "' height='100%' width='100%'>" + "</iframe>");
93 out.println("</td>");
94 out.println("</tr>");
95 out.println("</table>");

```

3. Create a copy of the line to be changed and comment one out.

## Customization

```

64 iManager = enterpriseSession.getLogonTokenMgr();
65 token = null;
66 reportEngines = (ReportEngines)enterpriseSession.getService("ReportEngines");
67 ReportEngine widocRepEngine = reportEngines.getService(ReportEngines.ReportEngineType.WI_REPORT_ENGINE);
68 widocRepEngine.setLocale("en_US");
69 session.setAttribute("widocRepEngine", widocRepEngine);
70
71 token = iManager.createLogonToken("",700,100);
72
73 String tokenEncode = URLEncoder.encode(token, "UTF-8");
74 String ProductionRevenue="http://" + cmaName + ":8080/OpenDocument/opendoc/openDocument.jsp?sType=wid&sPath=[Business+Performa
75 String ProductionRevenue="http://" + cmaName + ":8080/OpenDocument/opendoc/openDocument.jsp?sType=wid&sPath=[Business+Performa
76 String CashReceipts="http://" + cmaName + ":8080/OpenDocument/opendoc/openDocument.jsp?sType=wid&sPath=[Business+Performance+M
77 String ArAging="http://" + cmaName + ":8080/OpenDocument/opendoc/openDocument.jsp?sType=wid&sPath=[Business+Performance+Manag
78 String WIPaging="http://" + cmaName + ":8080/OpenDocument/opendoc/openDocument.jsp?sType=wid&sPath=[Business+Performance+Manag
79
80 out.println("<table>");
81 out.println("<tr>");
82 out.println("<td>");
83 out.println("<iframe src='"+ ProductionRevenue + "' height='100%' width='100%'>" + "</iframe>");
84 out.println("</td>");
85 out.println("<td>");
86 out.println("<iframe src='"+ CashReceipts + "' height='100%' width='100%'>" + "</iframe>");
87 out.println("</td>");
88 out.println("</tr>");
89 out.println("<tr>");
90 out.println("<td>");
91 out.println("<iframe src='"+ ArAging + "' height='100%' width='100%'>" + "</iframe>");
92 out.println("</td>");
93 out.println("</tr>");
94 out.println("</table>");
95

```

```

64 iManager = enterpriseSession.getLogonTokenMgr();
65 token = null;
66 reportEngines = (ReportEngines)enterpriseSession.getService("ReportEngines");
67 ReportEngine widocRepEngine = reportEngines.getService(ReportEngines.ReportEngineType.WI_REPORT_ENGINE);
68 widocRepEngine.setLocale("en_US");
69 session.setAttribute("widocRepEngine", widocRepEngine);
70
71 token = iManager.createLogonToken("",700,100);
72
73 String tokenEncode = URLEncoder.encode(token, "UTF-8");
74
75 /*
76 String ProductionRevenue="http://" + cmaName + ":8080/OpenDocument/opendoc/openDocument.jsp?sType=wid&sPath=[Business+Performa
77 String ProductionRevenue="http://" + cmaName + ":8080/OpenDocument/opendoc/openDocument.jsp?sType=wid&sPath=[Business+Performa
78 String CashReceipts="http://" + cmaName + ":8080/OpenDocument/opendoc/openDocument.jsp?sType=wid&sPath=[Business+Performance+M
79 String ArAging="http://" + cmaName + ":8080/OpenDocument/opendoc/openDocument.jsp?sType=wid&sPath=[Business+Performance+Manag
80 String WIPaging="http://" + cmaName + ":8080/OpenDocument/opendoc/openDocument.jsp?sType=wid&sPath=[Business+Performance+Manag
81
82 out.println("<table>");
83 out.println("<tr>");
84 out.println("<td>");
85 out.println("<iframe src='"+ ProductionRevenue + "' height='100%' width='100%'>" + "</iframe>");
86 out.println("</td>");
87 out.println("<td>");
88 out.println("<iframe src='"+ CashReceipts + "' height='100%' width='100%'>" + "</iframe>");
89 out.println("</td>");
90 out.println("</tr>");
91 out.println("<tr>");
92 out.println("<td>");
93 out.println("<iframe src='"+ ArAging + "' height='100%' width='100%'>" + "</iframe>");
94 out.println("</td>");
95 out.println("</tr>");
96 out.println("</table>");
97

```

4. Change the name of the referenced component.

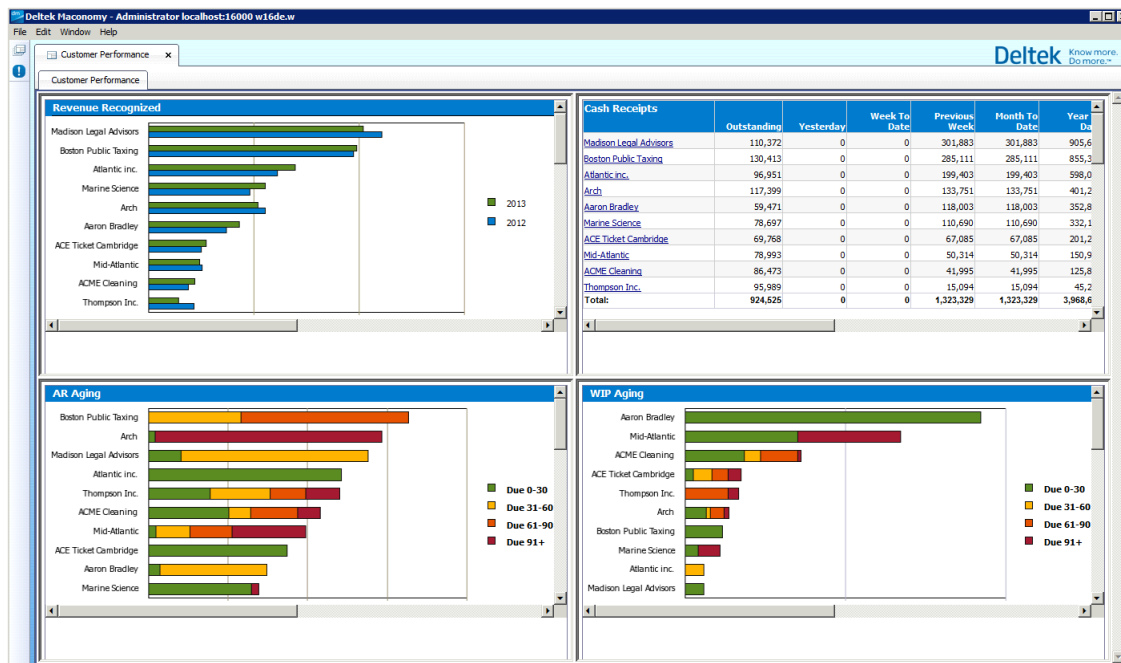
## Customization

```

64
65
66
67 T_ENGINE) :
68
69
70
71
72
73
74 type=widthPath=[Business+Performance+Management], [Reporting], [Dashboard+Components], {Customer}4sDocName=Registered+Billing+Price, <Top+10+Cu
75 type=widthPath=[Business+Performance+Management], [Reporting], [Dashboard+Components], {Customer}4sDocName=Revenue+Recognized, <Top+10+Cu
76 type=widthPath=[Business+Performance+Management], [Reporting], [Dashboard+Components], {Customer}4sDocName=Cash+Receipts, <Top+10+Customer+428Table
77 stb=[Business+Performance+Management], [Reporting], [Dashboard+Components], {Customer}4sDocName=AR+Aging, <Top+10+Customer+428Stacked+Bar+Chai
78 Path=[Business+Performance+Management], [Reporting], [Dashboard+Components], {Customer}4sDocName=WIP+Aging, <Top+10+Customer+428Stacked+Bar+Chai
79
80
81
82
83
84
85
86
87
88
89
90
91
92
93
94
95
96
97
98
99
100

```

The following shows the result.





## Other Setup

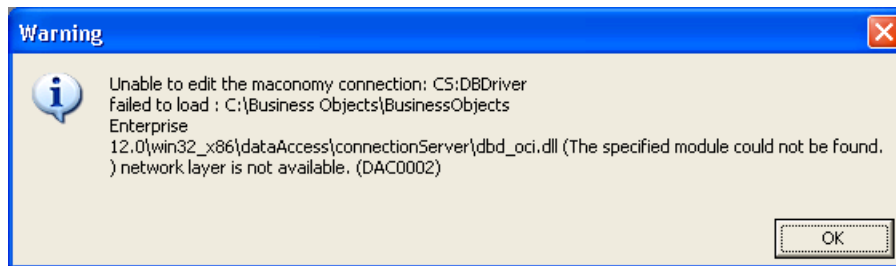
### In this section...

This section includes these additional procedures:

- Install the Oracle Instant Client Drivers (Windows)
  - Set Up an ODBC Connection for SQL Server
  - Enable Unicode
  - Increase the Number of WebI Connections
  - Configure Characterset Settings if Using Oracle
  - User Setup and Single Sign-On
  - Configure Logon Token on BusinessObjects
  - Localization
  - Handling BusinessObjects Services
  - Use a Non-Standard Web Server Port
  - Set Templates for Web Intelligence
  - Burst Publishing
  - Materialized Views on Oracle
-

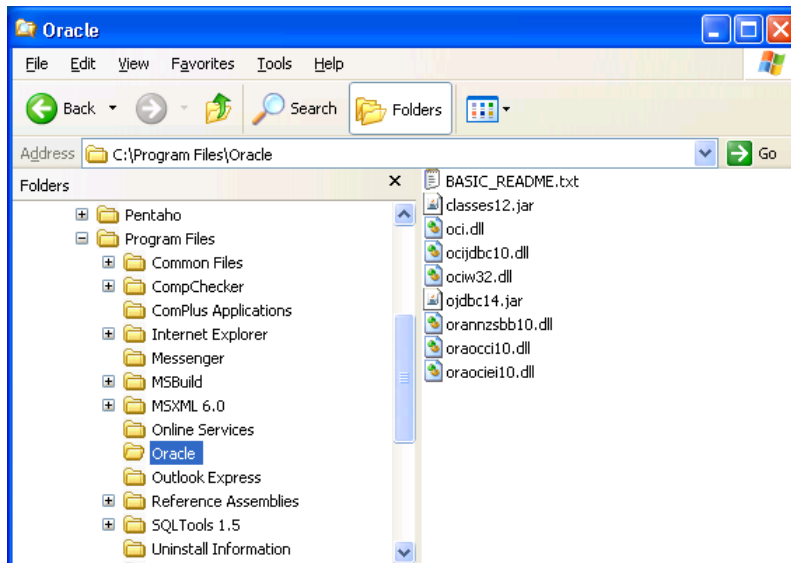
## Install the Oracle Instant Client Drivers (Windows)

If your Maconomy system uses Oracle DBMS, and the BPM server is different from the one that has the Maconomy database, you must install Oracle drivers to allow BusinessObjects access to the database and to prevent the following warning.



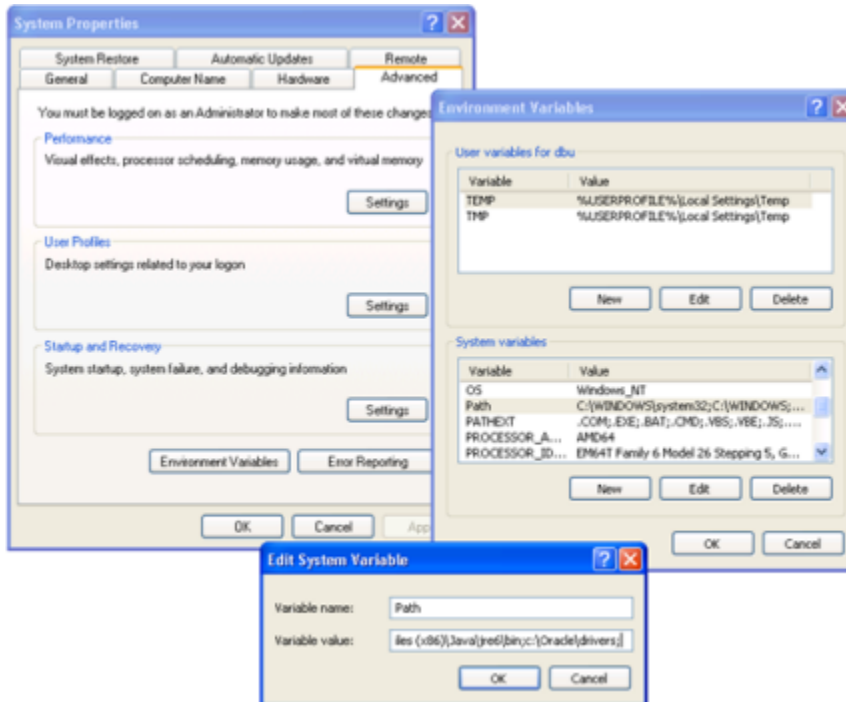
To install the Oracle Instant Client Drivers, follow these steps:

1. Navigate to: <http://www.oracle.com/technology/software/tech/oci/instantclient/index.html>.
2. Select your operating system.
3. Review and accept the license agreement and click **Next**.
4. Download either **Instant Client Package-Basic** or **Instant Client Package-Basic Lite**.
5. Unpack the drivers to a folder (for example, C:\Program Files\Oracle).



## Install the Oracle Instant Client Drivers (Windows)

6. Add the path to the drivers to the PATH variable.



7. Create the variable **TNS\_ADMIN** with the path to the same folder.
8. Create **tnsnames.ora** in the folder, for example:

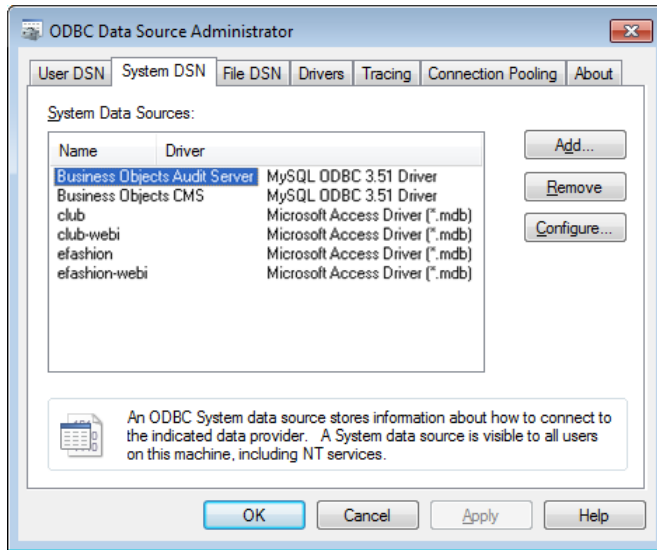
```
maconomy =
(DESCRIPTION =
  (ADDRESS_LIST =
    (ADDRESS = (PROTOCOL = TCP) (HOST = MACONOMYSERVER) (PORT = 1521))
  )
  (CONNECT_DATA =
    (SERVICE_NAME = maconomy)
  )
)
```

In this example, MACONOMYSERVER is the server that hosts the maconomy database, and maconomy is the SID of that database.

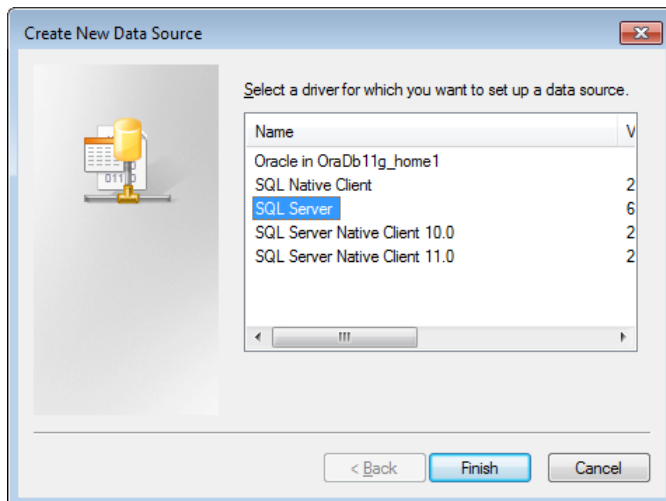
# Set Up an ODBC Connection for SQL Server

To set up the ODBC connection, follow these steps:

1. Run Data Sources (ODBC) using the appropriate path:
  - For 32-bit Windows — Click **Control Panel » Administrative Tools » Data Sources (ODBC)**.
  - For 64-bit Windows — Click **All Programs » BusinessObjects XI 3.1 » BusinessObjects Enterprise » 32-bit Data Source (ODBC)**.
2. Click **Add**.



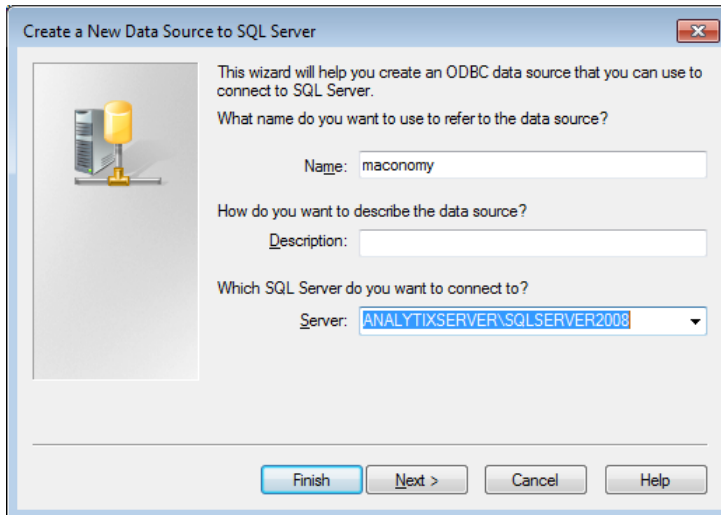
3. Select **SQL Server** and click **Finish**.



## Set Up an ODBC Connection for SQL Server

The Create a New Data Source to SQL Server wizard is displayed.

4. Enter the **Name**, **Description**, and **Server** information, and click **Next**.



Create a New Data Source to SQL Server

This wizard will help you create an ODBC data source that you can use to connect to SQL Server.

What name do you want to use to refer to the data source?

Name:

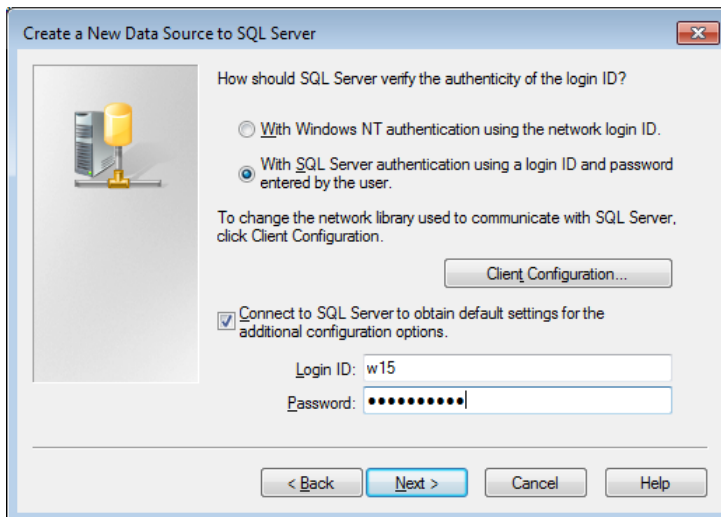
How do you want to describe the data source?

Description:

Which SQL Server do you want to connect to?

Server:

5. Select the method to use for authentication and click **Next**.



Create a New Data Source to SQL Server

How should SQL Server verify the authenticity of the login ID?

☐ With Windows NT authentication using the network login ID.

☒ With SQL Server authentication using a login ID and password entered by the user.

To change the network library used to communicate with SQL Server, click Client Configuration.

☒ Connect to SQL Server to obtain default settings for the additional configuration options.

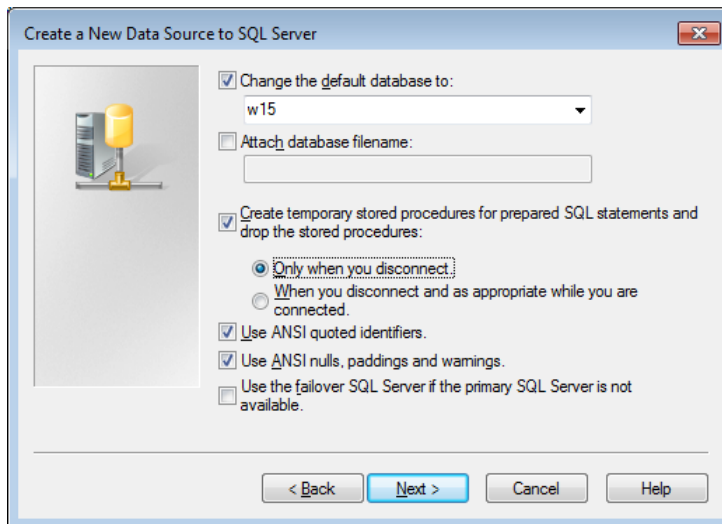
Login ID:

Password:

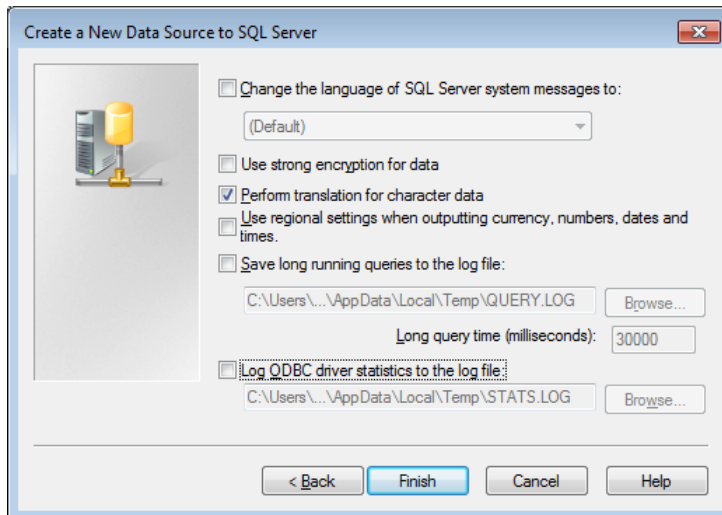
6. Enter the default database and ANSI information and click **Next**.

The following dialog box is displayed.

## Set Up an ODBC Connection for SQL Server



- Click **Finish** to complete the process.



## Enable Unicode

Beginning with version 16.0 (2.1), the Maconomy database and BPM must be Unicode-enabled. You do this as part of the installation or upgrade.

**To set up BPM for supporting Unicode, follow these steps:**

1. After you enable the Maconomy database for Unicode, follow the same steps for enabling the BPM Datawarehouse database for Unicode. See the documentation for information about how to enable Unicode on the Maconomy database.
2. If you are upgrading BPM Analysis, perform the upgrade steps as described in the [Upgrade](#) section.
3. If this is a new installation, perform the installation steps that are described in the BPM Analysis Installation Guide. Note that the database for the data warehouse must be Unicode-enabled.
4. If you have BusinessObjects installed on Windows, perform the following steps:
  - a. In the Windows registry set the following key:  
`HKEY_LOCAL_MACHINE\SOFTWARE\ORACLE\KEY_OraDb11g_home1\NLS_LANG`  
to  
`AMERICAN_AMERICA.AL32UTF8`
  - b. Create a system variable `NLS_LANG` and assign it the value:  
`AMERICAN_AMERICA.AL32UTF8`
5. If you have BusinessObjects installed on Linux or AIX, perform the following steps:
  - a. Set up an environment variable `NLS_LANG` with the value `AMERICAN_AMERICA.AL32UTF8`.
  - b. Restart the BusinessObjects services.

Ensure that universes have the parameter `UNICODE_STRINGS` set to `YES` (this is the default value).

---

## Increase the Number of WebI Connections

In the solutions, the Workspace Client embeds various BPM Reporting reports. To support this, you must increase the default number of parallel connections.

**To increase the number of parallel connections, follow these steps:**

1. Log in to BusinessObjects Enterprise Central Management Console (CMC).
2. Click **Servers**.
3. Expand **Server Categories** and click **Web Intelligence**.
4. Under **Server name**, double-click **WebIntelligenceProcessingServer**.  
The **Properties** window appears.
5. In the **Properties** window, under **Web Intelligence Processing Service**, enter the appropriate number of parallel connections.

The default value is 50. It is recommended that you increase the value to at least 100.

Alternatively, add more servers. Adding one more server with the default of 50 parallel connections yields the same number of connections (100) as the preceding steps.

On large production systems, it is recommended that you increase the number of servers and then lower the number of parallel connections on each of those servers. However, note that each user who runs the Workspace Client occupies a number of WebI connections.

**Note:** It is recommended that you **not** have more than one Web Intelligence Report server per available CPU core.

---



## Configure Characterset Settings if Using Oracle

BusinessObjects needs to know the character set of Oracle to correctly display characters. You should set the environment variable NLS\_LANG on the BO server.

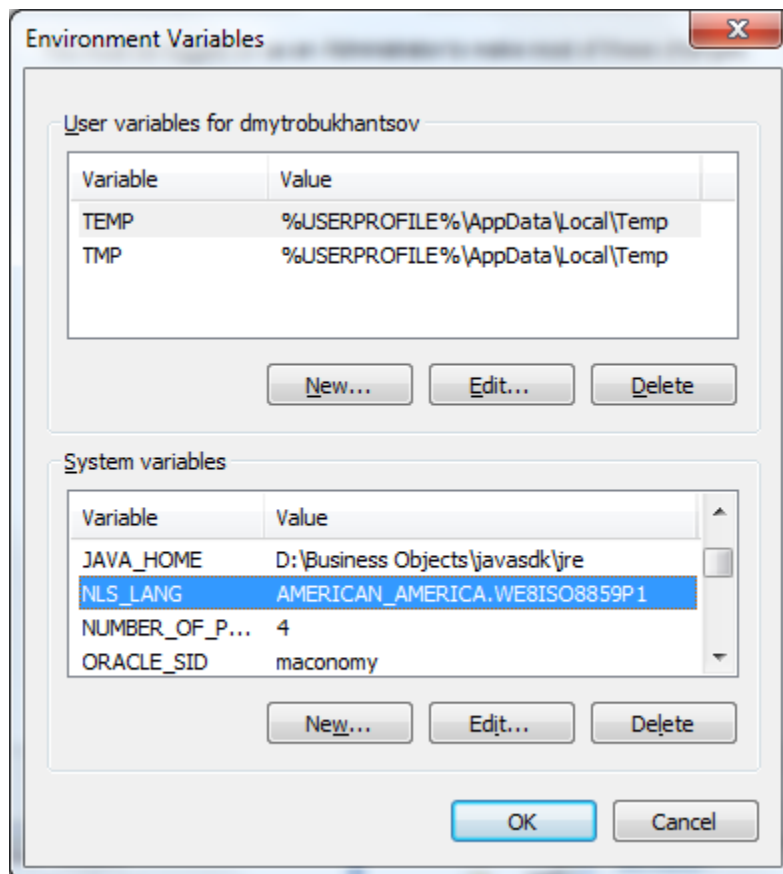
To configure character set settings, follow these steps:

1. Determine the NLS\_LANGUAGE and NLS\_CHARACTERSET using the following statement:

```
SELECT * FROM NLS_DATABASE_PARAMETERS WHERE PARAMETER IN  
( 'NLS_LANGUAGE', 'NLS_CHARACTERSET' )
```

**Tip:** For the default setup, the result is AMERICAN, WE8ISO8859P1.

2. Set the environment variable NLS\_LANG to the concatenation of these two strings separated by a dot, for example, AMERICAN.WE8ISO8859P1.



## User Setup and Single Sign-On

This section contains the following topics:

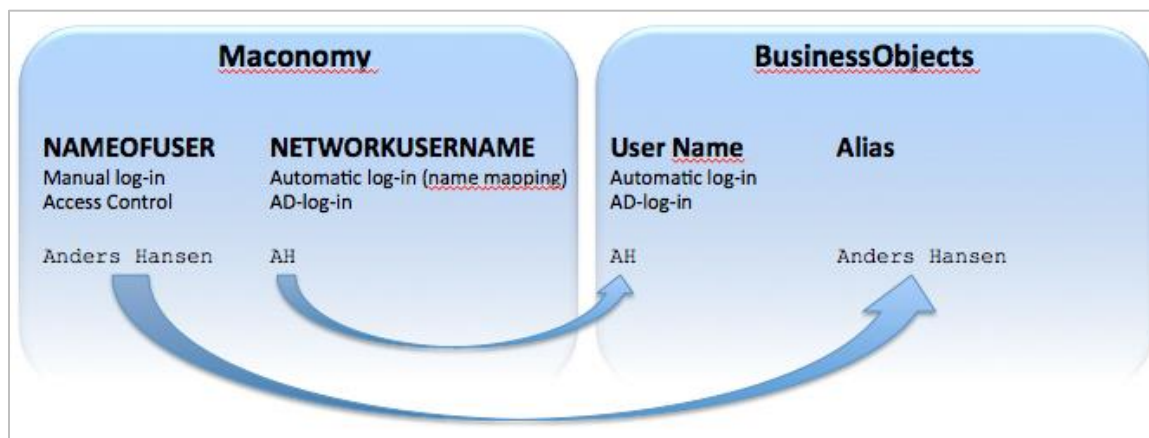
- User setup and single sign-on overview
- Active desktop and Maconomy configurations
- USync
- Configure a tenant in a multitenancy environment
- Control which users to create
- Error handling
- Assign report and universe rights

In Maconomy, access to data is controlled by the user name (**NameOfUser**). If single sign-on (SSO) is not defined and used, a user must log in to BusinessObjects using the same user name to be able to access data.

However, most often SSO is defined both in Maconomy and BusinessObjects.

- In Maconomy, a network user name is defined for each user. This network user name is equal to the active directory (AD) (Windows) user name. When you log in to the network, log-in is automatically performed in Maconomy using the network user name. Access to data is controlled by the user name with which the network user name is associated.
- In BusinessObjects, the AD (Windows) user name is the normal user name and thus equal to the network user name. To have access to Maconomy data, you create an alias for that user name. This alias is equal to the user name (**NameOfUser**) in Maconomy. When you log in to the network, log-in is also automatically performed in BusinessObjects using the user name. Access to the Maconomy data is via the alias that matches the user name (**NameOfUser**) in Maconomy.

The following figure illustrates this.



### Example

- In Maconomy, Anders Hansen uses **AH** as the network user name (and thus also AD log-in).
- Anders Hansen logs in to the network and automatically logs in to Maconomy as **AH**.
- This gives Anders Hansen access to all of the Maconomy data that his user name is defined to have access to.

- When opening WebIntelligence in BusinessObjects, Anders Hansen is automatically logged in as **AH**.
- The BusinessObjects user **AH** has the alias Anders Hansen. Therefore, the user has access to all of the Maconomy data that Anders Hansen is defined to have access to.

**Note:** With multi-user roles, Maconomy passes the login name as the user name.

## Active Desktop and Maconomy Configurations

Users must exist as AD (Windows) users on the domain. The mapping in Maconomy must be set up properly so that each Maconomy user has his or her AD (Windows domain) user name specified in the **Network Username** field in the Users workspace in Maconomy.

For example, the person **Anders Hansen** might have the user name **AHA** on the domain. The Network user name for the Maconomy user **Anders Hansen** should therefore be filled in as **AHA**.

## USync

You can use the USync tool to create users, user groups, and user aliases in BusinessObjects. USync creates BusinessObjects users and groups that correspond to the users in the Maconomy system. You can configure USync to create only users for which certain criteria are met.

USync can also remove BusinessObjects users or groups. This is convenient if users and groups have been removed from Maconomy.

Use the USync tool to complete the following tasks:

- Create users and groups in BusinessObjects that correspond to the ones that are defined in Maconomy. This allows users to access Maconomy data when running reports.
- Create aliases for each user so that, when logged in using another name by means of SSO, users can still access data.
- Synchronize users and groups for a tenant in a multitenant environment.

It is assumed that both Maconomy and BusinessObjects are set up for SSO.

## Install USync

### To install and prepare the USync tool:

1. Log in to the Maconomy server system.
  2. Start MConfig and select the appropriate Maconomy application.
  3. Click **Web products** and select the web server.
  4. Click **OK** and apply the change with MConfig.
  5. On the Web Products screen, enable **Web Services**.
  6. Download the file **USync.zip** from the download server:  
<\\d\\applications\\Released\\BPM\\Tools\\USync\\BO 4.2\\>
  7. Extract the zip file to a folder on the server where BusinessObjects is installed. Make sure that both the USync.jar file and the “external” folder are within the same folder.
-

## Create Users and Groups

### To transfer users and groups from Maconomy with USync:

1. Log in to the server on which BusinessObjects is installed.
  2. Open a command prompt.
  3. Run the USync java tool and enter the following parameters in the exact sequence as listed:
    - **<Maconomy administrator username>** – Enter the username of the Maconomy administrator to access the Web Service.
    - **<Maconomy administrator password>** – Enter the password of the Maconomy administrator to access the Web Service.
    - **<URL to MaconomyWS executable on web server>** – Enter the Maconomy web service URL from which USync derives the list of users to create in BusinessObjects.
    - **<BO username>** – Enter the username of the BusinessObjects user that has access to view, create, modify, and delete users in the CMS.
    - **<BO password>** – Enter the password of the BusinessObjects user that have the rights to view, create, modify and delete users in the CMS.
    - **<BO Server name>** - Enter the BusinessObjects server where users are created.
    - **<BO Authentication Type>** – Enter the authentication type that USync uses to log in the provided BO user above. It is recommended to use **secEnterprise**.
    - **<Log level>** – Set the value to **100** to show the minimum amount of information in the logs or to **500** to show a detailed trace of information.
    - **<Path and file name of log file>** – If there is no log file, the tool creates a new log file. If a log file already exists, the tool appends the logs to it. Note that USync does not create folders.
    - **<Delete-user-data (true/false)>** – This determines whether to allow USync to automatically delete a user in BusinessObjects that no longer matches with a user in Maconomy.
    - **<Create named BO users (true/false)>** – This determines the license type used to create the users. Set this to **true** to create named users (one license required per user) or **false** to create concurrent users (number of license pertains to the number of users that can login at the same time, no limit on the number of users that can exist in the CMS)
    - **<Create AD aliases in BO (true/false)>** – This determines whether BusinessObjects requires the configuration of the Windows AD plugin. Set this to **true** to automatically assign an alias to users that exists in Windows Active Directory.
    - **<Domain name used for AD alias creation>** – Enter the combined prefix and extension of the domain name used for AD alias creation (for example, trifolium.com). This is only necessary if the “Create AD aliases in BO” parameter is set to **true**.
    - **<Default password for new BO users>** – Enter a default password that all new created BusinessObjects users can use. This is only used for Enterprise authentication.
    - **<Passwords never expire (true/false)>** – To determine the expiration of passwords, enter **true** to ensure the user’s password will never expire. If you enter **false**, the user’s password expires according to the configured user restriction in **CMC » Authentication » Enterprise**. By default, this parameter’s value is set to **false**.
    - **<Must change password (true/false)>** – To determine whether the user must change the default password when first logging in, enter **true** to force users to change password on first
-

log in. Note that you cannot set this parameter to **true** if the “Can’t change password” parameter is also set to **true**.

- **<Can’t change password (true/false)>** – To determine whether who can set passwords, enter **true** to allow only the system administrators to set passwords. Note that you cannot set this parameter to **true** if the “Must change password” parameter is also set to **true**.
- **<Whitelisted group>** – Use this parameter to determine which users should not be deleted by USync when the “delete-user-data” parameter is set to **true**. Leave this blank if no group needs to be whitelisted.
- **<Allow update of existing BO users>** – This parameter controls whether the properties of an existing user in BusinessObjects is updated by USync. By default, this parameter’s value is set to **false**.

For example, if you enter:

```
java -jar USync.jar "Administrator" "123456" "http://BPMServer:20001/cgi-bin/Maconomy/MaconomyWS.w15p2mc.US_MCS.exe/" "Administrator" "ppu"
"macsrv.trifolium.com" "secEnterprise" "100" "C:\temp\usync.log" "false"
"false" "true" "trifolium.com" "1234-Pass" "true" "false" "false" "" "true"
```

This does the following:

- Creates users and groups that correspond to users and groups that are set up in Maconomy. If only certain users are wanted, you can define criteria for them.

**Note:** See [Configuring a Tenant in a Multitenant Environment \(Optional Installation\)](#).

- Creates aliases for these users to handle access control.
  - Does not remove existing users that are defined in BusinessObjects. The users that are created are in addition to the users that are already there.
  - Sets the default password of the new users to **1234-Pass**.
  - Uses the web server executable (a 15.0 sp 2 MCS system in the preceding example) to determine the Maconomy system that is used.
  - Stores the log output from USync in the file **C:\temp\usync.log**.
4. Open the Central Management Console and click **Groups** or **Users** to confirm that the synchronization succeeded.

For each user, you can see the group memberships on the Member of tab. For each group, you can see the members of the group on the Users tab. If you chose to create AD aliases, you can see them under each user in the lower part of the window.

## Configuring a Tenant in a Multitenant Environment (Optional Installation)

Multitenancy enables you to host multiple clients on one server where each client has their own access sites and properties. These additional steps are optional and not part of the Usync default installation.

The setup of multitenancy includes the following steps:

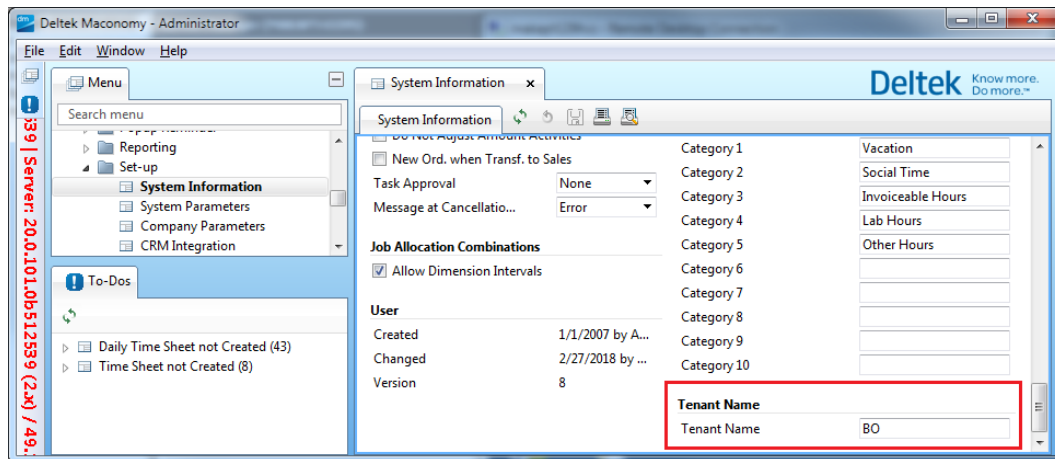
- Tenant configuration in the Maconomy Workspace client.
  - Set up corresponding tenant in BusinessObjects server.
-

- Synchronize users using Usync.

## Set Up a Tenant Name in Maconomy

### To set up a tenant name in Maconomy:

1. Open the **System Information** single dialog workspace.
2. Scroll down to the Tenant Name island and enter a unique name in the **Tenant Name** field.



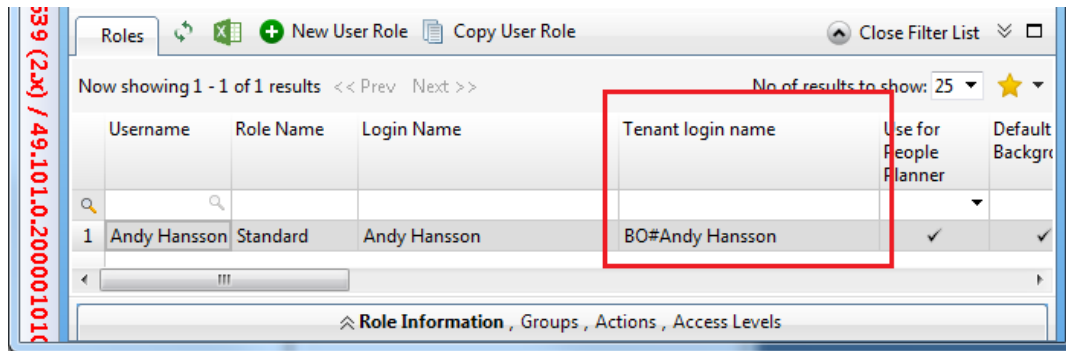
**Note:** To check if a tenant name is already in use, go to BusinessObjects CMC » Multitenancy.

3. Click **Save**.

## Validate the Tenant Name in Maconomy:

### To validate the tenant name in Maconomy:

1. Log in to the Maconomy Workspace Client with the necessary rights to access system setup, preferably as Administrator.
2. Open the **Users** workspace (Setup » Users) and expand the **User Information** tab.
3. Add the **Tenant Name** column to the Roles tab.
  - a. Right-click any column on the Roles tab and click **Customize columns**.
  - b. In the Available Columns section, select **Tenant Login Name**.
  - c. Click **Add** and move the column up or down, depending on the desired location.
  - d. Click **OK**.
4. In the Tenant Login Name column, verify that the tenant name is prefixed in the login name with the format **tenantName#LoginName**.



## Register Tenant with BusinessObjects 4.2 Multitenancy Management Tool (Windows)

BusinessObjects 4.2 Business Intelligence Platform comes pre-installed with the Multitenancy Management Tool (MTM). This tool handles the registration of a tenant and other configurations controlled through a template definition file.

**Tip:** Refer to the [SAP Multitenancy Guide](#) for more information.

### To define MTM properties:

1. Open the **tenant\_template\_def.properties** file in a text editing application. The file is located in the same directory as the BusinessObjects 4.2 Multitenancy Management Tool.

**Note:** The default location and file name is <InstallDir>\SAP BusinessObjects Enterprise XI 4.0\java\apps\multitenancyManager\jars\multitenancymanager.jar.

2. In the **tenant\_template\_def.properties** file:
  - a. Add the desired tenant name to the tenantName parameter. For example, tenantName=XXX.
  - b. Add the mandatory login information:
    - cms
    - auth
    - user
    - pwd (Optional. If left blank, user is prompted for password to proceed.)
3. Save the file.

### Run the MTM tool

#### To run the MTM tool:

1. Open a command prompt. It is recommended that you run this as Administrator to avoid permission conflicts.
2. Change the directory to the location of the multitenancymanager.jar file (<InstallDir>\SAP BusinessObjects Enterprise XI 4.0\java\apps\multitenancyManager\jars)
3. Run the following command:

```
java -jar multitenancymanager.jar -configFile
```

## Verify the Tenant is Created Successfully

### To verify the tenant is created successfully:

1. Log in to the **Central Management Console**.
2. On the Multitenancy tab, verify the tenant name is listed in the **Name** column.

## Synchronize Users with USync

### To synchronize users with USync:

1. Download the **USync.zip** from the dl server at \\d\applications\Released\BPM\Tools\USync\BO 4.2 Multitenancy\.
2. Extract the zip files.
3. Open a command prompt (run as Administrator).
4. Change the directory to the location of the extracted zip file, **USync.jar**.
5. Run the command: **java -jar USync.jar** with the following parameters:

PARAMETER	VALUE
Maconomy Username	Maconomy Admin username
Maconomy Password	Maconomy Admin password
Web Service URL	MaconomyWS URL found in ..\maconomy\index.html
BO Username	BO Admin username
BO Password	BO Admin password
CMS	BO Server
BO Authentication	secEnterprise, secWinAD, etc.
Log Level	0 = no message, 500 = debug mode
Log File Name	File for the log file including directory
Delete User Data	delete users that does not exist in Maconomy
Named Users	Boolean, true=named user or false=concurrent user
Create AD Aliases	Boolean, create AD Alias for SSO
AD	Domain used for AD Alias Creation
Default Password	Password assigned to created BO users
Passwords Never Expire	Boolean, user attribute
Must Change Password	Boolean, user attribute
Can't Change Password	Boolean, user attribute
White List Groups	Groups ignored by delete user data parameter

---



PARAMETER	VALUE
Allow Update	Allows USync to update existing users

Example:

```
C:\USync>java -jar USync.jar "Administrator" "MaconomyPassword" "http://localhost:20003/cgi-bin/Maconomy/MaconomyWS.shortname.en_US.exe/" "Administrator" "BOPassword" "BOServer" "secEnterprise" "500" "C:/USync.log" "false" "true" "false" "" "DefaultPassword" "true" "false" "false" "SysAdmins" "false"
```

6. When completed, verify that the users and groups are created in BusinessObjects CMC.
  - a. Log in to **Central Management Console**.
  - b. On the **Users and Groups** tab, verify both users and groups are prefixed with the tenant name.

## Control which Users to Create

To create only specific users, or users that satisfy certain conditions, configure USync.

**To configure USync, follow these steps:**

1. In the Maconomy web server folder **\\MaconomyWS\Services\Standard** locate the **USyncSQL.txt** file.
2. Edit the file so that it contains an SQL-like expression that selects the users.

### Examples

#### Example 1: Select Users by Means of Popup 1

You want to control which user to import by using Popup 1 on the employee who is associated with the user. If you set up this pop-up with one value, BusinessObjects, so that it either has this value or is blank on each employee, you can insert the following additional condition in the WHERE clause for the import of user data and role membership data.

```
0 = (select EmployeePopup1 from Employee
    where EmployeeNumber = UserInformation.EmployeeNumber)
```

If there is no employee on the user, the selected value is **null**. If Popup 1 is blank on the employee, the selected value is **-1**.

#### Example 2: Select Users Based on Roles

You want to import only those users who have certain roles. In this case, use the following additional condition:

```
EXISTS (SELECT 'OK' FROM EXUserDialogGroup
    WHERE NameOfUser = UserInformation.NameOfUser
    AND GroupName IN ('FinancialManagement', 'LineManagement'))
```

In an MAS solution, this imports 19 users, including Andy Polansky, Lisa Welsh, and Sue French. In the MCS solution you could change the restriction on the group name to **GroupName IN (FinancialManagement, DepartmentManagement, AccountManagement)**, and then you would get 17 users, including Edward Powers and Micho Spring.

## Error Handling

The output message may contain errors.

---

- If the output message contains:
  - “This user does not exist” — You did not enter a valid Maconomy user name.
  - “Password is not correct” — You did not enter a correct password for the Maconomy user.
  - “Enterprise authentication could not log you on” — There is a problem with the BusinessObjects username or password.
  - If you cannot open the <http://localhost/index.html> page, there may be an error in the global parameters in M-Config. Open M-Config, click the **Global settings** button and make sure that the **Export HTML index file to** field has the correct value (for example: C:\Apache\Apache2\htdocs).

#### (404) Not Found

- If the output message contains “(404) Not Found,” there is a problem with the URL in the **Web service URL** field. This is also the case if the output message refers to SAXParseException, ConnectException, UnknownHostException, or “unknown protocol.”

One possible reason for the 404 error could be that the Webserver URL in M-Config is incorrect.

#### To fix the 404 error, follow these steps:

1. Open M-Config.
2. Select the relevant application.
3. Click **Web products**.
4. Select the appropriate web server.
5. Click **Web server parameters** and make sure that the **Webserver URL** (host and port) field has the correct value.

For example, if the installation uses a virtual web server, the field should be **http://** followed by the name of the server, followed by the virtual web server port number (separated by a colon), with a / (slash) at the end. If you make a change in M-Config, you may need to restart the web daemon before the changes take effect.

## Assign Report and Universe Rights

Before you perform this procedure, you must consider which users or groups should be given access to which reports and universes.

#### To manually set up access rights in BusinessObjects, follow these steps:

1. Open the Central Management Console.
  2. Click **Folders** and then locate the reports in the Maconomy folder.
  3. For each report, set up the access rights by clicking on the report and opening the Rights tab.
  4. Make sure that the rights for the group **Everyone** are set to **No Access**, click **Add/Remove** to insert a line (for example, a new group), and then click **OK**.
  5. Change the rights to a different setting, for example, **View On Demand**.
-

**Note:** You must grant each universe and connection to the specific groups of users. This may take some time if there are many groups and many reports.

It is recommended that you assign rights to groups (containing users), rather than directly to users.

## Configure Logon Token in BusinessObjects

With the Dashboard Components iFrames installed, an “obsolete token error” might occur if the token that is used for signing in to BusinessObjects has expired.

There are two ways to avoid this error, both of which involve changing the files that are deployed in BusinessObjects:

- Increase available document instances
- Prevent users from using outdated tokens

### Increase Available Document Instances

To increase the number of document instances that are available on the system, modify the parameters in the `webi.properties` file.

**To modify the `webi.properties` file appropriately, follow these steps:**

1. Locate the `webi.properties` file at `C:\Program Files(x86)\Business Objects\Tomcat55\webapps\AnalyticalReporting\WEB-INF\classes\webi.properties`.
2. Uncomment the `WID_FAILOVER_SIZE=11` and `WID_STORAGE_TOKEN_STACK_SIZE=11`.
3. Save and close the file.
4. Restart the web application server.

### Prevent Users from Using Outdated Tokens

To prevent users from using outdated tokens, set the `logontoken.enabled` parameter in the `web.xml` file.

**To modify the `web.xml` file appropriately, follow these steps:**

1. Locate the `web.xml` file at `C:\Program Files(x86)\Business Objects\Tomcat55\webapps\InfoViewApp\WEB-INF\web.xml`.
2. Find the `logontoken` phrase and change the parameter value from `true` to `false`.

```
<context-param>
    <param-name>logontoken.enabled</param-name>
    <param-value>>false</param-value>
</context-param>
```

3. Save and close the file.
  4. Restart the web application server to apply the changes.
-

## Localization

In BPM, you perform tasks for localization using the BusinessObjects Translation Manager tool, which is part of BOE. The Translation Manager uses the standard XLIFF XML-schema that defines the word or term translation between all standard languages. You cannot create languages, but you can maintain several versions that represent different dialects. For example, for the language “English,” there are different kinds (dialects) such as US English and UK English.

You can localize both universes and reports.

This section includes the following material and procedures:

- BPM translator tool overview
- Perform a translation

### BPM Translator Tool Overview

Maconomy uses simple text files that are called dictionaries that contain word-to-word translations. These dictionaries are translated to XLIFF format using BPM's Translator tool.

The Translator tool takes two input parameters:

- A Maconomy dictionary
- Initial XLIFF file

The Maconomy dictionary is a text file that contains word combinations (terms) of items such as universe object names and descriptions. The dictionary associates these terms with corresponding terms in another language. The terms in the two languages are tab-separated. The Translator tool recognizes space symbols as part of the terms so that, for example, “good night” can be translated into “buenas noches.”

The Translator tool takes the Maconomy dictionary and an initial XLIFF-file and generates another XLIFF-file by substituting dictionary terms that occur before the tab symbol with dictionary terms that occur after the tab symbol. The initial XLIFF-file is generated from the universe and reports and thus contains all of the terms that are necessary for the translation.

### Perform a Translation

This section describes how to perform a translation. To perform a translation, you must:

- Generate the initial XLIFF file
- Modify the initial XLIFF file
- Perform the translation

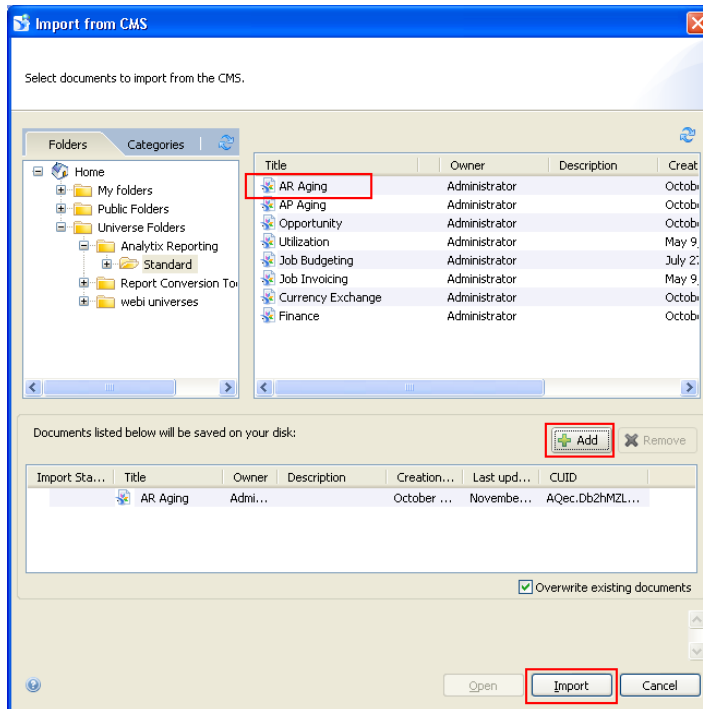
### Generate the Initial XLIF File

To generate the initial XLIF file, follow these steps:

1. Run the BusinessObjects Translation Manager.
  2. Click **File » Import from CMS**.
  3. Browse to and select the universe to be localized, and then click **Add**.
-

4. Click **Import**.

The following example shows selections for steps 3 and 4.



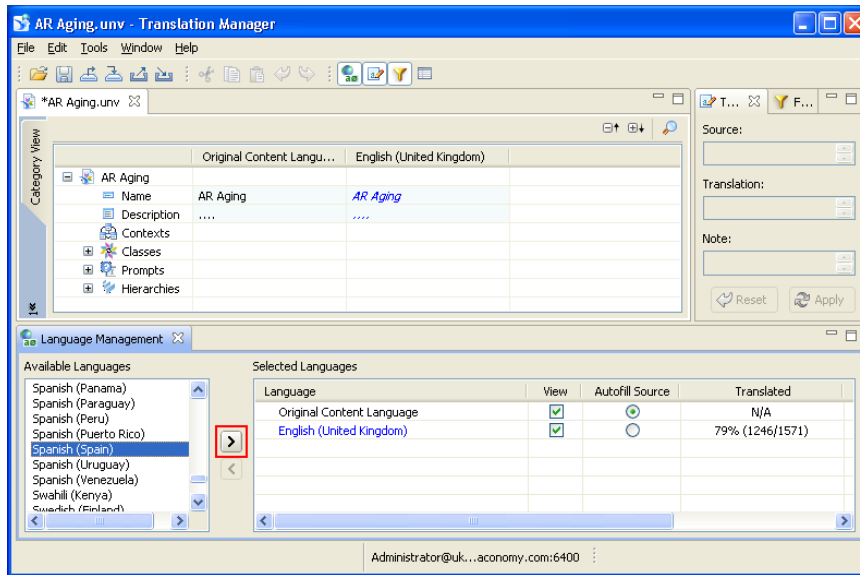
5. Click **Add**.

6. On the Language Management tab, select the **From** and **To** languages.

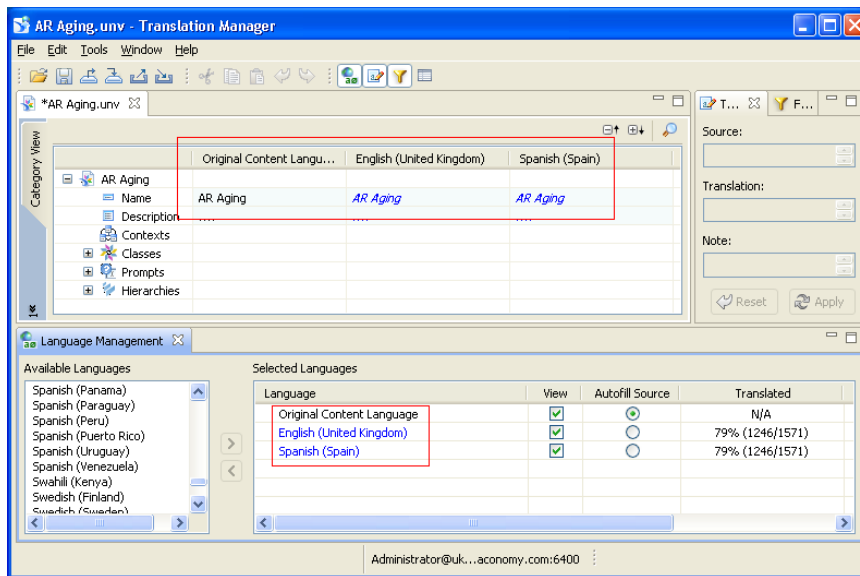
The original language is already selected. You must select two additional languages.

- **Original language** — Refers to the language of the universe (Maconomy W language). This is selected from the start.
- **From-language** — The language to which the Maconomy W language refers in XLIF. This is usually English (United Kingdom), and terms are provided in UK English by default.
- **To-language** — The language into which you want to translate, such as Spanish.

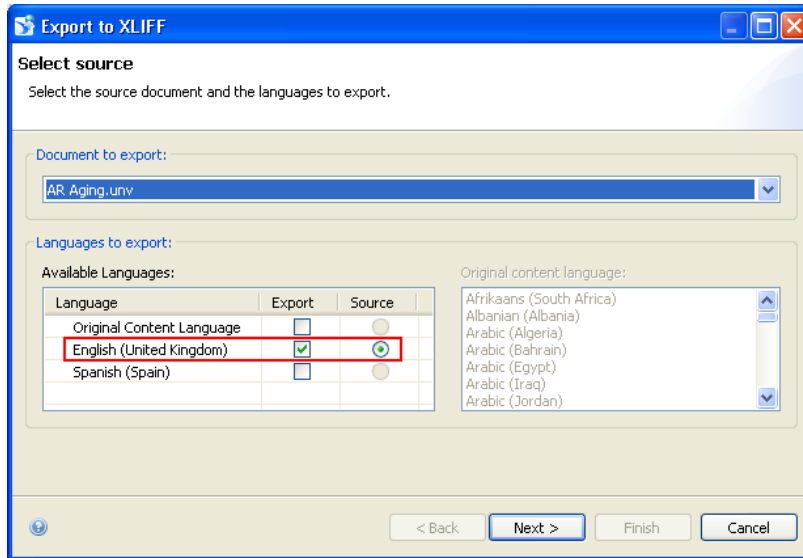
## Localization



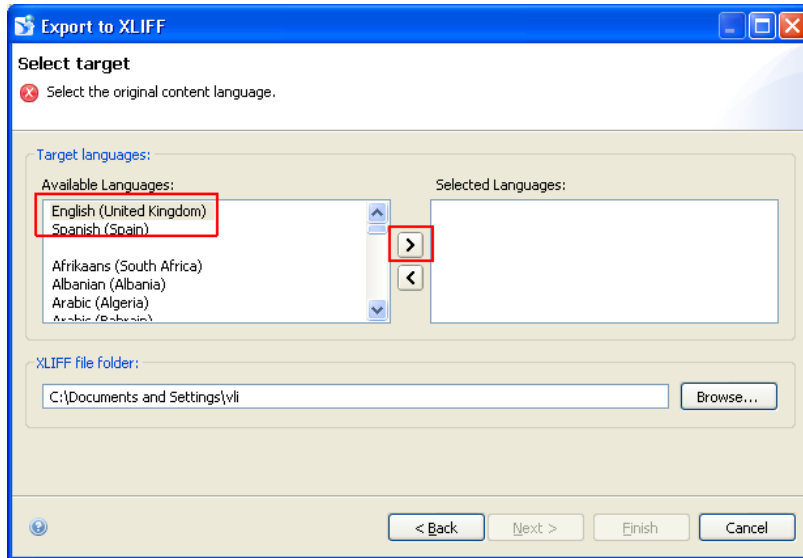
After you have designated the languages, the following is displayed.



7. Click **File » Export to XLIFF**.

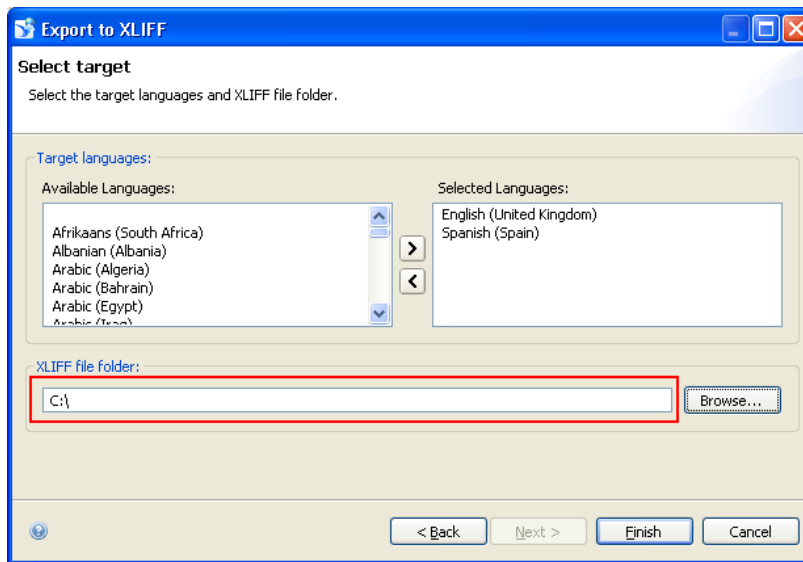


8. Select **Source** to designate one of the languages as the language in which the universe is provided. In the preceding example, it is English (United Kingdom). The source should be the same as the language from the first **Dictionary-file** column.
9. Click **Next**.
10. From the **Available Languages** list, select the **From** language for the XLIFF file.





- Click the arrow to move the languages to the **Selected Languages** list.  
These are the **To** languages for translation.



- Click **Finish**.

Two files are available in the XLIFF file folder:

- AR Aging.unv\_en\_GB\_en\_GB.xlf
- AR Aging.unv\_en\_GB\_es\_ES.xlf

The file that has different languages in its name should be the initial XLIFF file that is used as one of the tool's input files.

## Modify the Initial XLIFF File

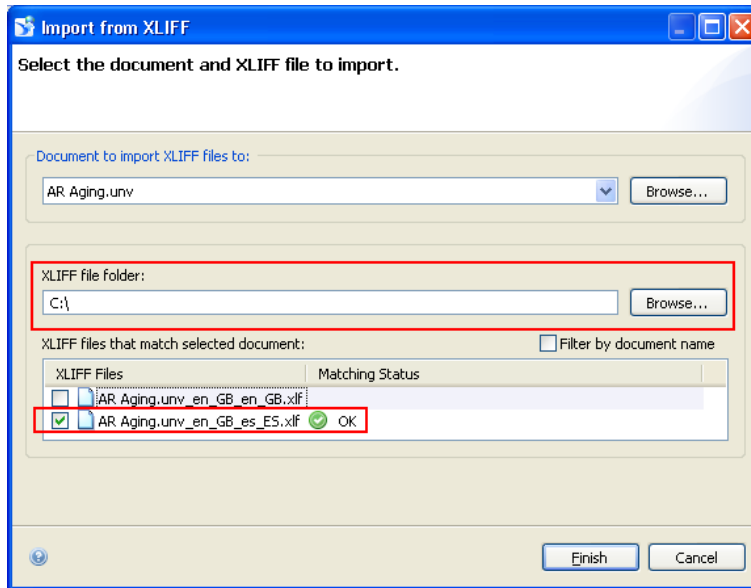
The initial XLIFF file contains all of the terms of the universe; however, you must incorporate the translation principles of the Maconomy dictionary. Therefore, you should apply this tool to modify the initial XLIFF file before continuing.

**Tip:** Refer to the [readme.txt](#) file that is provided with the tool for translating the Maconomy dictionary file into XLIFF for information about how to run that tool.

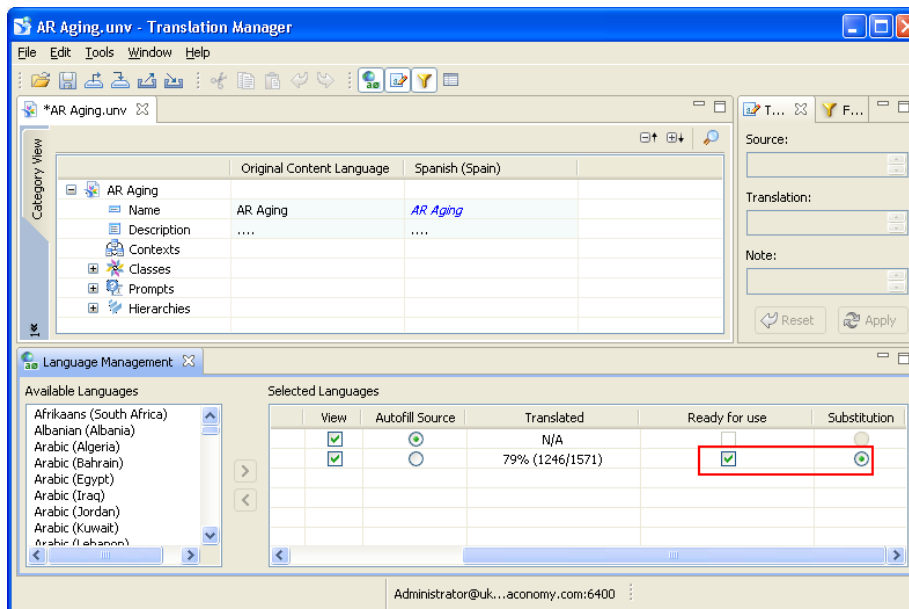
## Perform the Translation

To perform the translation, follow these steps:

- Click **File » Import from CMS** and import the universe to the Translation Manager.
- Click **File » Import from XLIFF** and import the output file created in the previous steps.



- After you import the XLIFF file, select the second language in the list as **Ready for use**.



- Export the universe to the CMS and run Webl to validate that the translation has been applied.

**Tip:** It is recommended that you export a copy to another location, so that future upgrades of the standard delivery do not overwrite the changes. See the *Business Performance Management Reporting Customization and Upgrade Guide*.

## Handling BusinessObjects Services

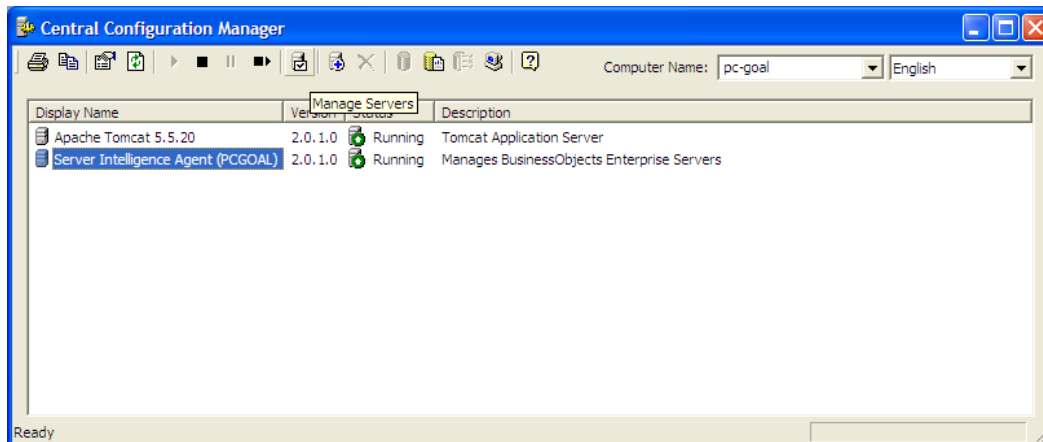
The standard BusinessObjects Enterprise installation has several services that are set up to start automatically. For this reason, the server startup is slower. However, if you do not need all of the services, the following information explains how to change the startup type on some of them, including:

- Changing the start-up type
- Removing Performance Manager

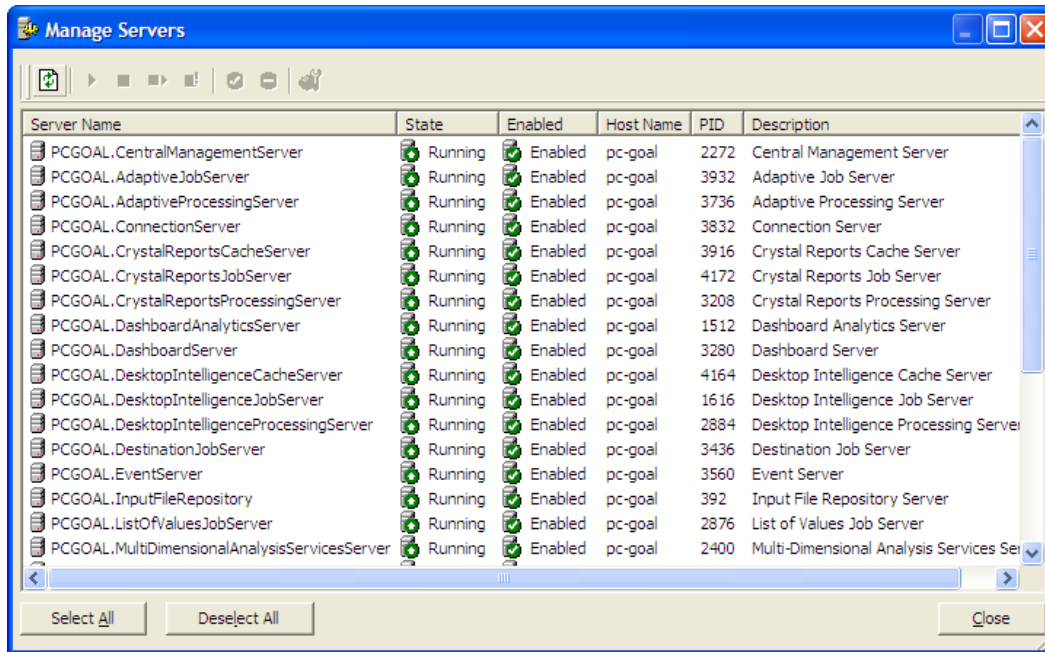
### Change Start-Up Type

To change the start-up type, follow these steps:

1. Click the Windows **Start** button, then click **All programs » SAP Business Intelligence » SAP BusinessObjects BI platform 4 » Central Configuration Manager » Manage Servers**.



2. Log in to the CMS.  
A list of the BusinessObjects servers is displayed.



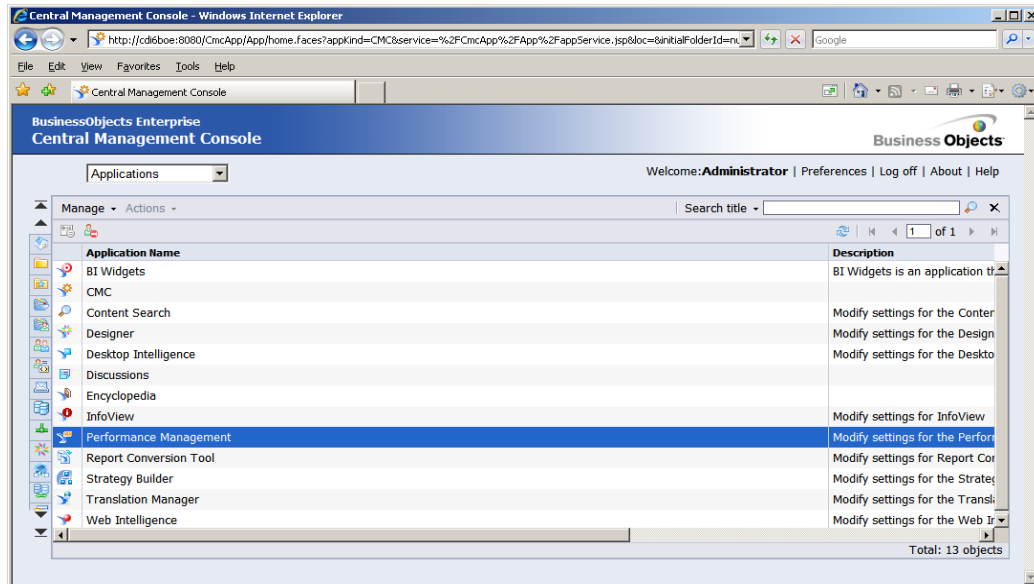
3. You might want to stop the following list of servers and change their startup type to **Manual** in their properties:
  - Crystal Reports Cache Server
  - Crystal Reports Job Server
  - Crystal Reports Processing Server
  - Desktop Intelligence Cache Server
  - Desktop Intelligence Job Server
  - Desktop Intelligence Processing Server

## Remove Performance Manager

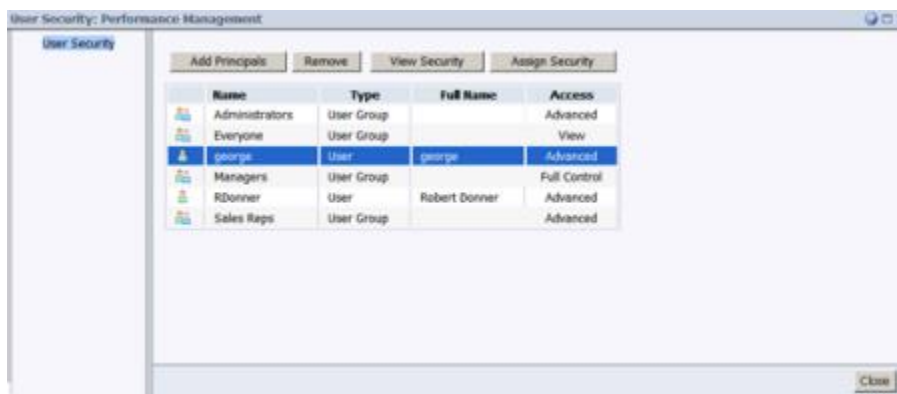
To restrict access to Performance Manager, follow these steps:

1. Click the Windows **Start** button, then click **All programs » SAP Business Intelligence » SAP BusinessObjects BI platform 4 » SAP » BusinessObjects Enterprise Central Management Console**.

- Click the Applications tab.

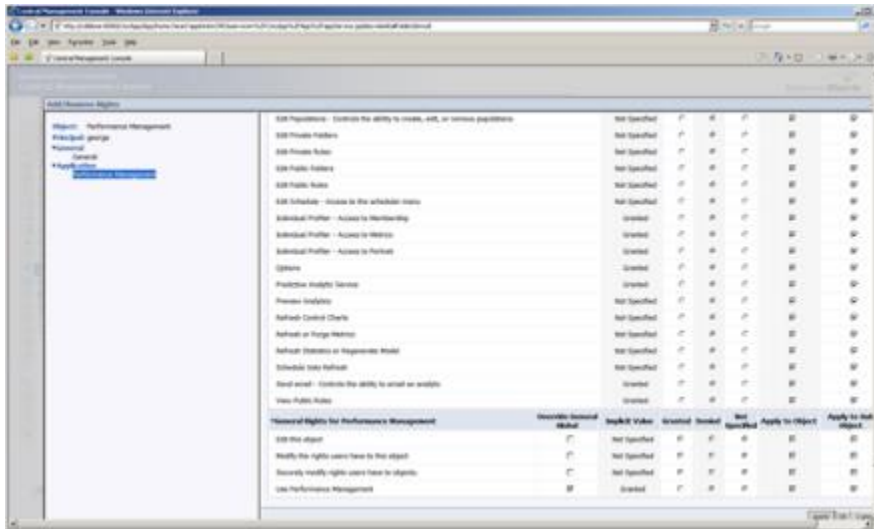


- Right-click **Performance Management**.



- Choose a group and click **Assign Security**.

- Click the Advanced tab, and then click **add/remove rights**.



- Clear all options, including **Use Performance Management**.
- Click **Apply** and then click **OK** to save your entries.

## Use a Non-Standard Web Server Port

If the port specified for the Tomcat server is already in use, you cannot log in to InfoView. You must reconfigure the Tomcat server by changing the port number in ...\\Tomcat\\conf\\server.xml under the Connector tag and restart the Apache Tomcat service.

**To avoid this issue, follow these steps:**

1. Open a Command Prompt and enter the following:

```
netstat -a > netstat.txt
```

This displays an **etstat.txt** text file in the current directory that contains, among other information, a list of the port numbers that are currently in use.

2. Open this text file and search for **8080**.
3. If **8080** is already in use, insert a unique number and use that port number, instead of 8080, throughout this section.

## Set Templates for Web Intelligence

You must change the template for WebI when there is a new document. This is not an option for existing documents. The Maconomy standards are implemented in the defaultConfig.xml released file.

To set templates for WebI, follow these steps:

1. Make a backup copy of the **AnalyticalReporting.war** file from (default) **C:\Program Files\Business Objects\BusinessObjects Enterprise 12.0\java\applications**.
2. Open the **AnalyticalReporting.war** file and replace the three versions of **defaultConfig.xml** with the changed versions. Note the original paths:
  - webApplet\AppletConfig\defaultConfig.xml
  - webApplet\AppletConfig\AppletConfig\defaultConfig.xml
  - WEB-INF\classes\defaultConfig.xml
3. From services, **Stop tomcat**.
4. From a command-line prompt, change the current directory to **C:\Program Files\Business Objects\deployment**.
5. Enter the command **wdeploy tomcat55 predeployall**.
6. If no errors are displayed, enter the command **wdeploy tomcat55 deployall**.
7. From services, **Start tomcat**.
8. Create a WebI document to check the template's performance.
9. Restart the server if necessary.

## Enabling Cache and Pre-Load of Cache in ETL

Enabling cache on ETL effectively improves the load speed of both incremental and full loads in the data warehouse. It stores the values of keys that had been looked up at least once and returns these values the next time that these are looked up again. This reduces the need to do a database call every time a lookup step is processed.



**Note:** Cache uses memory to store the looked-up key, and you risk **running out of memory** when it is enabled on very large tables.

You can enable cache:

- Manually
- Using an SQL Script

### Enable Caching Manually

To enable caching manually, follow these steps:

1. Open the transformations that contain dimensional  or database lookup  steps.
  2. Right-click the lookup step and select **Edit Step** or double click it.
  3. Select the **Enable the cache?** check box.
-



4. If **Pre-load the cache?** is enabled, select it as well. This check box is disabled if the **Update the dimension?** check box is selected.
5. Set **Cache size in rows** to **0** to enable caching of all rows.
6. Click **OK** to apply changes.
7. Apply these changes to all other lookup steps except **Pre-load the cache?** on **TASK\_ID** because this is typically a very large table and will result in an out of memory error. Set **Cache size in rows** to **1** for this lookup and then append **ORDER BY TASK\_LIST, TASK\_NAME** on the SQL statement of the Table Input step. TASK\_ID lookup step is present on the following transformations:
  - Job Entry
  - Purchase Order Line
  - Job Invoice Line
  - Budget Entry
  - Finance Entry
  - Job Budget Line

## Enable Caching Using an SQL Script

Another way to enable the cache and pre-load the cache is by using an SQL script.

**To enable caching using an SQL script, complete the following steps:**

1. Log in to the database repository for your ETL and run the following SQL statements.

```
-- enables cache for Dimensional Lookup steps except TASK_ID
UPDATE R_STEP_ATTRIBUTE
SET VALUE_NUM = 0, VALUE_STR = NULL
WHERE ID_STEP_ATTRIBUTE IN (
SELECT ID_STEP_ATTRIBUTE
FROM R_STEP_ATTRIBUTE
WHERE ID_STEP IN (
SELECT ID_STEP
FROM R_STEP
WHERE ID_STEP_TYPE IN
(SELECT ID_STEP_TYPE
FROM R_STEP_TYPE
WHERE CODE IN ('DimensionLookup')) AND
NAME <> 'TASK_ID') AND
CODE IN ('cache_size')
);
--enables pre-load cache for Dimensional Lookups except TASK_ID
UPDATE R_STEP_ATTRIBUTE
SET VALUE_STR = 'Y'
WHERE ID_STEP_ATTRIBUTE IN (
SELECT ID_STEP_ATTRIBUTE
FROM R_STEP_ATTRIBUTE
WHERE ID_STEP IN (
SELECT ID_STEP
FROM R_STEP
WHERE ID_STEP_TYPE IN
(SELECT ID_STEP_TYPE
FROM R_STEP_TYPE
WHERE CODE IN ('DimensionLookup')) AND
NAME <> 'TASK_ID') AND
CODE IN ('preload_cache')
);
--set cache-size to 1 for Dimensional Lookup TASK_ID
UPDATE R_STEP_ATTRIBUTE
SET VALUE_NUM = 1, VALUE_STR = NULL
WHERE ID_STEP_ATTRIBUTE IN (
SELECT ID_STEP_ATTRIBUTE
FROM R_STEP_ATTRIBUTE
WHERE ID_STEP IN (
SELECT ID_STEP
FROM R_STEP
WHERE ID_STEP_TYPE IN
(SELECT ID_STEP_TYPE
FROM R_STEP_TYPE
WHERE CODE IN ('DimensionLookup')) AND
NAME = 'TASK_ID') AND
CODE IN ('cache_size')
);
--disables pre-load cache for TASK_ID Dimensional Lookup steps
UPDATE R_STEP_ATTRIBUTE
SET VALUE_NUM = 0, VALUE_STR = 'N'
WHERE ID_STEP_ATTRIBUTE IN (
SELECT ID_STEP_ATTRIBUTE
```

---

```

FROM R_STEP_ATTRIBUTE
WHERE ID_STEP IN (
SELECT ID_STEP
  FROM R_STEP
 WHERE ID_STEP_TYPE IN
    (SELECT ID_STEP_TYPE
      FROM R_STEP_TYPE
     WHERE CODE IN ('DimensionLookup')) AND
    NAME = 'TASK_ID') AND
    CODE IN ('preload_cache')
);
--enables cache for Database Lookup Steps (VALUE_STR = 'Y')
UPDATE R_STEP_ATTRIBUTE
SET VALUE_STR = 'Y'
WHERE ID_STEP_ATTRIBUTE IN (
SELECT ID_STEP_ATTRIBUTE
FROM R_STEP_ATTRIBUTE
WHERE ID_STEP IN (
SELECT ID_STEP
  FROM R_STEP
 WHERE ID_STEP_TYPE IN
    (SELECT ID_STEP_TYPE
      FROM R_STEP_TYPE
     WHERE CODE IN ('DBLookup')))) AND
    CODE IN ('cache')
);
--set cache size to 0 for Database Lookup Steps (VALUE_NUM = 0)
UPDATE R_STEP_ATTRIBUTE
SET VALUE_NUM = 0, VALUE_STR = NULL
WHERE ID_STEP_ATTRIBUTE IN (
SELECT ID_STEP_ATTRIBUTE
FROM R_STEP_ATTRIBUTE
WHERE ID_STEP IN (
SELECT ID_STEP
  FROM R_STEP
 WHERE ID_STEP_TYPE IN
    (SELECT ID_STEP_TYPE
      FROM R_STEP_TYPE
     WHERE CODE IN ('DBLookup')))) AND
    CODE IN ('cache_size')
);
COMMIT;

```

After running the provided SQL statement, commit the changes. Then you must manually update transformations that contain TASK\_ID (see step 7 on how manually enable cache.)

## Servers with Low Memory (RAM)

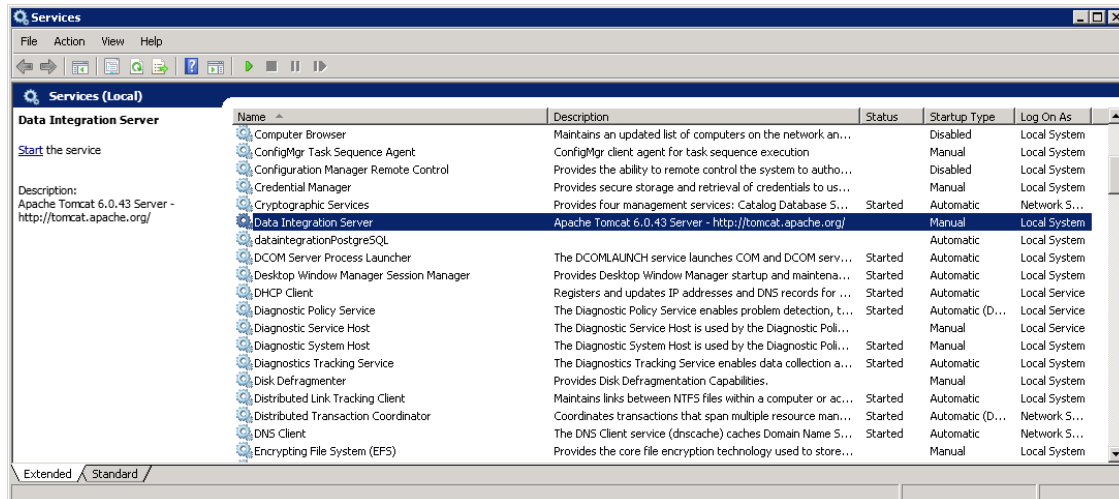
Pentaho Data Integration 5.4 has a high memory consumption. This is due to Pentaho Data Integration 5.4 installation, as well as installing Tomcat 6 as a necessary component to run the Data Integration Server. However, it consumes a steadily increasing amount of memory, which could be detrimental to systems with low memory.

Data Integration Server is mainly used for scheduling, execution, security, and content management. Since Deltek currently uses a different method of scheduling ETL loads, you can disable it.

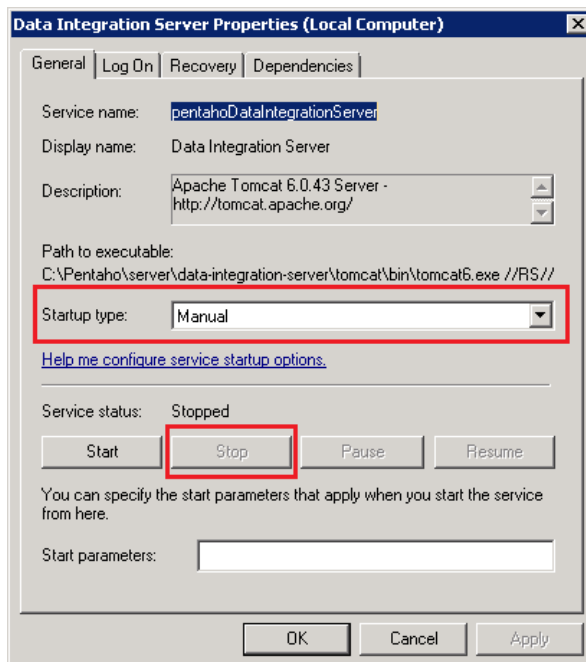
**Note:** This process is optional and is only necessary for servers with low memory (RAM).

**To disable Data Integration Server, complete the following steps:**

1. Click **Start**, then type *Services.msc*.
2. The Services window is displayed. Locate a service called **Data Integration Server**.



3. Right-click and select **Properties**. The Date Integration Server Properties dialog is displayed.
4. In the **Startup type** field, change the selection to **Manual** so that the service does not run automatically when you restart the system.



5. Click **Stop** to disable the service, then **OK**.

## Burst Publishing

Burst Publishing is the ability to schedule documents to refresh and then automatically distribute them out to receivers. The main benefit is that the recipients (Maconomy users) can get the refreshed documents automatically in their in boxes, and that the documents are only run once.

For information about how to set up burst publishing of documents in SAP BusinessObjects, see <http://scn.sap.com/docs/DOC-56056>

---

## Materialized Views on Oracle

A materialized view on Oracle is a database view that is stored physically and provides a view on which indexes and keys can be defined. BPM Reporting uses one materialized view in the Job Information universe because the Maconomy transaction database lacks a table that combines job entries (JobEntry) with corresponding invoice lines (JobInvoiceLine).

This section describes how materialized views on Oracle work and how to manage them.

### JobEntryJobInvoiceLinePV

The materialized view that is used in BPM Reporting is called JobEntryJobInvoiceLinePV. It consists of the following elements:

- Two view logs, one on JobEntry and one on JobInvoiceLine
- Materialized view JobEntryJobInvoiceLinePV
- EX view EXJobEntryJobInvoiceLinePV

When records change in the JobEntry table, the changes are recorded in the view log. Similarly, if records are inserted or deleted, changes are recorded in the JobInvoiceLine table.

### The Materialized View

The materialized view is set to update on commit. This means that when a transaction changes, inserts, or deletes records in JobEntry or JobInvoiceLine, the changes that are recorded in the view logs are transferred as changes that update the materialized view. The view is designed to perform a fast refresh because only delta changes are considered; it is not the whole view that is updated. In addition, the view does not use the query rewrite mechanism in Oracle.

### The EX View

The EX view is a database view that is on top of the materialized view. The EX view provides meaningful values for pop-up numbers (enumerated data types) and date values of data types (in addition to the string format).

For technical reasons, the date definitions are done in the materialized views, and only pop-up value fields are handled in the EX views (in other EX views, date fields are also handled in the EX views).

### Explain the View Definition

This section provides the view definition file and explains what each statement does.

---

## Materialized Views on Oracle

Statement/Section	Definition
ALTER SYSTEM SET "_mv_refresh_use_stats =TRUE"	This statement tells Oracle to use statistics when refreshing materialized views.
CREATE MATERIALIZED VIEW LOG ON JOBENTRY	This statement creates the view log on JobEntry.
WITH ROWID	The reference of ROWID is important because it is used for unique identification.
INCLUDING NEW VALUES;  CREATE MATERIALIZED VIEW JOBENTRYJOBINVOICELINEPV	This statement creates the actual materialized view.
REFRESH ON COMMIT AS	This is the definition of "refresh on commit."
SELECT	This statement starts the select statement that defines the view.
-- Technical fields JOBENTRY.ROWID JOBENTRYROWID	Both parts of the union that make the select statement use the ROWID internally for unique identification.
,NULL JOBINVOICELINEROWID ,1 MARKER	This field is used to distinguish the upper and lower union parts.
-- Shared Dimensions ,JOBENTRY.INSTANCEKEY	This starts the field list.
CREATE VIEW EXJOBENTRYJOBINVOICELINEPV AS : SELECT INSTANCEKEY ,JOBNUMBER ,ENTRYNUMBER	This defines the EX view on the materialized view.

## Check the Materialized View

Use the following select statements to check the view.

```
SELECT MVIEW_NAME, REFRESH_MODE, REFRESH_METHOD, LAST_REFRESH_TYPE, LAST_REFRESH_DATE
FROM USER_MVIEWS;
```

This lists a record for the materialized view that is defined. The **last\_refresh\_date** provides the date when the view was last refreshed, and the other fields indicate how it was refreshed.

```
SELECT LOG_OWNER, MASTER, LOG_TABLE FROM DBA_MVIEW_LOGS;
```

This lists two records, one for each view log.

```
SELECT COUNT(*) FROM MLOG$_JOBENTRY;
SELECT COUNT(*) FROM MLOG$_JOBINVOICELINE;
```

These statements display the number of changes currently recorded in the view logs. Under normal circumstances, they should display zero. If they do not, it is because they currently store changes that are not transferred to the materialized view.

If it appears that the preceding tables are not emptied at any time, it can be because the materialized view is not able to empty them as it should. One reason can be that more than the two view logs have been installed, but without the corresponding materialized views to empty them.

**To check that `_mv_refresh_use_stats` system parameter is set up, use the following command:**

```
SHOW PARAMETER _mv_refresh_use_stats;
```

It should display the following.

NAME	TYPE	VALUE
<code>_mv_refresh_use_stats</code>	boolean	TRUE

If no data is displayed, the parameter is not set up.

## Flush the Shared Pool

Over time, SQL statements for updating the materialized view compile in the shared pool. This is a known issue in Oracle and requires that you empty the shared pool. A stored procedure has been developed for flushing the shared pool every night.

**Tip:** See [Performance Views](#) for instructions on how to install the stored procedure.

To check that the flushing procedure runs as expected, execute the following command. FAILED should be zero and BROKEN should be "N."

```
select job, what, last_date, next_date, failures, broken from dba_jobs where what like '%maconomy_flush_shared_pool%';
```

To check that the flushing procedure cleaned the shared pool, execute the following command. If it is successful, it should return no entries.

```
SELECT sql_text FROM v$sql WHERE sql_text LIKE '/* MV_REFRESH%';
```

## Handling Issues

If the Maconomy database performs poorly, it may be because of an incorrect installation of the materialized view.

**To resolve this issue, follow these steps:**

1. Run the select statements mentioned in [Check the Materialized View](#). Check the results to find out whether the view is updated at all, and whether it is refreshed quickly.
  2. Run the select statements mentioned in [Flush the Shared Pool](#) to find out whether the stored procedure is not flushing correctly and how many entries there are in the shared pool.
  3. Drop the view. Use the drop statements of the view definition file. Start with dropping the actual materialized view and then drop the view logs. There is no need to drop the indexes.
  4. Apply the view again and check its installation.
  5. Install the flushing mechanism again and check its installation.
-



# Troubleshooting

## Determine BPM Version and Solution

The internal version number, the external version number, and the solution appear in universes and documents of a BPM release. In universes, the version numbers and solution are stated as custom properties of the data foundations (DFX files). In documents, they are stated in variables.

The format of internal version numbers is:

```
<version>.<sub-version>.<service pack>.<fix pack>
```

For example: 17.0.102.0

## Problem with Login to Infoview through the Portal

You cannot log in to BusinessObjects in the Portal using Internet Explorer (IE). The Login screen is displayed, but nothing happens when you try to log in (you stay on the same page). Instead, you can log in directly in **infoview**.

The reports are embedded into the Maconomy Portal using IFrame. IE gives a lower level of trust to IFRAME pages (IE calls this "third-party" content). If the page inside the IFRAME does not have a Privacy Policy, its cookies are blocked. This is indicated by the eye icon in the status bar. When you click this icon, it lists the blocked URLs. The cookies are used to store the BusinessObjects session. Because the session cannot be saved, the user cannot log in.

**To resolve the login problem, follow these steps:**

1. Create a folder named **w3c** in [Business Objects] \Tomcat55\webapps\
2. Create a file called **p3p.xml** in the same folder with the following code:

```
<META>
  <POLICY-REFERENCES>
    <POLICY-REF about="/w3c/policy.xml">
      <INCLUDE>/</INCLUDE>
    <COOKIE-INCLUDE/>
  </POLICY-REF>
</POLICY-REFERENCES>
</META>
```

**Note:** This procedure does not work when you use an IP instead of a server name in the OpenDocument link.



---

## About Deltek

Better software means better projects. Deltek is the leading global provider of enterprise software and information solutions for project-based businesses. More than 23,000 organizations and millions of users in over 80 countries around the world rely on Deltek for superior levels of project intelligence, management and collaboration. Our industry-focused expertise powers project success by helping firms achieve performance that maximizes productivity and revenue. [www.deltek.com](http://www.deltek.com)