


Deltek Maconomy[®] 2.6.1

Installation Guide

For Standard and PSO Installations

November 25, 2022



While Deltek has attempted to verify that the information in this document is accurate and complete, some typographical or technical errors may exist. The recipient of this document is solely responsible for all decisions relating to or use of the information provided herein.

The information contained in this publication is effective as of the publication date below and is subject to change without notice.

This publication contains proprietary information that is protected by copyright. All rights are reserved. No part of this document may be reproduced or transmitted in any form or by any means, electronic or mechanical, or translated into another language, without the prior written consent of Deltek, Inc.

This edition published November 2022.

© Deltek, Inc.

Deltek's software is also protected by copyright law and constitutes valuable confidential and proprietary information of Deltek, Inc. and its licensors. The Deltek software, and all related documentation, is provided for use only in accordance with the terms of the license agreement. Unauthorized reproduction or distribution of the program or any portion thereof could result in severe civil or criminal penalties.

All trademarks are the property of their respective owners.

Contents

Overview	1
Pre-Installation	2
Workflow	2
Before You Begin	2
Prerequisites.....	2
Note on Folder Hierarchy	2
Standard Installation	4
Application Configuration.....	4
Database Setup.....	5
Web Products Setup.....	6
PSO Installation	11
Application Configuration.....	11
Database Setup.....	12
Web Products Setup.....	13
Web Server Configuration.....	18
Setup Using IIS.....	18
Setup Using Apache.....	22
Testing the Web Products	23
Analyzer Reports.....	24
Glossary	25

Overview

Welcome to the Deltek Maconomy Installation Guide. This guide contains step by step procedures for installing standard Maconomy, as well as Maconomy with the PSO Solution. Please see the related section for your needed install.

Pre-Installation

This section details the standard installation process for Maconomy, which includes prerequisite steps, and then steps within MConfig and then, depending on your choice of web server software, either within IIS or within Apache.

Attention: These instructions are a generic example of the installation procedure. Keep in mind that the versions you might see in the screenshots differ from the current version released.

Workflow

The overall workflow includes:

- Application configuration (either Standard or PSO)
 - Selecting packing units
 - Database setup
 - Web products setup
- Web server configuration (Apache or IIS)

Before You Begin

Ensure that you have received your onboarding information from your Deltek sales representative, with needed information such as registration numbers and initial password. Keep this information at hand for reference during the installation process, either Standard installation or PSO installation.

Open the default Maconomy folder on your desktop for easy reference, as this path is used on numerous occasions throughout this process.

Note: The Coupling Service is now automatically installed for applications of version 2.3 GA and higher.

Prerequisites

1. Download the latest Maconomy Packing Units (PUs) for application (APU), technology (TPU), and solution (SPU) and place them in one folder (usually C:\PUs).
2. Download the latest released MConfig version and place it in the same folder as the downloaded PUs.

Note on Folder Hierarchy

Throughout the document there are references to certain folders containing the data for Maconomy. As an example, a diagram is provided below:

```
C:\
- "PUs"
- "Maconomy"
  ○ <Application folder>
    ▪ CouplingService
```

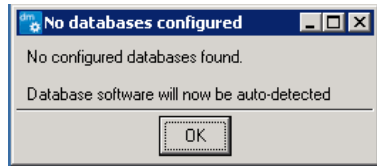
- **“WebServers”**
 - **<Web products folder>** (*with the same name as <App folder>*)
 - **“Cgi-bin”**
 - **“Htdocs” (or “wwwroot”)**

Standard Installation

Application Configuration

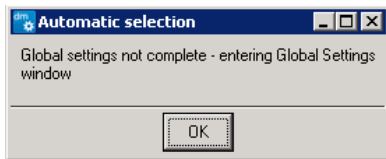
1. Right-click the MConfig executable and select **Run as administrator**.

Note: system. During the first run you are prompted for initial setup. MConfig attempts to detect if the database software is installed.



The database must be one of the supported Oracle or Microsoft SQL Server versions.

2. After the database detection, you will receive 1-2 informational prompts, depending on whether or not PUs are found in the default location. Accept the default selections on these prompts.
3. At the prompt to enter Global settings for MConfig, click **OK**.



4. In the Configure Global Parameters window, enter the paths for Maconomy and PUs. Click **OK**.
5. If any of the specified folders are new, you are prompted to approve their creation. Accept the default selections on the prompts.

Once the folders are accessed or created, MConfig opens.

6. In the MConfig Main Window, double-click on the application (APU) to install.

The Application Instance New Configuration window displays.

7. Modify only the following fields:
 - **Database environment** — Choose the database server to use for the Maconomy system (such as SQL Server or Oracle. The steps are the same for either.)
 - **Application instance name** — Enter a name for this application. This is a free text field, and the name could be based on version or purpose of the system. ex. w_20_0.sp100. This is what the rest of the document will be referring to as the Application name. The **Application folder**, containing the files for the system, will also have this name. Consult the notes on folder on hierarchy in the beginning of this document.
 - **Enterprise language** — For standard systems, select **en_US**.
 - **Server user language** — Select the language used in the Enterprise language field.
 - **TPU** — Select the TPU to install (for a new install, select the latest).
8. Click **OK** to save and return to the main window.

Note: You can fill out the registration, installation, and control numbers while on this screen if you choose. However, you will have an opportunity to complete this later in the installation.

9. In the Main window, click **Next**. The Installing window displays. Click **Next** again to proceed with the installation.

Note: During the installation, MConfig might ask for the password of MACONOMY or Administrator. Please provide them.

10. If you are using SQL Server, a password prompt appears. Enter the password and click **OK**.
11. Once the installation is complete, a message displays. Click **OK**. The Main window displays.
12. In the Main window, the system that you designated in step 8 **Application instance name** now displays in a list as an application name. Double-click on this application name. The Application instance configuration window displays.

This portion is complete. Next, set up the database.

Database Setup

1. In the Application Instance Configuration window, add a new database. Next to the **Shortname** field, click **Add**.
2. The **Application Shortname** window displays. In this window, complete the following fields:
 - **Company shortname** — Enter the name for the new database. The convention is to use the version number and Service Pack number of the PUs installed.

For example, enter *en20p100* where:

en is the language

20 is the version number

p100 is the Service Pack number

Attention: You can use up to 8 alpha-numeric characters. No special characters or upper case letters are allowed.

- **Company name** — Enter the company name as a combination of name and registration number. You receive this information from your Deltek sales representative.
 - **Load shortname data** — For standard installation, select **Setup data**.
3. If BPM reports are required, select the following check boxes under Business Performance Management. If not, skip to step 4.
 - Enable Reporting
 - Enable Business Intelligence
 - Enable transaction time stamps
 4. Click **OK** to save changes and return to the **Application Configuration** window. In the Application Instance Configuration window, complete these fields.
 - **Registration number** — Enter the registration number that you received from your Deltek sales representative.

- **Installation number** — Enter the installation number that you received from your Deltek sales representative.
 - **Control number** — Enter the control number that you received from your Deltek sales representative.
5. Click **OK**. The Main window displays. Click **Next**. The Installing window displays. Verify the information, and then click **Next**. The installation commences.

Note: During the installation, MConfig might prompt for a password. Enter the one you were provided by Deltek via your onboarding email.

6. Once the installation has completed, click **OK** to return to the Main window.

Next, set up Web Products.

Web Products Setup

1. The application instance name you entered in the initial steps now appears in the Applications section of the Main window. Double-click on the application you have installed.

The Application Instance Configuration window displays.

2. In the Application Instance Configuration window, click **Web Products**.

The Web Server Selection window displays.

3. In the Web Server Selection window, click **Add** to create a web products configuration.

The Install New Web Server window displays.

4. In the **Descriptive name** field, enter the Application Name specified in the Application Instance Configuration window.

Note: You can also copy and paste this name from the Application folder. This folder is found under the Maconomy folder, which is the one specified in the Configure Global Parameters window as the default Maconomy “home” folder. The default is **C:\Maconomy**, when you first open MConfig to install Maconomy. Check the notes on the folder hierarchy in the start of this manual.

Select the **Use local machine** check box to specify that the web products will be installed in the local server. Click **OK**.

You will then be redirected back to the **Web server selection** window. You will now see your newly created web products instance in the list. Select it and click **Choose**.

5. A prompt appears indicating that you must configure the web server. Click **OK**. The Web Server Parameters window displays.
6. In the Web Server Parameters window, enter the path for the web products directory into the **Webserver home (root) directory** field, as follows:
 - a) Go into the default Maconomy folder and locate the directory **WebServers**.

Note: This folder should be auto-created in the previous step. If not, create a WebServers folder manually in the Maconomy folder.

- b) Open the WebServers folder.
- c) Click **New folder** to create a folder within WebServers.
- d) To name the new folder, copy the name of the application or web products instance (they should be the same, if you have followed the standards of this guide). You can copy the name of the application from the folder in C:\Maconomy. Or get the name of the web products instance from one of the previously accessed windows in MConfig. You can then paste that into the name of the newly-created folder.
- e) Inside the new folder, create two additional folders.

If you are using IIS, use the names:

- wwwroot
- cgi-bin

If you are using Apache, use the names:

- htdocs
- cgi-bin

- f) Copy the path of the directory created in Step d.



Paste this path into the **Webserver home (root) directory** field, in the **Web server parameters** window you have opened in MConfig:

C:\maconomy\webservers\applicationname

- g) Click **Use webserver home as base for other directories** to populate all the information needed in the other fields.

The fields on the screen populate with related information.

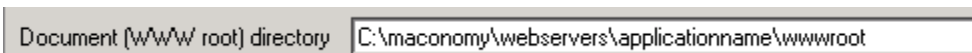
7. If you are using IIS, you must update one field as follows. If you are using Apache, skip this step.

In the **Document (WWW root) directory** field, edit the final string on the path.

from *htdocs*



to *wwwroot*



8. Update the **Webserver URL (host and port)** field with the correct IP address (host) of the computer, and port of the computer.

To find the correct IP (host) address, do the following:

- a) Click **Start > Run > cmd**.
- b) In the command line, type:

ip config /all | find "IP"

and click **Enter**. The IP (host) address of the machine displays.

```
D:\maconony\w_17_0.sysid14\MacononyDir\Database>ipconfig /all | find "IP"
Windows IP Configuration
IP Routing Enabled. . . . . No
IPv4 Address. . . . . 172.16.1.150(Preferred)
IPv6 Address. . . . . 2001:0:9d38:6:1456:392c:53ef:fe69(Preferred)
Link-local IPv6 Address . . . . . fe80::1456:392c:53ef:fe69%15(Preferred)
D:\maconony\w_17_0.sysid14\MacononyDir\Database>
```

- c) Keep this address and display handy.
- d) In the **Webserver URL (host and post)** field, delete the end of the default entry path, leaving only *http://*

Webserver URL (host and port) *http://*

- e) Type in the IP address you found earlier. You must now add the port address to this line.
- f) In the same command line interface, type **netstat -an | find "200"** and hit **Enter**. A list of ports in use displays. The first available port is an unlisted number where there is a break in the sequence of the listed numbers.

Note: For your initial installation, use port **20000**.

In the following example, the sequence breaks after 20012, so you would enter the port number as 20013.

```
D:\maconony\w_17_0.sysid14\MacononyDir\Database>netstat -an | find "200"
TCP 0.0.0.0:20000 0.0.0.0:0 LISTENING
TCP 0.0.0.0:20001 0.0.0.0:0 LISTENING
TCP 0.0.0.0:20002 0.0.0.0:0 LISTENING
TCP 0.0.0.0:20003 0.0.0.0:0 LISTENING
TCP 0.0.0.0:20004 0.0.0.0:0 LISTENING
TCP 0.0.0.0:20005 0.0.0.0:0 LISTENING
TCP 0.0.0.0:20006 0.0.0.0:0 LISTENING
TCP 0.0.0.0:20007 0.0.0.0:0 LISTENING
TCP 0.0.0.0:20008 0.0.0.0:0 LISTENING
TCP 0.0.0.0:20009 0.0.0.0:0 LISTENING
TCP 0.0.0.0:20010 0.0.0.0:0 LISTENING
TCP 0.0.0.0:20011 0.0.0.0:0 LISTENING
TCP 0.0.0.0:20012 0.0.0.0:0 LISTENING
TCP 0.0.0.0:20021 0.0.0.0:0 LISTENING
TCP 0.0.0.0:20024 0.0.0.0:0 LISTENING
TCP 0.0.0.0:20027 0.0.0.0:0 LISTENING
```

- g) In the **Webserver URL (host and post)** field, enter a colon (:), the port number, and a forward slash (/).

• Ex: **http://172.16.1.150:20013/**

Webserver URL (host and port) *http://172.16.1.150:20013/*

In the end, the window will look something like this:

Web Server parameters for applicationname

Use Web server as template: Select a Web server home or specify one below ▼

Webserver home (root) directory: C:\maconomy\webservers\applicationname

Use Webserver home as base for other directories

Document (WWW root) directory: C:\maconomy\webservers\applicationname\htdocs

Physical cgi-bin directory: C:\maconomy\webservers\applicationname\cgi-bin\Maconomy

Virtual cgi-bin directory: cgi-bin/Maconomy

Temporary directory: C:\maconomy\webservers\applicationname\Maconomy\Temp

Update site directory: C:\maconomy\webservers\applicationname\Maconomy\UpdateSite

Portal source directory: C:\maconomy\webservers\applicationname\MaconomyPortal

Maconomy client type: Auto Choice ▼

Maconomy home directory: C:\maconomy

MScript source directory: C:\maconomy\webservers\applicationname\MaconomyMScript

Web Services source directory: C:\maconomy\webservers\applicationname\MaconomyWS

Java Client directory: C:\maconomy\webservers\applicationname\htdocs\Maconomy\Jacc

Java Client help directory: C:\maconomy\webservers\applicationname\htdocs\Maconomy\Jacc

DPU (Java Client help framework): No DPU selected ▼

Webserver URL (host and port): http://172.16.1.150:20013/

Parameters were changed to values from web server Select a Web server home or specify one below

Buttons: Cancel to top, Cancel, Validate, OK

h) Click **OK**.

The Web Products window is displayed.

9. In the Web Products window, do the following:
 - a) Check that the **Web TPU** fields match the TPU specified in the request.
 - b) Select the following check boxes:
 - MScript
 - Web Services
10. In the drop-down fields where **Install unconditionally** is an option, select **Install unconditionally**.
11. If languages are required, in the **Languages** field, choose the languages to install. Otherwise, skip this step.
12. Click **OK**, then click **OK** on the Web Server Selection window, and click **OK** on the Application Instance Configuration window.
13. The Main window displays. Click **Next**. The Installing (pending changes) window displays. Click **Next**.
14. Once the installation completes, click **OK** to return to the Main window.
15. In the Main window, click **Quit** to exit MConfig.

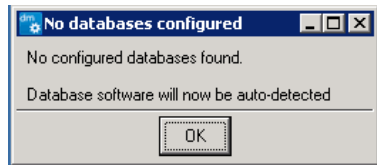
16. To set up the web server for the web products, see the Set up web server section at the end of the manual.

PSO Installation

Application Configuration

1. Right-click the MConfig executable file and select **Run as administrator**.

Note: The Maconomy system cannot be installed before there is a working database on the system. During the first run, you are prompted for initial setup. MConfig attempts to autodetect if the database software is installed.



The database must be one of the supported Oracle or Microsoft SQL Server versions.

2. After the database detection, you will receive 1-2 informational prompts, depending on whether or not PUs are found in the default location. Accept the default selections on these prompts.
3. At the prompt to enter Global settings for MConfig, click **OK**.
4. In the Configure Global Parameters window, enter the paths for Maconomy and PUs.
5. Click **OK**.
6. If any of the specified folders are new, you are prompted to approve their automatic creation. Accept the default selections on the prompts.

Once the folders are accessed or created, MConfig opens automatically.

7. In the MConfig Main Window, double-click on the application (APU) to install.

The Application Instance New Configuration window displays.

8. Modify only the following fields:
 - **Database environment** — Choose the database server to use for the Maconomy system (such as SQL Server or Oracle. The steps are the same for either.)
 - **Application instance name** — Enter a name for this application. This is a free text field, and the name could be based on version or purpose of the system. For example, w_20_0.sp100.pso. This is what we will refer to in the rest of the document as the Application name. The **Application folder**, containing the files for the system, will also have this name. Consult the notes on folder on hierarchy in the beginning of this document as needed.
 - **Enterprise language** — For PSO systems, select **en_US_MCS**.
 - **Server user language** — Select the language used in the **Enterprise language** field.
 - **TPU** — Select the TPU to install (for a new install, select the latest).
 - **SPU** — Select the SPU to install (for a new install, select the latest) with PSO (pso) in the name.
 - **Solution** — Select **Prepare for MCS solution** or **Prepare for CPA solution**.
9. Click **OK** to save and return to the main window.

Note: You can fill out the registration, installation, and control numbers while on this screen if you choose. However, you will have an opportunity to complete this later in the installation.

10. In the Main window, click **Next**. The Installing window displays. Click **Next** again to proceed with the installation.

Note: During the installation, MConfig might ask for the password of MACONOMY or Administrator.

11. If you are using SQL Server, a password prompt appears. Enter the required password and click **OK**.
12. Once the installation is complete, a message box is displayed. Click **OK**. The Main window displays.
13. In the Main window, the system that you designated as **Application instance name** in step 8 now displays in a list as an application name. Double-click on this application name. The Application instance configuration window displays.
This portion is complete. Next, set up the database.

Database Setup

To set up the database, follow these steps.

1. In the Application Instance Configuration window, add an additional database. Next to the **Shortname** field, click **Add**.
2. The **Application Shortname** window displays. In this window, complete the following fields:
 - **Company shortname** — Enter the name for the new database. The convention is to use is the company name and/or indication of whether it is a production/test/UAT system. For example, enter *xyzprod* for company XYZ's production database. Or enter the version number and Service Pack number of the PUs installed.

For example, enter *en20p100* where:

en is the language
20 is the version number
p100 is the Service Pack number

Attention: You can use up to 8 alpha-numeric characters. No special characters or upper case letters are allowed.

- **Company name** — Enter the company name as a combination of name and registration number. You receive this information from your Deltak sales representative.
- **Business Performance Management** — Select all of the check boxes in this section, including:
 - Enable Reporting
 - Enable Business Intelligence

- Enable transaction time stamps
 - Create performance views
 - **Load shortname data** — For PSO installation, select **Solution Setup Data**.
 - **Data Configuration Options** — Select the appropriate country configuration. This should match the selected Enterprise Language for the application (see above), such as **US System**, and the industry accelerator **IA PSO Extensions**. Click **OK**.
- Note:** This option determines which set of data files will be used with different setup of tax, payment modes, and so on.
3. Click **OK** to save changes and return to the Application Instance Configuration window.
 4. In the Application Instance Configuration window, complete these fields.
 - **Registration number** — Enter the registration number that you received from your Deltek sales representative.
 - **Installation number** — Enter the installation number that you received from your Deltek sales representative.
 - **Control number** — Enter the control number that you received from your Deltek sales representative.
 5. Click **OK**. The Main window displays. Click **Next**. The Installing window displays. Verify the information, and then click **Next**, again. The installation continues.

Note: During the installation, MConfig might prompt for a password. Enter **MACONOMY** or **Administrator**, as you were provided by Deltek via your onboarding email.

6. Once the installation has completed, click **OK** to return to the Main window.

Next, set up Web Products.

Web Products Setup

1. The application instance name you entered in the initial steps now appears in the applications section of the Main window. Double-click on the application you have installed.

The Application Instance Configuration window displays.
2. In the Application Instance Configuration window, click **Web Products**.

The Web Server Selection window displays.
3. In the Web Server Selection window, click **Add** to create a web products instance.

The Install New Web Server window displays.
4. In the **Descriptive name** field, enter the Application Name specified in the Application Instance Configuration window.

Note: You can also copy and paste this name from the Application folder. This folder is found under the Maconomy folder, which is the one specified in the Configure Global Parameters window as the default Maconomy home folder. The default is **C:\Maconomy**, when you first open MConfig to install Maconomy. Check the notes on the folder hierarchy in the start of this manual.<Replace text>

5. Select the **Use local machine** check box to specify that the web products will be installed in the local server. Click **OK**.

You will now be redirected to the Web server selection window. Double-click the entry that you have just created. (Or just click it and then select **Choose**).

6. A prompt appears indicating that you must configure the web server. Click **OK**. The Web Server Parameters window is now displayed.
7. In the Web Server Parameters window, enter the path for the web products directory into the **Webserver home (root) directory** field, as follows:

- a) Go into the default Maconomy folder and locate the directory **WebServers**.
- b) Open the WebServers folder.

Note: This folder should be auto-created in the previous step. If not, create a WebServers folder manually under the default Maconomy folder.

- c) Click **New folder** to create a folder within WebServers.
- d) To name the new folder, copy the name of the application or web products instance (they are the same). You can copy the name of the application from the folder in C:\Maconomy. Or get the name of the web products instance from one of the previously accessed windows in MConfig. You can then paste that into the name of the newly-created folder.
- e) Inside the new folder, create two additional folders.

If you are using IIS, use the names:

- wwwroot
- cgi-bin

If you are using Apache, use the names:

- htdocs
- cgi-bin

- f) Copy the path of the directory created in Step d.



Paste this path into the **Webserver home (root) directory** field, in the **Web server parameters** you have opened in MConfig:

Click **Use webserver home as base for other directories** to populate all the information needed in the other fields.

The fields on the screen populate with related information.

8. If you are using IIS, you must update one field, as follows. If you are using Apache, skip this step. In the **Document (WWW root) directory** field, edit the final string on the path:

from *htdocs*

Document (WWW root) directory C:\maconomy\webservers\applicationname\htdocs

to *wwwroot*

Document (WWW root) directory C:\maconomy\webservers\applicationname\wwwroot

9. Update the **Webserver URL (host and port)** field with the correct IP address (host) of the computer, and port of the computer.

To find the correct IP (host) address, do the following:

- Click **Start > Run > cmd**.
- In the command line, type:

ip config /all | find "IP"

and hit **Enter**. The IP (host) address of the machine displays.

```
D:\maconomy\w_17_0.sysid14\MaconomyDir\Database>ipconfig /all | find "IP"
Windows IP Configuration
IP Routing Enabled. . . . . No
IPv4 Address. . . . . 172.16.1.150(Preferred)
IPv6 Address. . . . . 2001:0:9d38:16ad:1456:392c:53ef:fe69(Preferred)
Link-local IPv6 Address . . . . . fe80::1456:392c:53ef:fe69%15(Preferred)
D:\maconomy\w_17_0.sysid14\MaconomyDir\Database>
```

- Keep this address and display handy;
- In the **Webserver URL (host and port)** field, delete the end of the default entry path, leaving only *http://*

Webserver URL (host and port) http://

- Type in the IP address. You must now add the port address to this line.
- In the same command line interface, type **netstat -an | find "200"** and hit **Enter**. A list of ports in use displays. The first available port is an unlisted number where there is a break in the sequence of the listed numbers.

Note: For your initial installation, use port **20000**.

In the following example, the sequence breaks after 20012, so you would enter the port number as 20013.

```
D:\maconomy\w_17_0.sysid14\MaconomyDir\Database>netstat -an | find "200"
TCP 0.0.0.0:20000 0.0.0.0:0 LISTENING
TCP 0.0.0.0:20001 0.0.0.0:0 LISTENING
TCP 0.0.0.0:20002 0.0.0.0:0 LISTENING
TCP 0.0.0.0:20003 0.0.0.0:0 LISTENING
TCP 0.0.0.0:20004 0.0.0.0:0 LISTENING
TCP 0.0.0.0:20005 0.0.0.0:0 LISTENING
TCP 0.0.0.0:20006 0.0.0.0:0 LISTENING
TCP 0.0.0.0:20007 0.0.0.0:0 LISTENING
TCP 0.0.0.0:20008 0.0.0.0:0 LISTENING
TCP 0.0.0.0:20009 0.0.0.0:0 LISTENING
TCP 0.0.0.0:20010 0.0.0.0:0 LISTENING
TCP 0.0.0.0:20011 0.0.0.0:0 LISTENING
TCP 0.0.0.0:20012 0.0.0.0:0 LISTENING
TCP 0.0.0.0:20021 0.0.0.0:0 LISTENING
TCP 0.0.0.0:20024 0.0.0.0:0 LISTENING
TCP 0.0.0.0:20027 0.0.0.0:0 LISTENING
```

- g) In the **Webserver URL (host and port)** field, enter a colon (:), the port number, and a forward slash (/).

• Ex: **http://172.16.1.150:20013/**

Webserver URL (host and port) **http://172.16.1.150:20013/**

In the end, the window will look something like this:

Web Server parameters for applicationname

Use Web server as template

Webserver home (root) directory

☐ Use Webserver home as base for other directories

Document (WWW root) directory

Physical cgi-bin directory

Virtual cgi-bin directory

Temporary directory

Update site directory

Portal source directory

Maconomy client type

Maconomy home directory

MScript source directory

Web Services source directory

Java Client directory

Java Client help directory

DPU (Java Client help framework)

Webserver URL (host and port)

Parameters were changed to values from web server Select a Web server home or specify one below

- h) Click **OK**.

The Web Products window is displayed.

10. In the Web Products window, do the following:

- a) Check that the **Web TPU** fields match the TPU specified in the request.
 - b) Select the following check boxes:
 - MScript
 - Web Services
 - c) (Re)install Application component files — Select Install unconditionally.
 - d) In the drop-down fields where **Install unconditionally** is an option, select **Install unconditionally**.
 - e) If languages are required, in the **Languages** field, choose the languages to install. Otherwise, skip this step.
 11. Click **OK**, then click **OK** on the Web Server Selection window, and click **OK** on the Application Instance Configuration window.
 12. The Main window displays. Click **Next**. The Installing (pending changes) window displays. Click **Next**.
 13. Once the installation completes, click **OK** to return to the Main window.
 14. In the Main window, click **Quit** to exit MConfig.
- To set up the web server for the web products, see relevant section [Set up Web Server](#).

Web Server Configuration

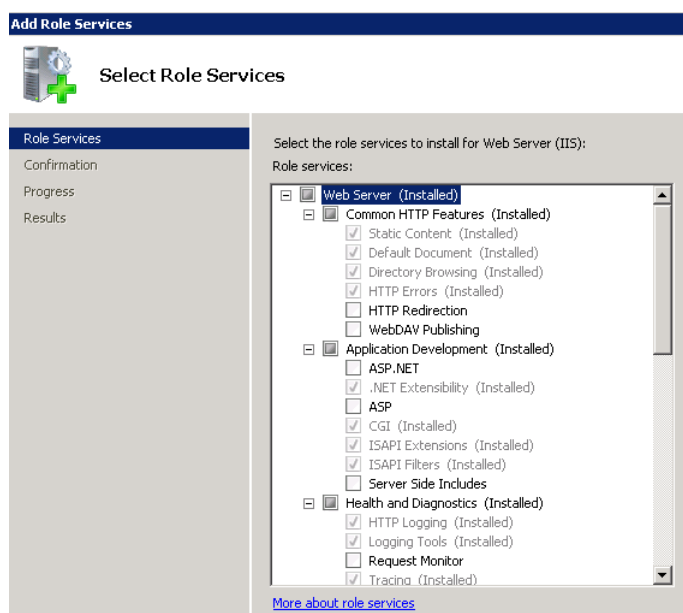
Setup Using IIS

1. Click **Programs » Administrative Tools » Internet Information Services (IIS)** to open IIS, or **Run » inetmgr**
2. Before anything, we need to make sure that IIS has all the services required by Maconomy installed. You will need to double-check that all of the following are installed:
 - a. Go to **Start » Administrative Tools » Server Manager**.
 - b. In the top left corner, under **Server Manager » Roles**, click **Web Server (IIS)**.
 - c. In that window, scroll down to the Role Services panel. Consult the following list and make sure that all the required services are installed.

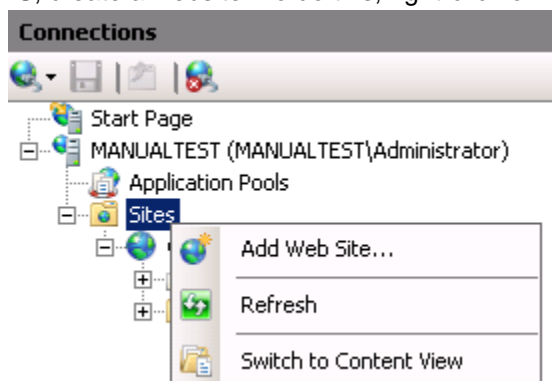
Role Services: 19 installed

Role Service	Status
Web Server	Installed
Common HTTP Features	Installed
Static Content	Installed
Default Document	Installed
Directory Browsing	Installed
HTTP Errors	Installed
HTTP Redirection	Not installed
WebDAV Publishing	Not installed
Application Development	Installed
ASP.NET	Not installed
.NET Extensibility	Installed
ASP	Not installed
CGI	Installed
ISAPI Extensions	Installed
ISAPI Filters	Installed
Server Side Includes	Not installed
Health and Diagnostics	Installed
HTTP Logging	Installed
Logging Tools	Installed
Request Monitor	Not installed
Tracing	Installed
Custom Logging	Not installed
ODBC Logging	Not installed
Security	Installed
Basic Authentication	Not installed
Windows Authentication	Not installed
Digest Authentication	Not installed
Client Certificate Mapping Authentication	Not installed
IIS Client Certificate Mapping Authentication	Not installed
URL Authorization	Not installed
Request Filtering	Installed
IP and Domain Restrictions	Not installed
Performance	Not installed
Static Content Compression	Not installed
Dynamic Content Compression	Not installed
Management Tools	Installed
IIS Management Console	Installed
IIS Management Scripts and Tools	Not installed
Management Service	Not installed
IIS 6 Management Compatibility	Not installed
IIS 6 Metabase Compatibility	Not installed
IIS 6 WMI Compatibility	Not installed
IIS 6 Scripting Tools	Not installed
IIS 6 Management Console	Not installed
FTP Server	Not installed
FTP Service	Not installed
FTP Extensibility	Not installed
IIS Hostable Web Core	Not installed

- d. If some of them are not installed, do the following:
- Right-click on **Web Server (IIS)** under Roles and select **Add Role Services**.
 - Select the items that are you missing.



- iii. Click **Next** and the roles should now start installing. When installation is done, continue.
3. In IIS, create a website. To do this, right-click on **Sites** and click **Add Website**.

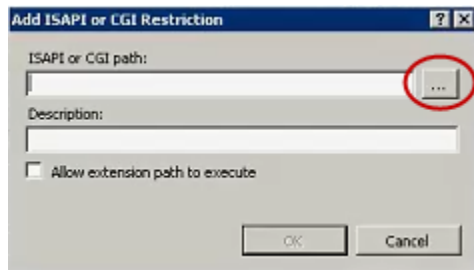


4. Complete the following fields in the Add Website window, then click **OK**.
 - **Site name** — Enter the name of the application instance name used in MConfig. You can enter this by going into the Maconomy folder and copying the name then pasting in this field.
 - **Physical Path** — Browse to the path of the webserver is installed, then select the wwwroot folder within this directory **Maconomy » WebServers » [application name] » wwwroot**.
 - **Port** — Enter the port used in the webserver URL. (from step **9g** under Web products setup)

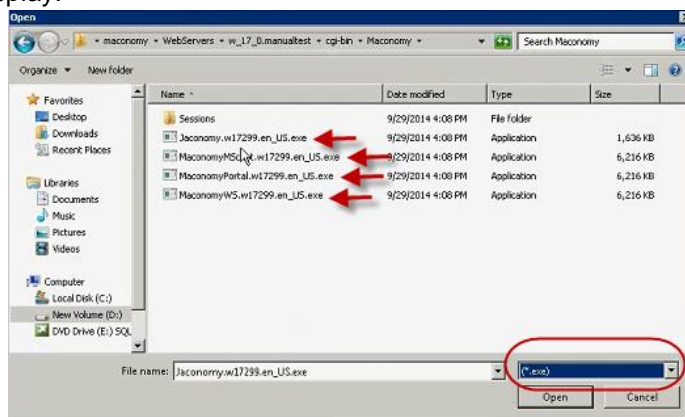
The website is created, and now must be configured.

5. Add a new application to the website. To do this, right click on the website created and click **Add Application**.
6. In the Add Application window, complete the following fields, then click **OK**.

- **Alias** — Enter **cgi-bin**.
 - **Application pool** — Click **Select**, then from the drop-down list, select **DefaultAppPool**.
 - **Physical Path** — Browse to and select the **cgi-bin** folder, at **Maconomy » WebServers » [web products folder] » cgi-bin**.
7. Click on the website you have just created, and then double-click **Handler Mappings**.
 8. In the Handler Mappings window, on the panel on the right side, click **Edit Feature Permissions**.
 9. In the Edit Feature Permissions window, select the **Execute** check box and click **OK**.
 10. Click on the local server (computer name) in IIS, and then double-click **ISAPI and CGI Restrictions**.
 11. The ISAPI and CGI Restrictions page displays. Right-click, then click **Add**.
 12. The Add ISAPI and CGI Restrictions window displays. Complete the following fields and click **OK**.
 - a. **ISAPI or CGI path** — Click the ... button to open the browse window.



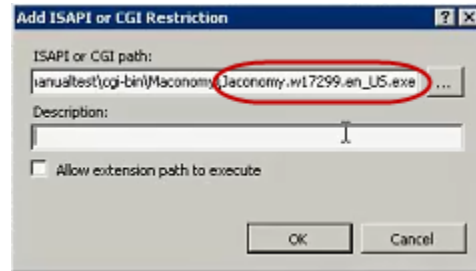
Select the path to where the web products executables are stored. Click **Maconomy » WebServers » [web products folder] » cgi-bin » Maconomy**. Select to only view .exe files from the drop-down menu in the lower-right corner. The available applications display.



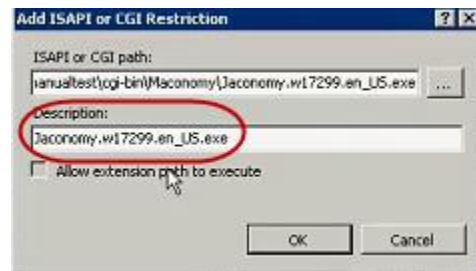
Select the first and click **Open**.

- b. **Description** — Enter the Application name. Copy *after* the last backward slash [\] from the path field in step a, and paste in the Description field.

Copy



Paste



- c. **Allow extension path to execute** — Select this check box.
- d. Complete steps a - c for all executable files in the **cgi-bin** folder. Note that you may have more executables if you have installed multiple languages.
- e. Click on the site and ensure that it is running. Select **Sites » [sitename]**, then click Restart. To test the clients see the “Testing the web products” section at the end.

Setup Using Apache

1. Open the Apache configuration file. Click **Program Files » Apache Software Foundation » Apache [version] » conf » httpd.conf**.
2. Right-click, then click **Edit with Notepad++** (or whatever text editor you are using).
3. A file opens. At the end of the file, enter a configuration block as follows:

```
Listen 20001
<VirtualHost *:20001>
    DocumentRoot "C:\Maconomy\WebServers\w_20_0.test\htdocs"
    <Directory />
        AllowOverride None
        Options None
        Order allow,deny
        Allow from all
    </Directory>
    ScriptAlias /cgi-bin/ "C:\Maconomy\WebServers\w_20_0.test/cgi-bin/"
    <Directory />
```

```
        AllowOverride None
        Options None
        Order allow,deny
        Allow from all
    </Directory>
</VirtualHost>
```

Where **20001** in fields Listen and VirtualHost is the port number (from step **9g** under “**Web products setup**”) and **C:\Maconomy\WebServers\w_20_0.test** in the DocumentRoot (**/htdocs**) and ScriptAlias (**/cgi-bin/**) fields is the web products path. If needed, browse to the web products folder and copy the full address in the address bar, then paste it into the configuration block. Again, if you’re not sure, please refer back to the notes on folder hierarchy at the beginning of this manual.

4. Click **Save** to save the changes you have made to the **httpd.conf** file.
5. Open the Services control panel.
6. Restart the Apache service.

Testing the Web Products

1. Open **Maconomy » index.html** and scroll to the newly created application.
2. Click the link corresponding to **Maconomy**. Ensure that it is running properly. Enter Username and Password as prompted.

Analyzer Reports

For new installations, Deltek recommends that you enable access to the Web Analyzer from the Workspace Client. The legacy Java Analyzer will be decommissioned in the next major Maconomy version (2.7).

For setup instructions, refer to the *Deltek Maconomy Web Client Install Guide*.

Glossary

- **APU** – Application Packing Unit
- **BPM** – Business Performance Management
- **Coupling Service** – Service that allows client to connect using the Workspace Client interface. Also serves the REST API.
- **CPA** – Certified Public Accountant solution
- **MCS** – Maconomy Consulting solution
- **MConfig** – Software you use to install and configure the Maconomy system
- **PSO** – Professional Service Organizations solution
- **Shortname** – The name of the database instance where the Maconomy system will store its data (not the name of the database software itself, such as Oracle or SQL Server)
- **SPU** – Solution Packing Unit
- **TPU** – Technology Packing Unit
- **Web Products** – A suite of services that provide a web-based interface to the Maconomy system



About Deltek

Better software means better projects. Deltek is the leading global provider of enterprise software and information solutions for project-based businesses. More than 23,000 organizations and millions of users in over 80 countries around the world rely on Deltek for superior levels of project intelligence, management and collaboration. Our industry-focused expertise powers project success by helping firms achieve performance that maximizes productivity and revenue. www.deltek.com